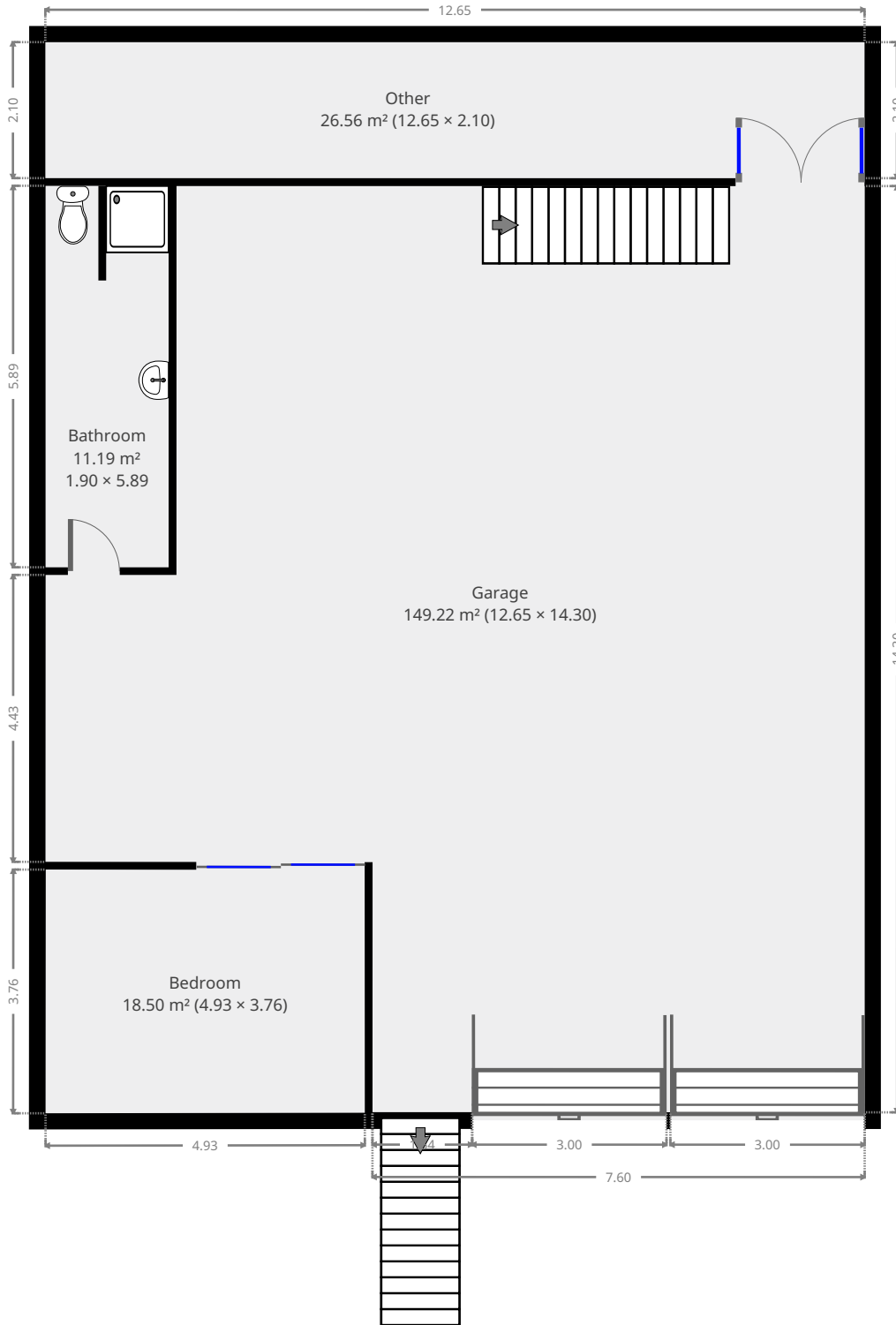
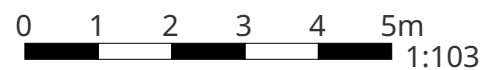


35 Hardacre Street

Ground Floor



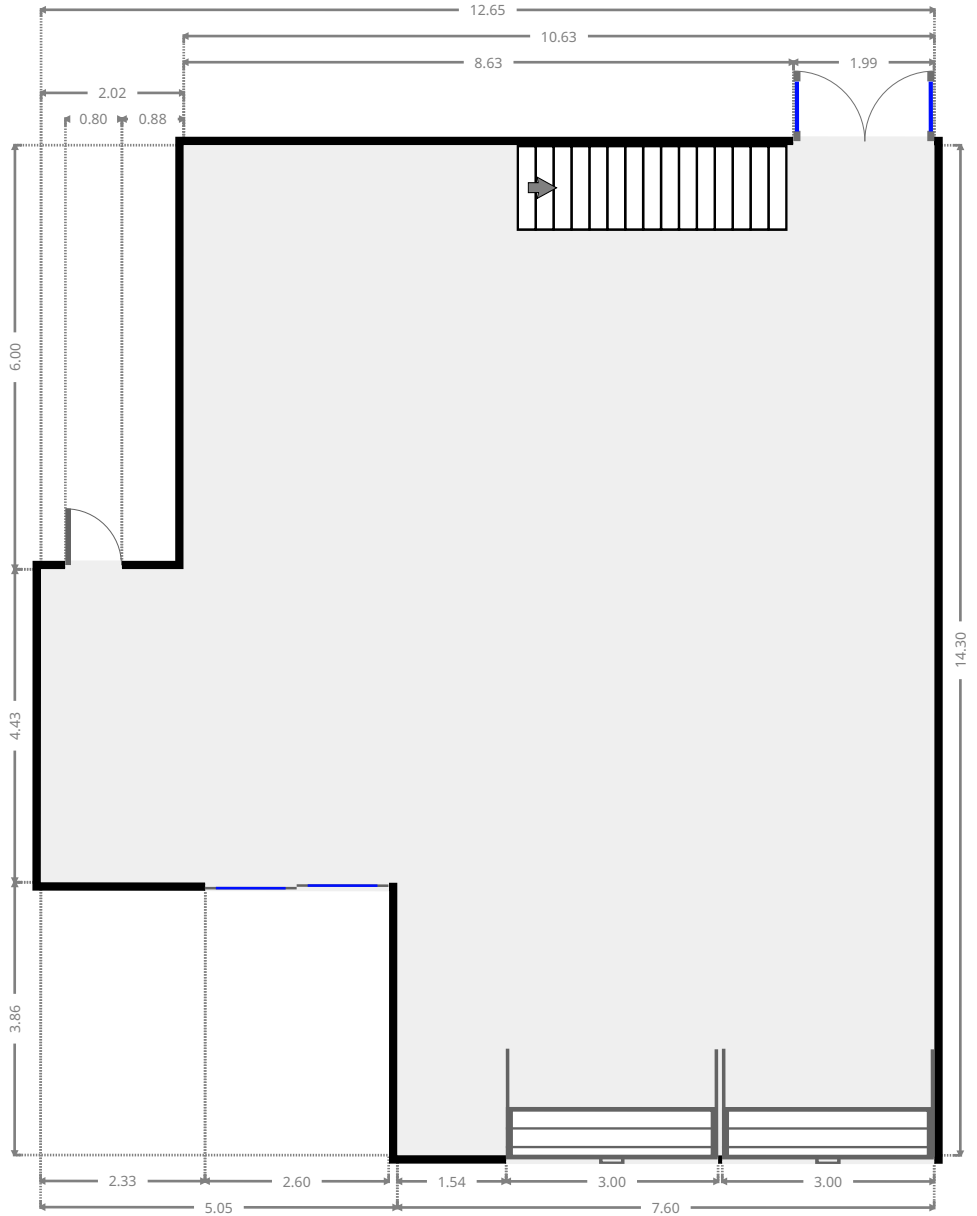
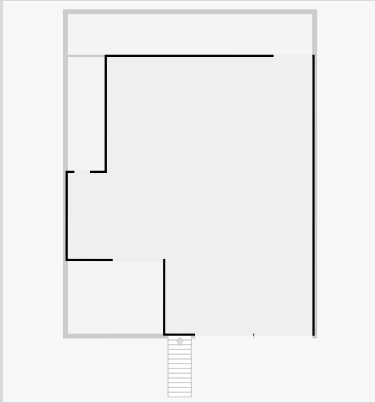
THIS FLOORPLAN IS PROVIDED WITHOUT WARRANTY OF ANY KIND. SENSOPIA DISCLAIMS ANY WARRANTY INCLUDING, WITHOUT LIMITATION, SATISFACTORY QUALITY OR ACCURACY OF DIMENSIONS.



35 Hardacre Street

Garage

Width: 12.65 m
Length: 14.30 m
Area: 149.22 m²
Perimeter: 53.89 m



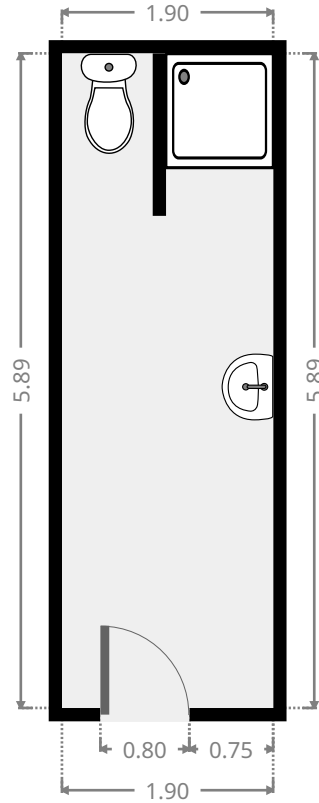
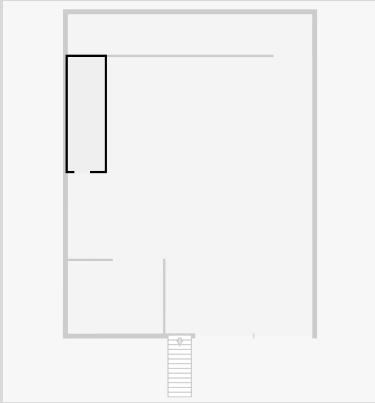
THIS FLOORPLAN IS PROVIDED WITHOUT WARRANTY OF ANY KIND. SENSOPIA DISCLAIMS ANY WARRANTY INCLUDING, WITHOUT LIMITATION, SATISFACTORY QUALITY OR ACCURACY OF DIMENSIONS.



35 Hardacre Street

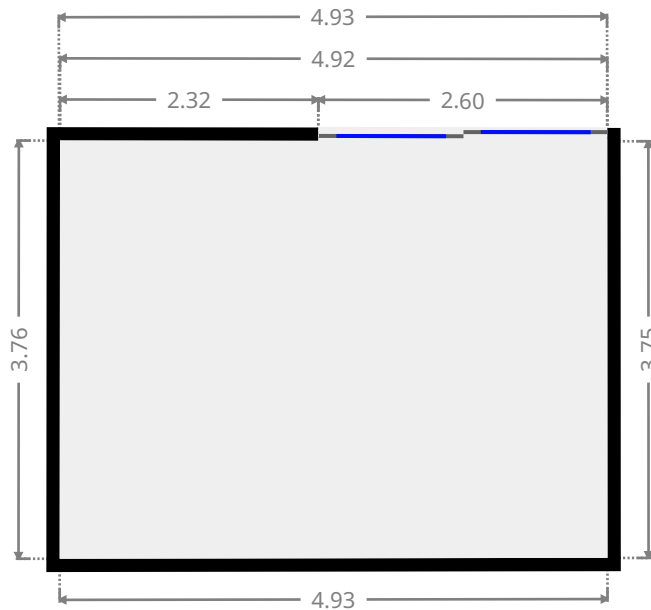
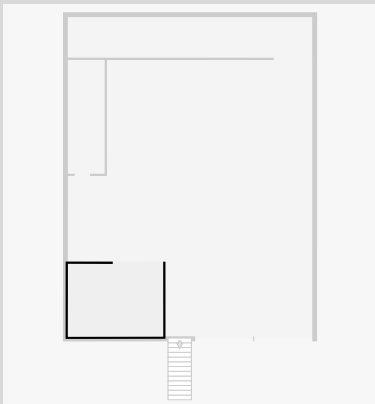
Bathroom

Width: 1.90 m
Length: 5.89 m
Area: 11.19 m²
Perimeter: 15.58 m



Bedroom

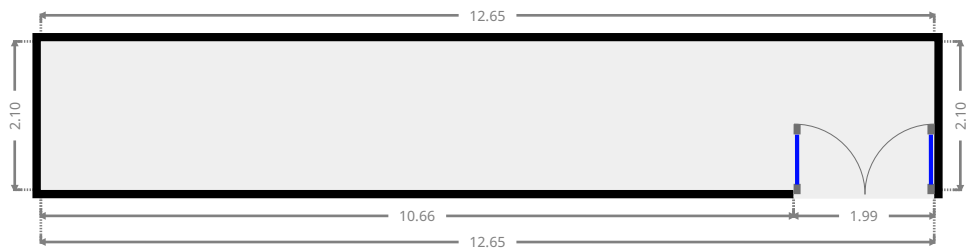
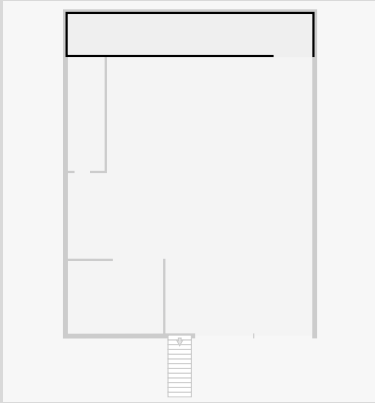
Width: 3.76 m
Length: 4.93 m
Area: 18.50 m²
Perimeter: 17.36 m



35 Hardacre Street

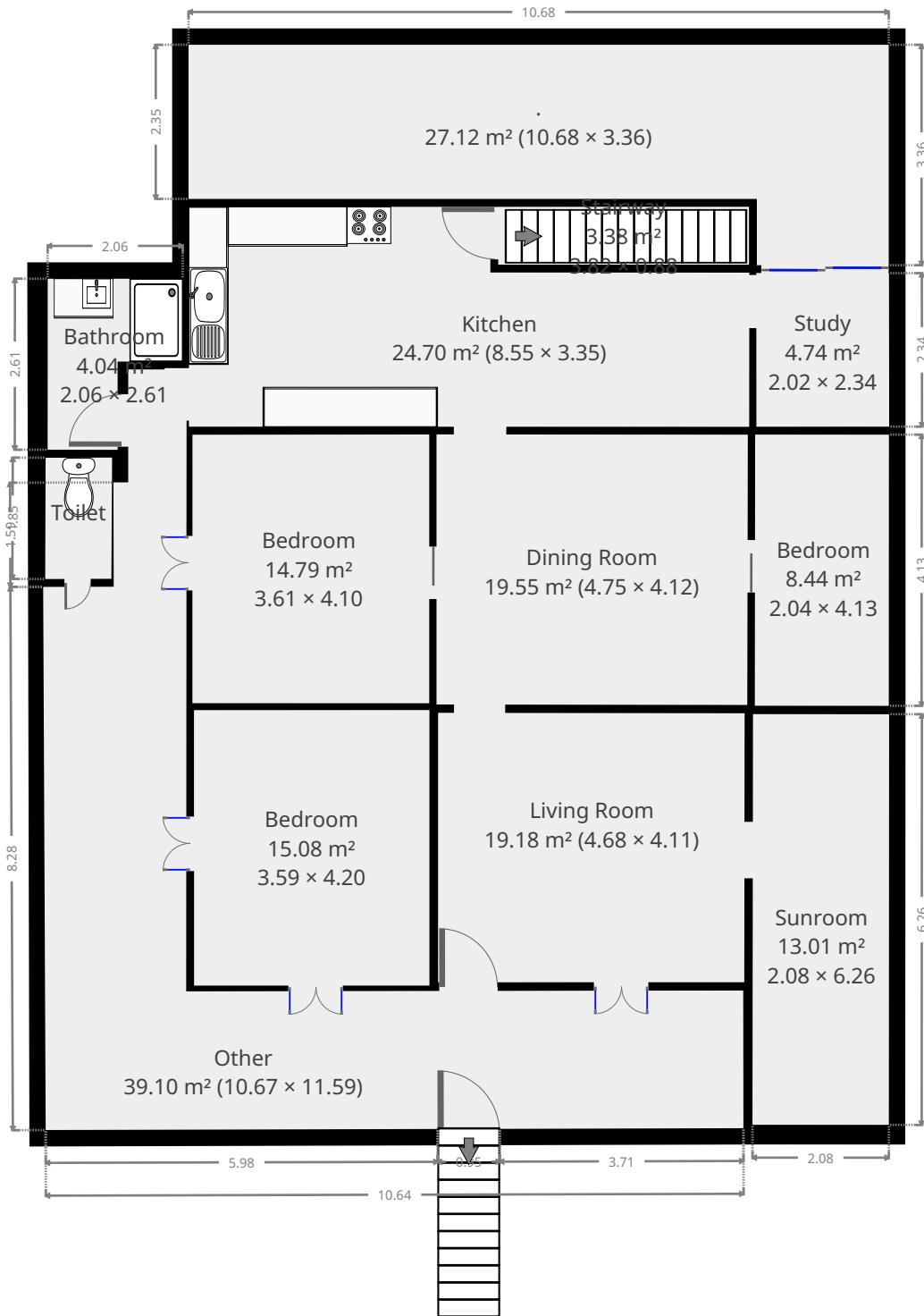
Other

Width:	2.10 m
Length:	12.65 m
Area	26.56 m ²
Perimeter	29.50 m



35 Hardacre Street

1st Floor



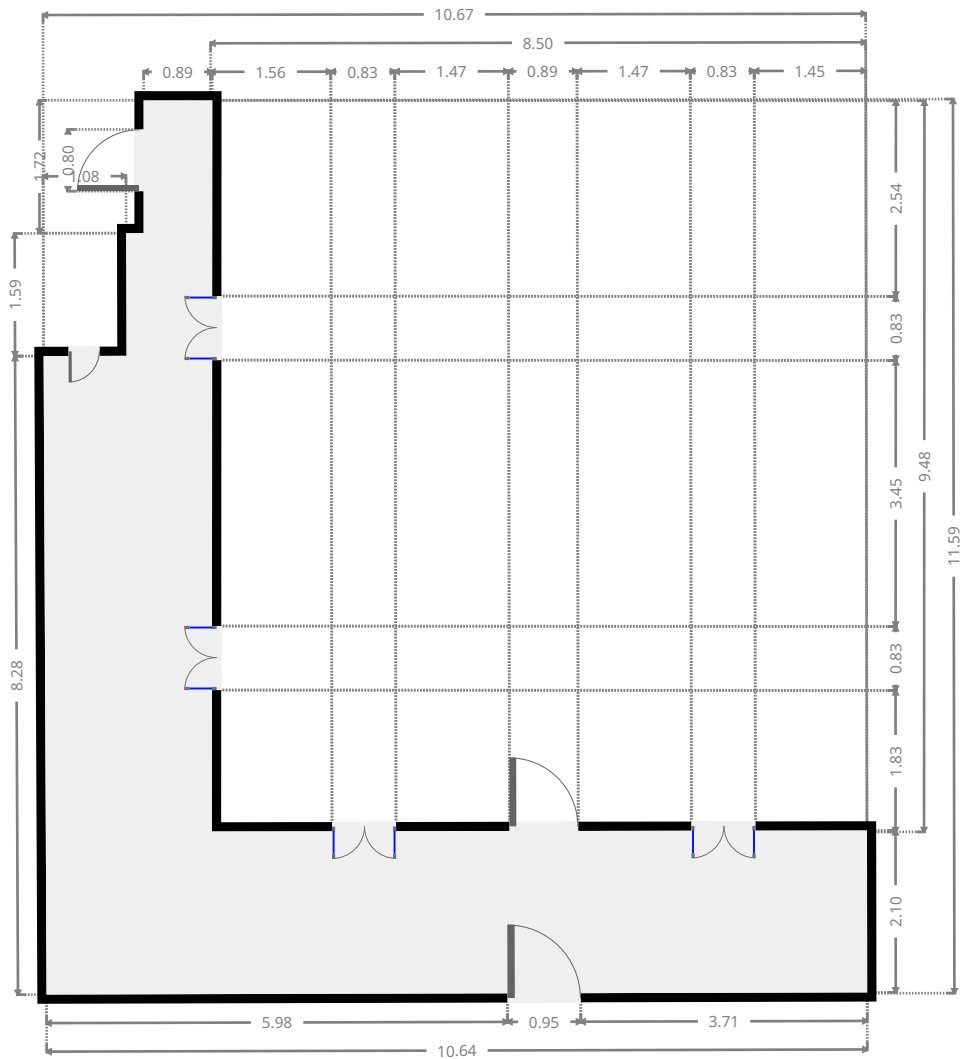
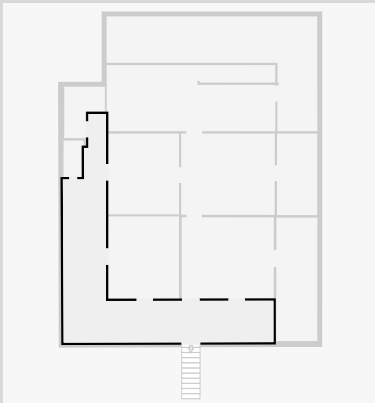
THIS FLOORPLAN IS PROVIDED WITHOUT WARRANTY OF ANY KIND. SENSOPIA DISCLAIMS ANY WARRANTY INCLUDING, WITHOUT LIMITATION, SATISFACTORY QUALITY OR ACCURACY OF DIMENSIONS.



35 Hardacre Street

Other

Width: 10.67 m
 Length: 11.59 m
 Area: 39.10 m²
 Perimeter: 44.50 m

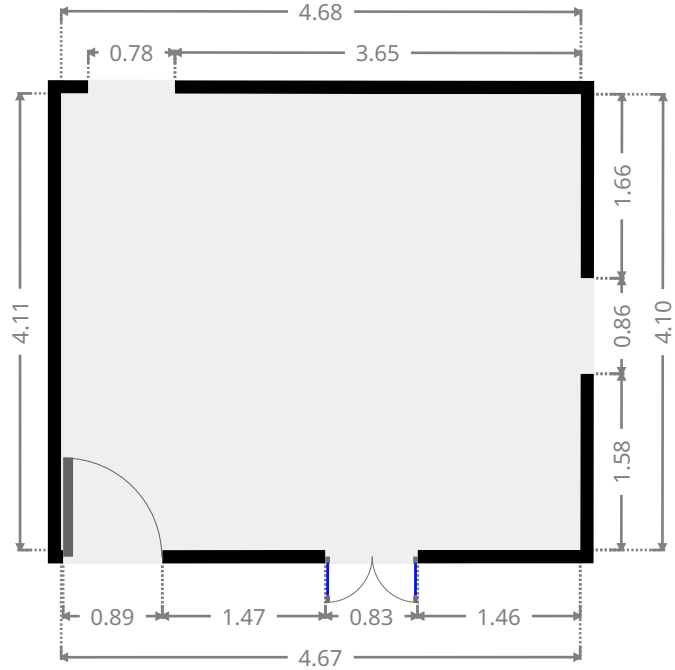
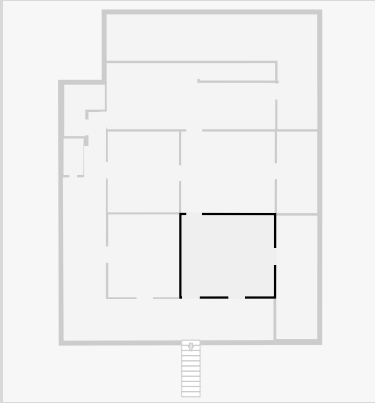


THIS FLOORPLAN IS PROVIDED WITHOUT WARRANTY OF ANY KIND. SENSOPIA DISCLAIMS ANY WARRANTY INCLUDING, WITHOUT LIMITATION, SATISFACTORY QUALITY OR ACCURACY OF DIMENSIONS.

35 Hardacre Street

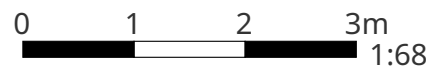
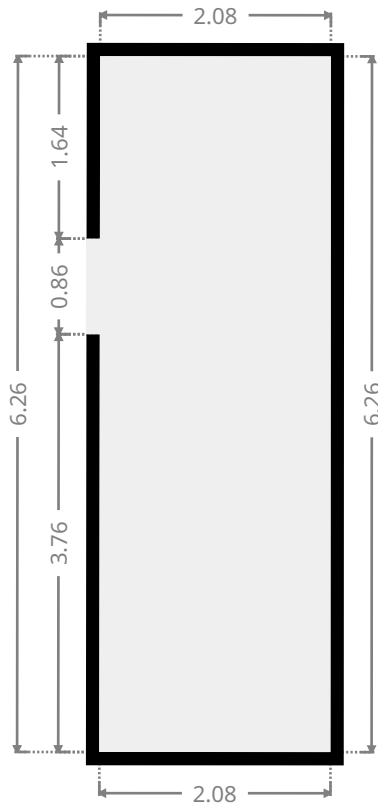
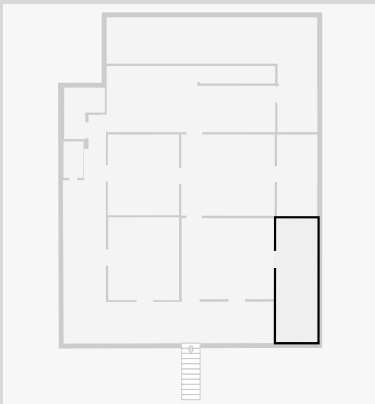
Living Room

Width: 4.11 m
Length: 4.68 m
Area: 19.18 m²
Perimeter: 17.56 m



Sunroom

Width: 2.08 m
Length: 6.26 m
Area: 13.01 m²
Perimeter: 16.68 m

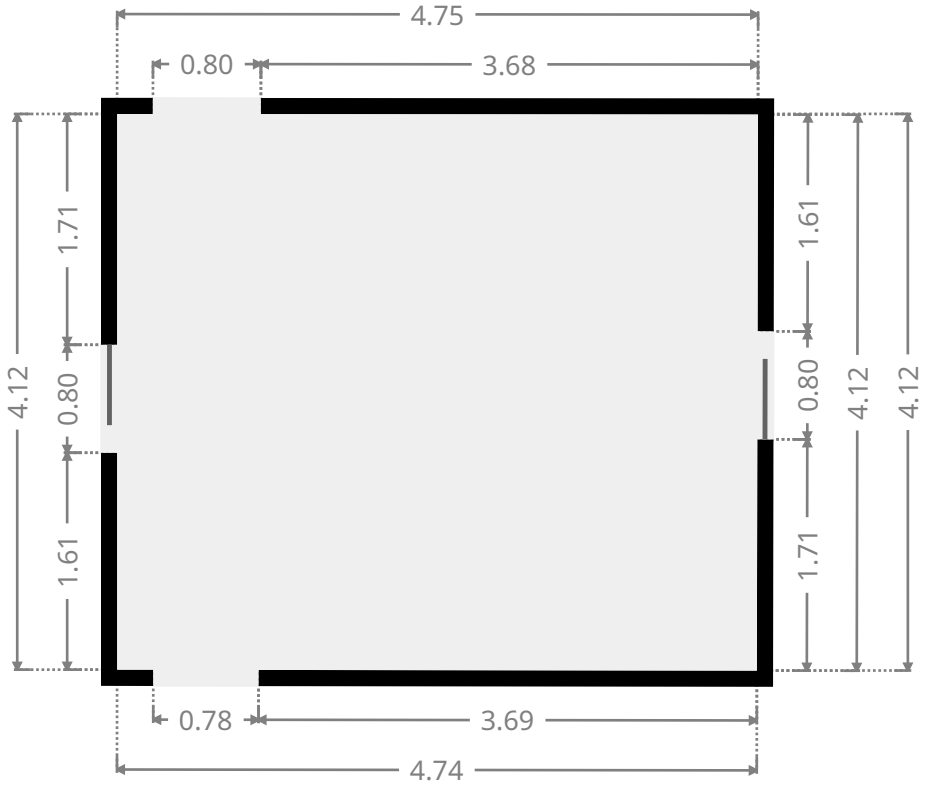
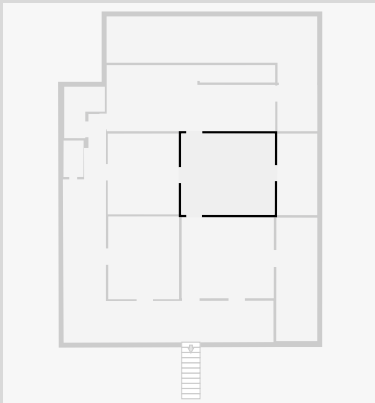


THIS FLOORPLAN IS PROVIDED WITHOUT WARRANTY OF ANY KIND. SENSOPIA DISCLAIMS ANY WARRANTY INCLUDING, WITHOUT LIMITATION, SATISFACTORY QUALITY OR ACCURACY OF DIMENSIONS.

35 Hardacre Street

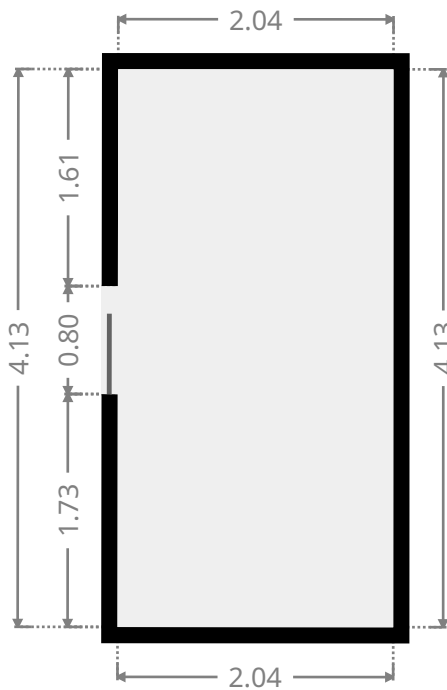
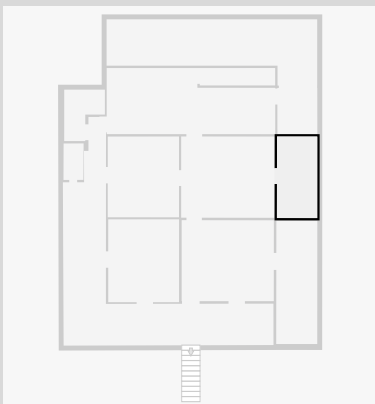
Dining Room

Width: 4.12 m
 Length: 4.75 m
 Area: 19.55 m²
 Perimeter: 17.73 m

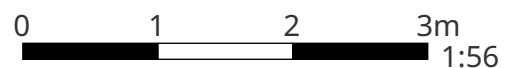


Bedroom

Width: 2.04 m
 Length: 4.13 m
 Area: 8.44 m²
 Perimeter: 12.35 m



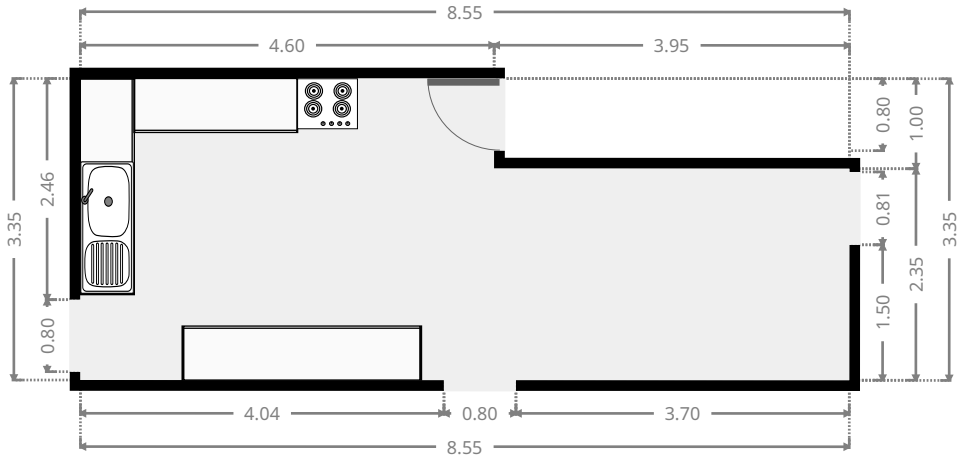
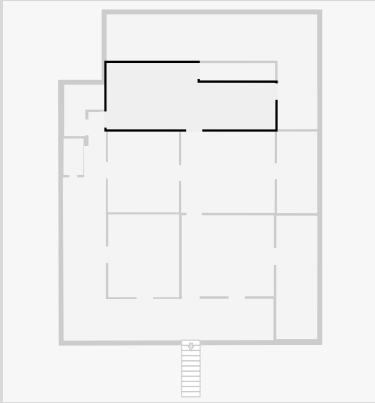
THIS FLOORPLAN IS PROVIDED WITHOUT WARRANTY OF ANY KIND. SENSOPIA DISCLAIMS ANY WARRANTY INCLUDING, WITHOUT LIMITATION, SATISFACTORY QUALITY OR ACCURACY OF DIMENSIONS.



35 Hardacre Street

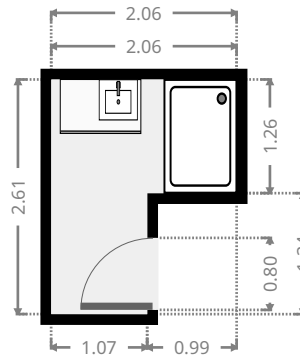
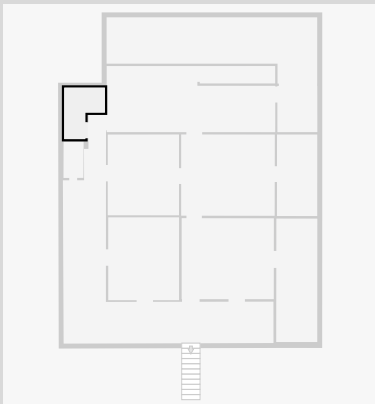
Kitchen

Width: 3.35 m
Length: 8.55 m
Area: 24.70 m²
Perimeter: 23.80 m



Bathroom

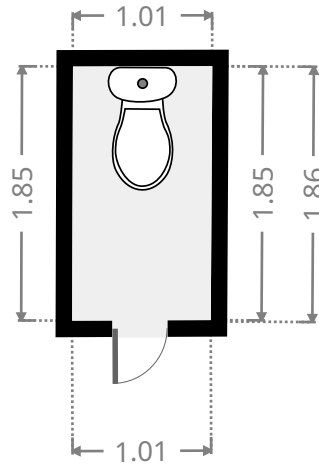
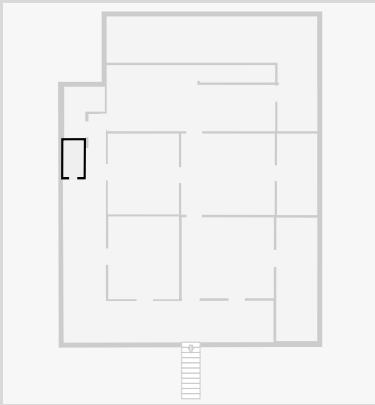
Width: 2.06 m
Length: 2.61 m
Area: 4.04 m²
Perimeter: 9.34 m



35 Hardacre Street

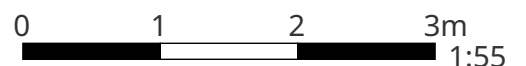
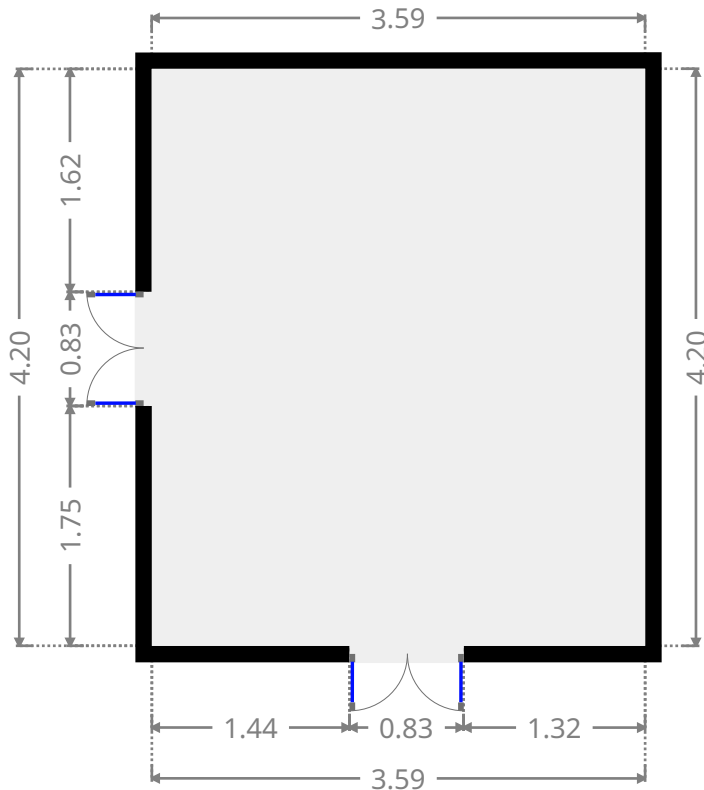
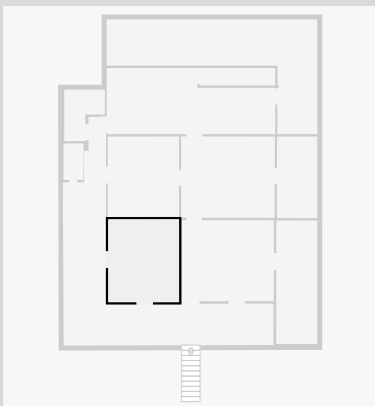
Toilet / Half Bath

Width: 1.01 m
Length: 1.86 m
Area: 1.87 m²
Perimeter: 5.72 m



Bedroom

Width: 3.59 m
Length: 4.20 m
Area: 15.08 m²
Perimeter: 15.58 m

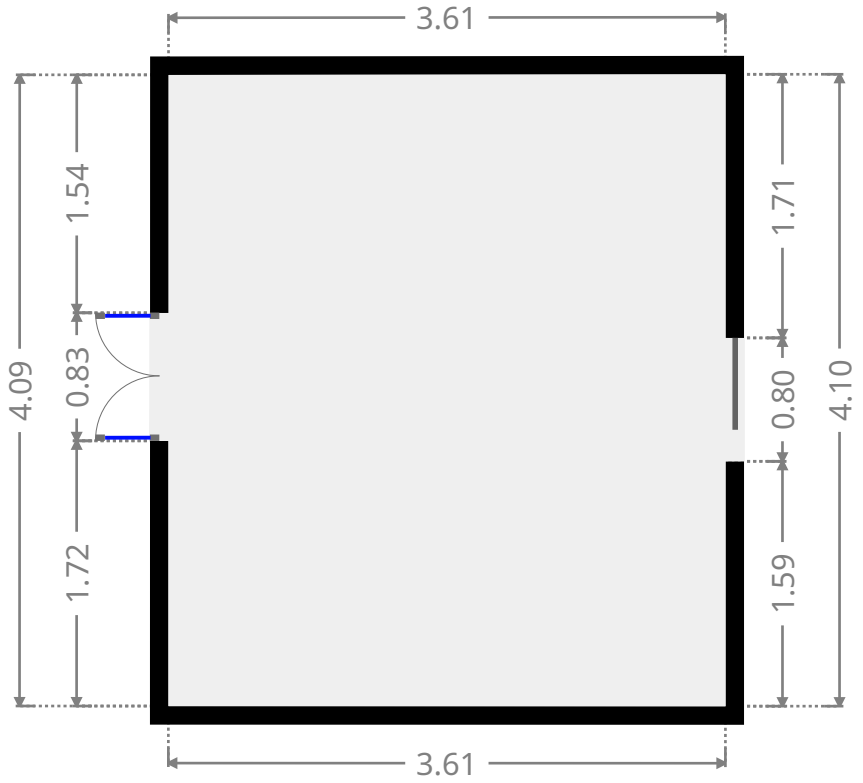
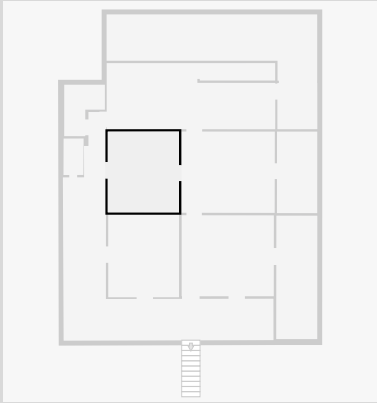


THIS FLOORPLAN IS PROVIDED WITHOUT WARRANTY OF ANY KIND. SENSOPIA DISCLAIMS ANY WARRANTY INCLUDING, WITHOUT LIMITATION, SATISFACTORY QUALITY OR ACCURACY OF DIMENSIONS.

35 Hardacre Street

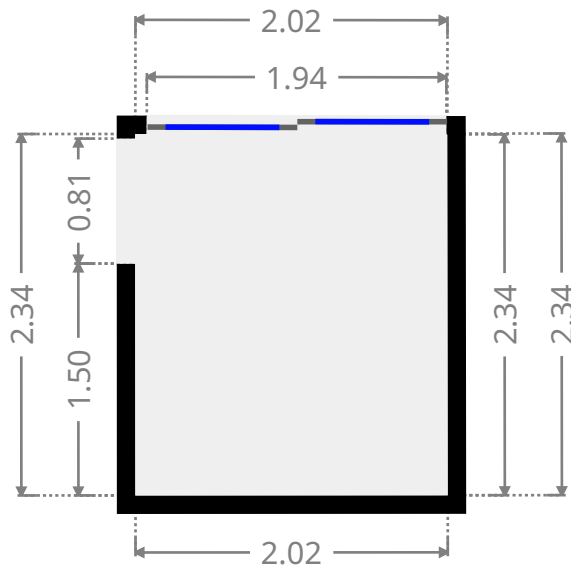
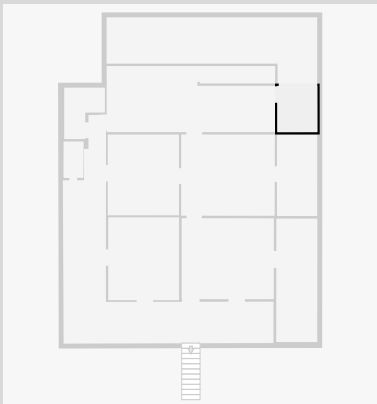
Bedroom

Width: 3.61 m
 Length: 4.10 m
 Area: 14.79 m²
 Perimeter: 15.41 m



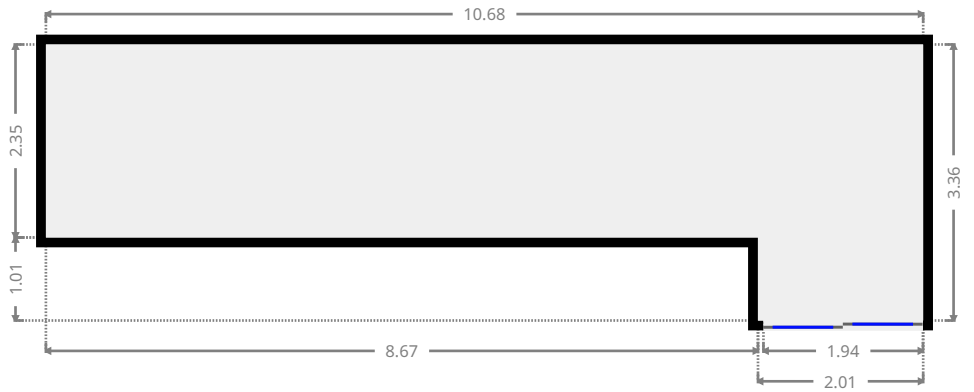
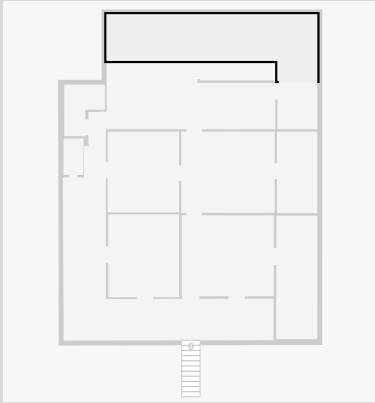
Study

Width: 2.02 m
 Length: 2.34 m
 Area: 4.74 m²
 Perimeter: 8.73 m



35 Hardacre Street

•
Width: 3.36 m
Length: 10.68 m
Area: 27.12 m²
Perimeter: 28.08 m



THIS FLOORPLAN IS PROVIDED WITHOUT WARRANTY OF ANY KIND. SENSOPIA DISCLAIMS ANY WARRANTY INCLUDING, WITHOUT LIMITATION, SATISFACTORY QUALITY OR ACCURACY OF DIMENSIONS.



35 Hardacre Street

Stairway

Width:	0.88 m
Length:	3.82 m
Area	3.38 m ²
Perimeter	9.41 m

