

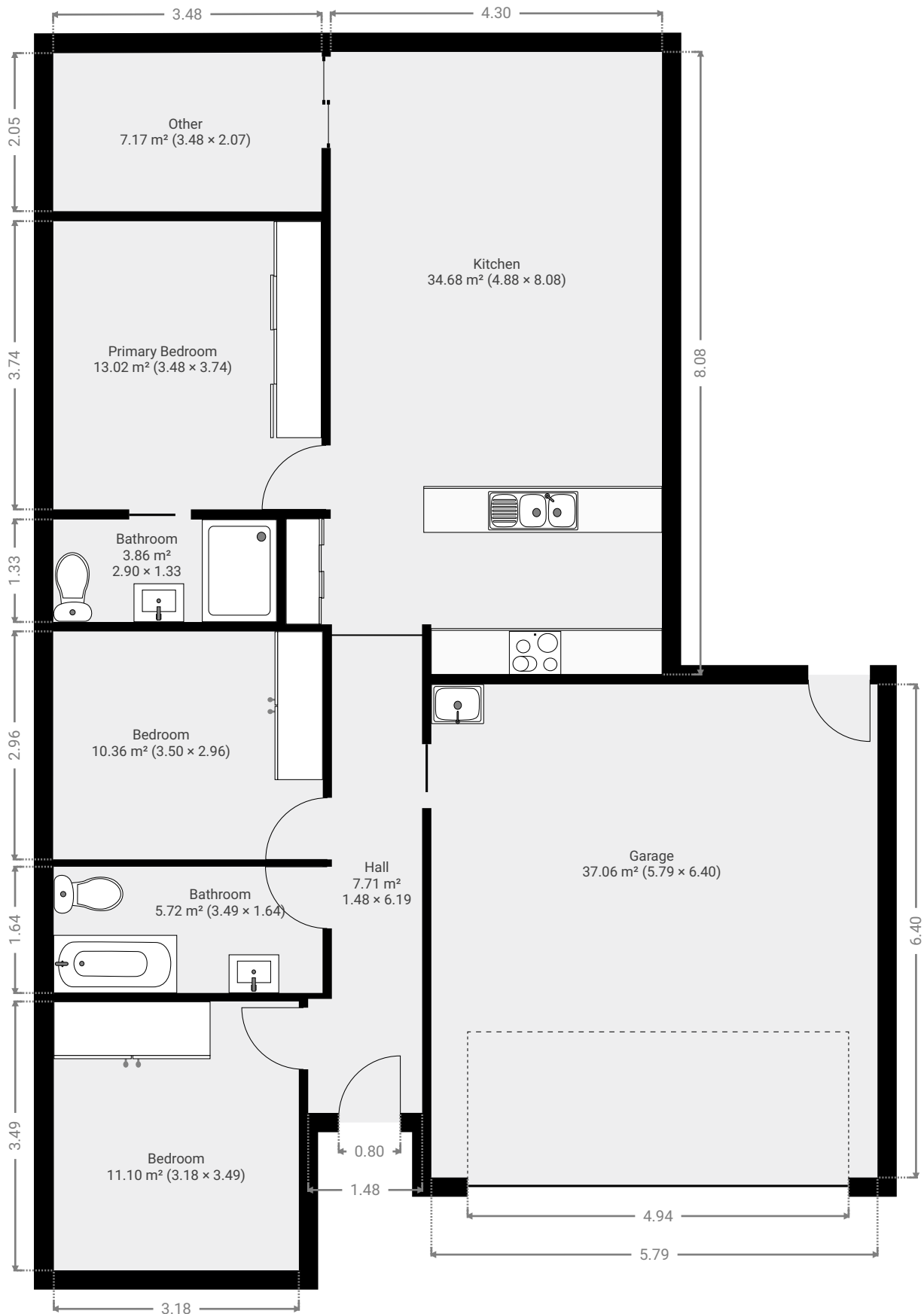
35 Brodie Drive, Gracemere

Ray White Rockhampton

TOTAL AREA: 130.60 m² • LIVING AREA: 93.55 m² • FLOORS: 1 • ROOMS: 4

▼ Ground Floor

TOTAL AREA: 130.60 m² • LIVING AREA: 93.55 m² • ROOMS: 4



THIS FLOORPLAN IS PROVIDED WITHOUT WARRANTY OF ANY KIND. SENSOPIA DISCLAIMS ANY WARRANTY INCLUDING, WITHOUT LIMITATION, SATISFACTORY QUALITY OR ACCURACY OF DIMENSIONS.

0 1 2 3m

1:74