

348 Irving Avenue

SUBMITTED BY

Ray White Rockhampton Casey
stockers@cqoz.com

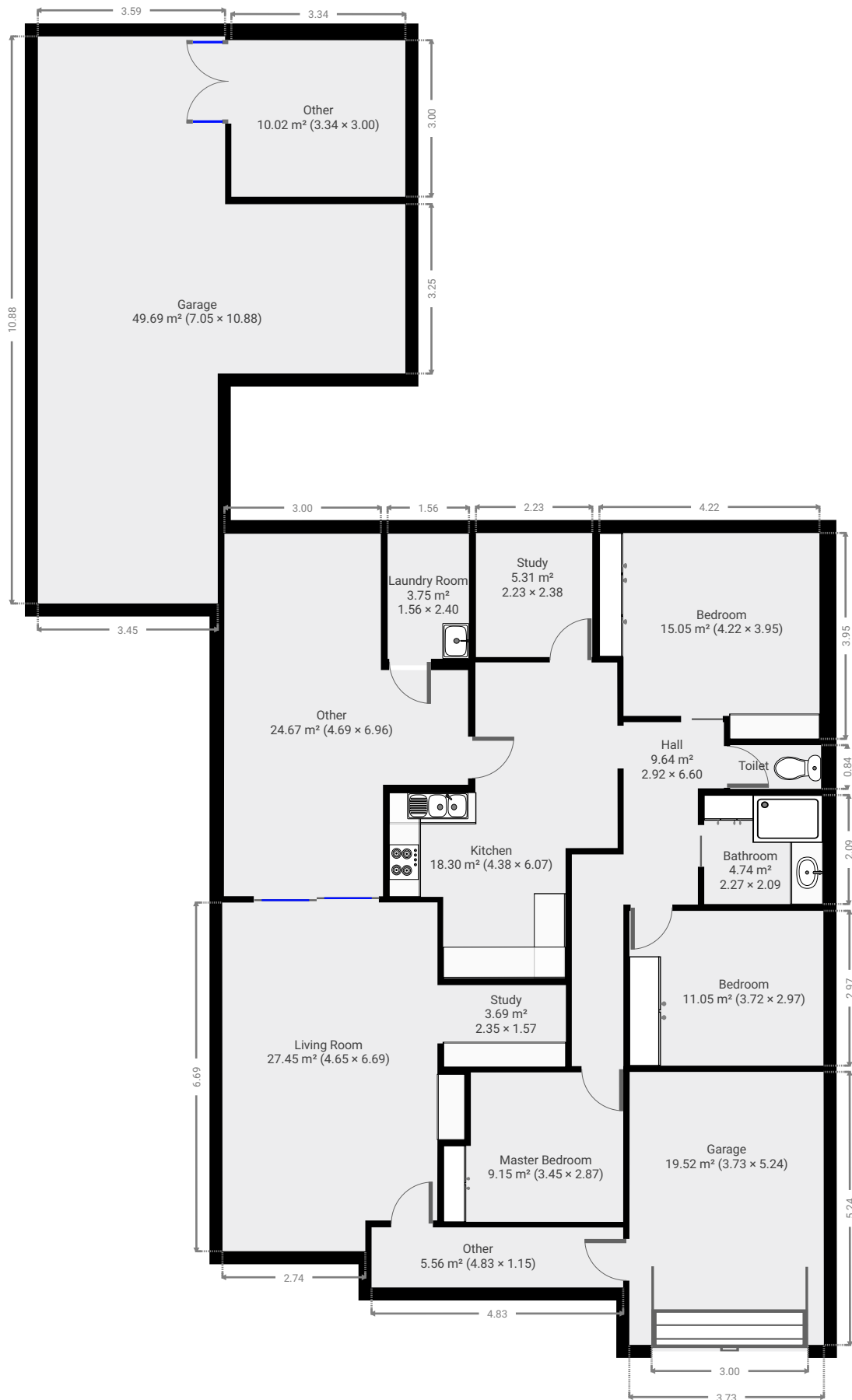
CREATED ON

2021-12-02

Floors

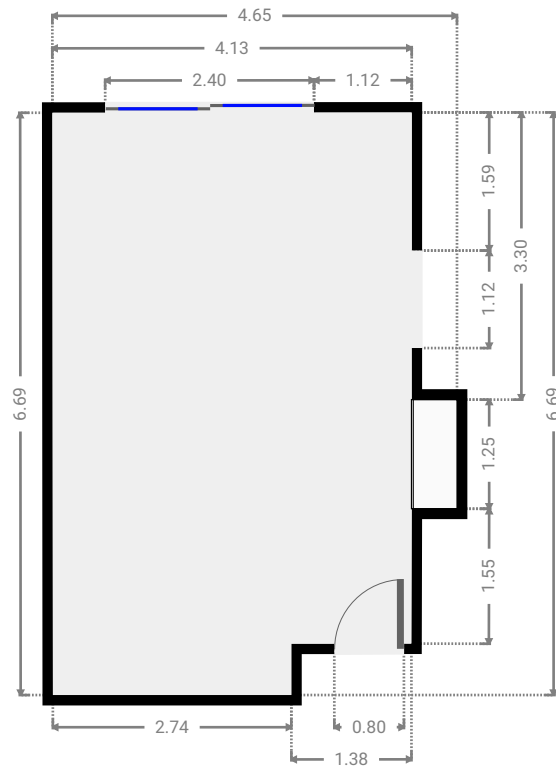
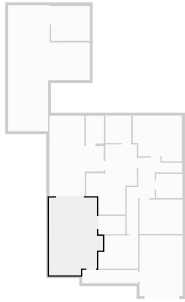
1

▼ Ground Floor



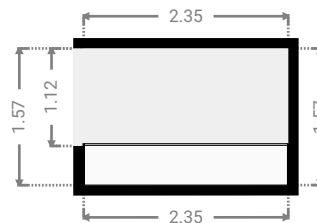
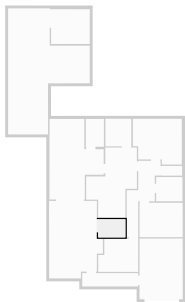
▼ **Living Room**
Ground Floor

WIDTH: 4.65 m • LENGTH: 6.69 m
AREA: 27.45 m² • PERIMETER: 22.67 m



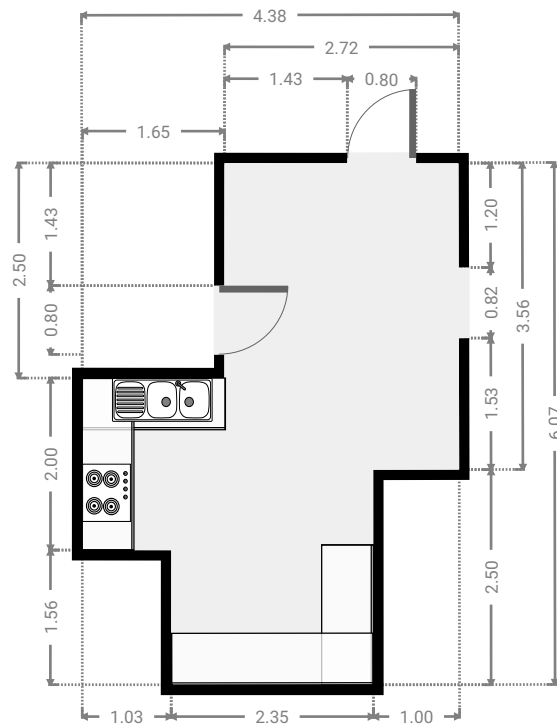
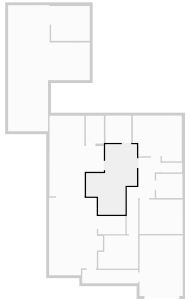
▼ **Study**
Ground Floor

WIDTH: 2.35 m • LENGTH: 1.57 m
AREA: 3.69 m² • PERIMETER: 7.84 m



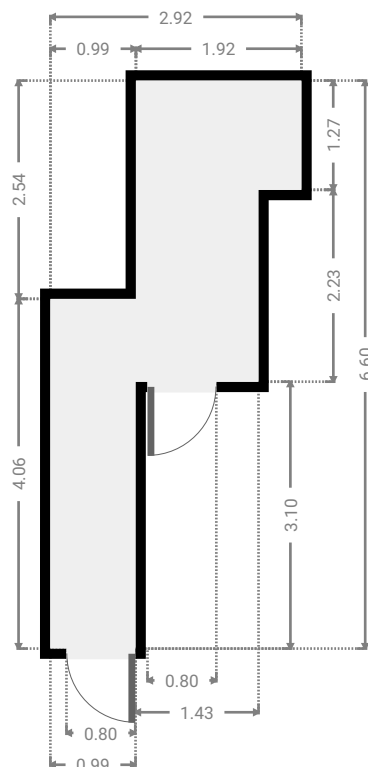
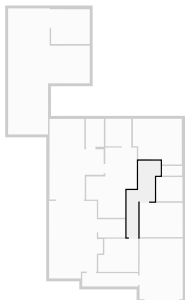
▼ **Kitchen**
Ground Floor

WIDTH: 4.38 m • LENGTH: 6.07 m
AREA: 18.30 m² • PERIMETER: 20.88 m



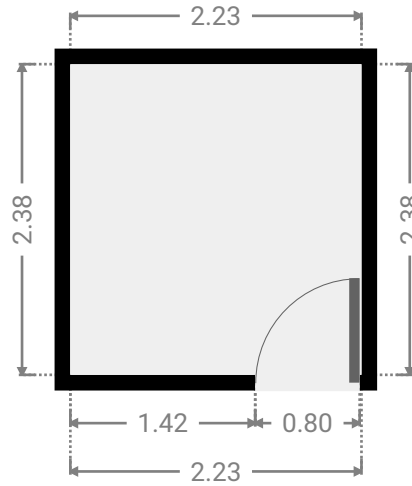
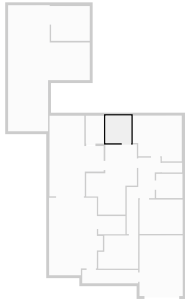
▼ **Hall**
Ground Floor

WIDTH: 2.92 m • LENGTH: 6.60 m
AREA: 9.64 m² • PERIMETER: 19.04 m



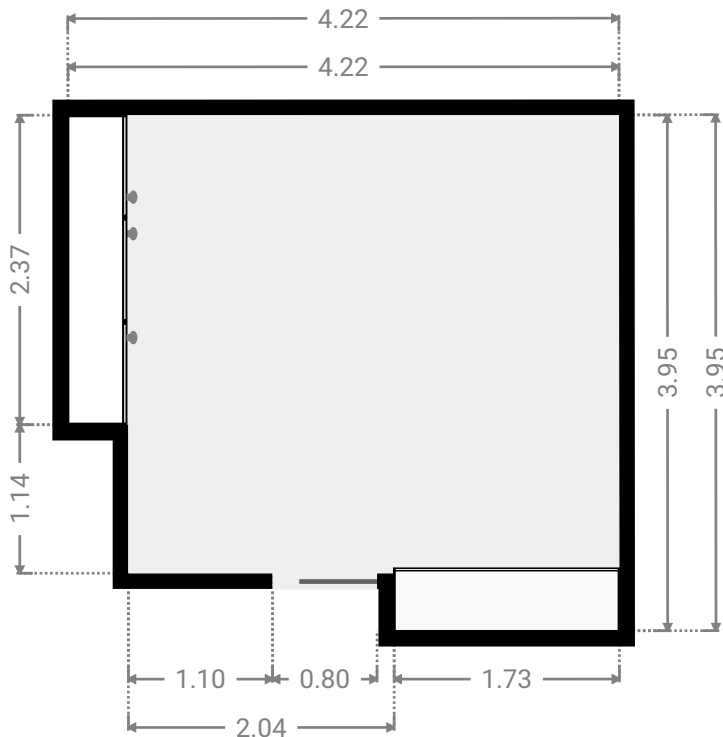
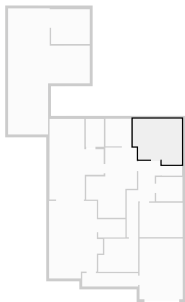
▼ **Study**
Ground Floor

WIDTH: 2.23 m • LENGTH: 2.38 m
AREA: 5.31 m² • PERIMETER: 9.22 m



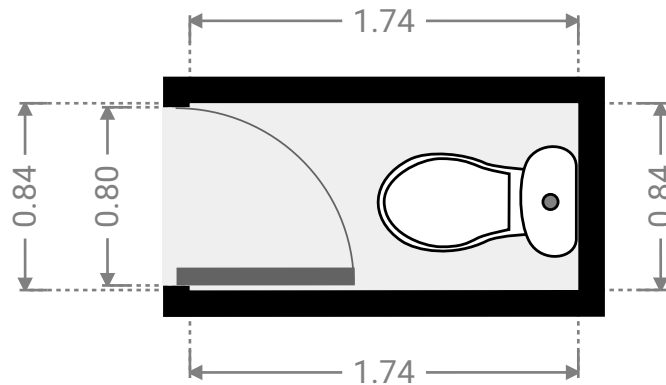
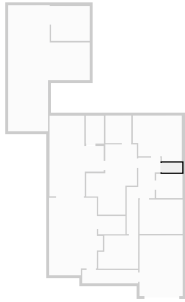
▼ **Bedroom**
Ground Floor

WIDTH: 4.22 m • LENGTH: 3.95 m
AREA: 15.05 m² • PERIMETER: 16.34 m



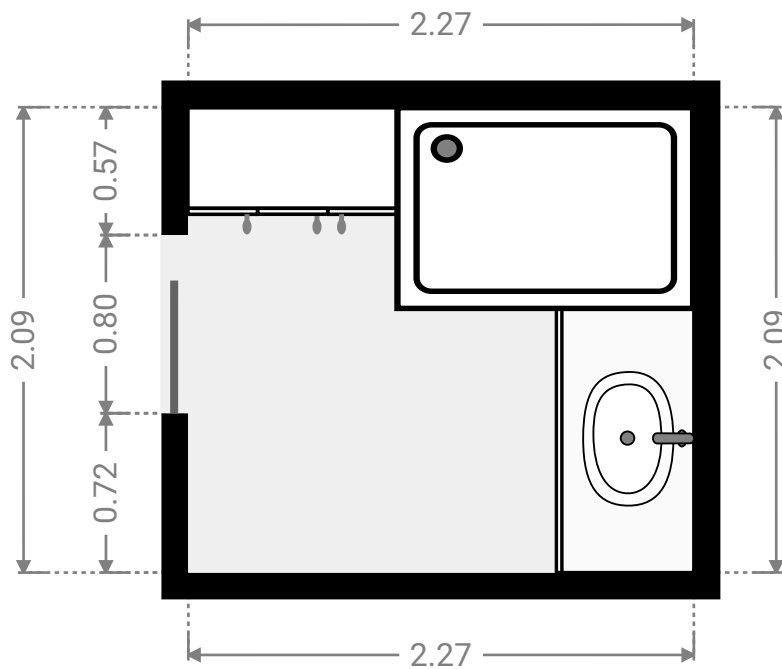
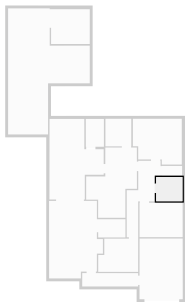
▼ **Toilet**
Ground Floor

WIDTH: 1.74 m • LENGTH: 0.84 m
AREA: 1.46 m² • PERIMETER: 5.17 m



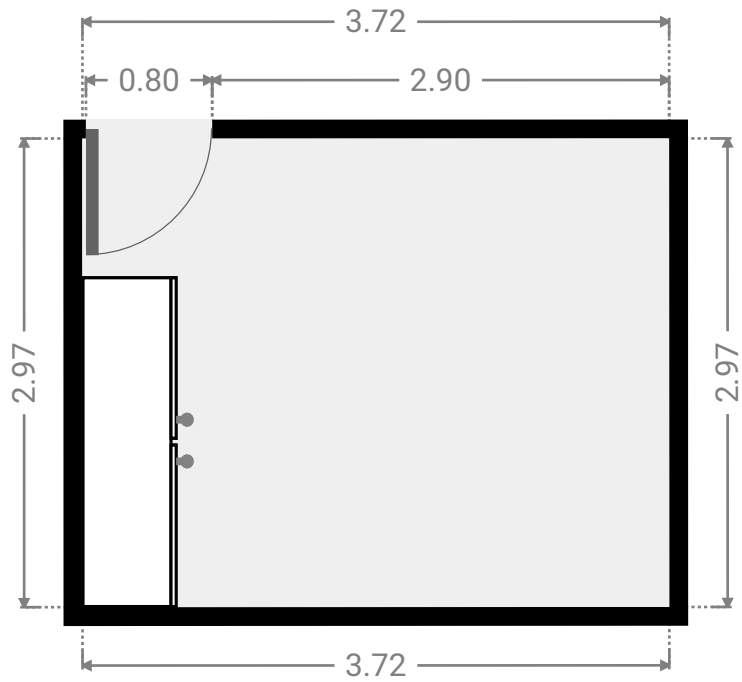
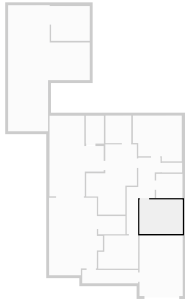
▼ **Bathroom**
Ground Floor

WIDTH: 2.27 m • LENGTH: 2.09 m
AREA: 4.74 m² • PERIMETER: 8.72 m



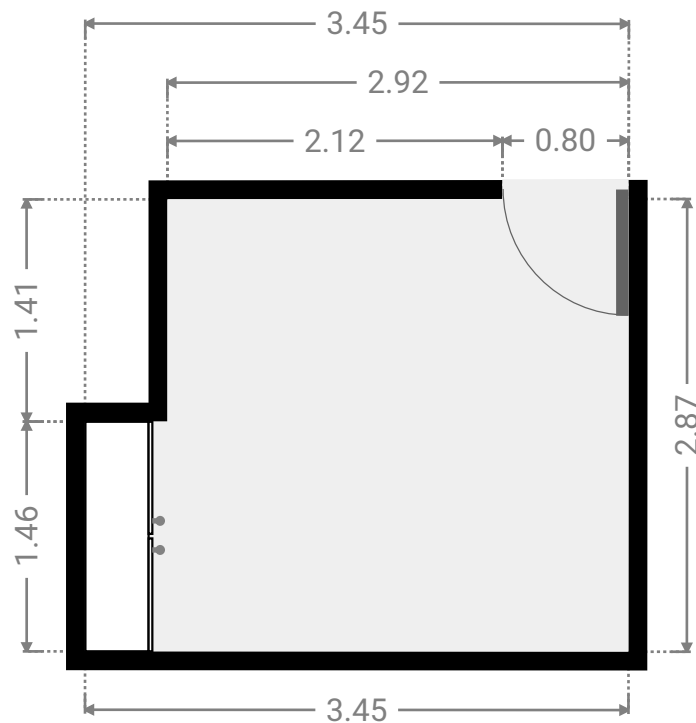
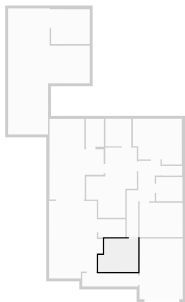
▼ **Bedroom**
Ground Floor

WIDTH: 3.72 m • LENGTH: 2.97 m
AREA: 11.05 m² • PERIMETER: 13.38 m



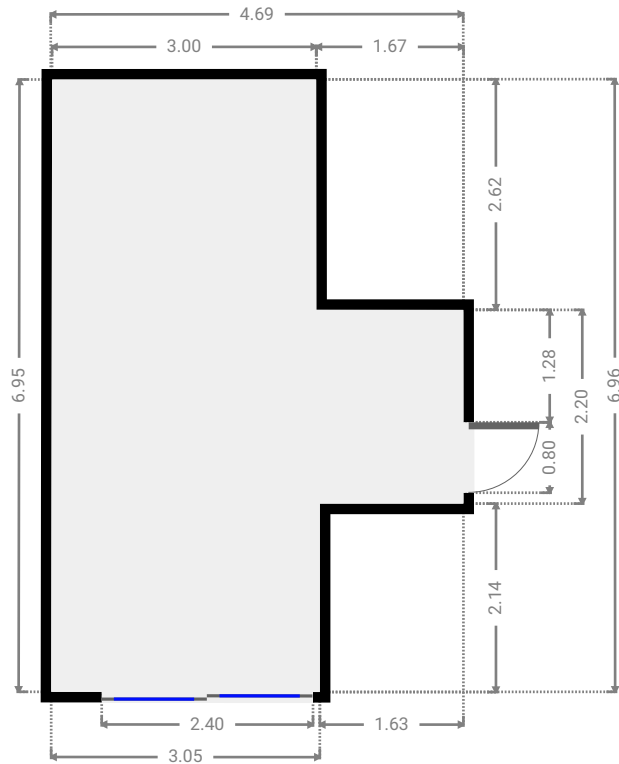
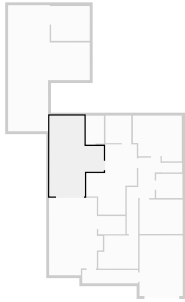
▼ **Master Bedroom**
Ground Floor

WIDTH: 3.45 m • LENGTH: 2.87 m
AREA: 9.15 m² • PERIMETER: 12.63 m



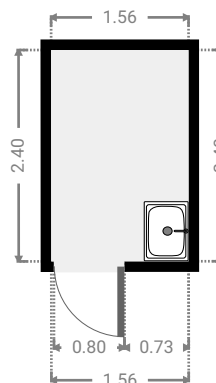
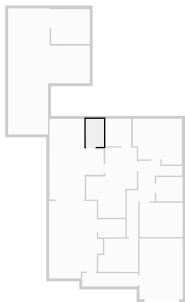
▼ **Other**
Ground Floor

WIDTH: 4.69 m • LENGTH: 6.96 m
AREA: 24.67 m² • PERIMETER: 23.26 m



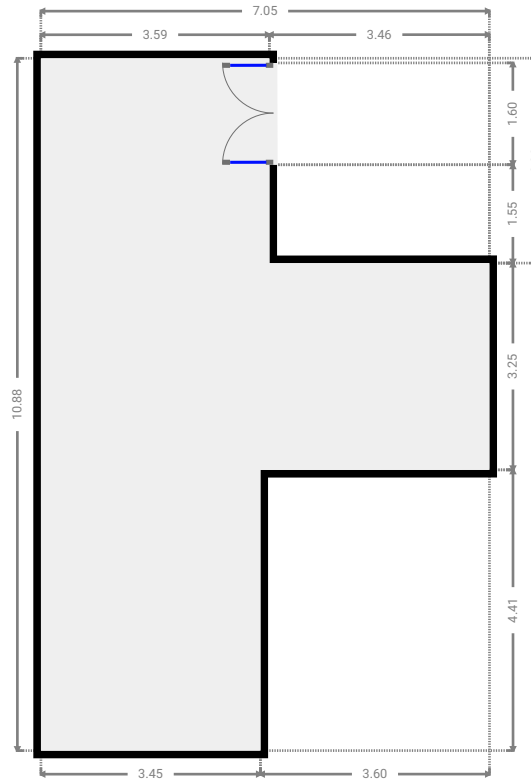
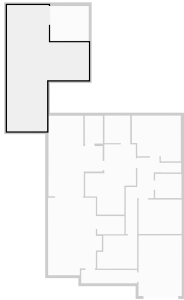
▼ **Laundry Room**
Ground Floor

WIDTH: 1.56 m • LENGTH: 2.40 m
AREA: 3.75 m² • PERIMETER: 7.92 m



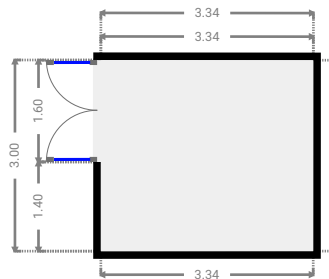
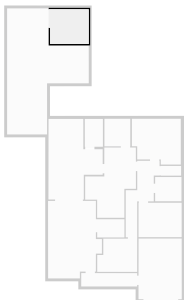
▼ **Garage**
Ground Floor

WIDTH: 7.05 m • LENGTH: 10.88 m
AREA: 49.69 m² • PERIMETER: 35.86 m



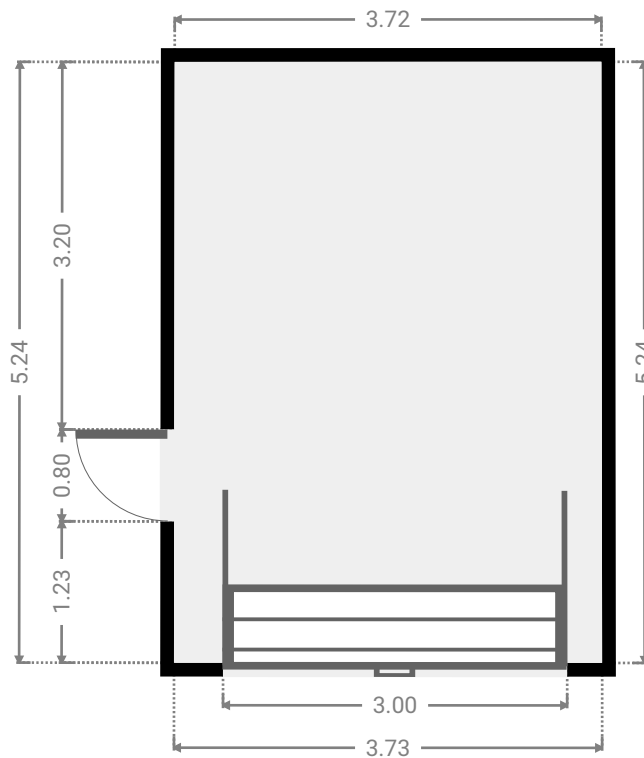
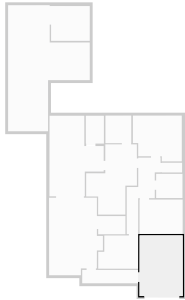
▼ **Other**
Ground Floor

WIDTH: 3.34 m • LENGTH: 3.00 m
AREA: 10.02 m² • PERIMETER: 12.68 m



▼ **Garage**
Ground Floor

WIDTH: 3.73 m • LENGTH: 5.24 m
AREA: 19.52 m² • PERIMETER: 17.93 m



▼ **Other**
Ground Floor

WIDTH: 4.83 m • LENGTH: 1.15 m
AREA: 5.56 m² • PERIMETER: 11.96 m

