

# 345 Archer Road

**SUBMITTED BY**  
Ray White Rockhampton Casey  
stockers@cqoz.com

---

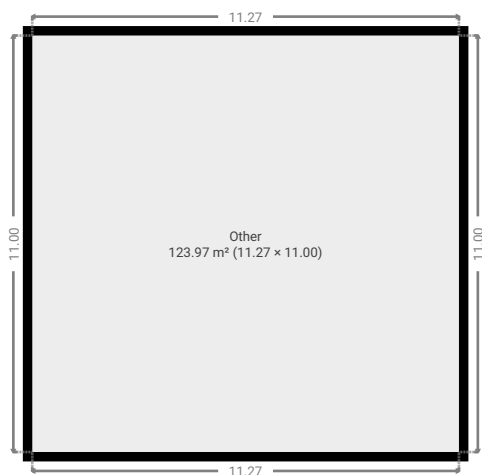
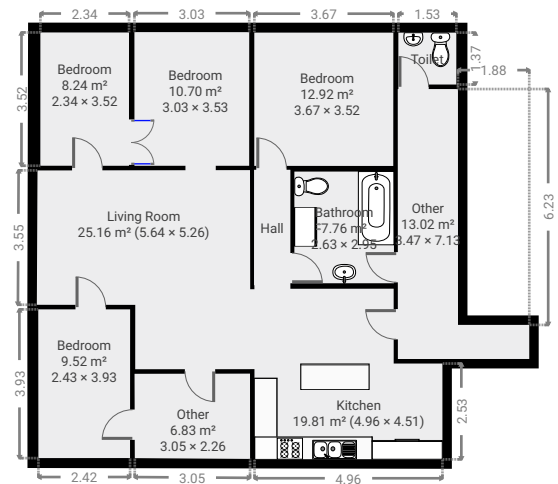
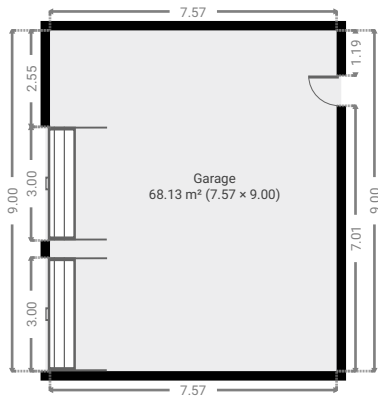
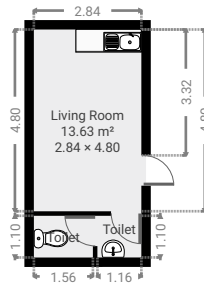
**CREATED ON**  
2022-04-13

---

**Floors**  
1

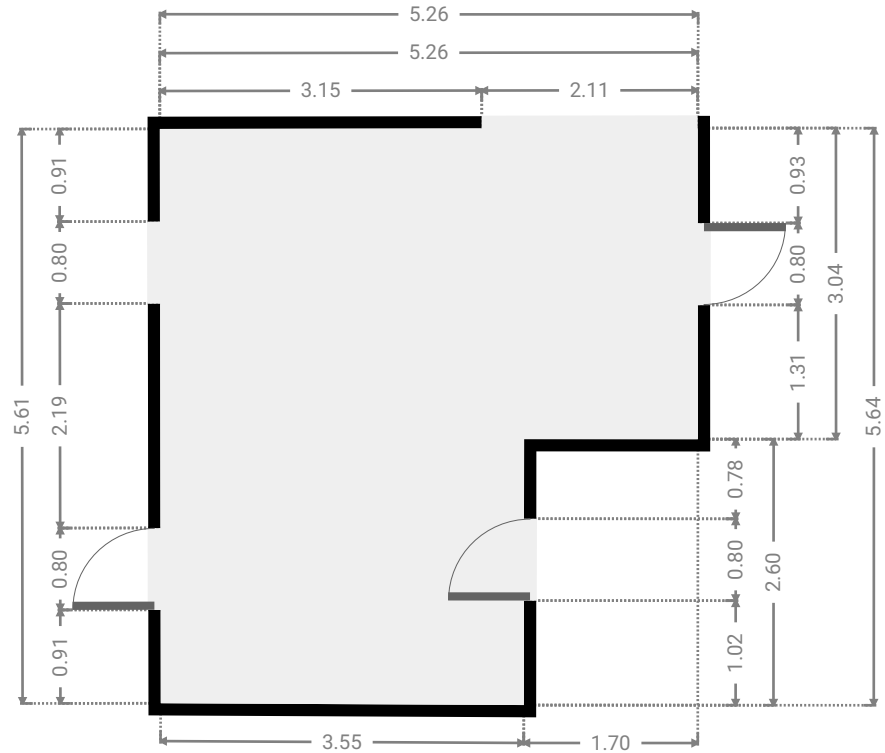
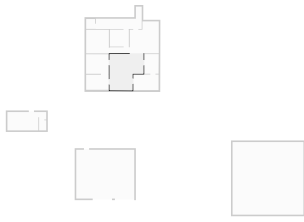
---

## ▼ Ground Floor



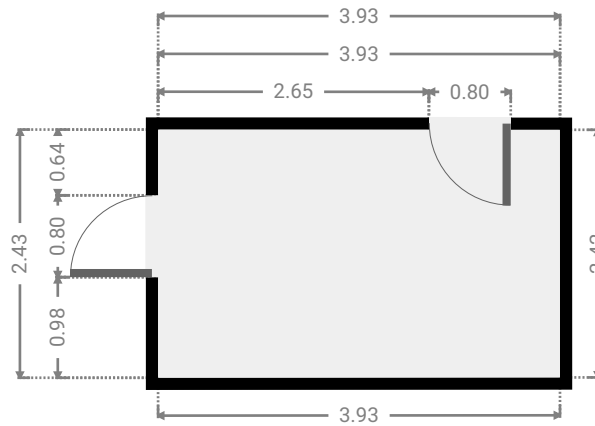
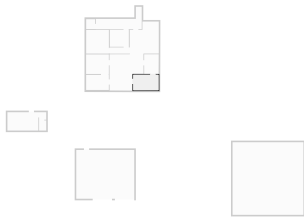
▼ **Living Room**  
Ground Floor

WIDTH: 5.26 m • LENGTH: 5.64 m  
AREA: 25.16 m<sup>2</sup> • PERIMETER: 21.76 m



▼ **Bedroom**  
Ground Floor

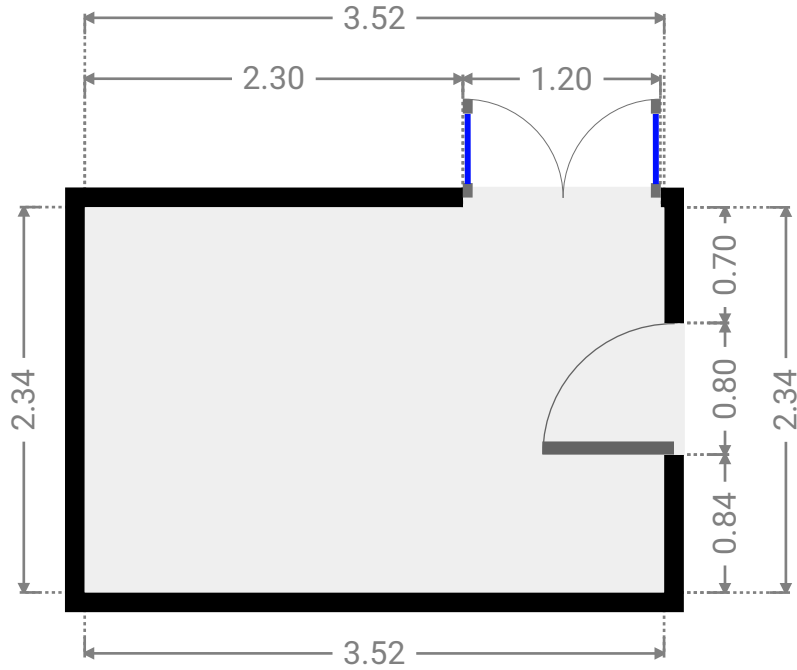
WIDTH: 3.93 m • LENGTH: 2.43 m  
AREA: 9.52 m<sup>2</sup> • PERIMETER: 12.70 m



FLOORS: 1

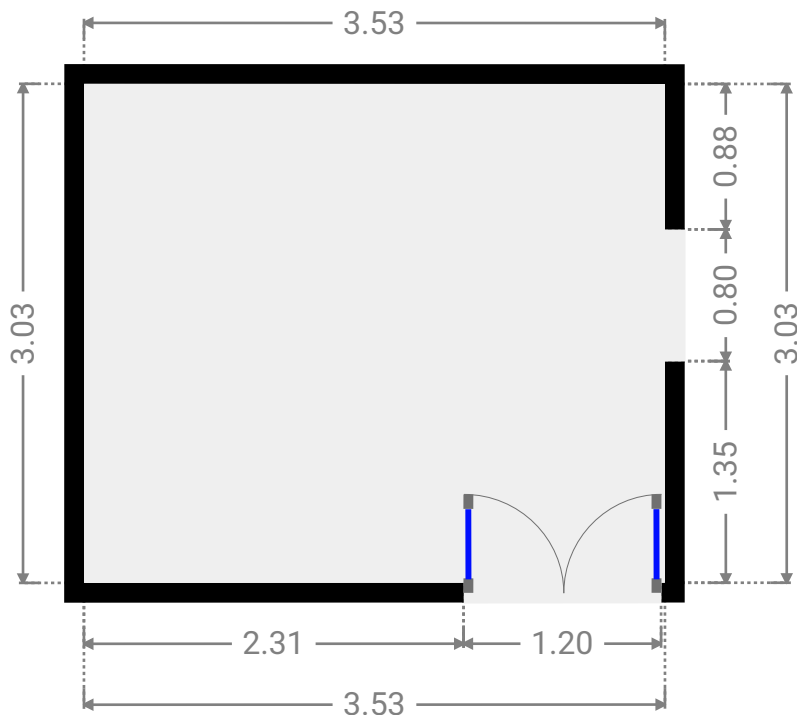
▼ Bedroom  
Ground Floor

WIDTH: 3.52 m • LENGTH: 2.34 m  
AREA: 8.24 m<sup>2</sup> • PERIMETER: 11.72 m



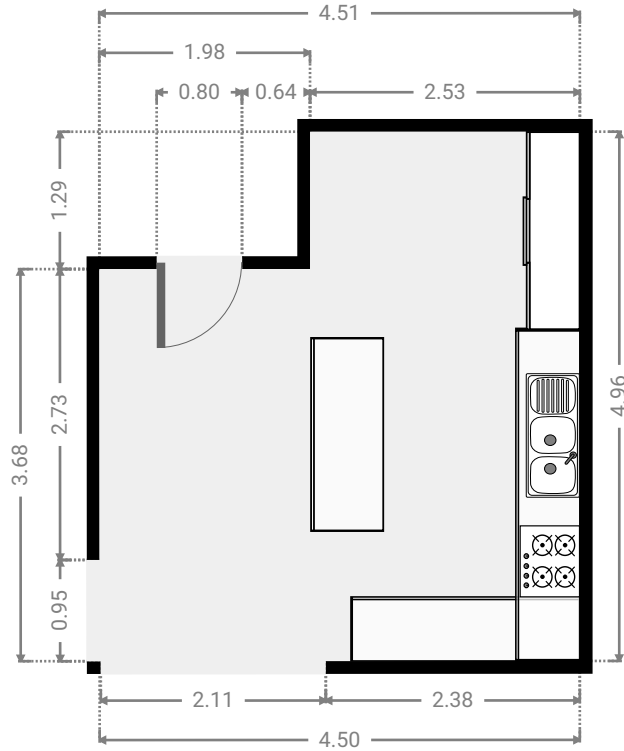
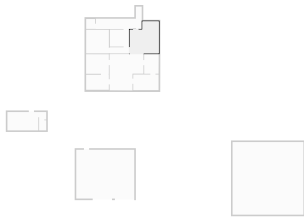
▼ Bedroom  
Ground Floor

WIDTH: 3.53 m • LENGTH: 3.03 m  
AREA: 10.70 m<sup>2</sup> • PERIMETER: 13.12 m



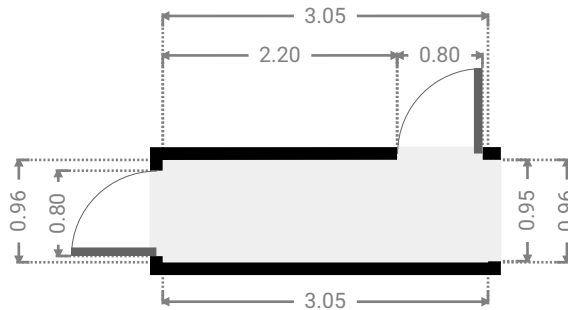
▼ **Kitchen**  
Ground Floor

WIDTH: 4.51 m • LENGTH: 4.96 m  
AREA: 19.81 m<sup>2</sup> • PERIMETER: 18.94 m



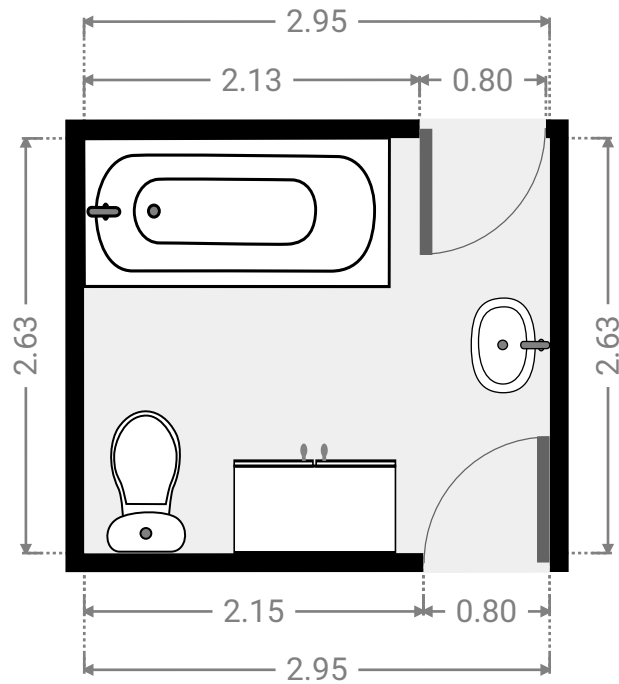
▼ **Hall**  
Ground Floor

WIDTH: 3.05 m • LENGTH: 0.96 m  
AREA: 2.93 m<sup>2</sup> • PERIMETER: 8.02 m



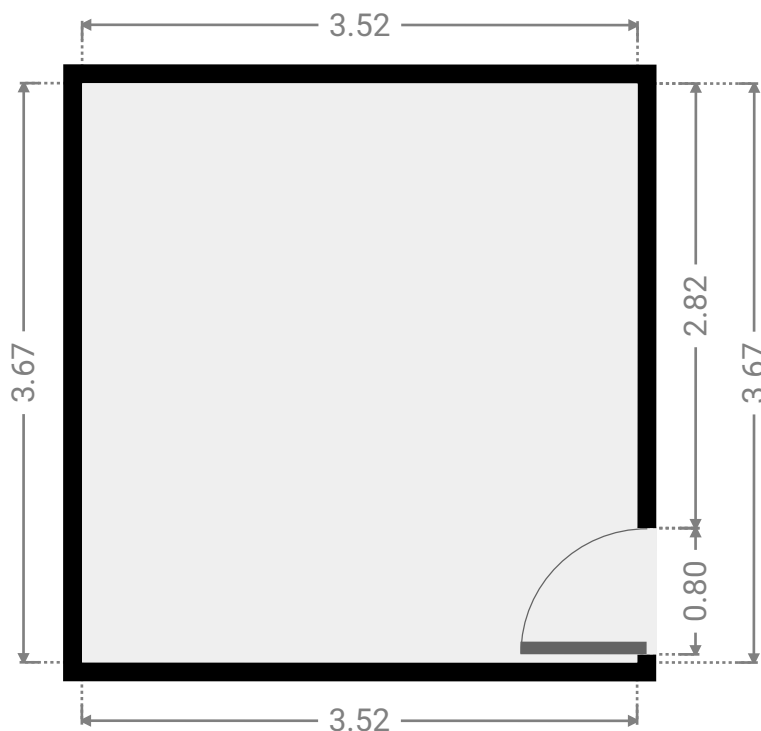
▼ Bathroom  
Ground Floor

WIDTH: 2.95 m • LENGTH: 2.63 m  
AREA: 7.76 m<sup>2</sup> • PERIMETER: 11.16 m



▼ Bedroom  
Ground Floor

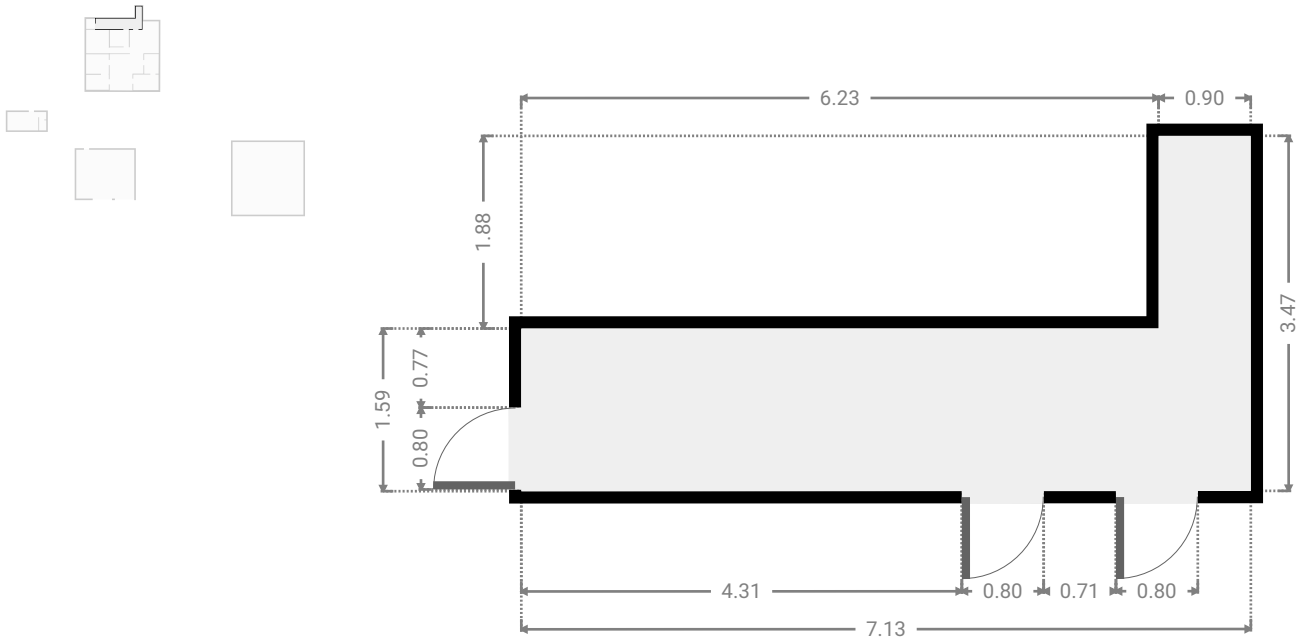
WIDTH: 3.52 m • LENGTH: 3.67 m  
AREA: 12.92 m<sup>2</sup> • PERIMETER: 14.38 m



FLOORS: 1

▼ Other  
Ground Floor

WIDTH: 7.13 m • LENGTH: 3.47 m  
AREA: 13.02 m<sup>2</sup> • PERIMETER: 21.20 m



▼ Toilet  
Ground Floor

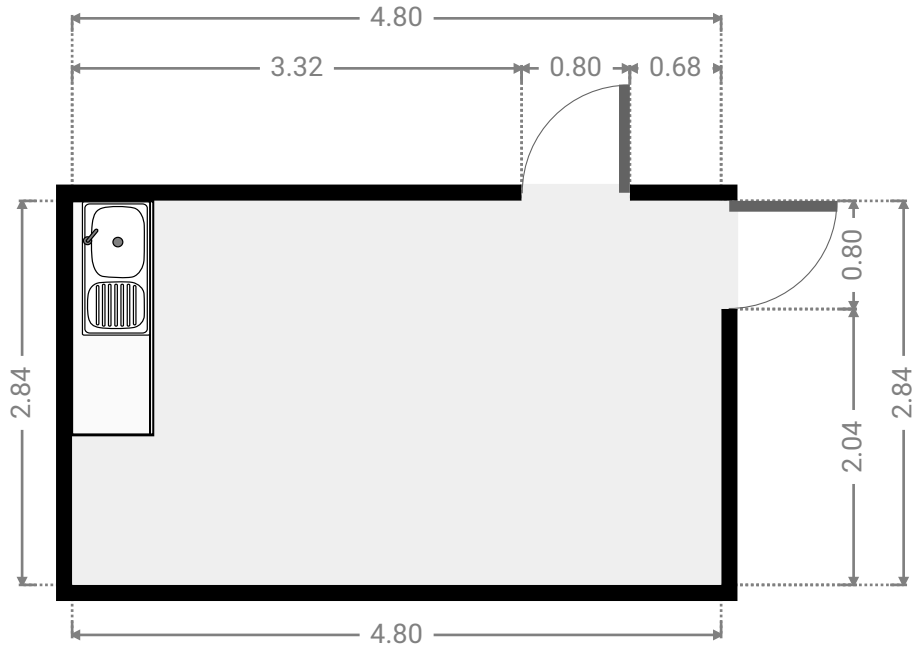
WIDTH: 1.37 m • LENGTH: 1.53 m  
AREA: 2.10 m<sup>2</sup> • PERIMETER: 5.80 m



FLOORS: 1

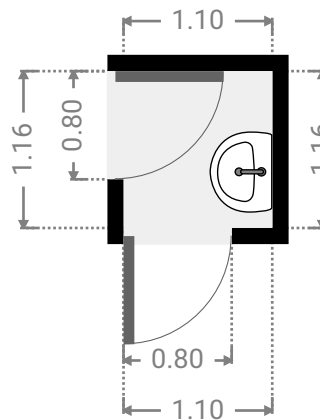
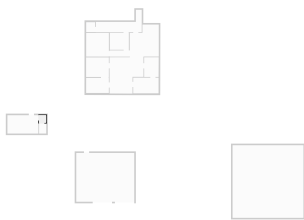
▼ Living Room  
Ground Floor

WIDTH: 4.80 m • LENGTH: 2.84 m  
AREA: 13.63 m<sup>2</sup> • PERIMETER: 15.28 m



▼ Toilet  
Ground Floor

WIDTH: 1.10 m • LENGTH: 1.16 m  
AREA: 1.28 m<sup>2</sup> • PERIMETER: 4.52 m

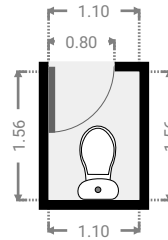
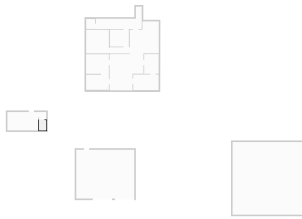




FLOORS: 1

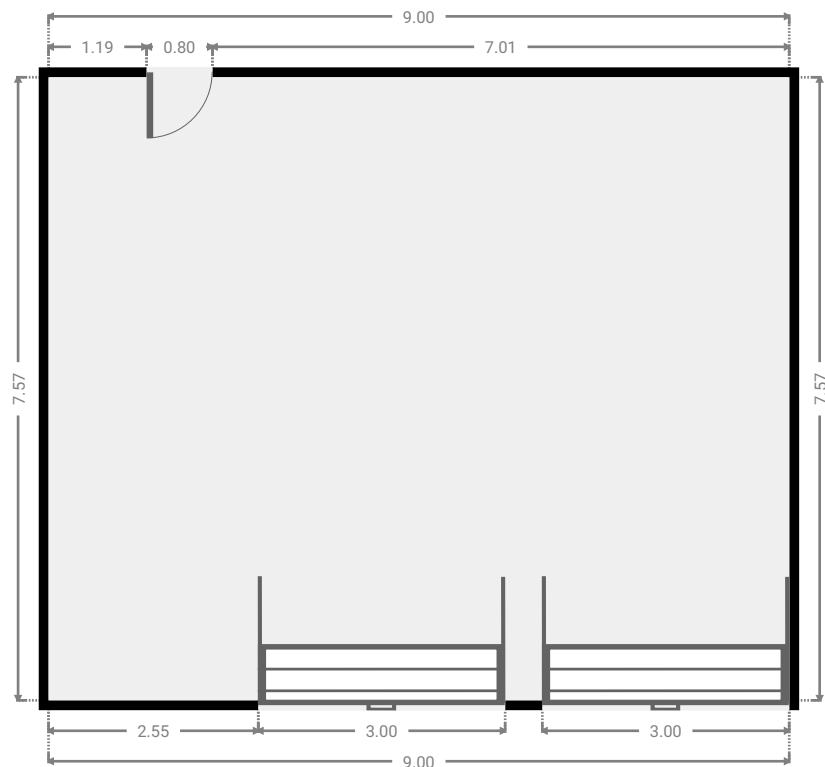
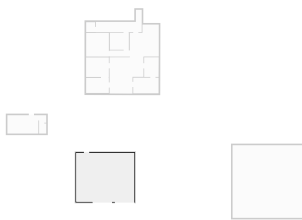
▼ Toilet  
Ground Floor

WIDTH: 1.10 m • LENGTH: 1.56 m  
AREA: 1.72 m<sup>2</sup> • PERIMETER: 5.32 m



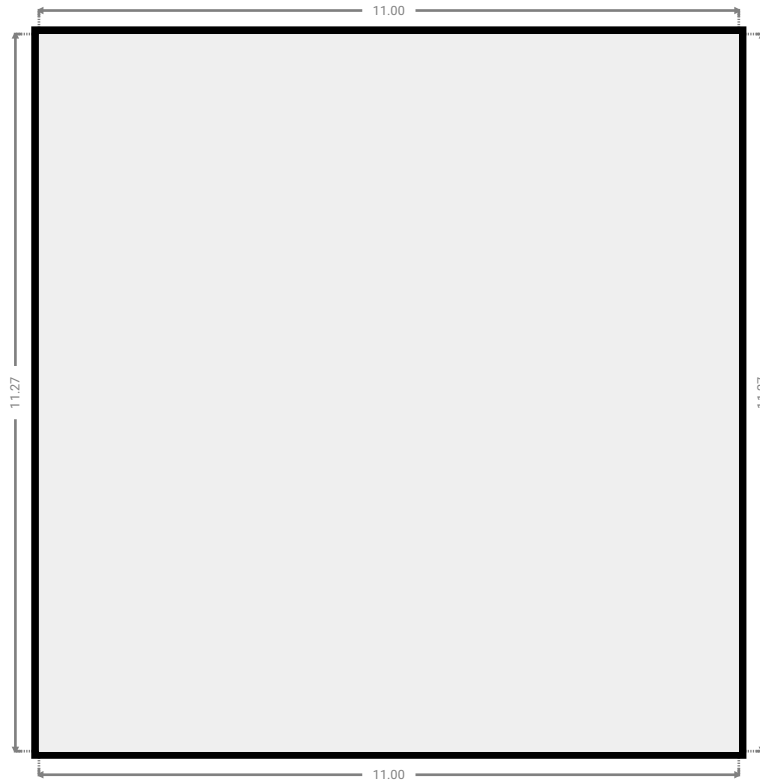
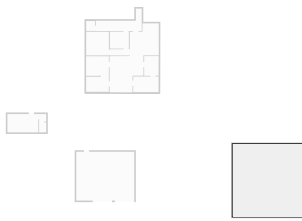
▼ Garage  
Ground Floor

WIDTH: 9.00 m • LENGTH: 7.57 m  
AREA: 68.13 m<sup>2</sup> • PERIMETER: 33.14 m



▼ Other  
Ground Floor

WIDTH: 11.00 m • LENGTH: 11.27 m  
AREA: 123.97 m<sup>2</sup> • PERIMETER: 44.54 m



▼ Other  
Ground Floor

WIDTH: 2.26 m • LENGTH: 3.05 m  
AREA: 6.83 m<sup>2</sup> • PERIMETER: 10.57 m

