

340 Dean Street

SUBMITTED BY

Ray White Rockhampton Casey
stockers@cqoz.com

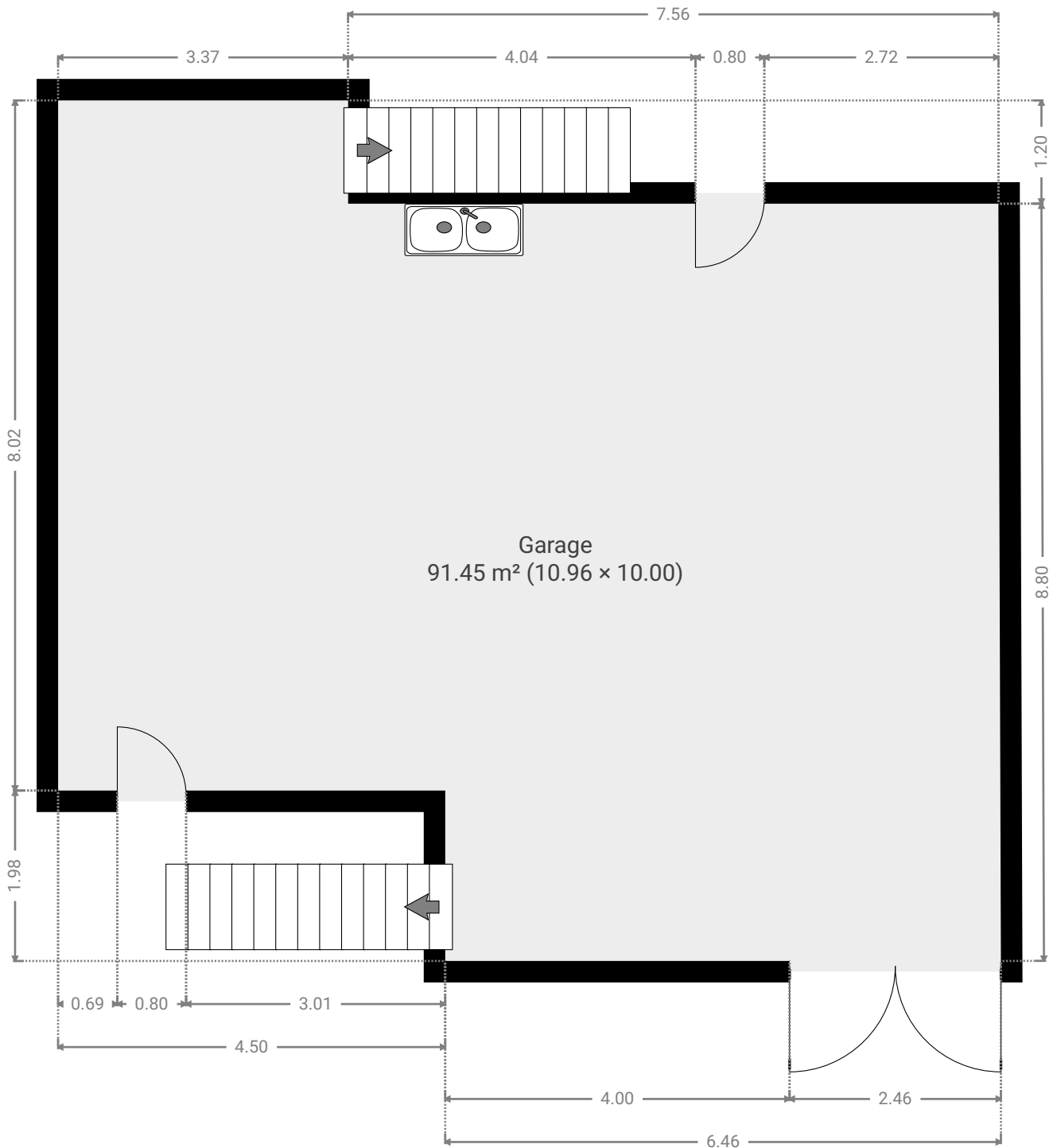
CREATED ON

2022-11-28

Floors

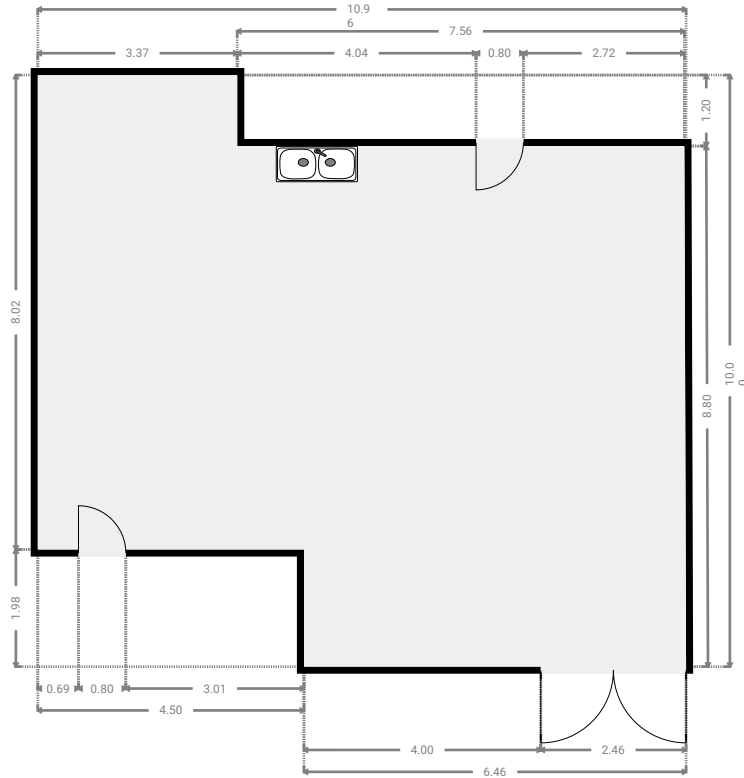
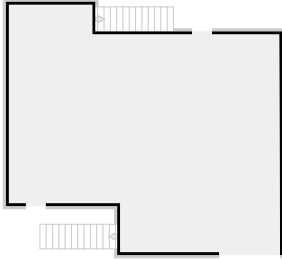
2

▼ Ground Floor

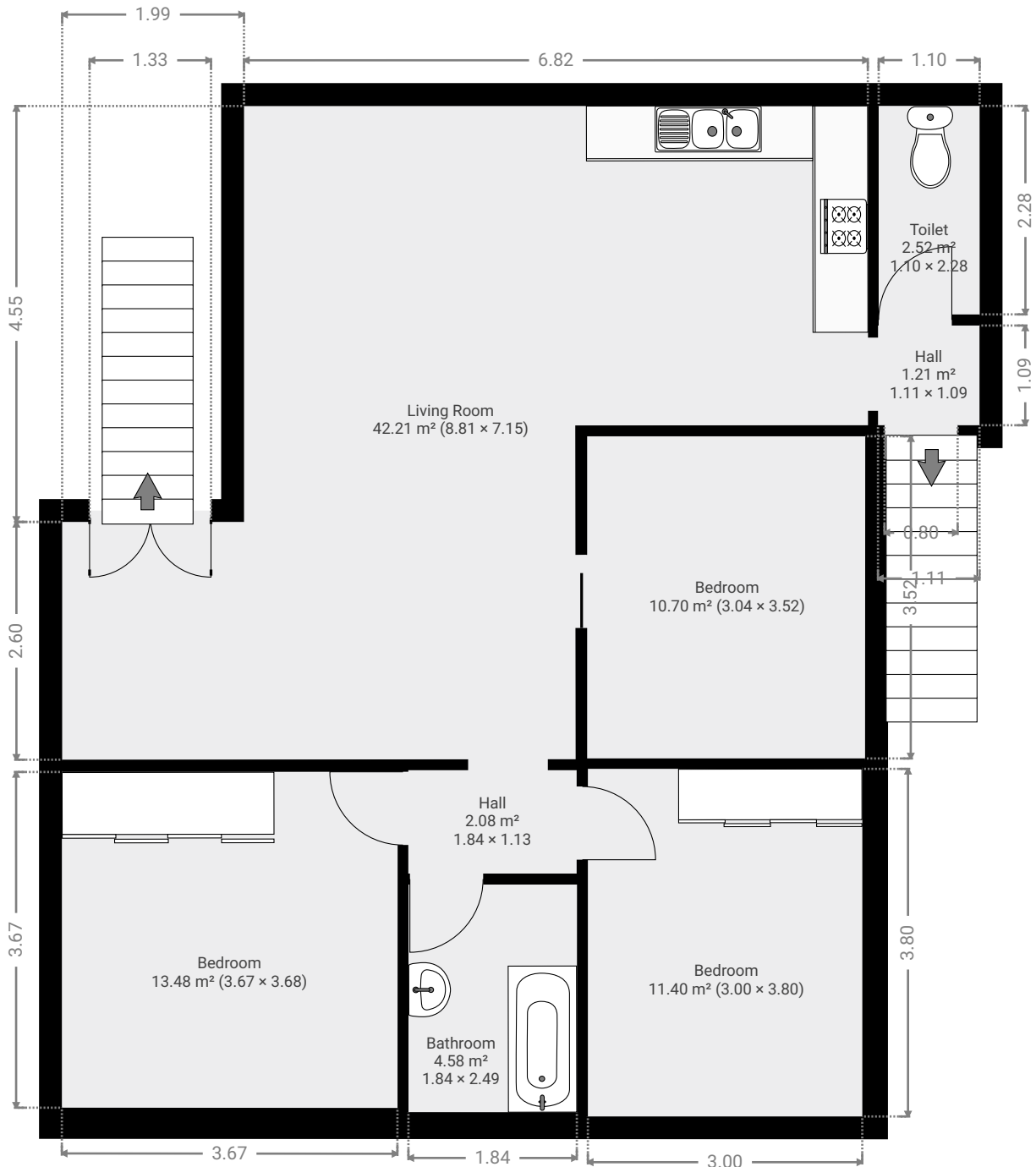


▼ **Garage**
Ground Floor

WIDTH: 10.96 m • LENGTH: 10.00 m
AREA: 91.45 m² • PERIMETER: 41.89 m

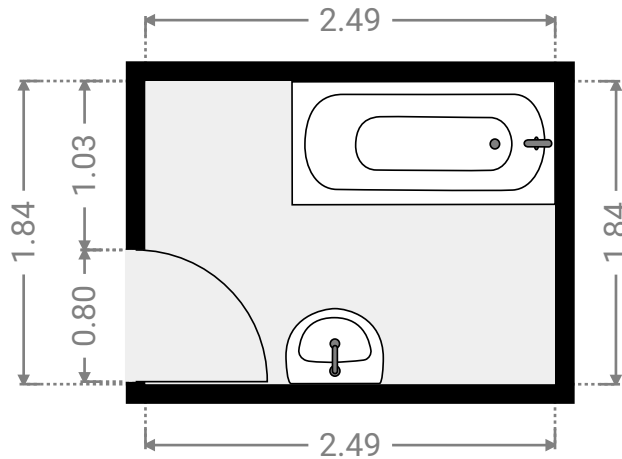
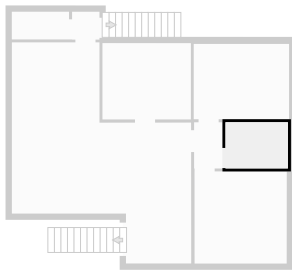


▼ 1st Floor



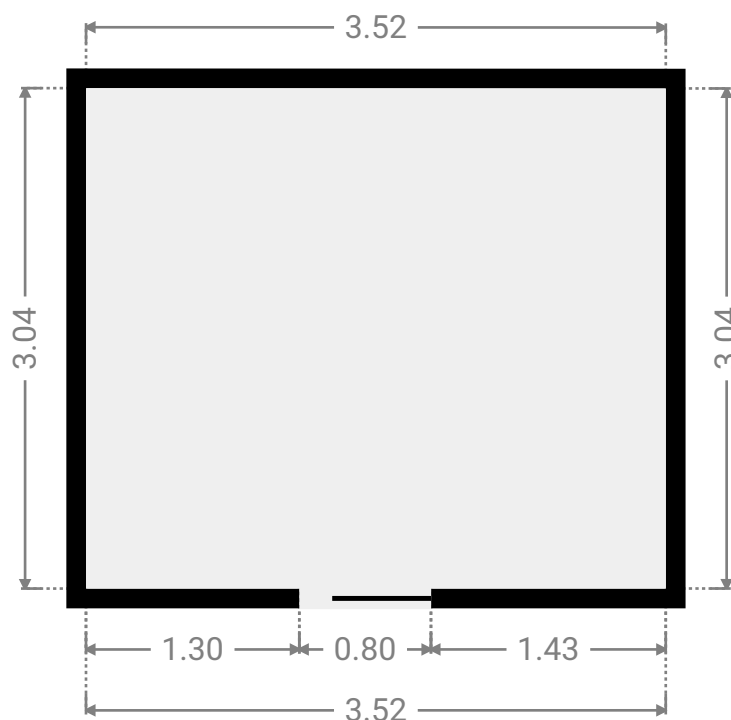
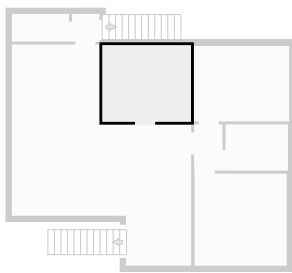
▼ **Bathroom**
1st Floor

WIDTH: 2.49 m • LENGTH: 1.84 m
AREA: 4.58 m² • PERIMETER: 8.66 m



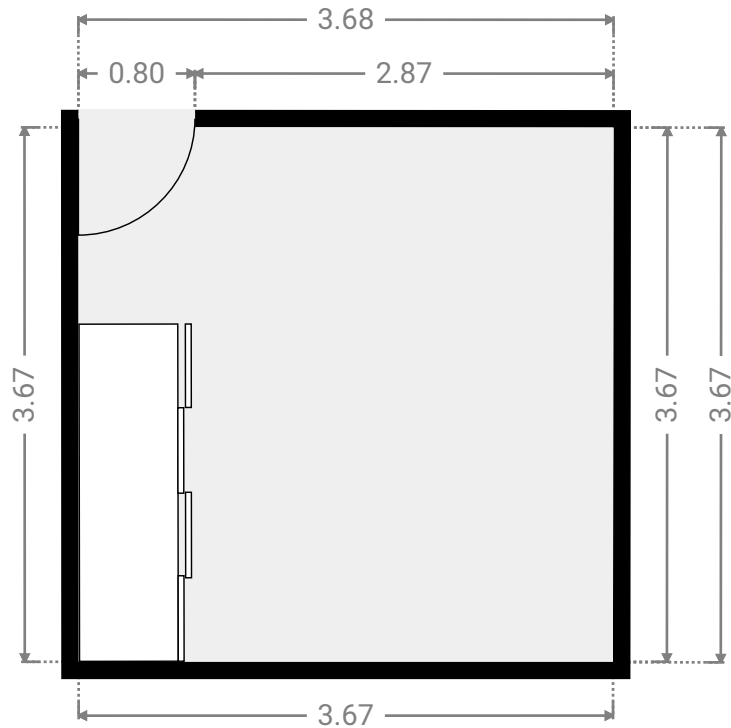
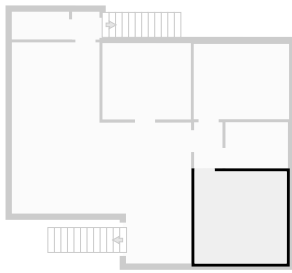
▼ **Bedroom**
1st Floor

WIDTH: 3.52 m • LENGTH: 3.04 m
AREA: 10.70 m² • PERIMETER: 13.12 m



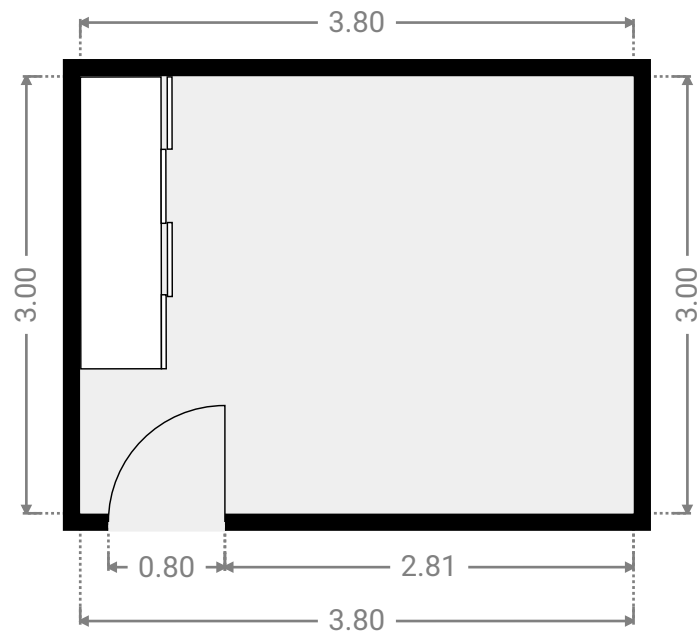
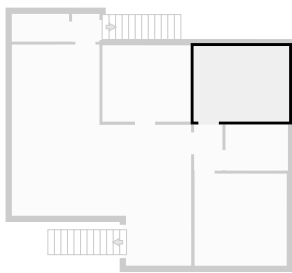
▼ **Bedroom**
1st Floor

WIDTH: 3.68 m • LENGTH: 3.67 m
AREA: 13.48 m² • PERIMETER: 14.68 m



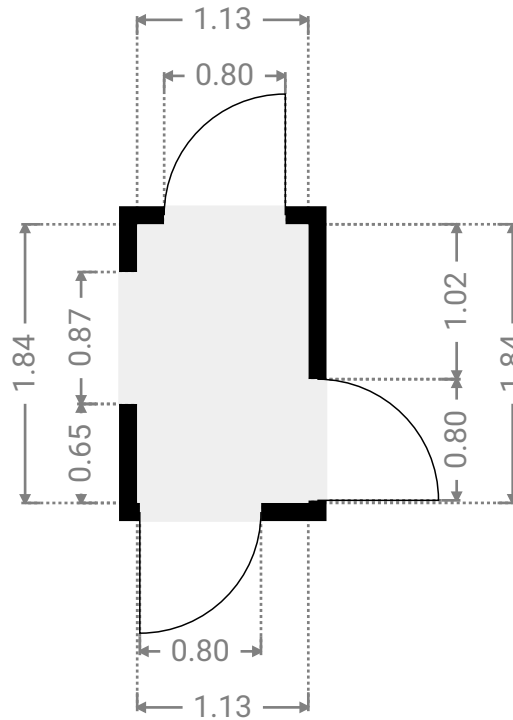
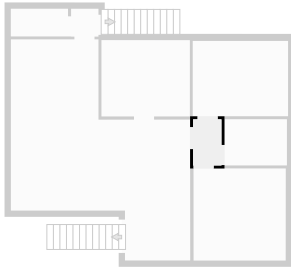
▼ **Bedroom**
1st Floor

WIDTH: 3.80 m • LENGTH: 3.00 m
AREA: 11.40 m² • PERIMETER: 13.60 m



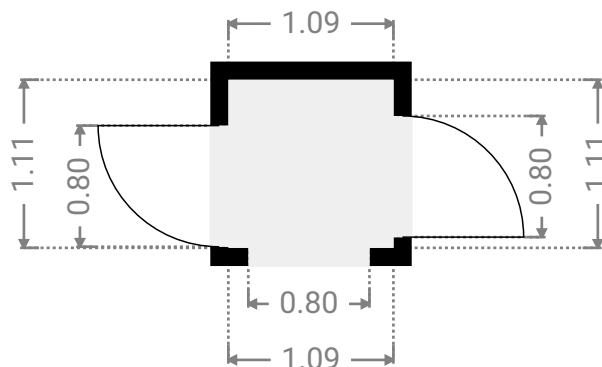
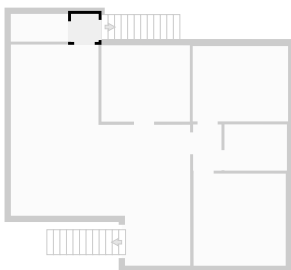
▼ **Hall**
1st Floor

WIDTH: 1.13 m • LENGTH: 1.84 m
AREA: 2.08 m² • PERIMETER: 5.94 m



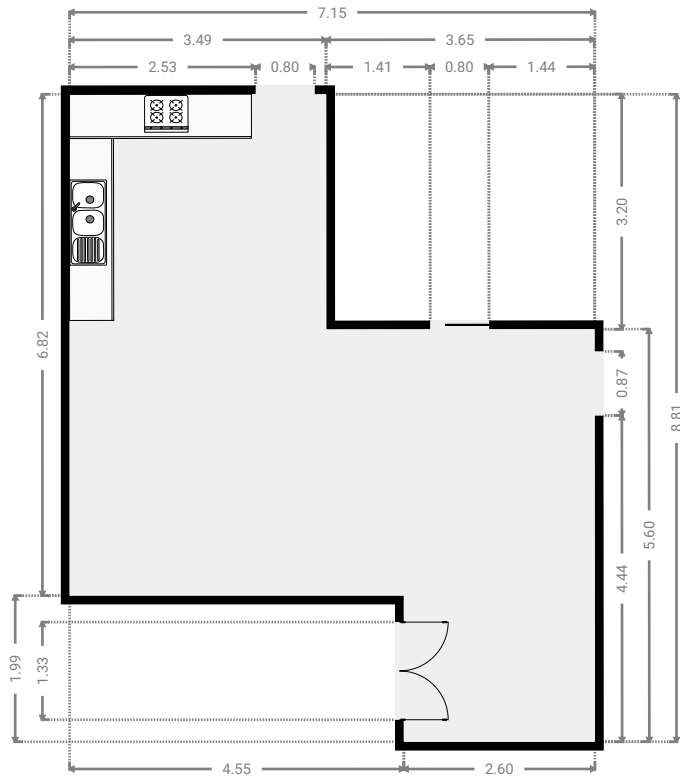
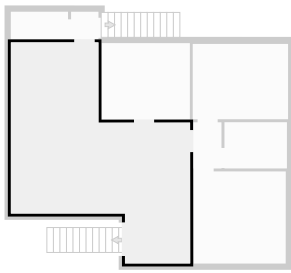
▼ **Hall**
1st Floor

WIDTH: 1.09 m • LENGTH: 1.11 m
AREA: 1.21 m² • PERIMETER: 4.40 m



▼ Living Room
1st Floor

WIDTH: 7.15 m • LENGTH: 8.81 m
AREA: 42.21 m² • PERIMETER: 31.91 m



▼ Toilet
1st Floor

WIDTH: 2.28 m • LENGTH: 1.10 m
AREA: 2.52 m² • PERIMETER: 6.77 m

