

340 Campbell Street

SUBMITTED BY

Ray White Rockhampton Casey
stockers@cqoz.com

CREATED ON

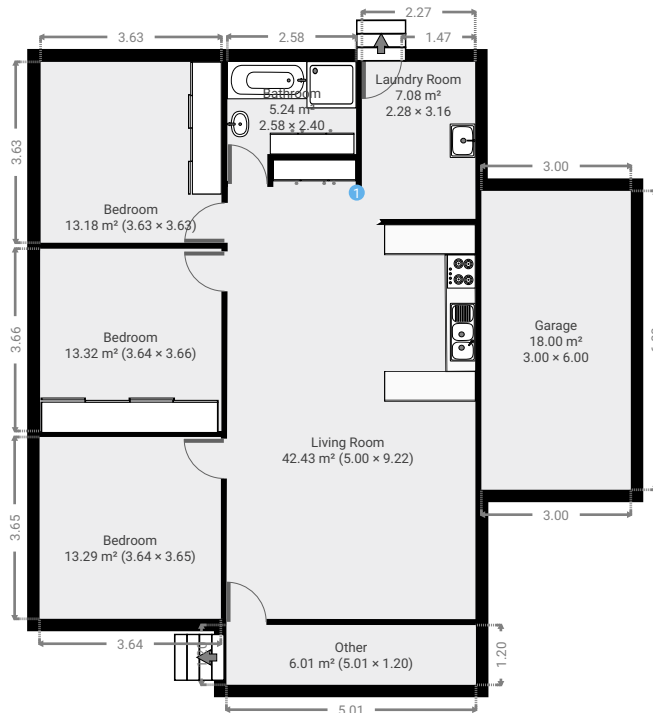
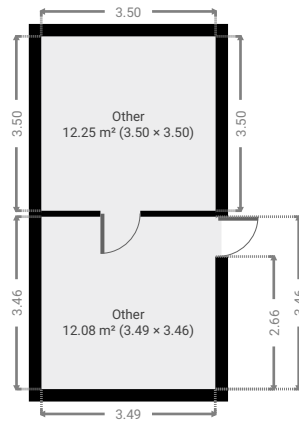
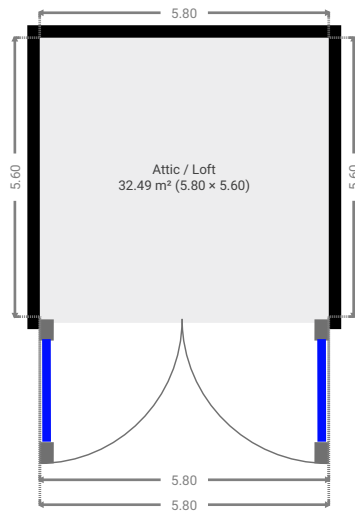
2022-07-11

Floors

1

FLOORS: 1

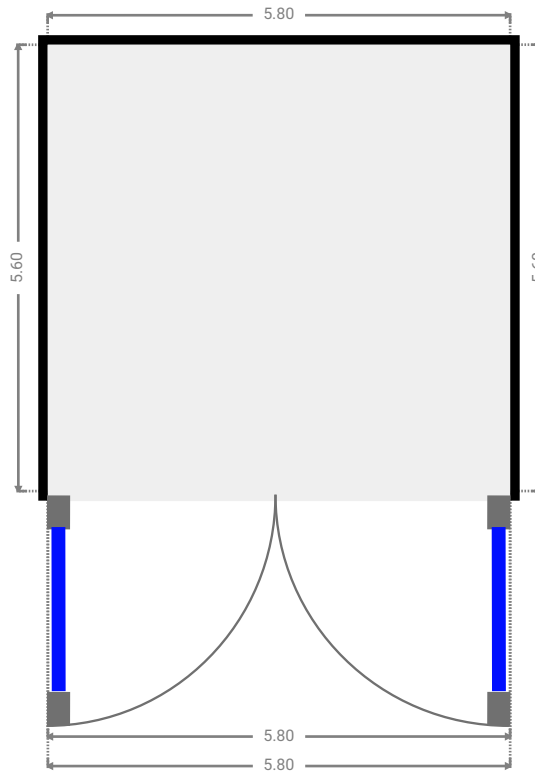
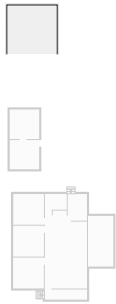
▼ Ground Floor



THIS FLOORPLAN IS PROVIDED WITHOUT WARRANTY OF ANY KIND. SENSOPIA DISCLAIMS ANY WARRANTY INCLUDING, WITHOUT LIMITATION, SATISFACTORY QUALITY OR ACCURACY OF DIMENSIONS.

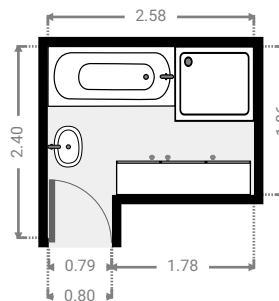
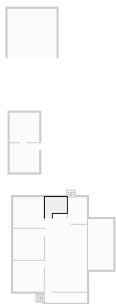
▼ **Attic / Loft**
Ground Floor

WIDTH: 5.80 m • LENGTH: 5.60 m
AREA: 32.49 m² • PERIMETER: 22.80 m



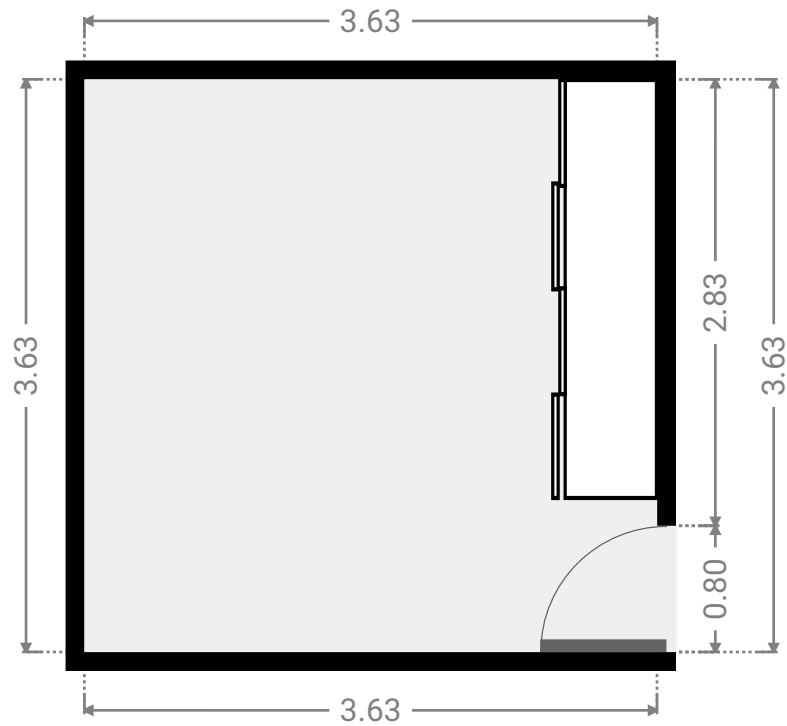
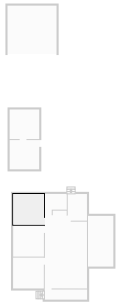
▼ **Bathroom**
Ground Floor

WIDTH: 2.58 m • LENGTH: 2.40 m
AREA: 5.24 m² • PERIMETER: 9.97 m



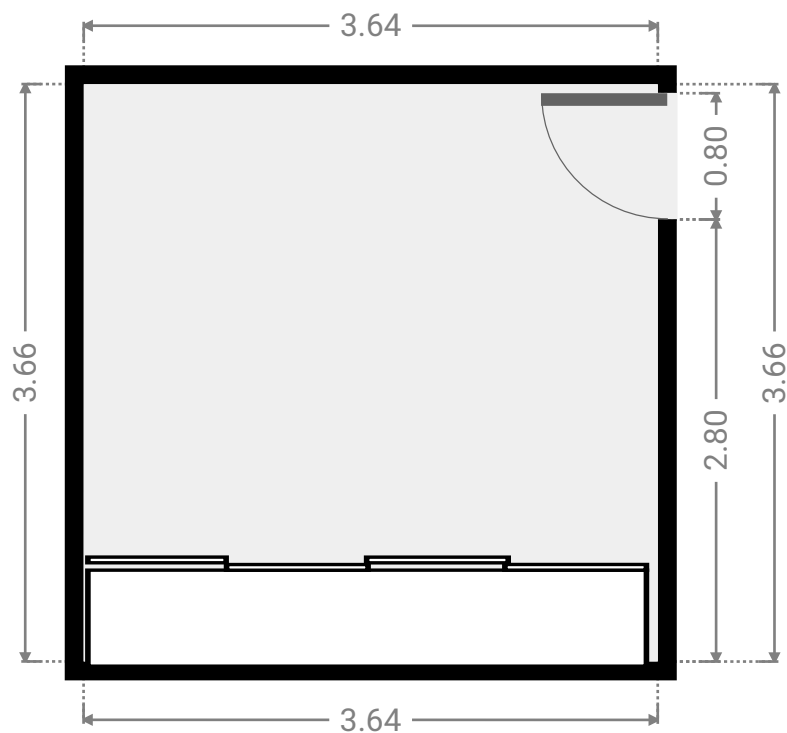
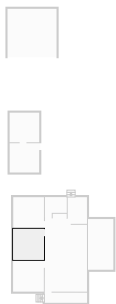
▼ **Bedroom**
Ground Floor

WIDTH: 3.63 m • LENGTH: 3.63 m
AREA: 13.18 m² • PERIMETER: 14.52 m



▼ **Bedroom**
Ground Floor

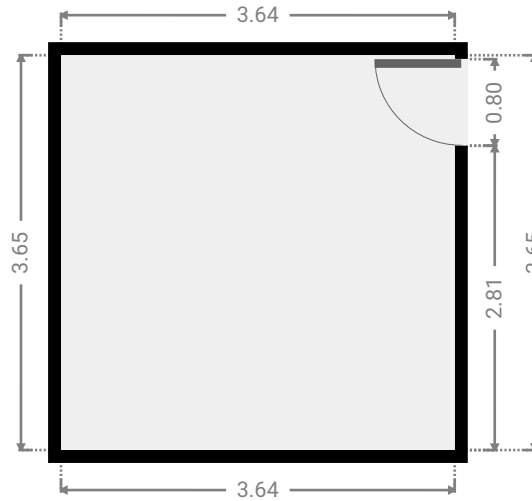
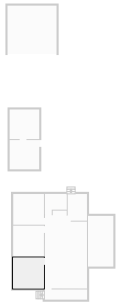
WIDTH: 3.64 m • LENGTH: 3.66 m
AREA: 13.32 m² • PERIMETER: 14.60 m



FLOORS: 1

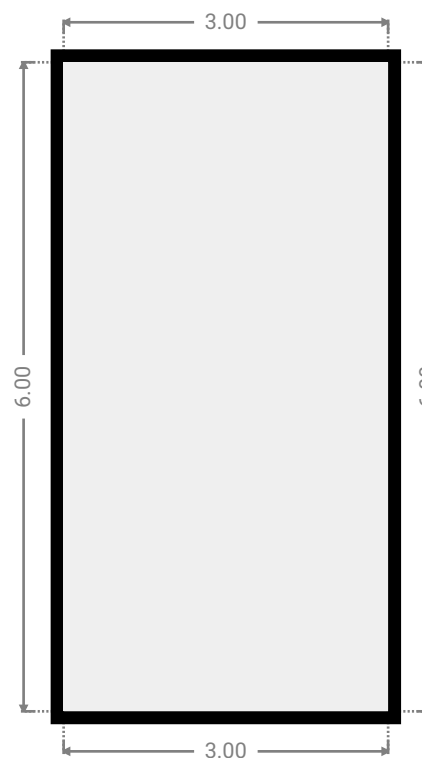
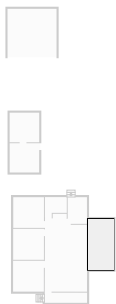
▼ **Bedroom**
Ground Floor

WIDTH: 3.64 m • LENGTH: 3.65 m
AREA: 13.29 m² • PERIMETER: 14.58 m



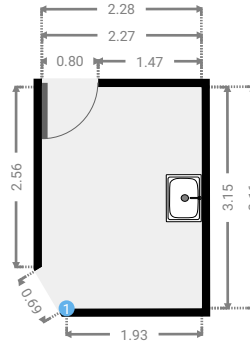
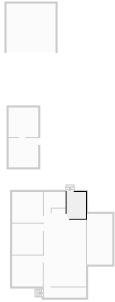
▼ **Garage**
Ground Floor

WIDTH: 3.00 m • LENGTH: 6.00 m
AREA: 18.00 m² • PERIMETER: 18.00 m



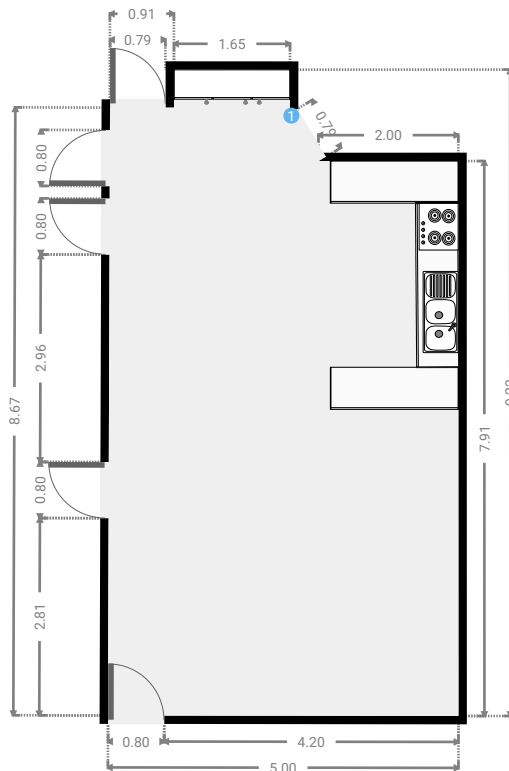
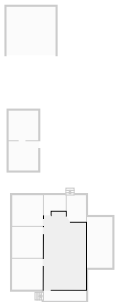
▼ Laundry Room
Ground Floor

WIDTH: 2.28 m • LENGTH: 3.16 m
AREA: 7.08 m² • PERIMETER: 10.61 m



▼ Living Room
Ground Floor

WIDTH: 5.00 m • LENGTH: 9.22 m
AREA: 42.43 m² • PERIMETER: 28.10 m



▼ Living Room/Ground Floor

1 OPENING

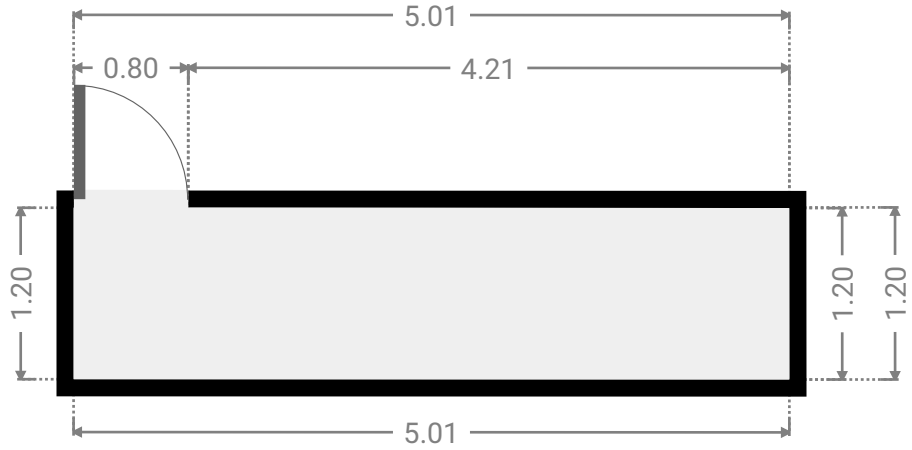
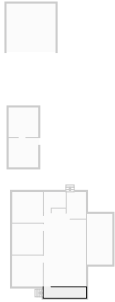
Height
0.00 m



FLOORS: 1

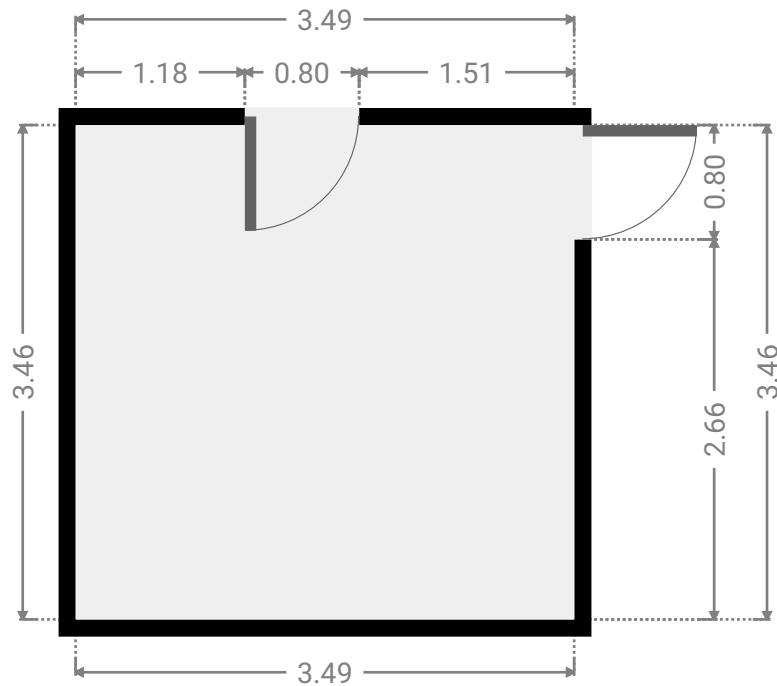
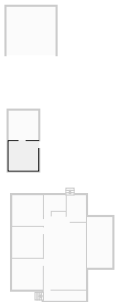
▼ Other
Ground Floor

WIDTH: 5.01 m • LENGTH: 1.20 m
AREA: 6.01 m² • PERIMETER: 12.42 m



▼ Other
Ground Floor

WIDTH: 3.49 m • LENGTH: 3.46 m
AREA: 12.08 m² • PERIMETER: 13.90 m



▼ Other
Ground Floor

WIDTH: 3.50 m • LENGTH: 3.50 m
AREA: 12.25 m² • PERIMETER: 14.00 m

