

34 Brosnan Crescent

SUBMITTED BY

Ray White Rockhampton Casey
stockers@cqoz.com

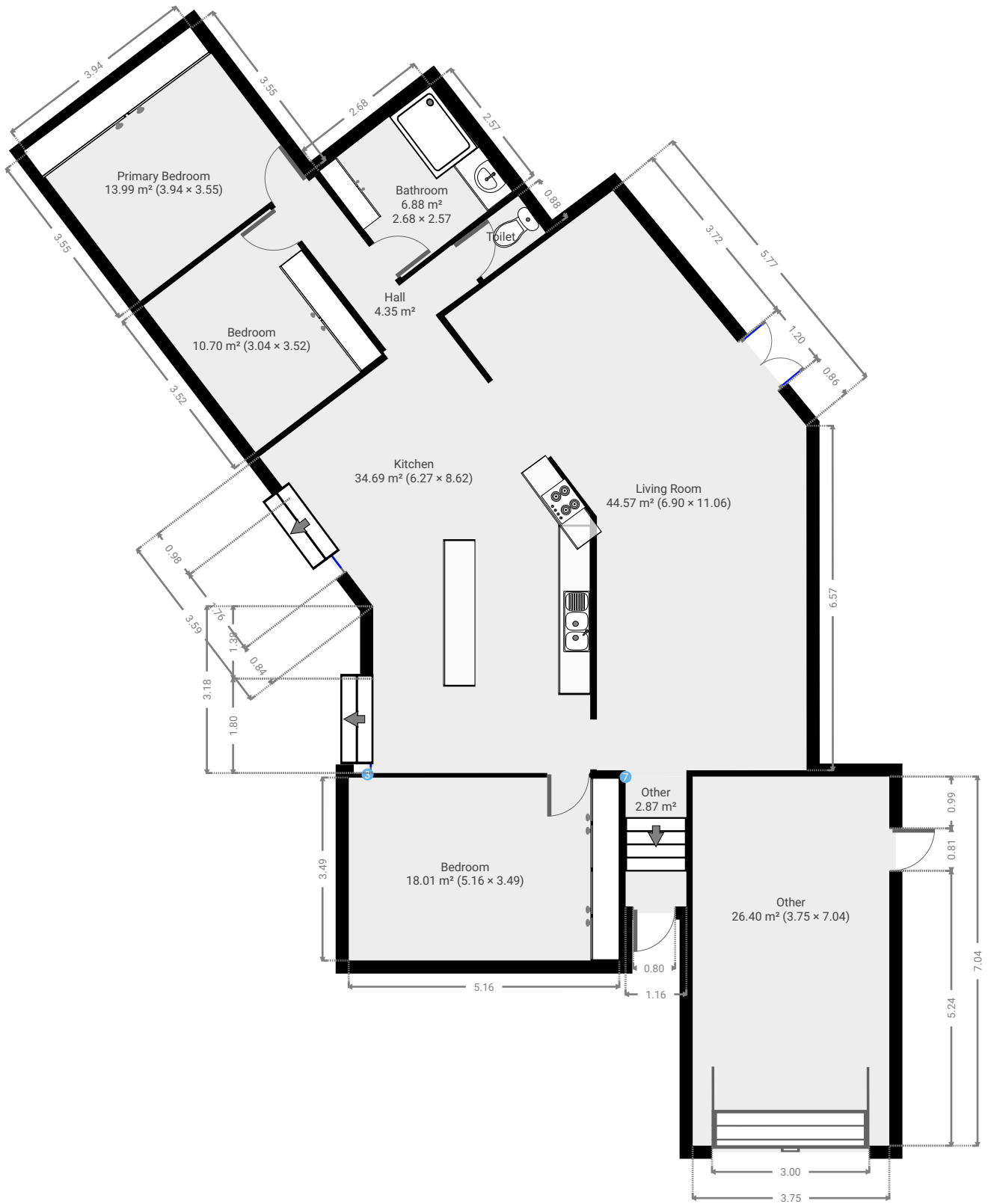
CREATED ON

2022-05-05

Floors

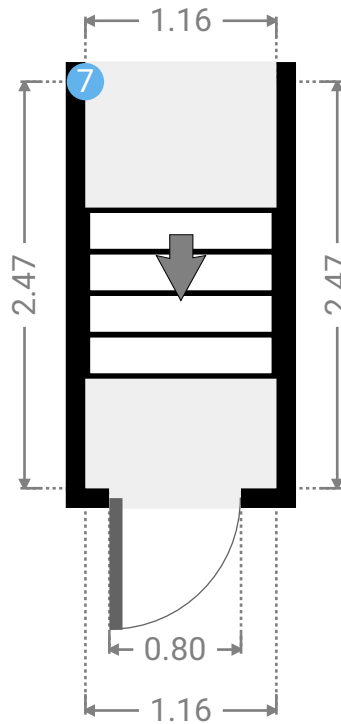
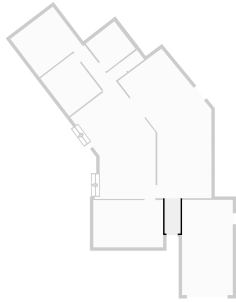
1

▼ Ground Floor



▼ Other Ground Floor

WIDTH: 1.16 m • LENGTH: 2.47 m
AREA: 2.87 m² • PERIMETER: 7.26 m



▼ Other/Ground Floor

7 OPENING

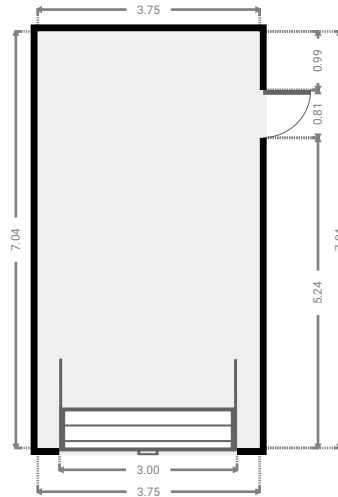
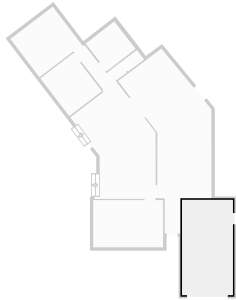
Height
0.00 m



FLOORS: 1

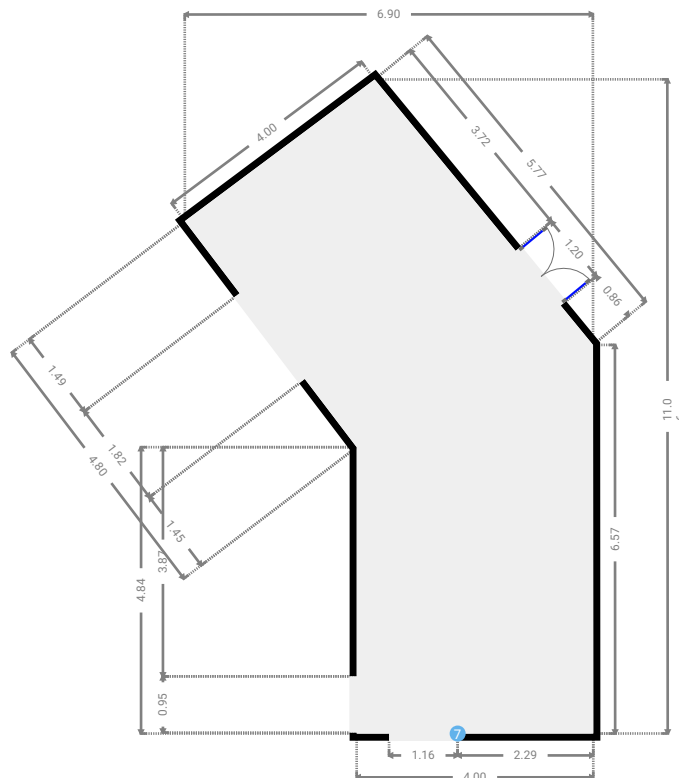
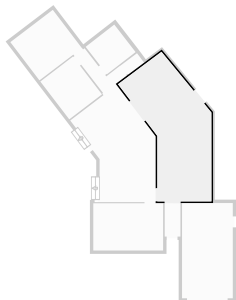
▼ Other
Ground Floor

WIDTH: 3.75 m • LENGTH: 7.04 m
AREA: 26.40 m² • PERIMETER: 21.58 m



▼ Living Room
Ground Floor

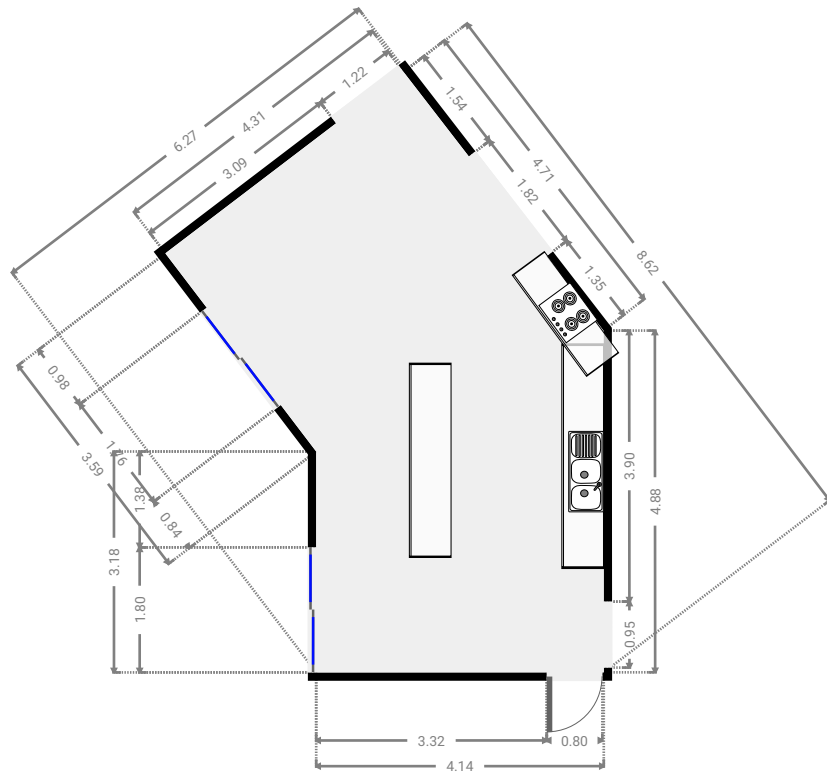
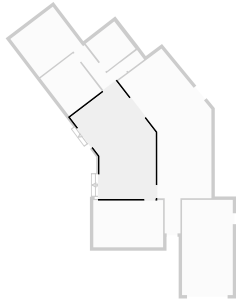
WIDTH: 6.90 m • LENGTH: 11.06 m
AREA: 44.57 m² • PERIMETER: 30.02 m



FLOORS: 1

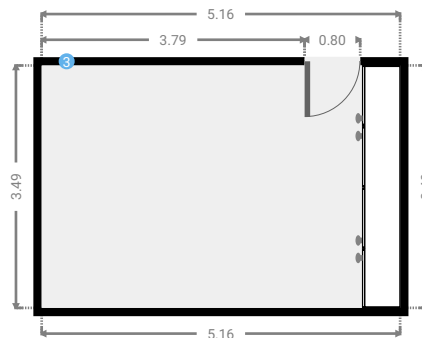
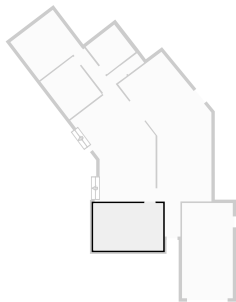
▼ **Kitchen**
Ground Floor

WIDTH: 6.27 m • LENGTH: 8.62 m
AREA: 34.69 m² • PERIMETER: 24.84 m



▼ **Bedroom**
Ground Floor

WIDTH: 5.16 m • LENGTH: 3.49 m
AREA: 18.01 m² • PERIMETER: 17.30 m



▼ Bedroom/Ground Floor

3 WALL

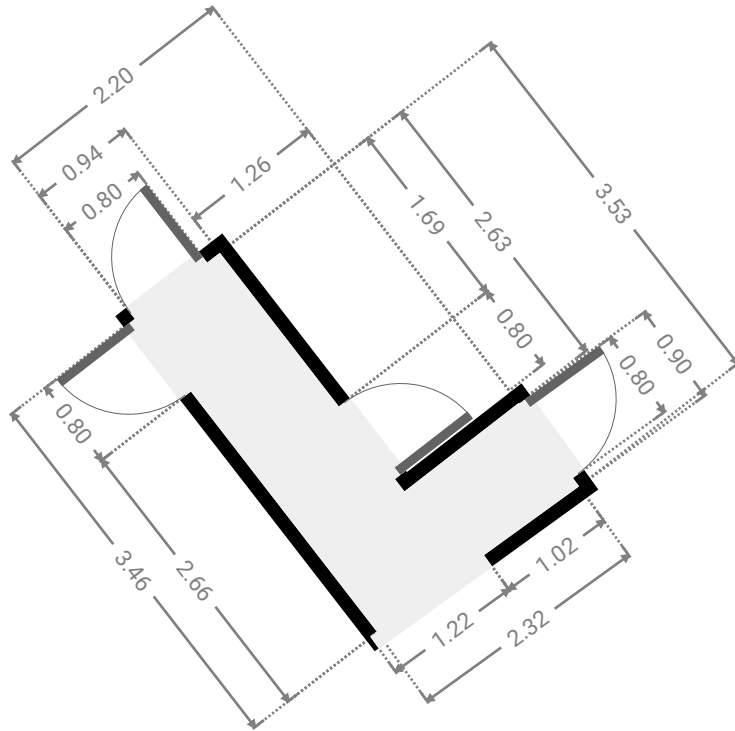
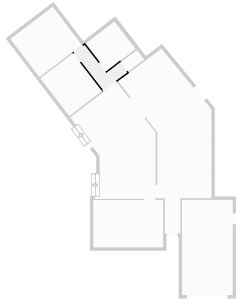
Notes
E



FLOORS: 1

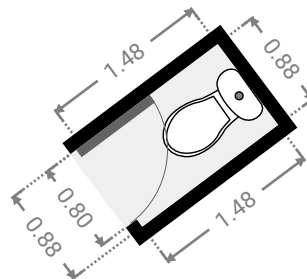
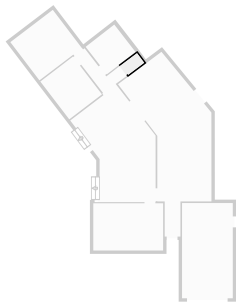
▼ **Hall**
Ground Floor

WIDTH: 2.20 m • LENGTH: 3.53 m
AREA: 4.35 m² • PERIMETER: 11.35 m



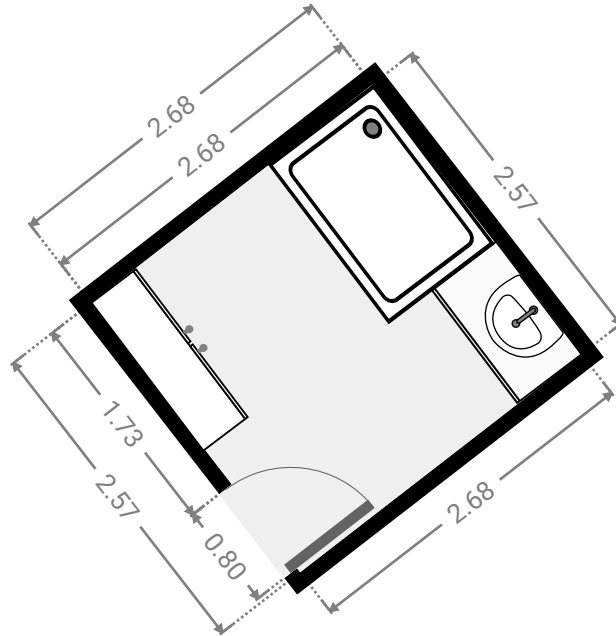
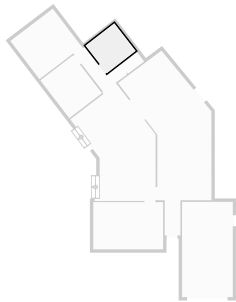
▼ **Toilet**
Ground Floor

WIDTH: 1.48 m • LENGTH: 0.88 m
AREA: 1.30 m² • PERIMETER: 4.72 m



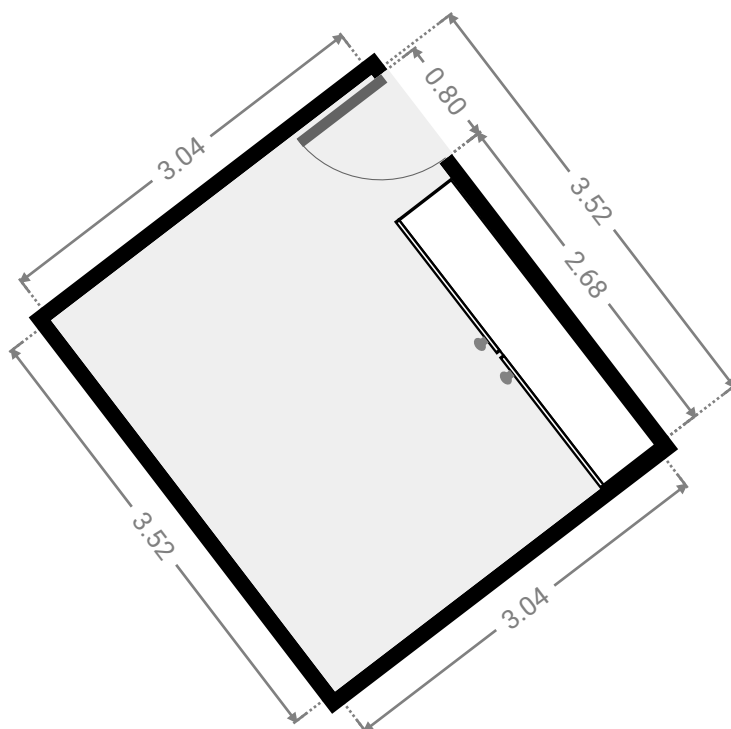
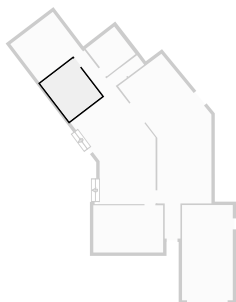
▼ **Bathroom**
Ground Floor

WIDTH: 2.68 m • LENGTH: 2.57 m
AREA: 6.88 m² • PERIMETER: 10.50 m



▼ **Bedroom**
Ground Floor

WIDTH: 3.04 m • LENGTH: 3.52 m
AREA: 10.70 m² • PERIMETER: 13.12 m



▼ Primary Bedroom Ground Floor

WIDTH: 3.94 m • LENGTH: 3.55 m
AREA: 13.99 m² • PERIMETER: 14.98 m

