

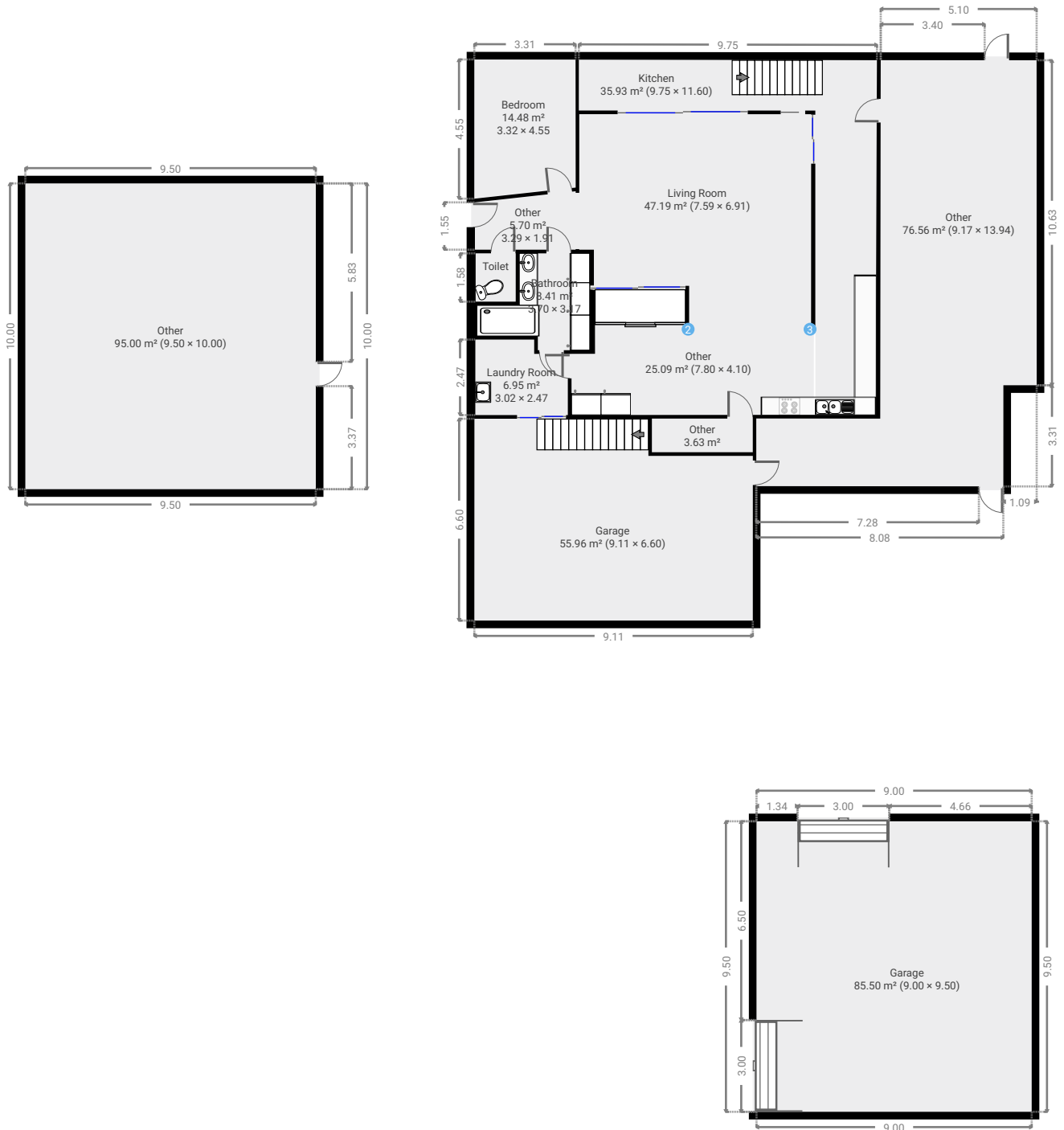
339 Six Mile Road

SUBMITTED BY
Ray White Rockhampton Casey
stockers@cqoz.com

CREATED ON
2022-09-26

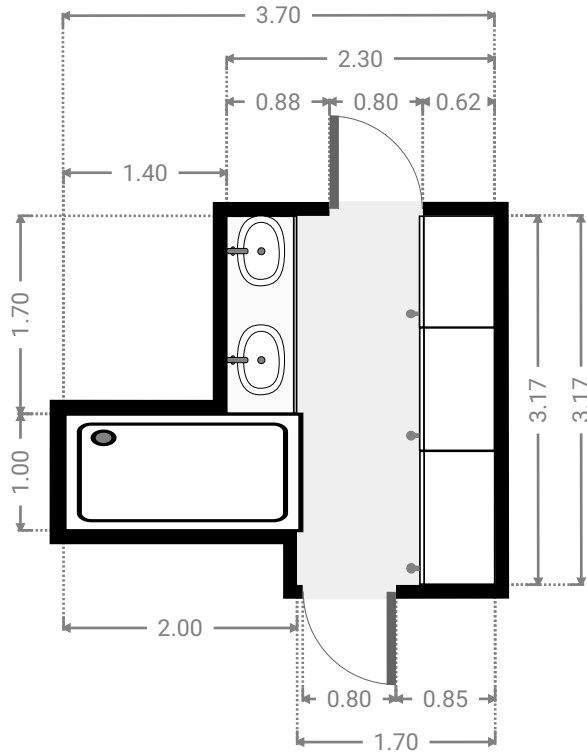
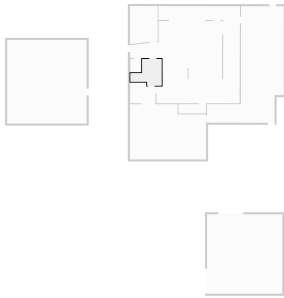
Floors
2

▼ Ground Floor



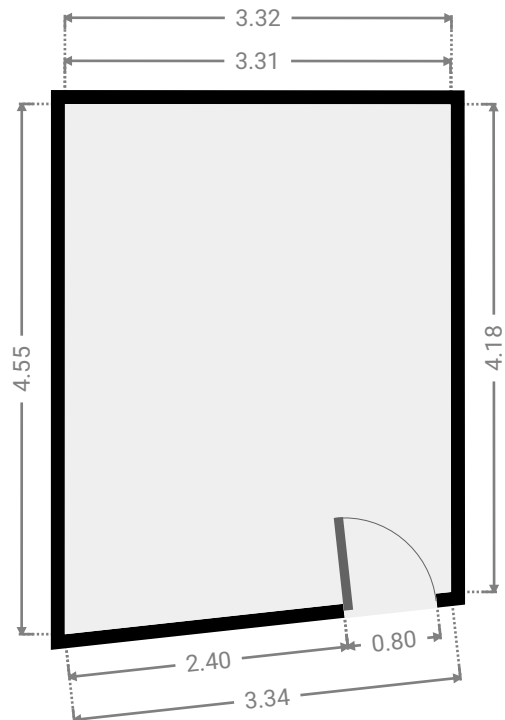
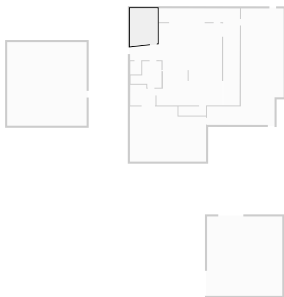
▼ **Bathroom**
Ground Floor

WIDTH: 3.70 m • LENGTH: 3.17 m
AREA: 8.41 m² • PERIMETER: 13.74 m



▼ **Bedroom**
Ground Floor

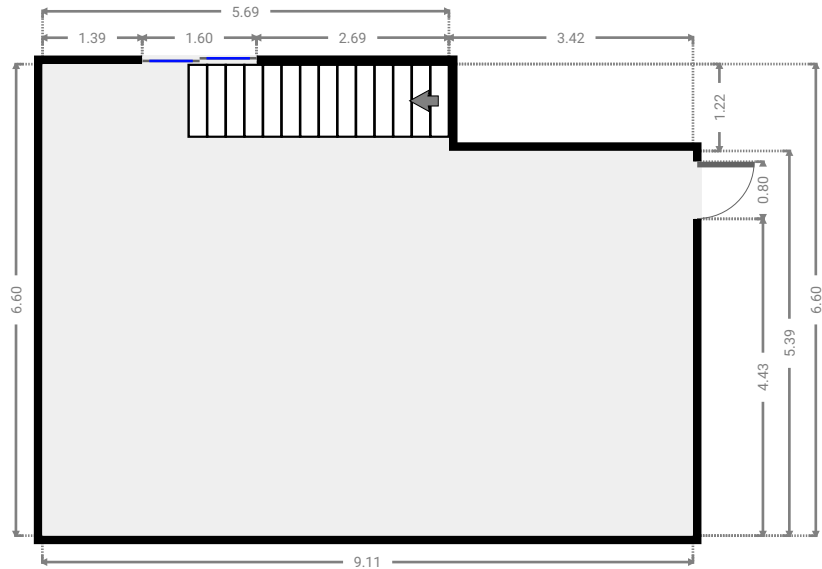
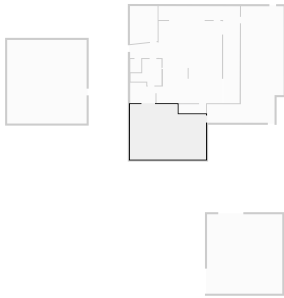
WIDTH: 3.32 m • LENGTH: 4.55 m
AREA: 14.48 m² • PERIMETER: 15.38 m



FLOORS: 2

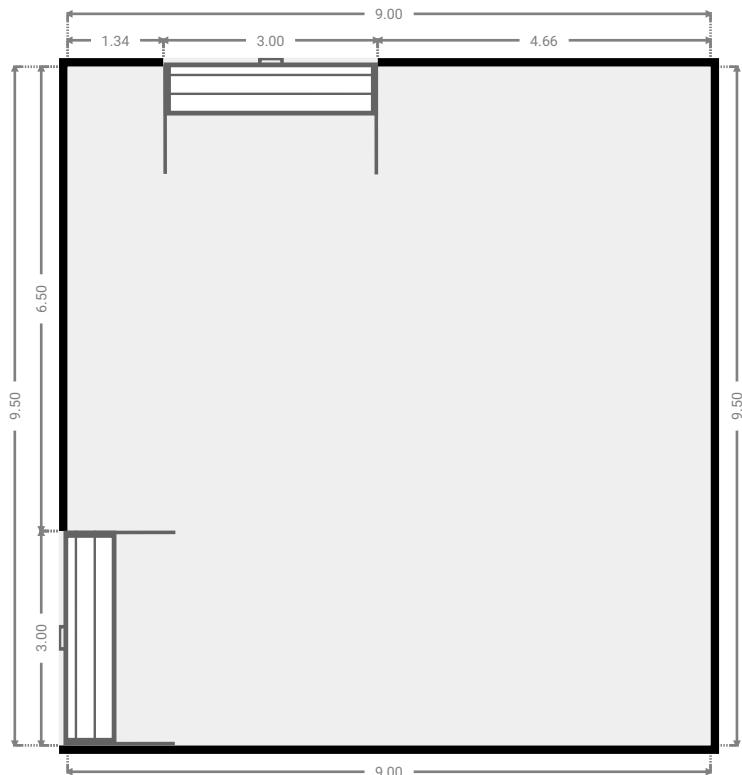
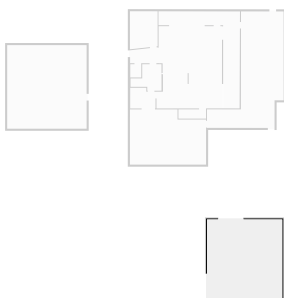
▼ **Garage**
Ground Floor

WIDTH: 9.11 m • LENGTH: 6.60 m
AREA: 55.96 m² • PERIMETER: 31.41 m



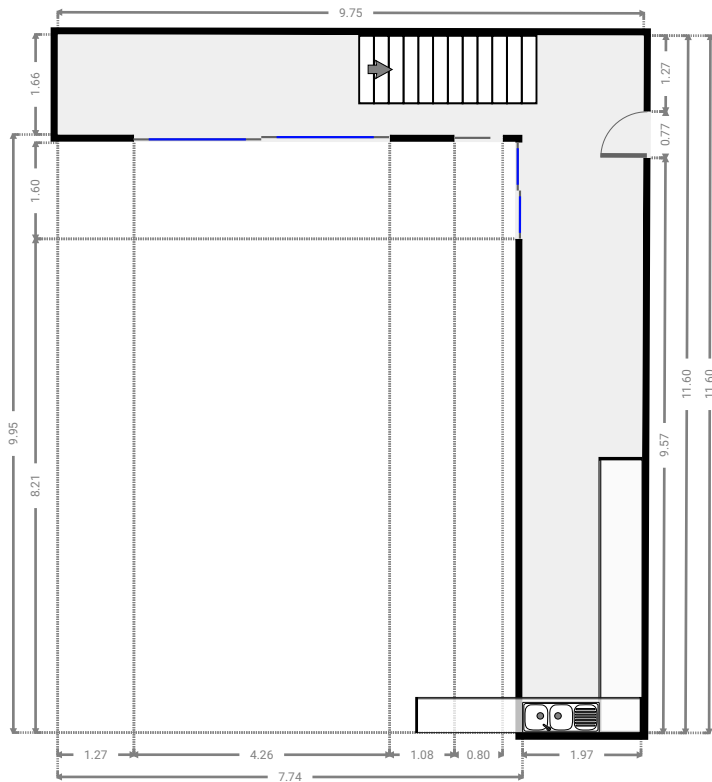
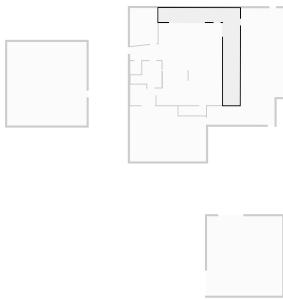
▼ **Garage**
Ground Floor

WIDTH: 9.00 m • LENGTH: 9.50 m
AREA: 85.50 m² • PERIMETER: 37.00 m



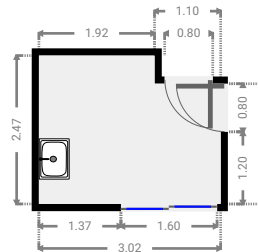
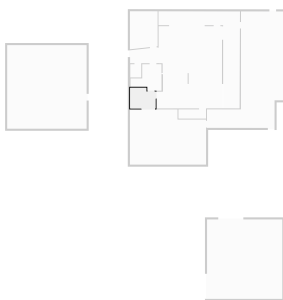
▼ Kitchen
Ground Floor

WIDTH: 9.75 m • LENGTH: 11.60 m
AREA: 35.93 m² • PERIMETER: 42.67 m



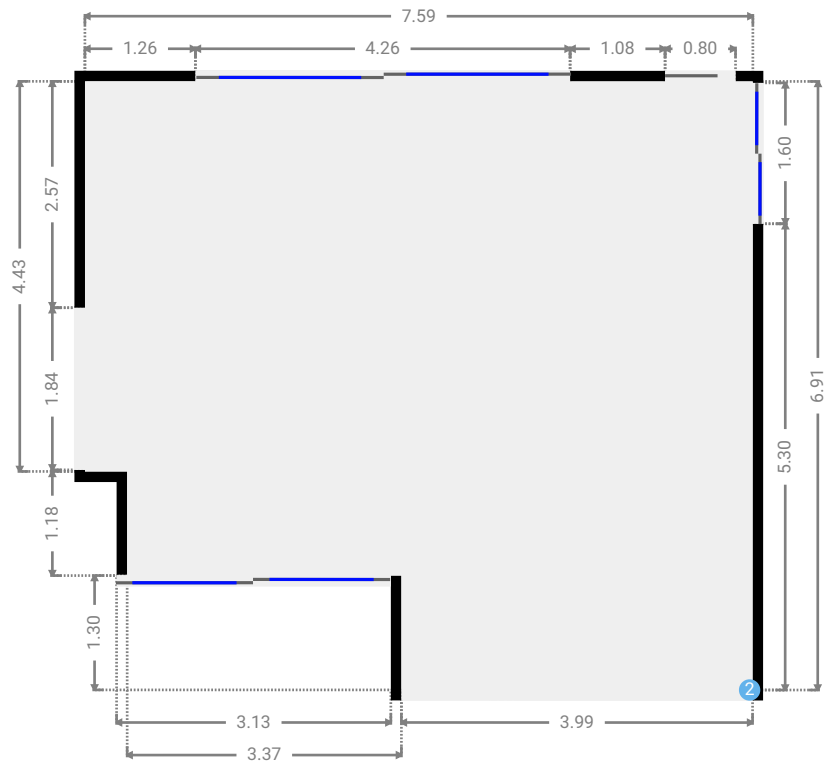
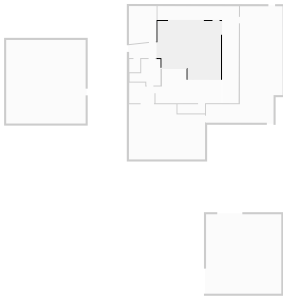
▼ Laundry Room
Ground Floor

WIDTH: 3.02 m • LENGTH: 2.47 m
AREA: 6.95 m² • PERIMETER: 10.99 m



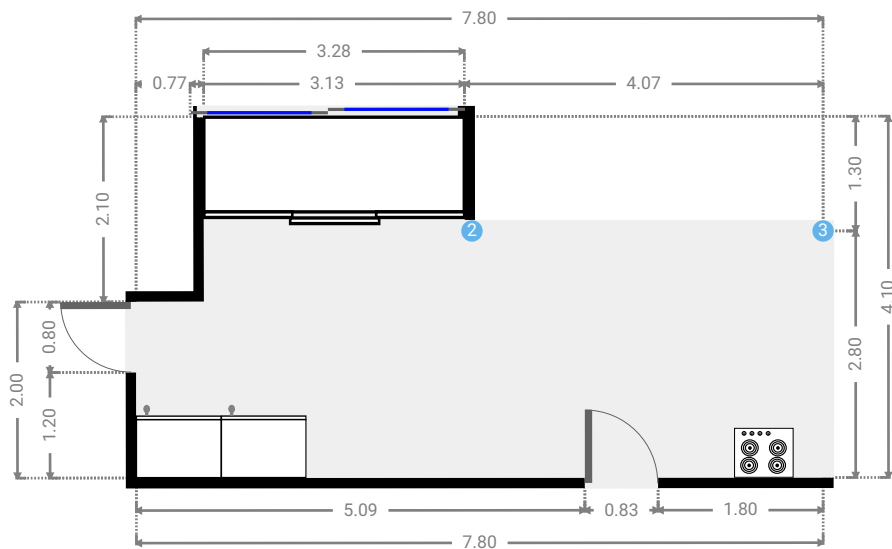
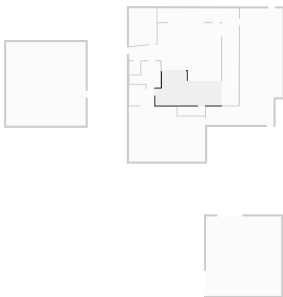
▼ Living Room
Ground Floor

WIDTH: 7.59 m • LENGTH: 6.91 m
AREA: 47.19 m² • PERIMETER: 28.99 m



▼ Other
Ground Floor

WIDTH: 7.80 m • LENGTH: 4.10 m
AREA: 25.09 m² • PERIMETER: 23.81 m



▼ **Other/Ground Floor**

2 OPENING

Height
0.00 m



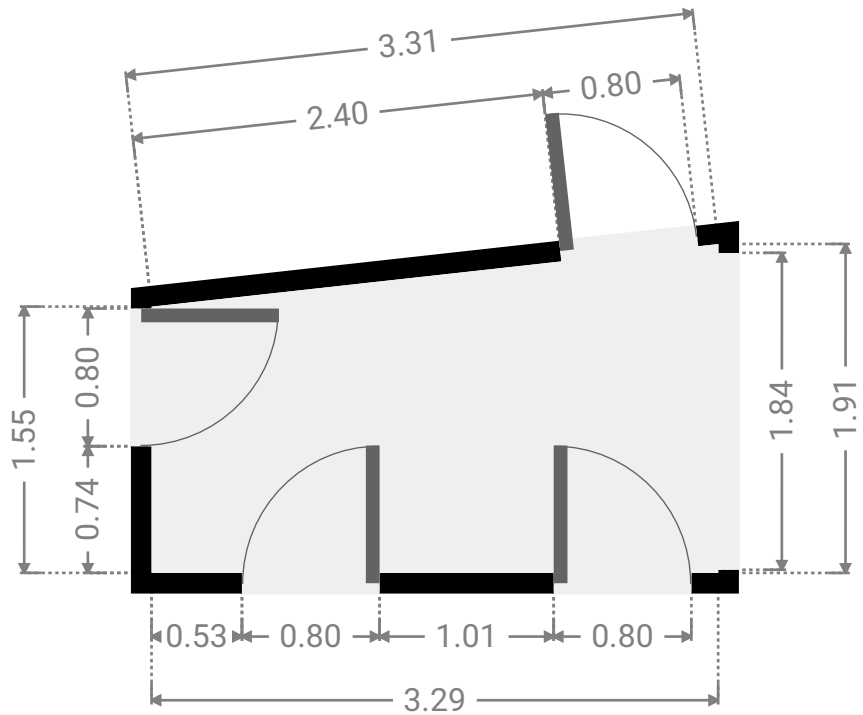
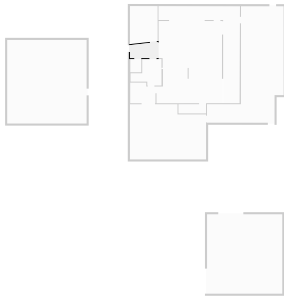
3 OPENING

Height
0.00 m



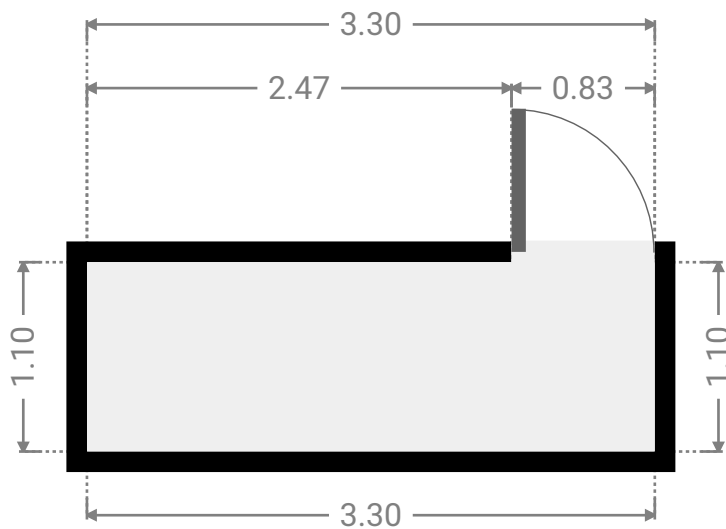
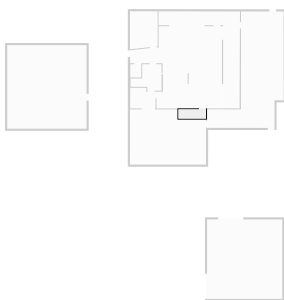
▼ Other
Ground Floor

WIDTH: 3.29 m • LENGTH: 1.91 m
AREA: 5.70 m² • PERIMETER: 10.07 m



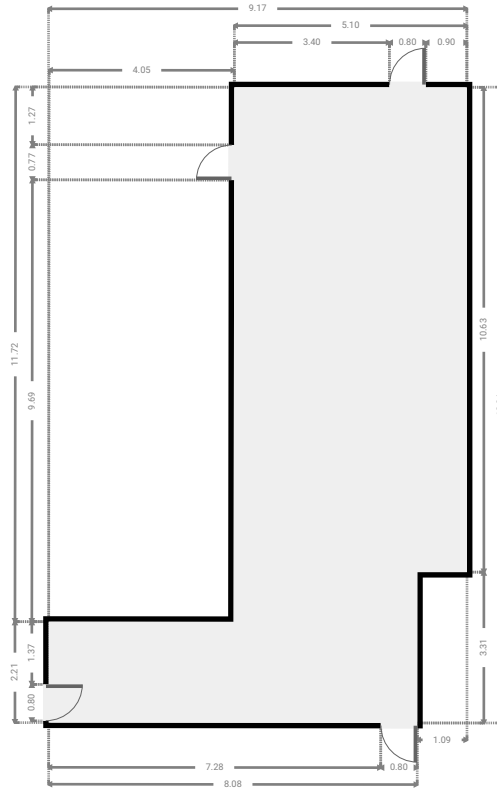
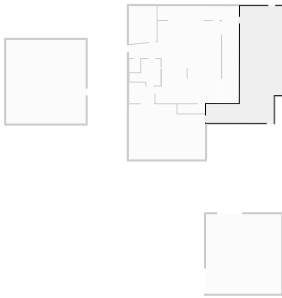
▼ Other
Ground Floor

WIDTH: 3.30 m • LENGTH: 1.10 m
AREA: 3.63 m² • PERIMETER: 8.80 m



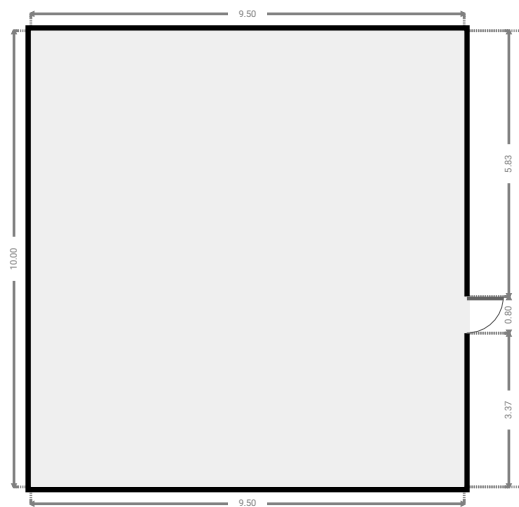
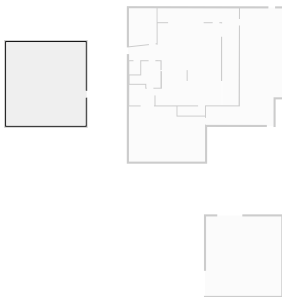
▼ Other
Ground Floor

WIDTH: 9.17 m • LENGTH: 13.94 m
AREA: 76.56 m² • PERIMETER: 46.19 m



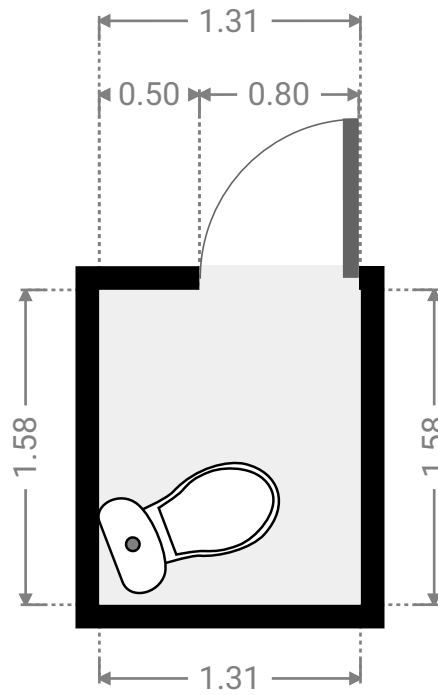
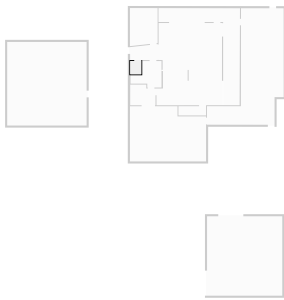
▼ Other
Ground Floor

WIDTH: 9.50 m • LENGTH: 10.00 m
AREA: 95.00 m² • PERIMETER: 39.00 m

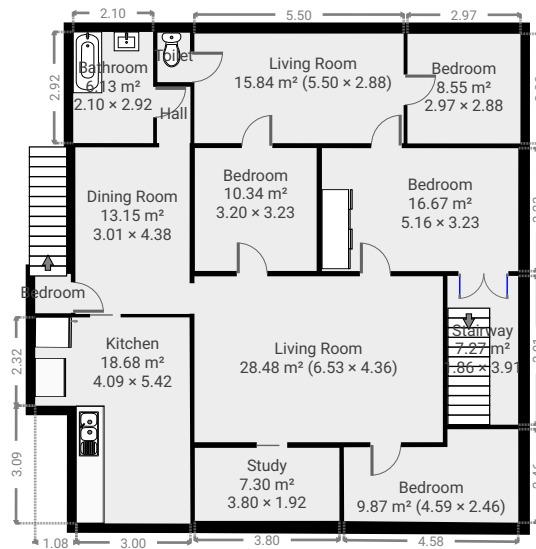


▼ Toilet
Ground Floor

WIDTH: 1.31 m • LENGTH: 1.58 m
AREA: 2.07 m² • PERIMETER: 5.78 m

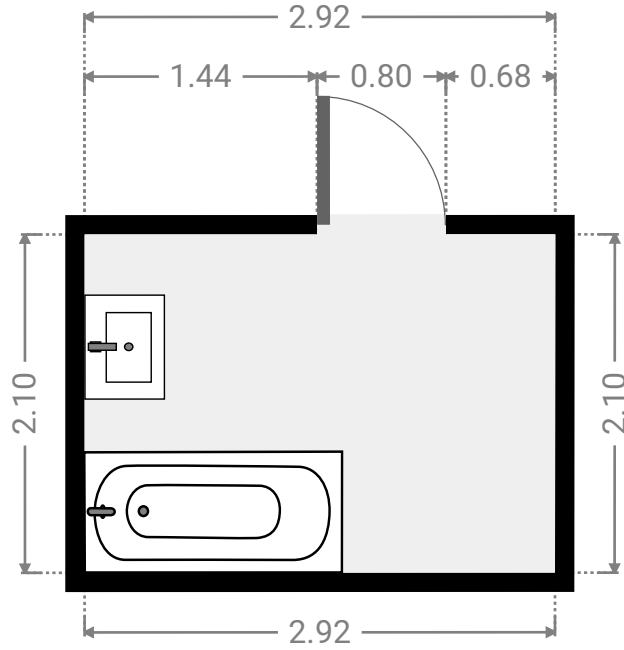
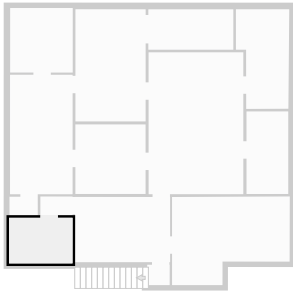


▼ 1st Floor



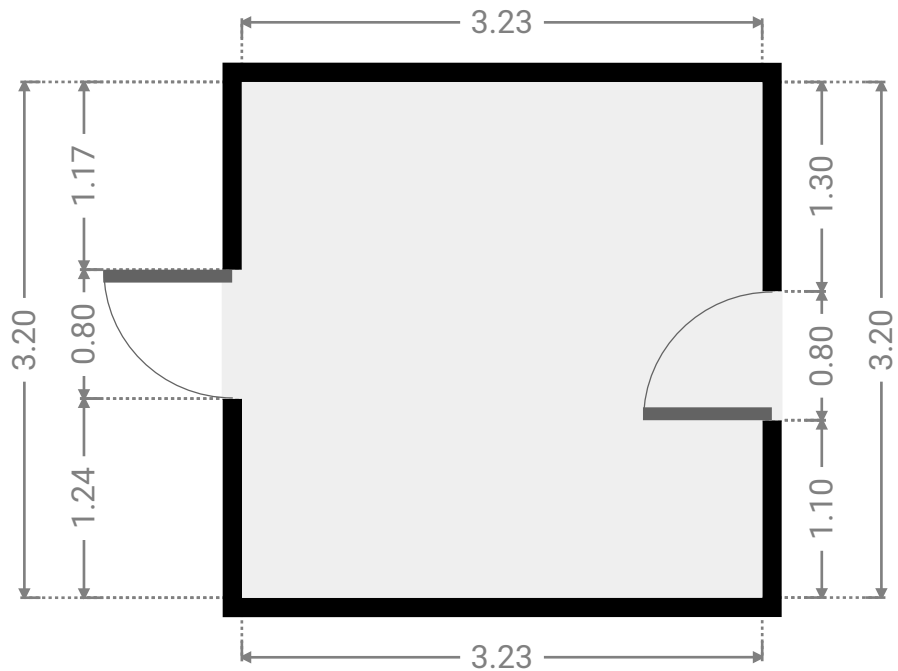
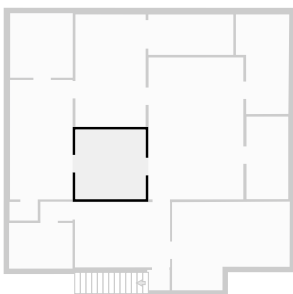
▼ **Bathroom**
1st Floor

WIDTH: 2.92 m • LENGTH: 2.10 m
AREA: 6.13 m² • PERIMETER: 10.04 m



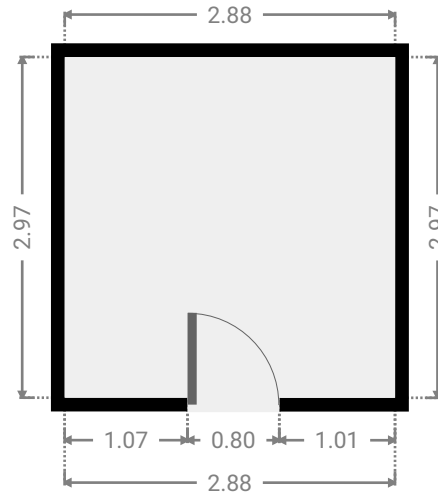
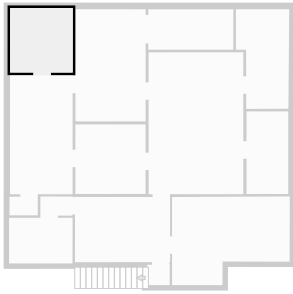
▼ **Bedroom**
1st Floor

WIDTH: 3.23 m • LENGTH: 3.20 m
AREA: 10.34 m² • PERIMETER: 12.86 m



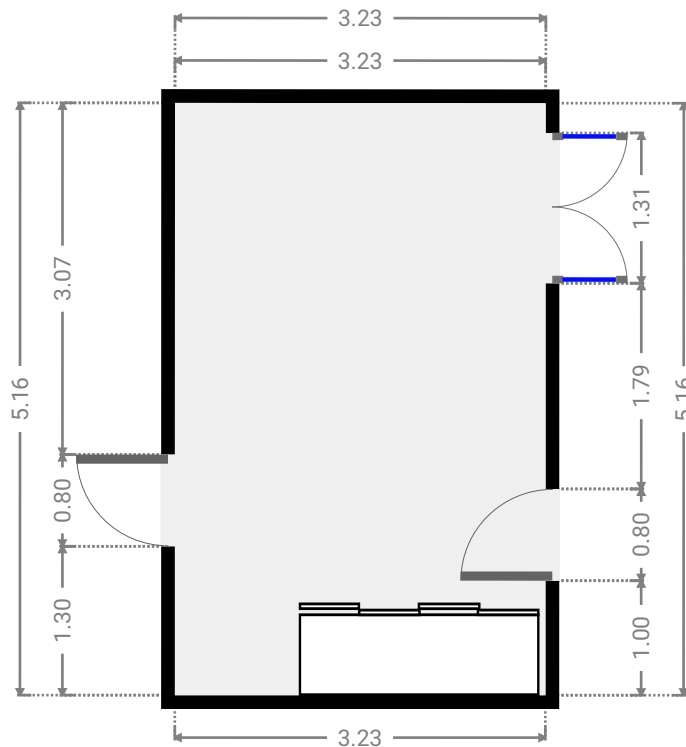
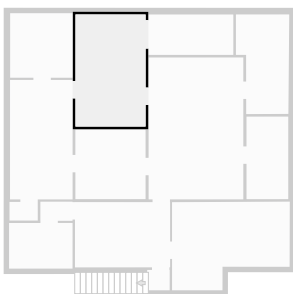
▼ Bedroom
1st Floor

WIDTH: 2.88 m • LENGTH: 2.97 m
AREA: 8.55 m² • PERIMETER: 11.70 m



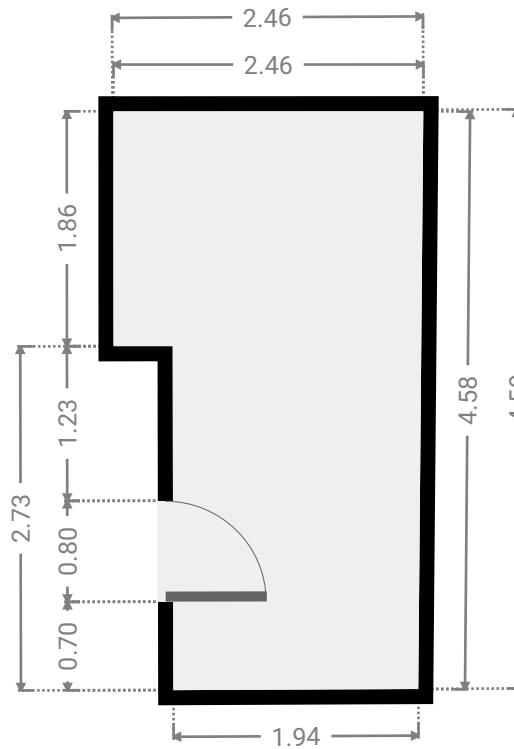
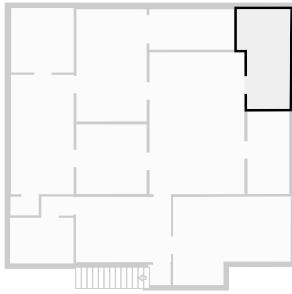
▼ Bedroom
1st Floor

WIDTH: 3.23 m • LENGTH: 5.16 m
AREA: 16.67 m² • PERIMETER: 16.78 m



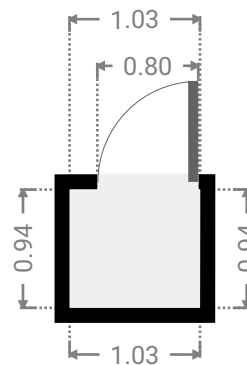
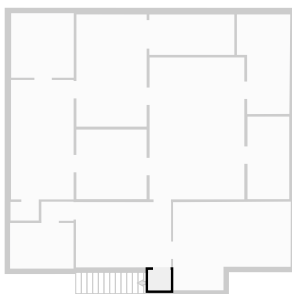
▼ **Bedroom**
1st Floor

WIDTH: 2.46 m • LENGTH: 4.59 m
AREA: 9.87 m² • PERIMETER: 14.03 m



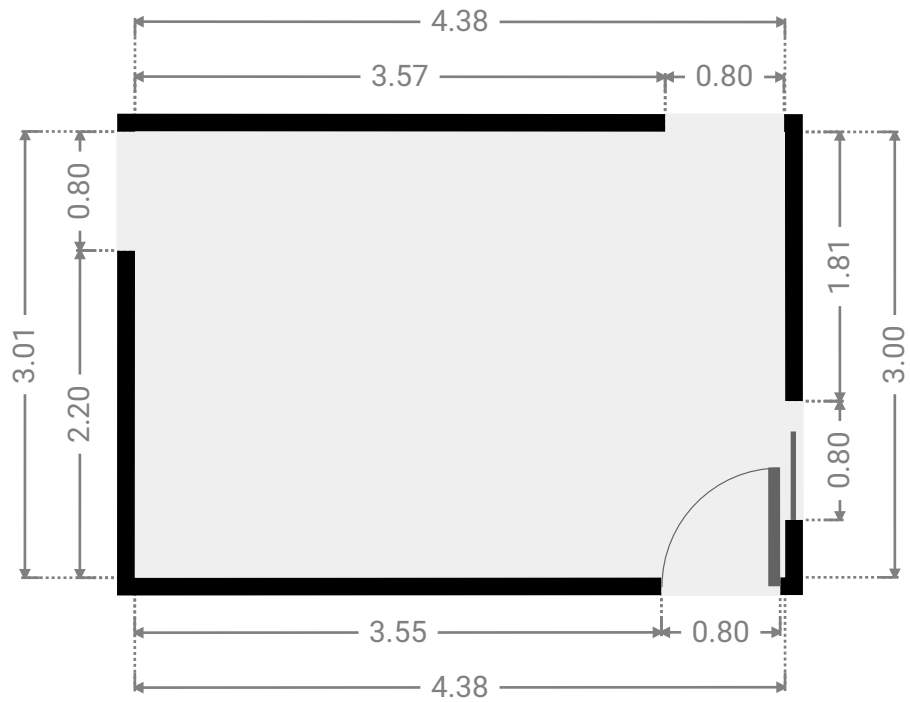
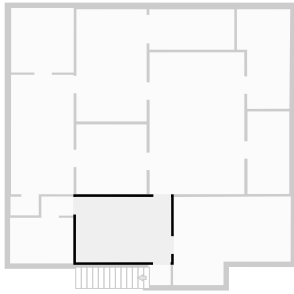
▼ **Bedroom**
1st Floor

WIDTH: 1.03 m • LENGTH: 0.94 m
AREA: 0.97 m² • PERIMETER: 3.94 m



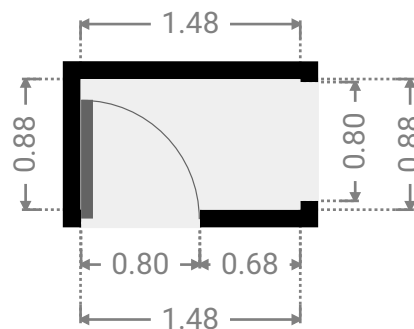
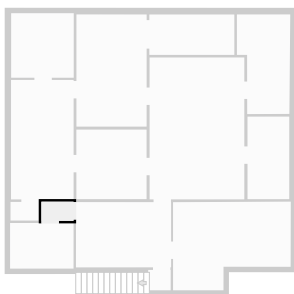
▼ Dining Room
1st Floor

WIDTH: 4.38 m • LENGTH: 3.01 m
AREA: 13.15 m² • PERIMETER: 14.76 m



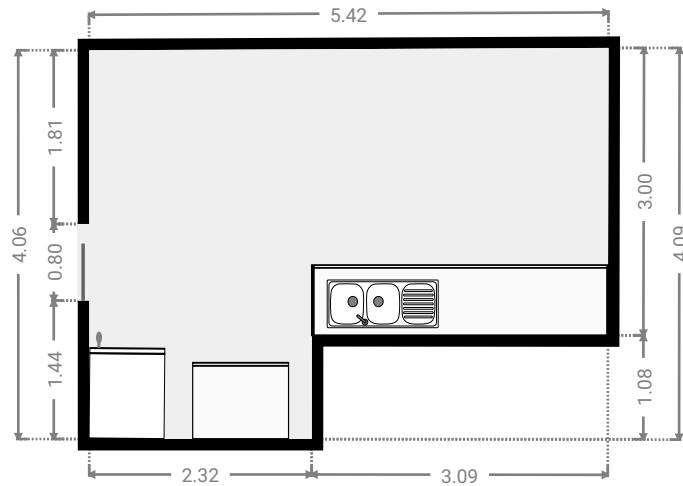
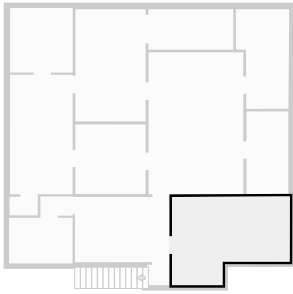
▼ Hall
1st Floor

WIDTH: 1.48 m • LENGTH: 0.88 m
AREA: 1.30 m² • PERIMETER: 4.72 m



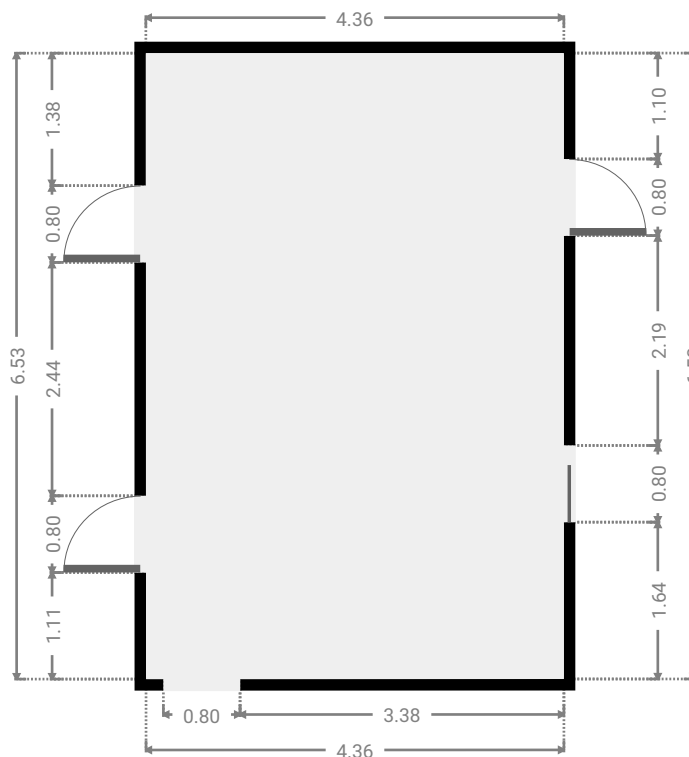
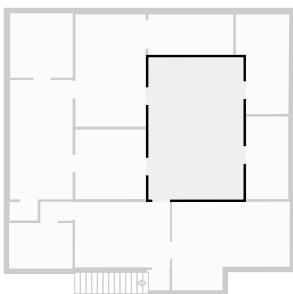
▼ **Kitchen**
1st Floor

WIDTH: 5.42 m • LENGTH: 4.09 m
AREA: 18.68 m² • PERIMETER: 18.97 m



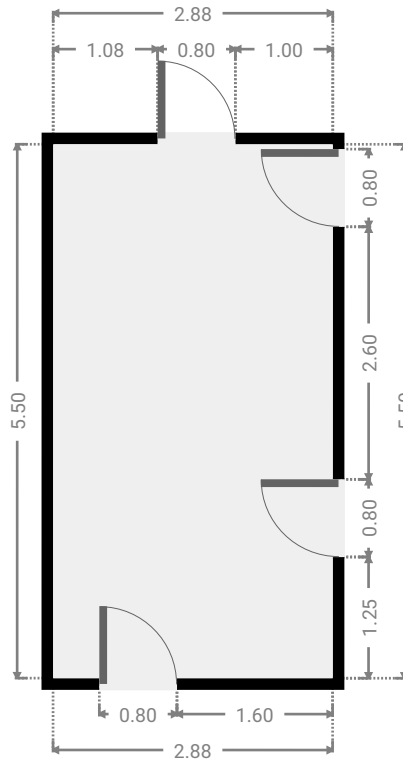
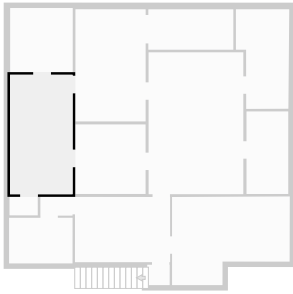
▼ **Living Room**
1st Floor

WIDTH: 4.36 m • LENGTH: 6.53 m
AREA: 28.48 m² • PERIMETER: 21.78 m



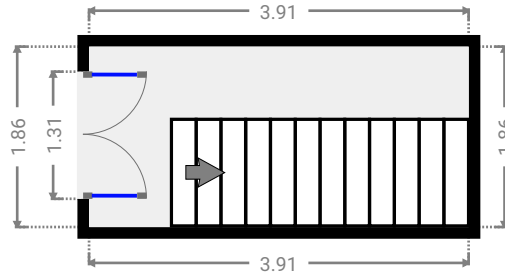
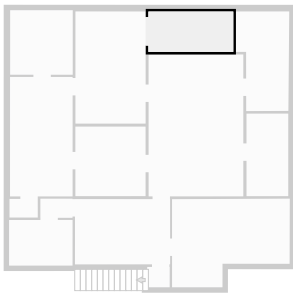
▼ Living Room
1st Floor

WIDTH: 2.88 m • LENGTH: 5.50 m
AREA: 15.84 m² • PERIMETER: 16.76 m



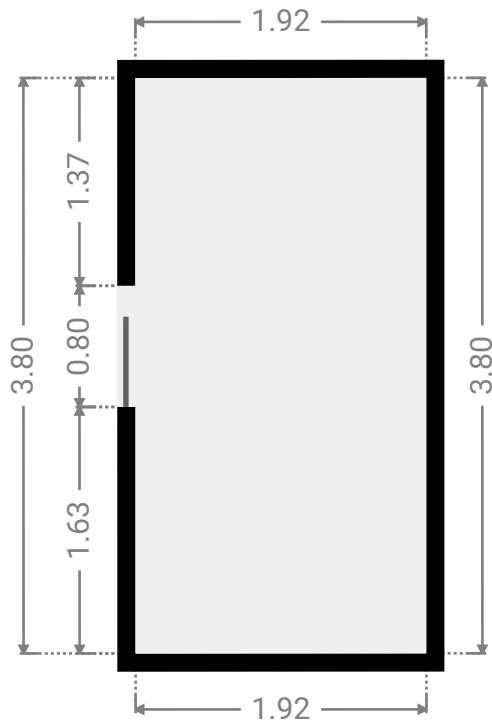
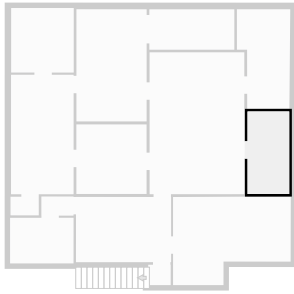
▼ Stairway
1st Floor

WIDTH: 3.91 m • LENGTH: 1.86 m
AREA: 7.27 m² • PERIMETER: 11.54 m



▼ **Study**
1st Floor

WIDTH: 1.92 m • LENGTH: 3.80 m
AREA: 7.30 m² • PERIMETER: 11.44 m



▼ **Toilet**
1st Floor

WIDTH: 1.30 m • LENGTH: 0.86 m
AREA: 1.11 m² • PERIMETER: 4.31 m

