

338 Hobler Avenue

Ground Floor



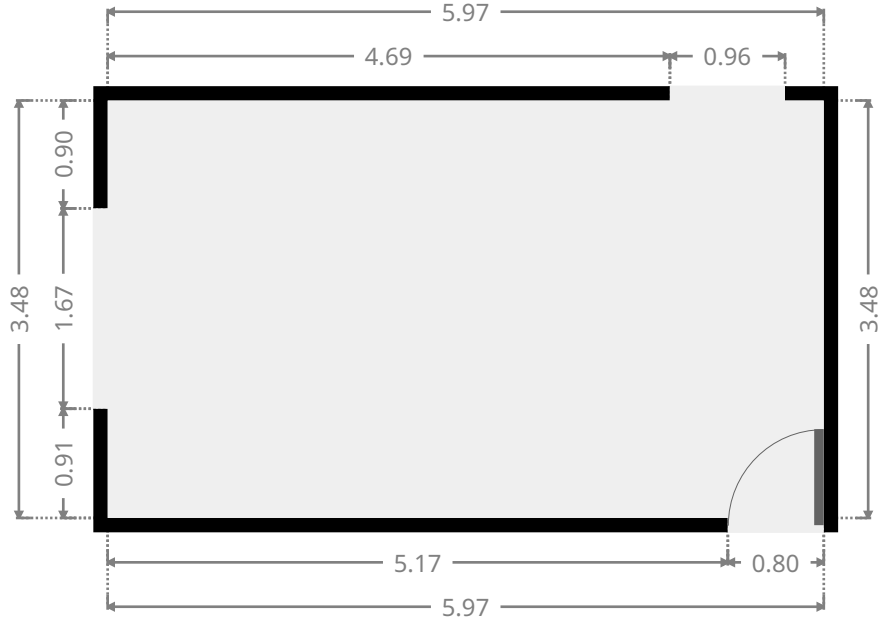
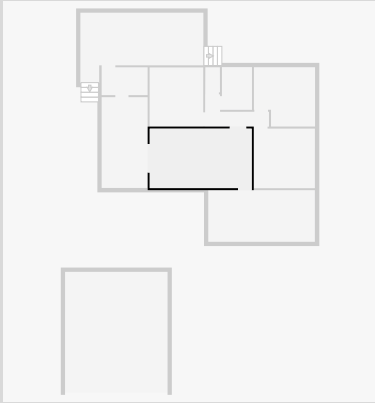
THIS FLOORPLAN IS PROVIDED WITHOUT WARRANTY OF ANY KIND. SENSOPIA DISCLAIMS ANY WARRANTY INCLUDING, WITHOUT LIMITATION, SATISFACTORY QUALITY OR ACCURACY OF DIMENSIONS.



338 Hobler Avenue

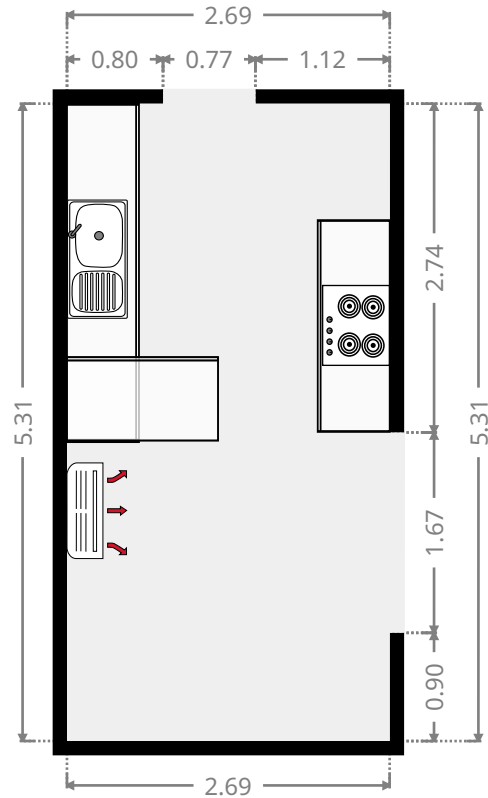
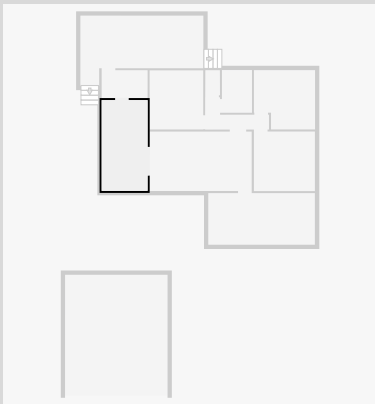
Living Room

Width: 3.48 m
Length: 5.97 m
Area: 20.78 m²
Perimeter: 18.90 m

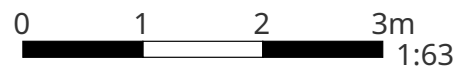


Kitchen

Width: 2.69 m
Length: 5.31 m
Area: 14.29 m²
Perimeter: 16.01 m



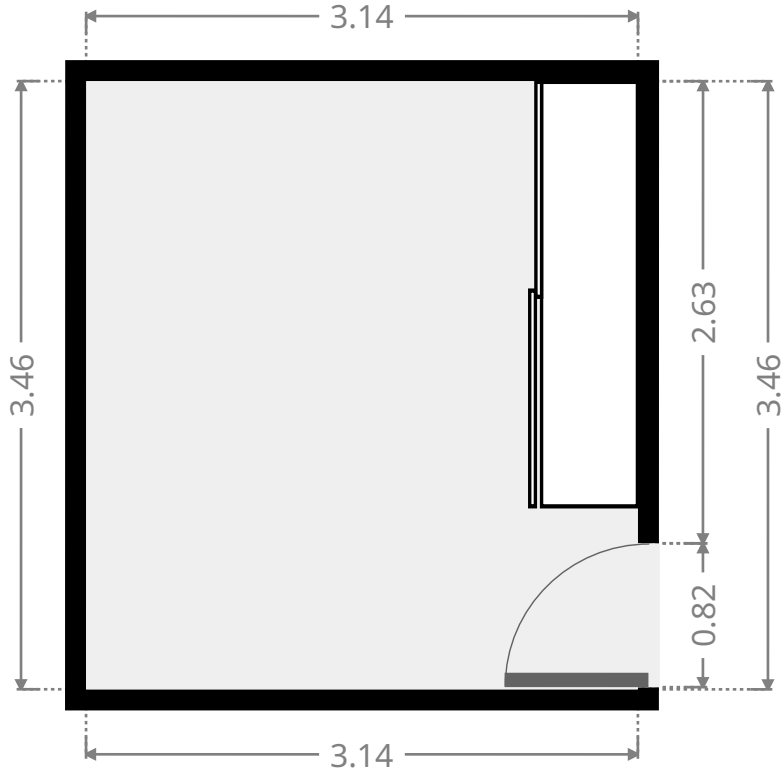
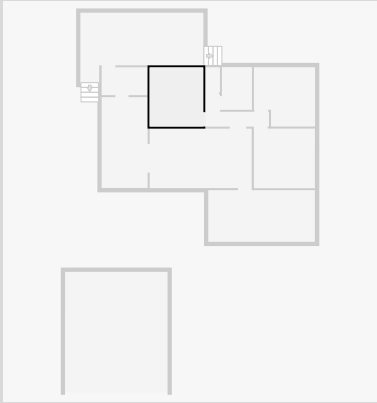
THIS FLOORPLAN IS PROVIDED WITHOUT WARRANTY OF ANY KIND. SENSOPIA DISCLAIMS ANY WARRANTY INCLUDING, WITHOUT LIMITATION, SATISFACTORY QUALITY OR ACCURACY OF DIMENSIONS.



338 Hobler Avenue

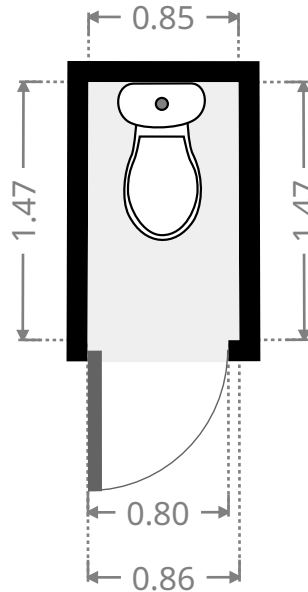
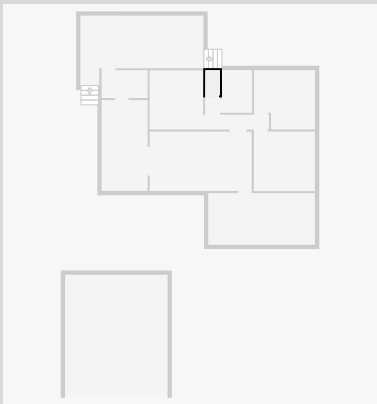
Bedroom

Width: 3.14 m
Length: 3.46 m
Area: 10.86 m²
Perimeter: 13.20 m



Toilet / Half Bath

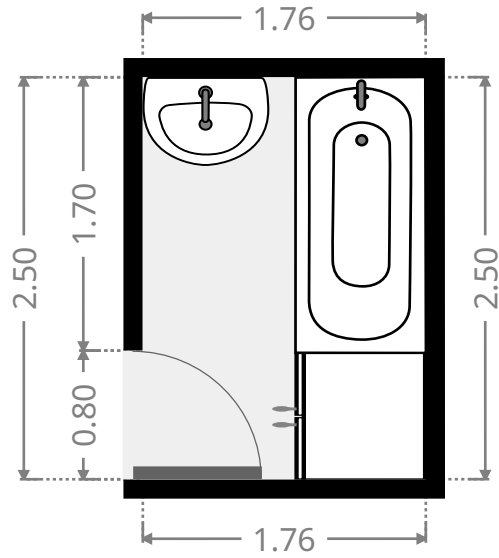
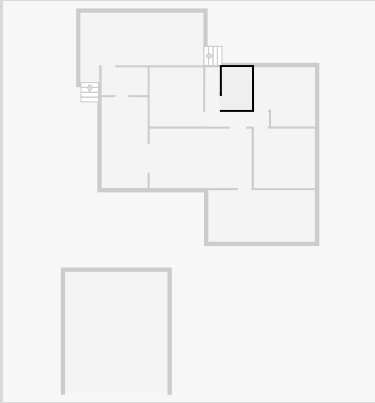
Width: 0.86 m
Length: 1.47 m
Area: 1.26 m²
Perimeter: 4.65 m



338 Hobler Avenue

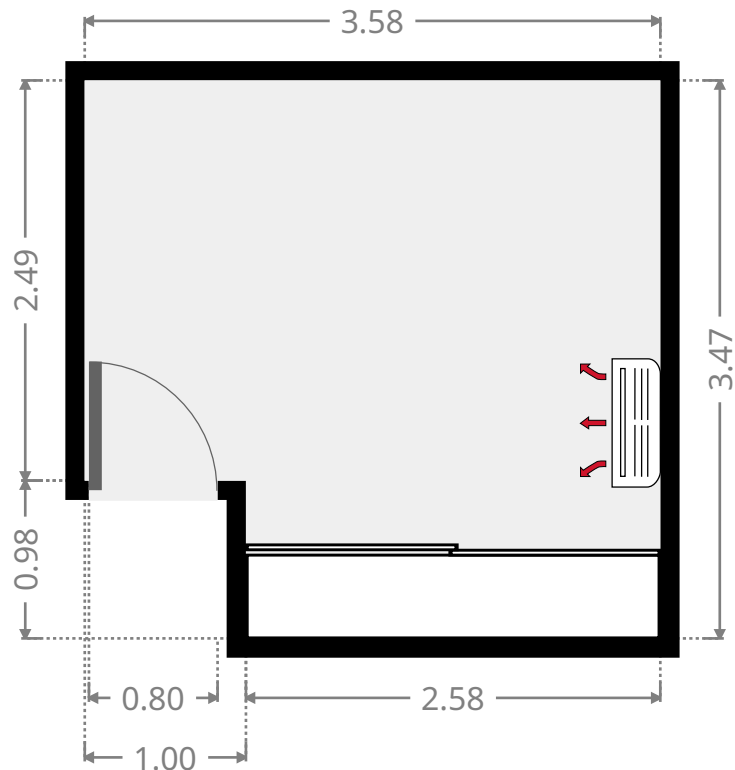
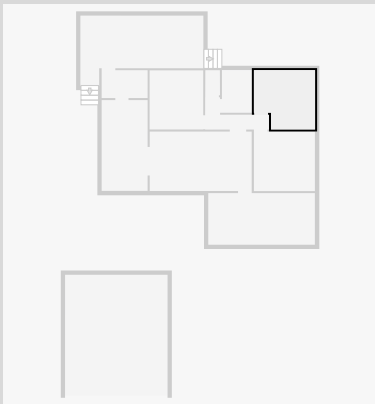
Bathroom

Width: 1.76 m
Length: 2.50 m
Area: 4.40 m²
Perimeter: 8.52 m



Bedroom

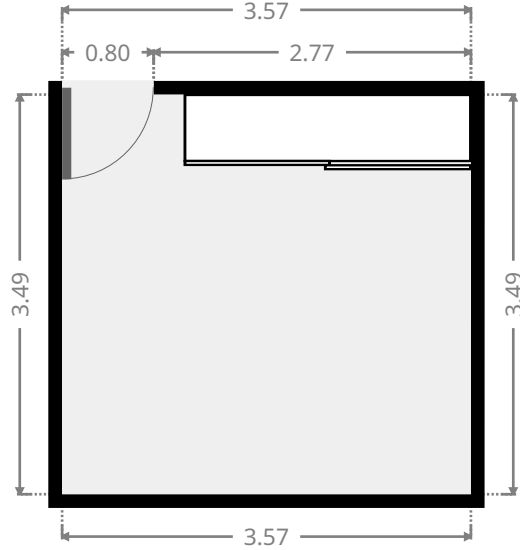
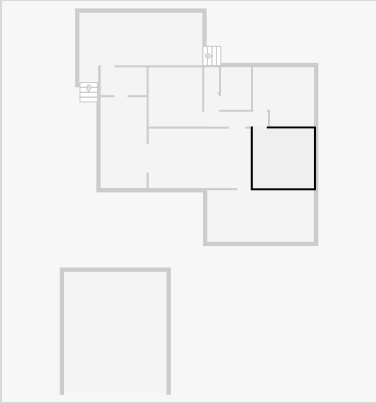
Width: 3.47 m
Length: 3.58 m
Area: 11.44 m²
Perimeter: 14.10 m



338 Hobler Avenue

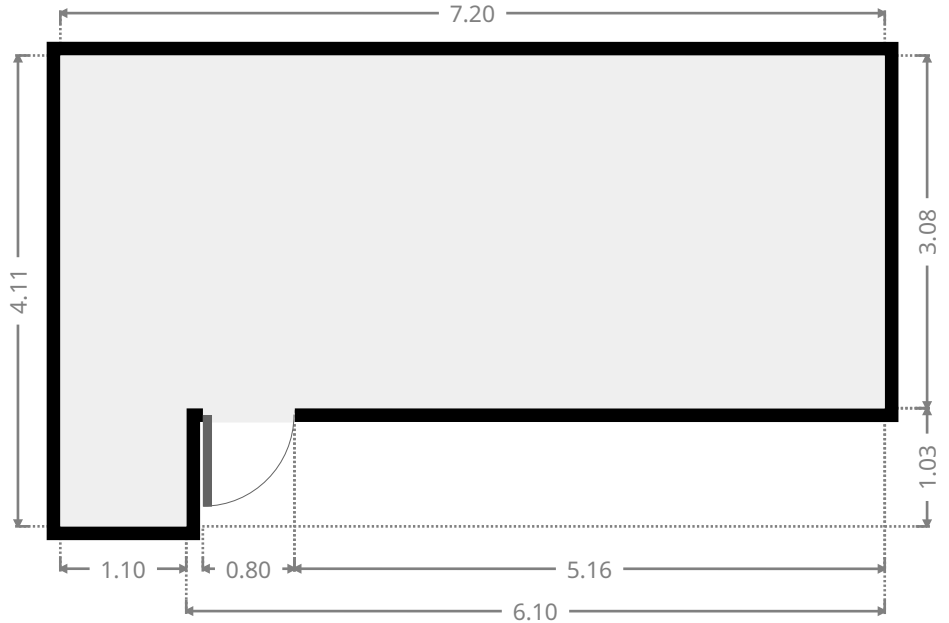
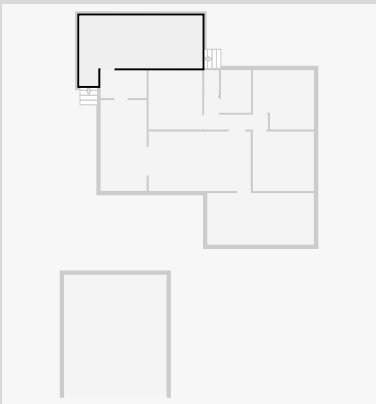
Bedroom

Width: 3.49 m
Length: 3.57 m
Area: 12.46 m²
Perimeter: 14.12 m



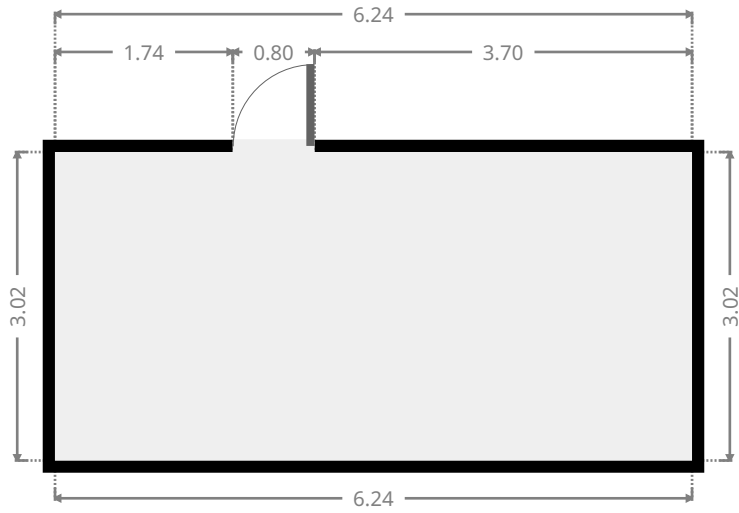
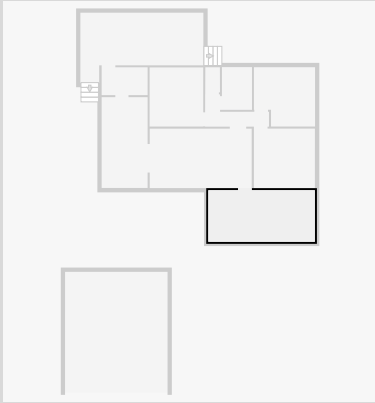
Rear Deck

Width: 4.11 m
Length: 7.20 m
Area: 23.31 m²
Perimeter: 22.62 m



338 Hobler Avenue

•
Width: 3.02 m
Length: 6.24 m
Area: 18.84 m²
Perimeter: 18.52 m



Garage

Width: 6.00 m
Length: 6.95 m
Area: 41.70 m²
Perimeter: 25.90 m

