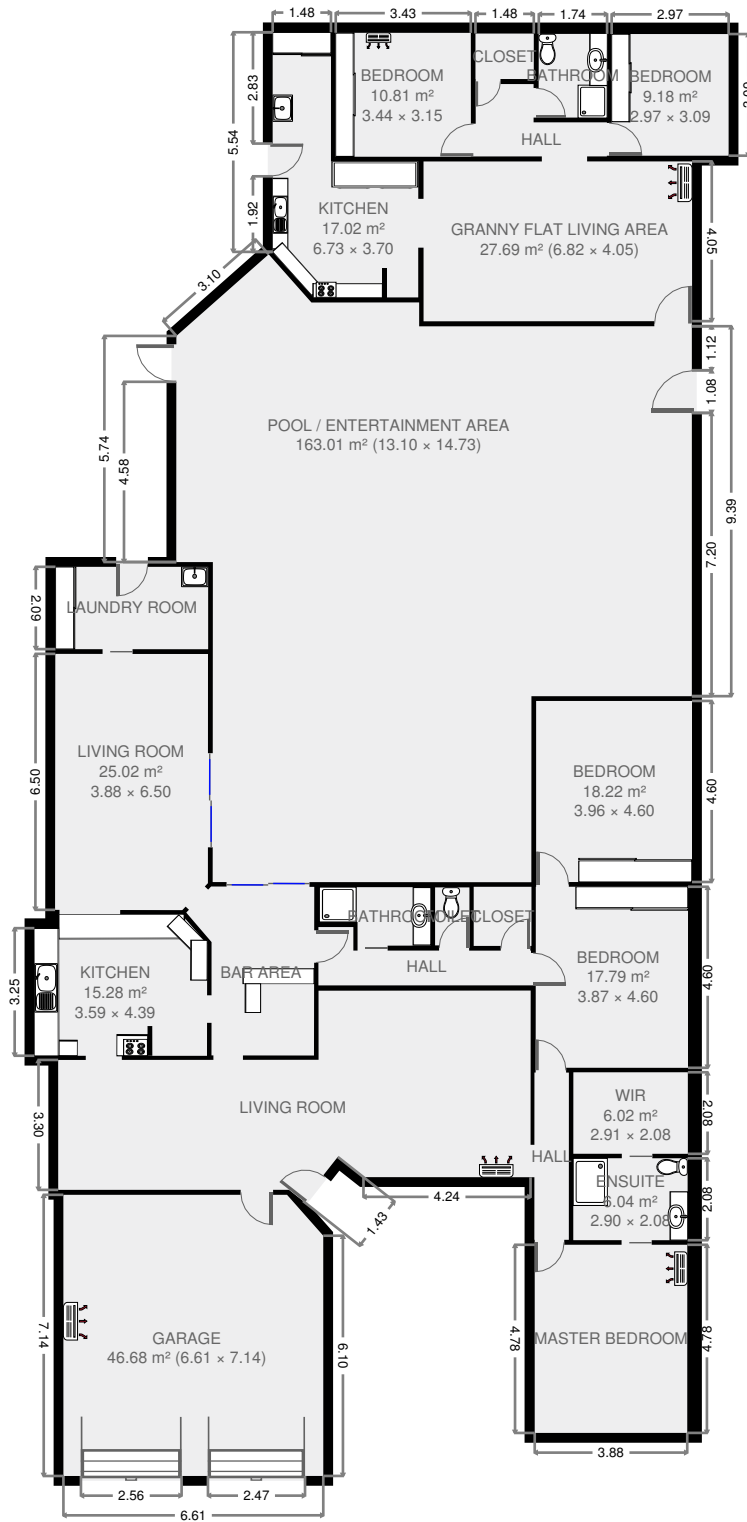


Ground Floor

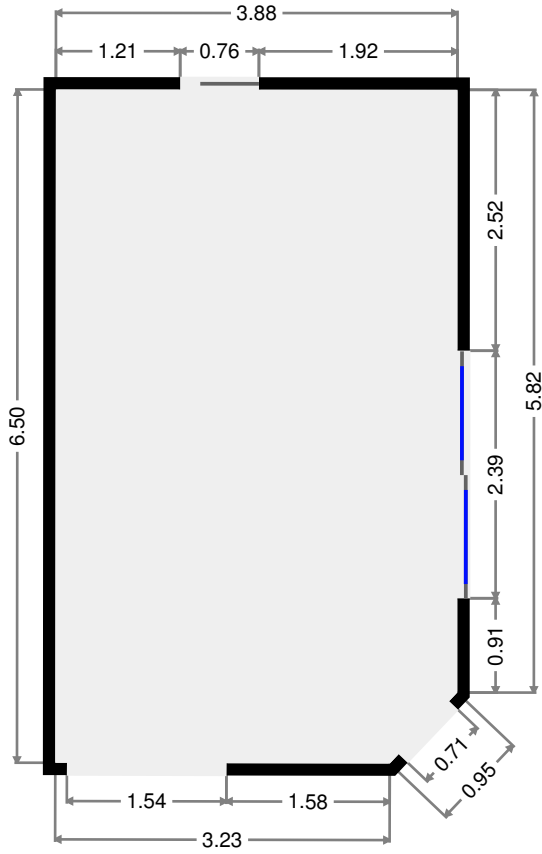
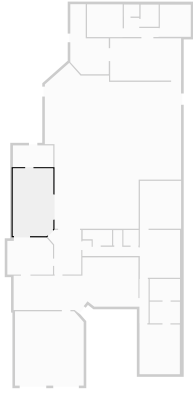


THIS FLOORPLAN IS PROVIDED WITHOUT WARRANTY OF ANY KIND. SENSOPRIA DISCLAIMS ANY WARRANTY INCLUDING, WITHOUT LIMITATION, SATISFACTORY QUALITY OR ACCURACY OF DIMENSIONS.

335 Frenchville Road

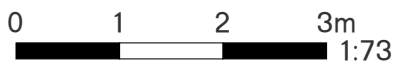
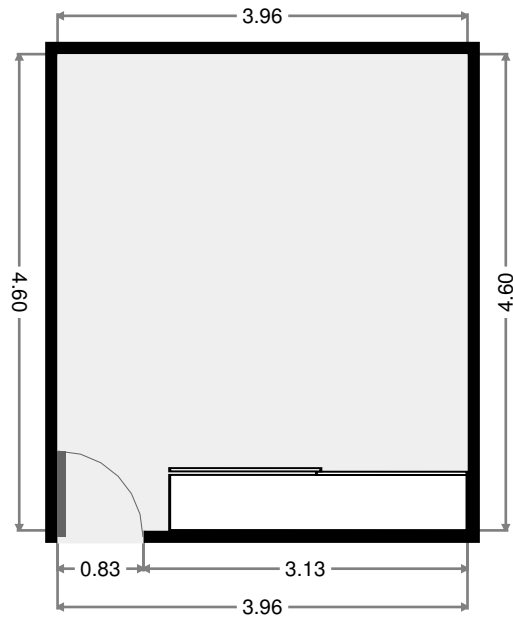
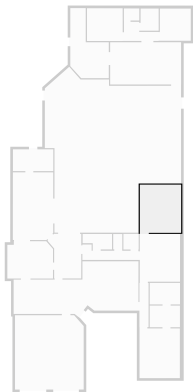
Living Room

Width: 3.88 m
 Length: 6.50 m
 Area: 25.02 m²
 Perimeter: 20.38 m



Bedroom

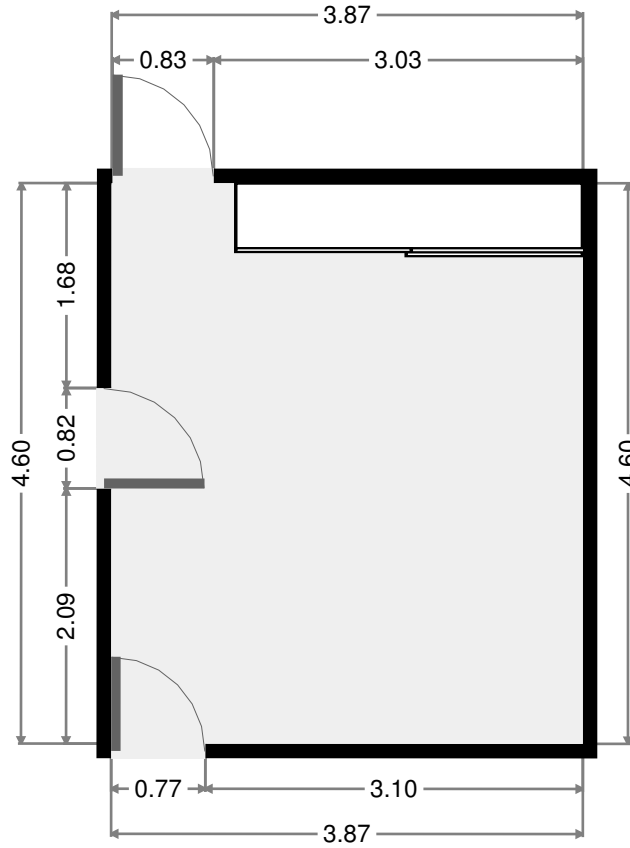
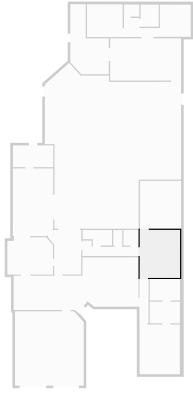
Width: 3.96 m
 Length: 4.60 m
 Area: 18.22 m²
 Perimeter: 17.12 m



THIS FLOORPLAN IS PROVIDED WITHOUT WARRANTY OF ANY KIND. SENSOPIA DISCLAIMS ANY WARRANTY INCLUDING, WITHOUT LIMITATION, SATISFACTORY QUALITY OR ACCURACY OF DIMENSIONS.

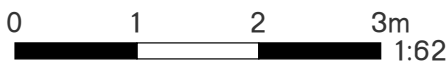
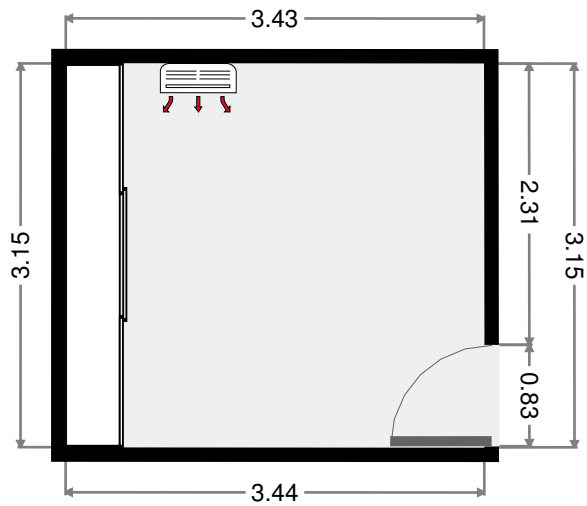
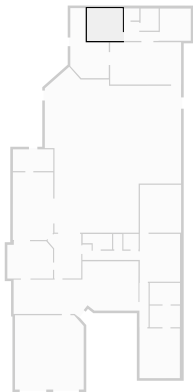
Bedroom

Width: 3.87 m
 Length: 4.60 m
 Area: 17.79 m²
 Perimeter: 16.93 m



Bedroom

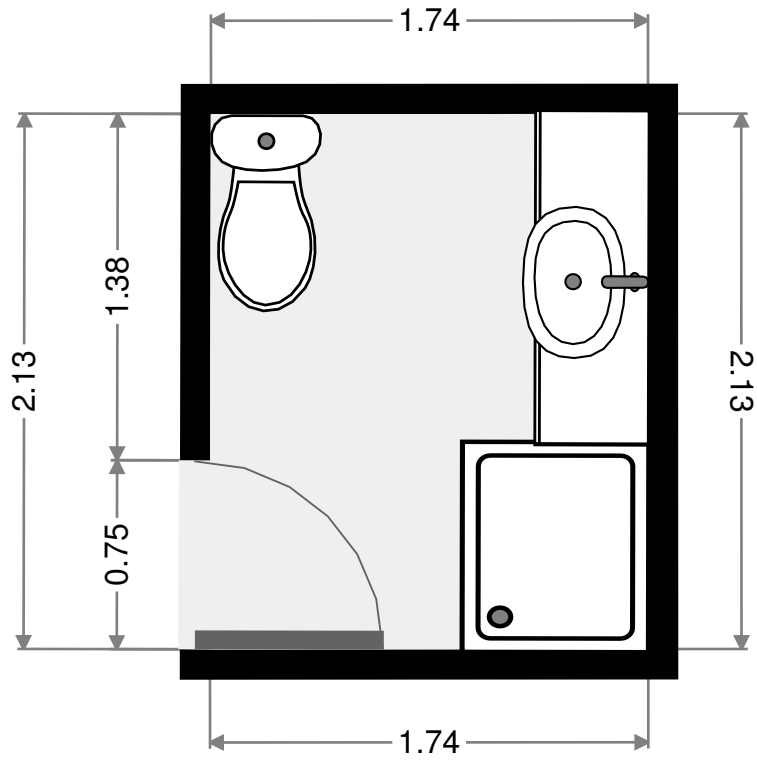
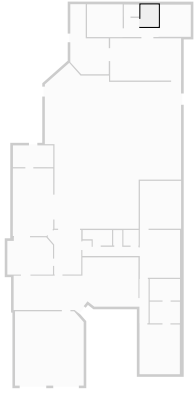
Width: 3.15 m
 Length: 3.44 m
 Area: 10.81 m²
 Perimeter: 13.16 m



THIS FLOORPLAN IS PROVIDED WITHOUT WARRANTY OF ANY KIND. SENSOPIA DISCLAIMS ANY WARRANTY INCLUDING, WITHOUT LIMITATION, SATISFACTORY QUALITY OR ACCURACY OF DIMENSIONS.

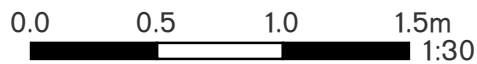
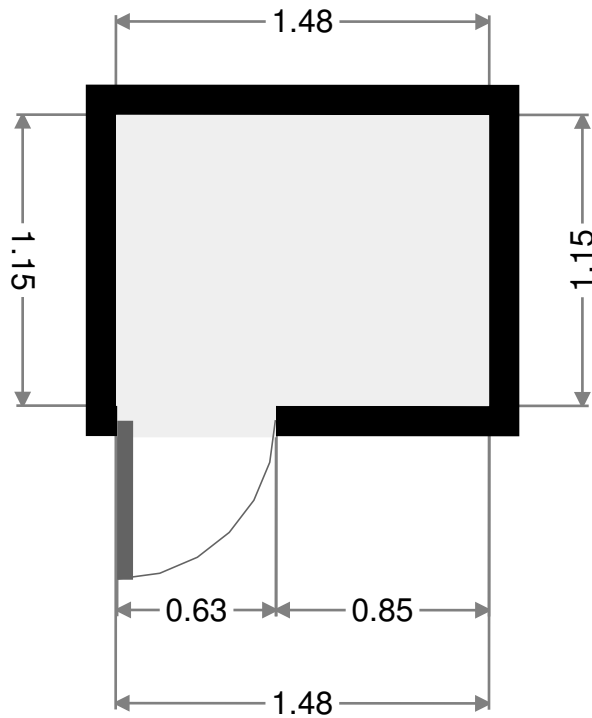
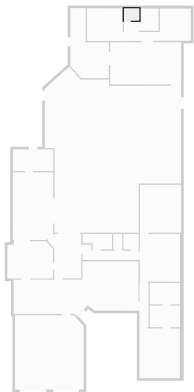
Bathroom

Width: 1.74 m
 Length: 2.13 m
 Area: 3.69 m²
 Perimeter: 7.73 m



Closet

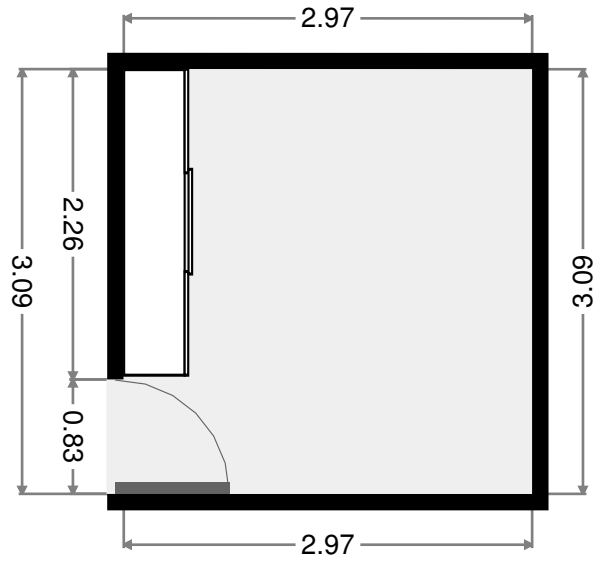
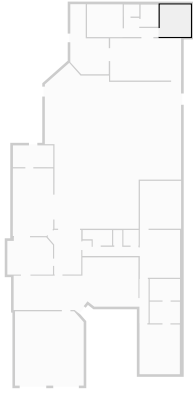
Width: 1.15 m
 Length: 1.48 m
 Area: 1.71 m²
 Perimeter: 5.27 m



THIS FLOORPLAN IS PROVIDED WITHOUT WARRANTY OF ANY KIND. SENSOPIA DISCLAIMS ANY WARRANTY INCLUDING, WITHOUT LIMITATION, SATISFACTORY QUALITY OR ACCURACY OF DIMENSIONS.

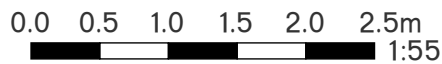
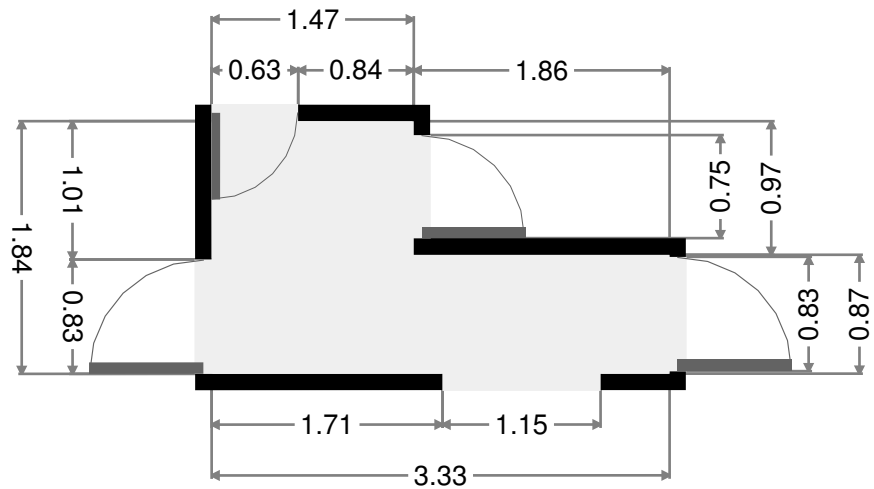
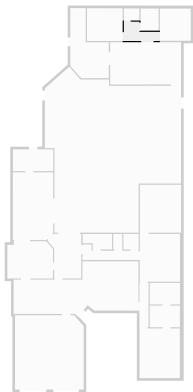
Bedroom

Width: 2.97 m
 Length: 3.09 m
 Area: 9.18 m²
 Perimeter: 12.13 m



Hall

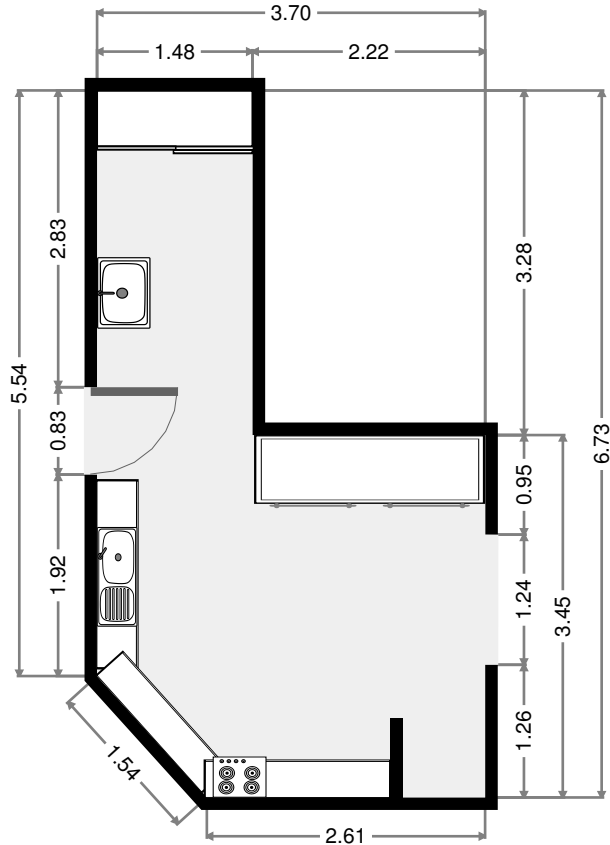
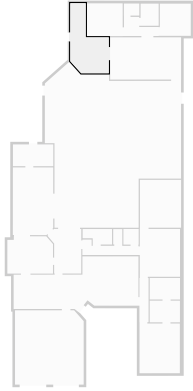
Width: 1.84 m
 Length: 3.33 m
 Area: 4.32 m²
 Perimeter: 10.34 m



THIS FLOORPLAN IS PROVIDED WITHOUT WARRANTY OF ANY KIND. SENSOPIA DISCLAIMS ANY WARRANTY INCLUDING, WITHOUT LIMITATION, SATISFACTORY QUALITY OR ACCURACY OF DIMENSIONS.

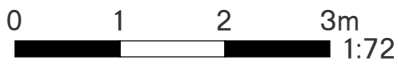
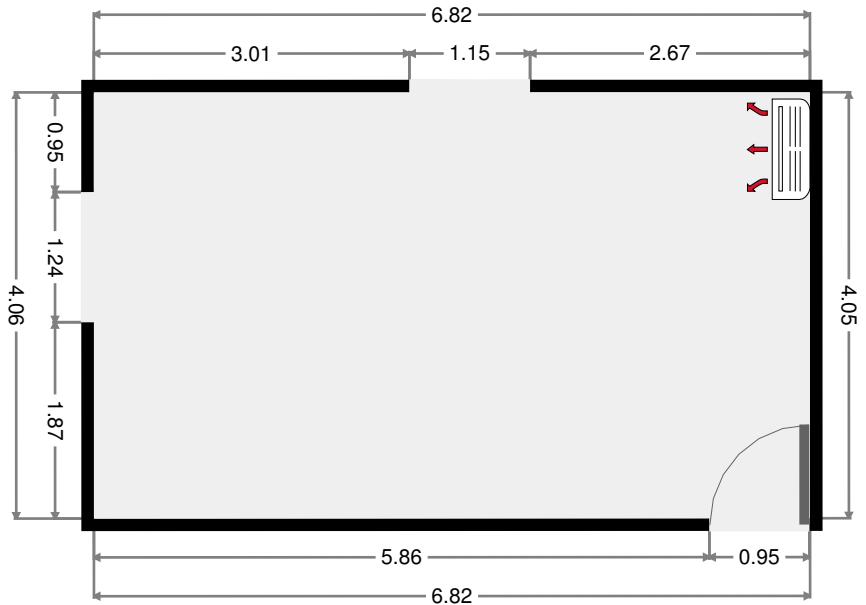
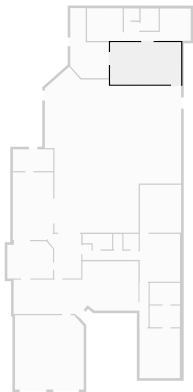
Kitchen

Width: 3.70 m
 Length: 6.73 m
 Area: 17.02 m²
 Perimeter: 20.22 m
 Ceiling Height: 2.17 m



Granny Flat Living Area

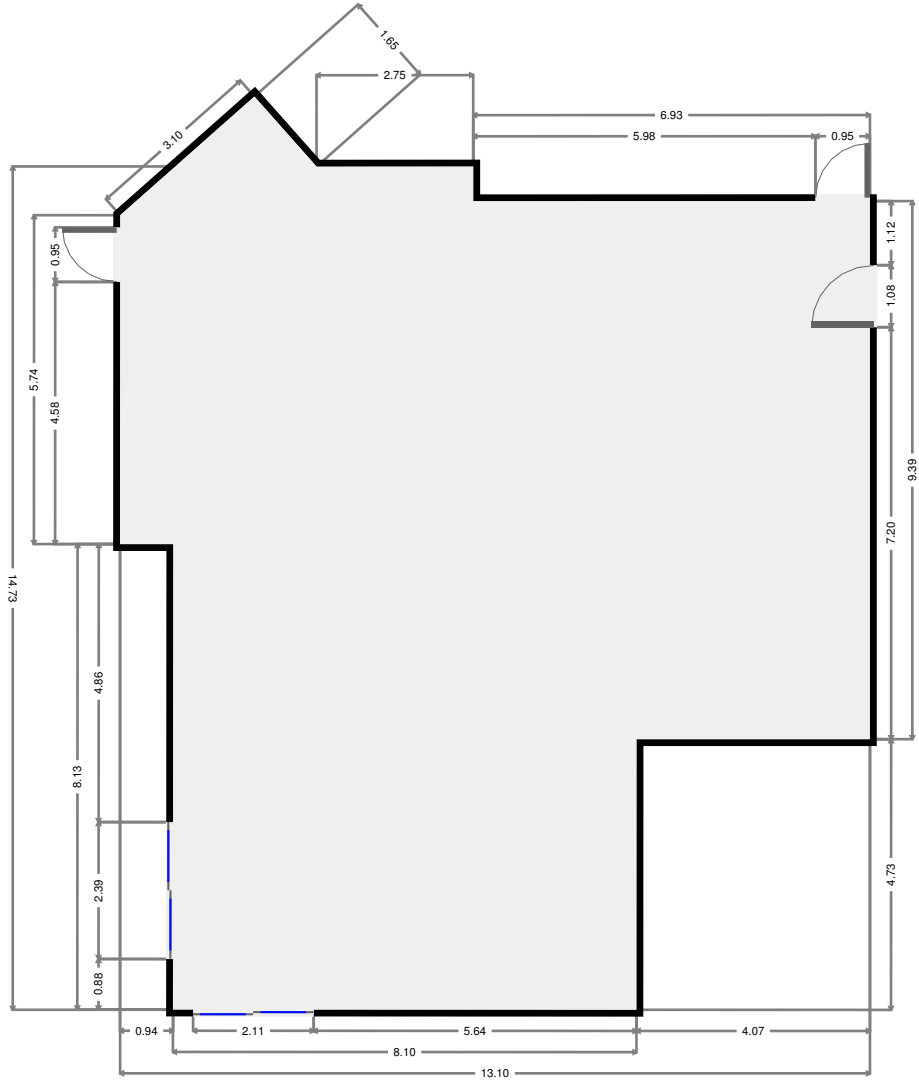
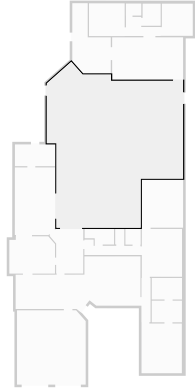
Width: 4.05 m
 Length: 6.82 m
 Area: 27.69 m²
 Perimeter: 21.76 m



THIS FLOORPLAN IS PROVIDED WITHOUT WARRANTY OF ANY KIND. SENSOPIA DISCLAIMS ANY WARRANTY INCLUDING, WITHOUT LIMITATION, SATISFACTORY QUALITY OR ACCURACY OF DIMENSIONS.

Pool / Entertainment Area

Width: 13.10 m
 Length: 14.73 m
 Area: 163.01 m²
 Perimeter: 56.14 m
 Ceiling Height: 2.17 m



THIS FLOORPLAN IS PROVIDED WITHOUT WARRANTY OF ANY KIND. SENSOPIA DISCLAIMS ANY WARRANTY INCLUDING, WITHOUT LIMITATION, SATISFACTORY QUALITY OR ACCURACY OF DIMENSIONS.

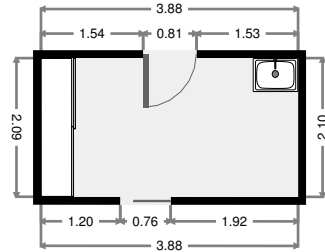
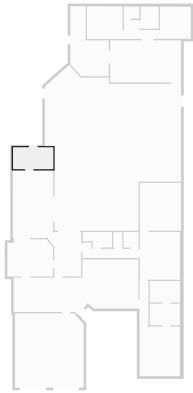


335 Frenchville Road

2017-02-28

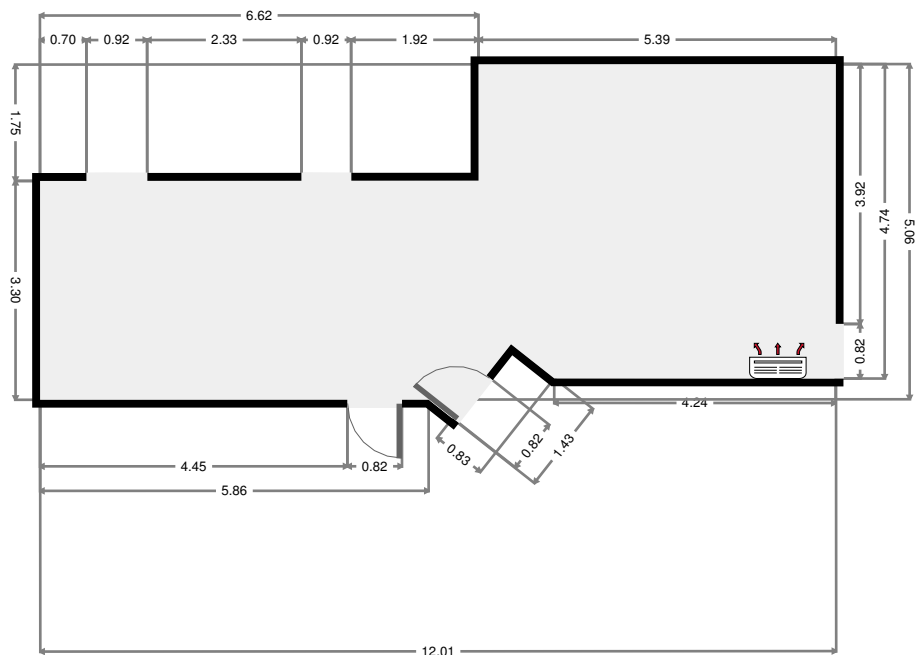
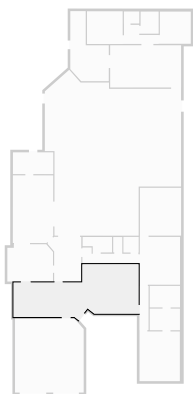
Laundry Room

Width: 2.10 m
 Length: 3.88 m
 Area: 8.11 m²
 Perimeter: 11.94 m



Living Room

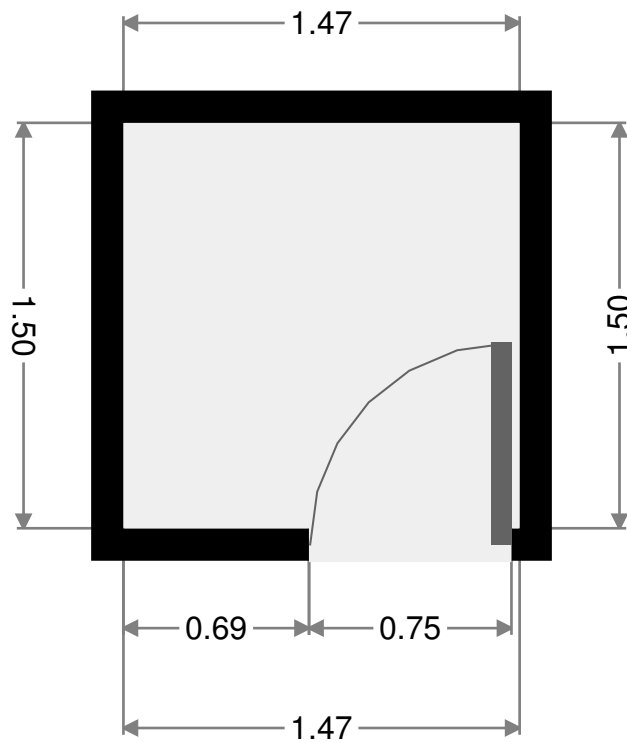
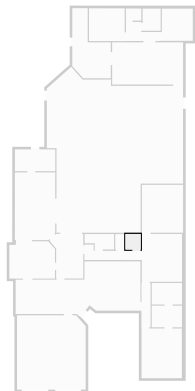
Width: 5.06 m
 Length: 12.01 m
 Area: 47.18 m²
 Perimeter: 34.63 m
 Ceiling Height: 2.17 m



THIS FLOORPLAN IS PROVIDED WITHOUT WARRANTY OF ANY KIND. SENSOPIA DISCLAIMS ANY WARRANTY INCLUDING, WITHOUT LIMITATION, SATISFACTORY QUALITY OR ACCURACY OF DIMENSIONS.

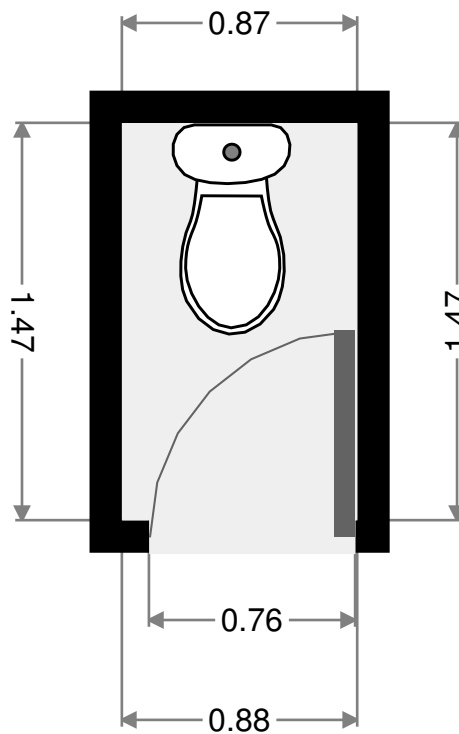
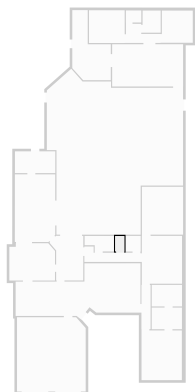
Closet

Width: 1.47 m
 Length: 1.50 m
 Area: 2.20 m²
 Perimeter: 5.94 m



Toilet

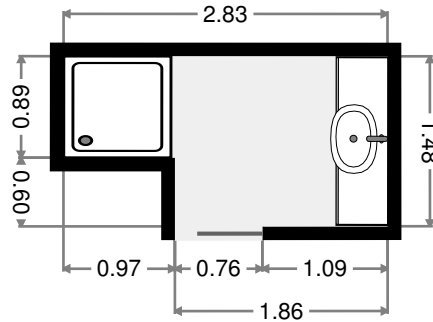
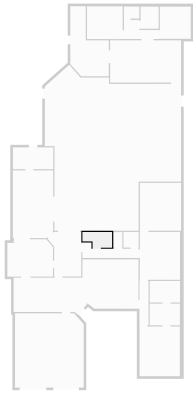
Width: 0.87 m
 Length: 1.47 m
 Area: 1.28 m²
 Perimeter: 4.69 m



THIS FLOORPLAN IS PROVIDED WITHOUT WARRANTY OF ANY KIND. SENSOPIA DISCLAIMS ANY WARRANTY INCLUDING, WITHOUT LIMITATION, SATISFACTORY QUALITY OR ACCURACY OF DIMENSIONS.

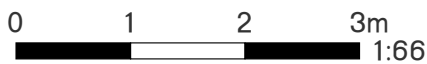
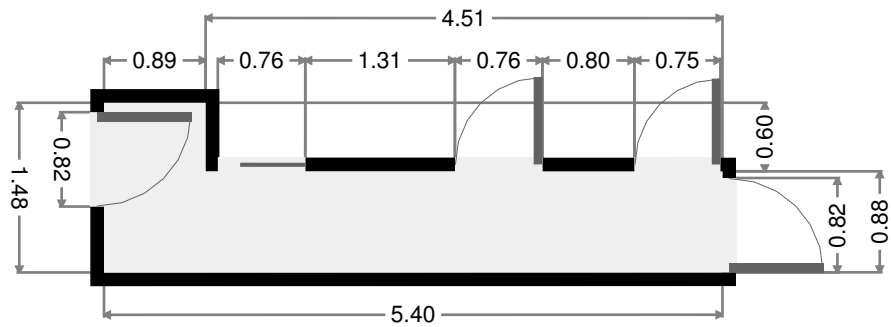
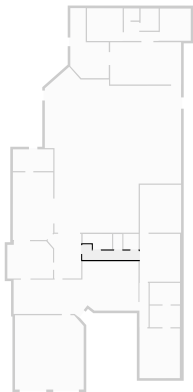
Bathroom

Width: 1.48 m
 Length: 2.83 m
 Area: 3.62 m²
 Perimeter: 8.63 m



Hall

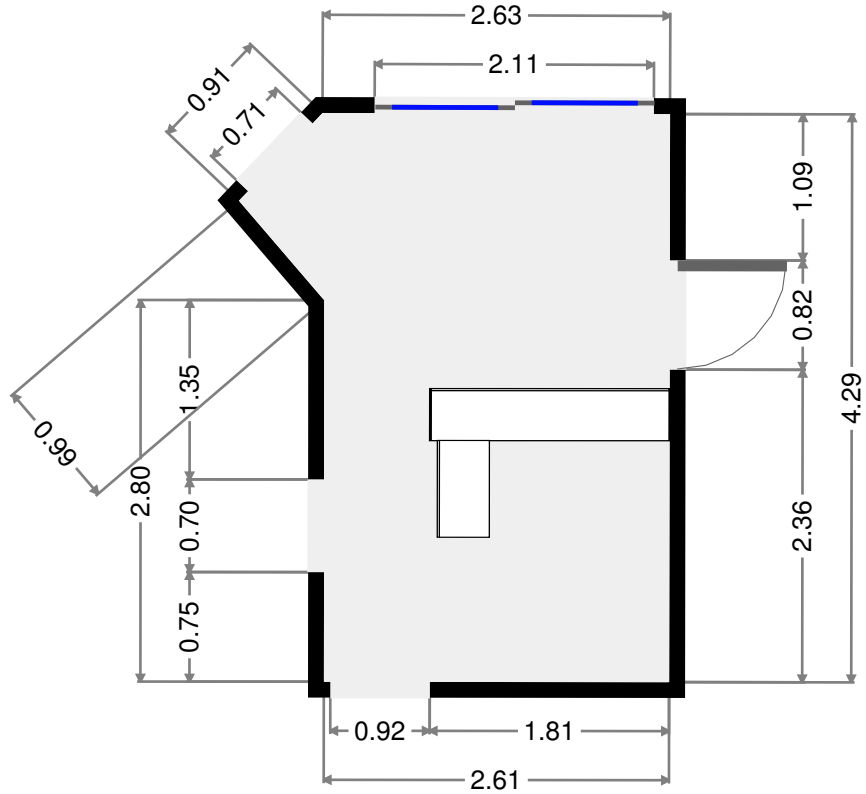
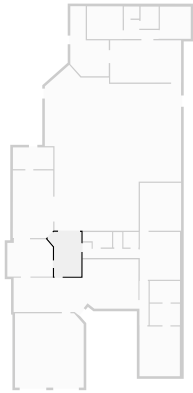
Width: 1.48 m
 Length: 5.40 m
 Area: 5.30 m²
 Perimeter: 13.76 m



THIS FLOORPLAN IS PROVIDED WITHOUT WARRANTY OF ANY KIND. SENSOPIA DISCLAIMS ANY WARRANTY INCLUDING, WITHOUT LIMITATION, SATISFACTORY QUALITY OR ACCURACY OF DIMENSIONS.

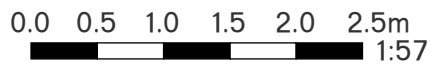
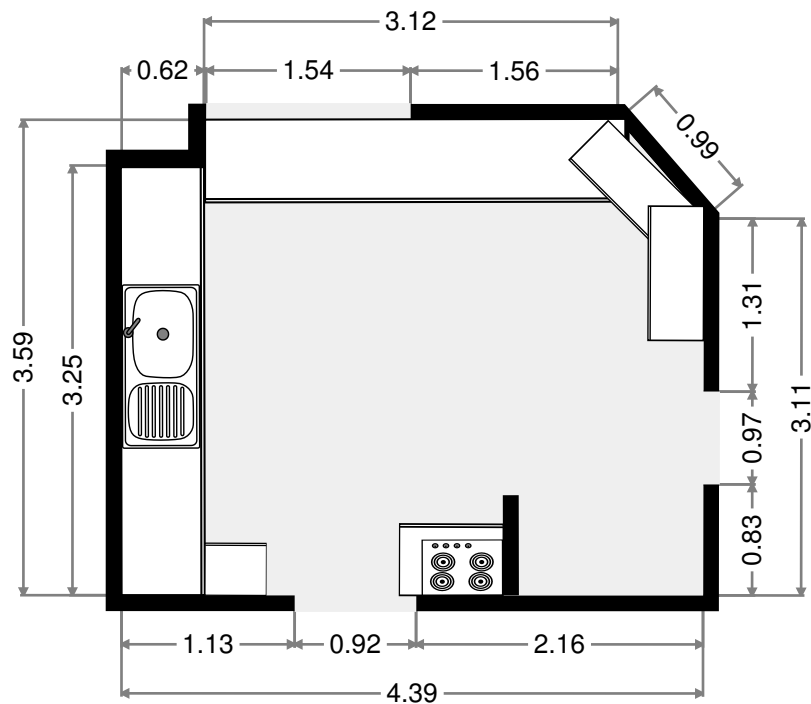
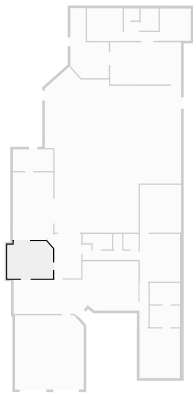
Bar Area

Width: 2.62 m
 Length: 4.29 m
 Area: 11.63 m²
 Perimeter: 14.29 m



Kitchen

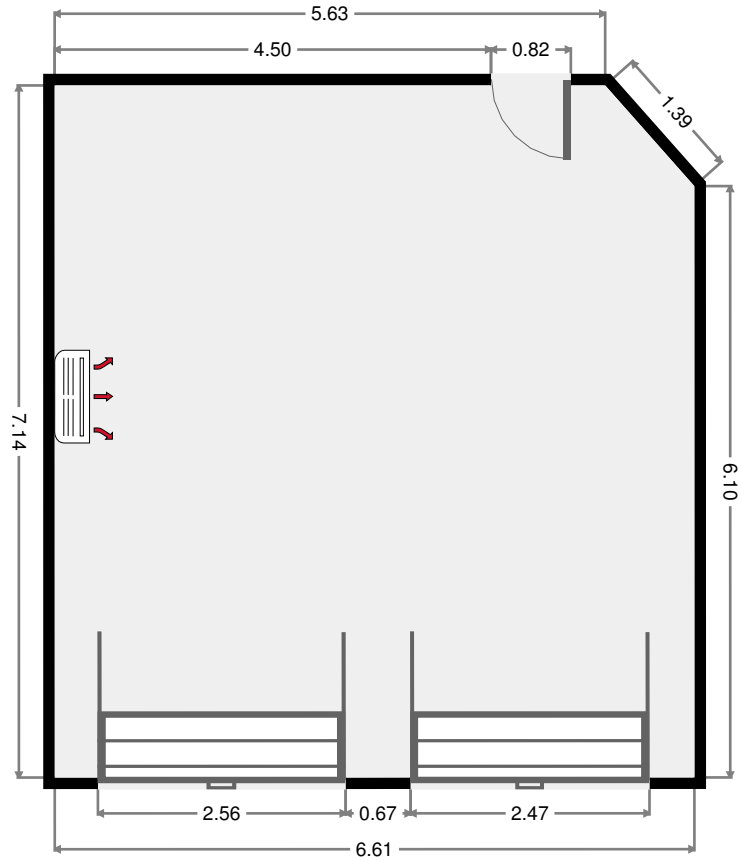
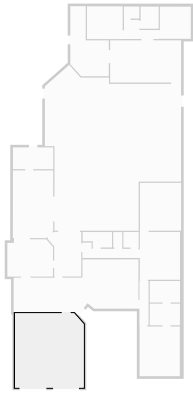
Width: 3.59 m
 Length: 4.39 m
 Area: 15.28 m²
 Perimeter: 15.54 m
 Ceiling Height: 2.17 m



THIS FLOORPLAN IS PROVIDED WITHOUT WARRANTY OF ANY KIND. SENSOPIA DISCLAIMS ANY WARRANTY INCLUDING, WITHOUT LIMITATION, SATISFACTORY QUALITY OR ACCURACY OF DIMENSIONS.

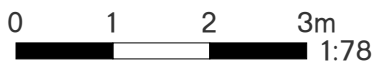
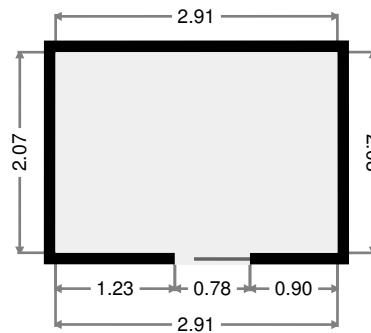
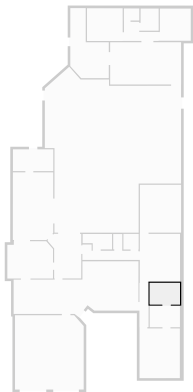
Garage

Width: 6.61 m
 Length: 7.14 m
 Area: 46.68 m²
 Perimeter: 26.92 m



WIR

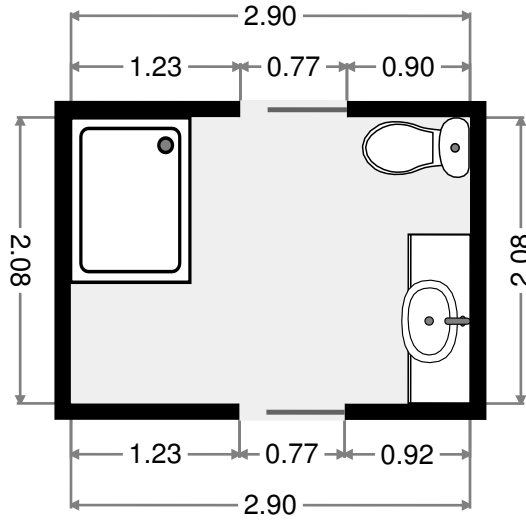
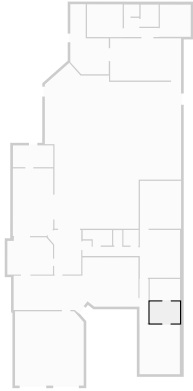
Width: 2.08 m
 Length: 2.91 m
 Area: 6.02 m²
 Perimeter: 9.96 m



THIS FLOORPLAN IS PROVIDED WITHOUT WARRANTY OF ANY KIND. SENSOPIA DISCLAIMS ANY WARRANTY INCLUDING, WITHOUT LIMITATION, SATISFACTORY QUALITY OR ACCURACY OF DIMENSIONS.

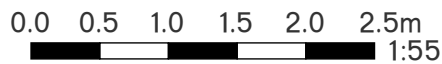
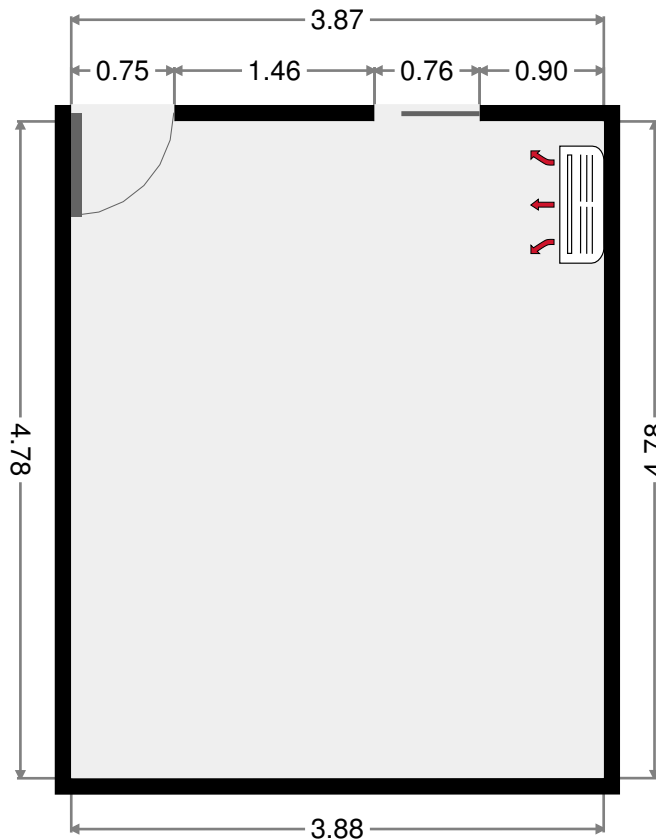
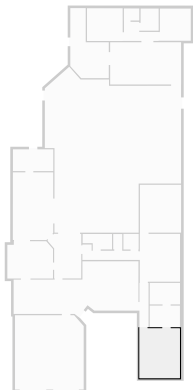
Ensuite

Width: 2.08 m
 Length: 2.90 m
 Area: 6.04 m²
 Perimeter: 9.97 m



Master Bedroom

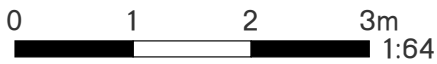
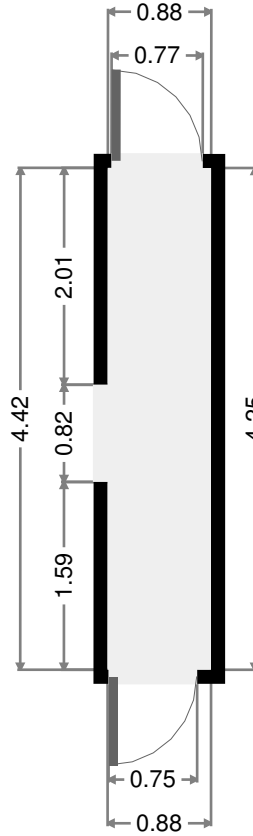
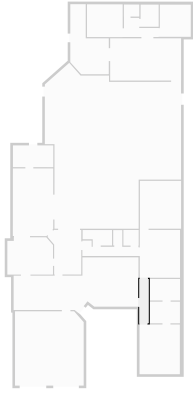
Width: 3.88 m
 Length: 4.78 m
 Area: 18.52 m²
 Perimeter: 17.31 m



THIS FLOORPLAN IS PROVIDED WITHOUT WARRANTY OF ANY KIND. SENSOPIA DISCLAIMS ANY WARRANTY INCLUDING, WITHOUT LIMITATION, SATISFACTORY QUALITY OR ACCURACY OF DIMENSIONS.

Hall

Width: 0.88 m
Length: 4.25 m
Area: 3.72 m²
Perimeter: 10.25 m



THIS FLOORPLAN IS PROVIDED WITHOUT WARRANTY OF ANY KIND. SENSOPIA DISCLAIMS ANY WARRANTY INCLUDING, WITHOUT LIMITATION, SATISFACTORY QUALITY OR ACCURACY OF DIMENSIONS.