

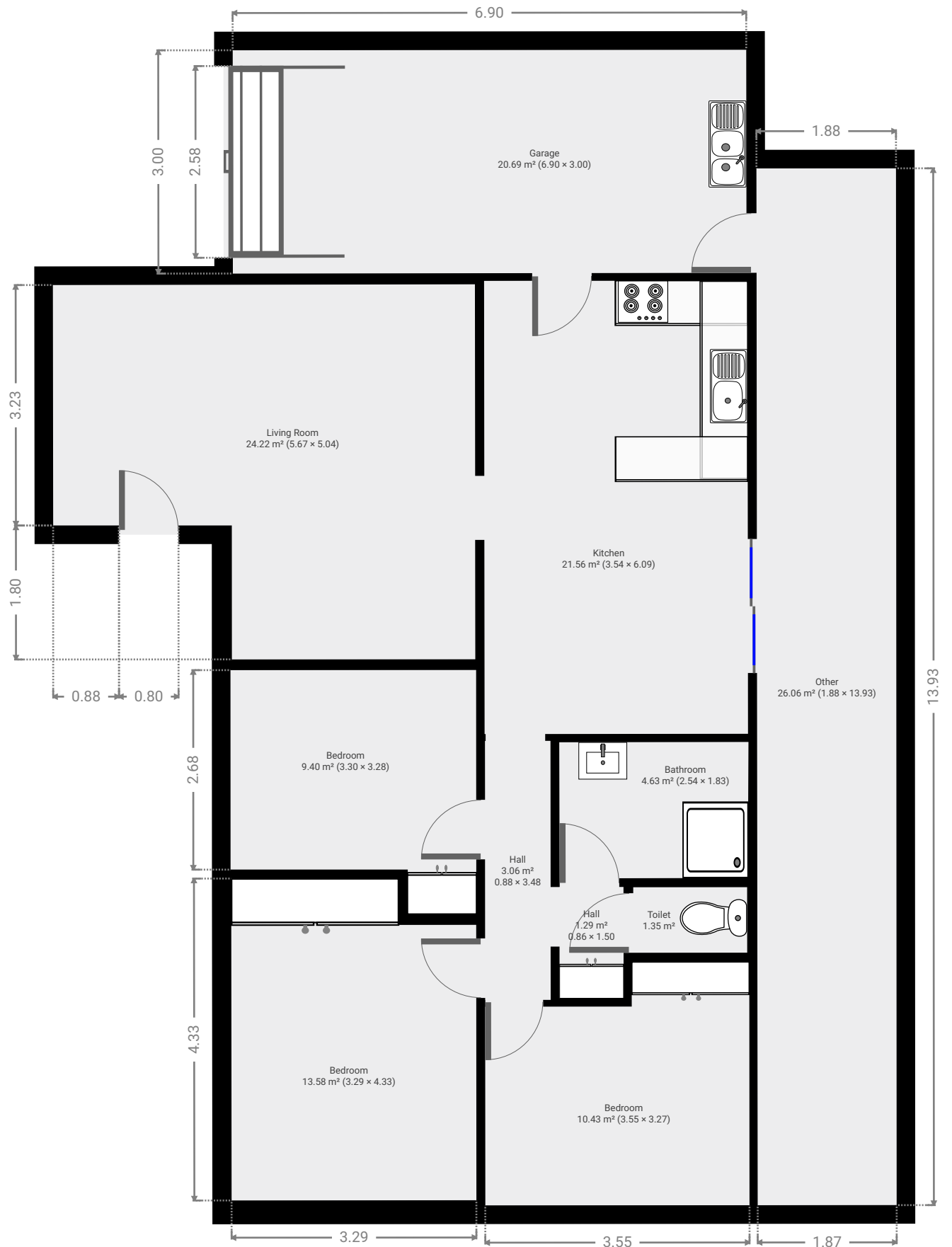
335 Farm street

SUBMITTED BY
Ray White Rockhampton Casey
stockers@cqoz.com

CREATED ON
2022-08-15

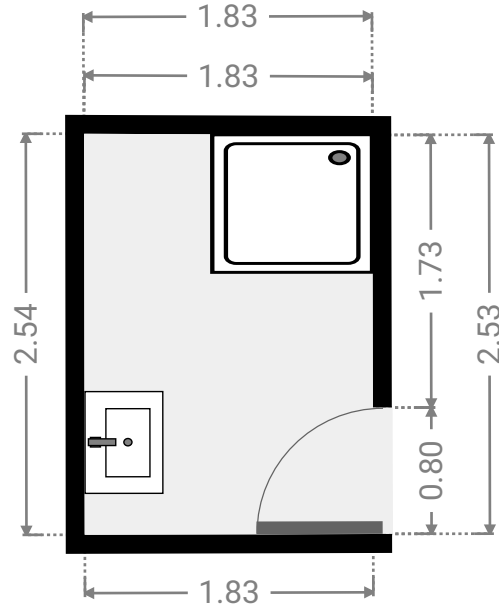
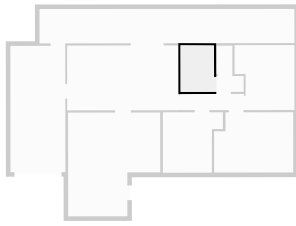
Floors
1

▼ Ground Floor



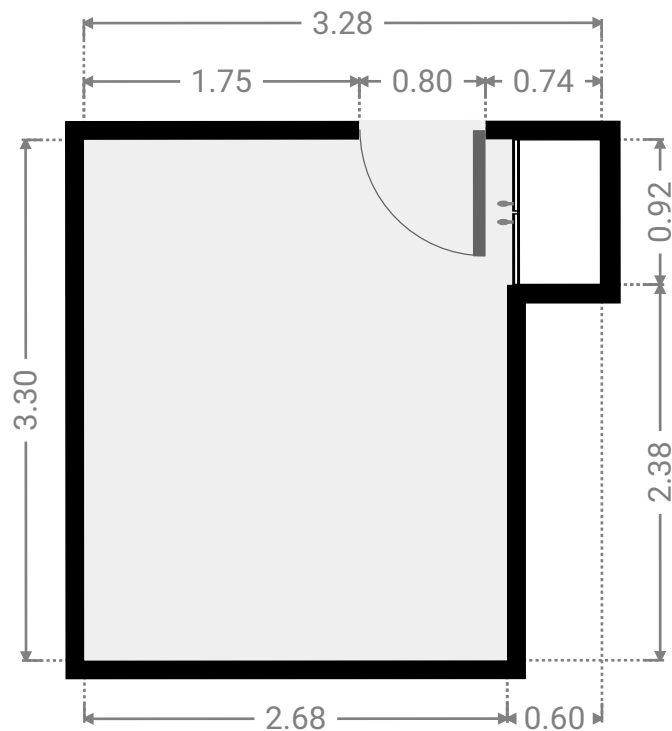
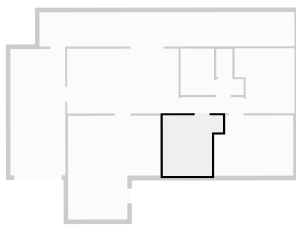
▼ **Bathroom**
Ground Floor

WIDTH: 1.83 m • LENGTH: 2.54 m
AREA: 4.63 m² • PERIMETER: 8.73 m



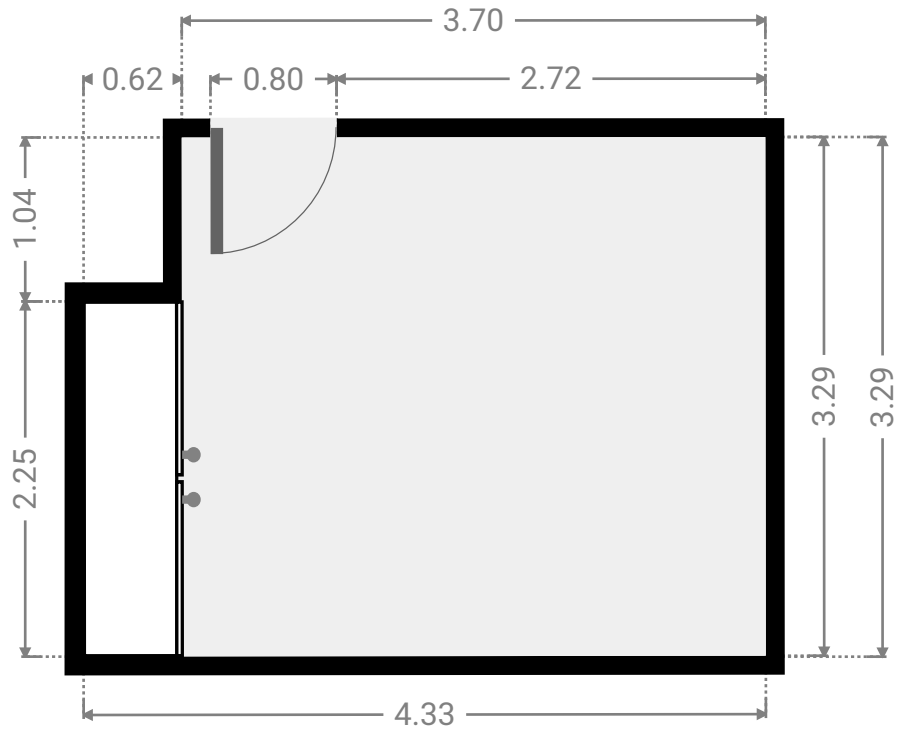
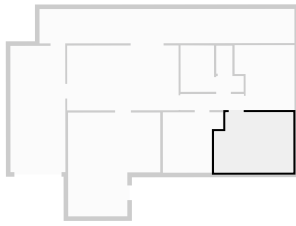
▼ **Bedroom**
Ground Floor

WIDTH: 3.28 m • LENGTH: 3.30 m
AREA: 9.40 m² • PERIMETER: 13.16 m



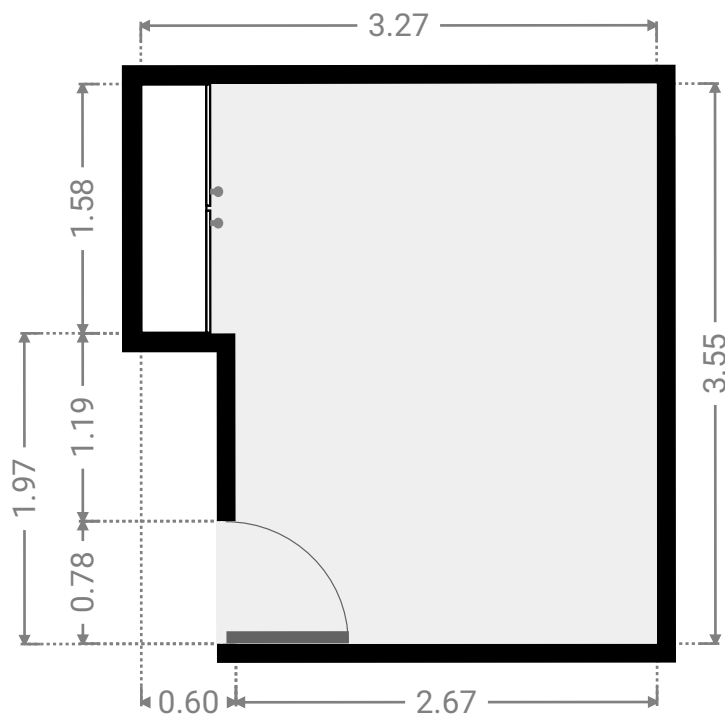
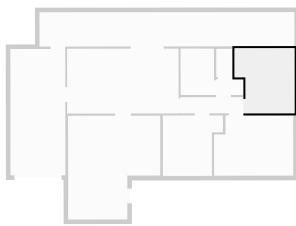
▼ **Bedroom**
Ground Floor

WIDTH: 4.33 m • LENGTH: 3.29 m
AREA: 13.58 m² • PERIMETER: 15.23 m



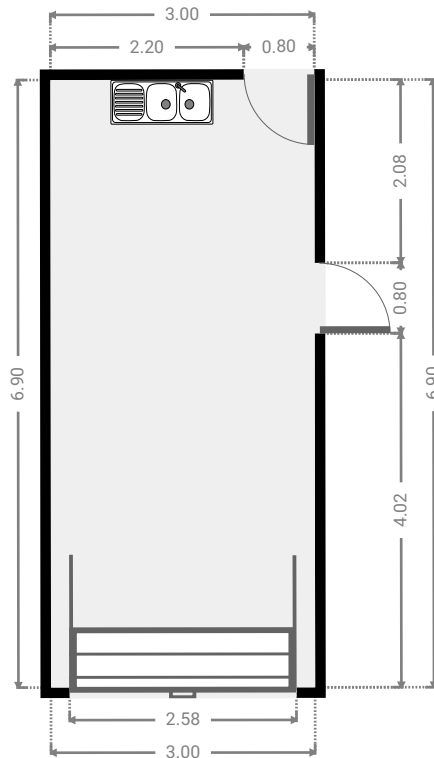
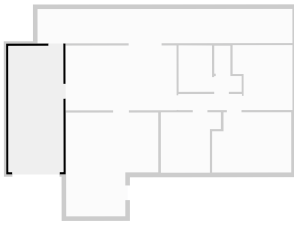
▼ **Bedroom**
Ground Floor

WIDTH: 3.27 m • LENGTH: 3.55 m
AREA: 10.43 m² • PERIMETER: 13.64 m



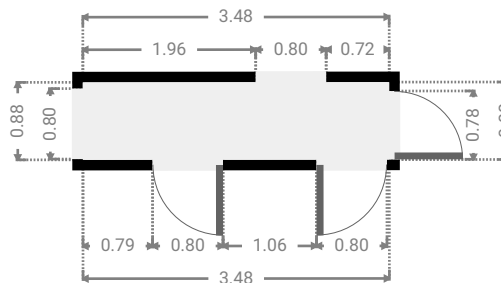
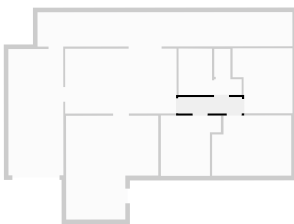
▼ **Garage**
Ground Floor

WIDTH: 3.00 m • LENGTH: 6.90 m
AREA: 20.69 m² • PERIMETER: 19.80 m



▼ **Hall**
Ground Floor

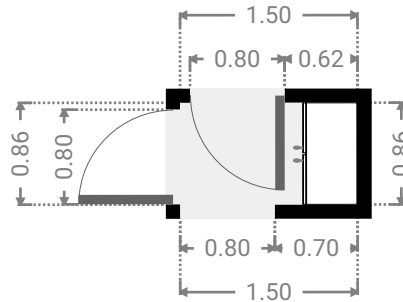
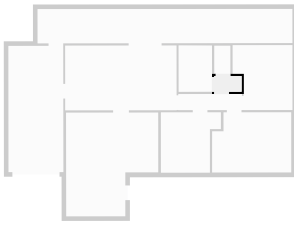
WIDTH: 3.48 m • LENGTH: 0.88 m
AREA: 3.06 m² • PERIMETER: 8.72 m



FLOORS: 1

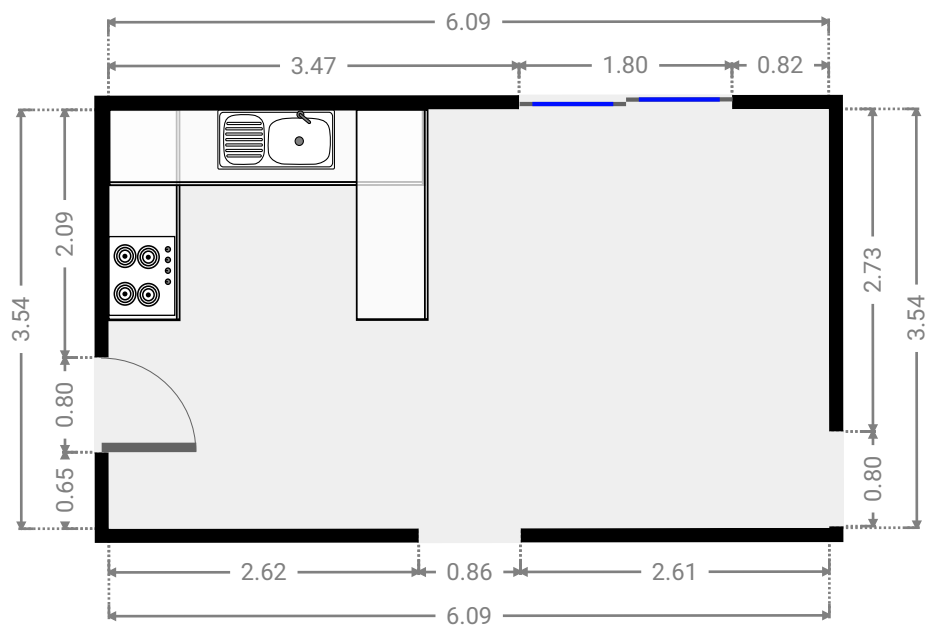
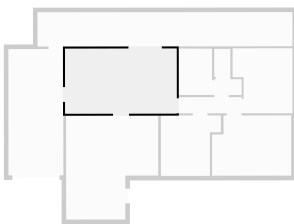
▼ **Hall**
Ground Floor

WIDTH: 1.50 m • LENGTH: 0.86 m
AREA: 1.29 m² • PERIMETER: 4.72 m



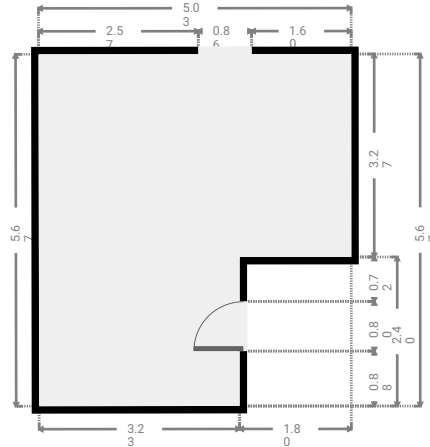
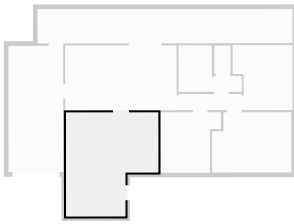
▼ **Kitchen**
Ground Floor

WIDTH: 6.09 m • LENGTH: 3.54 m
AREA: 21.56 m² • PERIMETER: 19.26 m



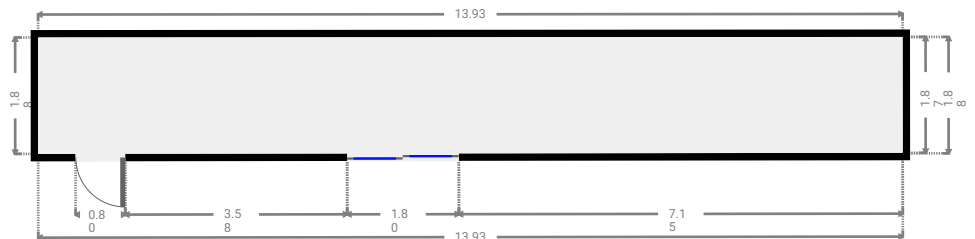
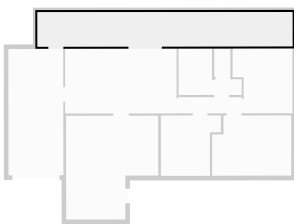
▼ **Living Room**
Ground Floor

WIDTH: 5.04 m • LENGTH: 5.67 m
AREA: 24.22 m² • PERIMETER: 21.41 m



▼ **Other**
Ground Floor

WIDTH: 13.93 m • LENGTH: 1.88 m
AREA: 26.06 m² • PERIMETER: 31.60 m



▼ Toilet
Ground Floor

WIDTH: 0.88 m • LENGTH: 1.53 m
AREA: 1.35 m² • PERIMETER: 4.82 m

