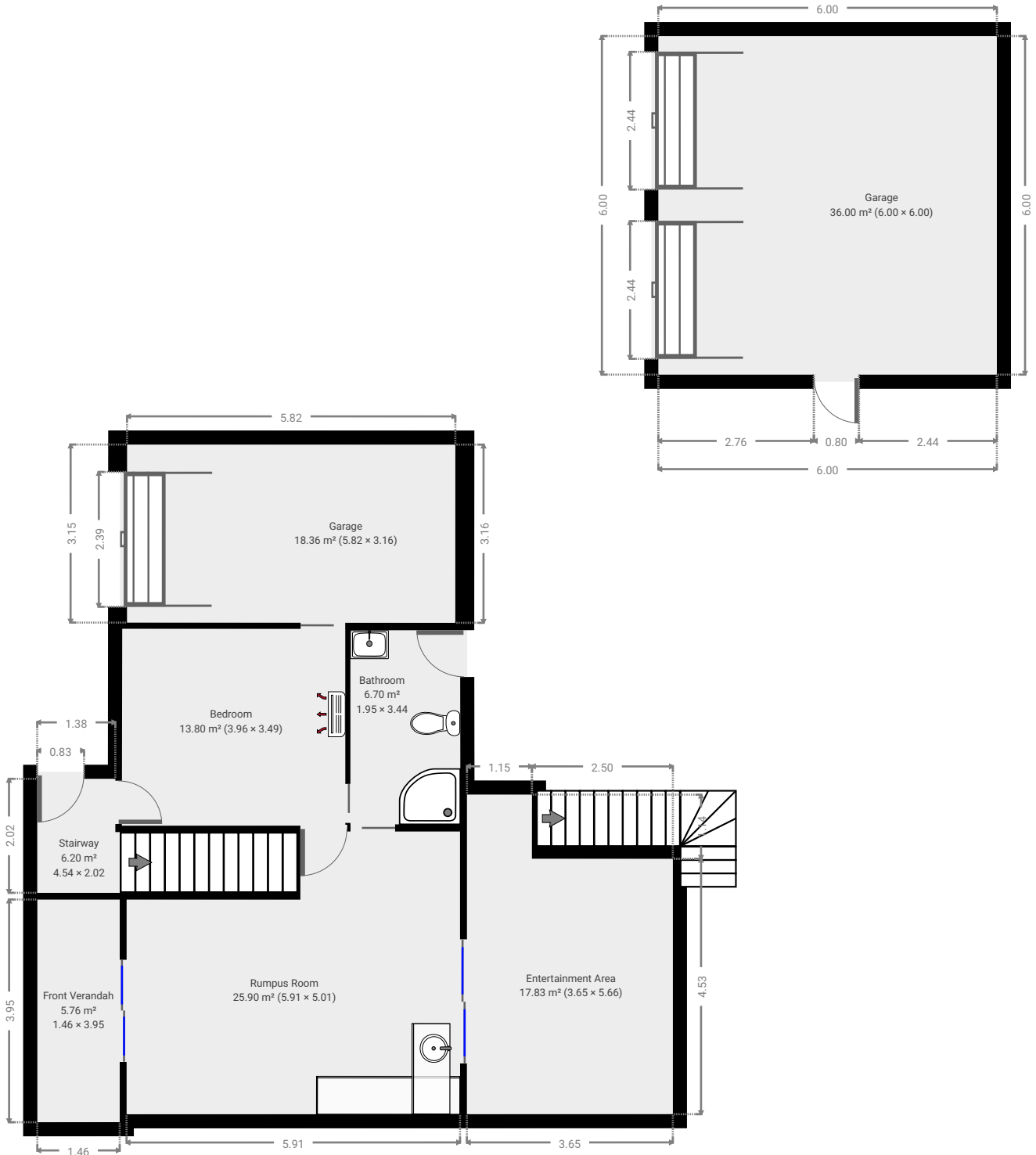


334 Sheilds Avenue

Created on
2018-07-31

Floors 2

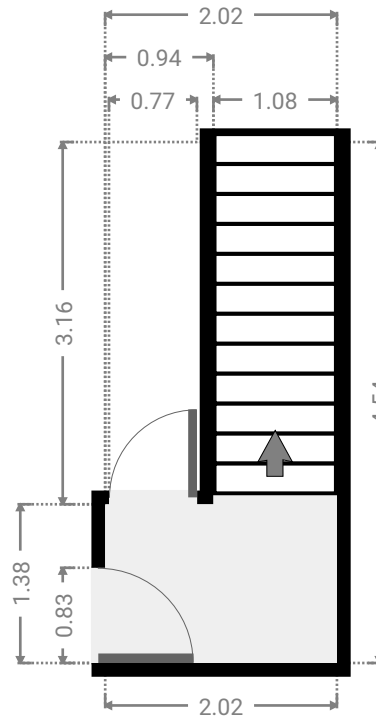
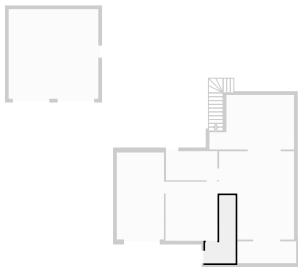
▼ Ground Floor



FLOORS:2

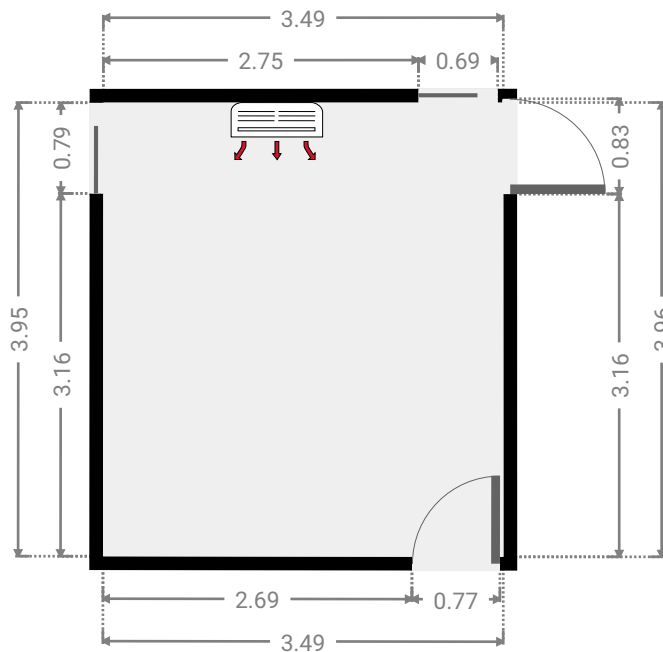
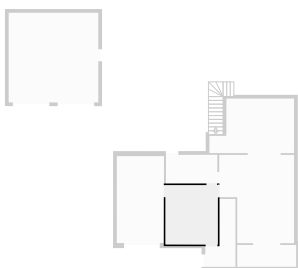
▼ **Stairway**
Ground Floor

WIDTH:2.02 m · LENGTH:4.54 m
AREA:6.20 m² · PERIMETER:13.12 m



▼ **Bedroom**
Ground Floor

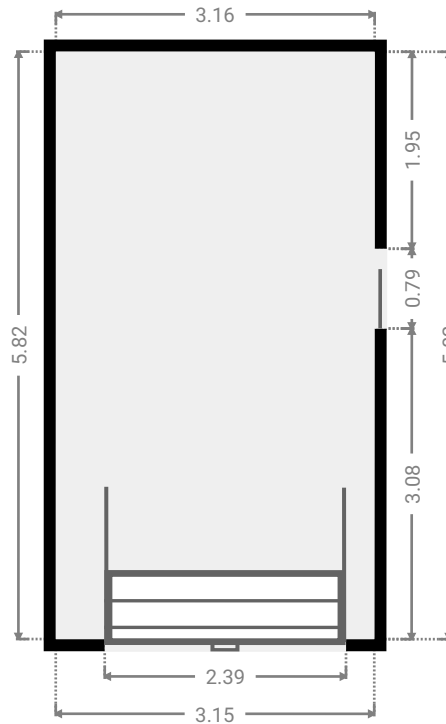
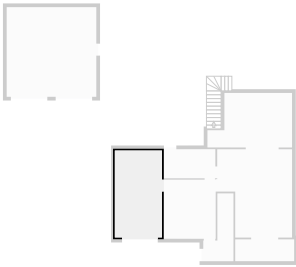
WIDTH:3.49 m · LENGTH:3.96 m
AREA:13.80 m² · PERIMETER:14.89 m



FLOORS:2

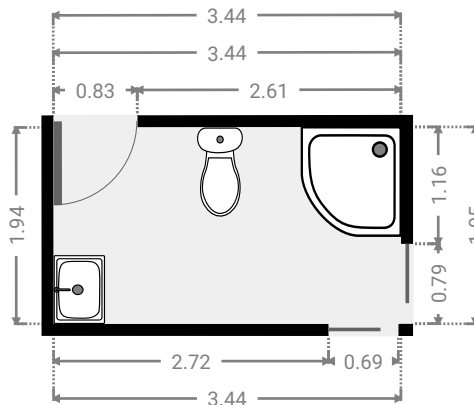
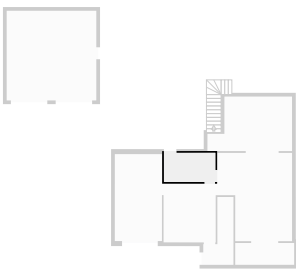
▼ **Garage**
Ground Floor

WIDTH:3.16 m · LENGTH:5.82 m
AREA:18.36 m² · PERIMETER:17.95 m



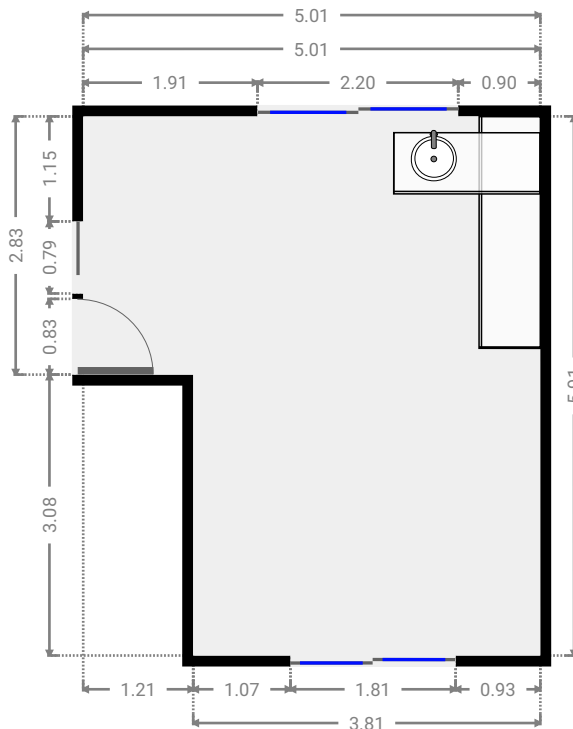
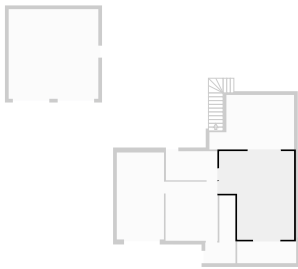
▼ **Bathroom**
Ground Floor

WIDTH:3.44 m · LENGTH:1.95 m
AREA:6.70 m² · PERIMETER:10.78 m



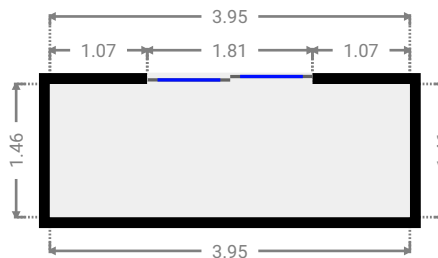
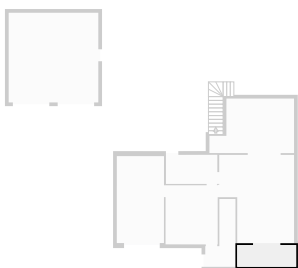
▼ **Rumpus Room**
Ground Floor

WIDTH:5.01 m · LENGTH:5.91 m
AREA:25.90 m² · PERIMETER:21.84 m



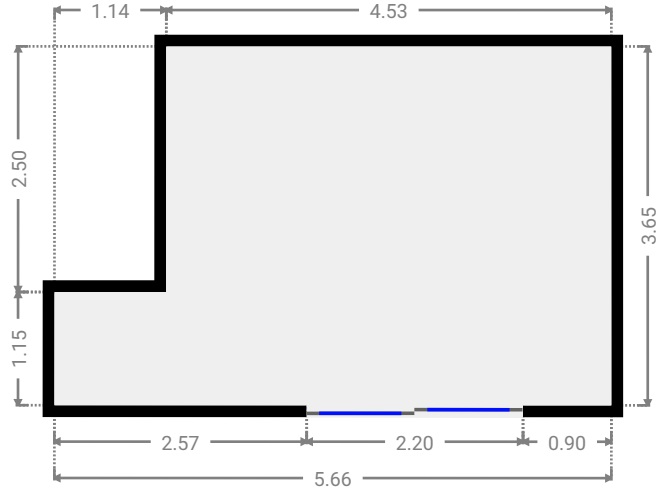
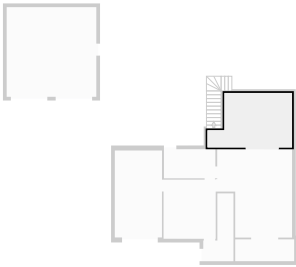
▼ **Front Verandah**
Ground Floor

WIDTH:3.95 m · LENGTH:1.46 m
AREA:5.76 m² · PERIMETER:10.81 m



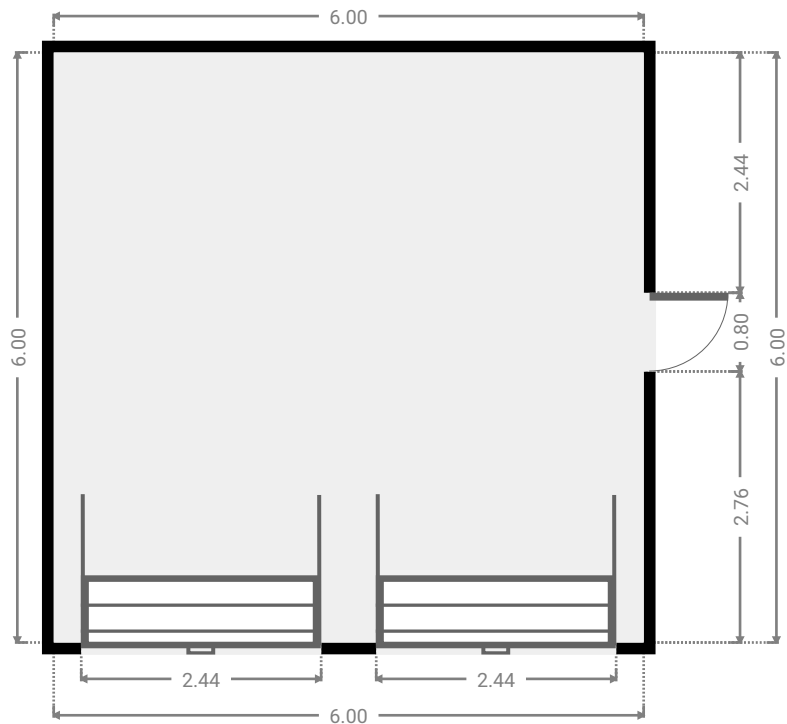
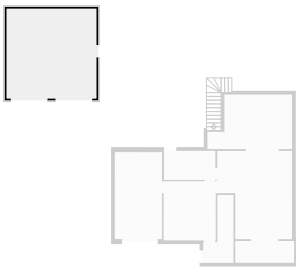
▼ Entertainment Area
Ground Floor

WIDTH:5.66 m · LENGTH:3.65 m
AREA:17.83 m² · PERIMETER:18.63 m

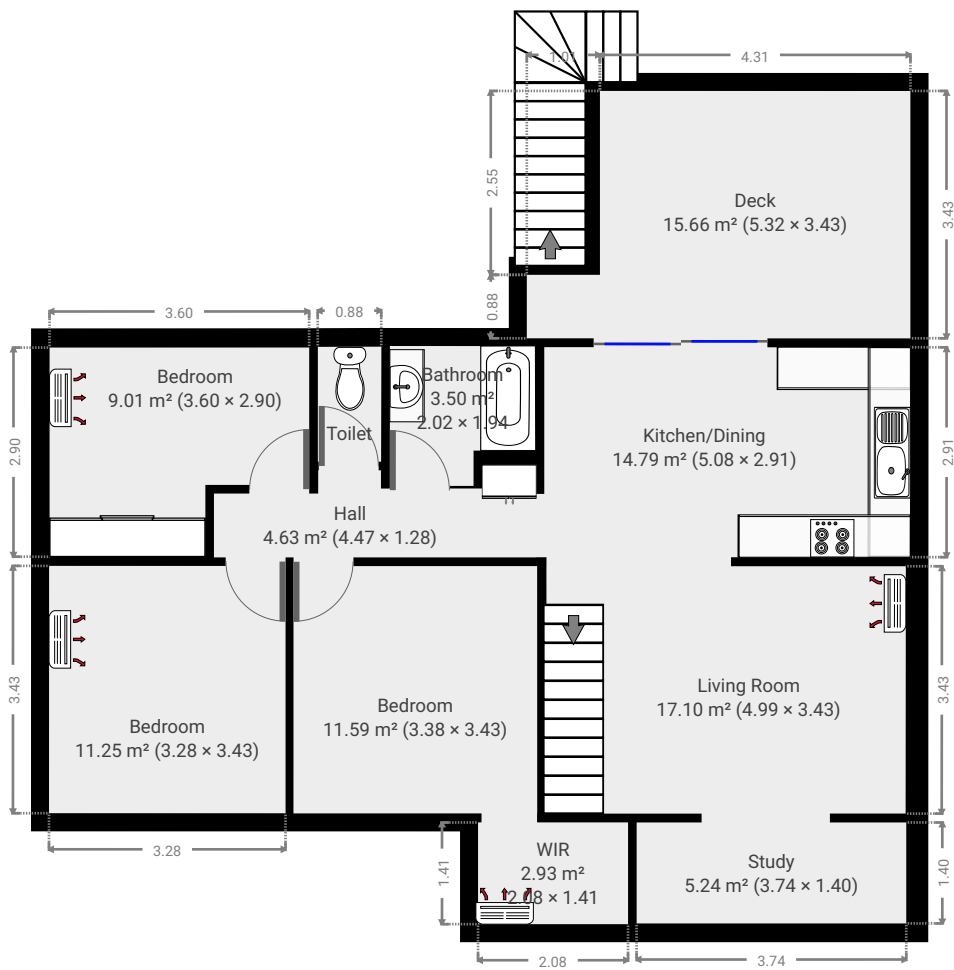


▼ Garage
Ground Floor

WIDTH:6.00 m · LENGTH:6.00 m
AREA:36.00 m² · PERIMETER:24.00 m

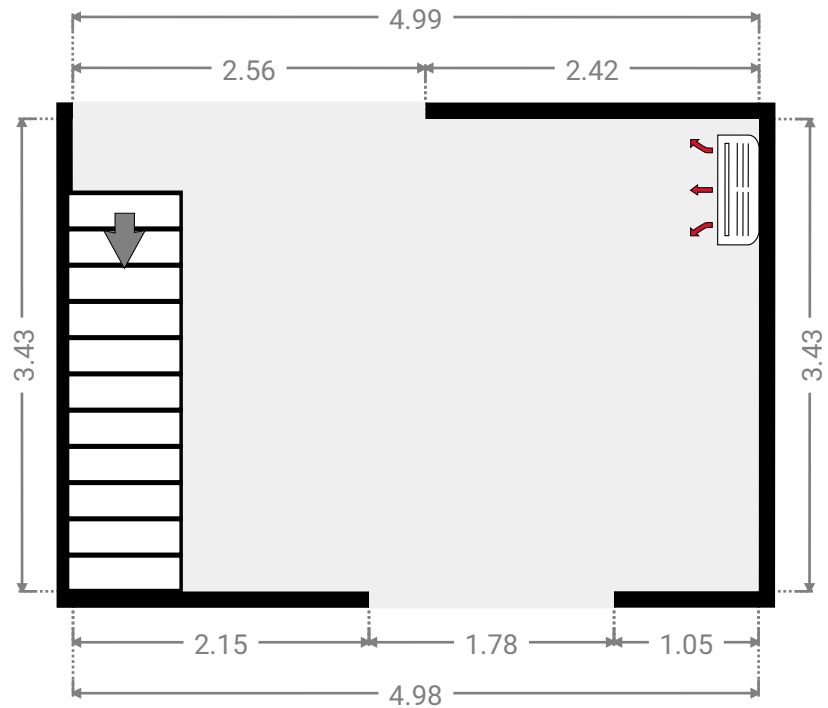
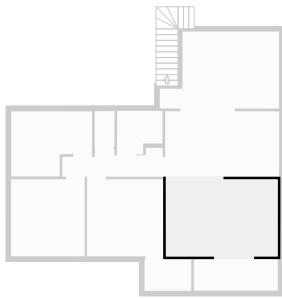


▼ 1st Floor



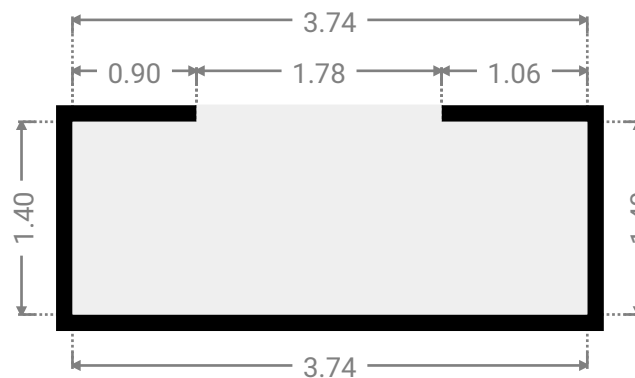
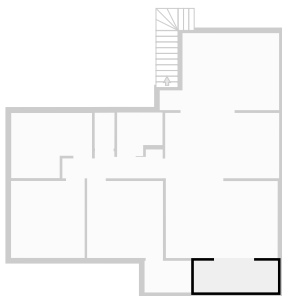
▼ **Living Room**
1st Floor

WIDTH:4.99 m · LENGTH:3.43 m
AREA:17.10 m² · PERIMETER:16.83 m



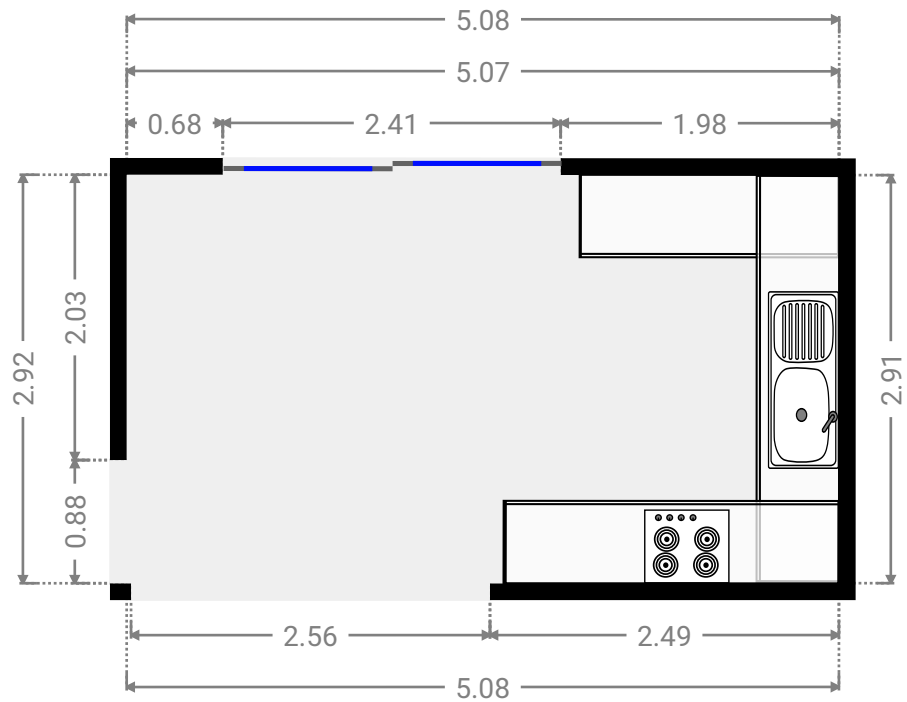
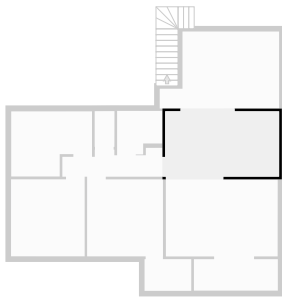
▼ **Study**
1st Floor

WIDTH:3.74 m · LENGTH:1.40 m
AREA:5.24 m² · PERIMETER:10.28 m



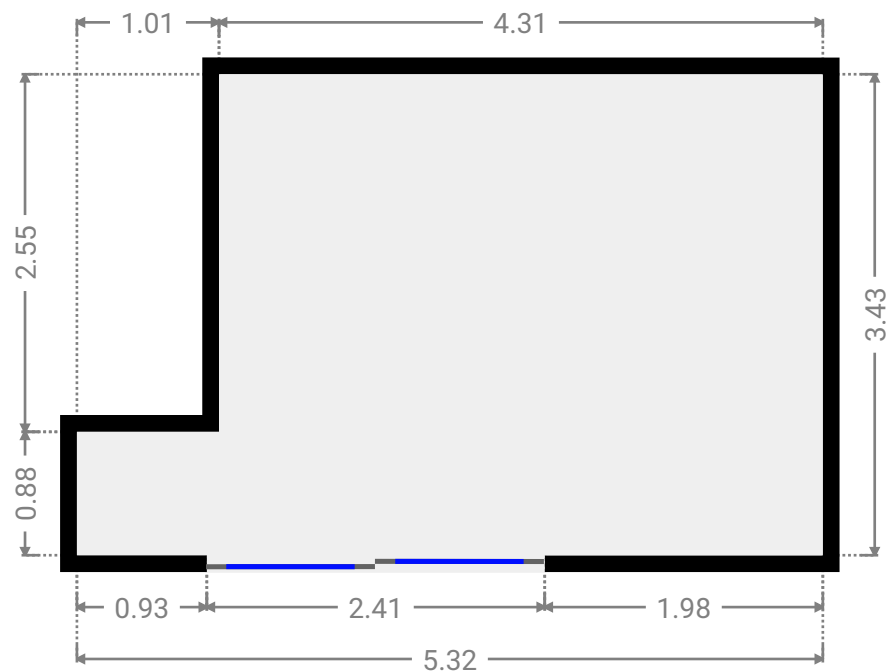
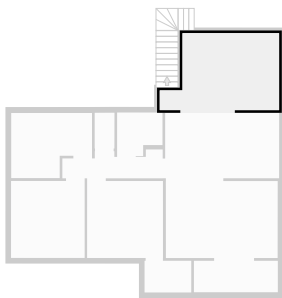
▼ **Kitchen/Dining**
1st Floor

WIDTH:5.08 m · LENGTH:2.91 m
AREA:14.79 m² · PERIMETER:15.98 m



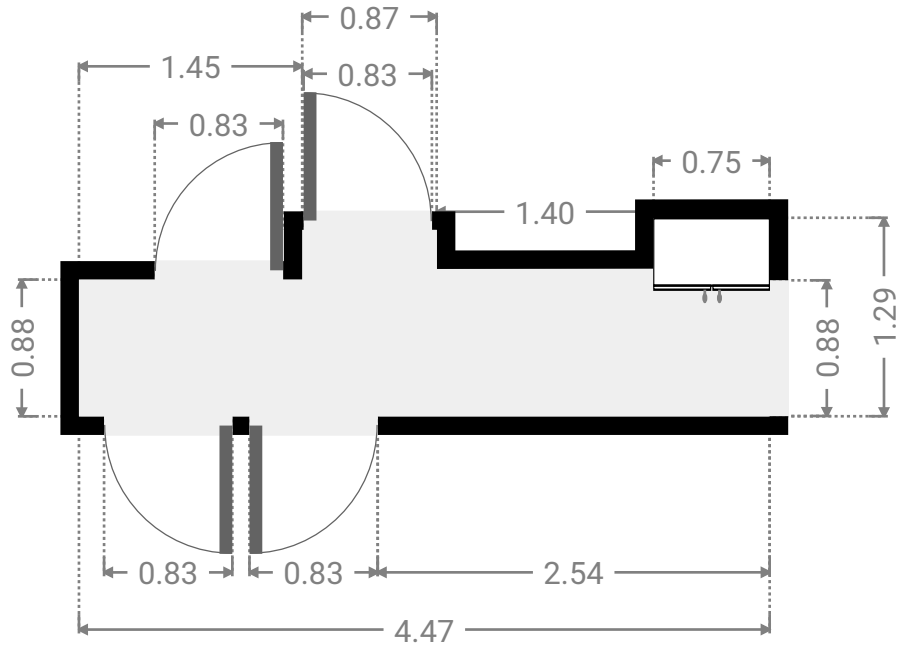
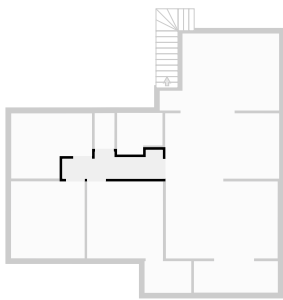
▼ **Deck**
1st Floor

WIDTH:5.32 m · LENGTH:3.43 m
AREA:15.66 m² · PERIMETER:17.50 m



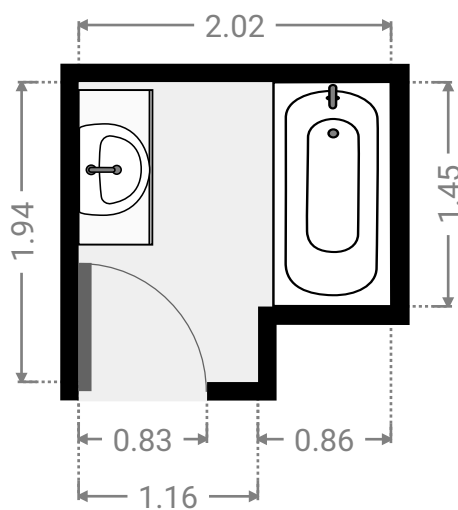
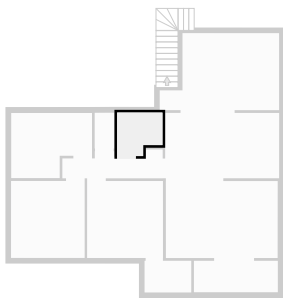
▼ **Hall**
1st Floor

WIDTH:4.47 m · LENGTH:1.28 m
AREA:4.63 m² · PERIMETER:12.01 m



▼ **Bathroom**
1st Floor

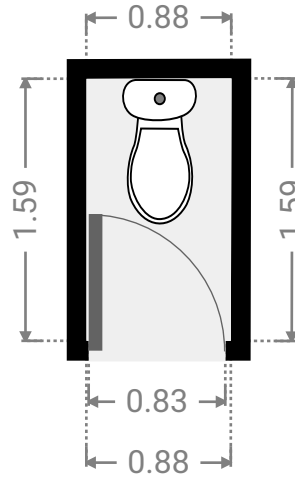
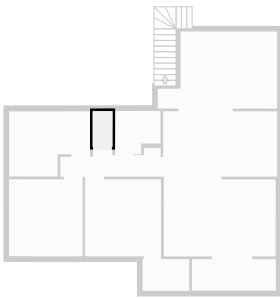
WIDTH:2.02 m · LENGTH:1.94 m
AREA:3.50 m² · PERIMETER:7.92 m



FLOORS:2

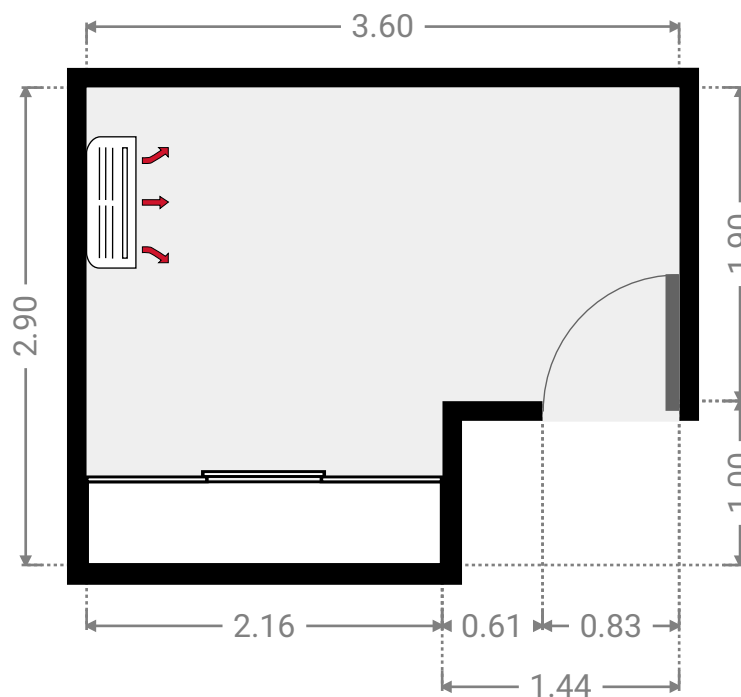
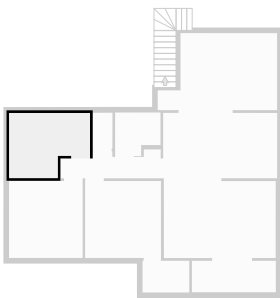
▼ Toilet
1st Floor

WIDTH:0.88 m · LENGTH:1.59 m
AREA:1.40 m² · PERIMETER:4.95 m



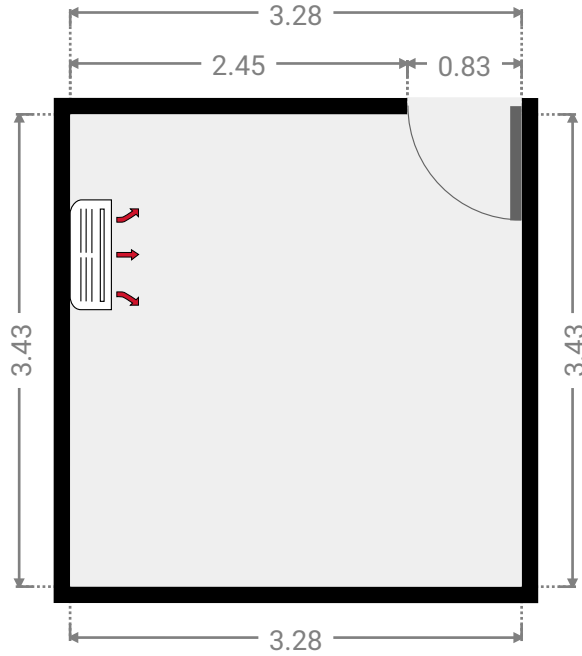
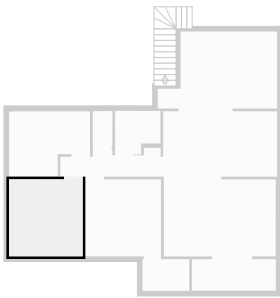
▼ Bedroom
1st Floor

WIDTH:3.60 m · LENGTH:2.90 m
AREA:9.01 m² · PERIMETER:13.00 m



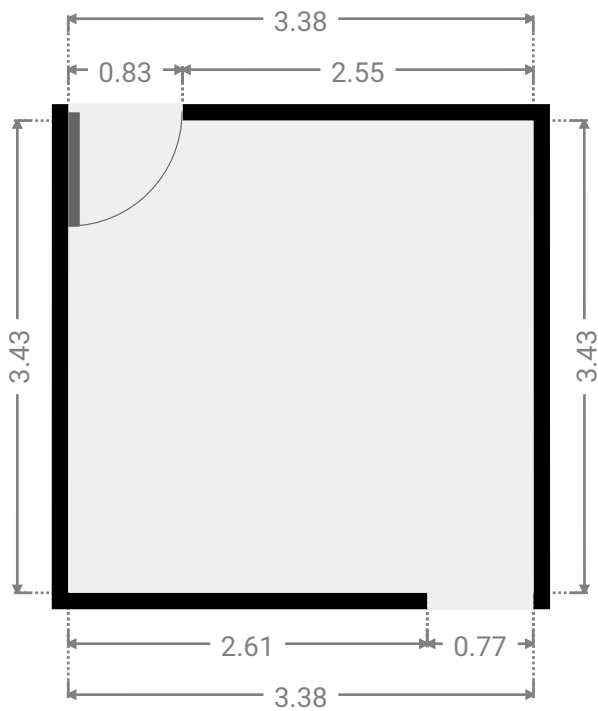
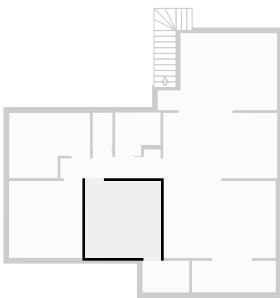
▼ **Bedroom**
1st Floor

WIDTH:3.28 m · LENGTH:3.43 m
AREA:11.25 m² · PERIMETER:13.42 m



▼ **Bedroom**
1st Floor

WIDTH:3.38 m · LENGTH:3.43 m
AREA:11.59 m² · PERIMETER:13.62 m



▼ WIR
1st Floor

WIDTH:2.08 m · LENGTH:1.41 m
AREA:2.93 m² · PERIMETER:6.98 m

