

# 334 Hobler Avenue

## Ground Floor



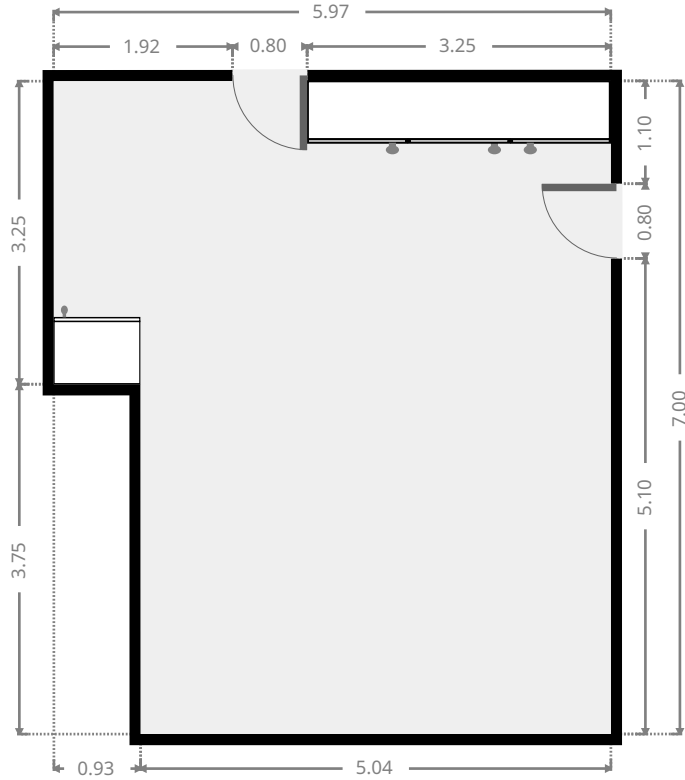
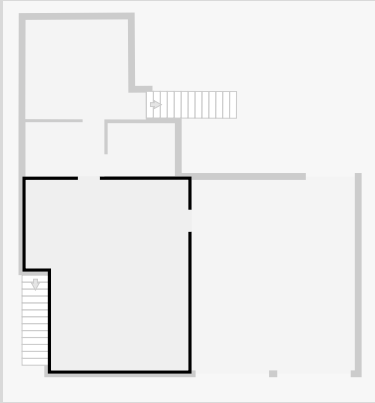
THIS FLOORPLAN IS PROVIDED WITHOUT WARRANTY OF ANY KIND. SENSOPIA DISCLAIMS ANY WARRANTY INCLUDING, WITHOUT LIMITATION, SATISFACTORY QUALITY OR ACCURACY OF DIMENSIONS.



# 334 Hobler Avenue

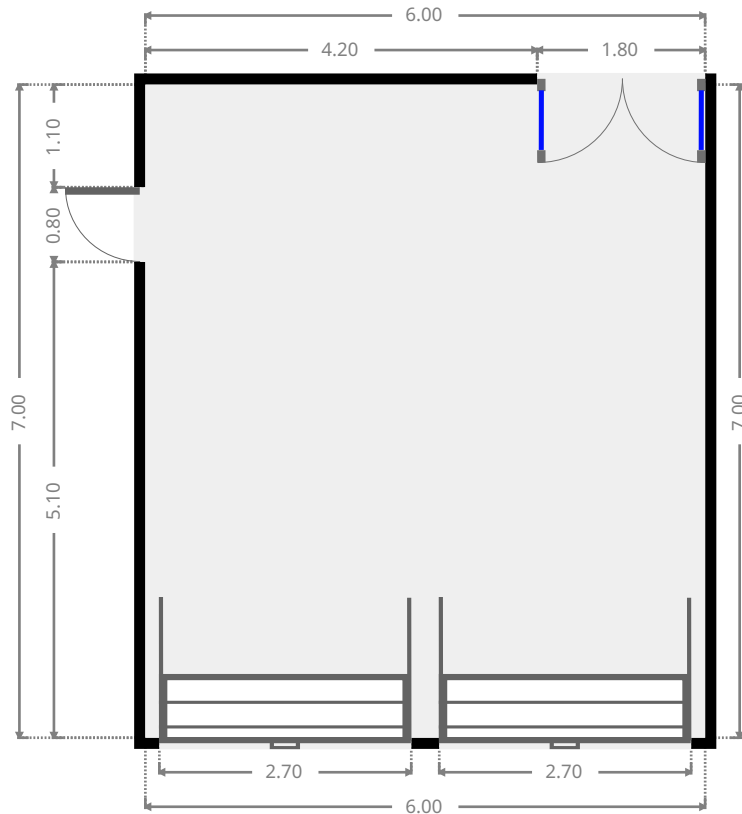
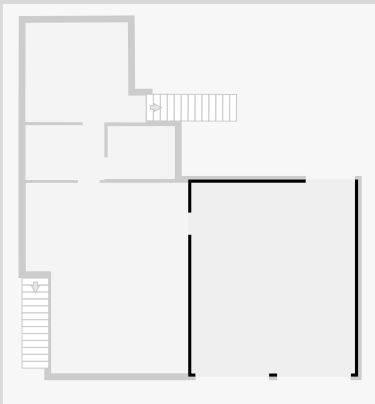
## Living Room

Width: 5.97 m  
 Length: 7.00 m  
 Area: 38.30 m<sup>2</sup>  
 Perimeter: 25.94 m



## Garage

Width: 6.00 m  
 Length: 7.00 m  
 Area: 42.00 m<sup>2</sup>  
 Perimeter: 26.00 m



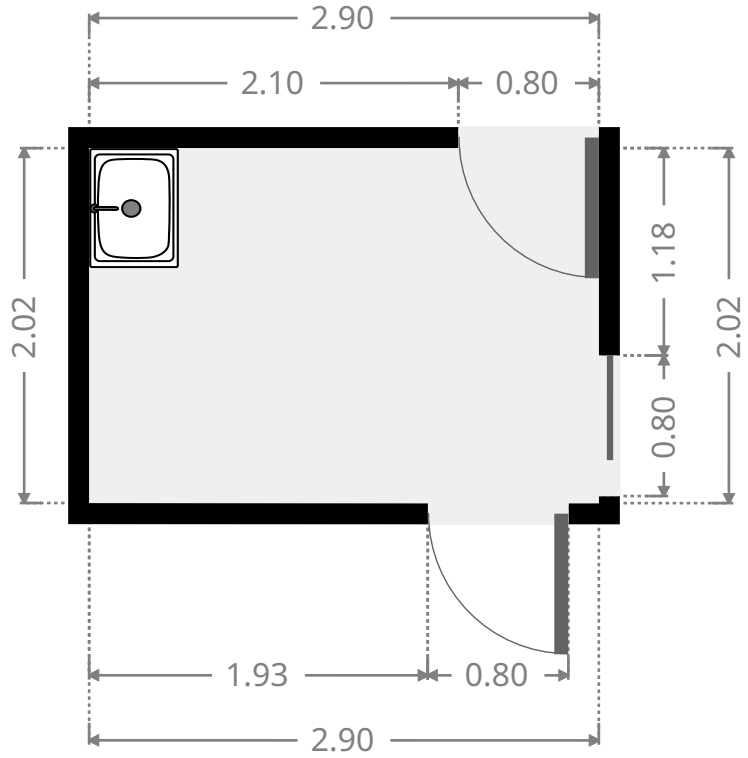
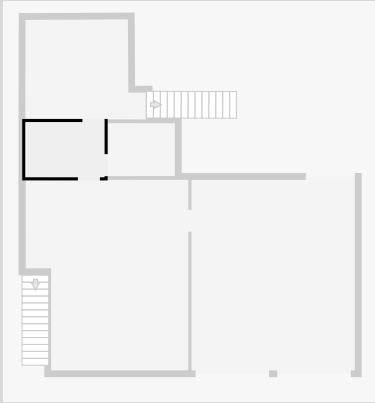
THIS FLOORPLAN IS PROVIDED WITHOUT WARRANTY OF ANY KIND. SENSOPIA DISCLAIMS ANY WARRANTY INCLUDING, WITHOUT LIMITATION, SATISFACTORY QUALITY OR ACCURACY OF DIMENSIONS.



# 334 Hobler Avenue

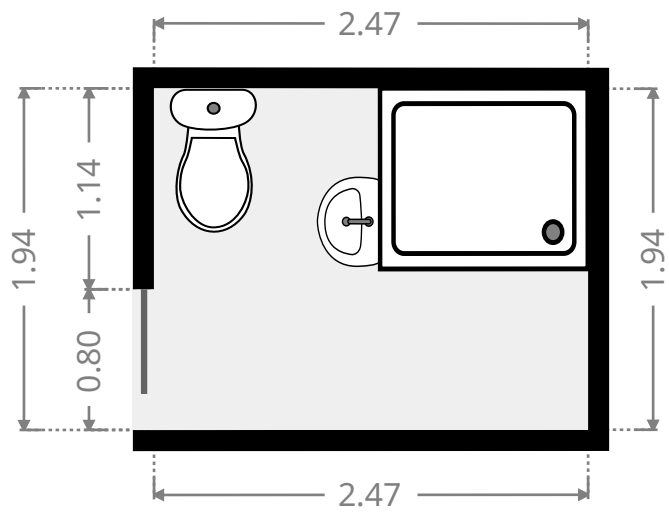
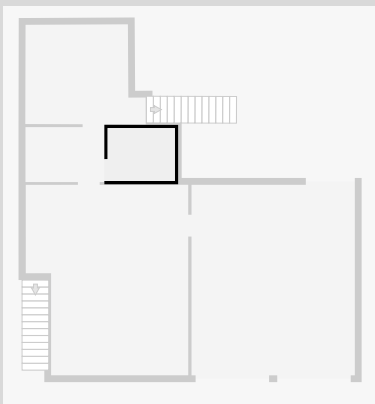
## Laundry Room

Width: 2.02 m  
Length: 2.90 m  
Area: 5.86 m<sup>2</sup>  
Perimeter: 9.84 m

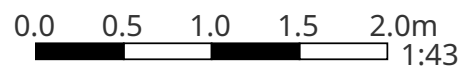


## Bathroom

Width: 1.94 m  
Length: 2.47 m  
Area: 4.80 m<sup>2</sup>  
Perimeter: 8.82 m



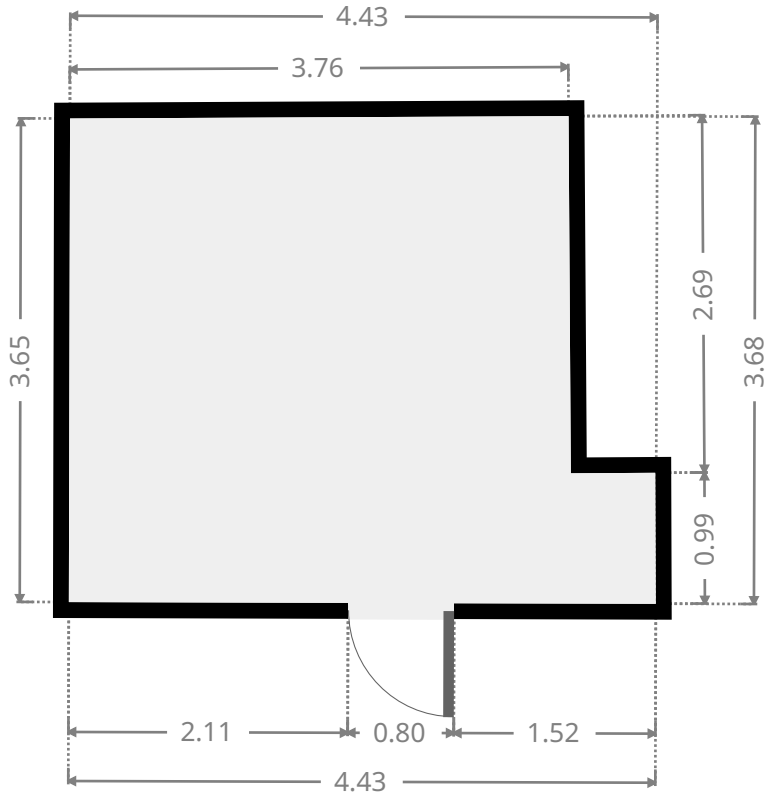
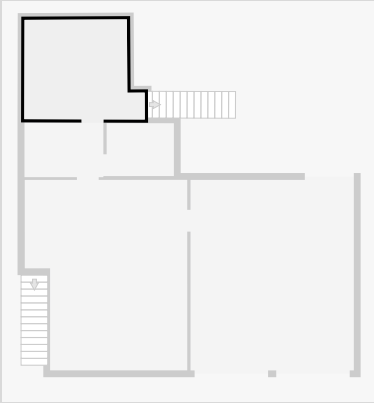
THIS FLOORPLAN IS PROVIDED WITHOUT WARRANTY OF ANY KIND. SENSOPIA DISCLAIMS ANY WARRANTY INCLUDING, WITHOUT LIMITATION, SATISFACTORY QUALITY OR ACCURACY OF DIMENSIONS.



# 334 Hobler Avenue

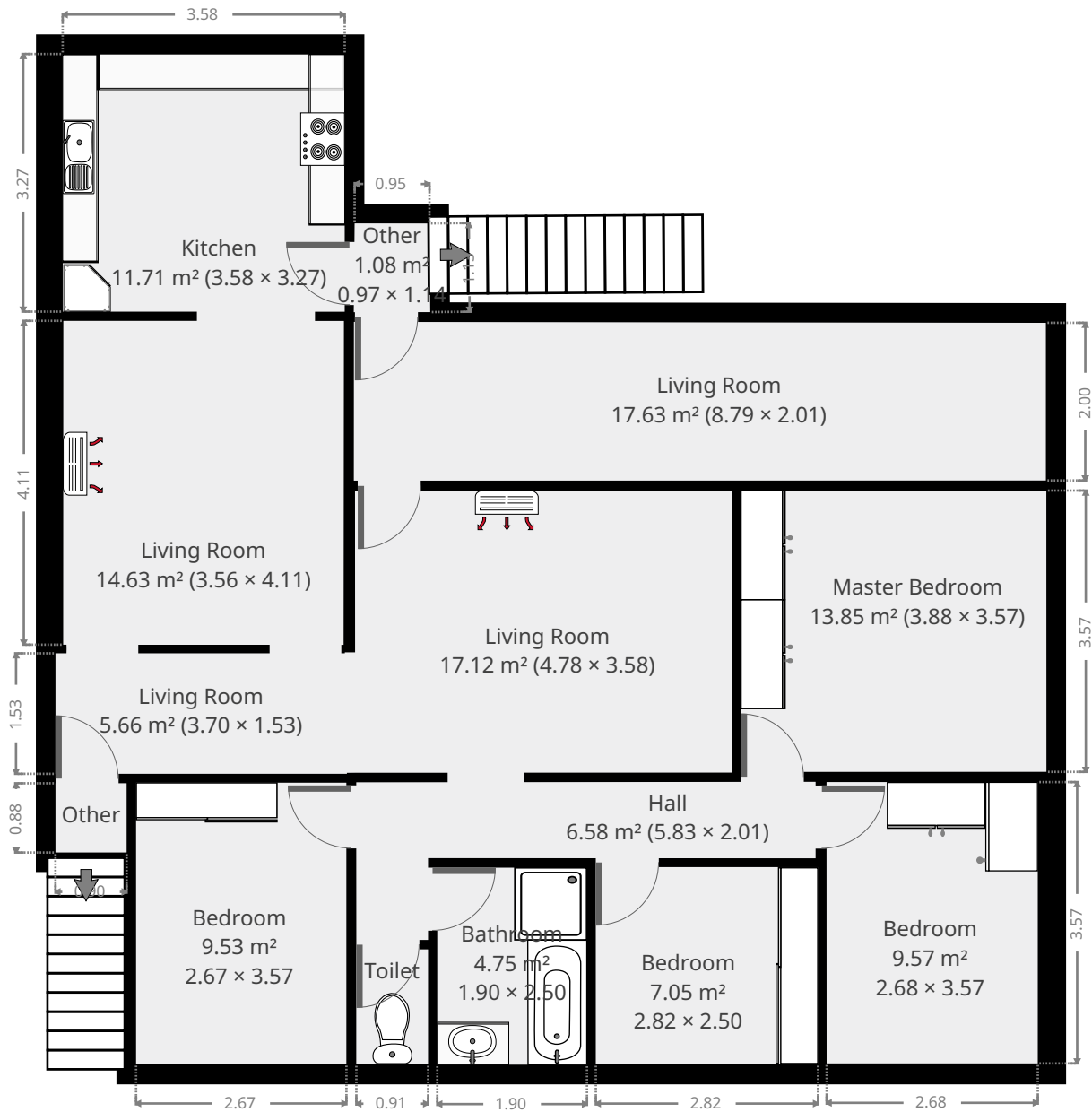
## Other

Width: 3.68 m  
Length: 4.43 m  
Area: 14.46 m<sup>2</sup>  
Perimeter: 16.15 m



# 334 Hobler Avenue

## 1st Floor



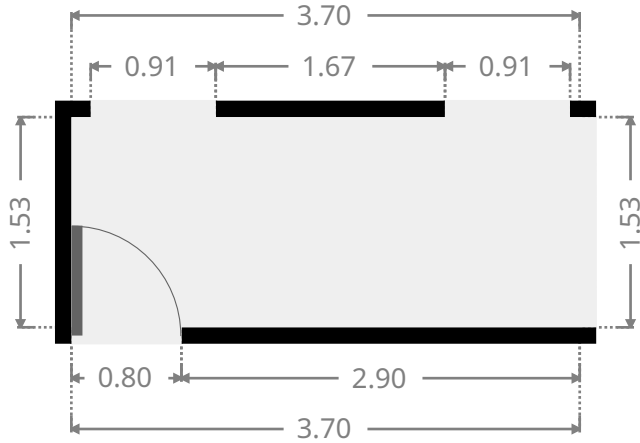
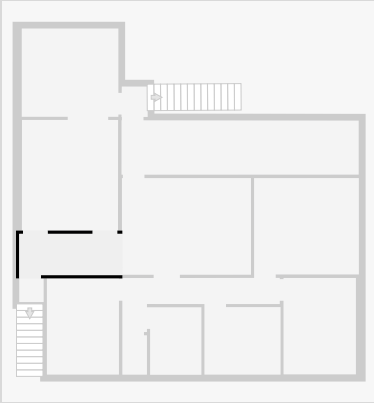
THIS FLOORPLAN IS PROVIDED WITHOUT WARRANTY OF ANY KIND. SENSOPIA DISCLAIMS ANY WARRANTY INCLUDING, WITHOUT LIMITATION, SATISFACTORY QUALITY OR ACCURACY OF DIMENSIONS.



# 334 Hobler Avenue

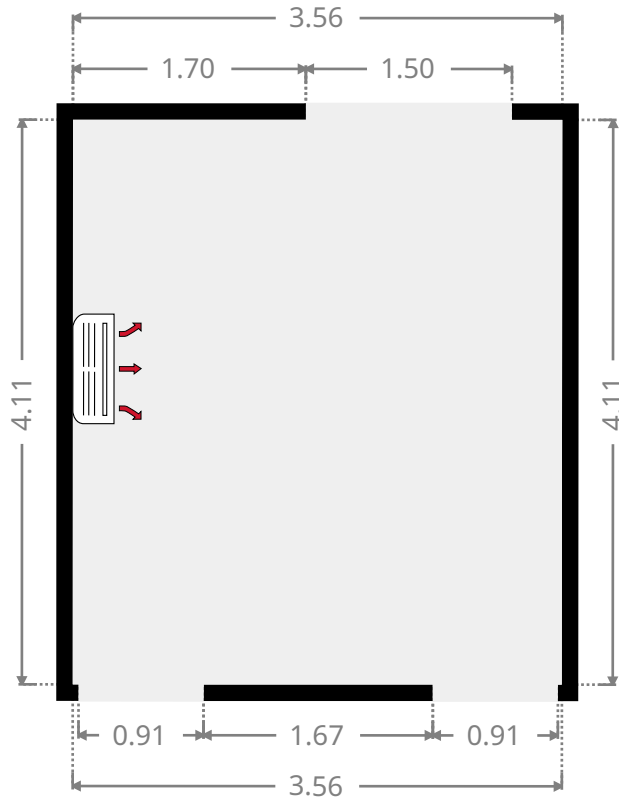
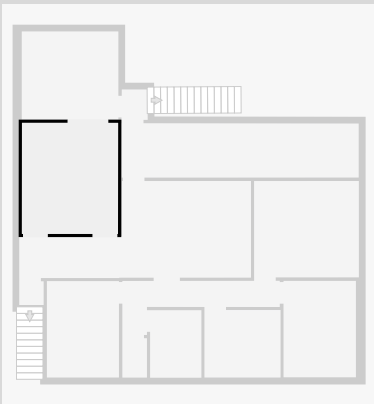
## Living Room

Width: 1.53 m  
 Length: 3.70 m  
 Area: 5.66 m<sup>2</sup>  
 Perimeter: 10.46 m

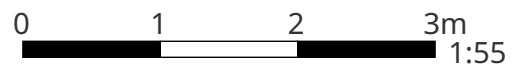


## Living Room

Width: 3.56 m  
 Length: 4.11 m  
 Area: 14.63 m<sup>2</sup>  
 Perimeter: 15.34 m



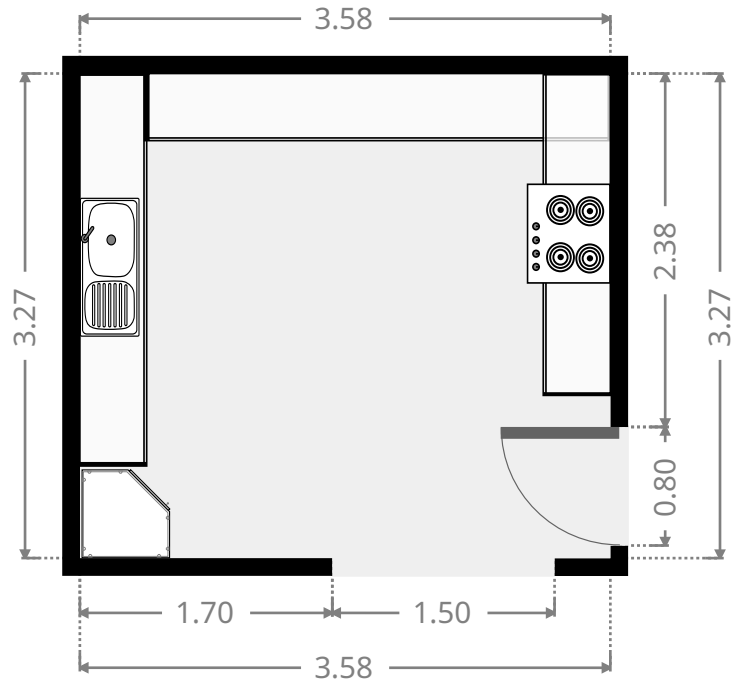
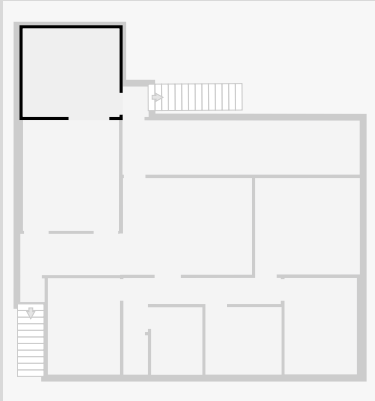
THIS FLOORPLAN IS PROVIDED WITHOUT WARRANTY OF ANY KIND. SENSOPIA DISCLAIMS ANY WARRANTY INCLUDING, WITHOUT LIMITATION, SATISFACTORY QUALITY OR ACCURACY OF DIMENSIONS.



# 334 Hobler Avenue

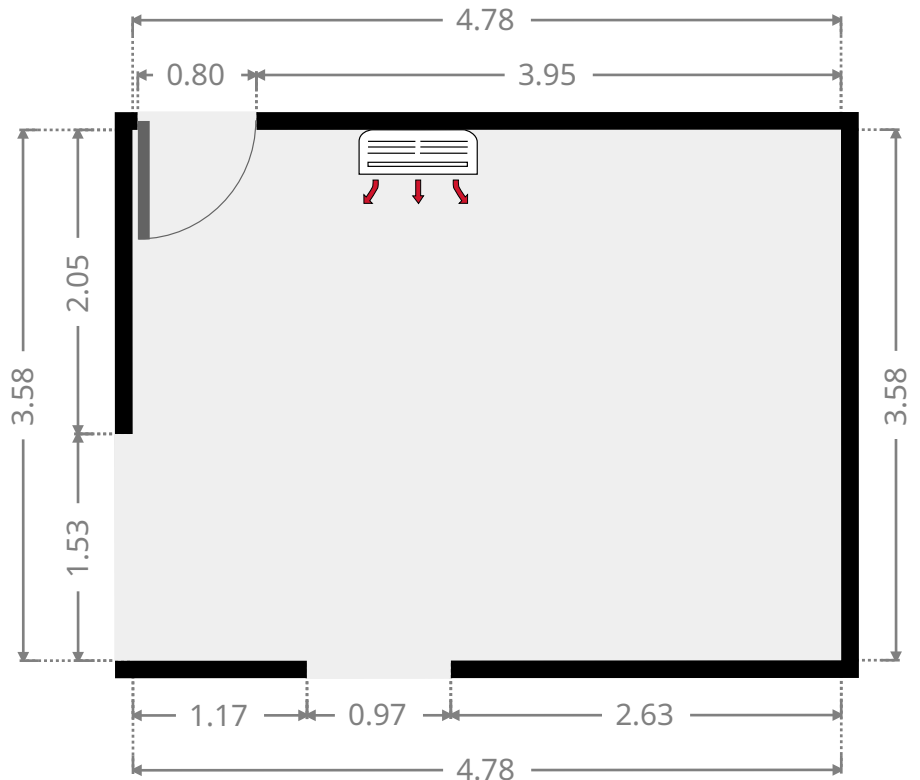
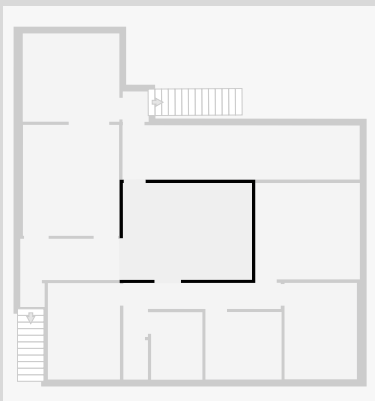
## Kitchen

Width: 3.27 m  
 Length: 3.58 m  
 Area: 11.71 m<sup>2</sup>  
 Perimeter: 13.70 m

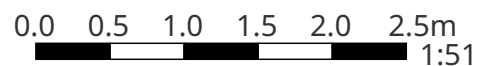


## Living Room

Width: 3.58 m  
 Length: 4.78 m  
 Area: 17.12 m<sup>2</sup>  
 Perimeter: 16.72 m



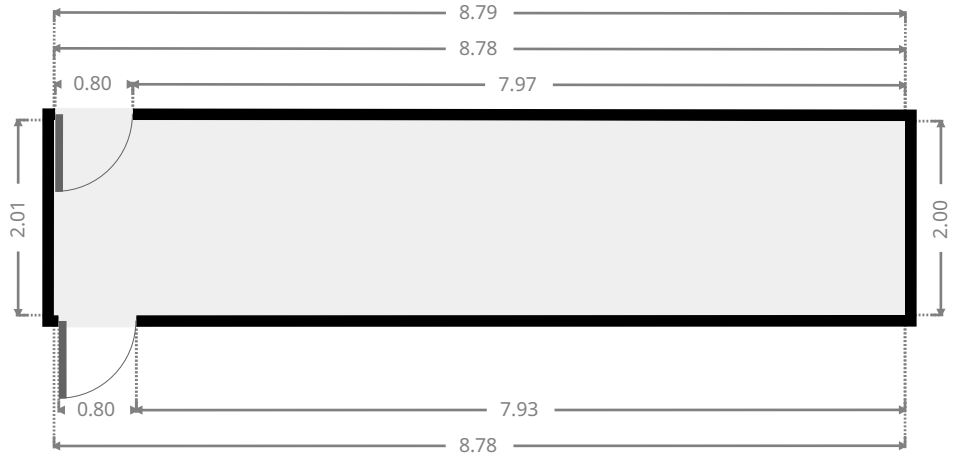
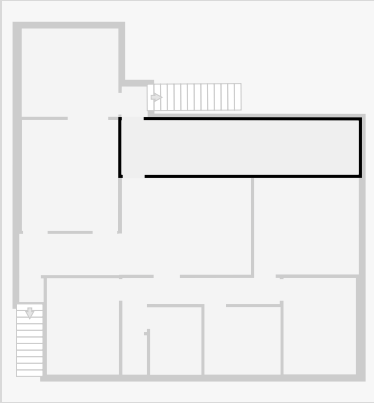
THIS FLOORPLAN IS PROVIDED WITHOUT WARRANTY OF ANY KIND. SENSOPIA DISCLAIMS ANY WARRANTY INCLUDING, WITHOUT LIMITATION, SATISFACTORY QUALITY OR ACCURACY OF DIMENSIONS.



# 334 Hobler Avenue

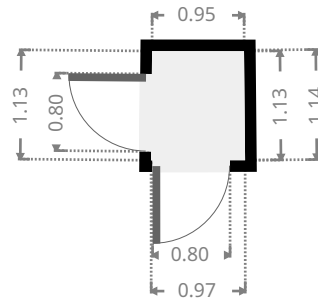
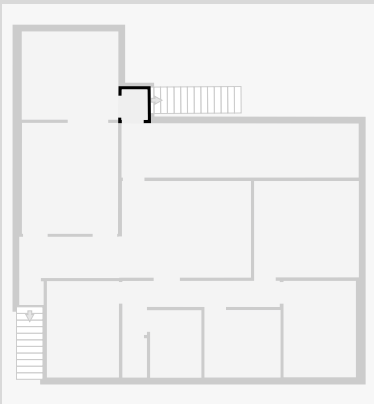
## Living Room

Width: 2.01 m  
Length: 8.79 m  
Area: 17.63 m<sup>2</sup>  
Perimeter: 21.58 m



## Other

Width: 0.97 m  
Length: 1.14 m  
Area: 1.08 m<sup>2</sup>  
Perimeter: 4.17 m

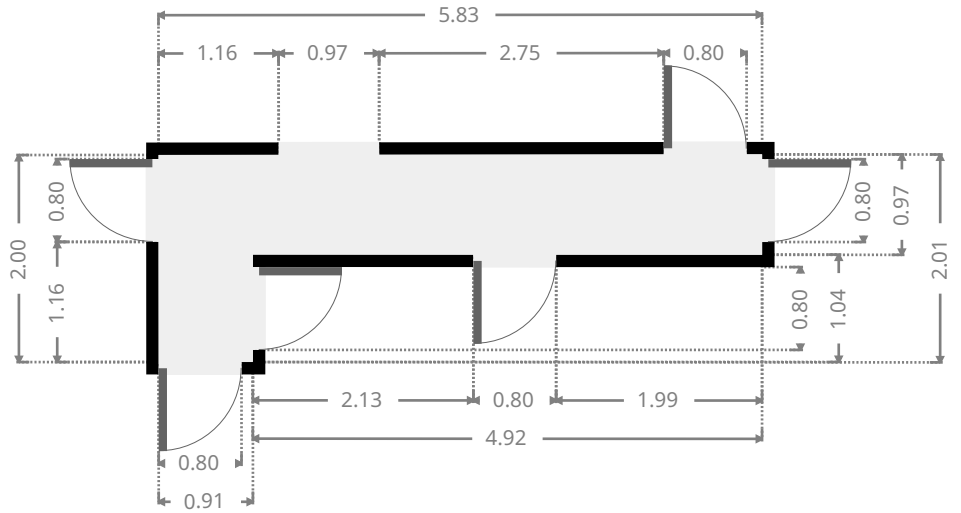
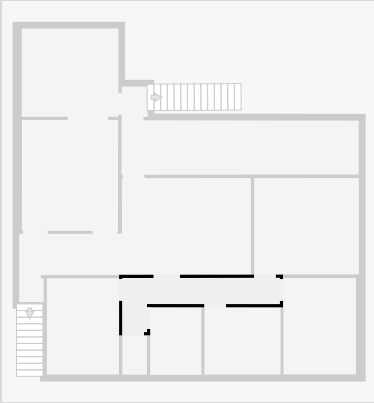




# 334 Hobler Avenue

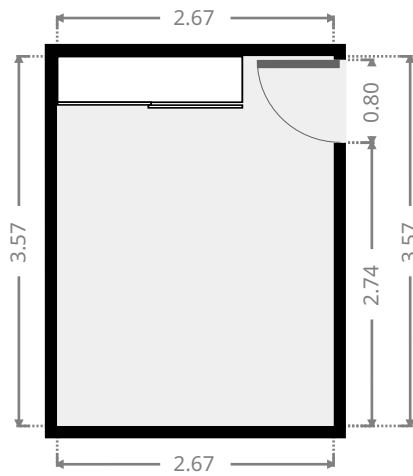
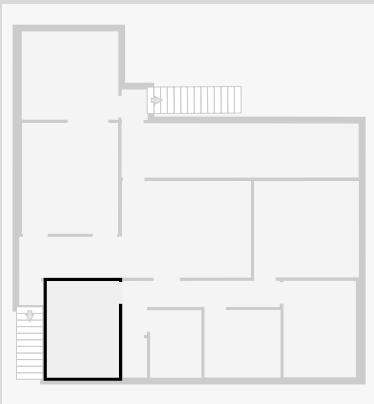
## Hall

Width: 2.01 m  
 Length: 5.83 m  
 Area: 6.58 m<sup>2</sup>  
 Perimeter: 15.67 m

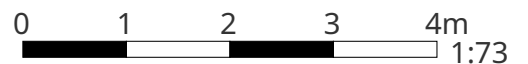


## Bedroom

Width: 2.67 m  
 Length: 3.57 m  
 Area: 9.53 m<sup>2</sup>  
 Perimeter: 12.48 m



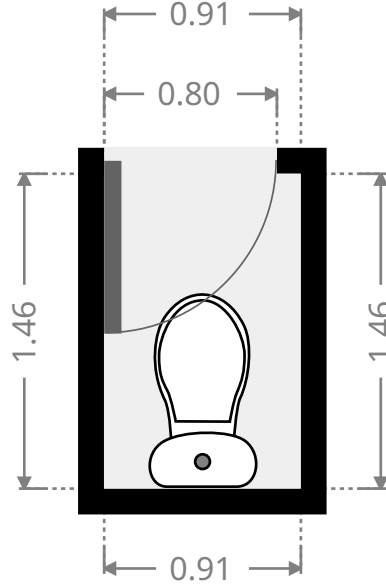
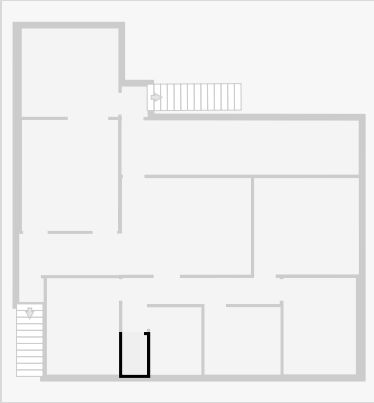
THIS FLOORPLAN IS PROVIDED WITHOUT WARRANTY OF ANY KIND. SENSOPIA DISCLAIMS ANY WARRANTY INCLUDING, WITHOUT LIMITATION, SATISFACTORY QUALITY OR ACCURACY OF DIMENSIONS.



# 334 Hobler Avenue

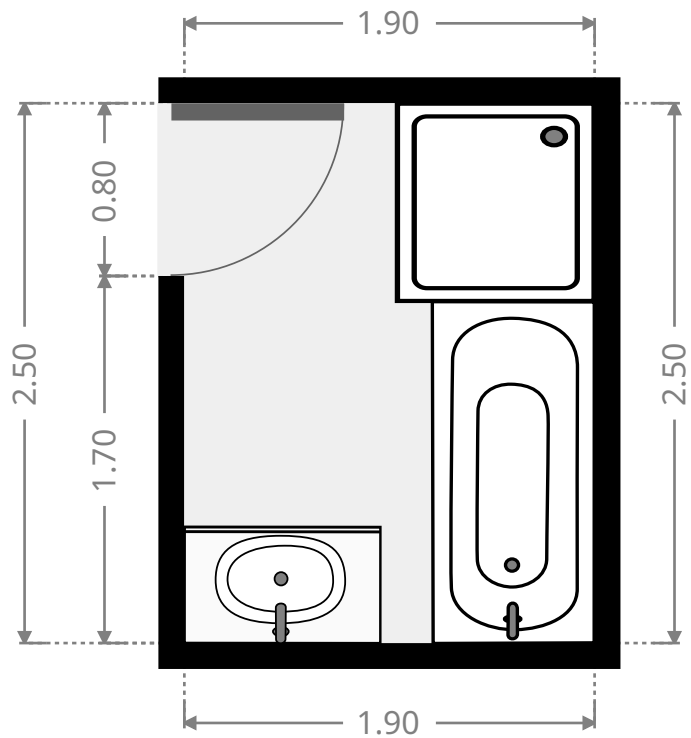
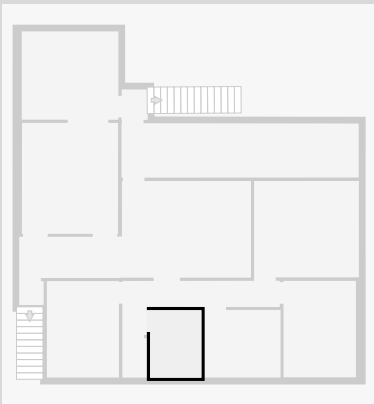
## Toilet / Half Bath

Width: 0.91 m  
Length: 1.46 m  
Area: 1.33 m<sup>2</sup>  
Perimeter: 4.74 m

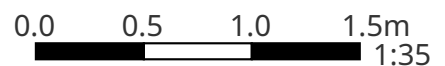


## Bathroom

Width: 1.90 m  
Length: 2.50 m  
Area: 4.75 m<sup>2</sup>  
Perimeter: 8.80 m



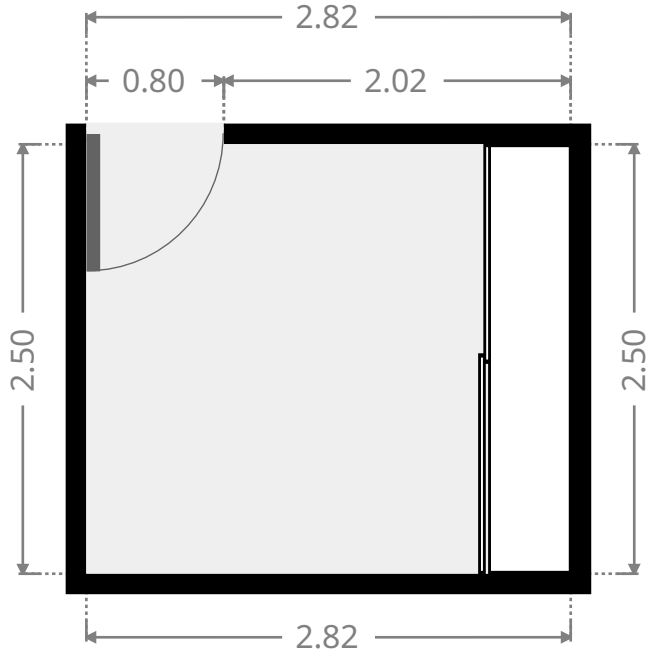
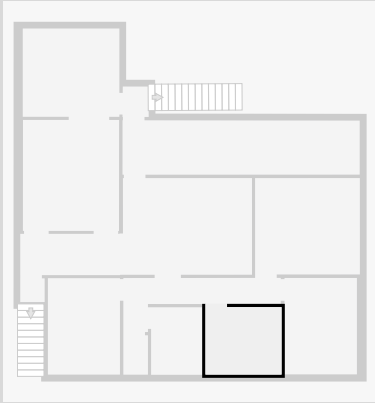
THIS FLOORPLAN IS PROVIDED WITHOUT WARRANTY OF ANY KIND. SENSOPIA DISCLAIMS ANY WARRANTY INCLUDING, WITHOUT LIMITATION, SATISFACTORY QUALITY OR ACCURACY OF DIMENSIONS.



# 334 Hobler Avenue

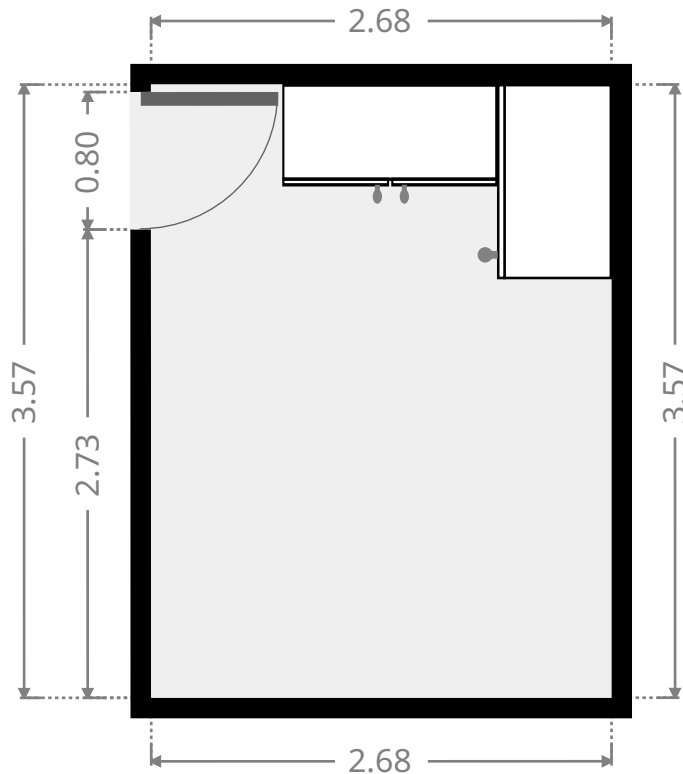
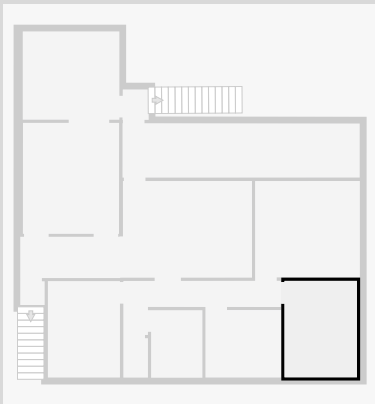
## Bedroom

Width: 2.50 m  
 Length: 2.82 m  
 Area: 7.05 m<sup>2</sup>  
 Perimeter: 10.64 m

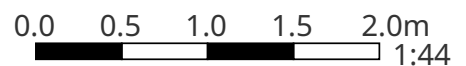


## Bedroom

Width: 2.68 m  
 Length: 3.57 m  
 Area: 9.57 m<sup>2</sup>  
 Perimeter: 12.50 m



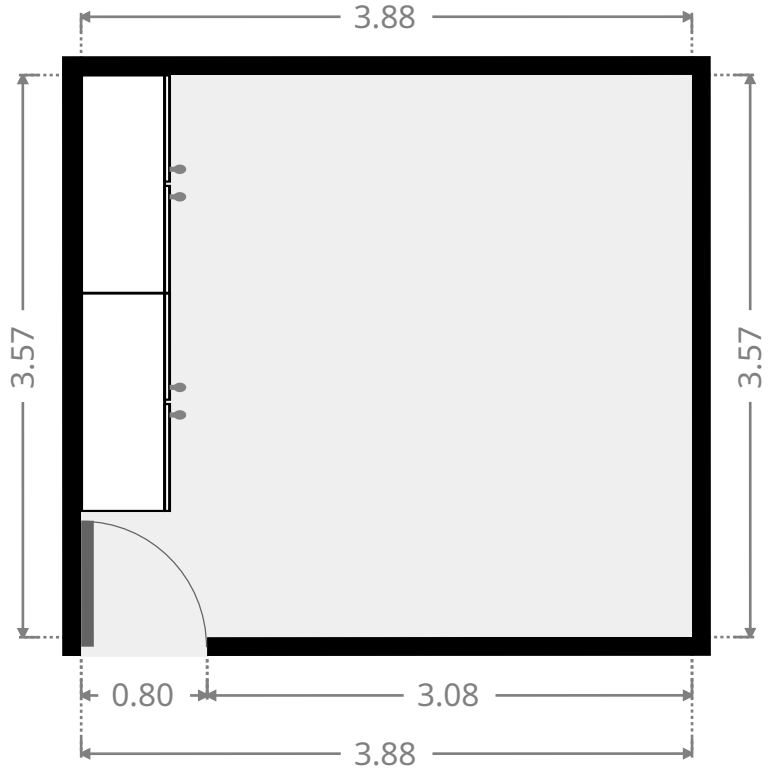
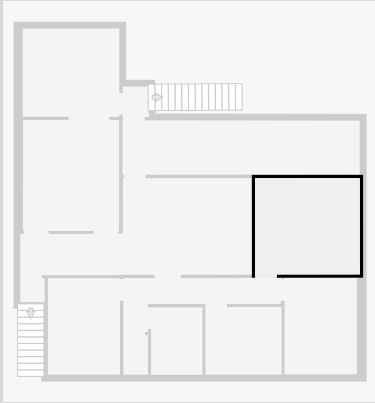
THIS FLOORPLAN IS PROVIDED WITHOUT WARRANTY OF ANY KIND. SENSOPIA DISCLAIMS ANY WARRANTY INCLUDING, WITHOUT LIMITATION, SATISFACTORY QUALITY OR ACCURACY OF DIMENSIONS.



# 334 Hobler Avenue

## Master Bedroom

Width: 3.57 m  
Length: 3.88 m  
Area: 13.85 m<sup>2</sup>  
Perimeter: 14.90 m



## Other

Width: 0.88 m  
Length: 0.90 m  
Area: 0.79 m<sup>2</sup>  
Perimeter: 3.56 m

