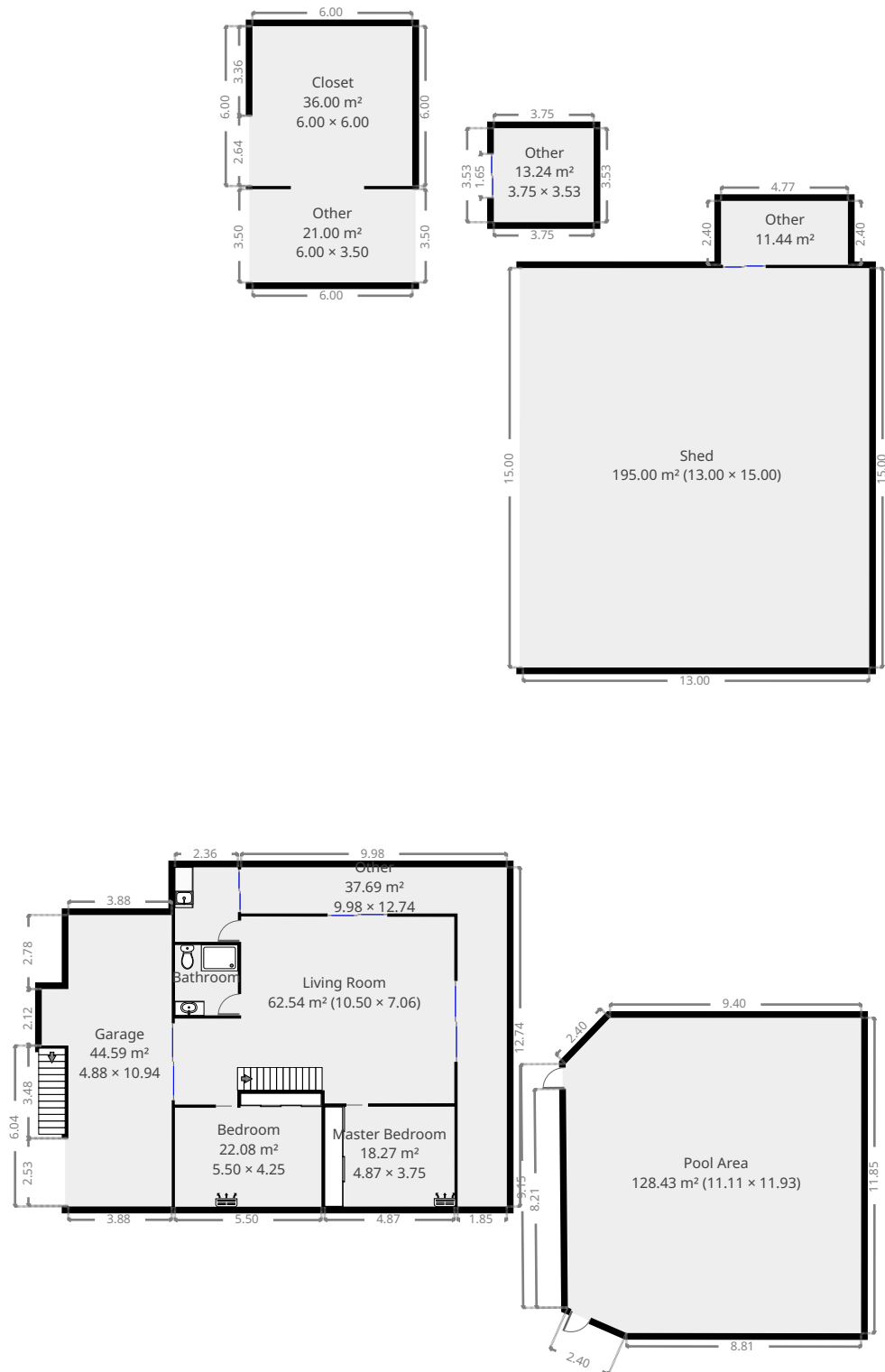


324 Greenlake Road

Ground Floor



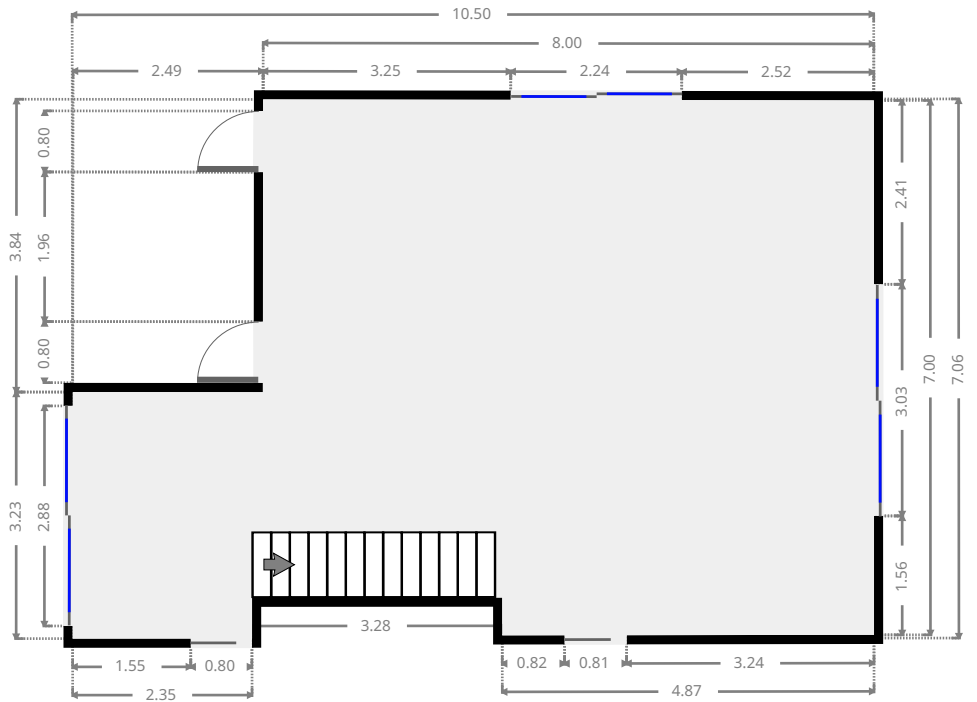
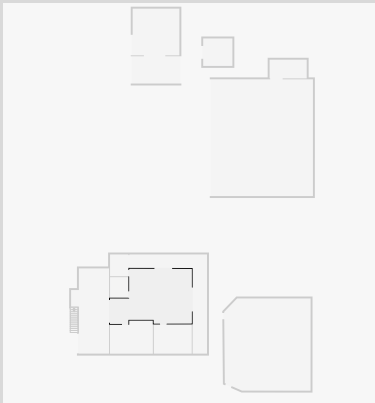
THIS FLOORPLAN IS PROVIDED WITHOUT WARRANTY OF ANY KIND. SENSOPIA DISCLAIMS ANY WARRANTY INCLUDING, WITHOUT LIMITATION, SATISFACTORY QUALITY OR ACCURACY OF DIMENSIONS.



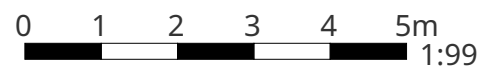
324 Greenlake Road

Living Room

Width: 7.06 m
Length: 10.50 m
Area: 62.54 m²
Perimeter: 36.08 m



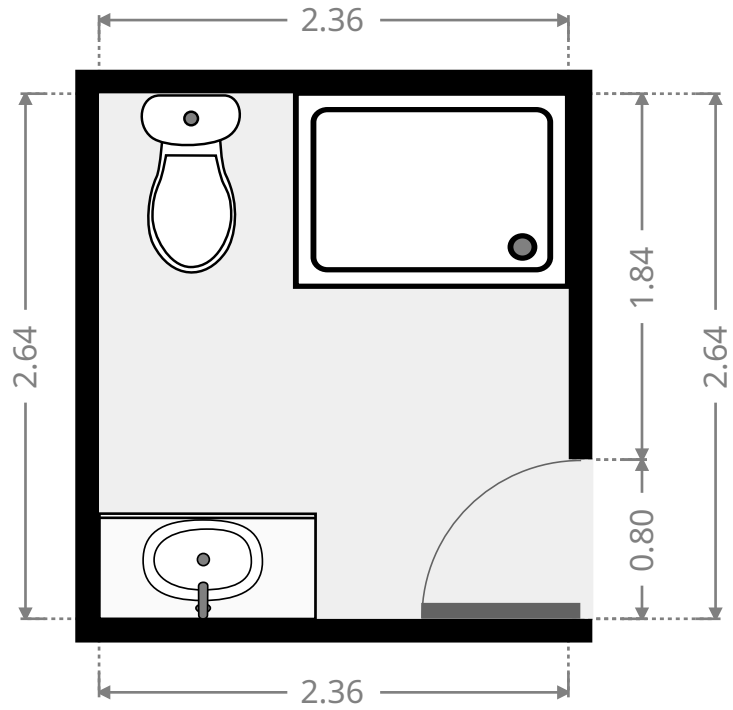
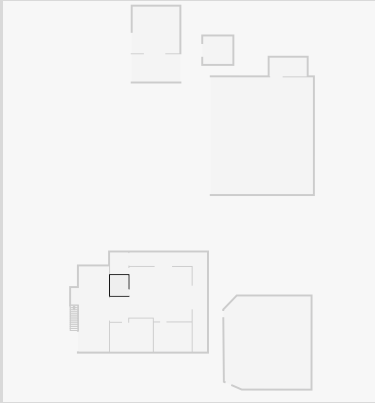
THIS FLOORPLAN IS PROVIDED WITHOUT WARRANTY OF ANY KIND. SENSOPIA DISCLAIMS ANY WARRANTY INCLUDING, WITHOUT LIMITATION, SATISFACTORY QUALITY OR ACCURACY OF DIMENSIONS.



324 Greenlake Road

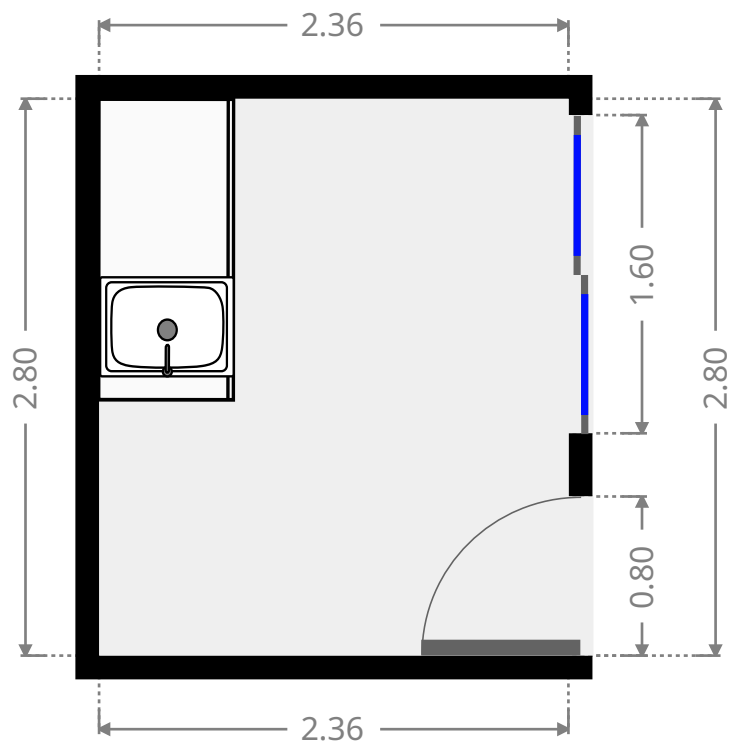
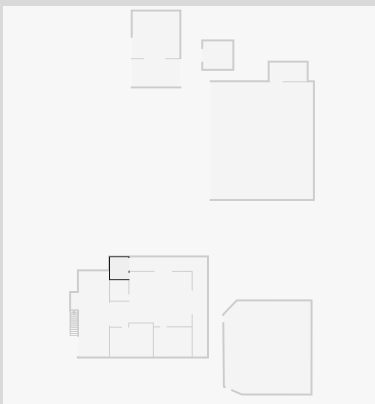
Bathroom

Width: 2.36 m
Length: 2.64 m
Area: 6.23 m²
Perimeter: 10.00 m

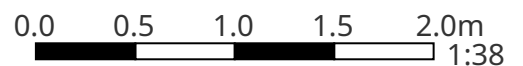


Laundry Room

Width: 2.36 m
Length: 2.80 m
Area: 6.61 m²
Perimeter: 10.32 m



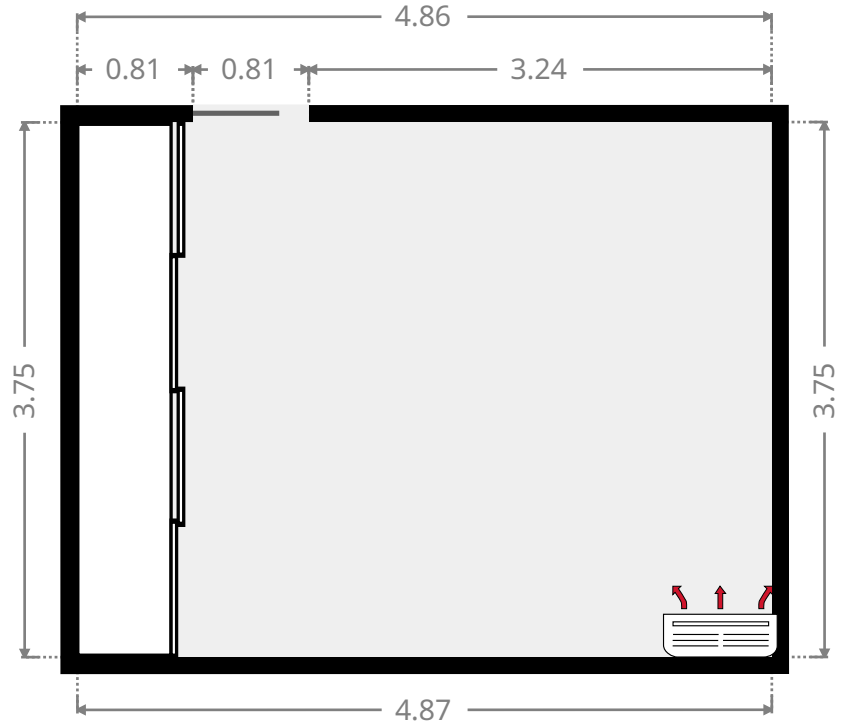
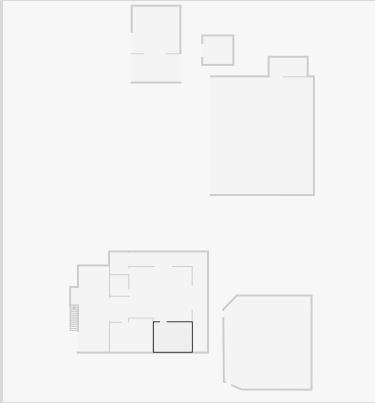
THIS FLOORPLAN IS PROVIDED WITHOUT WARRANTY OF ANY KIND. SENSOPIA DISCLAIMS ANY WARRANTY INCLUDING, WITHOUT LIMITATION, SATISFACTORY QUALITY OR ACCURACY OF DIMENSIONS.



324 Greenlake Road

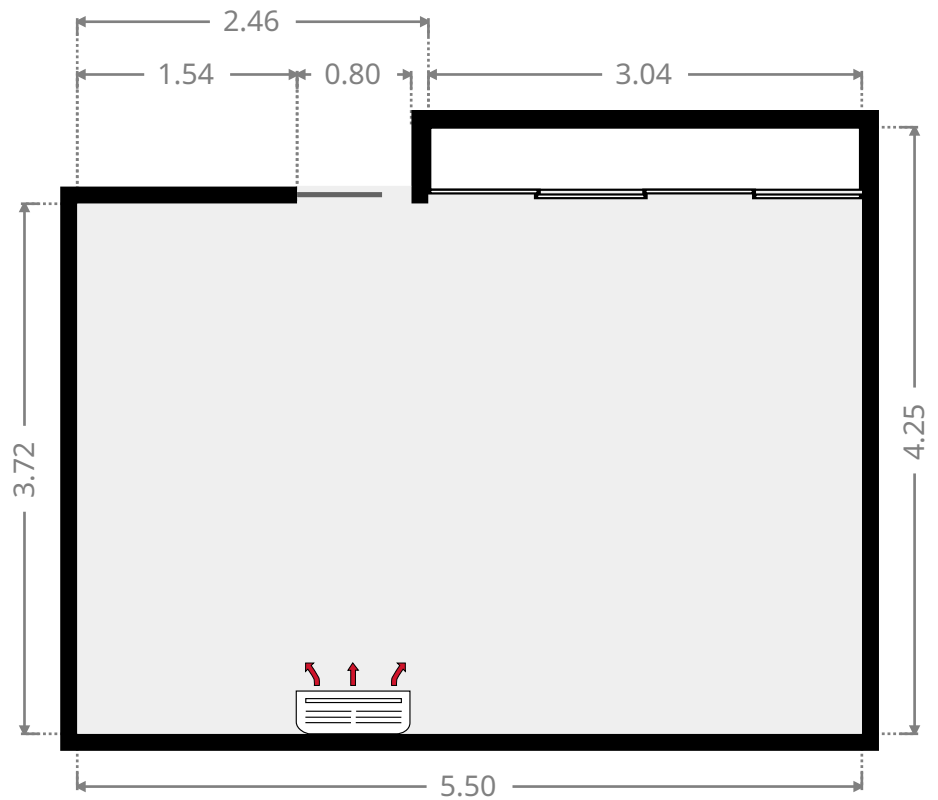
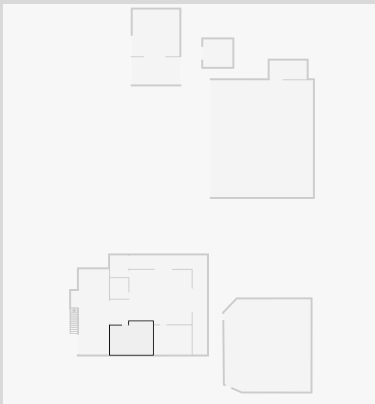
Master Bedroom

Width: 3.75 m
Length: 4.87 m
Area: 18.27 m²
Perimeter: 17.24 m

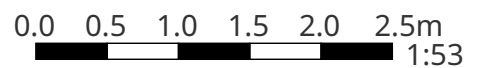


Bedroom

Width: 4.25 m
Length: 5.50 m
Area: 22.08 m²
Perimeter: 19.51 m



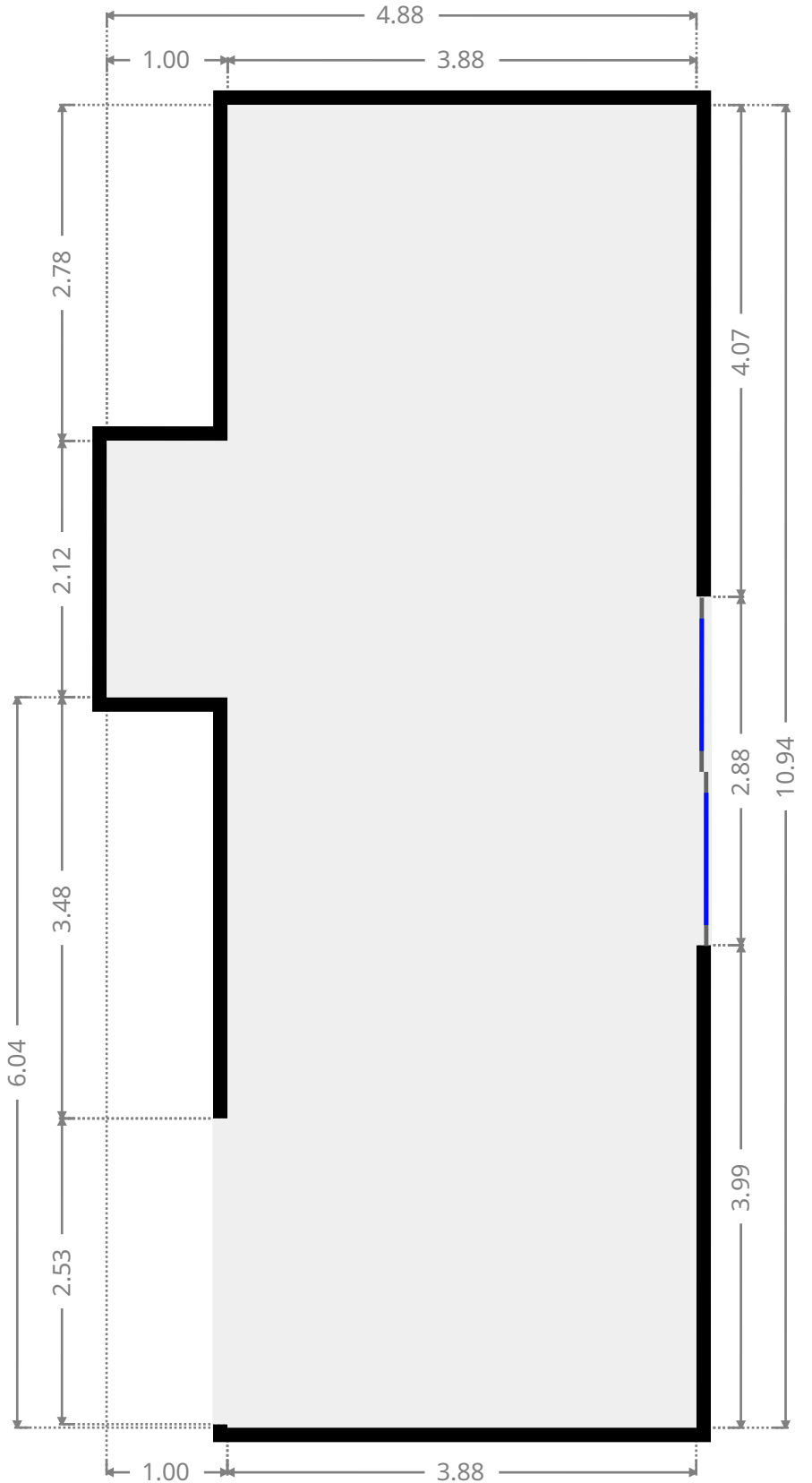
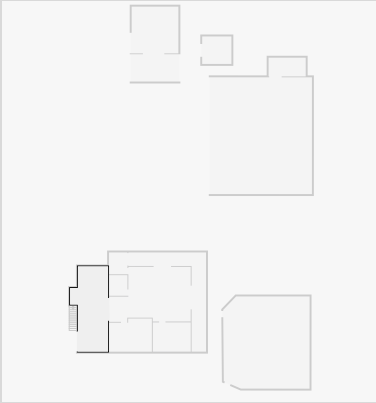
THIS FLOORPLAN IS PROVIDED WITHOUT WARRANTY OF ANY KIND. SENSOPIA DISCLAIMS ANY WARRANTY INCLUDING, WITHOUT LIMITATION, SATISFACTORY QUALITY OR ACCURACY OF DIMENSIONS.



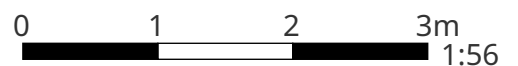
324 Greenlake Road

Garage

Width: 4.88 m
Length: 10.94 m
Area: 44.59 m²
Perimeter: 31.65 m



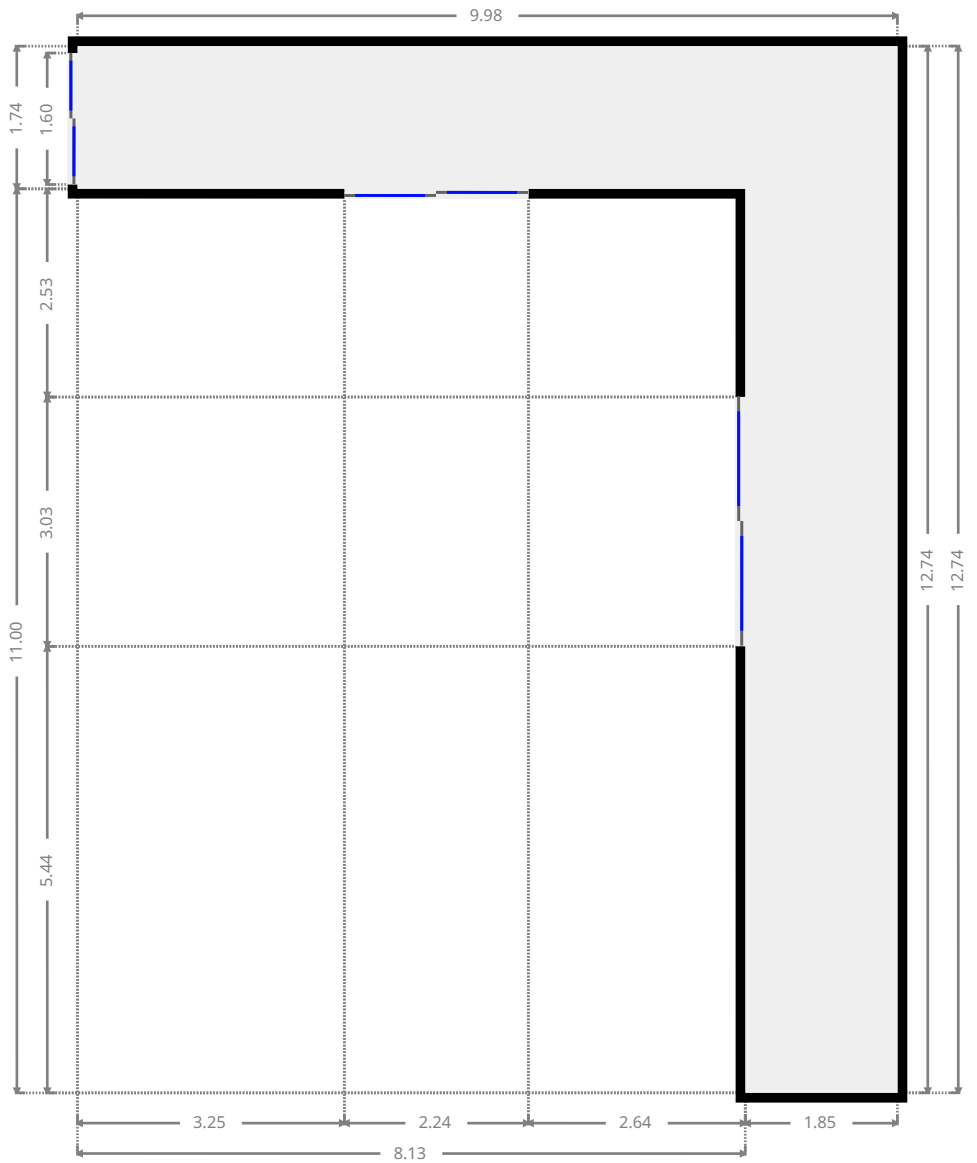
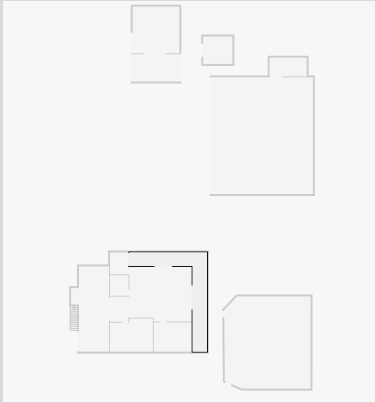
THIS FLOORPLAN IS PROVIDED WITHOUT WARRANTY OF ANY KIND. SENSOPIA DISCLAIMS ANY WARRANTY INCLUDING, WITHOUT LIMITATION, SATISFACTORY QUALITY OR ACCURACY OF DIMENSIONS.



324 Greenlake Road

Other

Width: 9.98 m
Length: 12.74 m
Area: 37.69 m²
Perimeter: 45.44 m



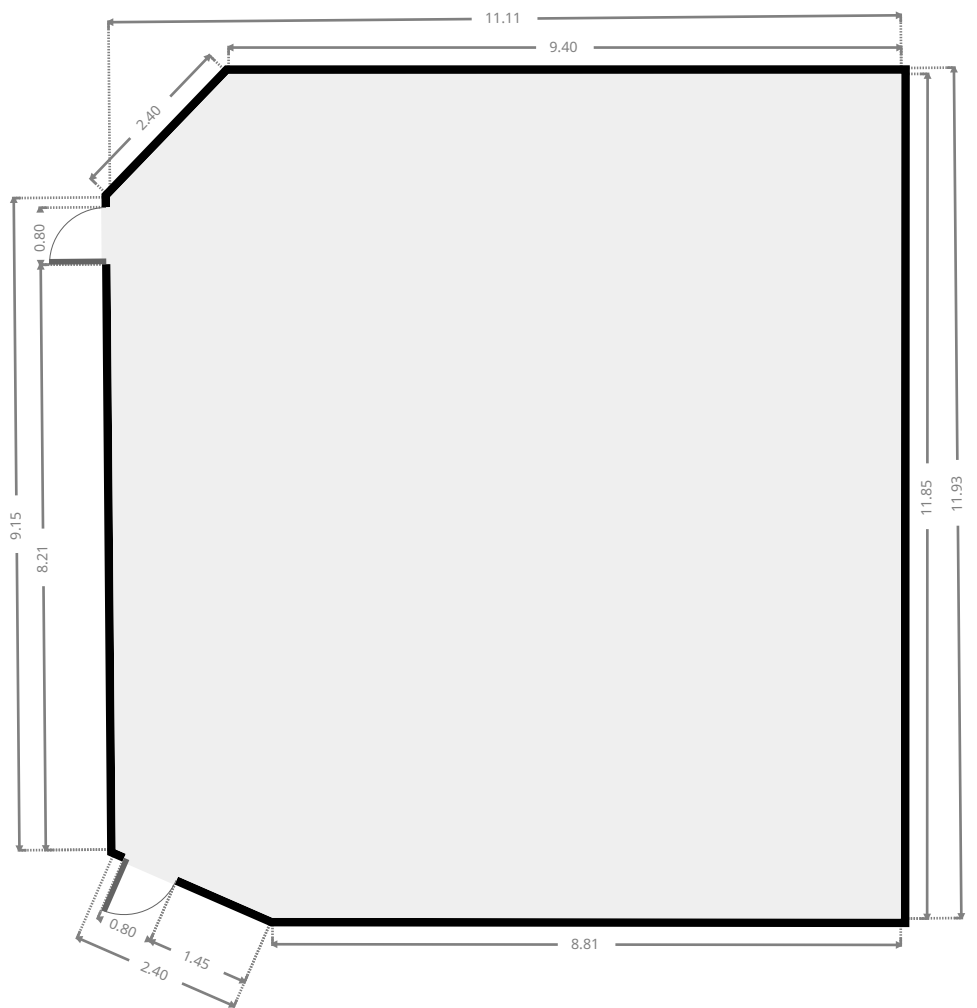
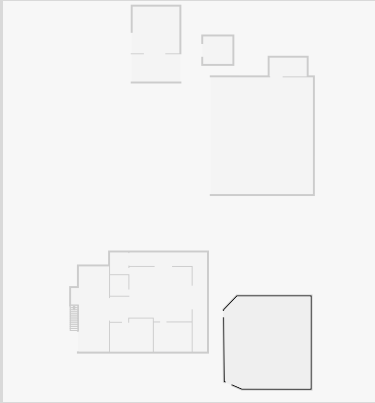
THIS FLOORPLAN IS PROVIDED WITHOUT WARRANTY OF ANY KIND. SENSOPIA DISCLAIMS ANY WARRANTY INCLUDING, WITHOUT LIMITATION, SATISFACTORY QUALITY OR ACCURACY OF DIMENSIONS.



324 Greenlake Road

Pool Area

Width: 11.11 m
Length: 11.93 m
Area: 128.43 m²
Perimeter: 44.04 m



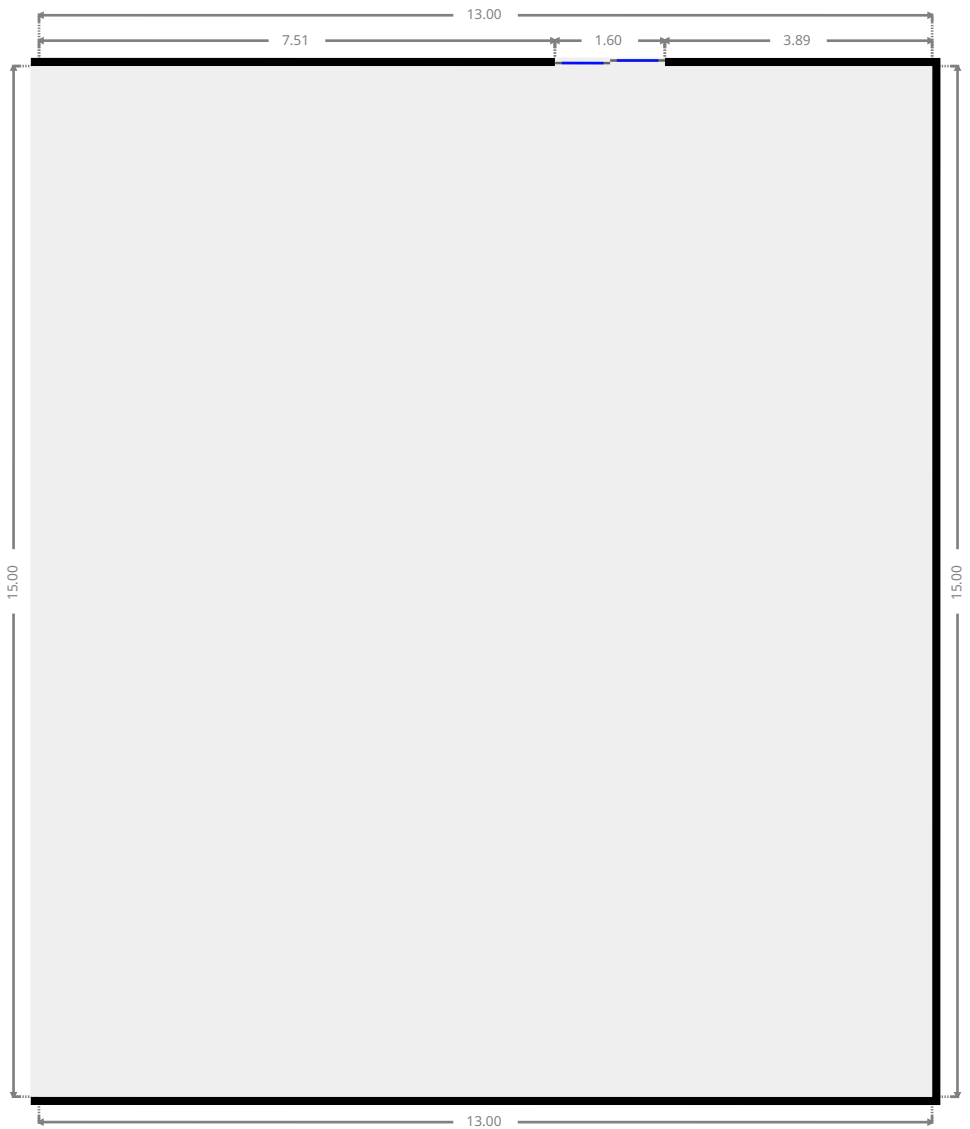
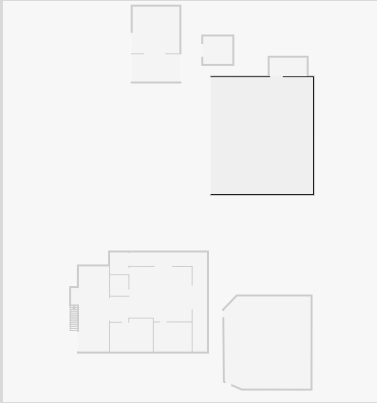
THIS FLOORPLAN IS PROVIDED WITHOUT WARRANTY OF ANY KIND. SENSOPIA DISCLAIMS ANY WARRANTY INCLUDING, WITHOUT LIMITATION, SATISFACTORY QUALITY OR ACCURACY OF DIMENSIONS.



324 Greenlake Road

Shed

Width: 13.00 m
Length: 15.00 m
Area: 195.00 m²
Perimeter: 56.00 m



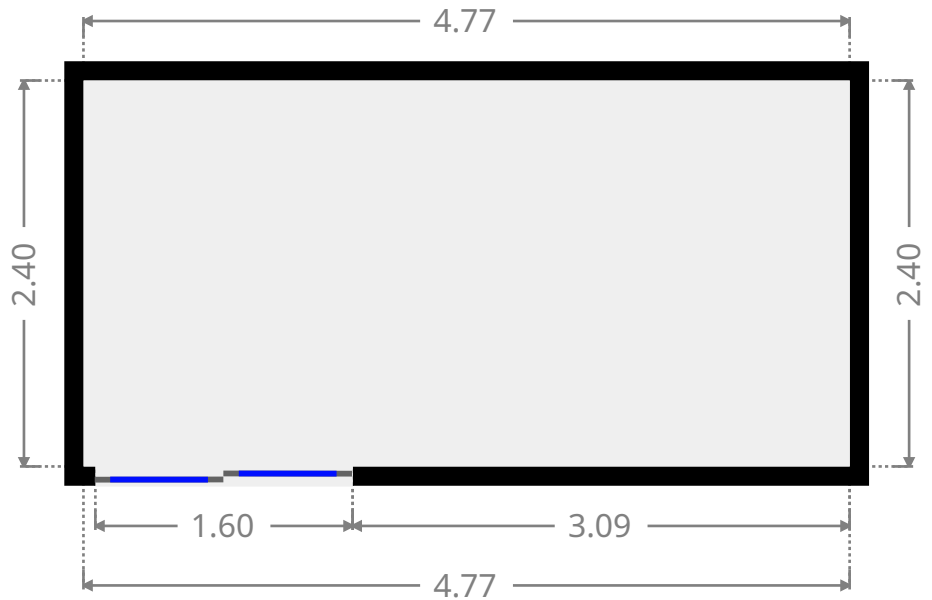
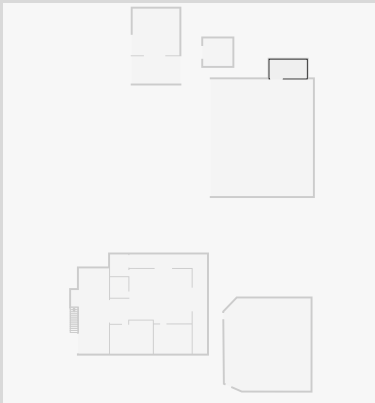
THIS FLOORPLAN IS PROVIDED WITHOUT WARRANTY OF ANY KIND. SENSOPIA DISCLAIMS ANY WARRANTY INCLUDING, WITHOUT LIMITATION, SATISFACTORY QUALITY OR ACCURACY OF DIMENSIONS.



324 Greenlake Road

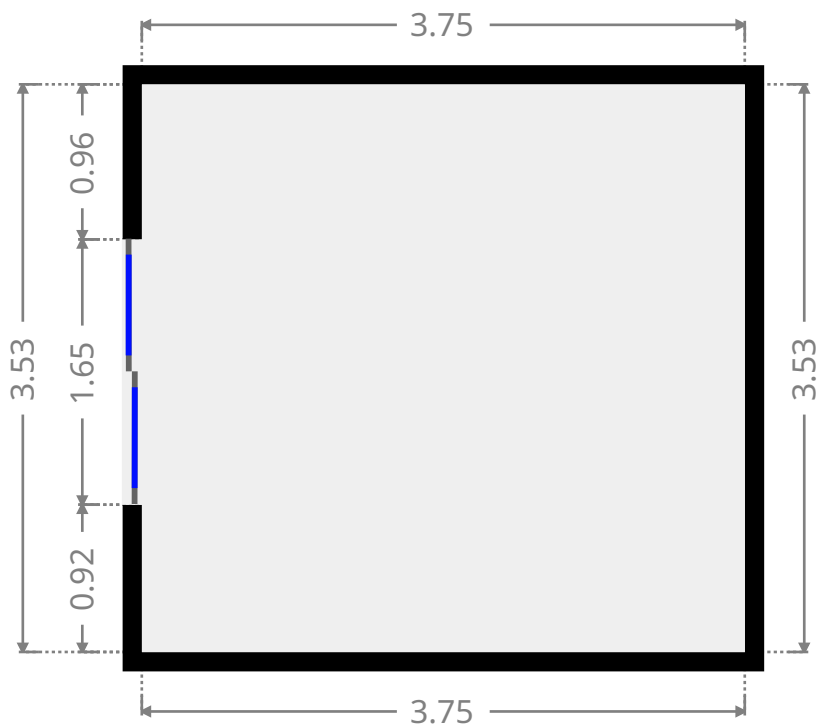
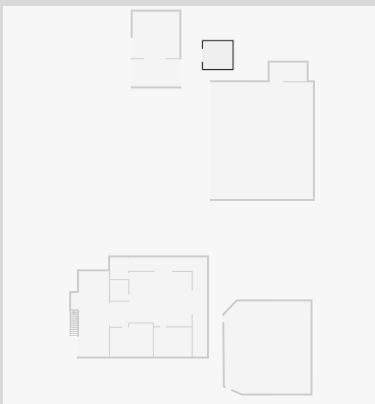
Other

Width: 2.40 m
Length: 4.77 m
Area: 11.44 m²
Perimeter: 14.33 m

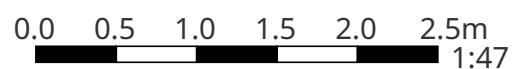


Other

Width: 3.53 m
Length: 3.75 m
Area: 13.24 m²
Perimeter: 14.56 m



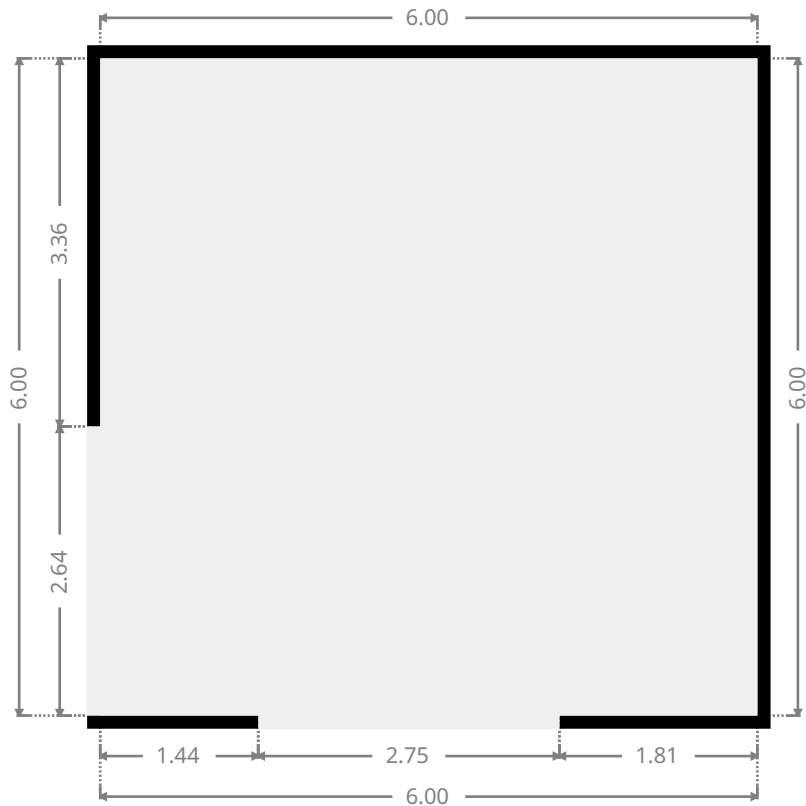
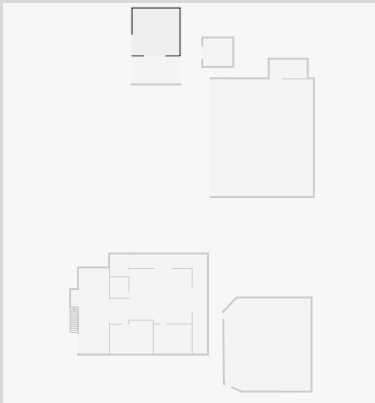
THIS FLOORPLAN IS PROVIDED WITHOUT WARRANTY OF ANY KIND. SENSOPIA DISCLAIMS ANY WARRANTY INCLUDING, WITHOUT LIMITATION, SATISFACTORY QUALITY OR ACCURACY OF DIMENSIONS.



324 Greenlake Road

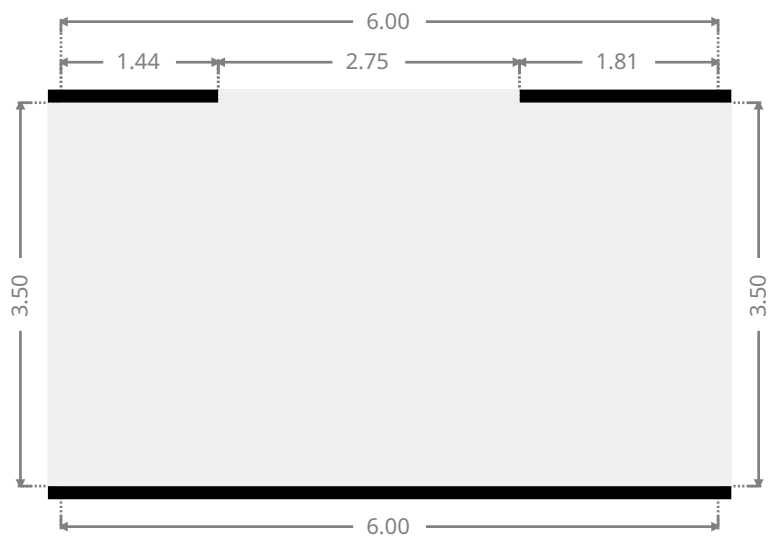
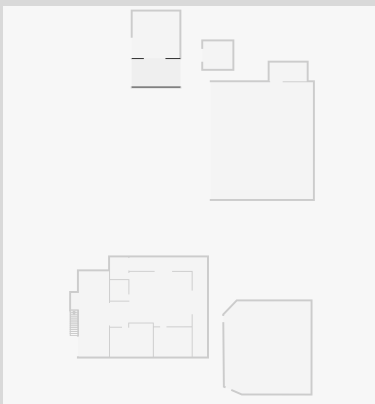
Closet

Width: 6.00 m
Length: 6.00 m
Area: 36.00 m²
Perimeter: 24.00 m



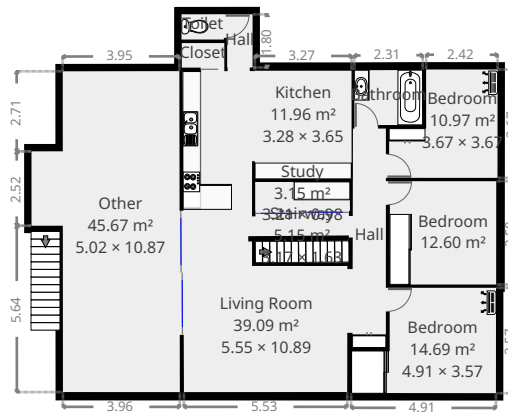
Other

Width: 3.50 m
Length: 6.00 m
Area: 21.00 m²
Perimeter: 19.00 m

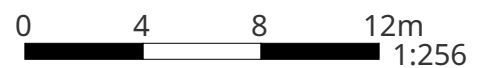


324 Greenlake Road

1st Floor



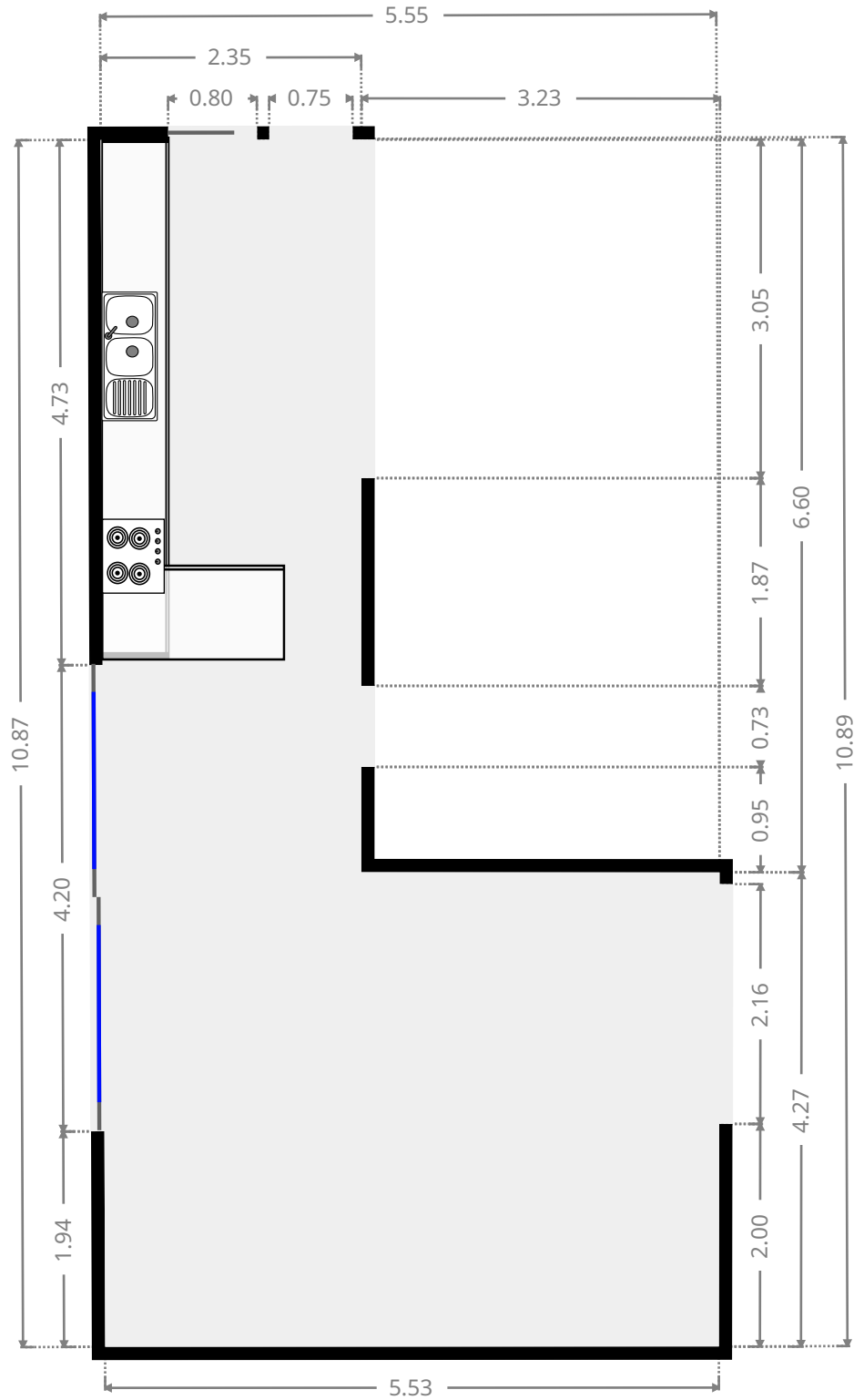
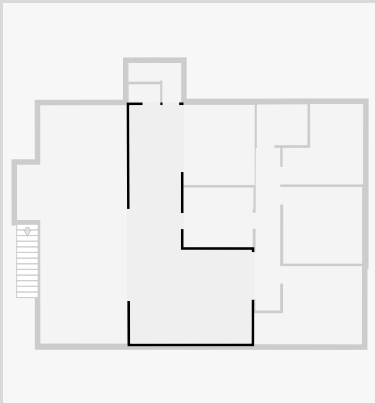
THIS FLOORPLAN IS PROVIDED WITHOUT WARRANTY OF ANY KIND. SENSOPIA DISCLAIMS ANY WARRANTY INCLUDING, WITHOUT LIMITATION, SATISFACTORY QUALITY OR ACCURACY OF DIMENSIONS.



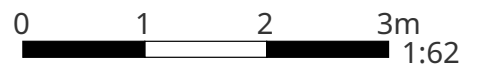
324 Greenlake Road

Living Room

Width: 5.55 m
 Length: 10.89 m
 Area: 39.09 m²
 Perimeter: 32.85 m



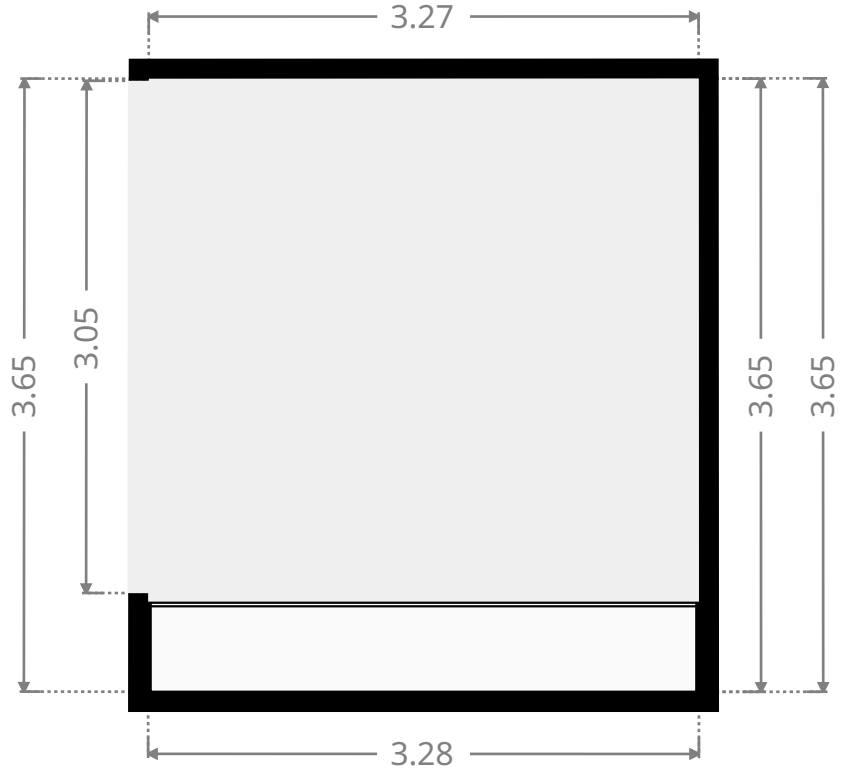
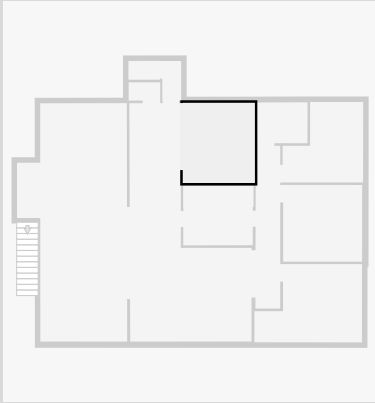
THIS FLOORPLAN IS PROVIDED WITHOUT WARRANTY OF ANY KIND. SENSOPIA DISCLAIMS ANY WARRANTY INCLUDING, WITHOUT LIMITATION, SATISFACTORY QUALITY OR ACCURACY OF DIMENSIONS.



324 Greenlake Road

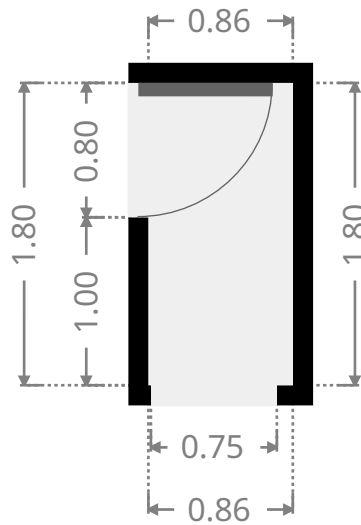
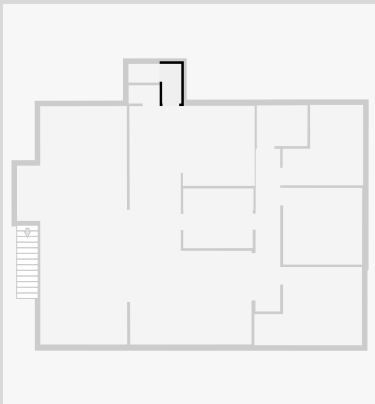
Kitchen

Width: 3.28 m
Length: 3.65 m
Area: 11.96 m²
Perimeter: 13.85 m

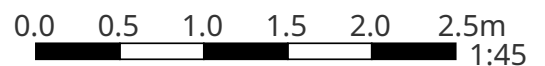


Hall

Width: 0.86 m
Length: 1.80 m
Area: 1.55 m²
Perimeter: 5.32 m



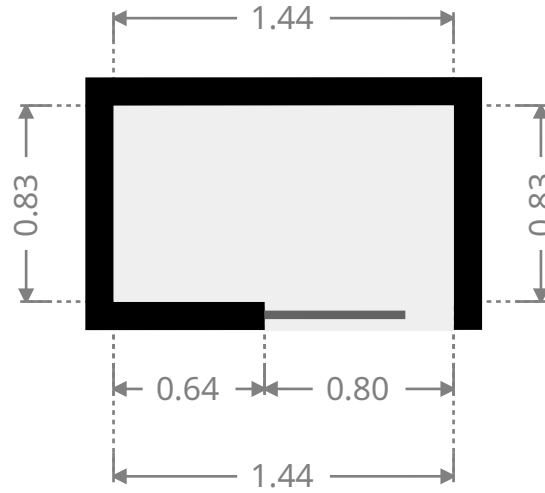
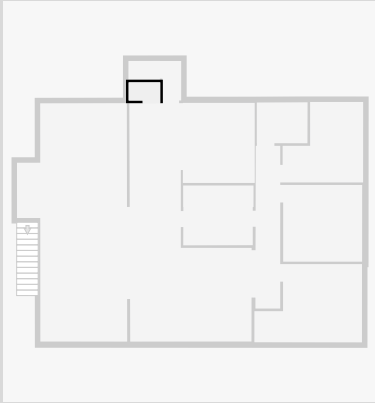
THIS FLOORPLAN IS PROVIDED WITHOUT WARRANTY OF ANY KIND. SENSOPIA DISCLAIMS ANY WARRANTY INCLUDING, WITHOUT LIMITATION, SATISFACTORY QUALITY OR ACCURACY OF DIMENSIONS.



324 Greenlake Road

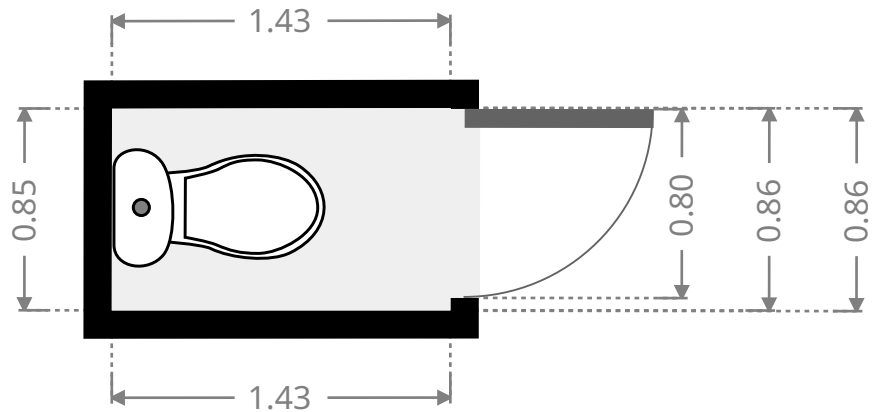
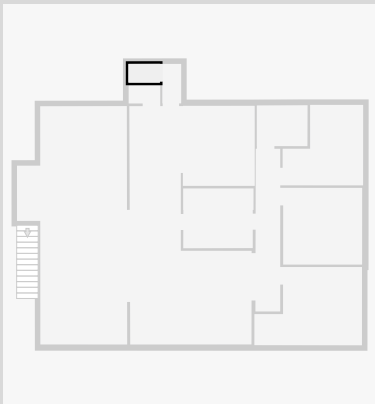
Closet

Width: 0.83 m
Length: 1.44 m
Area: 1.20 m²
Perimeter: 4.54 m



Toilet / Half Bath

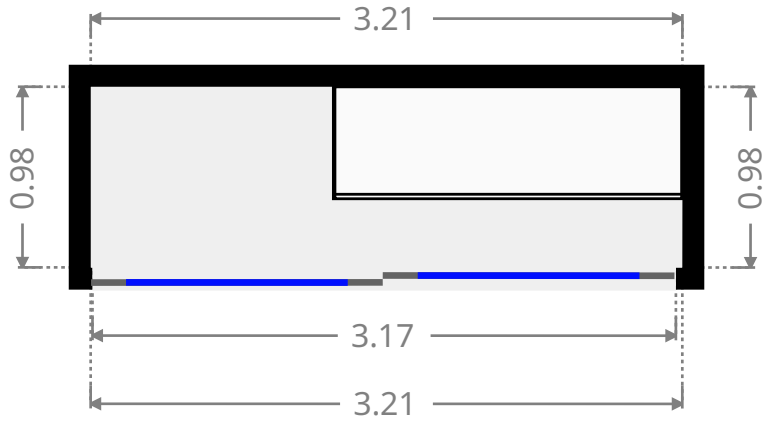
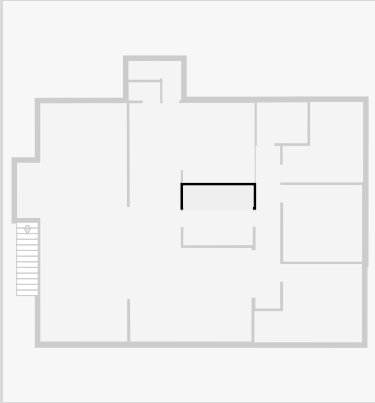
Width: 0.86 m
Length: 1.43 m
Area: 1.23 m²
Perimeter: 4.58 m



324 Greenlake Road

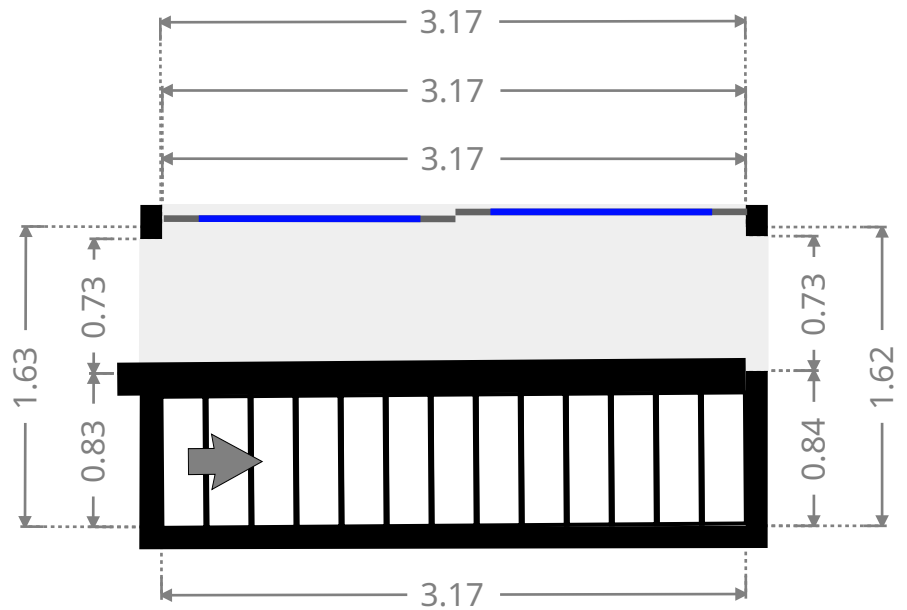
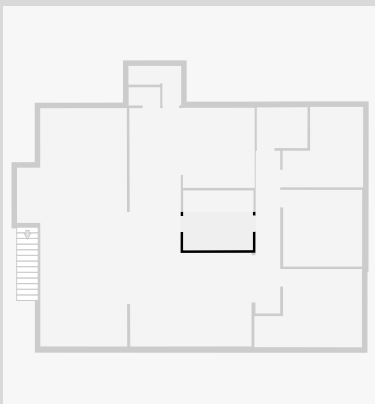
Study

Width: 0.98 m
Length: 3.21 m
Area: 3.15 m²
Perimeter: 8.38 m

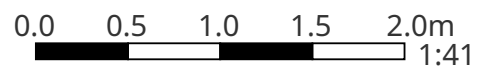


Stairway

Width: 1.63 m
Length: 3.17 m
Area: 5.15 m²
Perimeter: 9.58 m



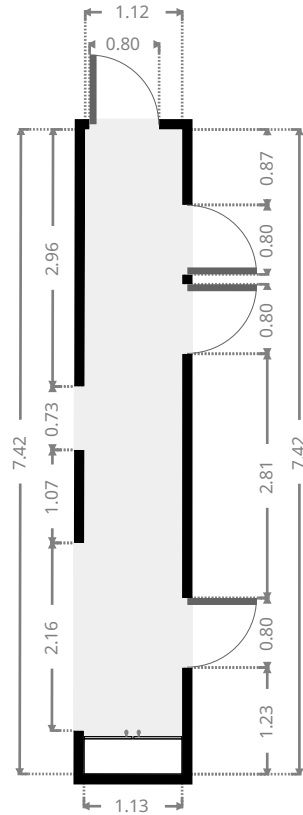
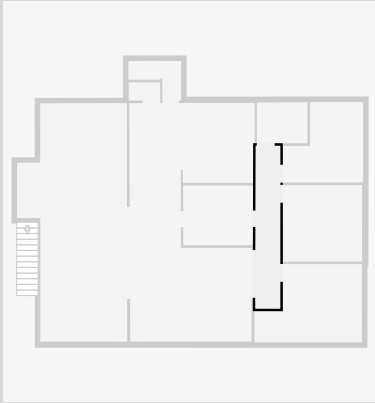
THIS FLOORPLAN IS PROVIDED WITHOUT WARRANTY OF ANY KIND. SENSOPIA DISCLAIMS ANY WARRANTY INCLUDING, WITHOUT LIMITATION, SATISFACTORY QUALITY OR ACCURACY OF DIMENSIONS.



324 Greenlake Road

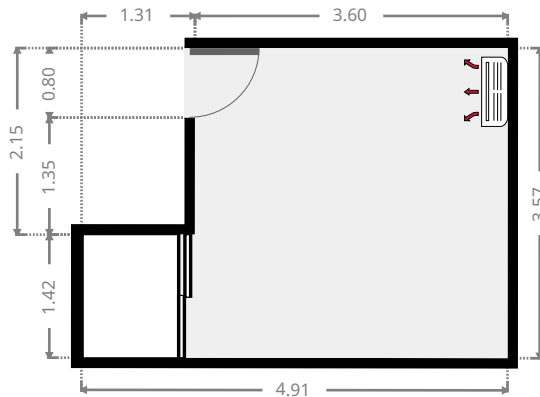
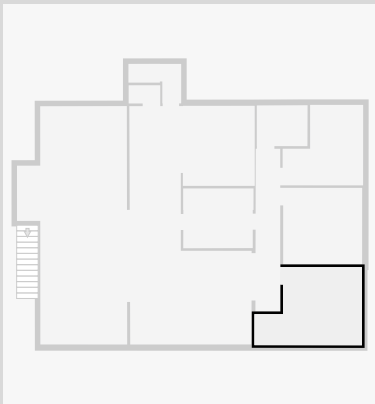
Hall

Width: 1.13 m
 Length: 7.42 m
 Area: 8.33 m²
 Perimeter: 17.09 m



Bedroom

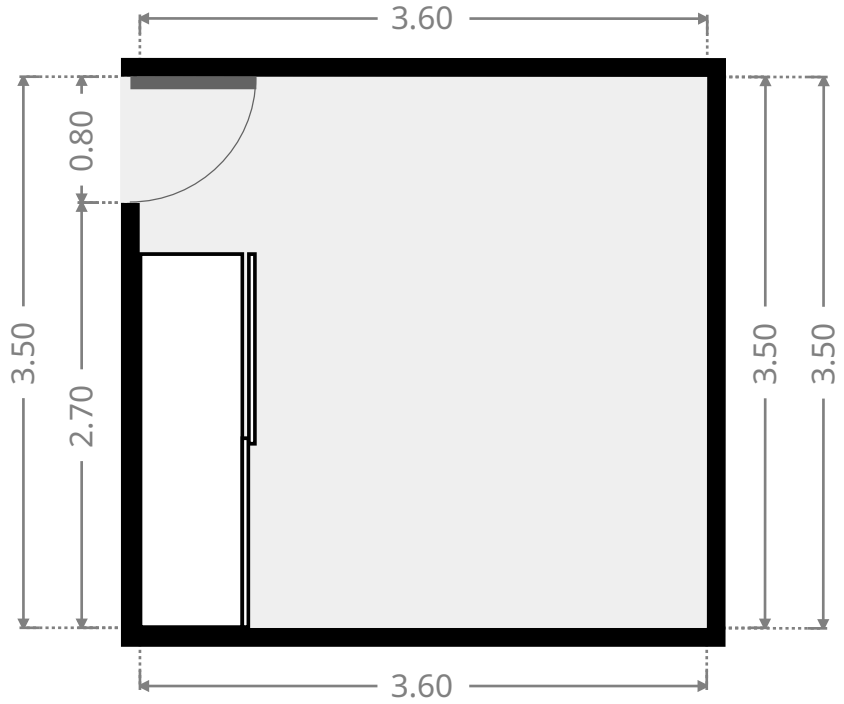
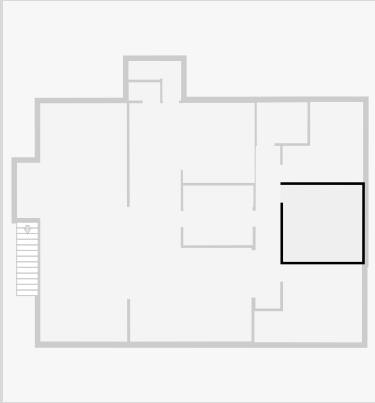
Width: 3.57 m
 Length: 4.91 m
 Area: 14.69 m²
 Perimeter: 16.95 m



324 Greenlake Road

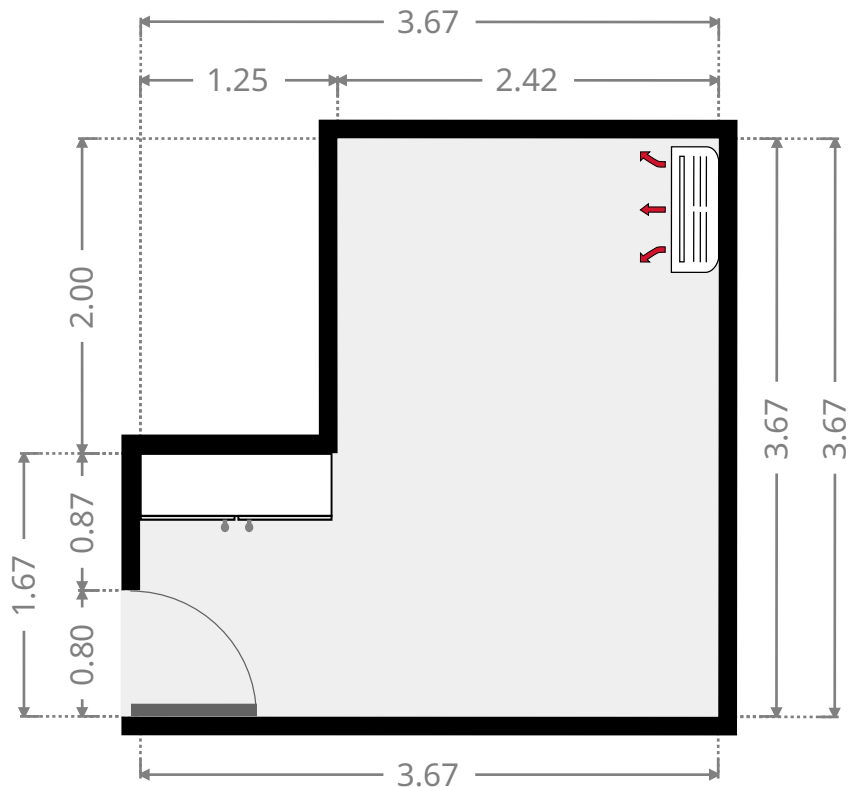
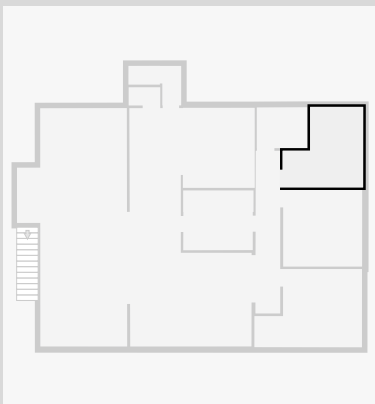
Bedroom

Width: 3.50 m
 Length: 3.60 m
 Area: 12.60 m²
 Perimeter: 14.20 m

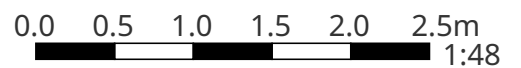


Bedroom

Width: 3.67 m
 Length: 3.67 m
 Area: 10.97 m²
 Perimeter: 14.68 m



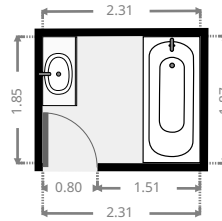
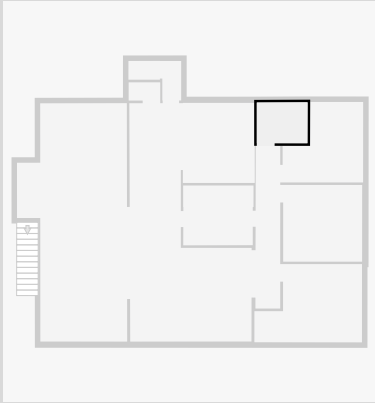
THIS FLOORPLAN IS PROVIDED WITHOUT WARRANTY OF ANY KIND. SENSOPIA DISCLAIMS ANY WARRANTY INCLUDING, WITHOUT LIMITATION, SATISFACTORY QUALITY OR ACCURACY OF DIMENSIONS.



324 Greenlake Road

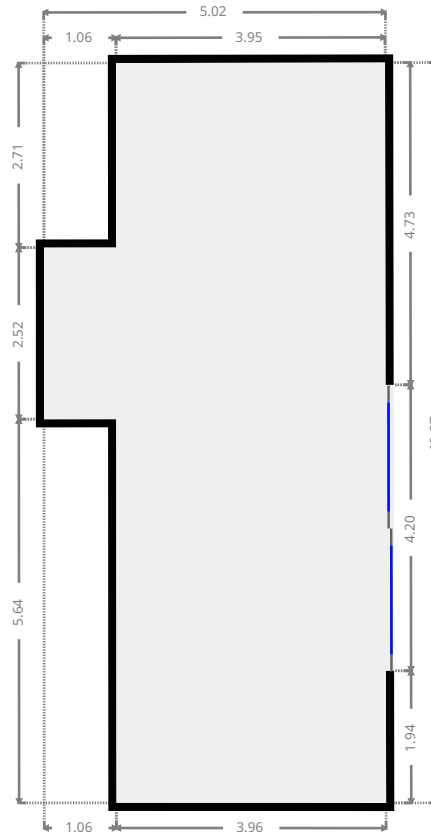
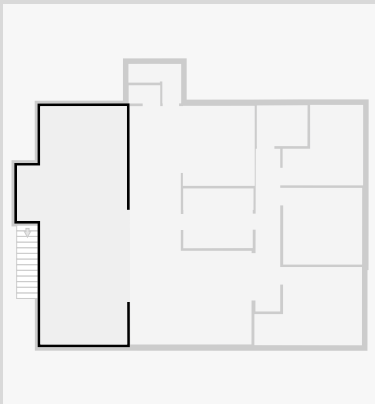
Bathroom

Width: 1.87 m
Length: 2.31 m
Area: 4.30 m²
Perimeter: 8.34 m



Other

Width: 5.02 m
Length: 10.87 m
Area: 45.67 m²
Perimeter: 31.77 m



THIS FLOORPLAN IS PROVIDED WITHOUT WARRANTY OF ANY KIND. SENSOPIA DISCLAIMS ANY WARRANTY INCLUDING, WITHOUT LIMITATION, SATISFACTORY QUALITY OR ACCURACY OF DIMENSIONS.

