

318 SHEILDS Avenue

SUBMITTED BY

Ray White Rockhampton Casey
stockers@cqoz.com

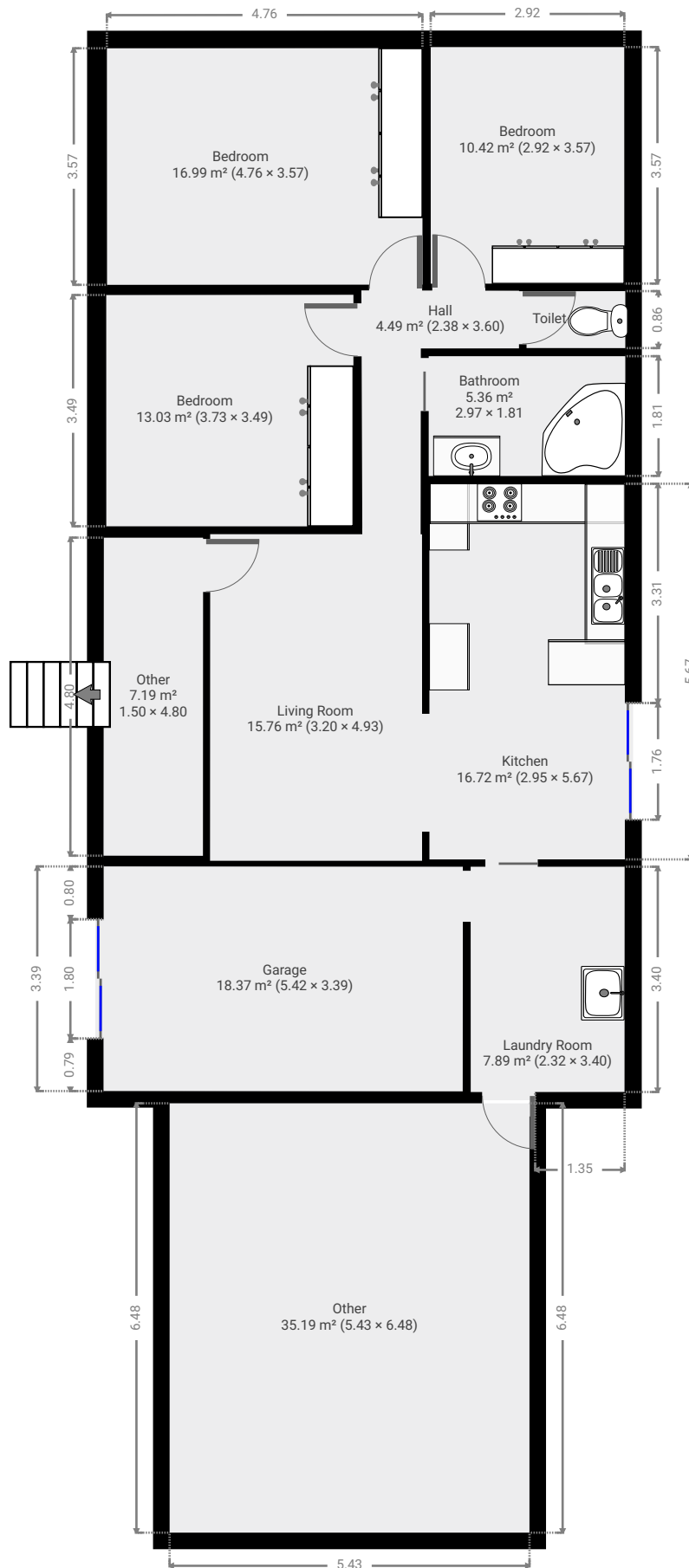
CREATED ON

2022-04-22

Floors

1

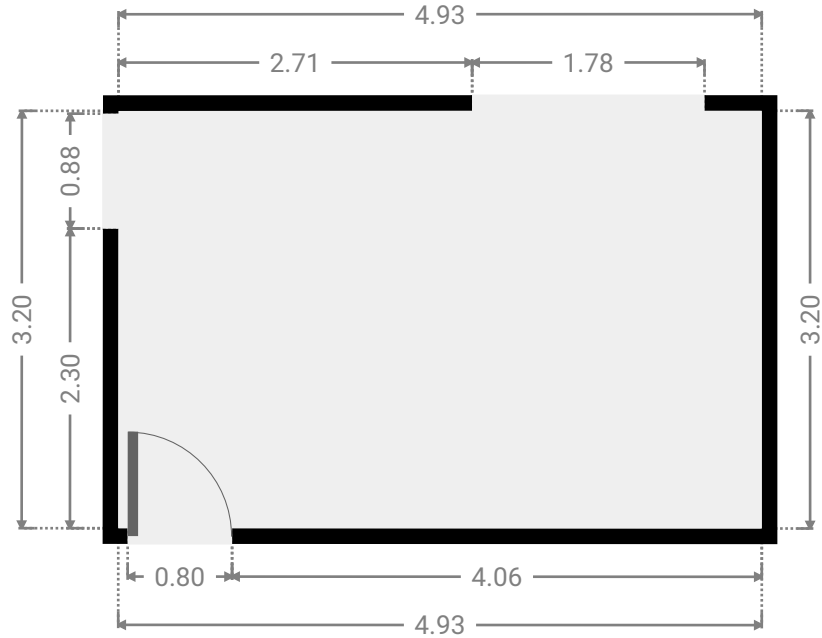
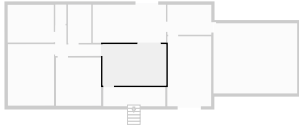
▼ Ground Floor



FLOORS: 1

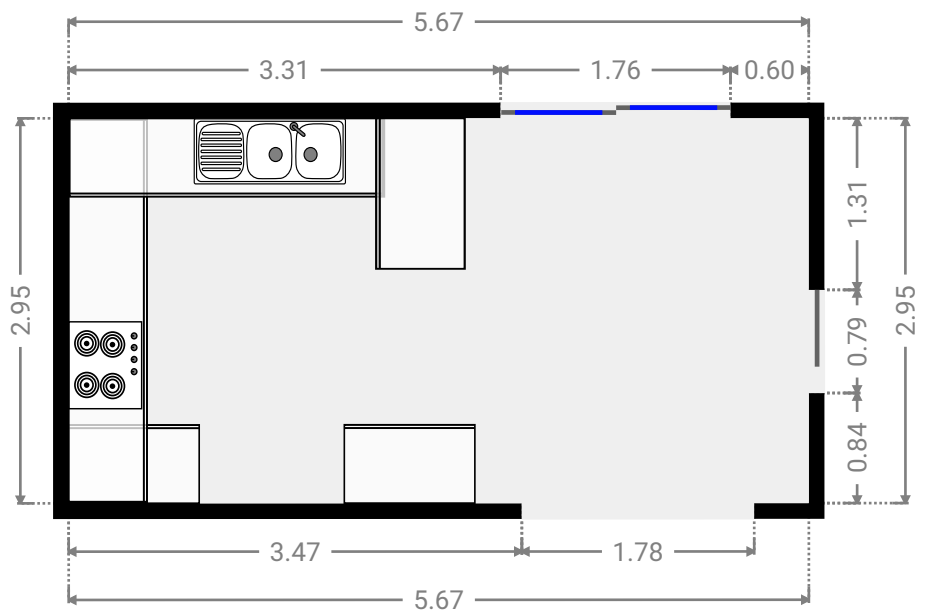
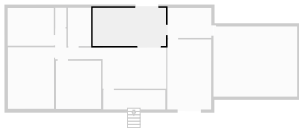
▼ Living Room
Ground Floor

WIDTH: 4.93 m • LENGTH: 3.20 m
AREA: 15.76 m² • PERIMETER: 16.25 m



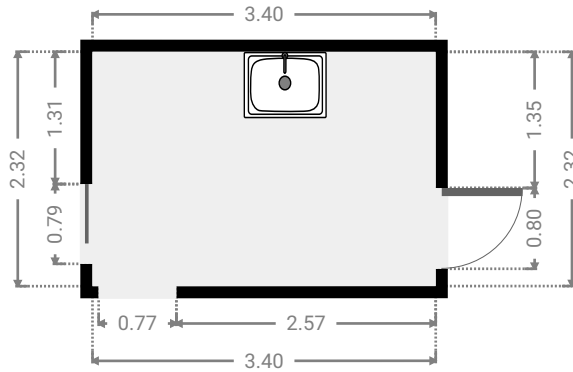
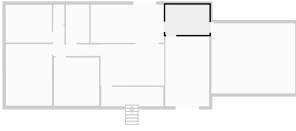
▼ Kitchen
Ground Floor

WIDTH: 5.67 m • LENGTH: 2.95 m
AREA: 16.72 m² • PERIMETER: 17.24 m



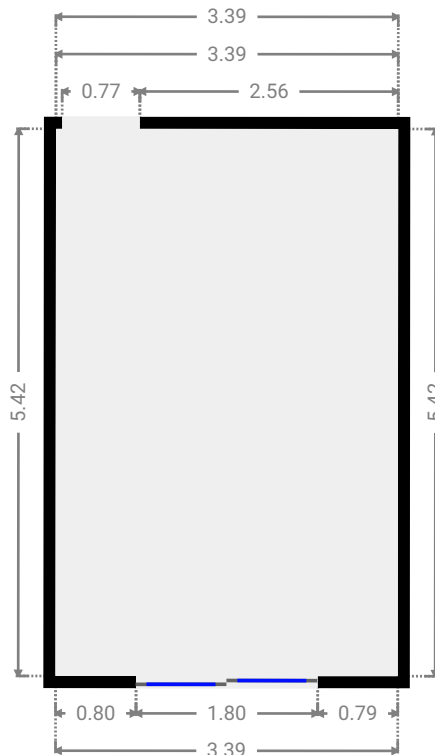
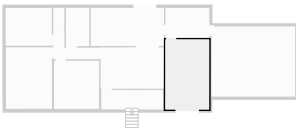
▼ **Laundry Room**
Ground Floor

WIDTH: 3.40 m • LENGTH: 2.32 m
AREA: 7.89 m² • PERIMETER: 11.44 m



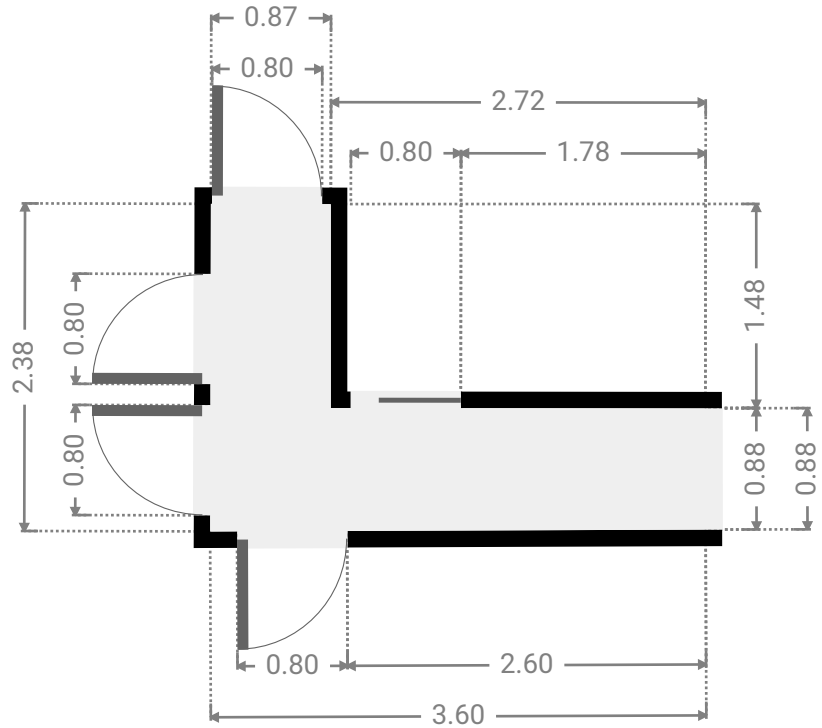
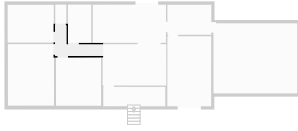
▼ **Garage**
Ground Floor

WIDTH: 3.39 m • LENGTH: 5.42 m
AREA: 18.37 m² • PERIMETER: 17.62 m



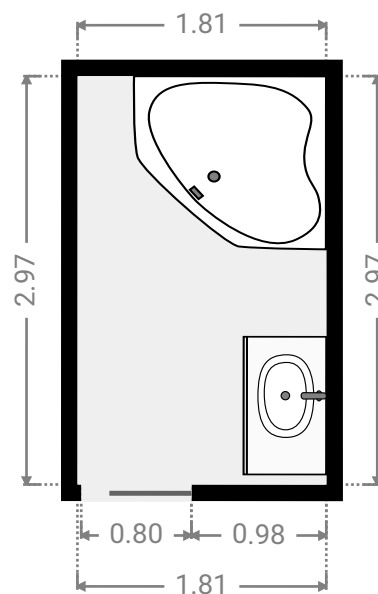
▼ **Hall**
Ground Floor

WIDTH: 3.60 m • LENGTH: 2.38 m
AREA: 4.49 m² • PERIMETER: 11.93 m



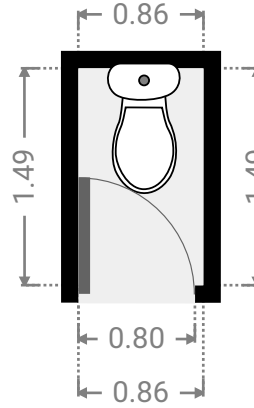
▼ **Bathroom**
Ground Floor

WIDTH: 1.81 m • LENGTH: 2.97 m
AREA: 5.36 m² • PERIMETER: 9.55 m



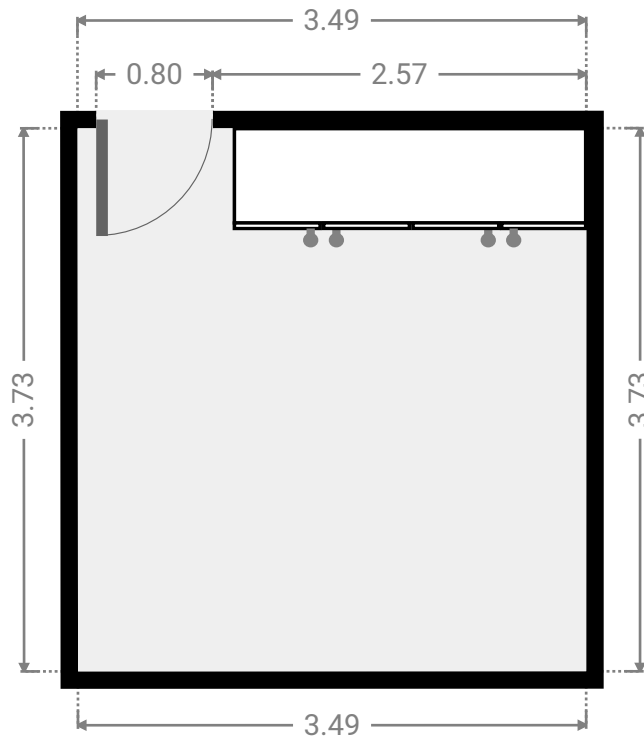
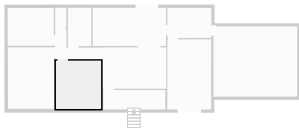
▼ **Toilet**
Ground Floor

WIDTH: 0.86 m • LENGTH: 1.49 m
AREA: 1.28 m² • PERIMETER: 4.70 m



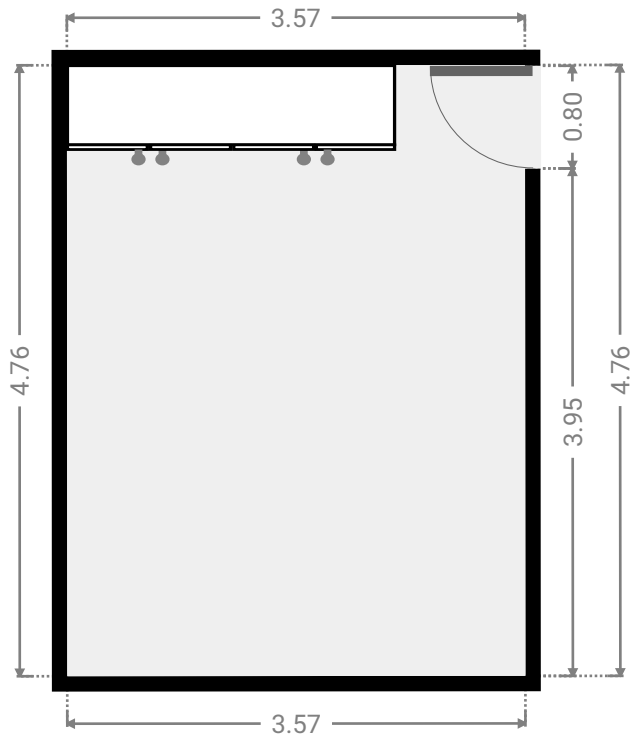
▼ **Bedroom**
Ground Floor

WIDTH: 3.49 m • LENGTH: 3.73 m
AREA: 13.03 m² • PERIMETER: 14.44 m



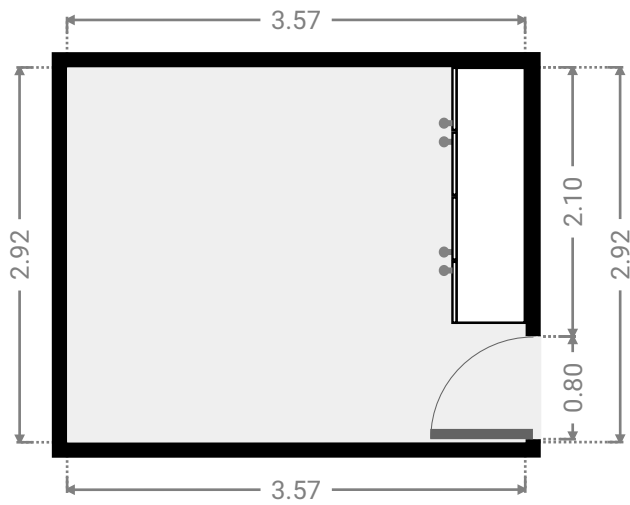
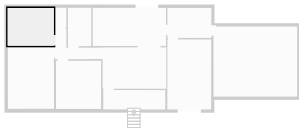
▼ **Bedroom**
Ground Floor

WIDTH: 3.57 m • LENGTH: 4.76 m
AREA: 16.99 m² • PERIMETER: 16.66 m



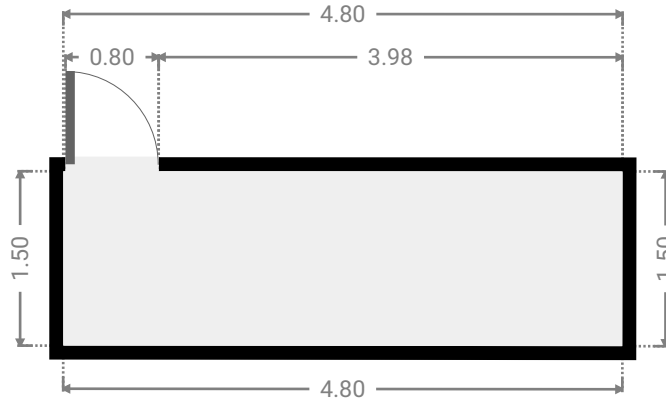
▼ **Bedroom**
Ground Floor

WIDTH: 3.57 m • LENGTH: 2.92 m
AREA: 10.42 m² • PERIMETER: 12.98 m



▼ Other
Ground Floor

WIDTH: 4.80 m • LENGTH: 1.50 m
AREA: 7.19 m² • PERIMETER: 12.60 m



▼ Other
Ground Floor

WIDTH: 6.48 m • LENGTH: 5.43 m
AREA: 35.19 m² • PERIMETER: 23.82 m

