

# 315 Frenchville Road

**SUBMITTED BY**

Ray White Rockhampton Casey  
stockers@cqoz.com

---

**CREATED ON**

2022-06-14

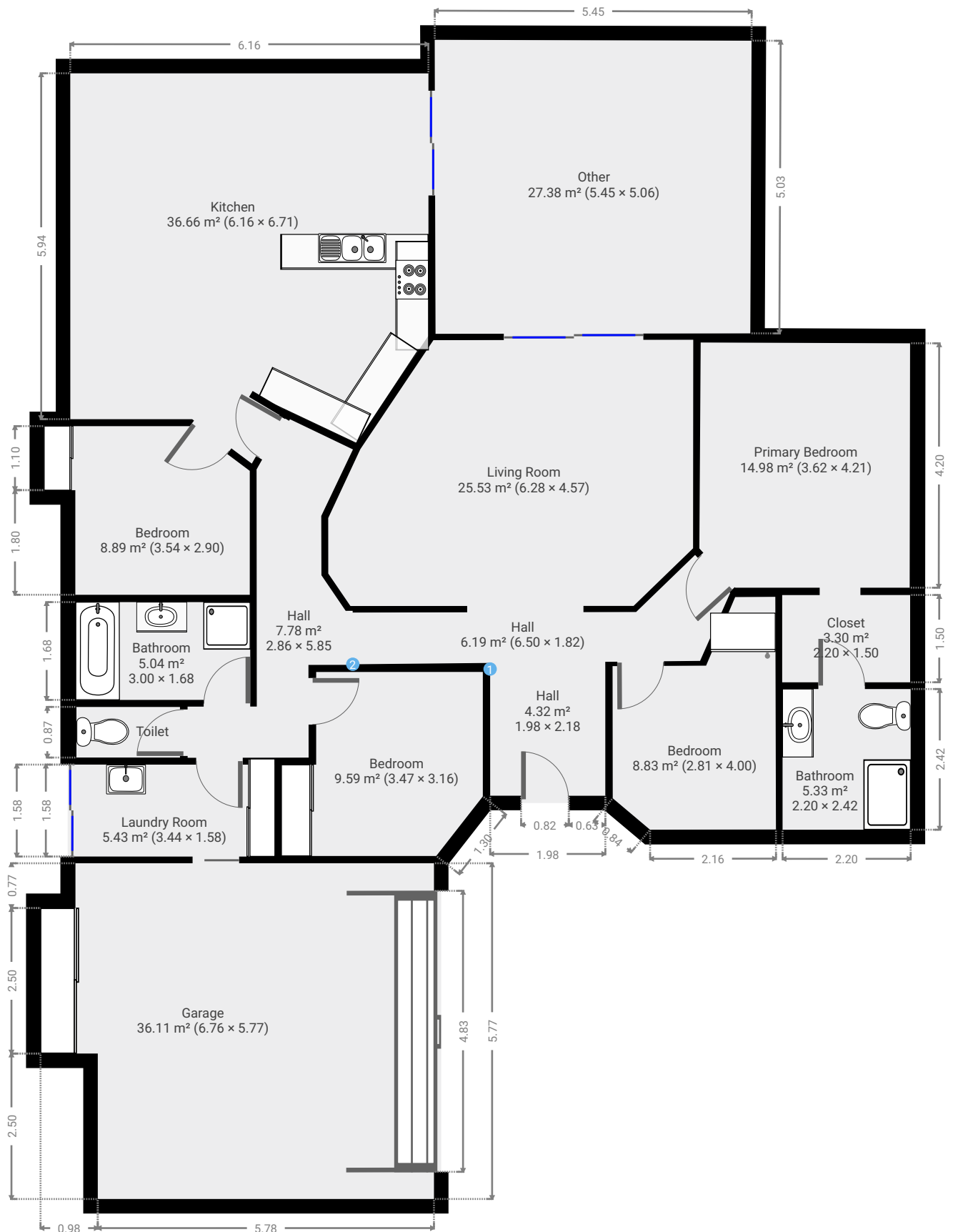
---

**Floors**

1

---

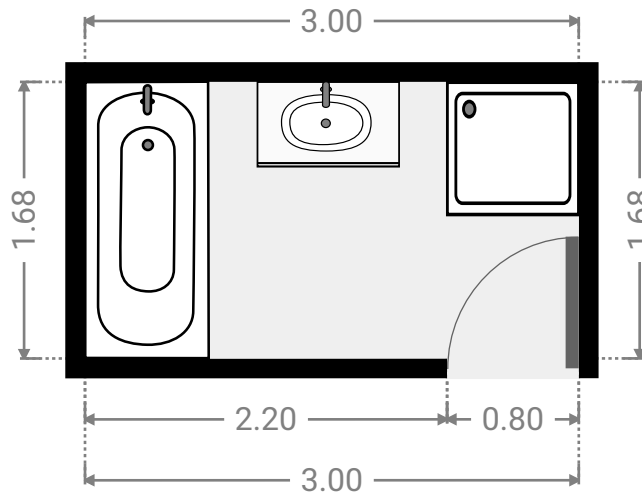
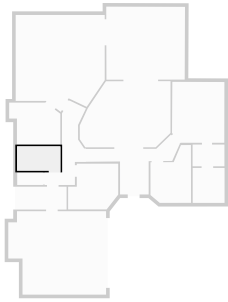
▼ Ground Floor



FLOORS: 1

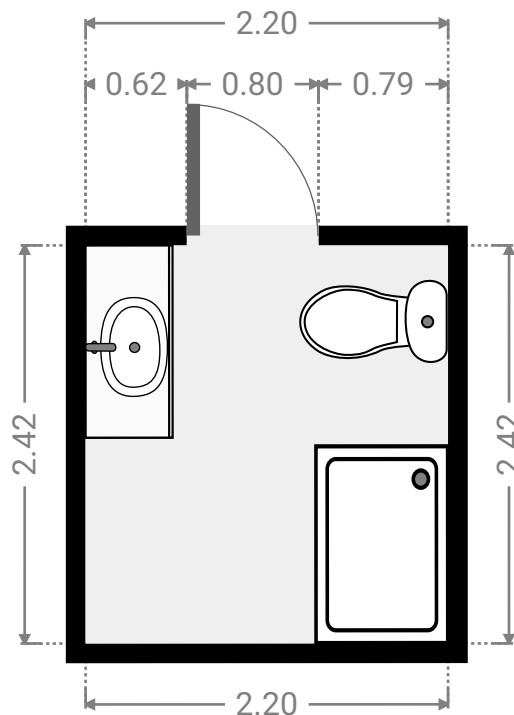
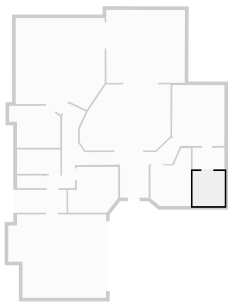
▼ Bathroom  
Ground Floor

WIDTH: 3.00 m • LENGTH: 1.68 m  
AREA: 5.04 m<sup>2</sup> • PERIMETER: 9.36 m



▼ Bathroom  
Ground Floor

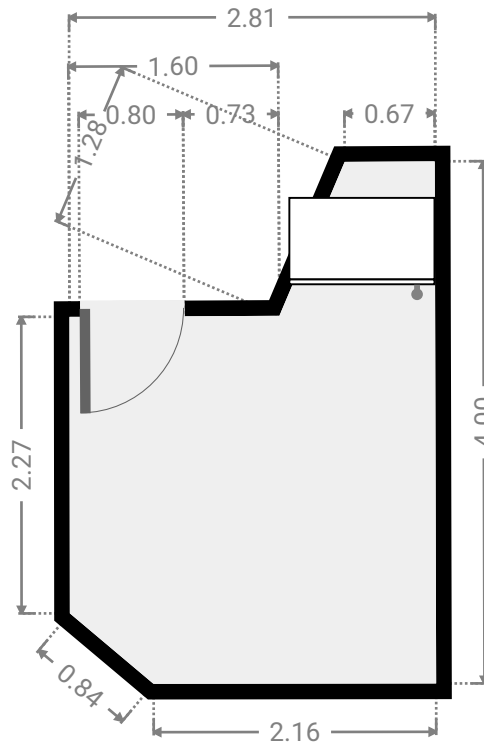
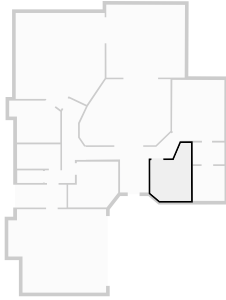
WIDTH: 2.20 m • LENGTH: 2.42 m  
AREA: 5.33 m<sup>2</sup> • PERIMETER: 9.24 m



FLOORS: 1

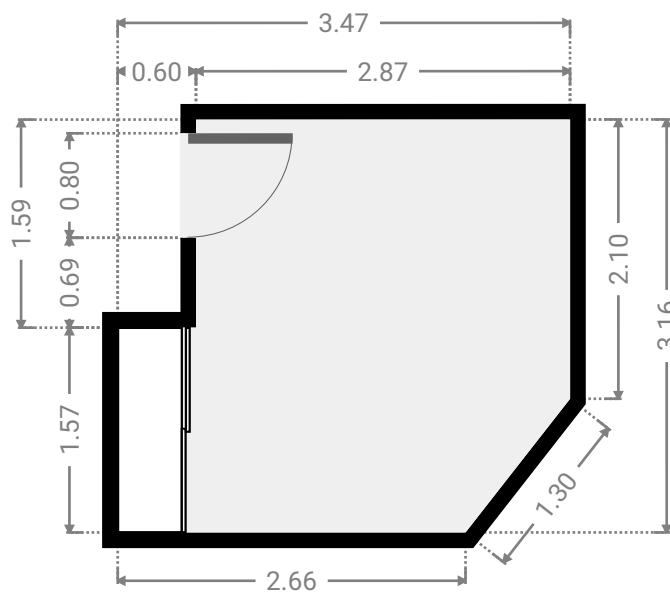
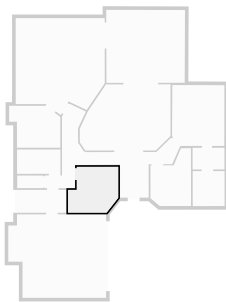
▼ **Bedroom**  
Ground Floor

WIDTH: 2.81 m • LENGTH: 4.00 m  
AREA: 8.83 m<sup>2</sup> • PERIMETER: 12.85 m



▼ **Bedroom**  
Ground Floor

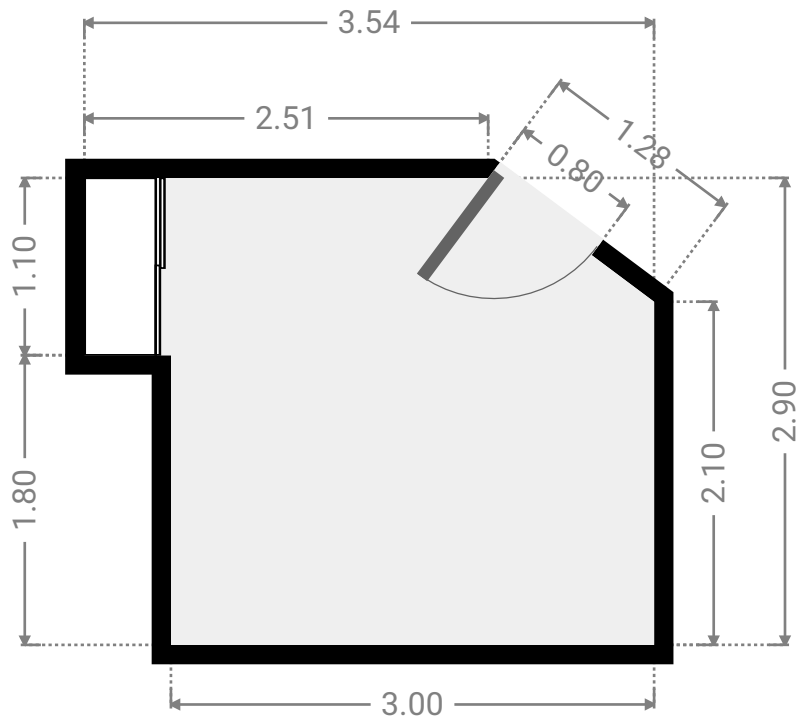
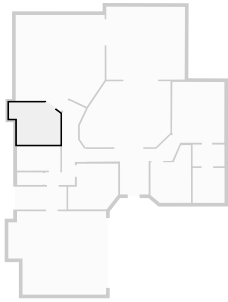
WIDTH: 3.47 m • LENGTH: 3.16 m  
AREA: 9.59 m<sup>2</sup> • PERIMETER: 12.73 m



FLOORS: 1

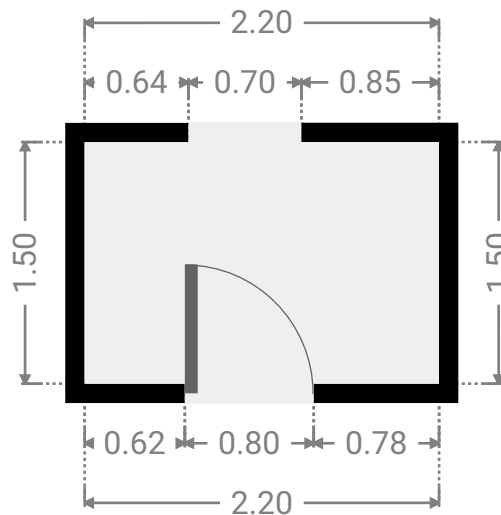
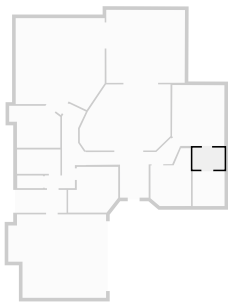
▼ **Bedroom**  
Ground Floor

WIDTH: 3.54 m • LENGTH: 2.90 m  
AREA: 8.89 m<sup>2</sup> • PERIMETER: 12.36 m



▼ **Closet**  
Ground Floor

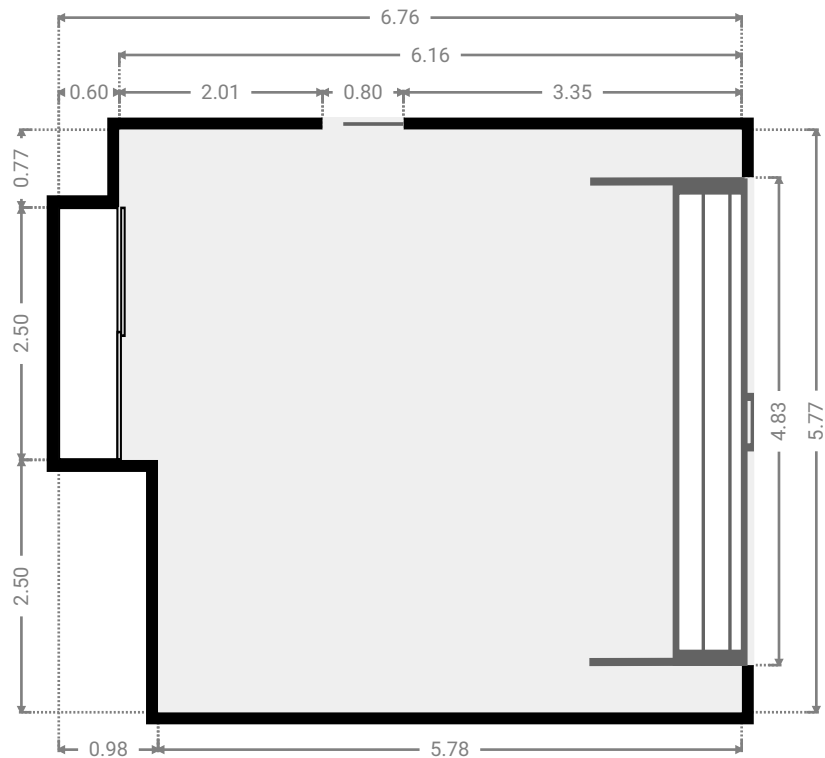
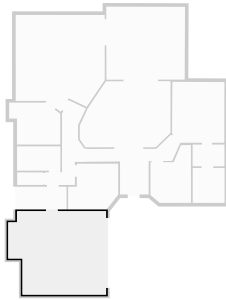
WIDTH: 2.20 m • LENGTH: 1.50 m  
AREA: 3.30 m<sup>2</sup> • PERIMETER: 7.40 m



FLOORS: 1

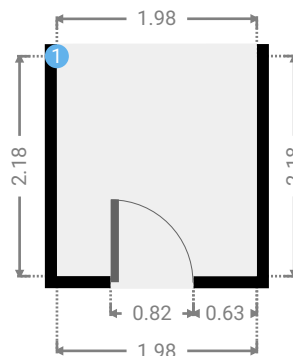
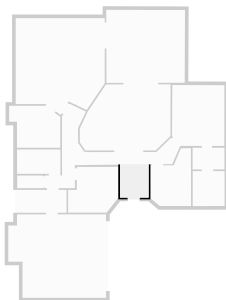
▼ **Garage**  
Ground Floor

WIDTH: 6.76 m • LENGTH: 5.77 m  
AREA: 36.11 m<sup>2</sup> • PERIMETER: 25.07 m



▼ **Hall**  
Ground Floor

WIDTH: 1.98 m • LENGTH: 2.18 m  
AREA: 4.32 m<sup>2</sup> • PERIMETER: 8.32 m



▼ **Hall/Ground Floor**

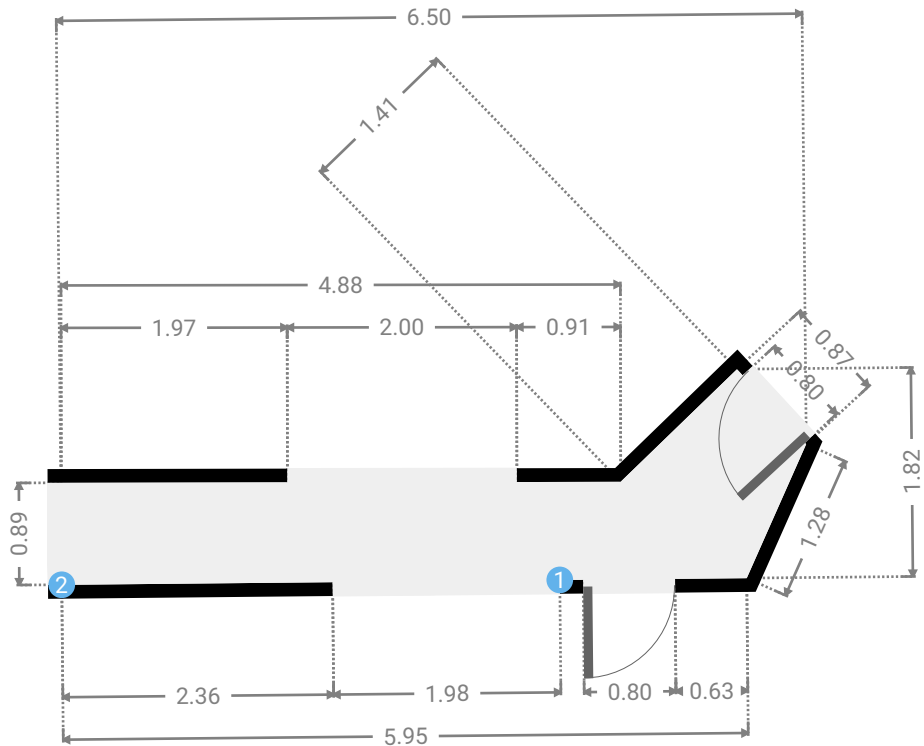
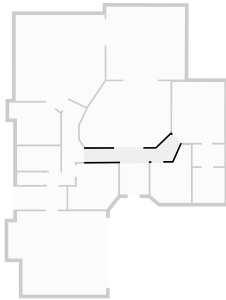
1 **OPENING**

Height  
0.00 m



▼ **Hall**  
Ground Floor

WIDTH: 6.50 m • LENGTH: 1.82 m  
AREA: 6.19 m<sup>2</sup> • PERIMETER: 15.32 m



▼ **Hall/Ground Floor**

**2 OPENING**

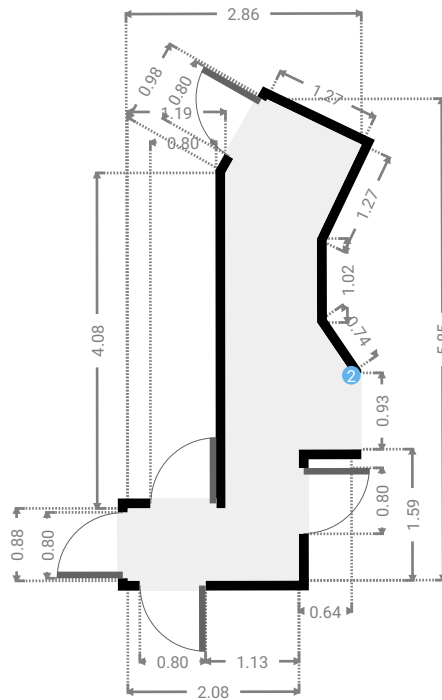
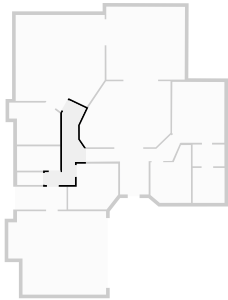
Height  
0.00 m





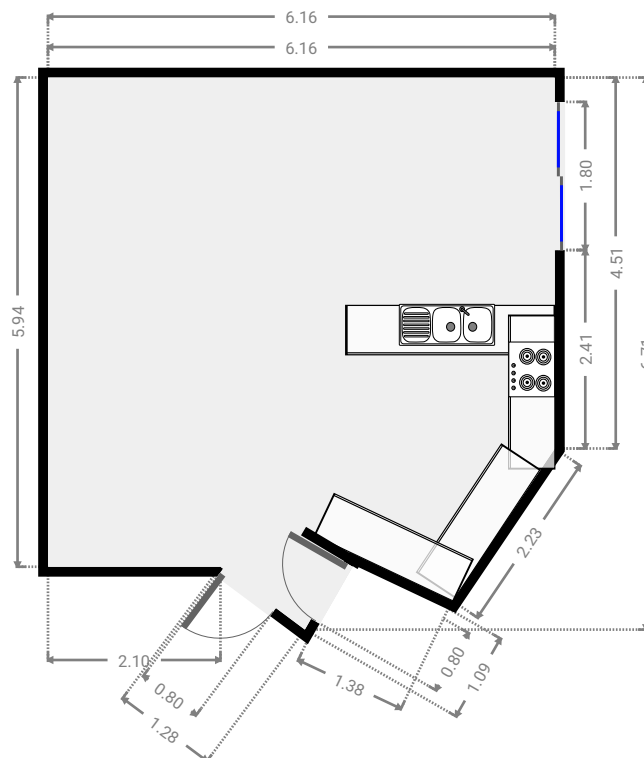
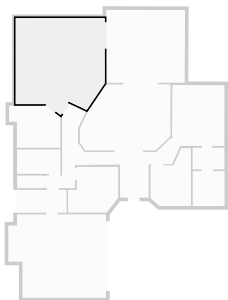
▼ **Hall**  
Ground Floor

WIDTH: 2.86 m • LENGTH: 5.85 m  
AREA: 7.78 m<sup>2</sup> • PERIMETER: 16.72 m



▼ **Kitchen**  
Ground Floor

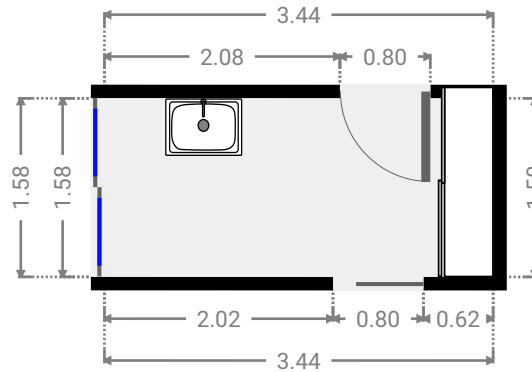
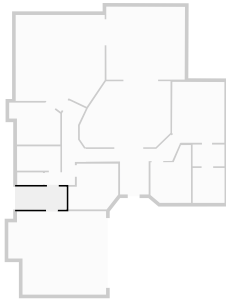
WIDTH: 6.16 m • LENGTH: 6.71 m  
AREA: 36.66 m<sup>2</sup> • PERIMETER: 24.68 m



FLOORS: 1

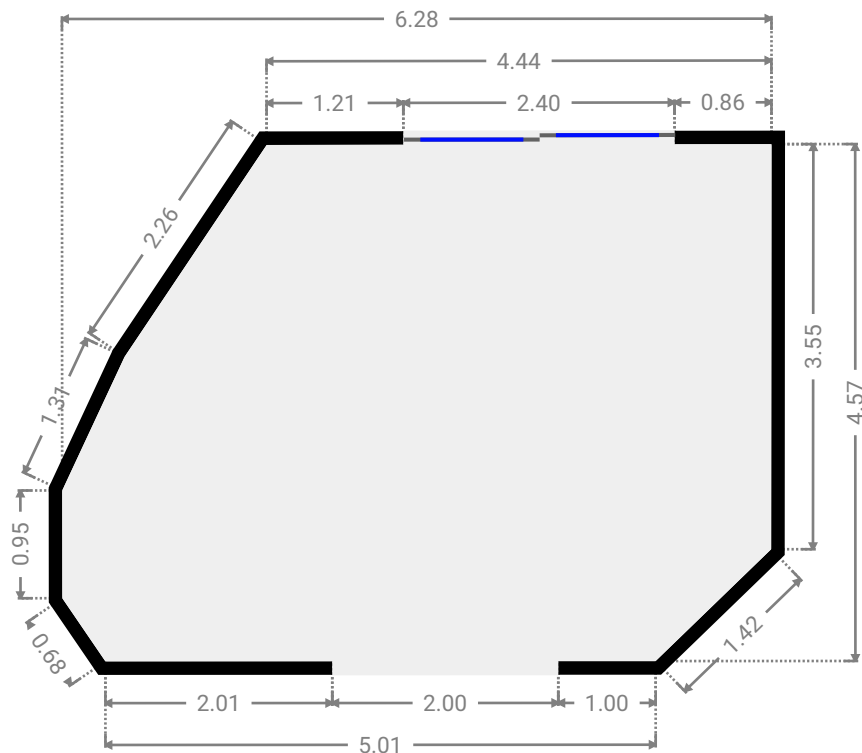
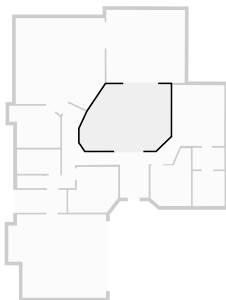
▼ **Laundry Room**  
Ground Floor

WIDTH: 3.44 m • LENGTH: 1.58 m  
AREA: 5.43 m<sup>2</sup> • PERIMETER: 10.04 m



▼ **Living Room**  
Ground Floor

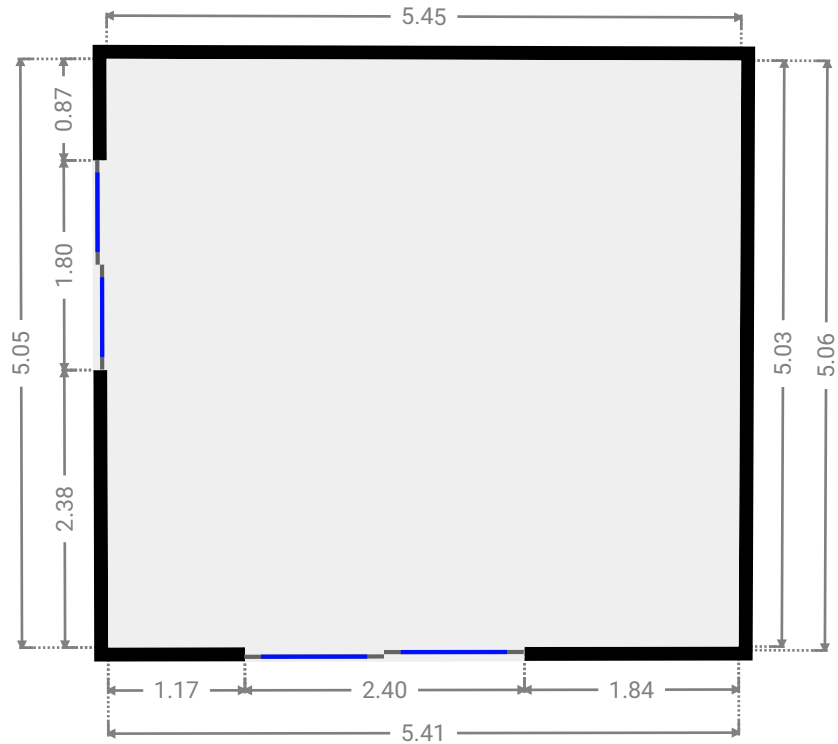
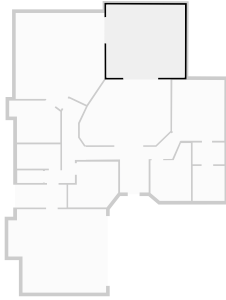
WIDTH: 6.28 m • LENGTH: 4.57 m  
AREA: 25.53 m<sup>2</sup> • PERIMETER: 19.54 m



FLOORS: 1

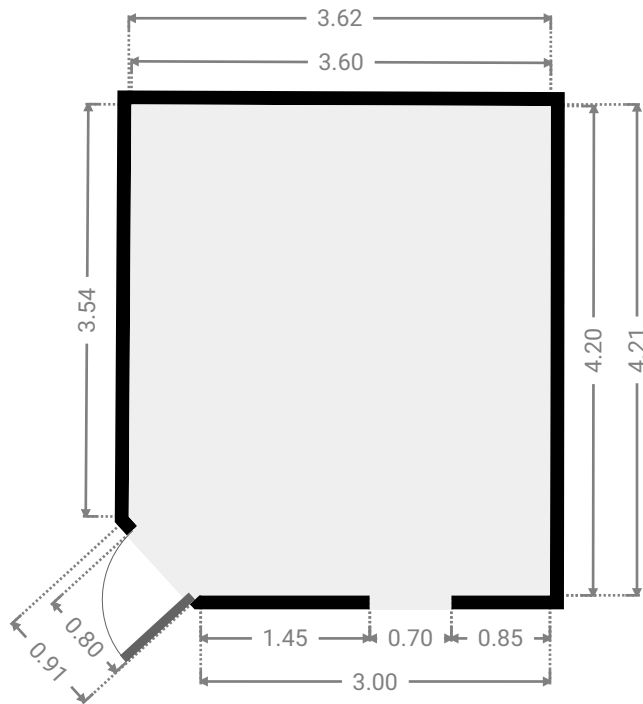
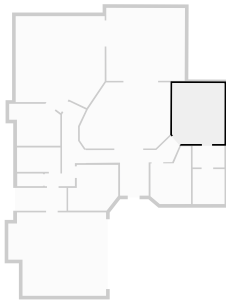
▼ **Other**  
Ground Floor

WIDTH: 5.45 m • LENGTH: 5.06 m  
AREA: 27.38 m<sup>2</sup> • PERIMETER: 20.94 m



▼ **Primary Bedroom**  
Ground Floor

WIDTH: 3.62 m • LENGTH: 4.21 m  
AREA: 14.98 m<sup>2</sup> • PERIMETER: 15.25 m



FLOORS: 1

▼ **Toilet**  
Ground Floor

WIDTH: 1.78 m • LENGTH: 0.87 m  
AREA: 1.55 m<sup>2</sup> • PERIMETER: 5.30 m

