

# 313 Frenchville Road

## Ground Floor



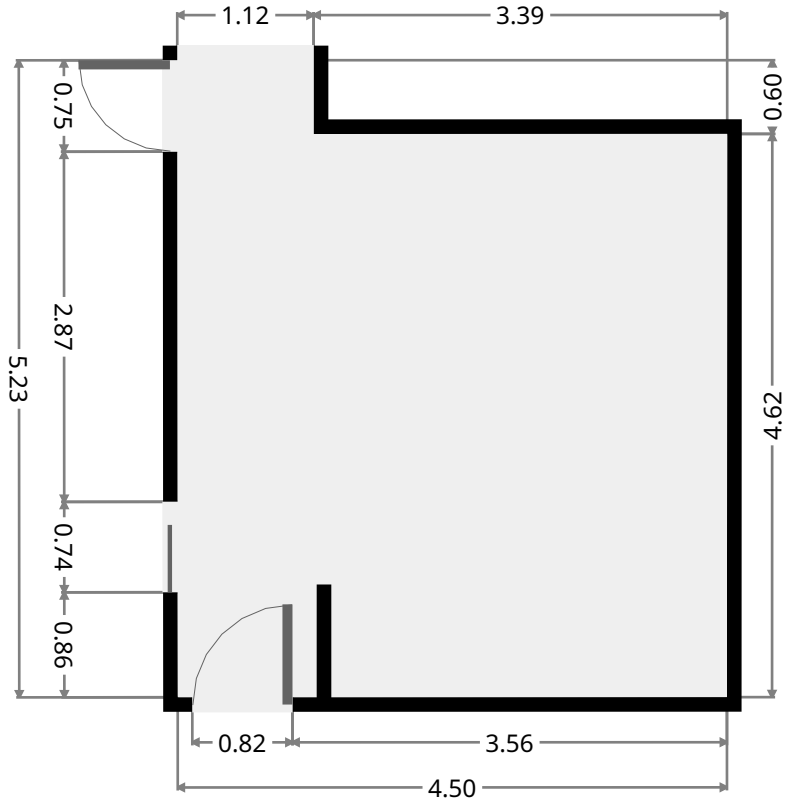
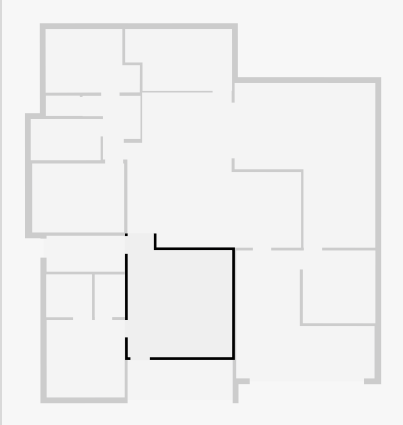
THIS FLOORPLAN IS PROVIDED WITHOUT WARRANTY OF ANY KIND. SENSOPIA DISCLAIMS ANY WARRANTY INCLUDING, WITHOUT LIMITATION, SATISFACTORY QUALITY OR ACCURACY OF DIMENSIONS.



# 313 Frenchville Road

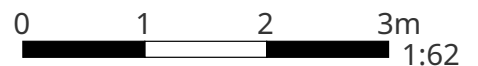
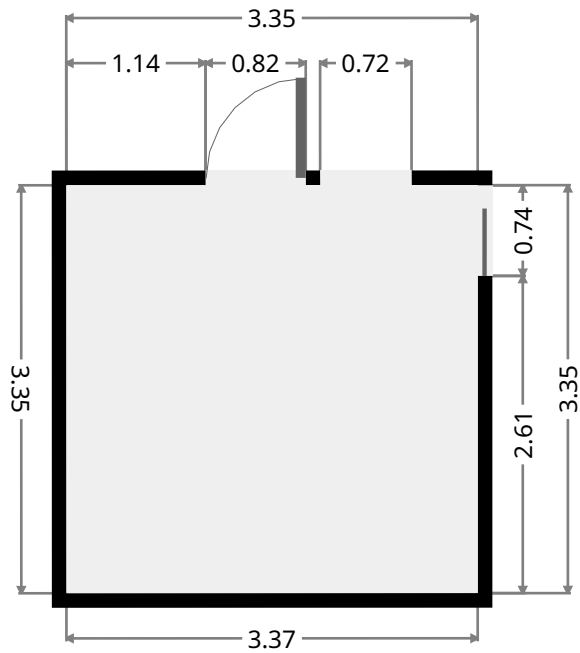
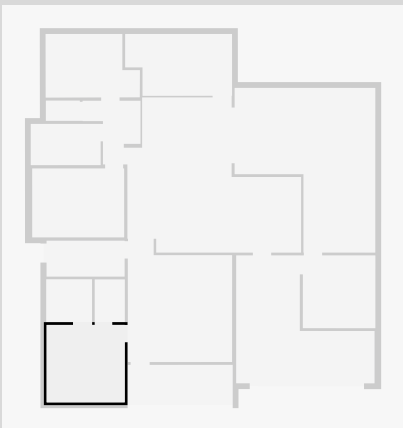
## Living Room

Width: 4.50 m  
 Length: 5.23 m  
 Area: 21.51 m<sup>2</sup>  
 Perimeter: 19.47 m



## Master Bedroom

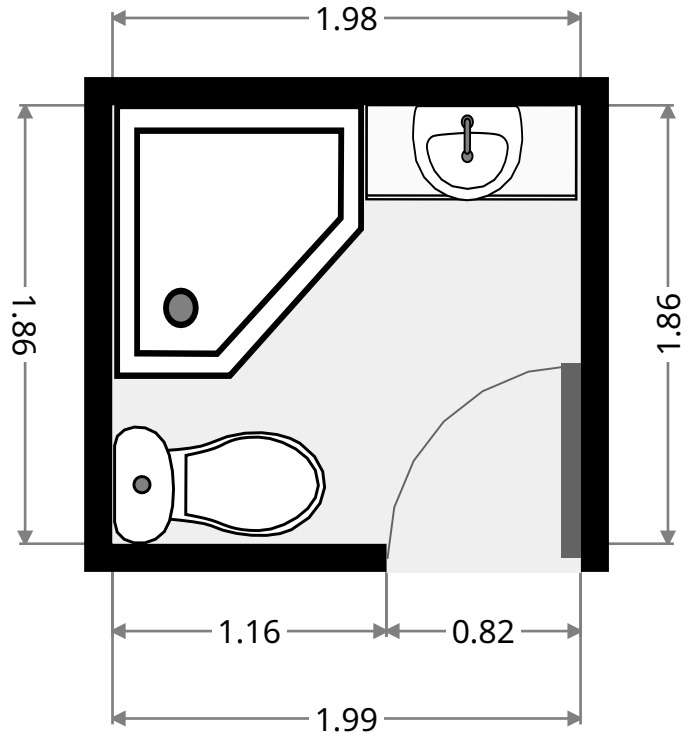
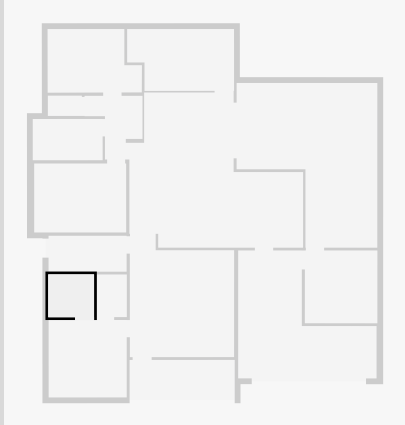
Width: 3.35 m  
 Length: 3.38 m  
 Area: 11.29 m<sup>2</sup>  
 Perimeter: 13.44 m



# 313 Frenchville Road

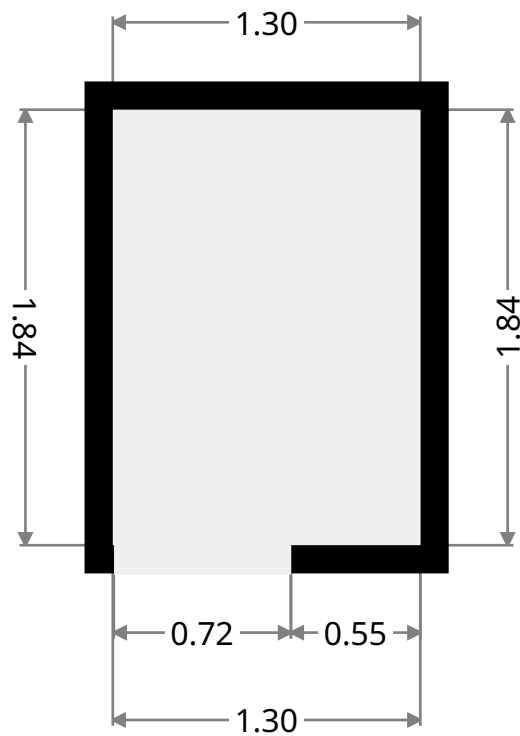
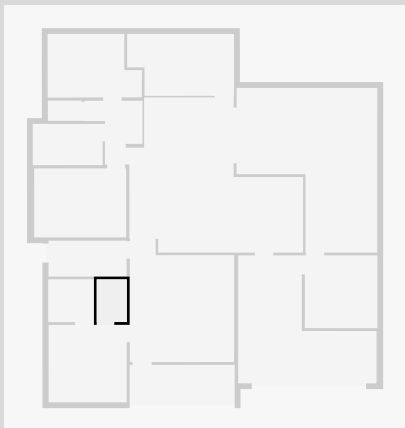
## Ensuite

Width: 1.86 m  
Length: 1.98 m  
Area: 3.68 m<sup>2</sup>  
Perimeter: 7.68 m



## WIR

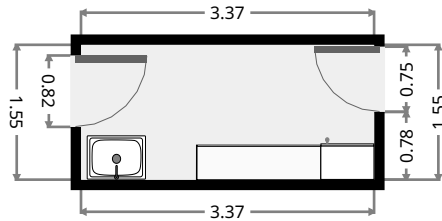
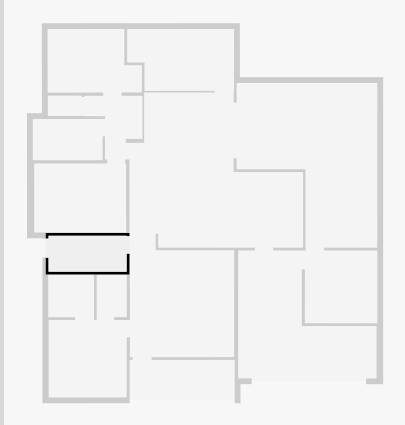
Width: 1.30 m  
Length: 1.84 m  
Area: 2.40 m<sup>2</sup>  
Perimeter: 6.29 m



# 313 Frenchville Road

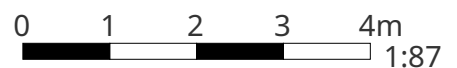
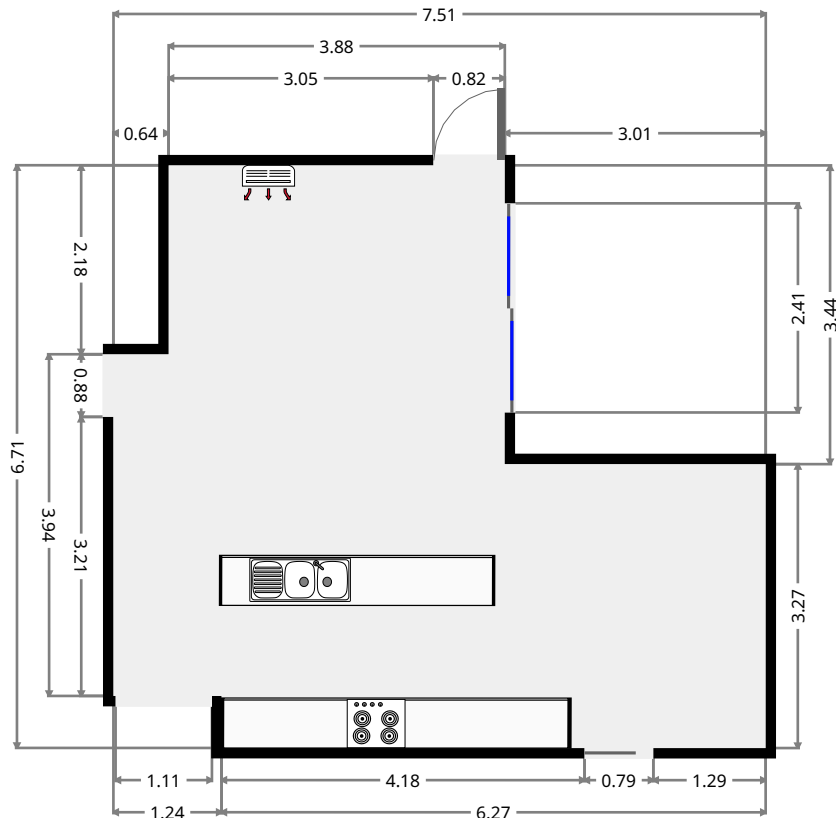
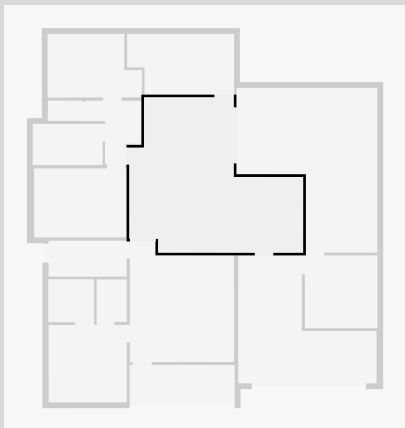
## Laundry Room

Width: 1.55 m  
 Length: 3.37 m  
 Area: 5.24 m<sup>2</sup>  
 Perimeter: 9.85 m



## Kitchen/Living/Dining

Width: 6.71 m  
 Length: 7.51 m  
 Area: 37.91 m<sup>2</sup>  
 Perimeter: 28.44 m

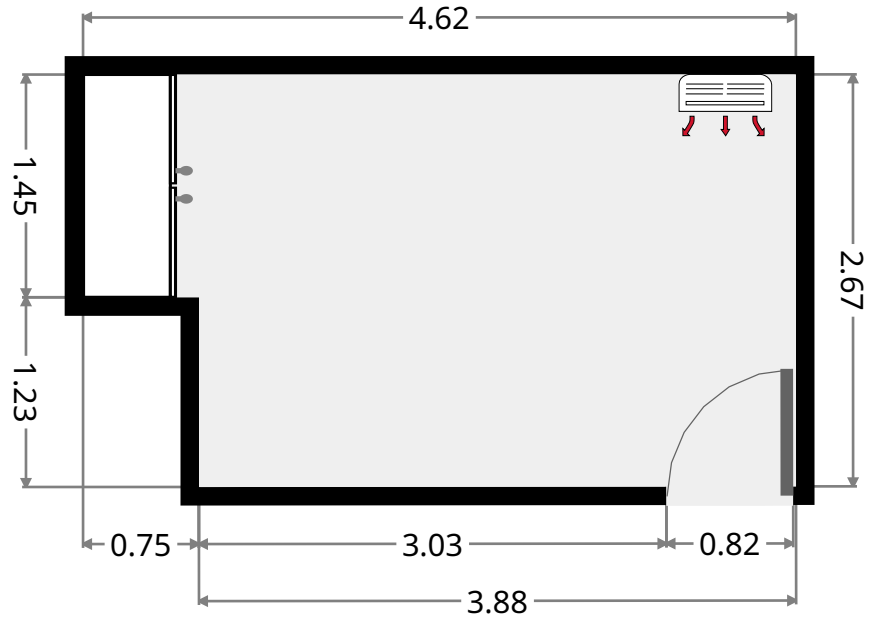
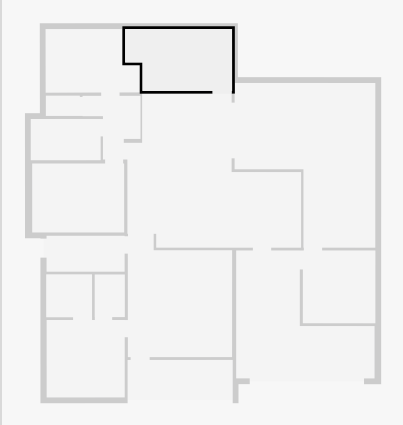


THIS FLOORPLAN IS PROVIDED WITHOUT WARRANTY OF ANY KIND. SENSOPIA DISCLAIMS ANY WARRANTY INCLUDING, WITHOUT LIMITATION, SATISFACTORY QUALITY OR ACCURACY OF DIMENSIONS.

# 313 Frenchville Road

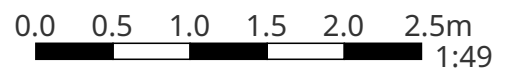
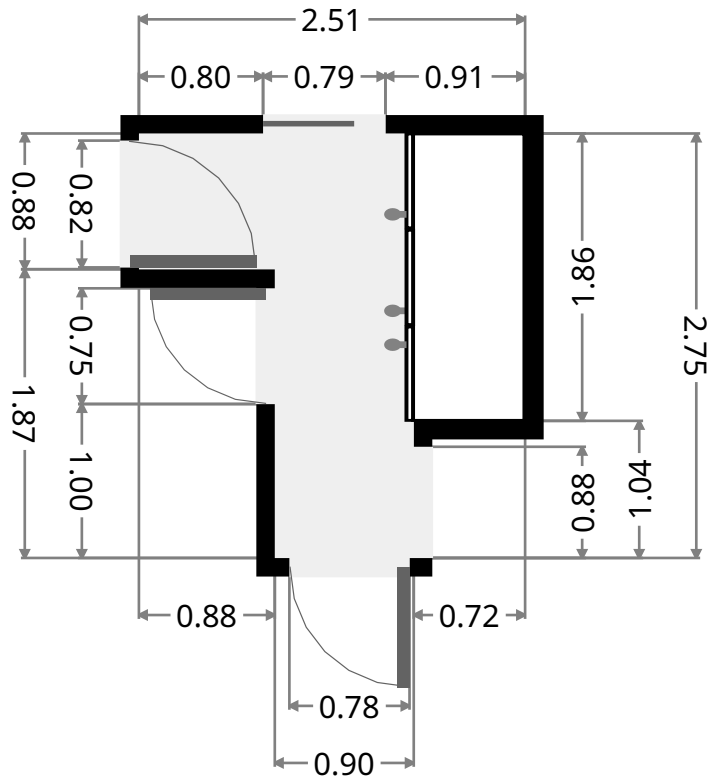
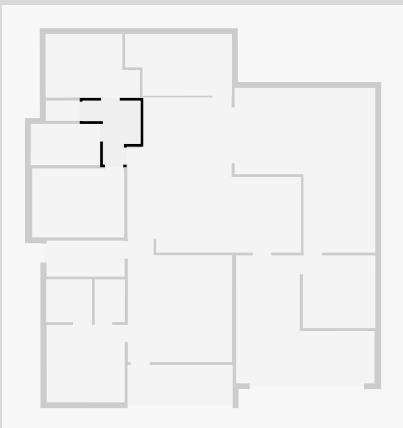
## Bedroom

Width: 2.67 m  
 Length: 4.62 m  
 Area: 11.43 m<sup>2</sup>  
 Perimeter: 14.59 m



## Hall

Width: 2.51 m  
 Length: 2.75 m  
 Area: 4.60 m<sup>2</sup>  
 Perimeter: 10.51 m

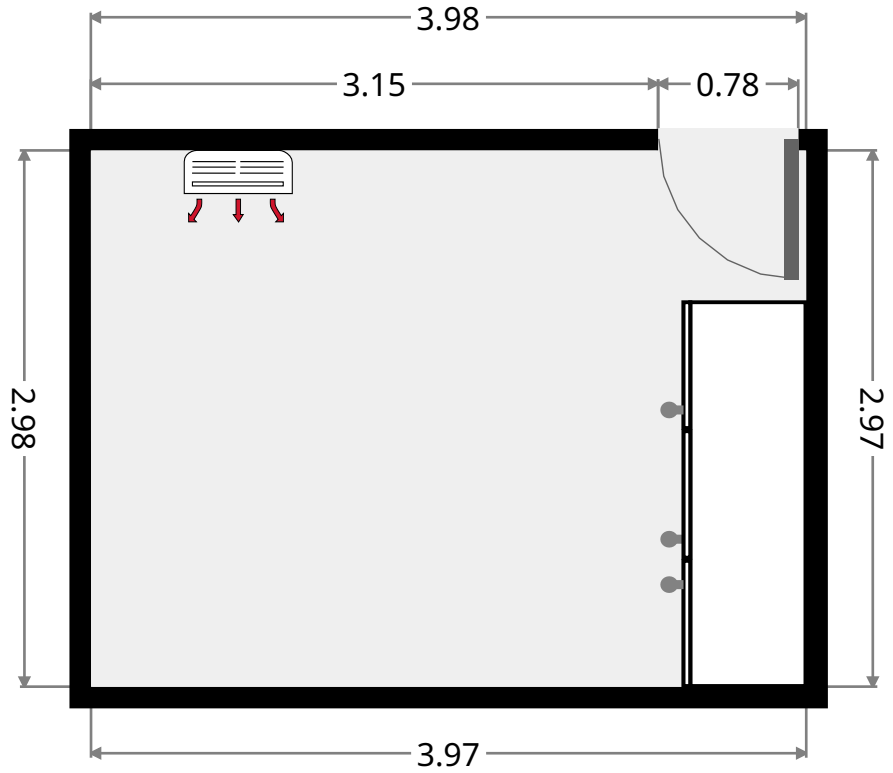
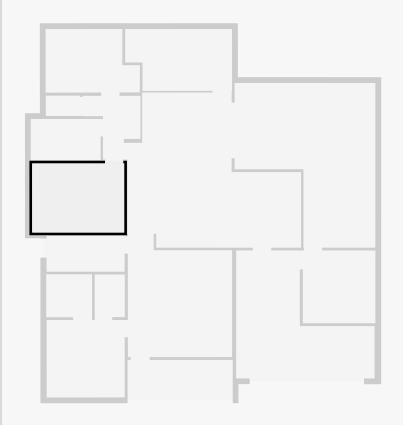


THIS FLOORPLAN IS PROVIDED WITHOUT WARRANTY OF ANY KIND. SENSOPIA DISCLAIMS ANY WARRANTY INCLUDING, WITHOUT LIMITATION, SATISFACTORY QUALITY OR ACCURACY OF DIMENSIONS.

# 313 Frenchville Road

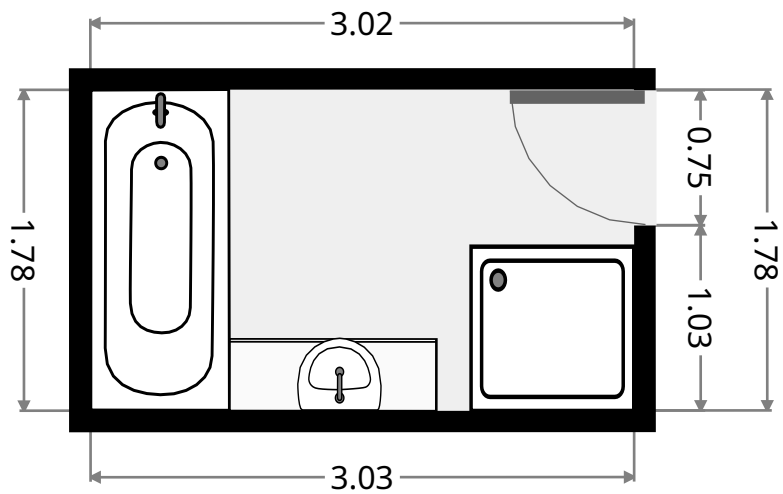
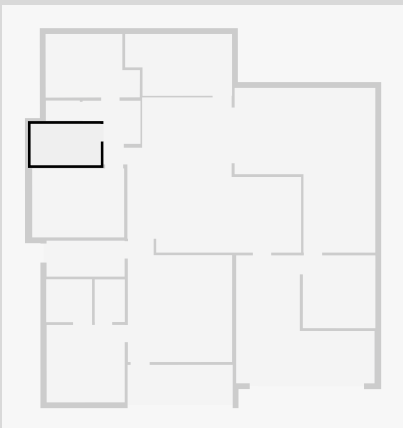
## Bedroom

Width: 2.97 m  
 Length: 3.98 m  
 Area: 11.85 m<sup>2</sup>  
 Perimeter: 13.91 m

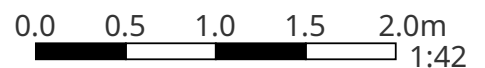


## Bathroom

Width: 1.78 m  
 Length: 3.02 m  
 Area: 5.39 m<sup>2</sup>  
 Perimeter: 9.61 m



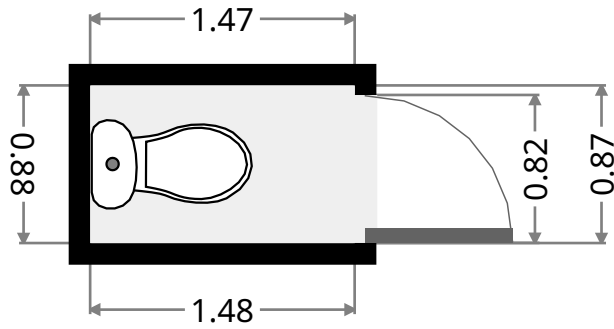
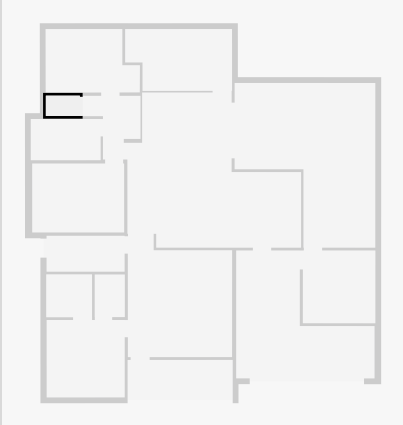
THIS FLOORPLAN IS PROVIDED WITHOUT WARRANTY OF ANY KIND. SENSOPIA DISCLAIMS ANY WARRANTY INCLUDING, WITHOUT LIMITATION, SATISFACTORY QUALITY OR ACCURACY OF DIMENSIONS.



# 313 Frenchville Road

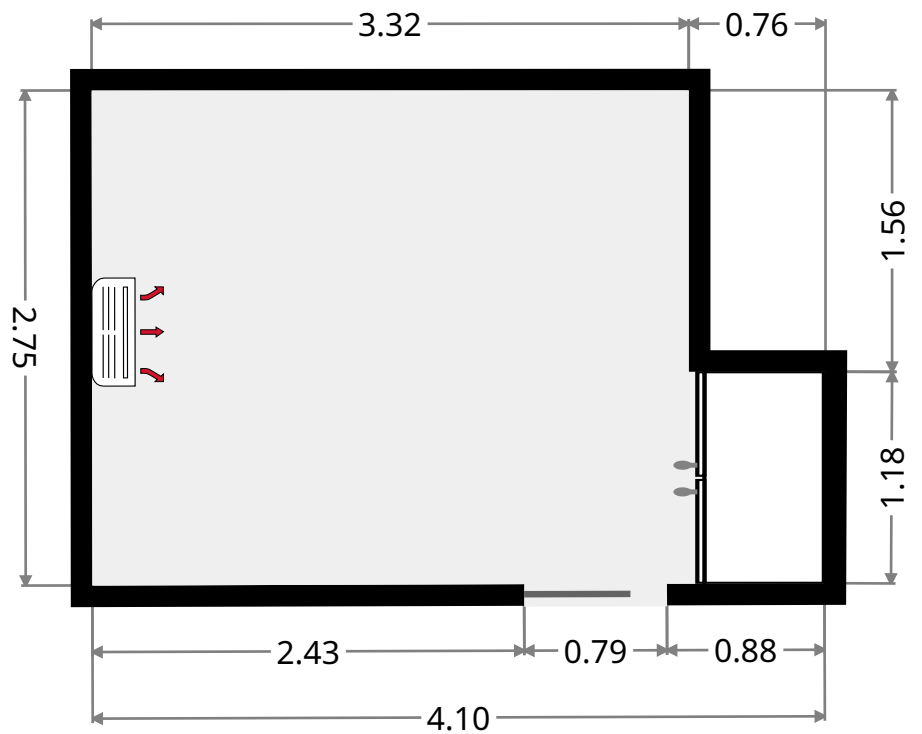
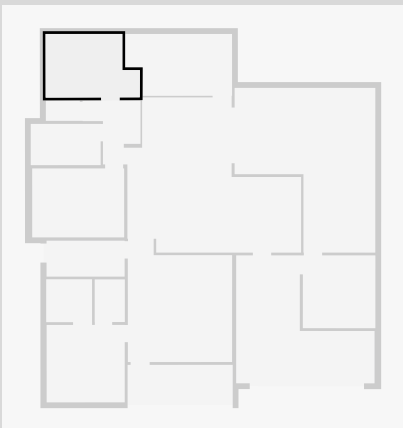
## Toilet

Width: 0.87 m  
Length: 1.47 m  
Area: 1.29 m<sup>2</sup>  
Perimeter: 4.69 m



## Bedroom

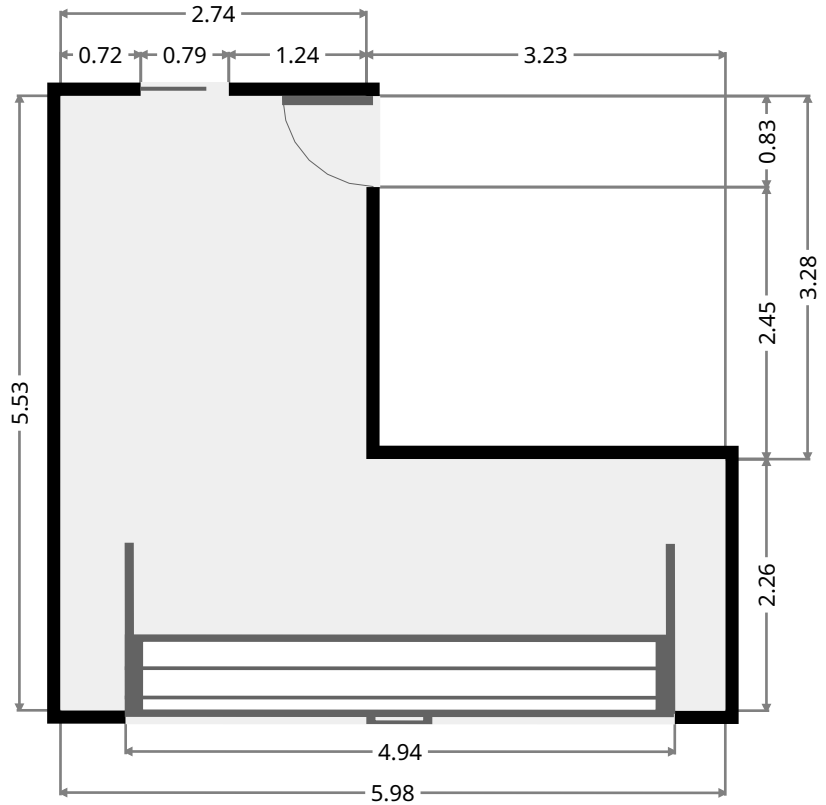
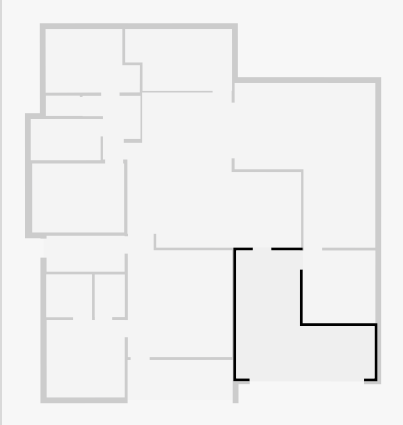
Width: 2.75 m  
Length: 4.07 m  
Area: 10.00 m<sup>2</sup>  
Perimeter: 13.64 m



# 313 Frenchville Road

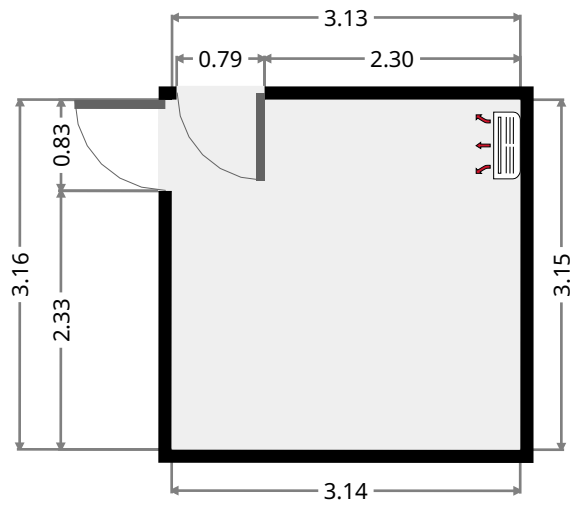
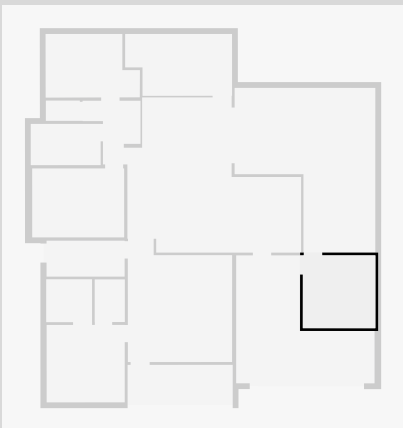
## Garage

Width: 5.53 m  
 Length: 5.98 m  
 Area: 22.52 m<sup>2</sup>  
 Perimeter: 23.02 m



## Study

Width: 3.13 m  
 Length: 3.15 m  
 Area: 9.87 m<sup>2</sup>  
 Perimeter: 12.57 m

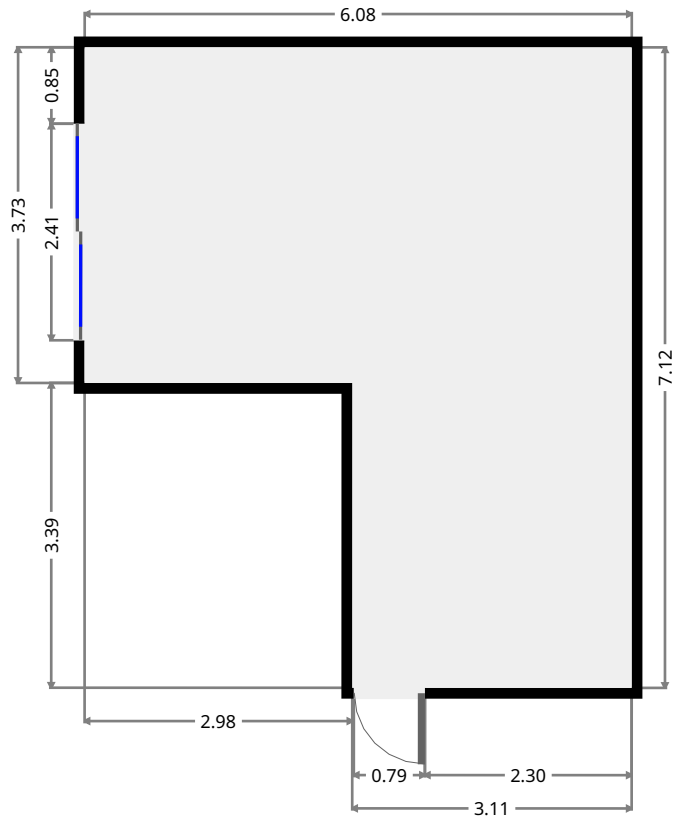
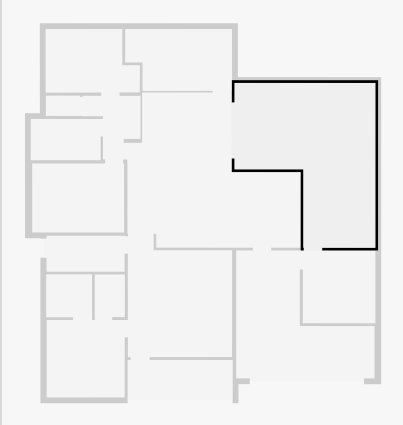




# 313 Frenchville Road

## Other

Width: 6.08 m  
 Length: 7.12 m  
 Area: 33.21 m<sup>2</sup>  
 Perimeter: 26.40 m



## Entry

Width: 1.61 m  
 Length: 4.54 m  
 Area: 7.33 m<sup>2</sup>  
 Perimeter: 12.32 m

