

31 Tomtitt Avenue

SUBMITTED BY

Ray White Rockhampton Casey
stockers@cqoz.com

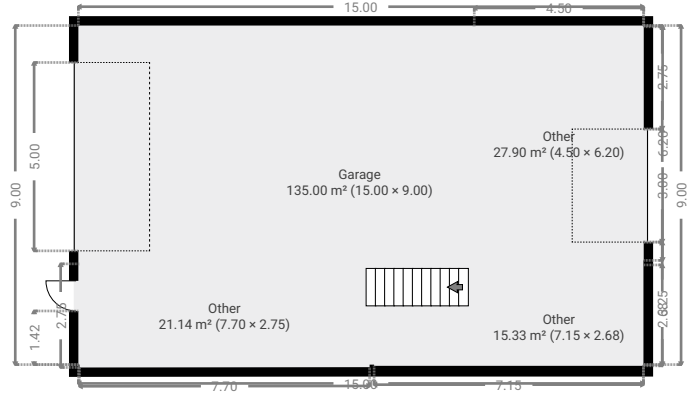
CREATED ON

2022-11-07

Floors

1

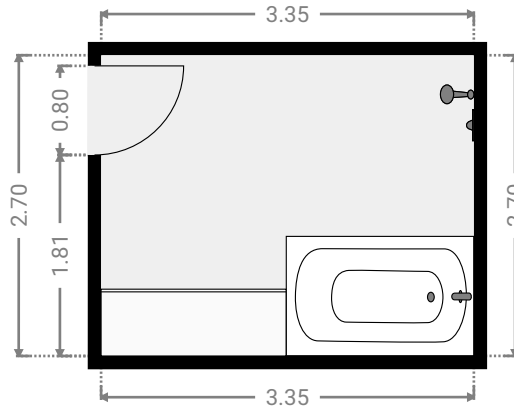
▼ Ground Floor



FLOORS: 1

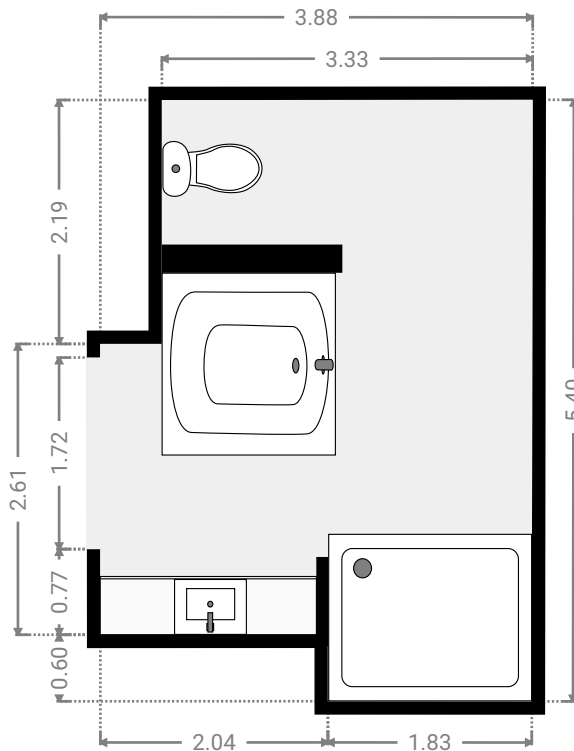
▼ **Bathroom**
Ground Floor

WIDTH: 3.35 m • LENGTH: 2.70 m
AREA: 9.04 m² • PERIMETER: 12.10 m



▼ **Bathroom**
Ground Floor

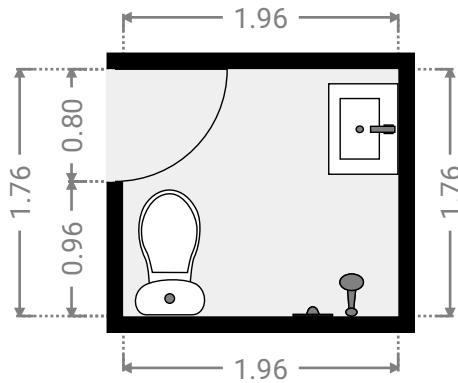
WIDTH: 3.88 m • LENGTH: 5.40 m
AREA: 18.52 m² • PERIMETER: 18.56 m



FLOORS: 1

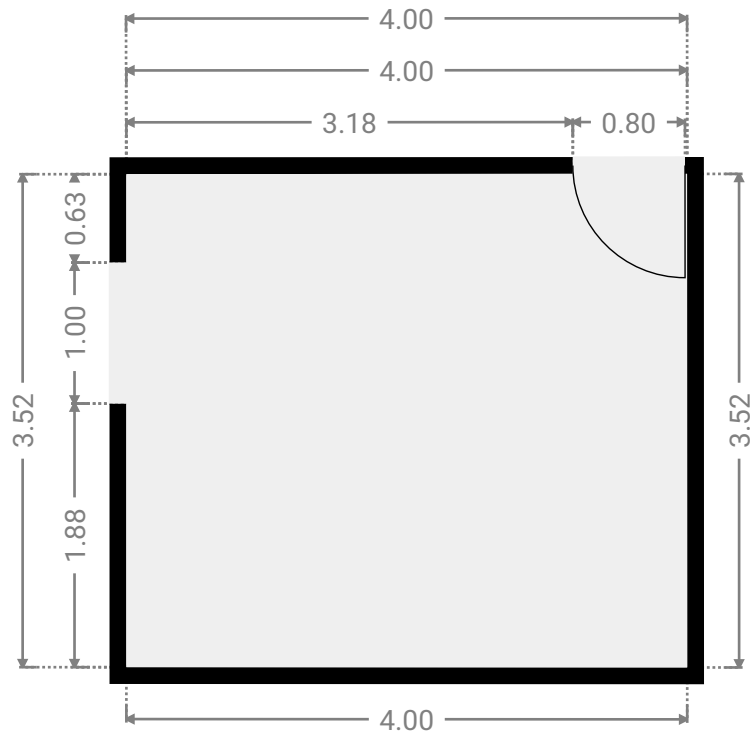
▼ **Bathroom**
Ground Floor

WIDTH: 1.96 m • LENGTH: 1.76 m
AREA: 3.45 m² • PERIMETER: 7.44 m



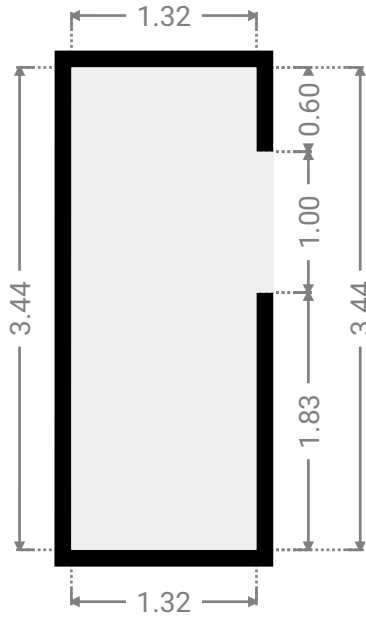
▼ **Bedroom**
Ground Floor

WIDTH: 4.00 m • LENGTH: 3.52 m
AREA: 14.07 m² • PERIMETER: 15.03 m



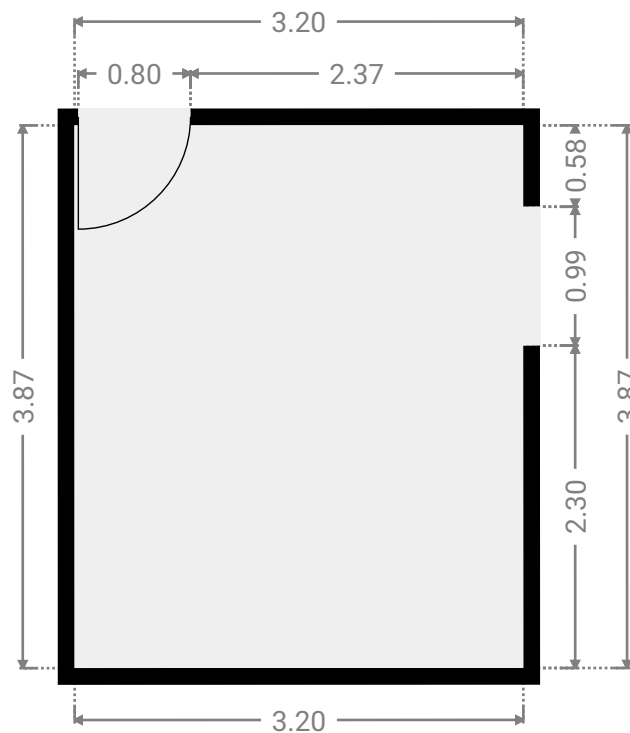
▼ **Closet**
Ground Floor

WIDTH: 1.32 m • LENGTH: 3.44 m
AREA: 4.54 m² • PERIMETER: 9.52 m



▼ **Bedroom**
Ground Floor

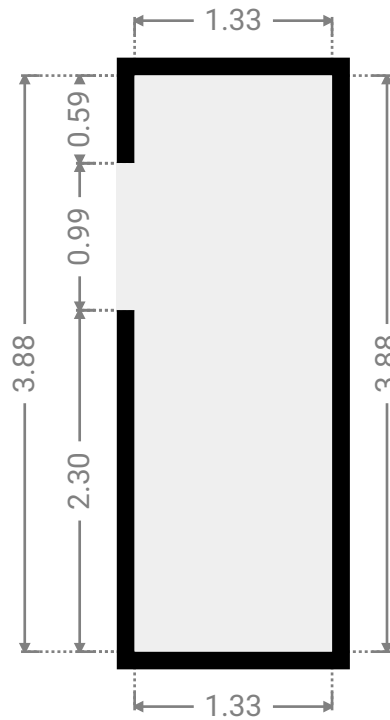
WIDTH: 3.20 m • LENGTH: 3.87 m
AREA: 12.39 m² • PERIMETER: 14.14 m



FLOORS: 1

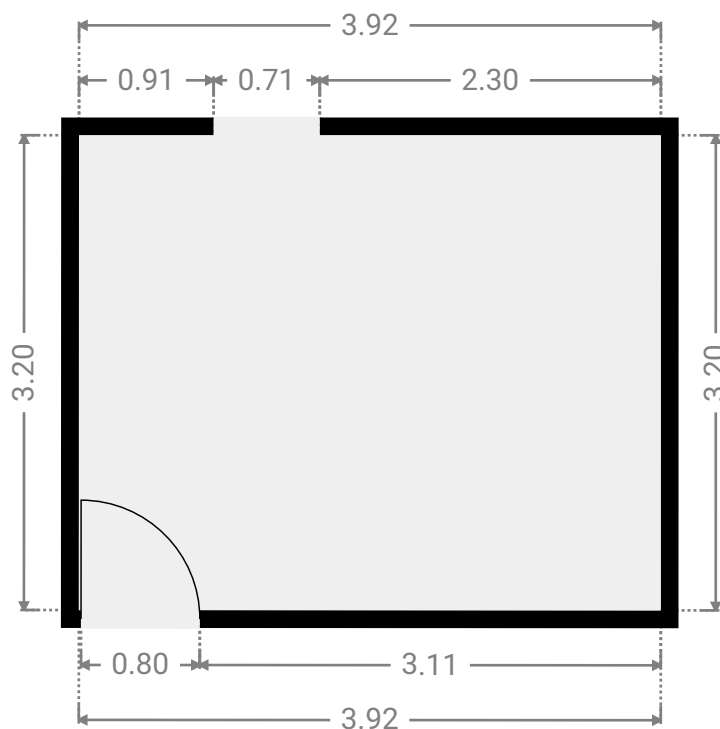
▼ **Closet**
Ground Floor

WIDTH: 1.33 m • LENGTH: 3.88 m
AREA: 5.16 m² • PERIMETER: 10.42 m



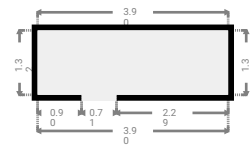
▼ **Bedroom**
Ground Floor

WIDTH: 3.92 m • LENGTH: 3.20 m
AREA: 12.54 m² • PERIMETER: 14.24 m



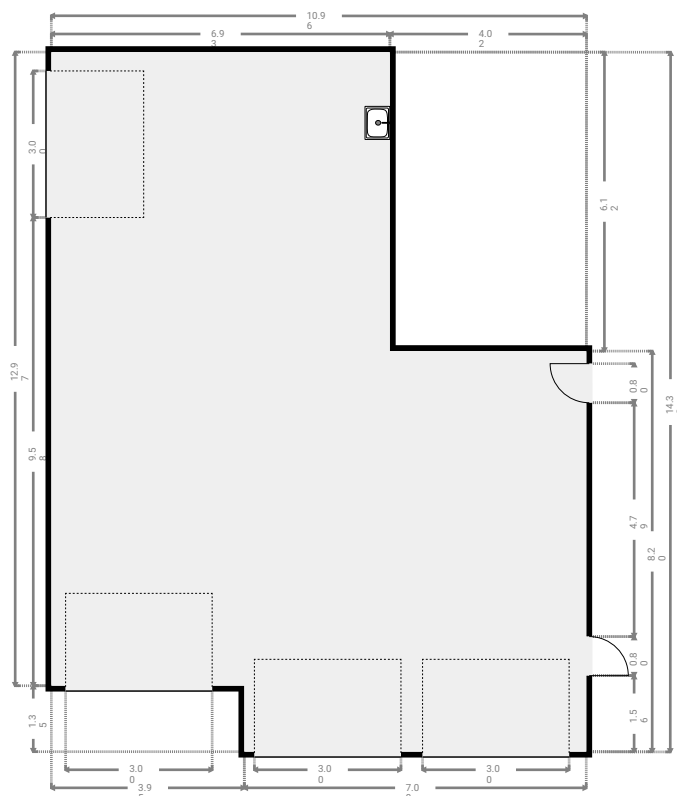
▼ Closet Ground Floor

WIDTH: 3.90 m • LENGTH: 1.32 m
AREA: 5.15 m² • PERIMETER: 10.44 m



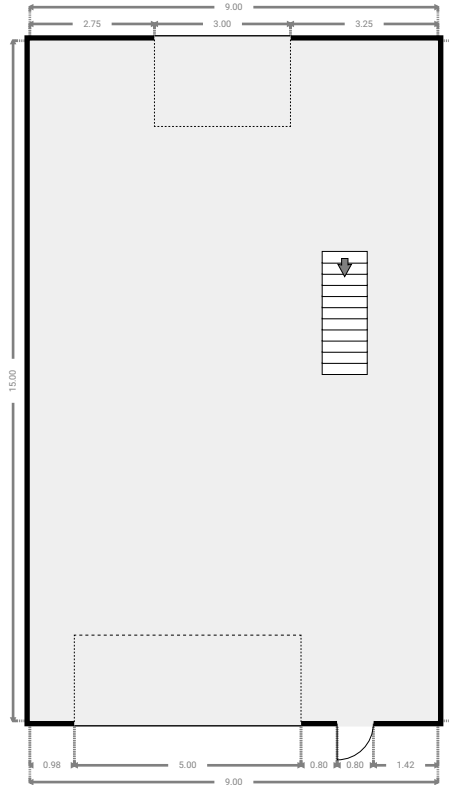
▼ Garage Ground Floor

WIDTH: 10.96 m • LENGTH: 14.32 m
AREA: 126.89 m² • PERIMETER: 50.54 m



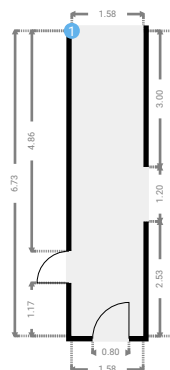
▼ **Garage**
Ground Floor

WIDTH: 9.00 m • LENGTH: 15.00 m
AREA: 135.00 m² • PERIMETER: 48.00 m



▼ **Hall**
Ground Floor

WIDTH: 1.58 m • LENGTH: 6.73 m
AREA: 10.63 m² • PERIMETER: 16.62 m



▼ Hall/Ground Floor

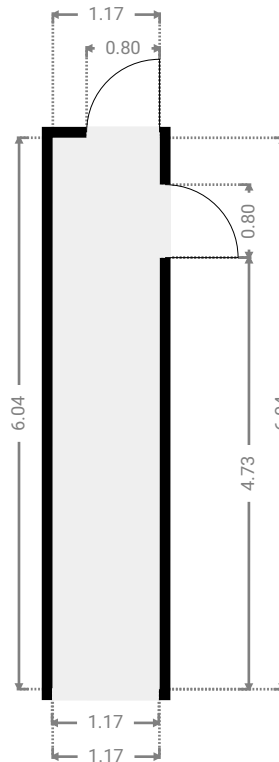
1 OPENING

Height
0.00 m



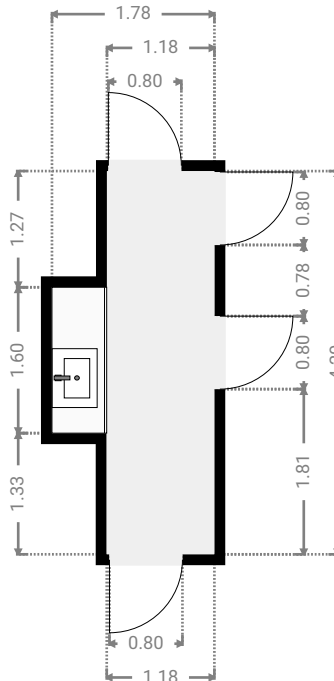
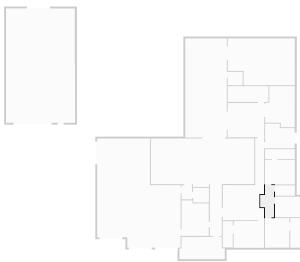
▼ **Hall**
Ground Floor

WIDTH: 1.17 m • LENGTH: 6.04 m
AREA: 7.07 m² • PERIMETER: 14.43 m



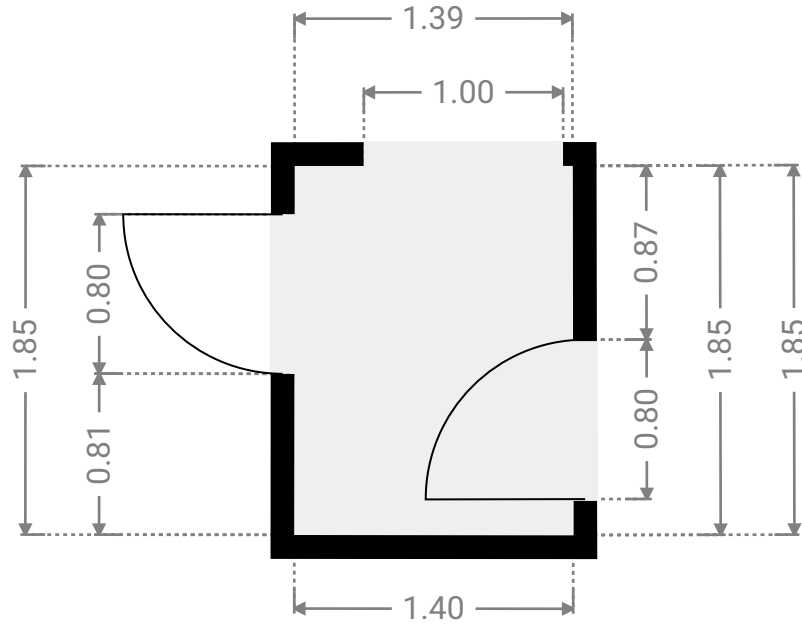
▼ **Hall**
Ground Floor

WIDTH: 1.78 m • LENGTH: 4.20 m
AREA: 5.92 m² • PERIMETER: 11.96 m



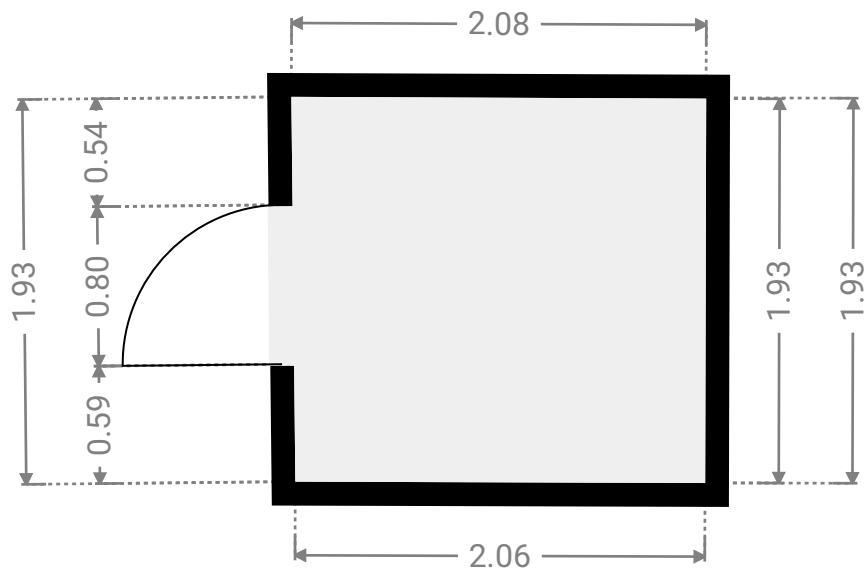
▼ **Hall**
Ground Floor

WIDTH: 1.40 m • LENGTH: 1.85 m
AREA: 2.59 m² • PERIMETER: 6.50 m



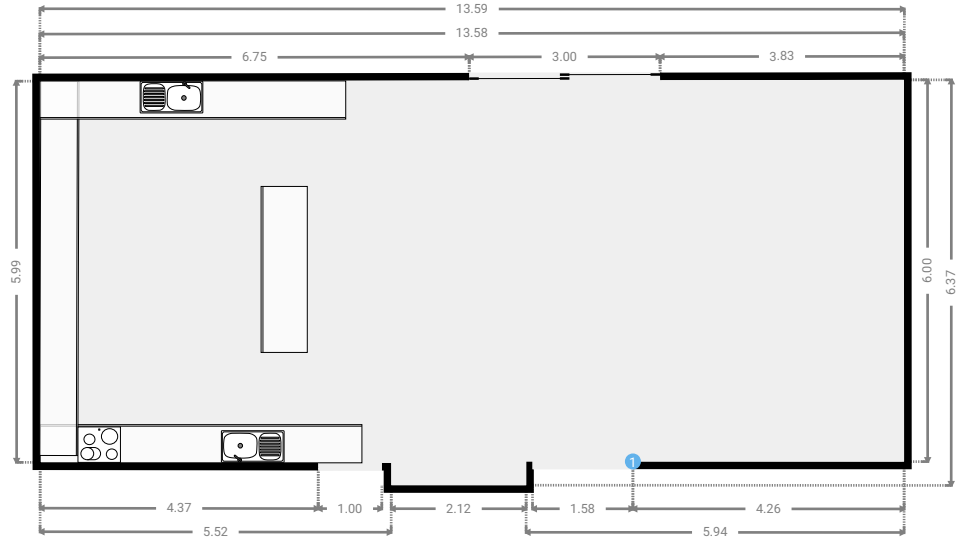
▼ **Closet**
Ground Floor

WIDTH: 2.08 m • LENGTH: 1.93 m
AREA: 3.99 m² • PERIMETER: 8.00 m



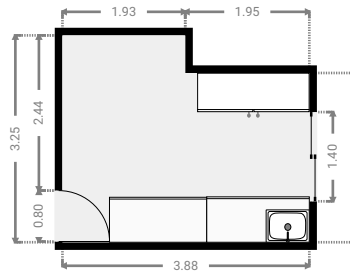
▼ Kitchen
Ground Floor

WIDTH: 13.59 m • LENGTH: 6.37 m
AREA: 82.20 m² • PERIMETER: 39.87 m



▼ Laundry Room
Ground Floor

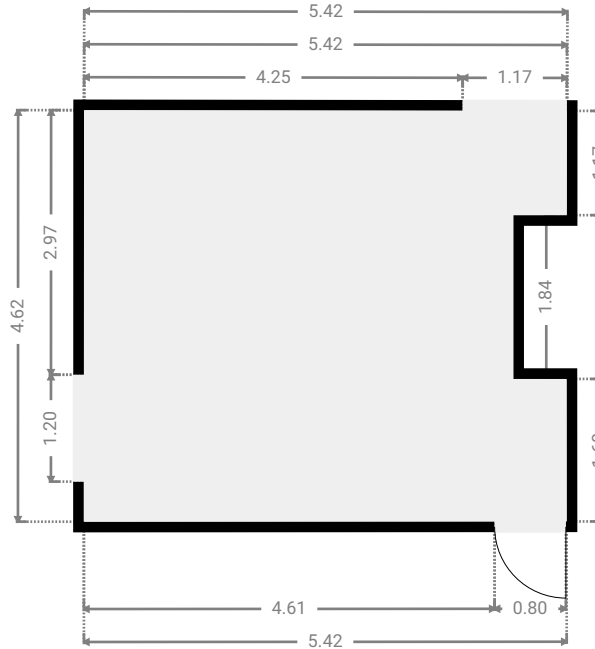
WIDTH: 3.88 m • LENGTH: 3.25 m
AREA: 11.46 m² • PERIMETER: 14.26 m



FLOORS: 1

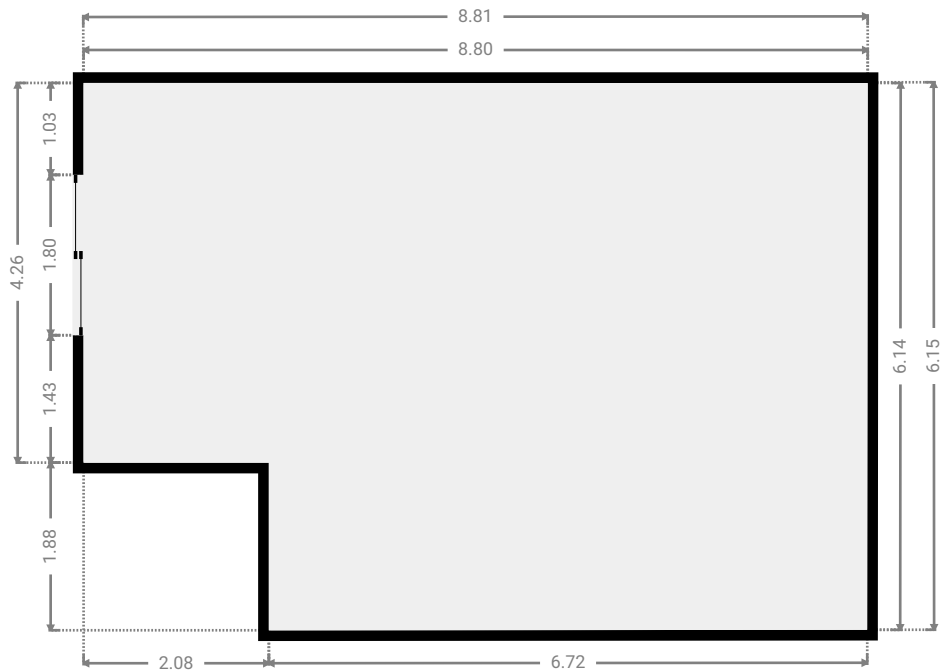
▼ Living Room
Ground Floor

WIDTH: 5.42 m • LENGTH: 4.62 m
AREA: 23.90 m² • PERIMETER: 21.27 m



▼ Living Room
Ground Floor

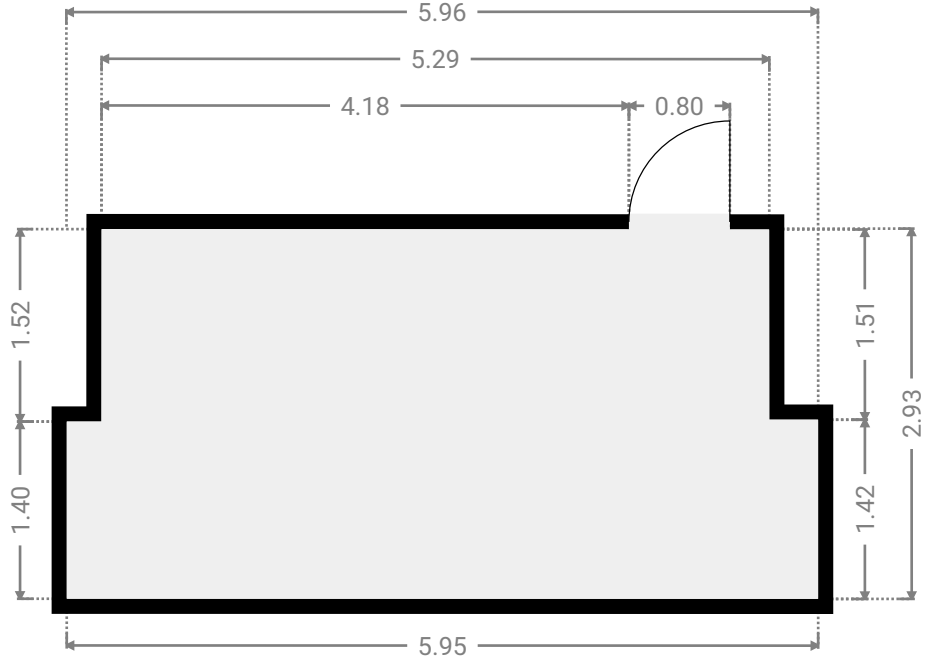
WIDTH: 8.81 m • LENGTH: 6.15 m
AREA: 50.14 m² • PERIMETER: 29.88 m



FLOORS: 1

▼ **Other**
Ground Floor

WIDTH: 5.96 m • LENGTH: 2.93 m
AREA: 16.43 m² • PERIMETER: 17.76 m



▼ **Other**
Ground Floor

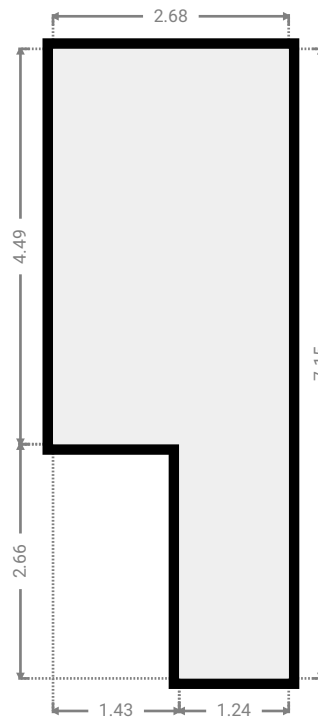
WIDTH: 6.20 m • LENGTH: 4.50 m
AREA: 27.90 m² • PERIMETER: 21.40 m



FLOORS: 1

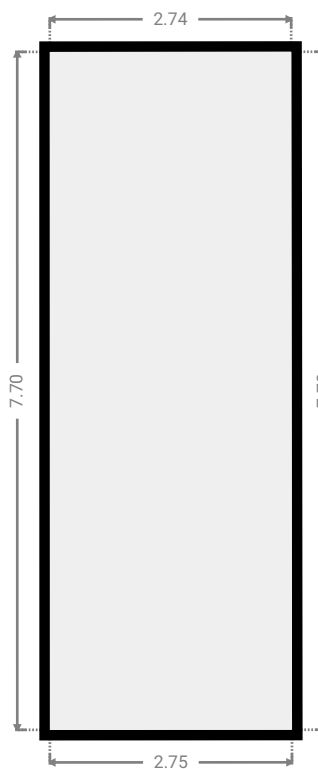
▼ Other Ground Floor

WIDTH: 2.68 m • LENGTH: 7.15 m
AREA: 15.33 m² • PERIMETER: 19.65 m



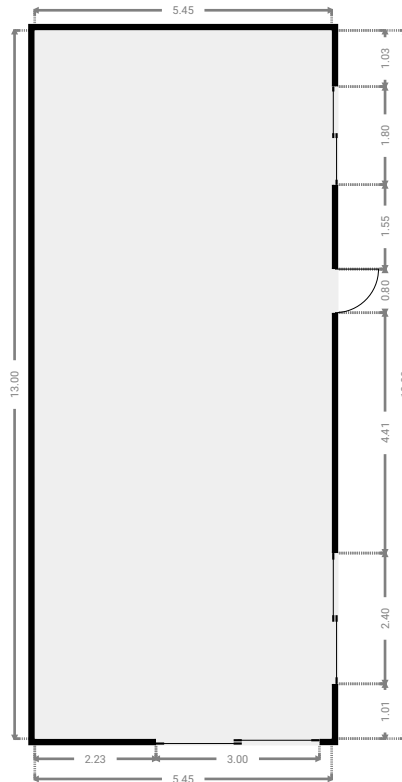
▼ Other Ground Floor

WIDTH: 2.75 m • LENGTH: 7.70 m
AREA: 21.14 m² • PERIMETER: 20.89 m



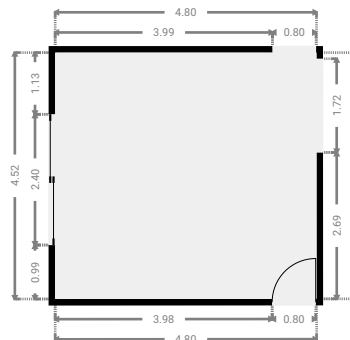
▼ Other
Ground Floor

WIDTH: 5.45 m • LENGTH: 13.00 m
AREA: 70.86 m² • PERIMETER: 36.90 m



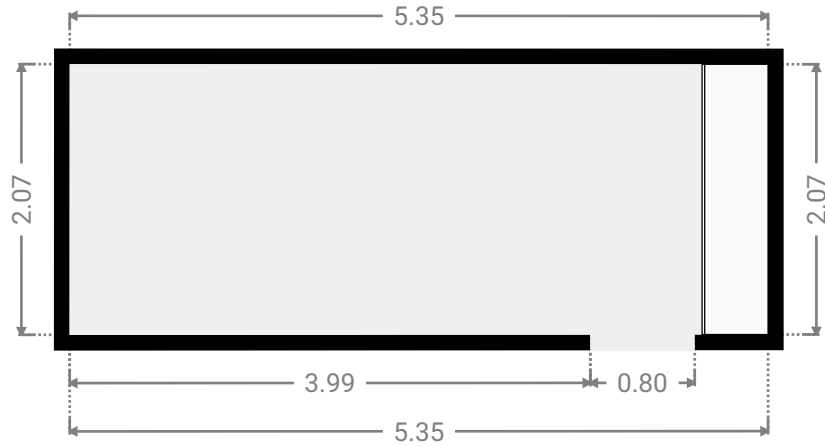
▼ Primary Bedroom
Ground Floor

WIDTH: 4.80 m • LENGTH: 4.52 m
AREA: 21.70 m² • PERIMETER: 18.64 m



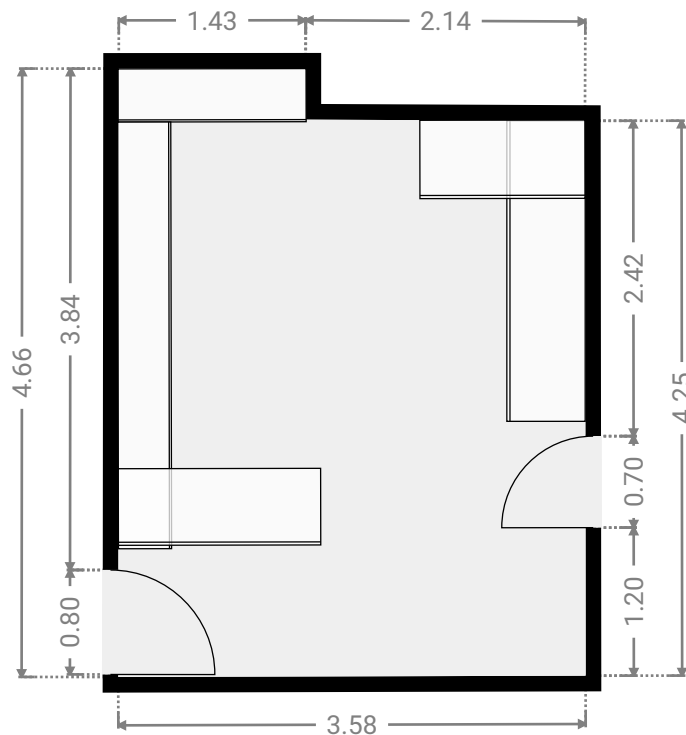
▼ **Closet**
Ground Floor

WIDTH: 5.35 m • LENGTH: 2.07 m
AREA: 11.08 m² • PERIMETER: 14.84 m



▼ **Study**
Ground Floor

WIDTH: 3.58 m • LENGTH: 4.66 m
AREA: 15.80 m² • PERIMETER: 16.45 m



▼ Toilet
Ground Floor

WIDTH: 2.62 m • LENGTH: 1.37 m
AREA: 3.58 m² • PERIMETER: 7.97 m

