

31 Rosewood Avenue

SUBMITTED BY

Ray White Rockhampton Casey
stockers@cqoz.com

CREATED ON

2021-12-13

Floors

1

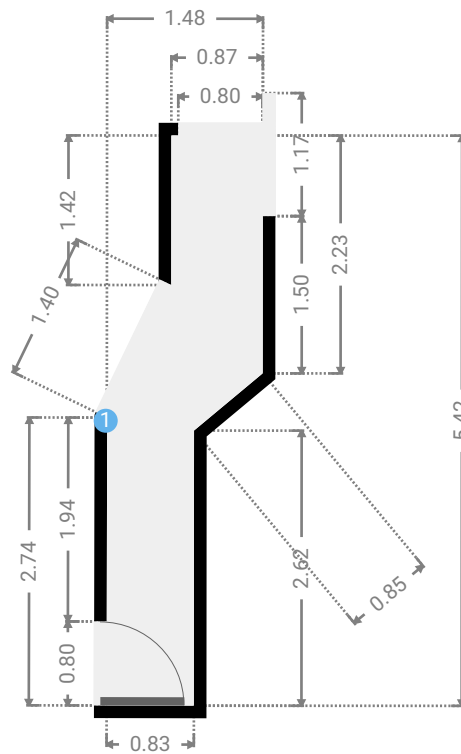
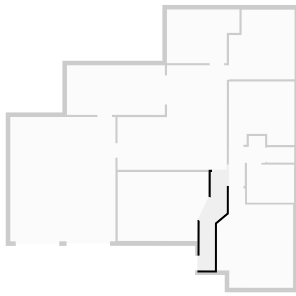
▼ Ground Floor



FLOORS: 1

▼ **Hall**
Ground Floor

WIDTH: 1.48 m • LENGTH: 5.42 m
AREA: 4.89 m² • PERIMETER: 12.99 m



▼ **Hall/Ground Floor**

1 **OPENING**

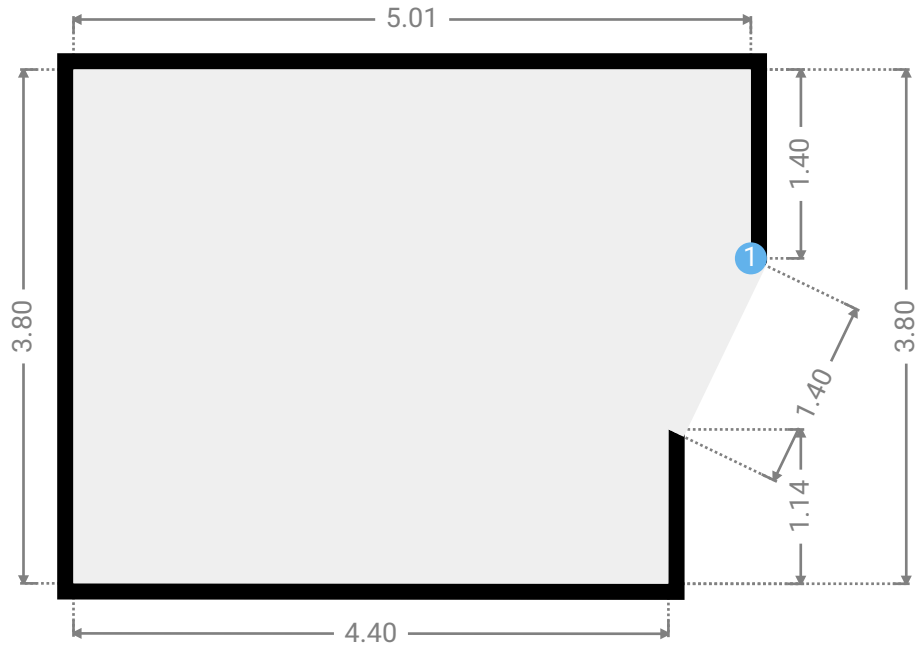
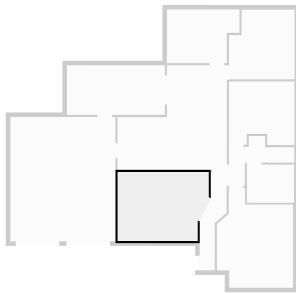
Height
0.00 m



FLOORS: 1

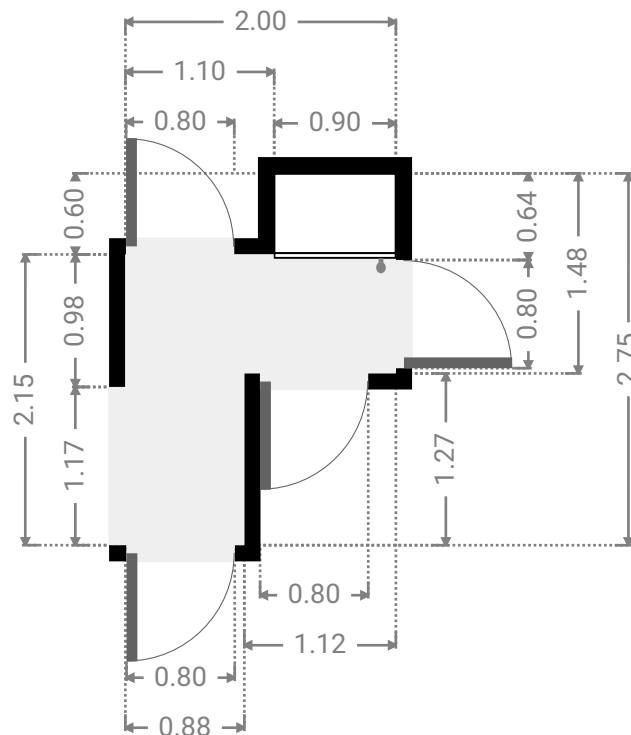
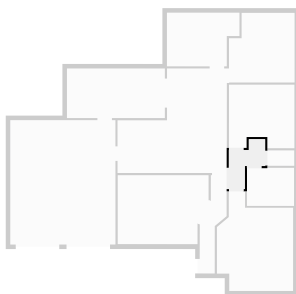
▼ Living Room
Ground Floor

WIDTH: 5.01 m • LENGTH: 3.80 m
AREA: 17.97 m² • PERIMETER: 17.15 m



▼ Hall
Ground Floor

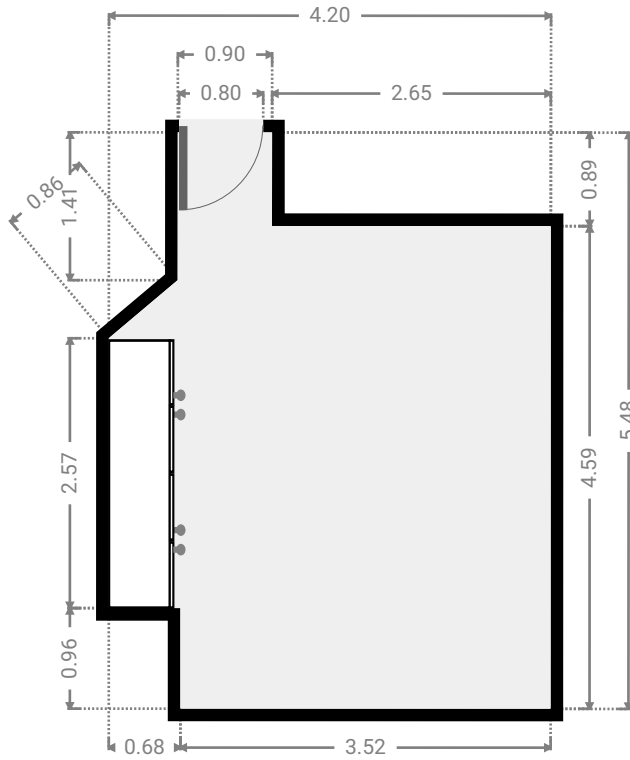
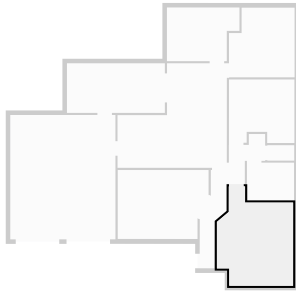
WIDTH: 2.00 m • LENGTH: 2.75 m
AREA: 3.42 m² • PERIMETER: 9.50 m



FLOORS: 1

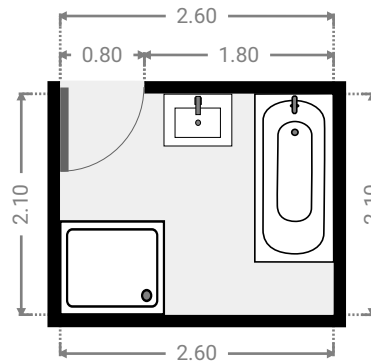
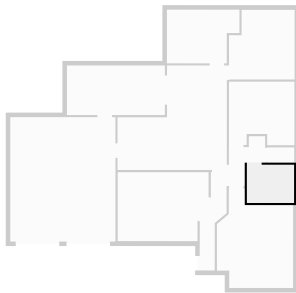
▼ Master Bedroom
Ground Floor

WIDTH: 4.20 m • LENGTH: 5.48 m
AREA: 18.91 m² • PERIMETER: 19.01 m



▼ Bathroom
Ground Floor

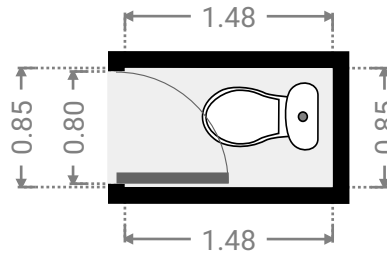
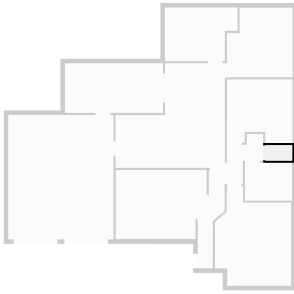
WIDTH: 2.60 m • LENGTH: 2.10 m
AREA: 5.46 m² • PERIMETER: 9.40 m



FLOORS: 1

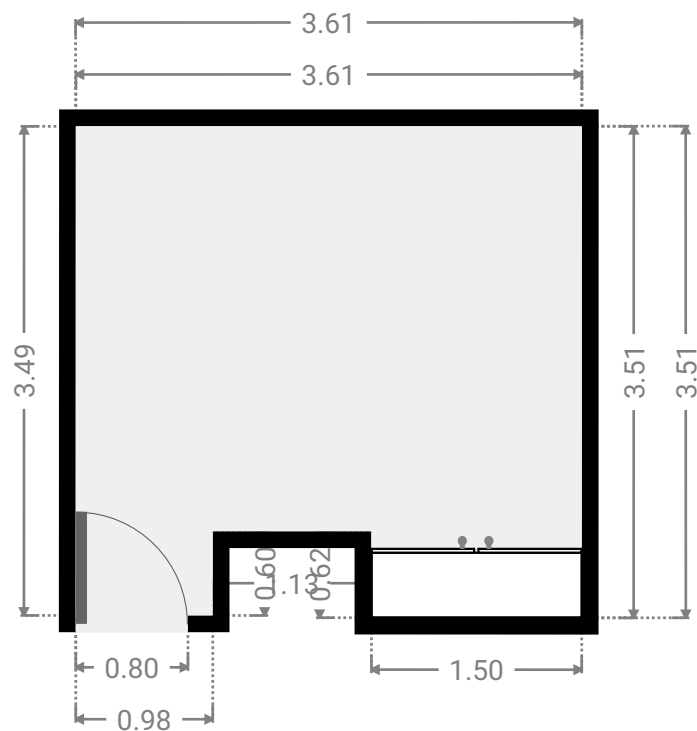
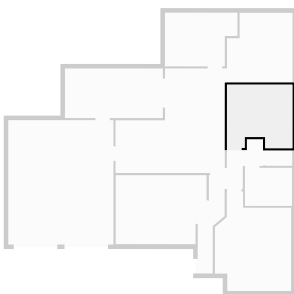
▼ **Toilet**
Ground Floor

WIDTH: 1.48 m • LENGTH: 0.85 m
AREA: 1.26 m² • PERIMETER: 4.66 m



▼ **Bedroom**
Ground Floor

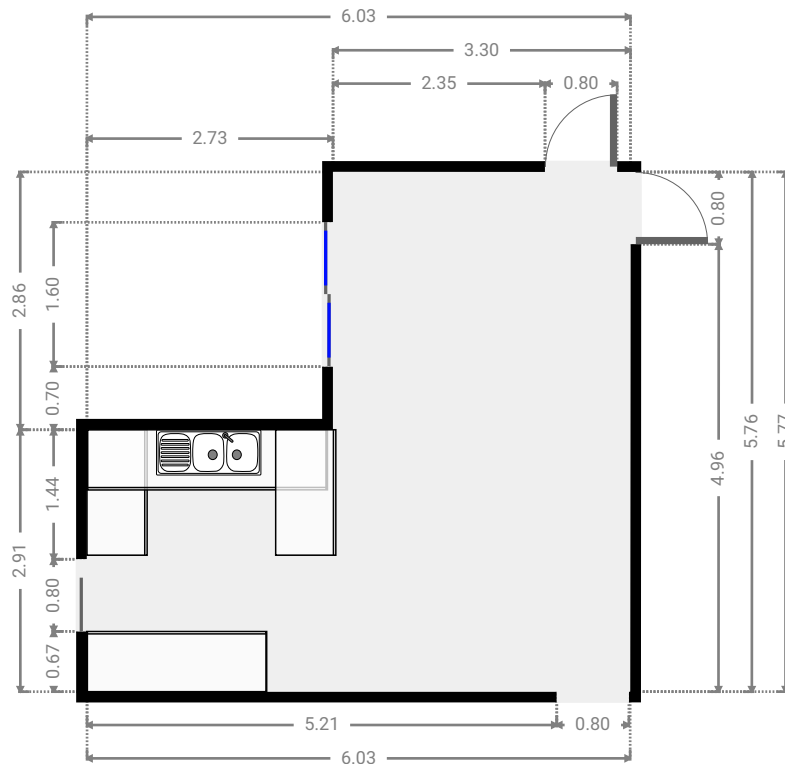
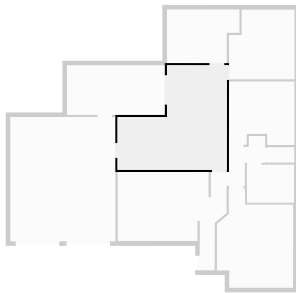
WIDTH: 3.61 m • LENGTH: 3.51 m
AREA: 11.93 m² • PERIMETER: 15.43 m



FLOORS: 1

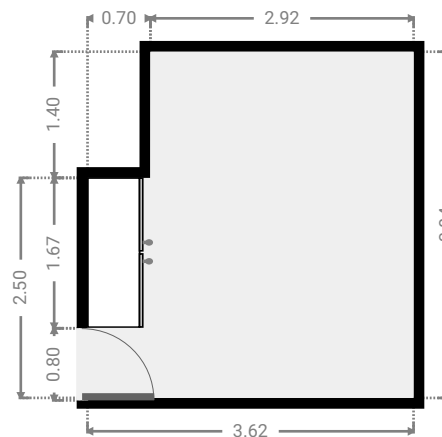
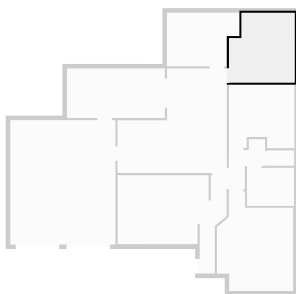
▼ **Kitchen**
Ground Floor

WIDTH: 6.03 m • LENGTH: 5.77 m
AREA: 26.94 m² • PERIMETER: 23.58 m



▼ **Bedroom**
Ground Floor

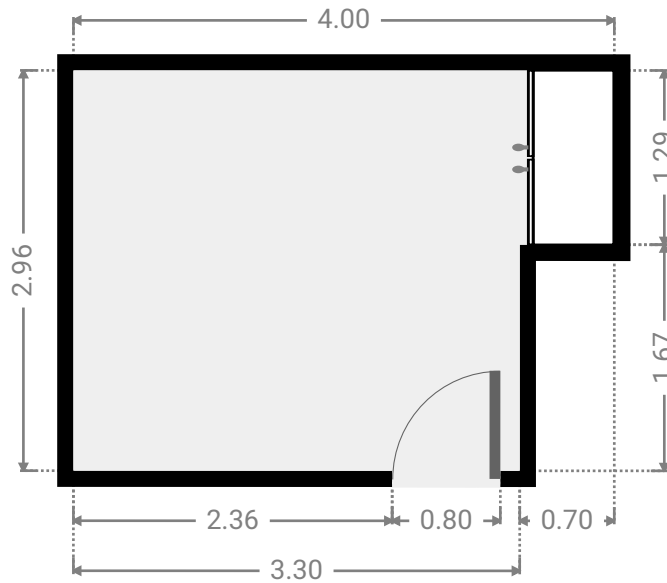
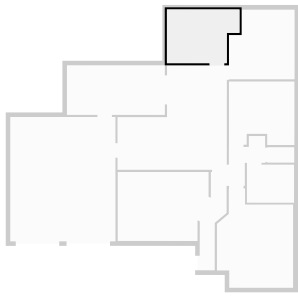
WIDTH: 3.62 m • LENGTH: 3.84 m
AREA: 12.92 m² • PERIMETER: 14.92 m



FLOORS: 1

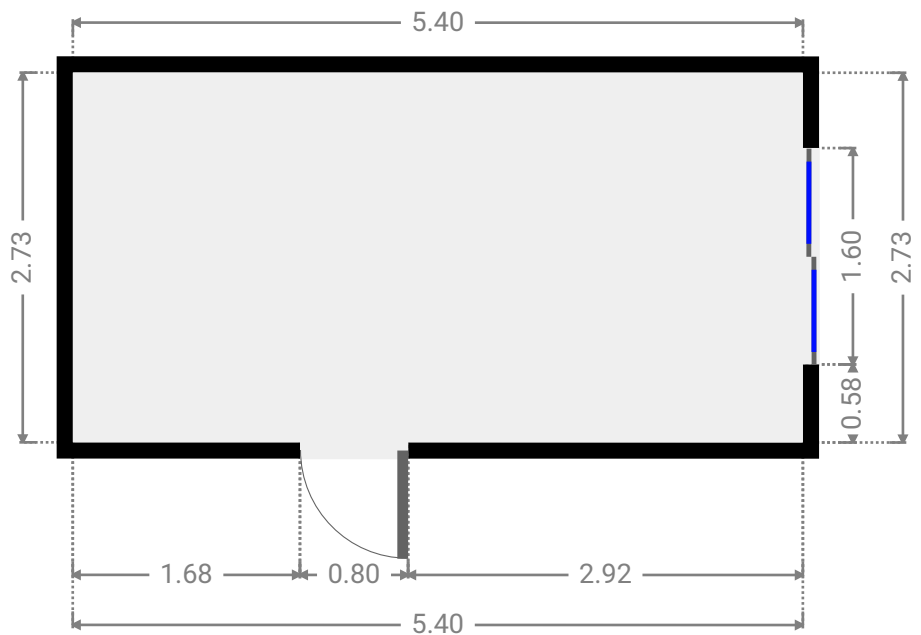
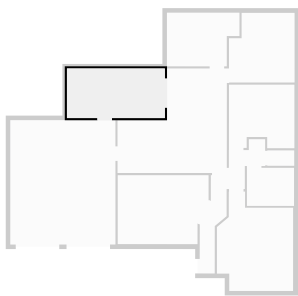
▼ **Bedroom**
Ground Floor

WIDTH: 4.00 m • LENGTH: 2.96 m
AREA: 10.67 m² • PERIMETER: 13.92 m



▼ **Other**
Ground Floor

WIDTH: 5.40 m • LENGTH: 2.73 m
AREA: 14.77 m² • PERIMETER: 16.27 m



FLOORS: 1

▼ **Garage**
Ground Floor

WIDTH: 5.80 m • LENGTH: 6.86 m
AREA: 39.78 m² • PERIMETER: 25.32 m

