

# 31 Reservoir Street

**SUBMITTED BY**

Ray White Rockhampton Casey  
stockers@cqoz.com

---

**CREATED ON**

2022-08-10

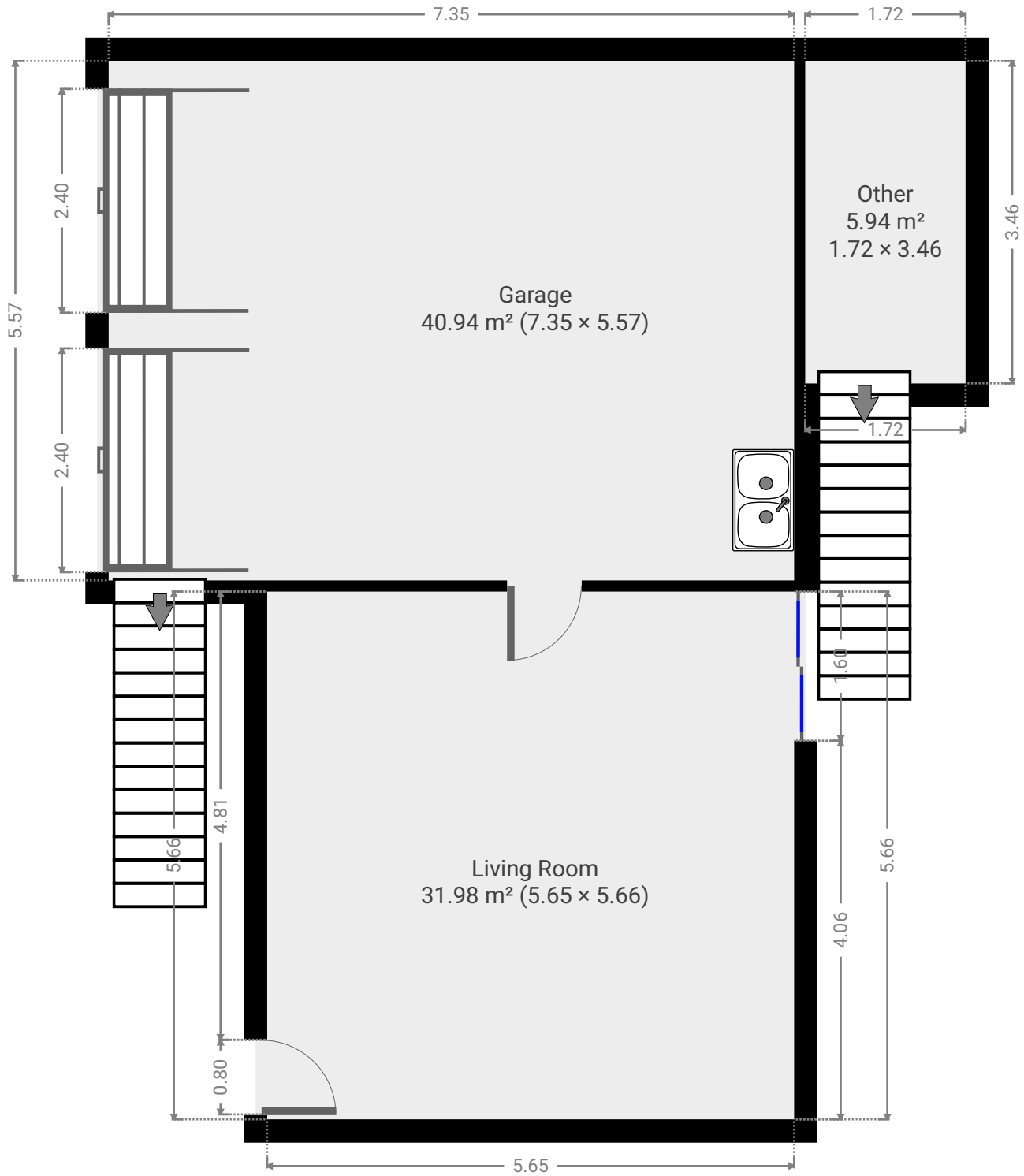
---

**Floors**

2

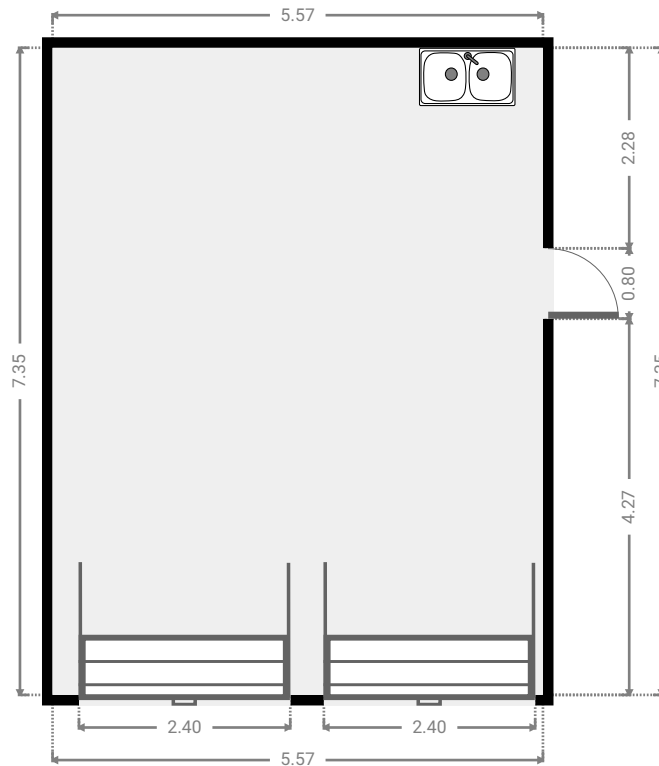
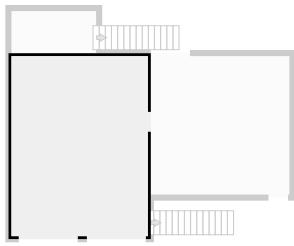
---

## ▼ Ground Floor



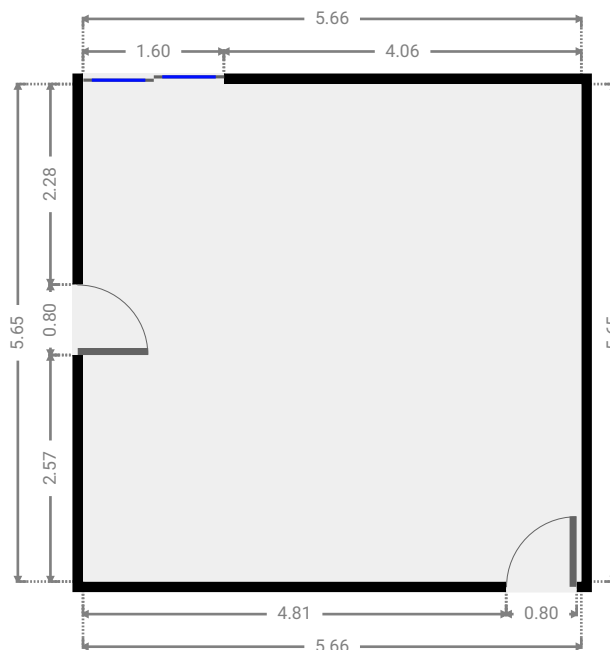
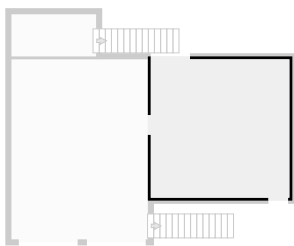
## ▼ Garage Ground Floor

WIDTH: 5.57 m • LENGTH: 7.35 m  
AREA: 40.94 m<sup>2</sup> • PERIMETER: 25.84 m



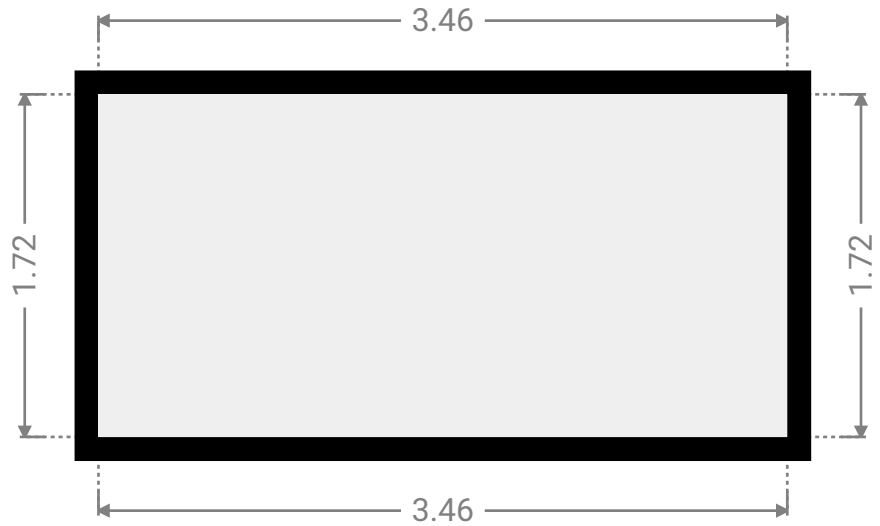
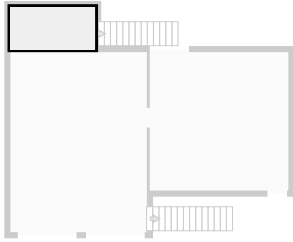
## ▼ Living Room Ground Floor

WIDTH: 5.66 m • LENGTH: 5.65 m  
AREA: 31.98 m<sup>2</sup> • PERIMETER: 22.62 m

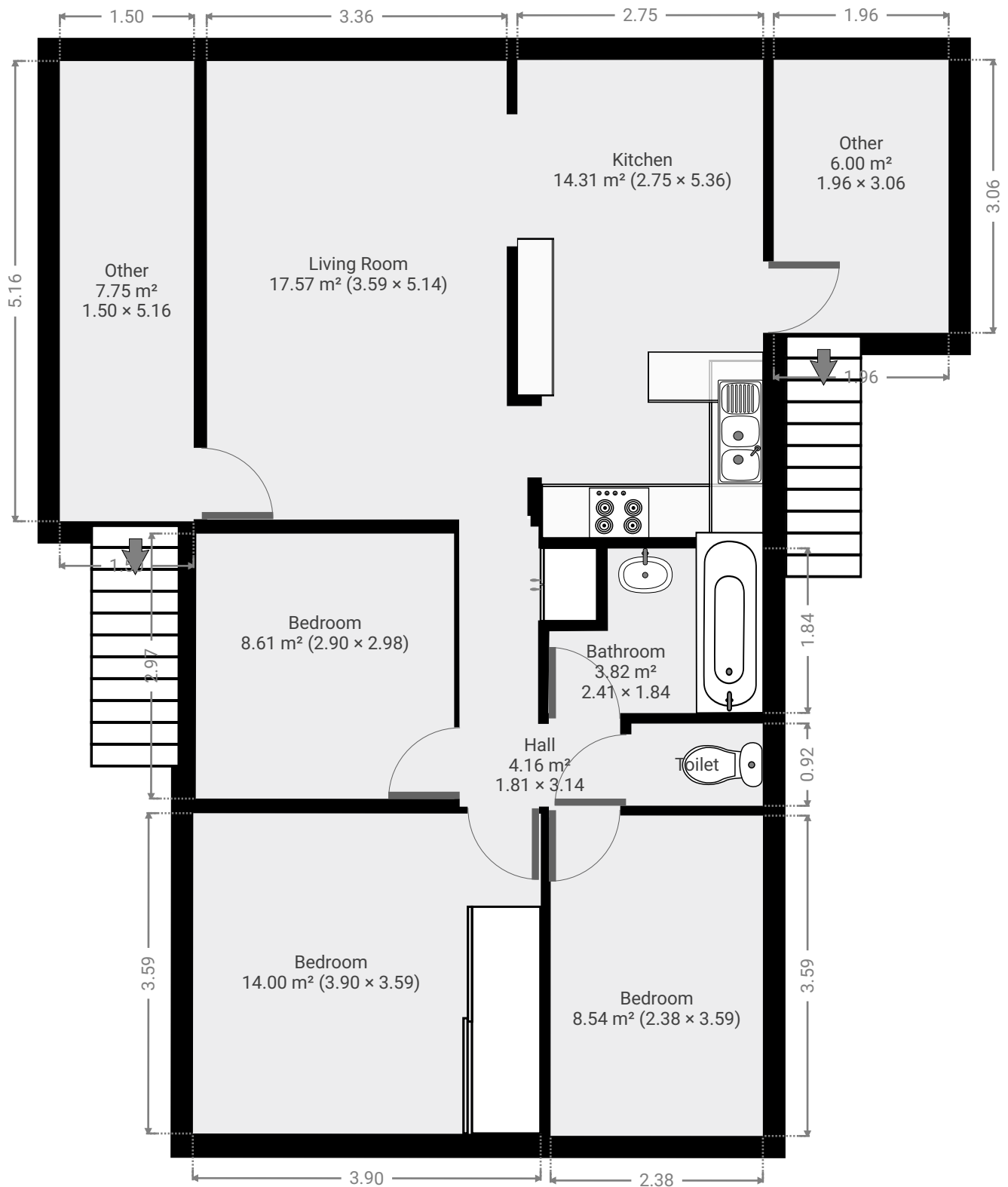


▼ Other  
Ground Floor

WIDTH: 3.46 m • LENGTH: 1.72 m  
AREA: 5.94 m<sup>2</sup> • PERIMETER: 10.35 m

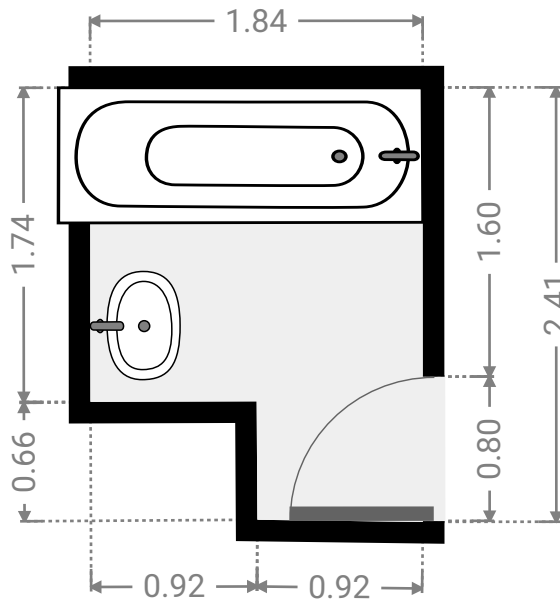
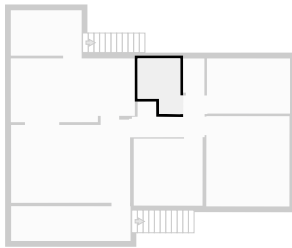


▼ 1st Floor



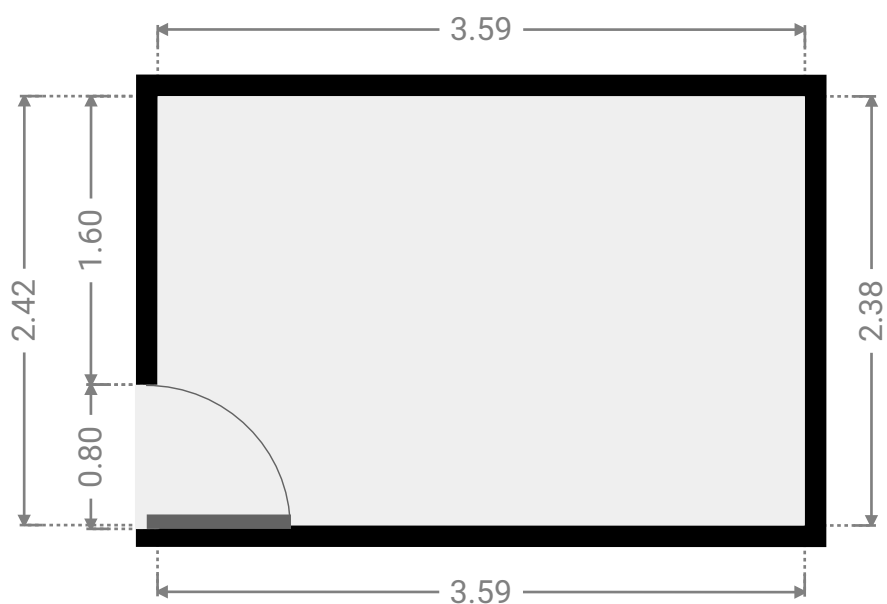
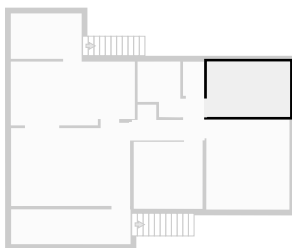
▼ **Bathroom**  
1st Floor

WIDTH: 1.84 m • LENGTH: 2.41 m  
AREA: 3.82 m<sup>2</sup> • PERIMETER: 8.49 m



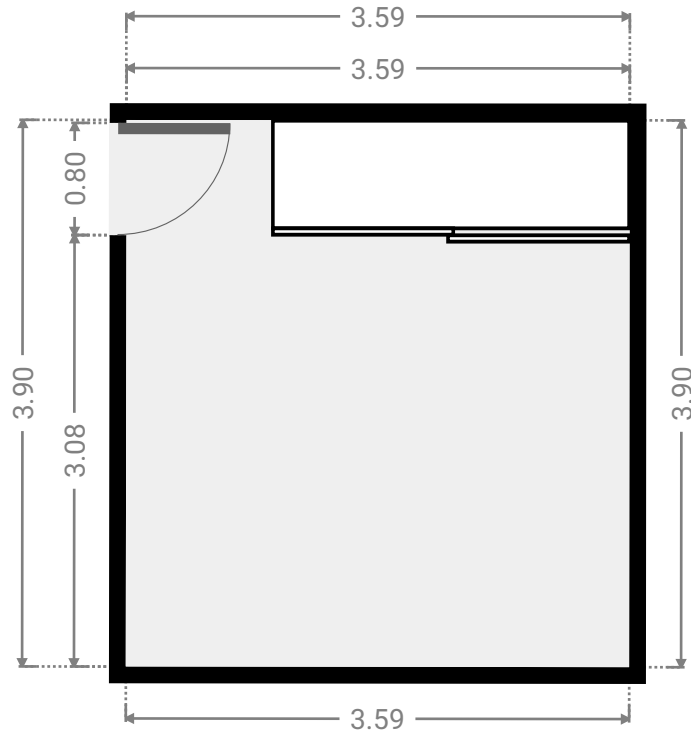
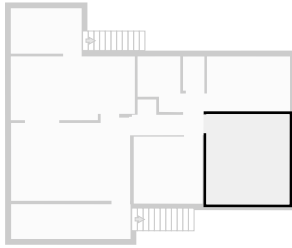
▼ **Bedroom**  
1st Floor

WIDTH: 3.59 m • LENGTH: 2.38 m  
AREA: 8.54 m<sup>2</sup> • PERIMETER: 11.94 m



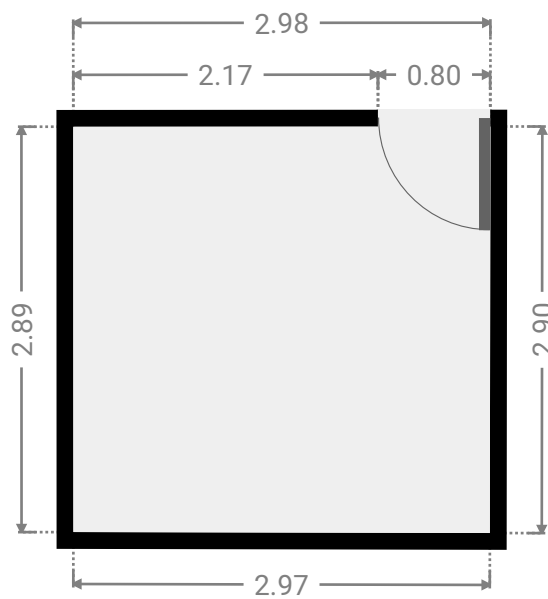
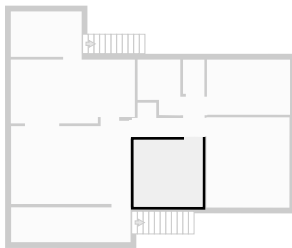
▼ **Bedroom**  
1st Floor

WIDTH: 3.59 m • LENGTH: 3.90 m  
AREA: 14.00 m<sup>2</sup> • PERIMETER: 14.98 m



▼ **Bedroom**  
1st Floor

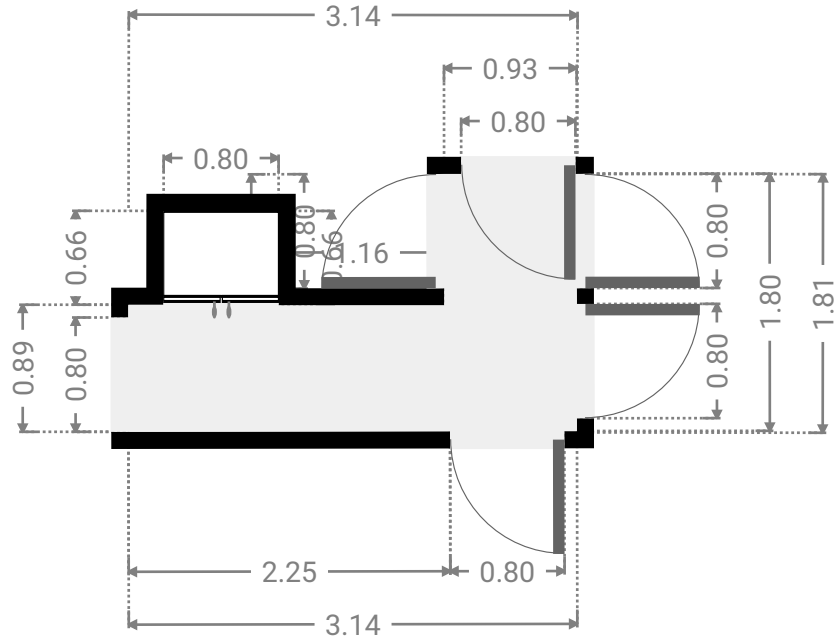
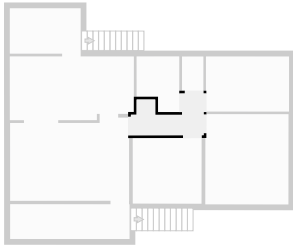
WIDTH: 2.98 m • LENGTH: 2.90 m  
AREA: 8.61 m<sup>2</sup> • PERIMETER: 11.74 m



FLOORS: 2

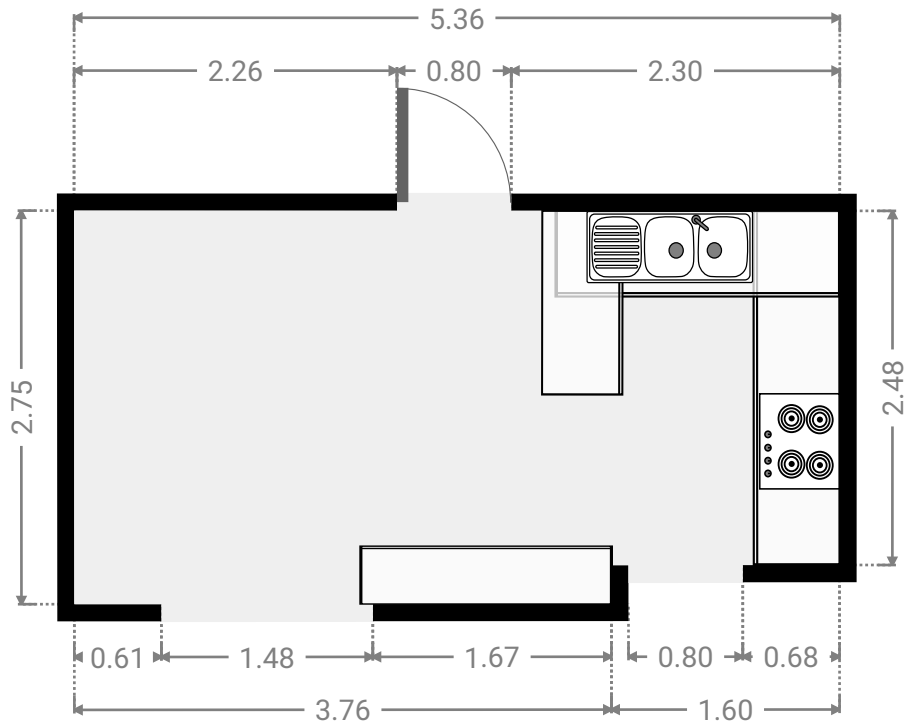
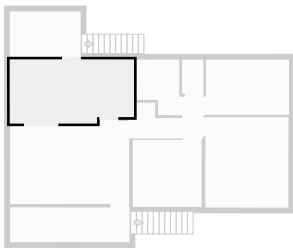
▼ **Hall**  
1st Floor

WIDTH: 3.14 m • LENGTH: 1.81 m  
AREA: 4.16 m<sup>2</sup> • PERIMETER: 11.21 m



▼ **Kitchen**  
1st Floor

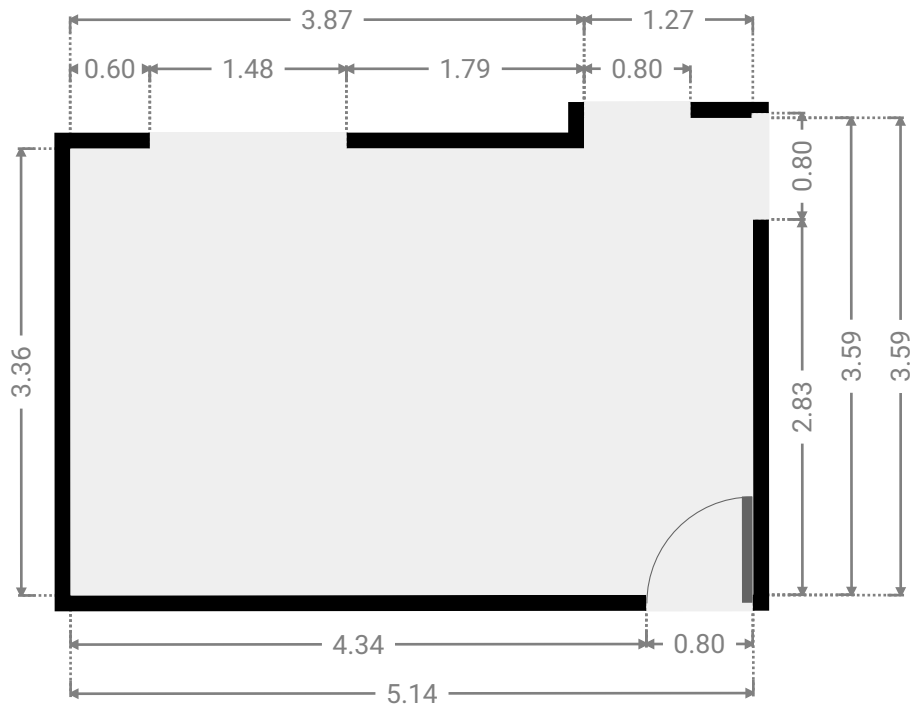
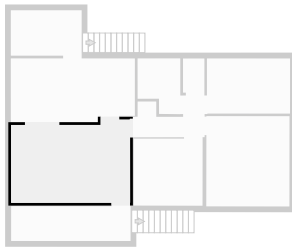
WIDTH: 5.36 m • LENGTH: 2.75 m  
AREA: 14.31 m<sup>2</sup> • PERIMETER: 16.22 m





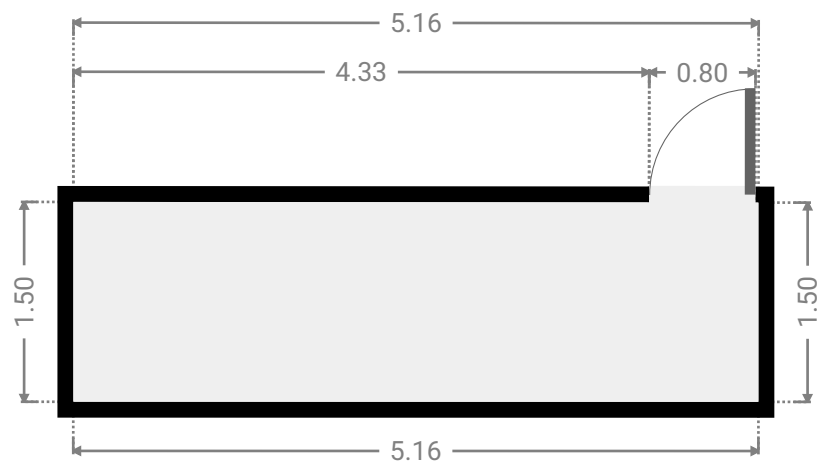
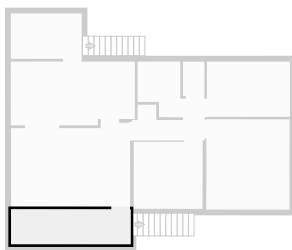
▼ **Living Room**  
1st Floor

WIDTH: 5.14 m • LENGTH: 3.59 m  
AREA: 17.57 m<sup>2</sup> • PERIMETER: 17.46 m



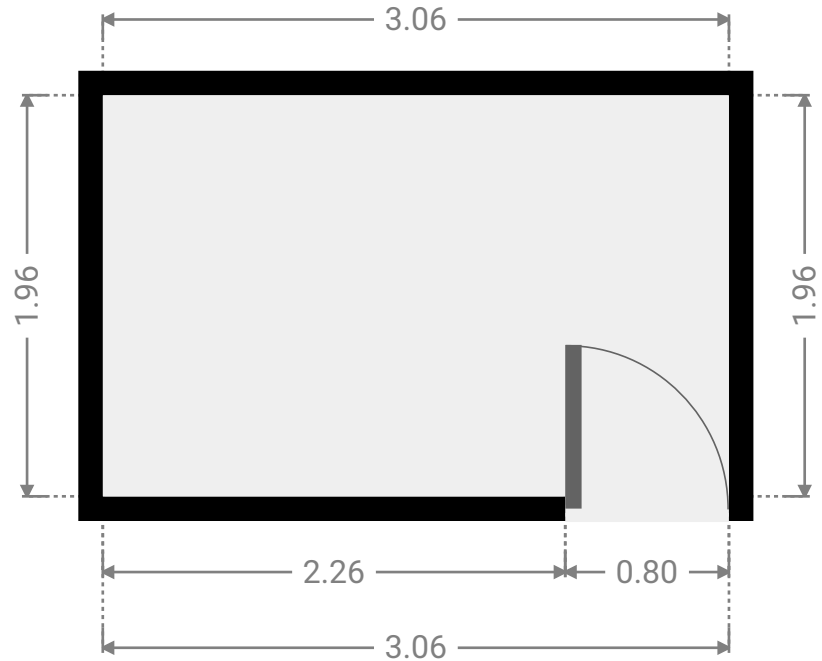
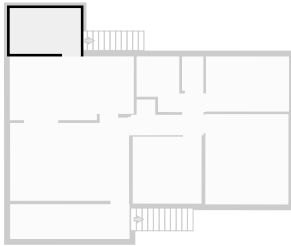
▼ **Other**  
1st Floor

WIDTH: 5.16 m • LENGTH: 1.50 m  
AREA: 7.75 m<sup>2</sup> • PERIMETER: 13.32 m



## ▼ Other 1st Floor

WIDTH: 3.06 m • LENGTH: 1.96 m  
AREA: 6.00 m<sup>2</sup> • PERIMETER: 10.04 m



## ▼ Toilet 1st Floor

WIDTH: 0.92 m • LENGTH: 1.47 m  
AREA: 1.36 m<sup>2</sup> • PERIMETER: 4.79 m

