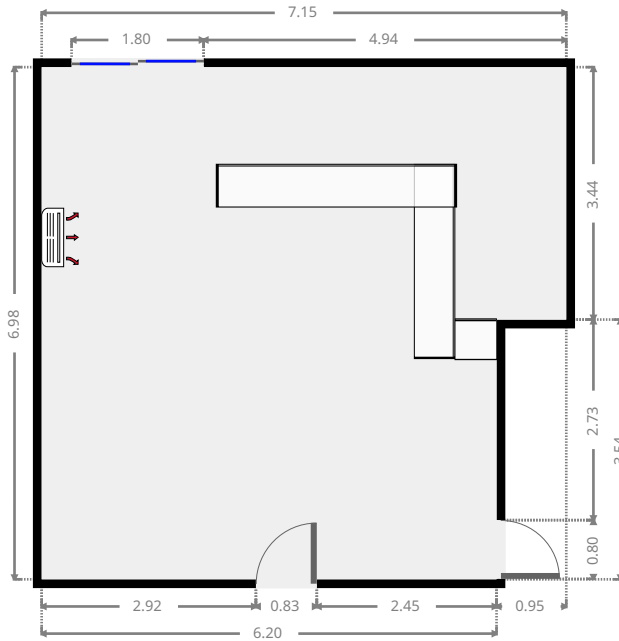
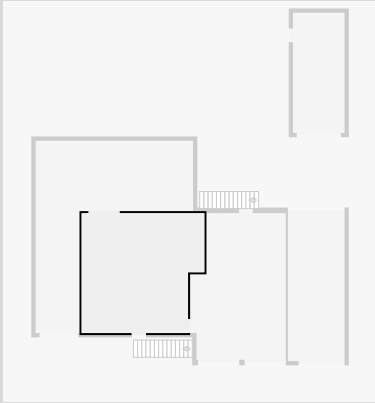


309 Duthie Ave

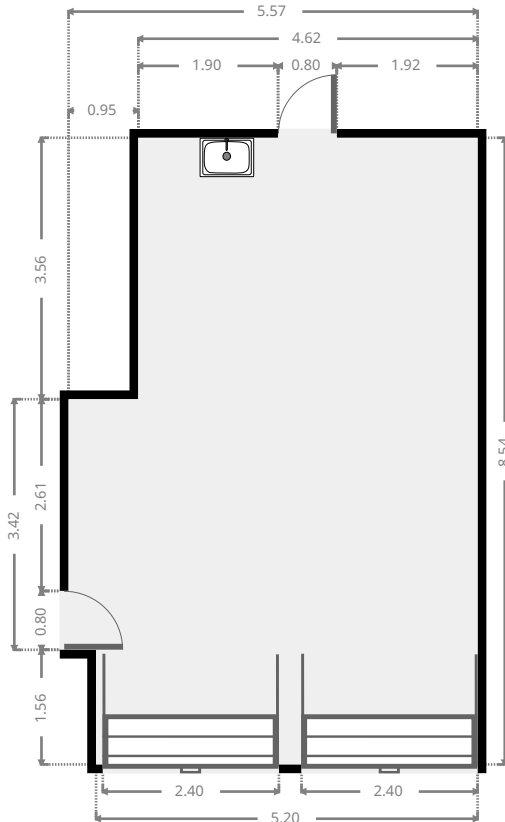
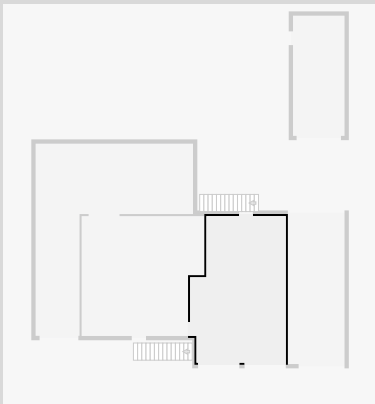
Garage

Width: 6.98 m
 Length: 7.15 m
 Area: 46.54 m²
 Perimeter: 28.26 m

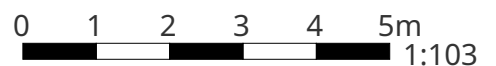


Garage

Width: 5.57 m
 Length: 8.54 m
 Area: 43.63 m²
 Perimeter: 28.23 m



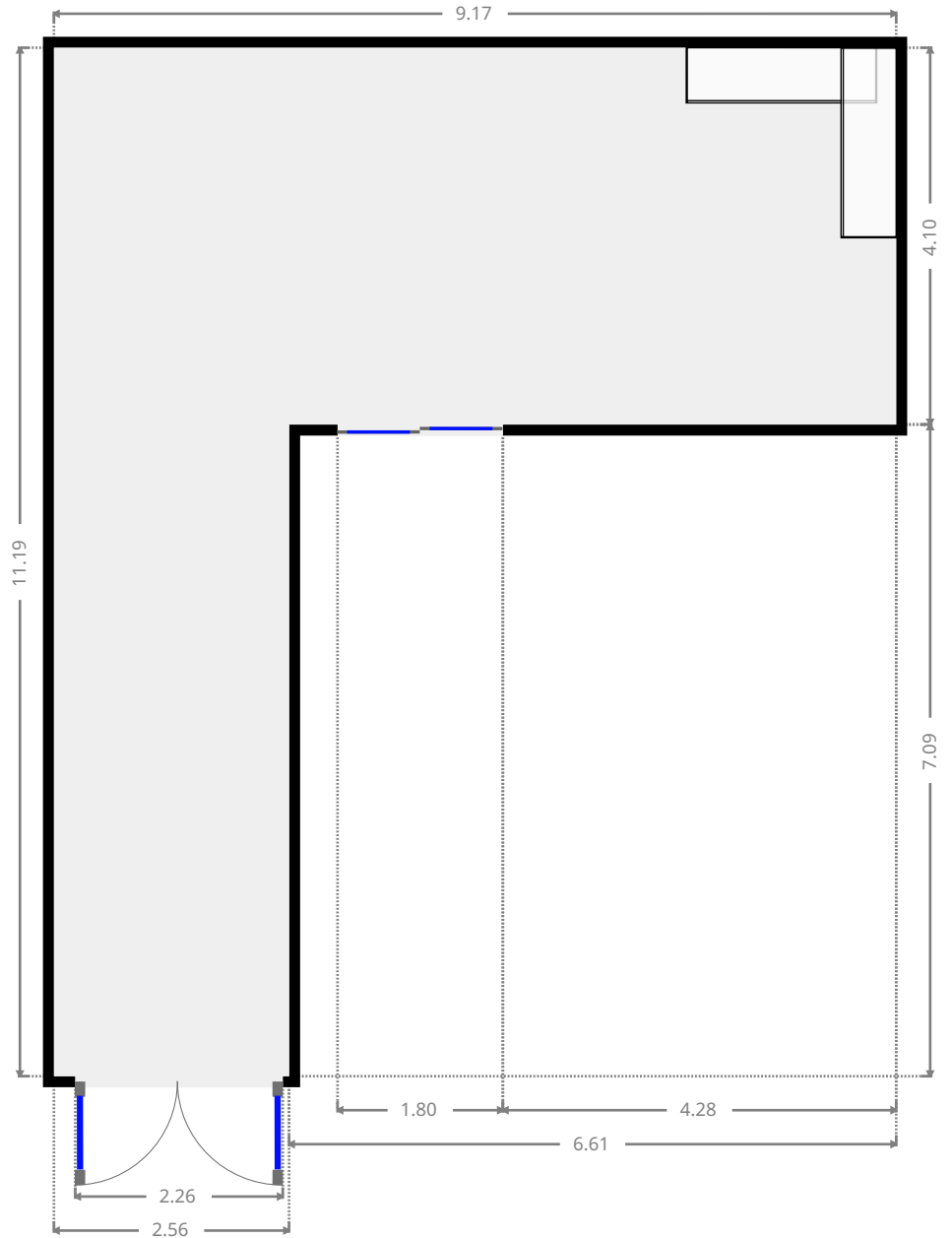
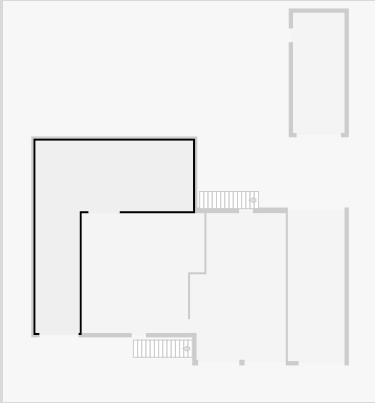
THIS FLOORPLAN IS PROVIDED WITHOUT WARRANTY OF ANY KIND. SENSOPIA DISCLAIMS ANY WARRANTY INCLUDING, WITHOUT LIMITATION, SATISFACTORY QUALITY OR ACCURACY OF DIMENSIONS.



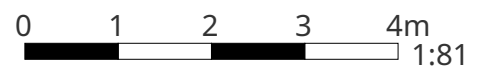
309 Duthie Ave

Other

Width: 9.17 m
Length: 11.19 m
Area: 55.75 m²
Perimeter: 40.72 m



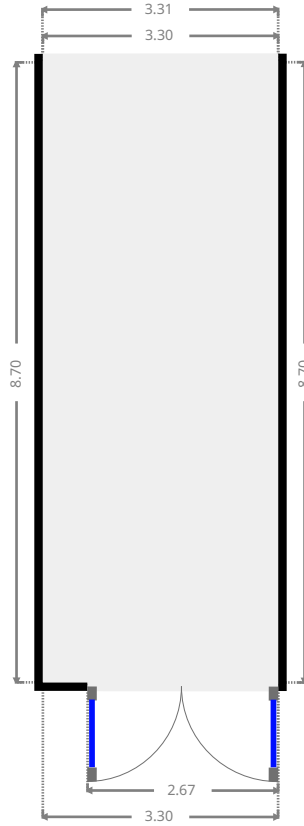
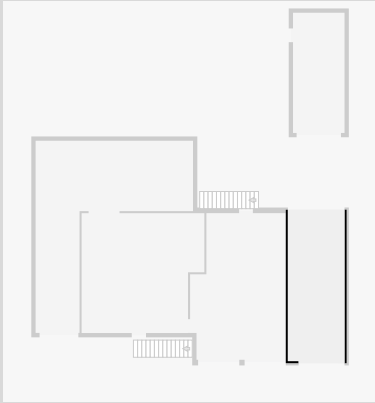
THIS FLOORPLAN IS PROVIDED WITHOUT WARRANTY OF ANY KIND. SENSOPIA DISCLAIMS ANY WARRANTY INCLUDING, WITHOUT LIMITATION, SATISFACTORY QUALITY OR ACCURACY OF DIMENSIONS.



309 Duthie Ave

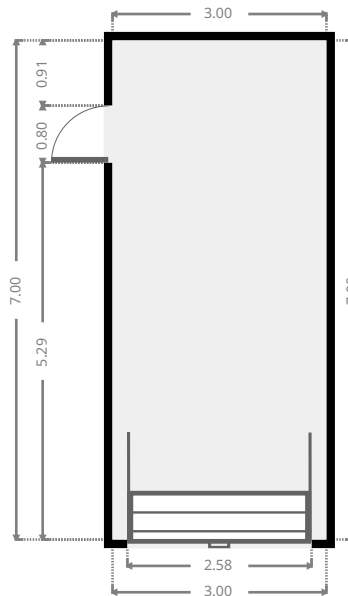
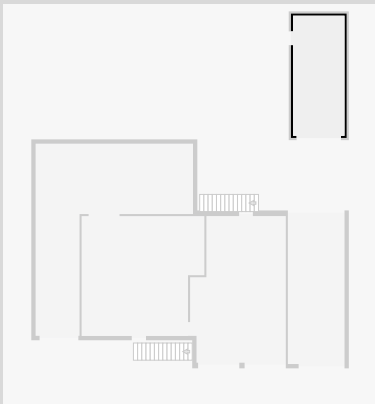
Garage

Width: 3.31 m
Length: 8.70 m
Area: 28.70 m²
Perimeter: 23.99 m



Other

Width: 3.00 m
Length: 7.00 m
Area: 21.00 m²
Perimeter: 20.00 m

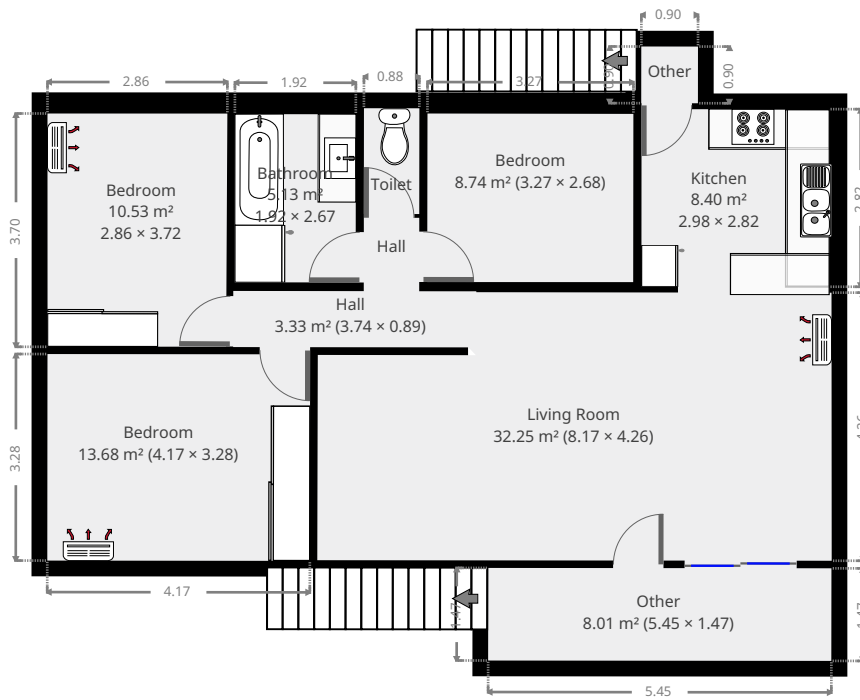


THIS FLOORPLAN IS PROVIDED WITHOUT WARRANTY OF ANY KIND. SENSOPIA DISCLAIMS ANY WARRANTY INCLUDING, WITHOUT LIMITATION, SATISFACTORY QUALITY OR ACCURACY OF DIMENSIONS.



309 Duthie Ave

1st Floor



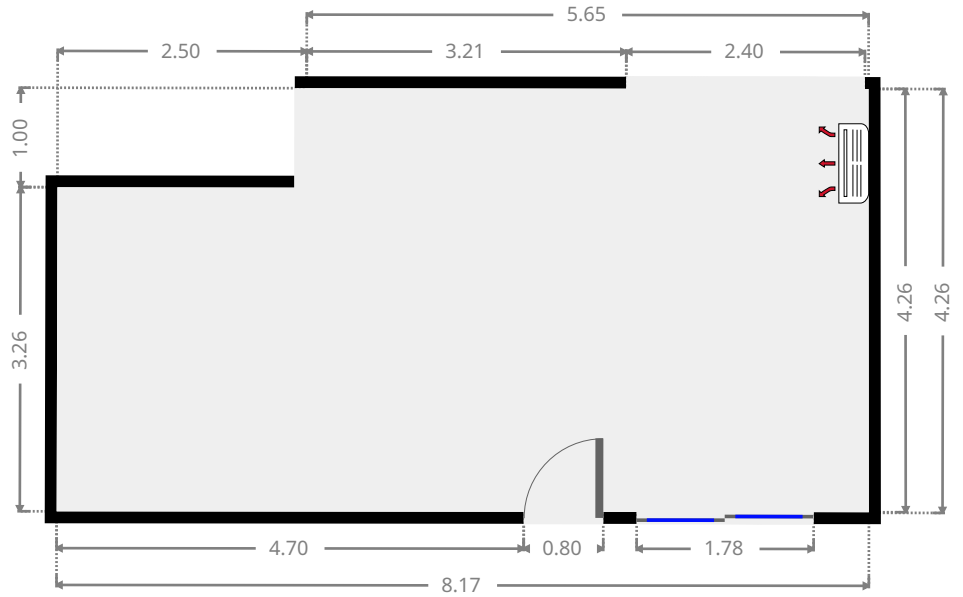
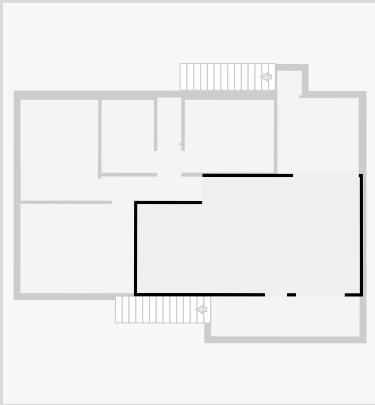
THIS FLOORPLAN IS PROVIDED WITHOUT WARRANTY OF ANY KIND. SENSOPIA DISCLAIMS ANY WARRANTY INCLUDING, WITHOUT LIMITATION, SATISFACTORY QUALITY OR ACCURACY OF DIMENSIONS.



309 Duthie Ave

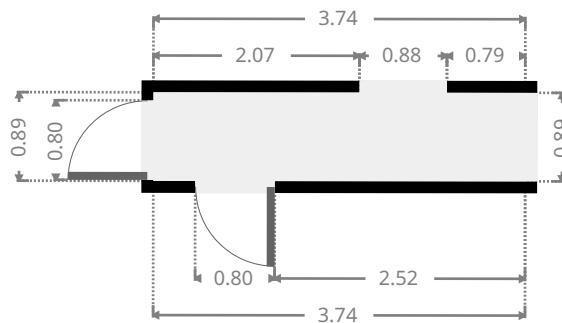
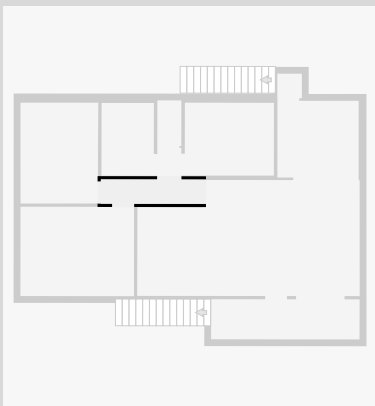
Living Room

Width: 4.26 m
 Length: 8.17 m
 Area: 32.25 m²
 Perimeter: 24.84 m



Hall

Width: 0.89 m
 Length: 3.74 m
 Area: 3.33 m²
 Perimeter: 9.26 m



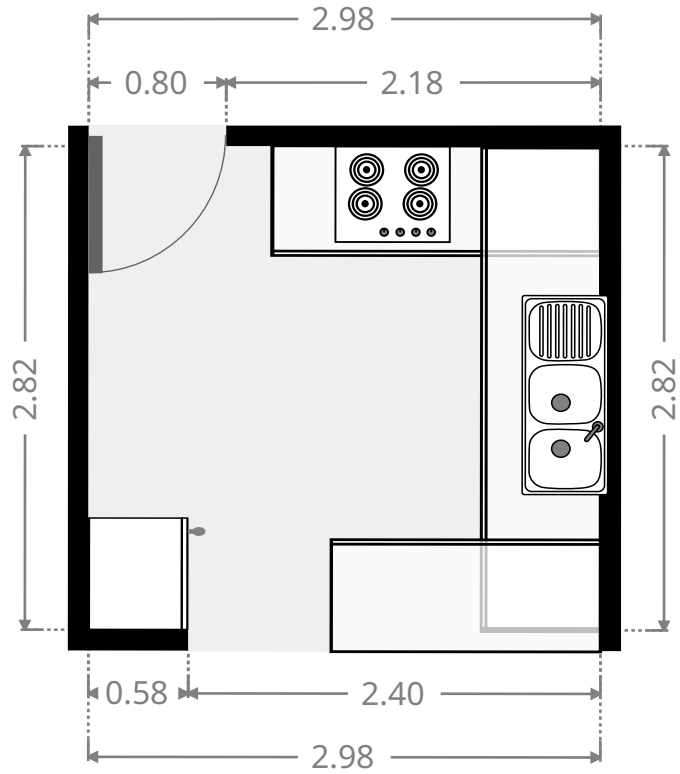
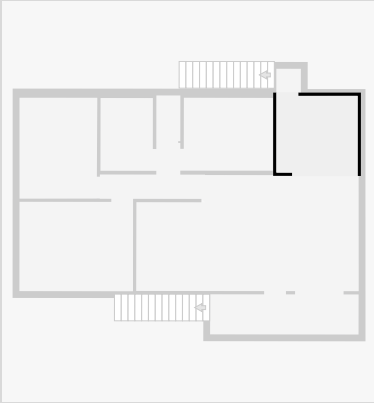
THIS FLOORPLAN IS PROVIDED WITHOUT WARRANTY OF ANY KIND. SENSOPIA DISCLAIMS ANY WARRANTY INCLUDING, WITHOUT LIMITATION, SATISFACTORY QUALITY OR ACCURACY OF DIMENSIONS.



309 Duthie Ave

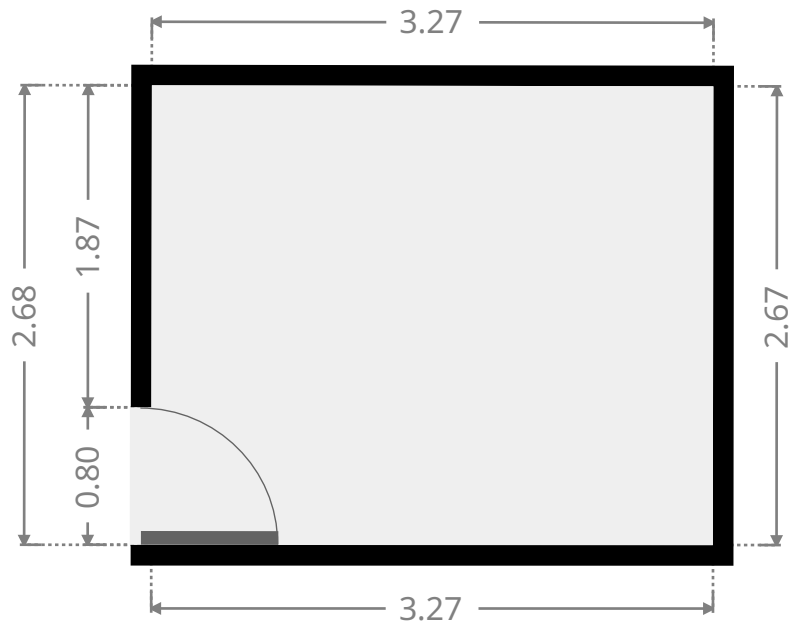
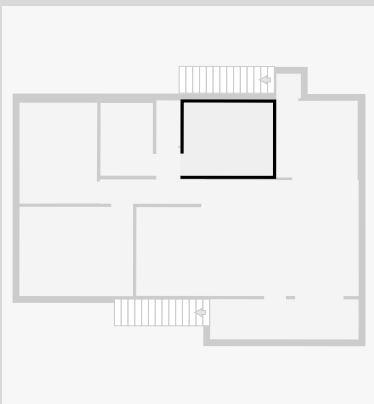
Kitchen

Width: 2.82 m
Length: 2.98 m
Area: 8.40 m²
Perimeter: 11.60 m

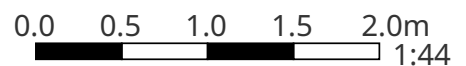


Bedroom

Width: 2.68 m
Length: 3.27 m
Area: 8.74 m²
Perimeter: 11.89 m



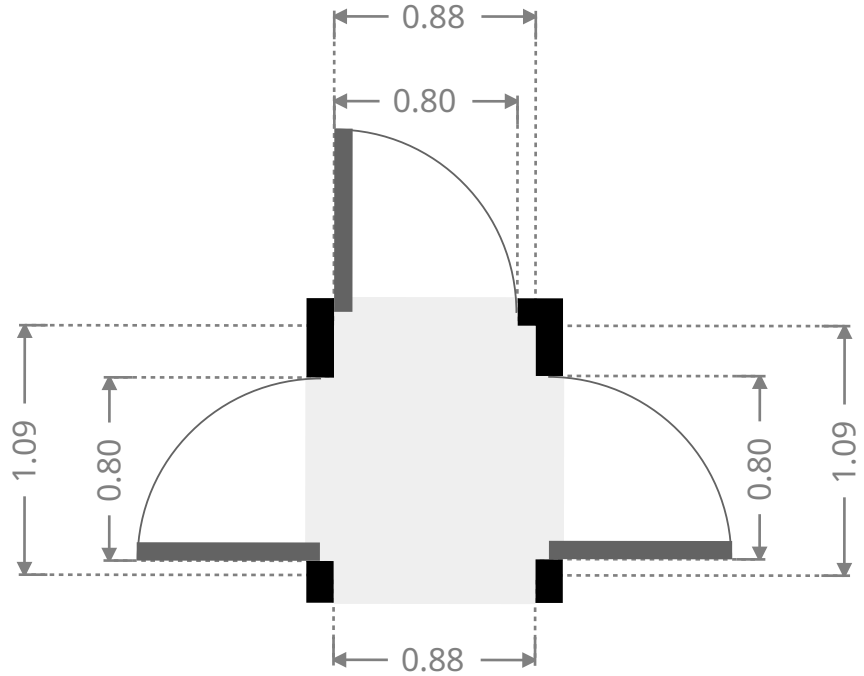
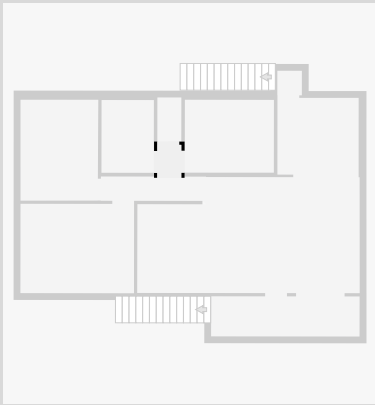
THIS FLOORPLAN IS PROVIDED WITHOUT WARRANTY OF ANY KIND. SENSOPIA DISCLAIMS ANY WARRANTY INCLUDING, WITHOUT LIMITATION, SATISFACTORY QUALITY OR ACCURACY OF DIMENSIONS.



309 Duthie Ave

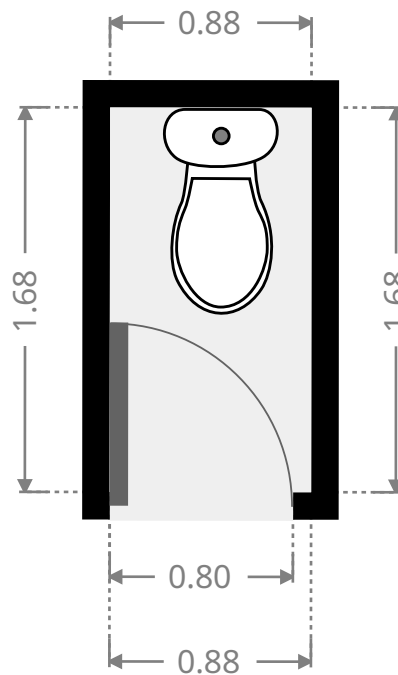
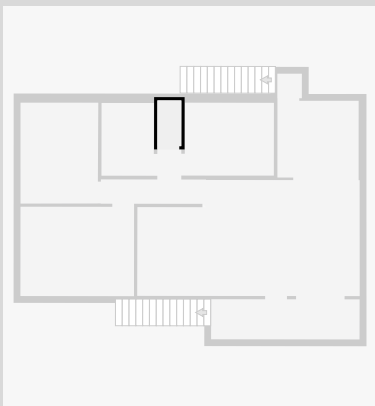
Hall

Width: 0.88 m
Length: 1.09 m
Area: 0.96 m²
Perimeter: 3.94 m



Toilet / Half Bath

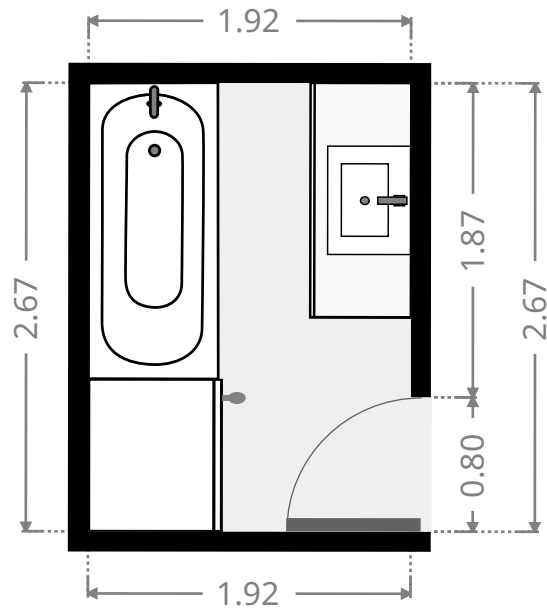
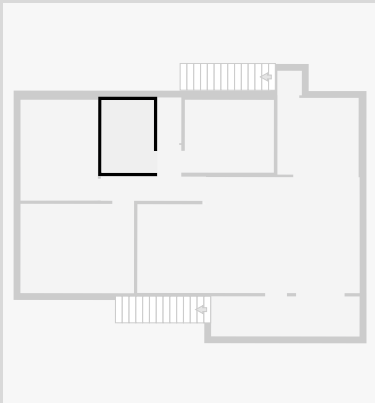
Width: 0.88 m
Length: 1.68 m
Area: 1.48 m²
Perimeter: 5.12 m



309 Duthie Ave

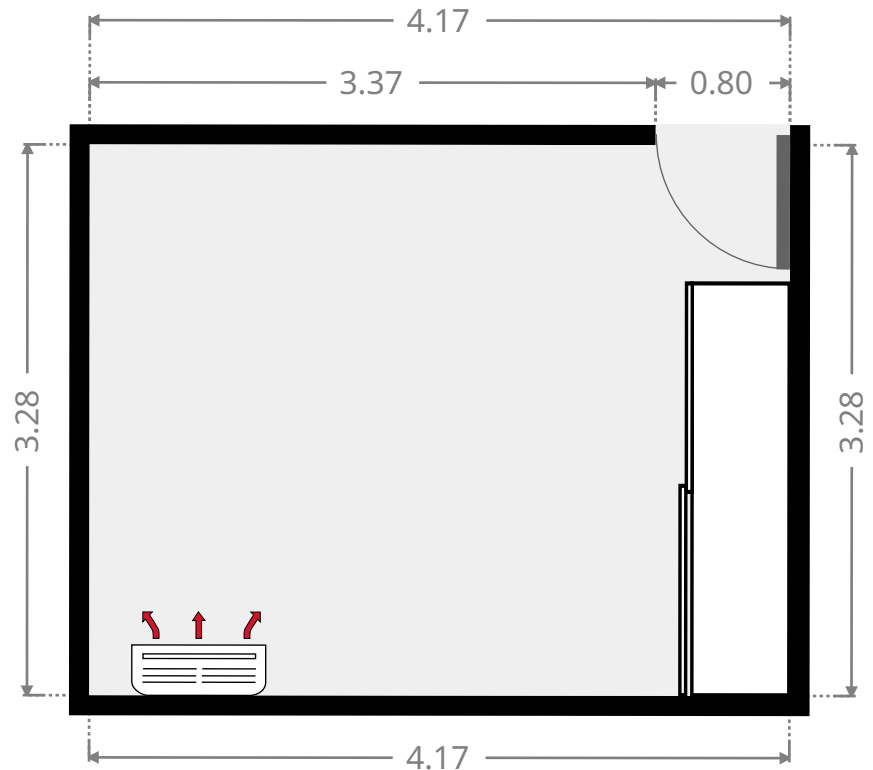
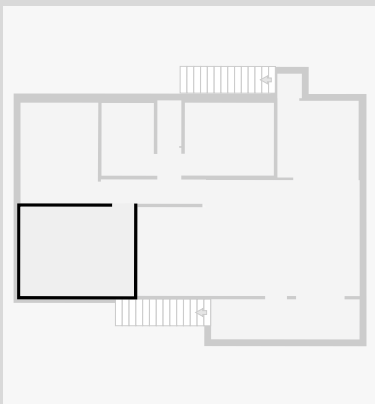
Bathroom

Width: 1.92 m
Length: 2.67 m
Area: 5.13 m²
Perimeter: 9.18 m

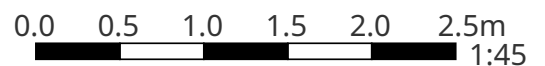


Bedroom

Width: 3.28 m
Length: 4.17 m
Area: 13.68 m²
Perimeter: 14.90 m



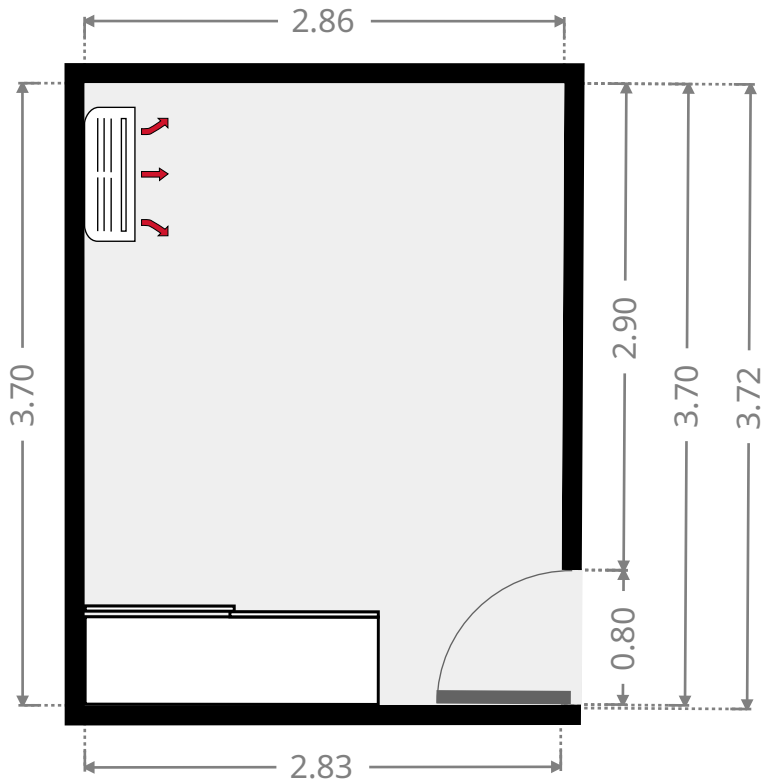
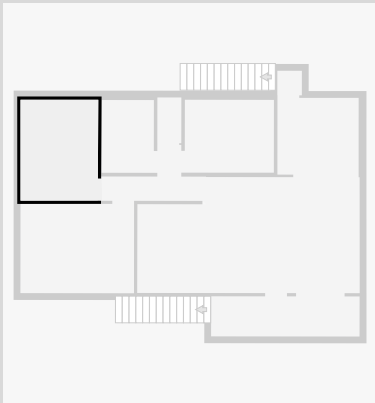
THIS FLOORPLAN IS PROVIDED WITHOUT WARRANTY OF ANY KIND. SENSOPIA DISCLAIMS ANY WARRANTY INCLUDING, WITHOUT LIMITATION, SATISFACTORY QUALITY OR ACCURACY OF DIMENSIONS.



309 Duthie Ave

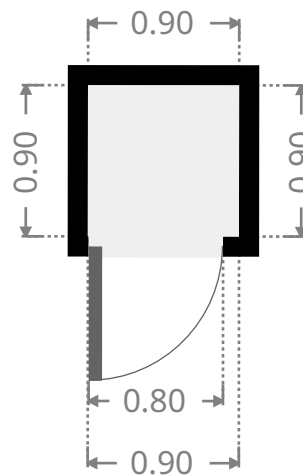
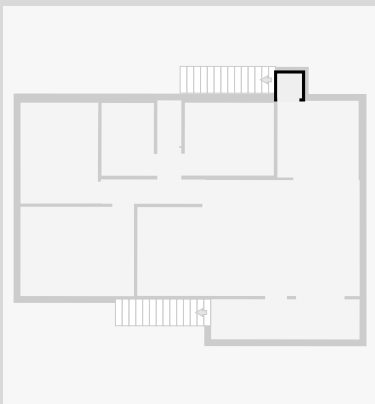
Bedroom

Width: 2.86 m
 Length: 3.72 m
 Area: 10.53 m²
 Perimeter: 13.09 m

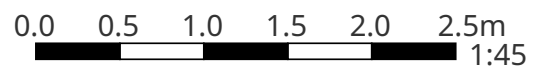


Other

Width: 0.90 m
 Length: 0.90 m
 Area: 0.81 m²
 Perimeter: 3.60 m



THIS FLOORPLAN IS PROVIDED WITHOUT WARRANTY OF ANY KIND. SENSOPIA DISCLAIMS ANY WARRANTY INCLUDING, WITHOUT LIMITATION, SATISFACTORY QUALITY OR ACCURACY OF DIMENSIONS.



309 Duthie Ave

Other

Width: 1.47 m
Length: 5.45 m
Area: 8.01 m²
Perimeter: 13.84 m

