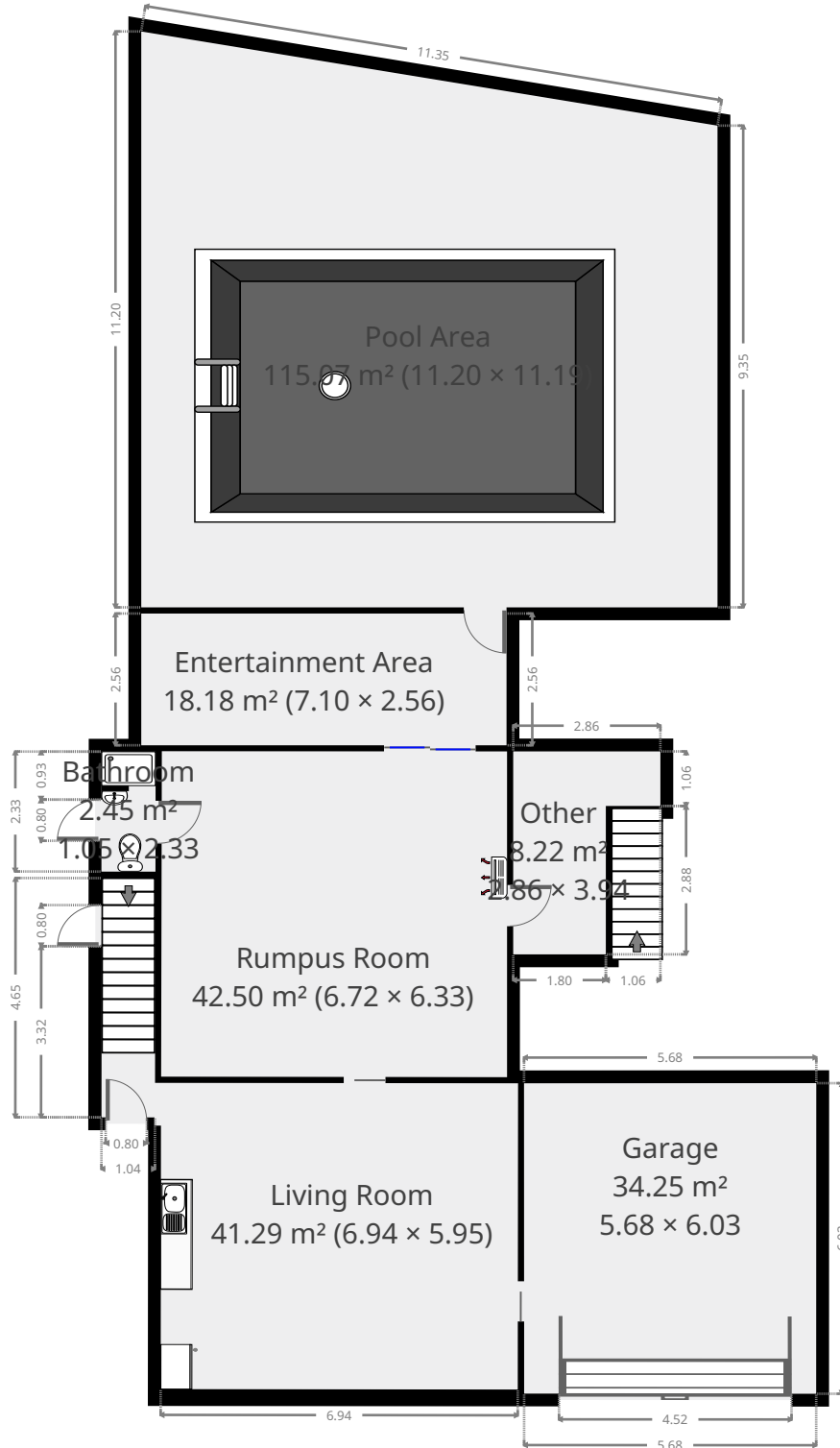


# 305 Bloxsom Street

## Ground Floor



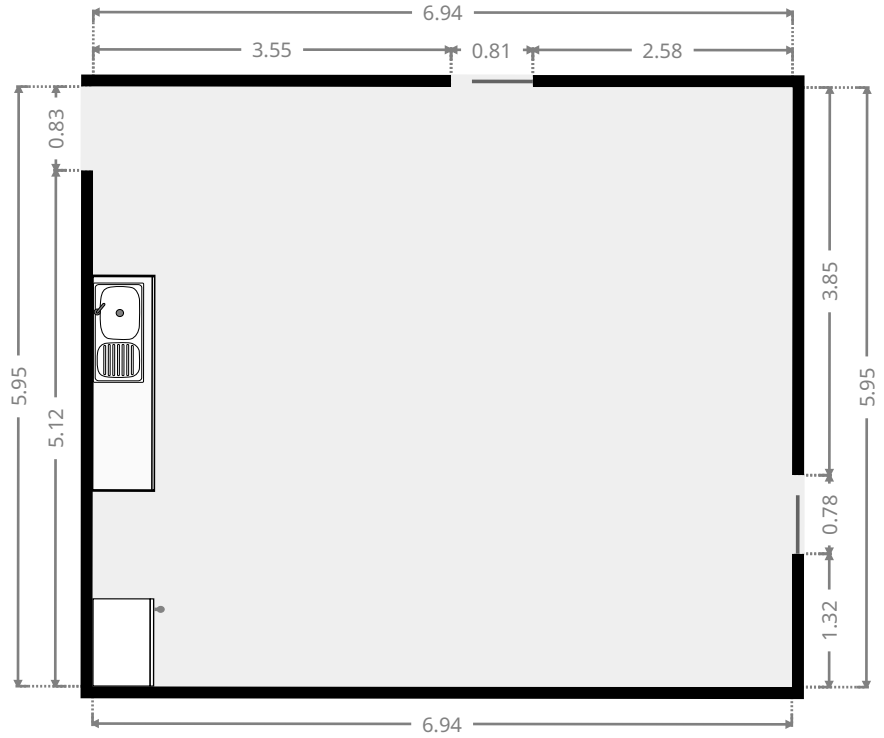
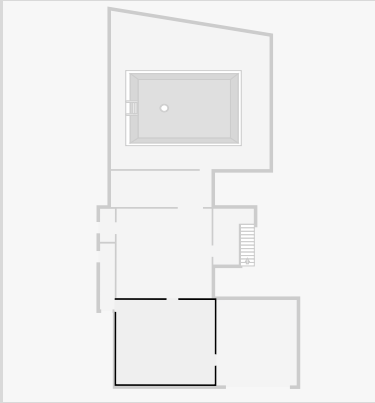
THIS FLOORPLAN IS PROVIDED WITHOUT WARRANTY OF ANY KIND. SENSOPIA DISCLAIMS ANY WARRANTY INCLUDING, WITHOUT LIMITATION, SATISFACTORY QUALITY OR ACCURACY OF DIMENSIONS.



# 305 Bloxsom Street

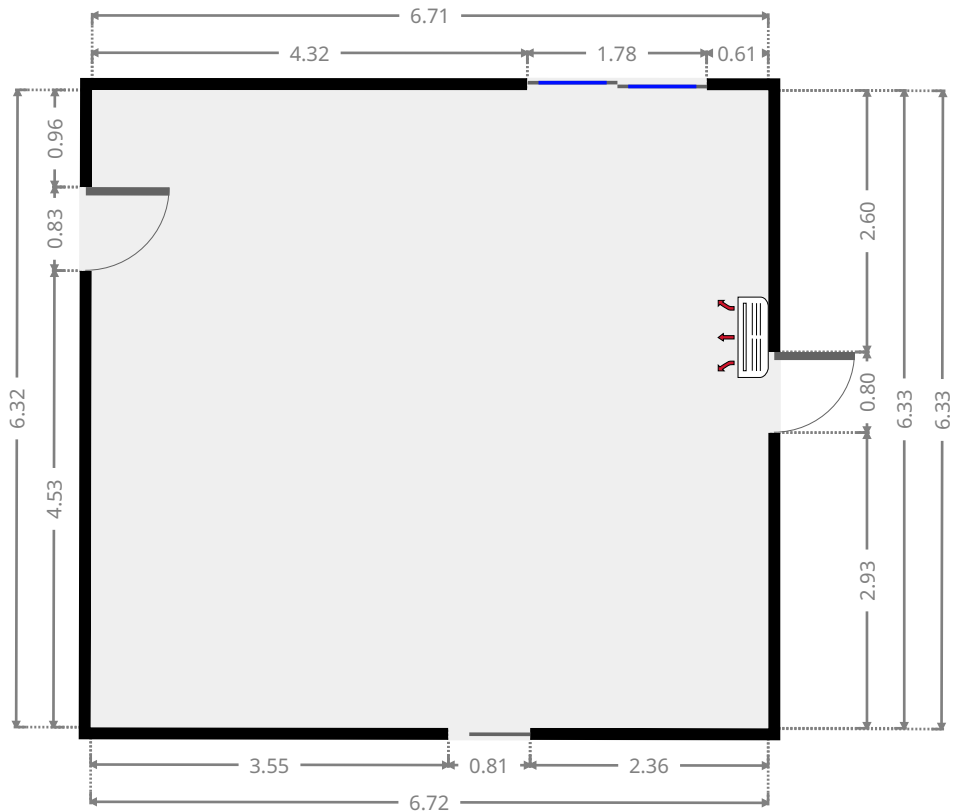
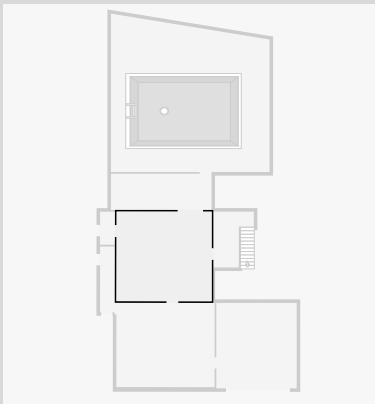
## Living Room

Width: 5.95 m  
 Length: 6.94 m  
 Area: 41.29 m<sup>2</sup>  
 Perimeter: 25.78 m



## Rumpus Room

Width: 6.33 m  
 Length: 6.72 m  
 Area: 42.50 m<sup>2</sup>  
 Perimeter: 26.09 m

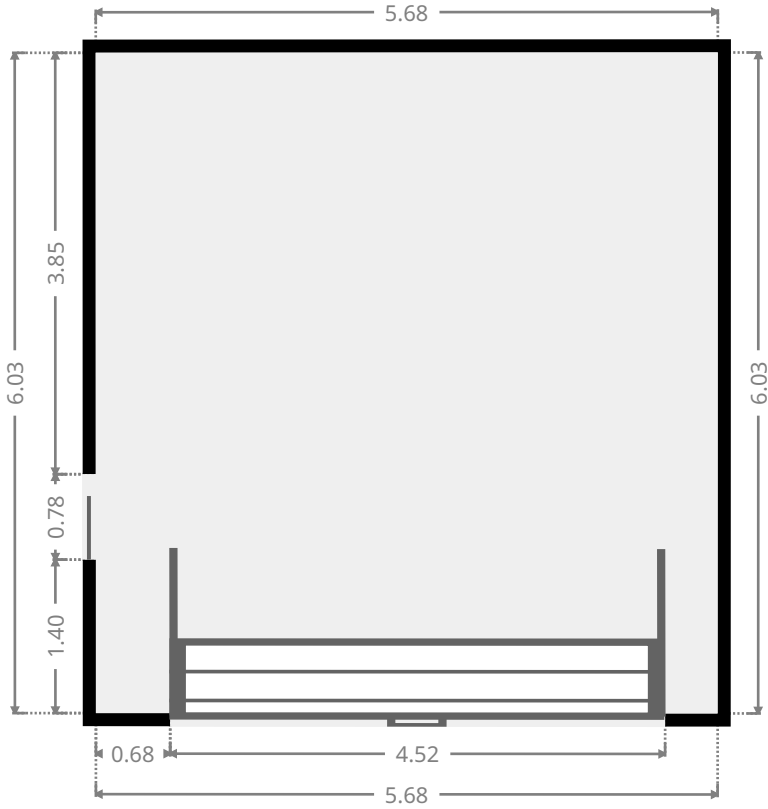
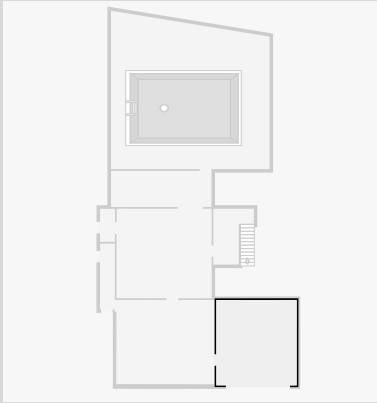


THIS FLOORPLAN IS PROVIDED WITHOUT WARRANTY OF ANY KIND. SENSOPIA DISCLAIMS ANY WARRANTY INCLUDING, WITHOUT LIMITATION, SATISFACTORY QUALITY OR ACCURACY OF DIMENSIONS.

# 305 Bloxsom Street

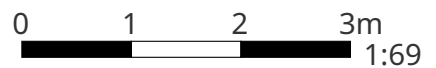
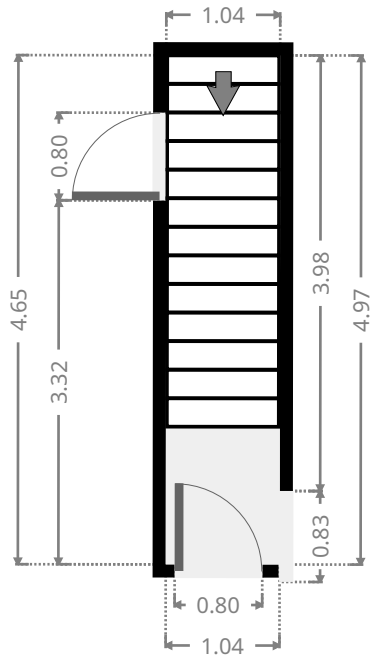
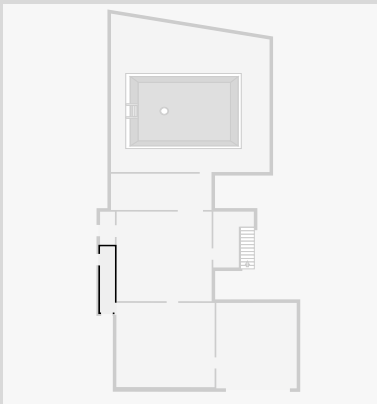
## Garage

Width: 5.68 m  
 Length: 6.03 m  
 Area: 34.25 m<sup>2</sup>  
 Perimeter: 23.42 m



## Stairway

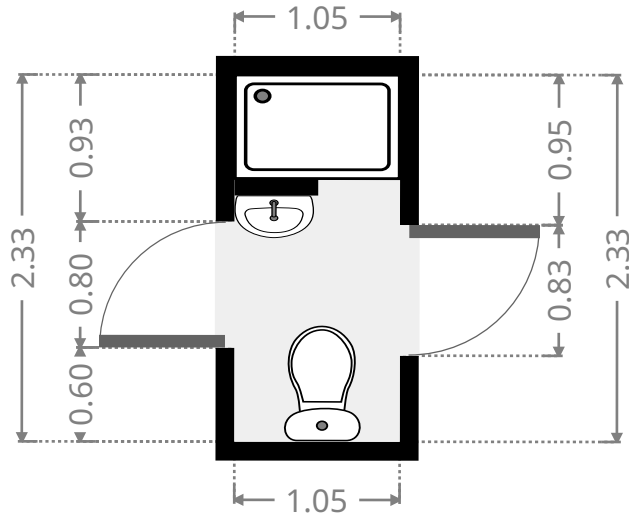
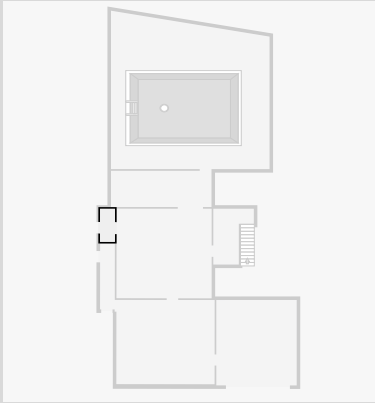
Width: 1.04 m  
 Length: 4.65 m  
 Area: 4.83 m<sup>2</sup>  
 Perimeter: 11.38 m



# 305 Bloxsom Street

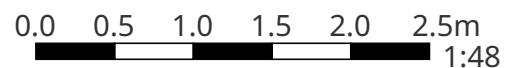
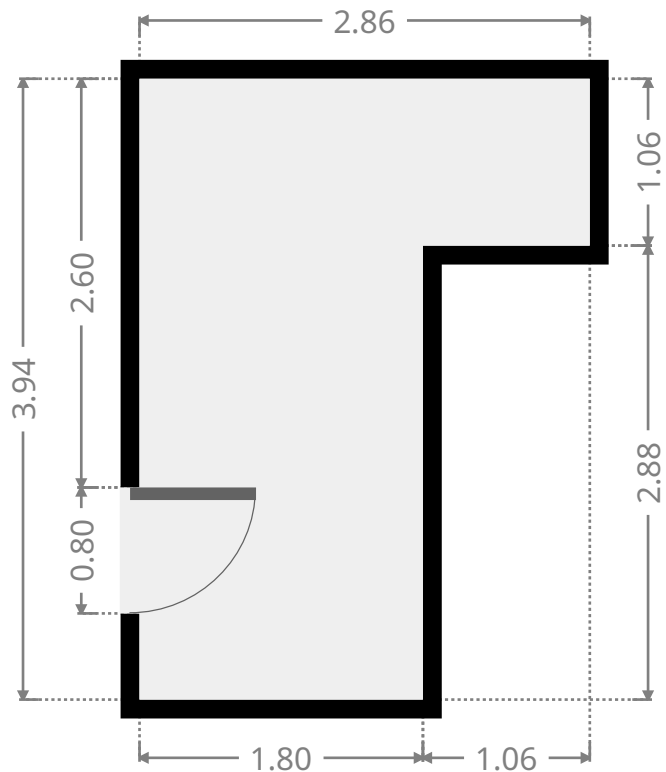
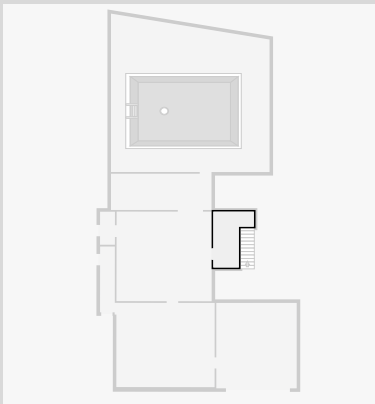
## Bathroom

Width: 1.05 m  
Length: 2.33 m  
Area: 2.45 m<sup>2</sup>  
Perimeter: 6.76 m



## Other

Width: 2.86 m  
Length: 3.94 m  
Area: 8.22 m<sup>2</sup>  
Perimeter: 13.61 m

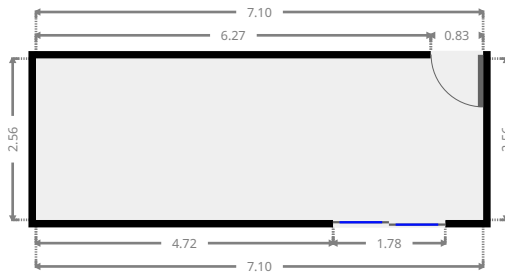
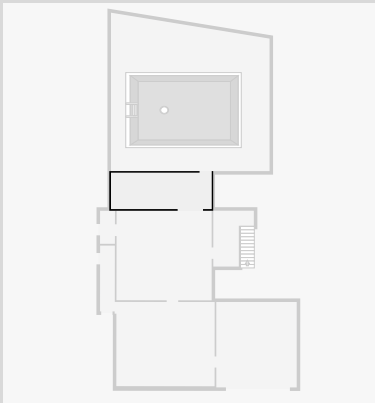


THIS FLOORPLAN IS PROVIDED WITHOUT WARRANTY OF ANY KIND. SENSOPIA DISCLAIMS ANY WARRANTY INCLUDING, WITHOUT LIMITATION, SATISFACTORY QUALITY OR ACCURACY OF DIMENSIONS.

# 305 Bloxsom Street

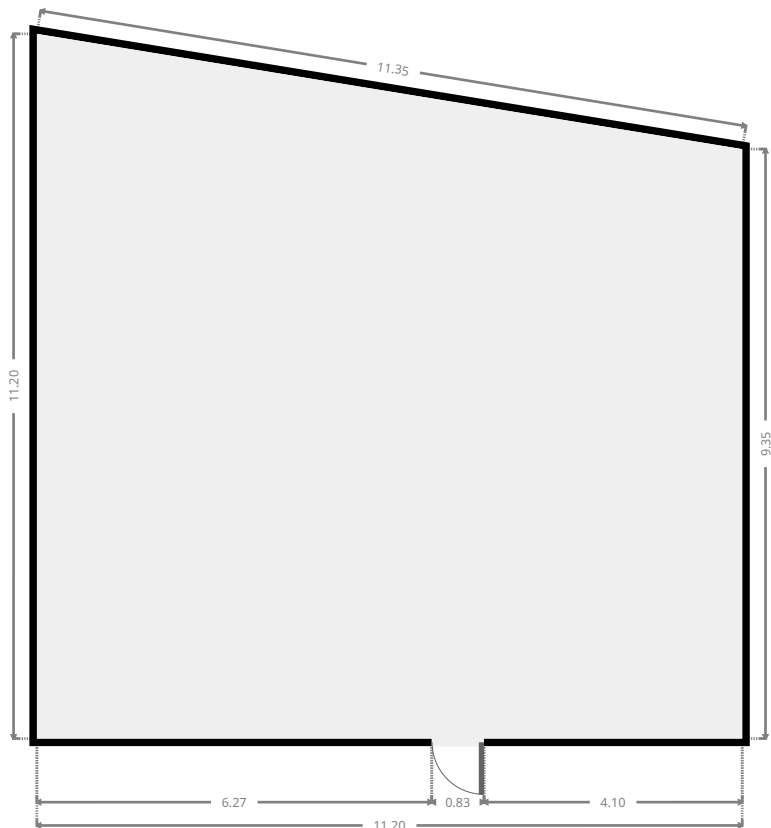
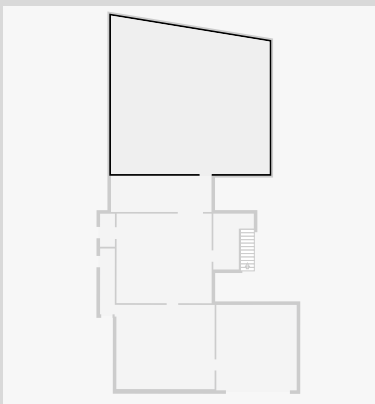
## Entertainment Area

Width: 2.56 m  
Length: 7.10 m  
Area: 18.18 m<sup>2</sup>  
Perimeter: 19.32 m



## Pool Area

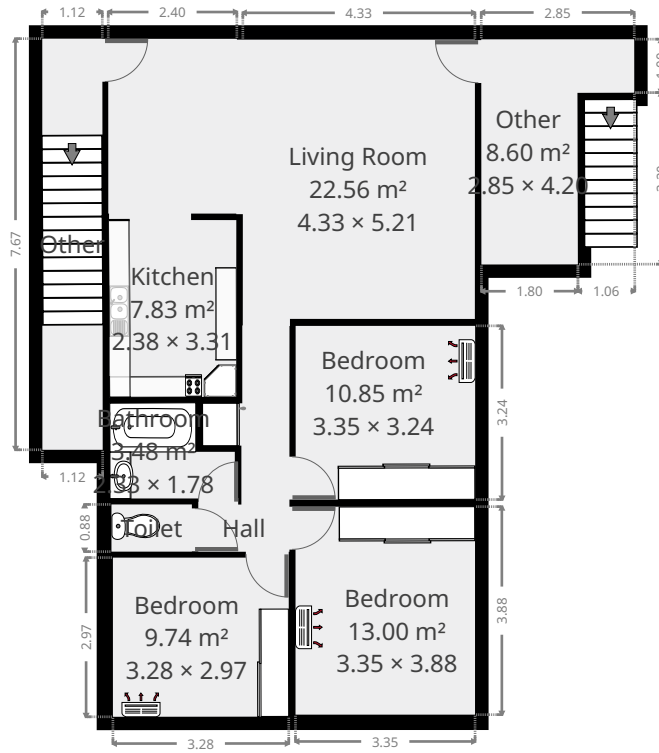
Width: 11.19 m  
Length: 11.20 m  
Area: 115.07 m<sup>2</sup>  
Perimeter: 43.10 m



THIS FLOORPLAN IS PROVIDED WITHOUT WARRANTY OF ANY KIND. SENSOPIA DISCLAIMS ANY WARRANTY INCLUDING, WITHOUT LIMITATION, SATISFACTORY QUALITY OR ACCURACY OF DIMENSIONS.

# 305 Bloxsom Street

## 1st Floor



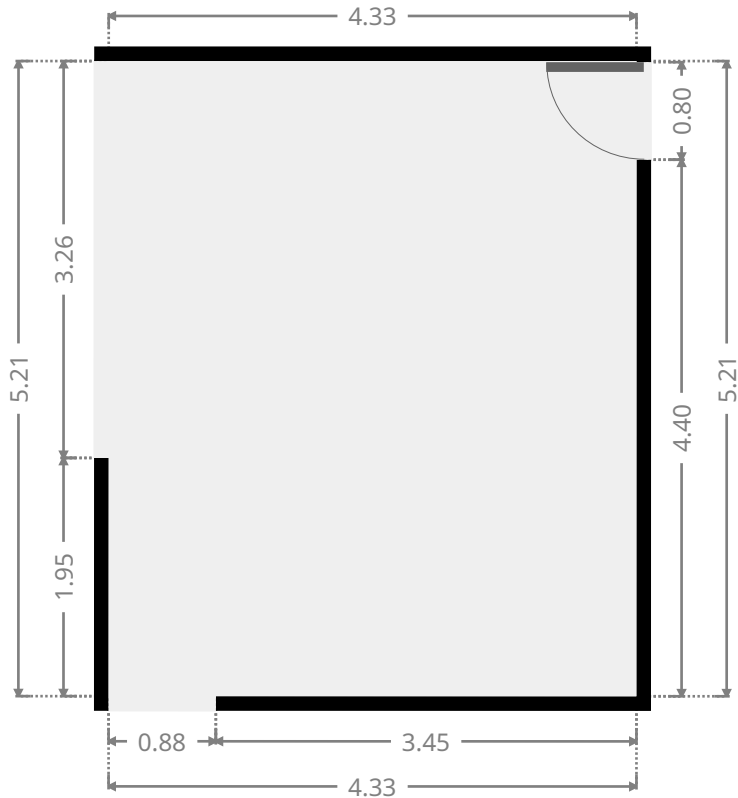
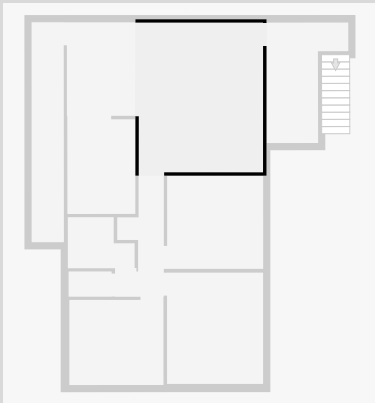
THIS FLOORPLAN IS PROVIDED WITHOUT WARRANTY OF ANY KIND. SENSOPIA DISCLAIMS ANY WARRANTY INCLUDING, WITHOUT LIMITATION, SATISFACTORY QUALITY OR ACCURACY OF DIMENSIONS.



# 305 Bloxsom Street

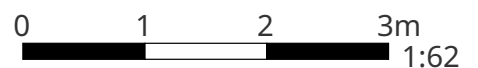
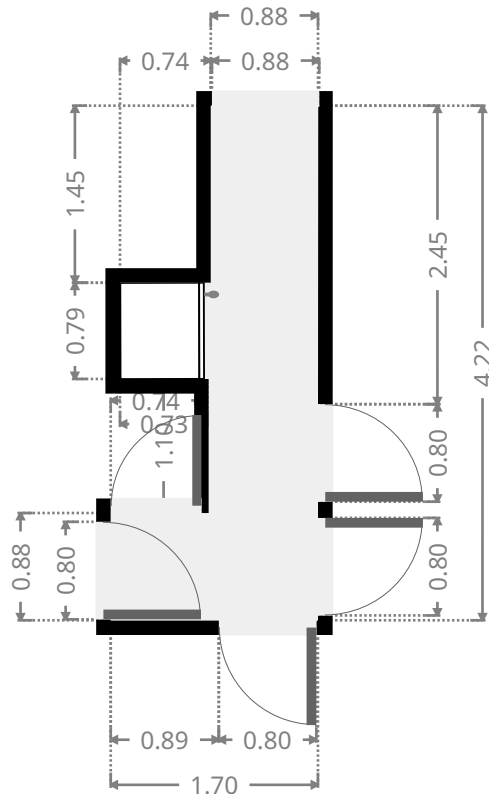
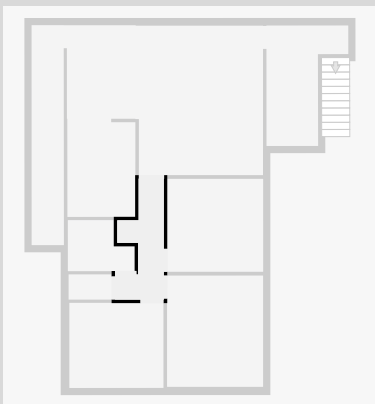
## Living Room

Width: 4.33 m  
 Length: 5.21 m  
 Area: 22.56 m<sup>2</sup>  
 Perimeter: 19.08 m



## Hall

Width: 1.70 m  
 Length: 4.22 m  
 Area: 5.04 m<sup>2</sup>  
 Perimeter: 13.30 m

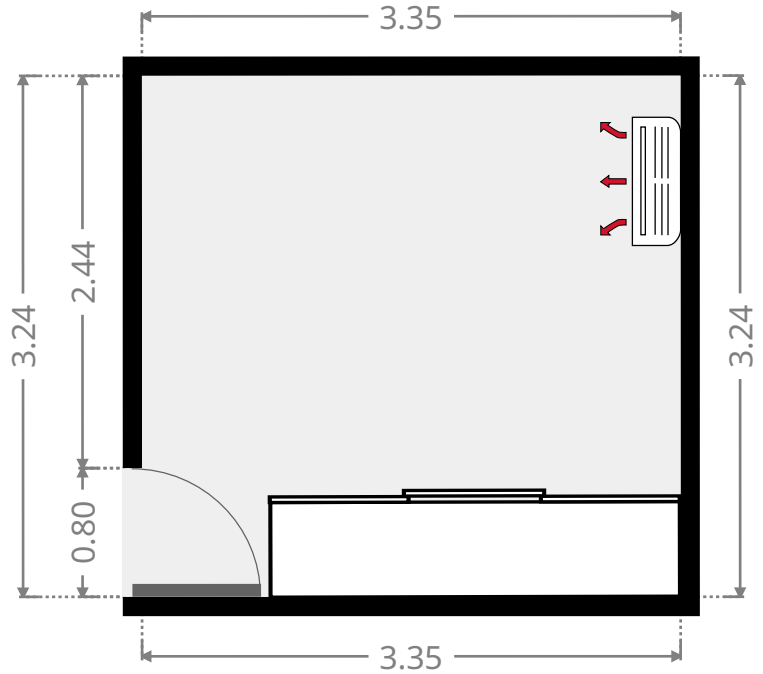
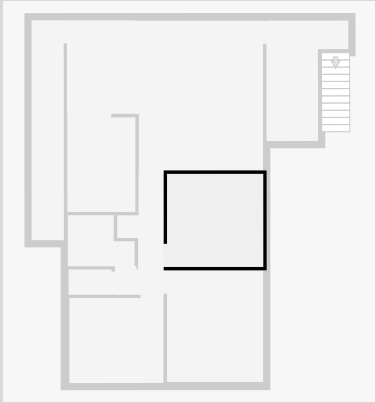


THIS FLOORPLAN IS PROVIDED WITHOUT WARRANTY OF ANY KIND. SENSOPIA DISCLAIMS ANY WARRANTY INCLUDING, WITHOUT LIMITATION, SATISFACTORY QUALITY OR ACCURACY OF DIMENSIONS.

# 305 Bloxsom Street

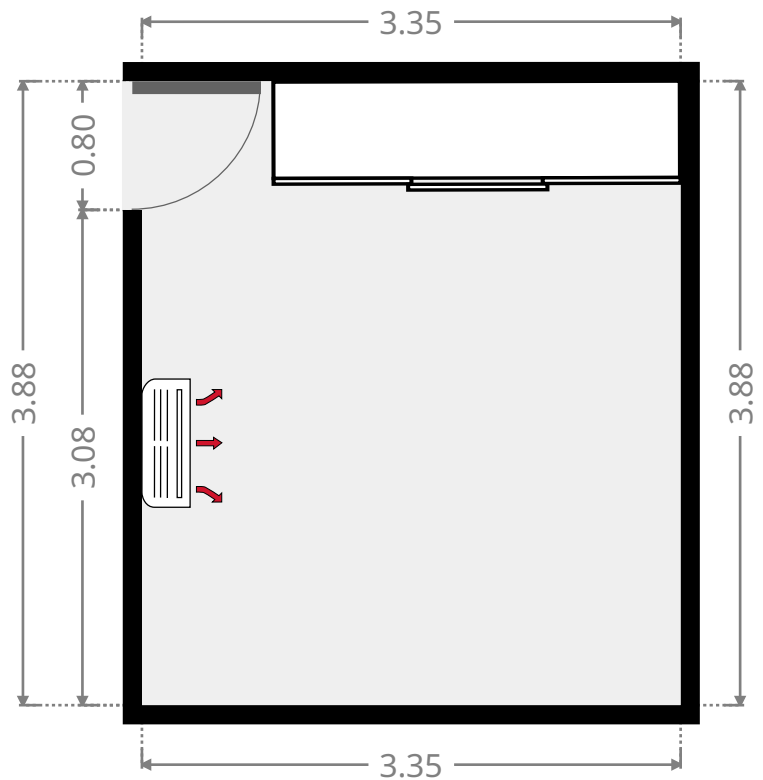
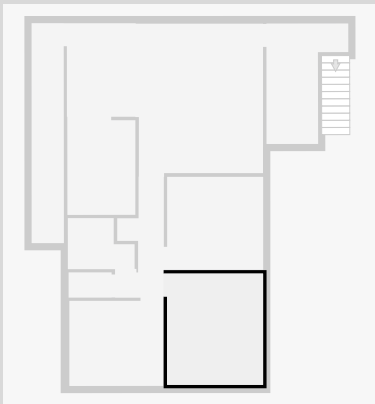
## Bedroom

Width: 3.24 m  
 Length: 3.35 m  
 Area: 10.85 m<sup>2</sup>  
 Perimeter: 13.18 m

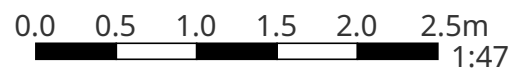


## Bedroom

Width: 3.35 m  
 Length: 3.88 m  
 Area: 13.00 m<sup>2</sup>  
 Perimeter: 14.46 m



THIS FLOORPLAN IS PROVIDED WITHOUT WARRANTY OF ANY KIND. SENSOPIA DISCLAIMS ANY WARRANTY INCLUDING, WITHOUT LIMITATION, SATISFACTORY QUALITY OR ACCURACY OF DIMENSIONS.

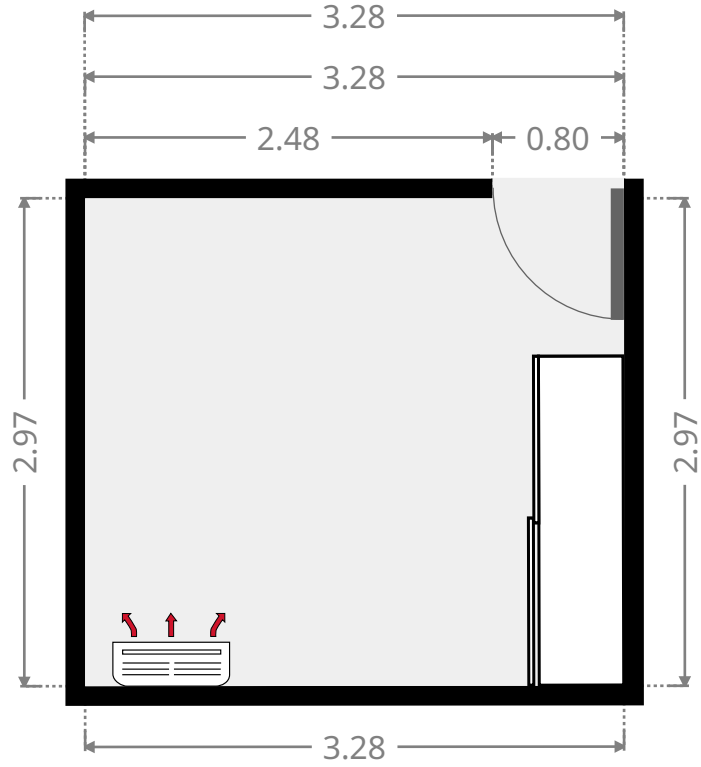
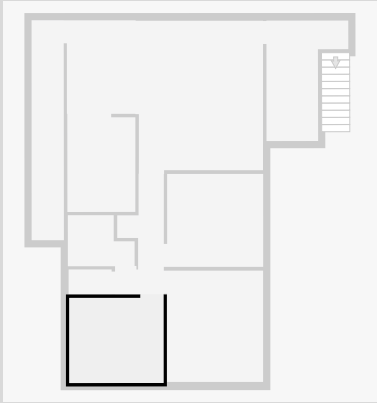




# 305 Bloxsom Street

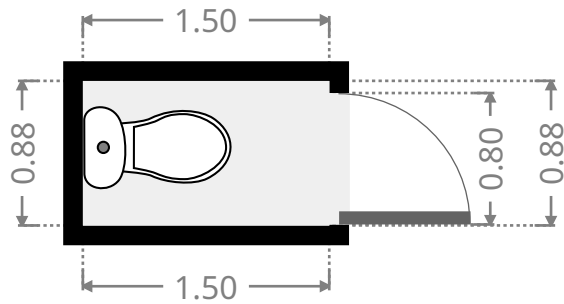
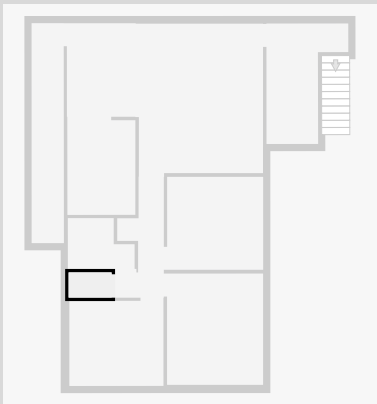
## Bedroom

Width: 2.97 m  
Length: 3.28 m  
Area: 9.74 m<sup>2</sup>  
Perimeter: 12.50 m



## Toilet / Half Bath

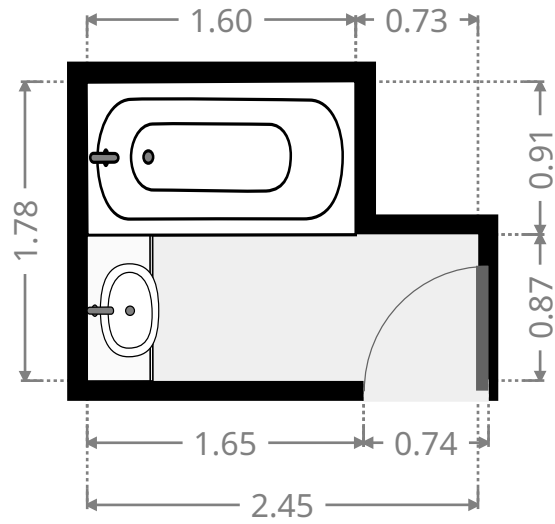
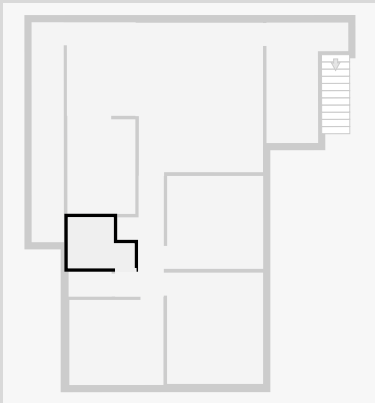
Width: 0.88 m  
Length: 1.50 m  
Area: 1.32 m<sup>2</sup>  
Perimeter: 4.76 m



# 305 Bloxsom Street

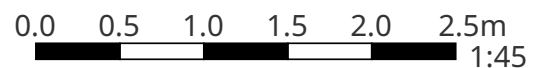
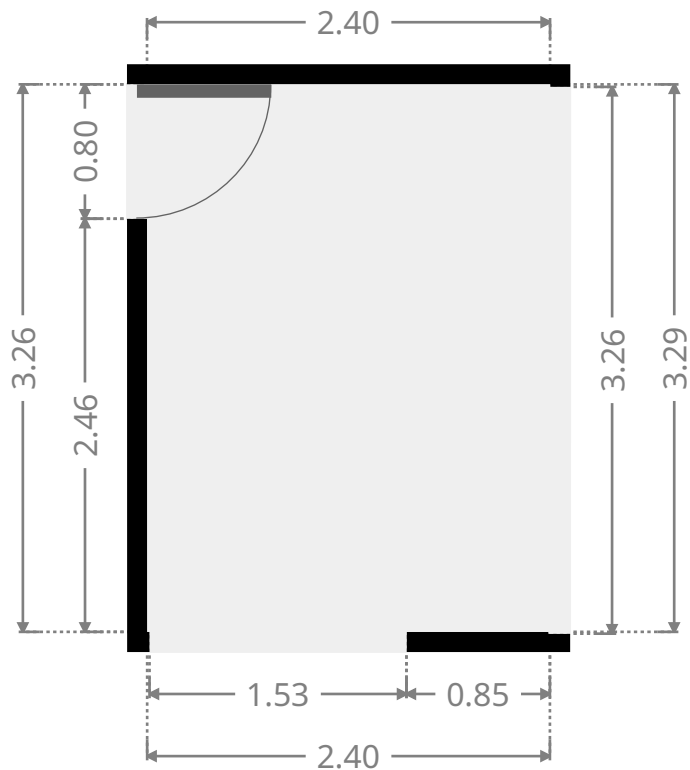
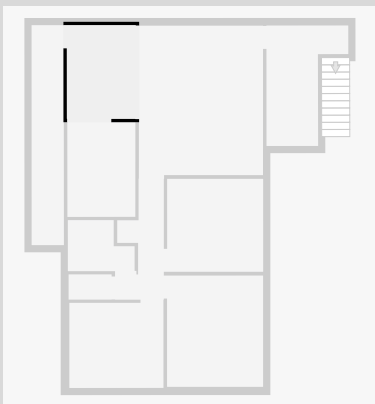
## Bathroom

Width: 1.78 m  
Length: 2.33 m  
Area: 3.48 m<sup>2</sup>  
Perimeter: 8.21 m



## Dining Room

Width: 2.40 m  
Length: 3.26 m  
Area: 7.82 m<sup>2</sup>  
Perimeter: 11.32 m

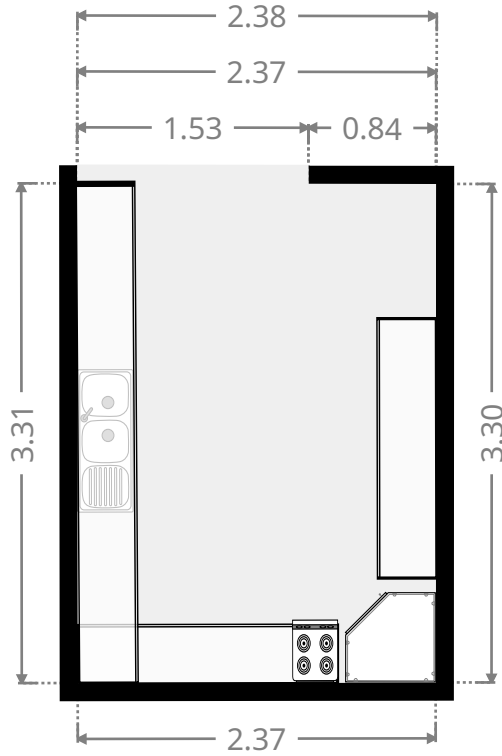
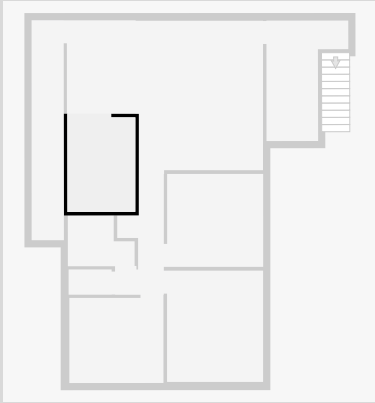


THIS FLOORPLAN IS PROVIDED WITHOUT WARRANTY OF ANY KIND. SENSOPIA DISCLAIMS ANY WARRANTY INCLUDING, WITHOUT LIMITATION, SATISFACTORY QUALITY OR ACCURACY OF DIMENSIONS.

# 305 Bloxsom Street

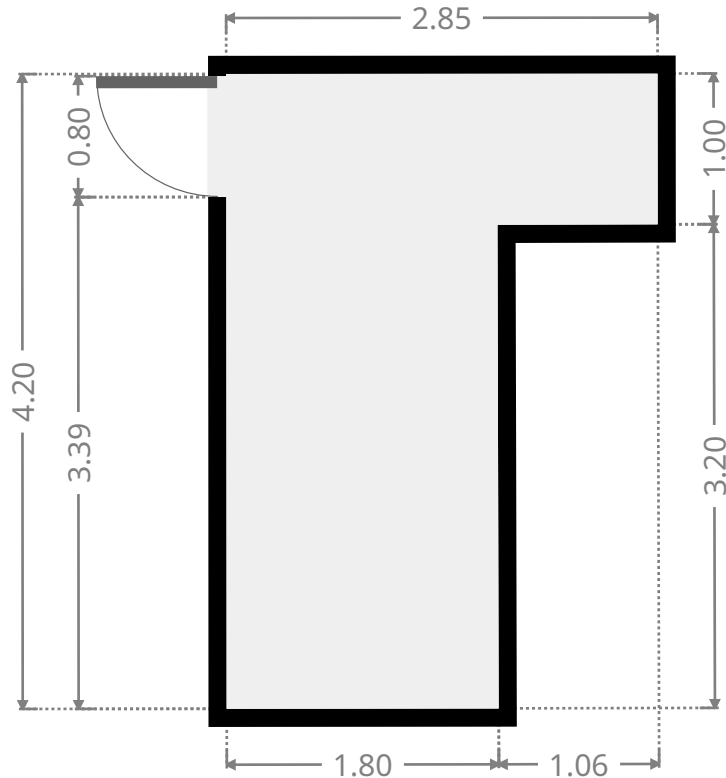
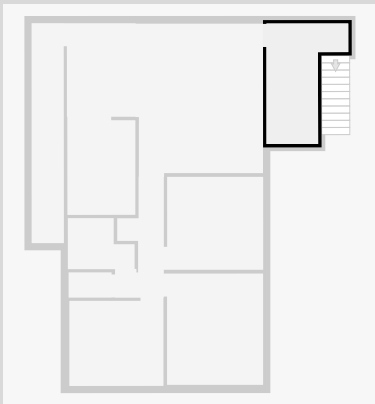
## Kitchen

Width: 2.38 m  
Length: 3.31 m  
Area: 7.83 m<sup>2</sup>  
Perimeter: 11.35 m



## Other

Width: 2.85 m  
Length: 4.20 m  
Area: 8.60 m<sup>2</sup>  
Perimeter: 14.11 m



# 305 Bloxsom Street

## Other

Width: 1.12 m  
Length: 7.67 m  
Area: 8.61 m<sup>2</sup>  
Perimeter: 17.58 m

