

302 Everingham Avenue

SUBMITTED BY

Ray White Rockhampton Casey
stockers@cqoz.com

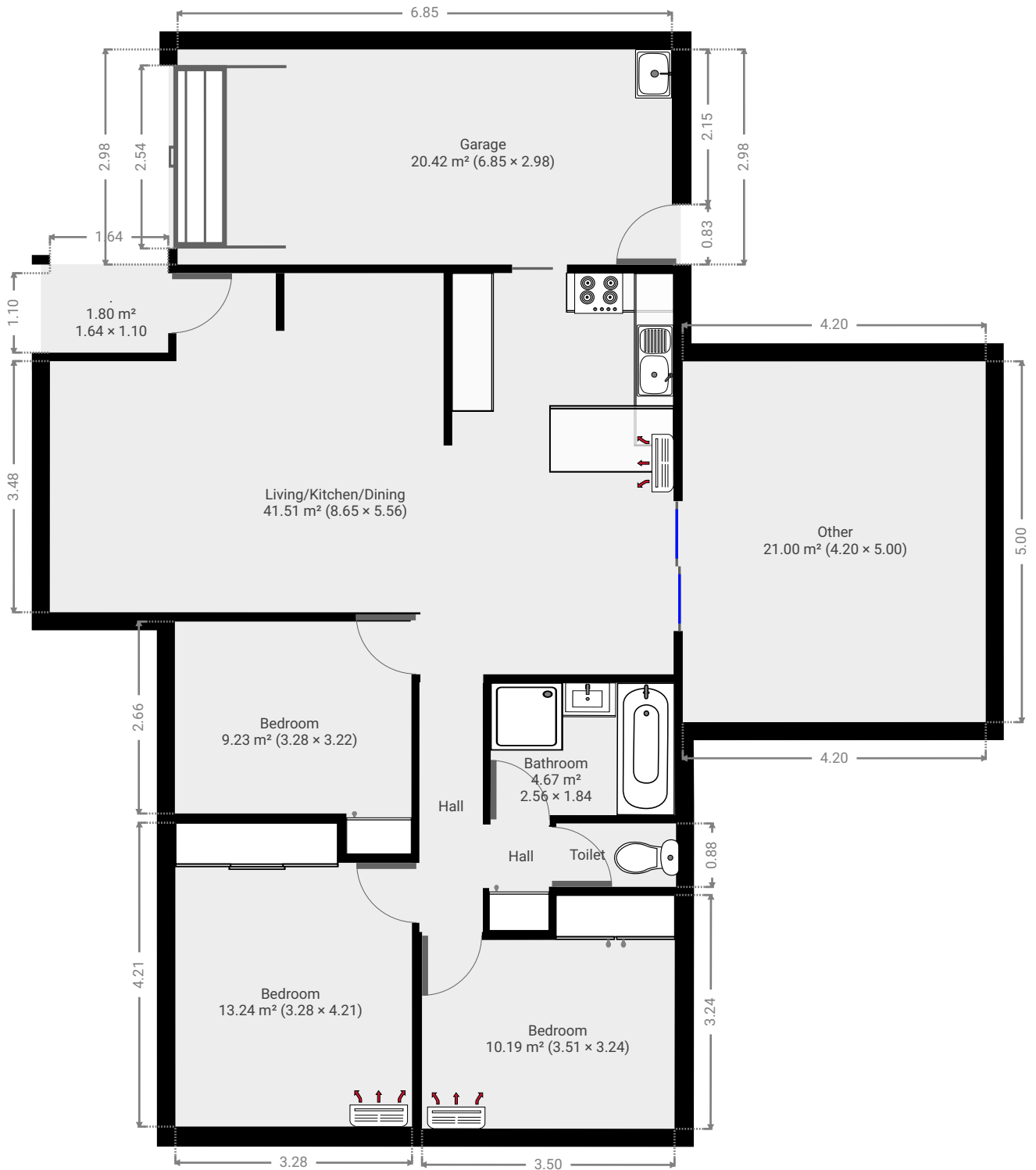
CREATED ON

2019-01-21

Floors

1

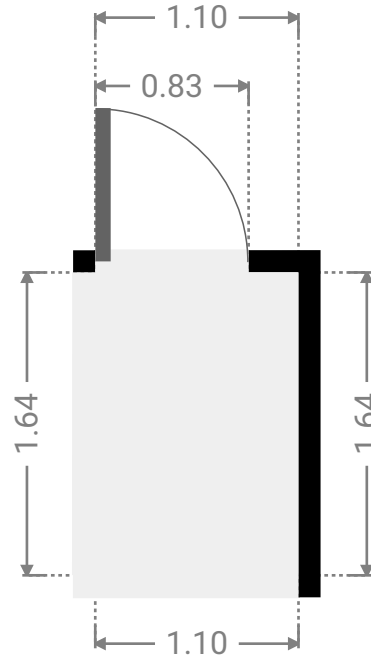
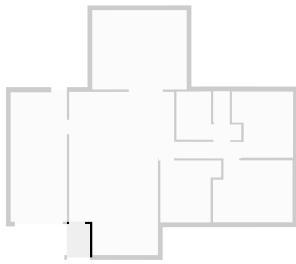
▼ Ground Floor



FLOORS: 1

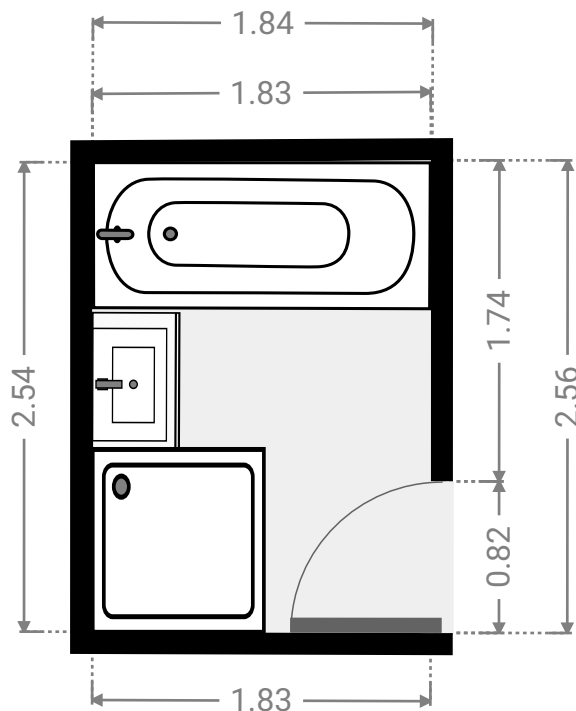
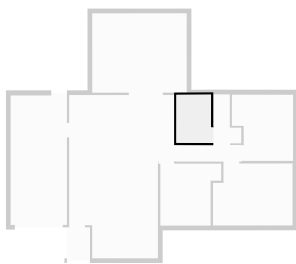
▼ .
Ground Floor

WIDTH: 1.10 m • LENGTH: 1.64 m
AREA: 1.80 m² • PERIMETER: 5.48 m



▼ Bathroom
Ground Floor

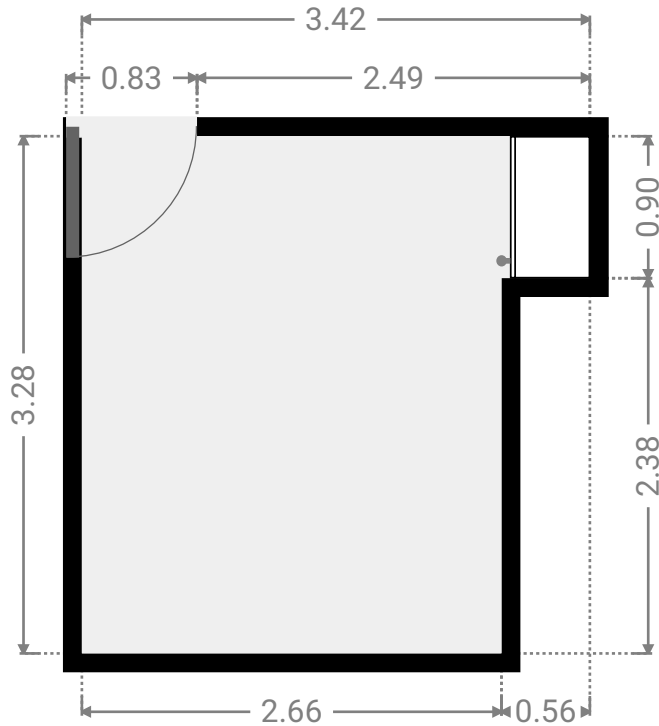
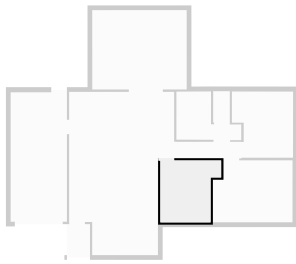
WIDTH: 1.84 m • LENGTH: 2.56 m
AREA: 4.67 m² • PERIMETER: 8.77 m



FLOORS: 1

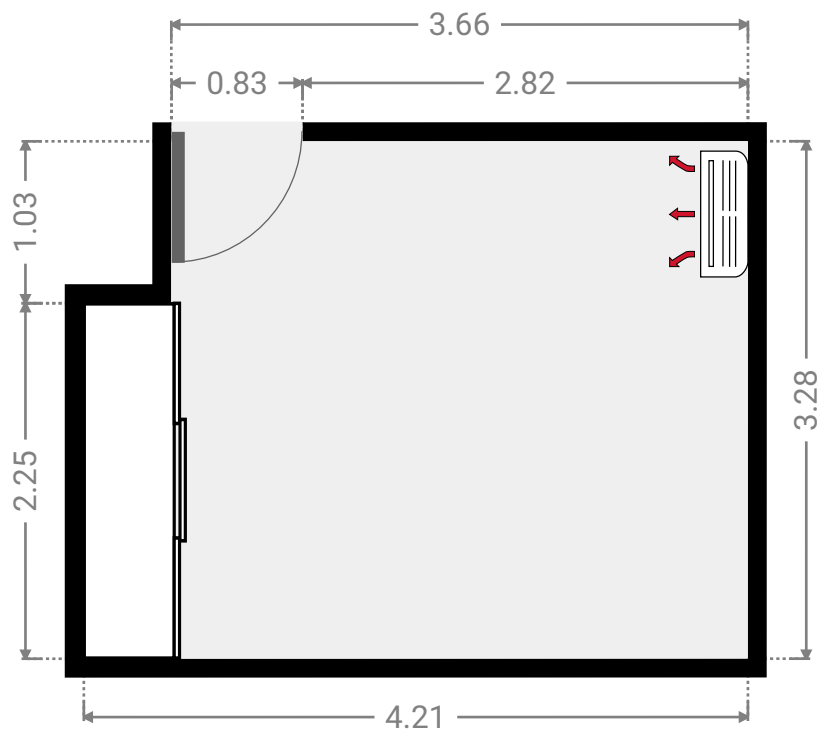
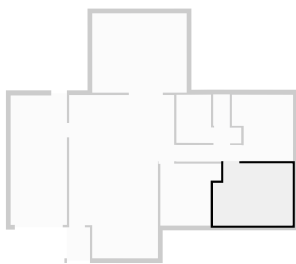
▼ **Bedroom**
Ground Floor

WIDTH: 3.22 m • LENGTH: 3.28 m
AREA: 9.23 m² • PERIMETER: 13.00 m



▼ **Bedroom**
Ground Floor

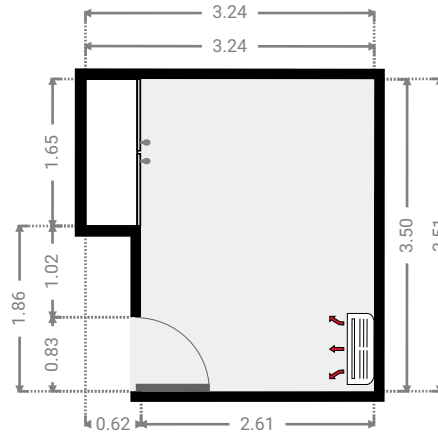
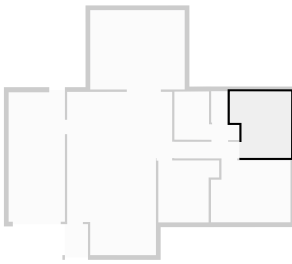
WIDTH: 4.21 m • LENGTH: 3.28 m
AREA: 13.24 m² • PERIMETER: 14.98 m



FLOORS: 1

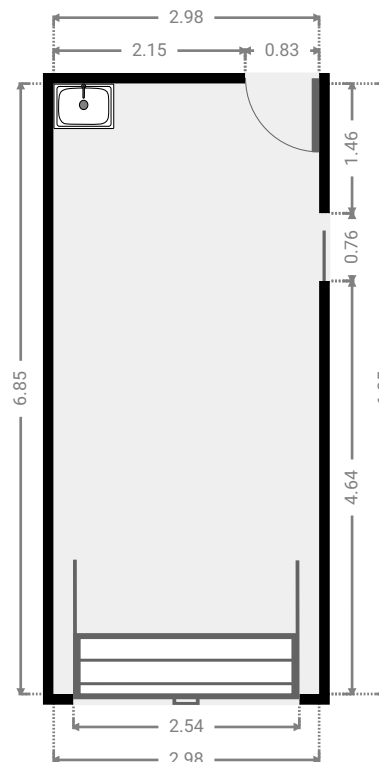
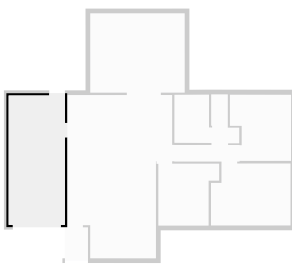
▼ **Bedroom**
Ground Floor

WIDTH: 3.24 m • LENGTH: 3.50 m
AREA: 10.19 m² • PERIMETER: 13.48 m



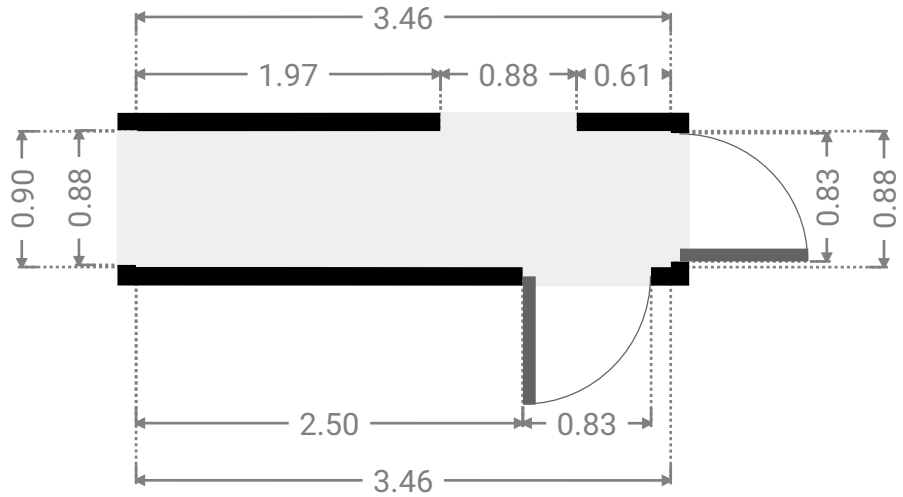
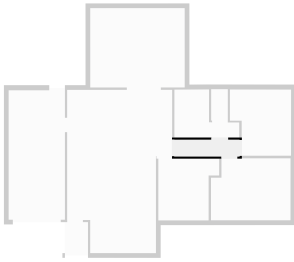
▼ **Garage**
Ground Floor

WIDTH: 2.98 m • LENGTH: 6.85 m
AREA: 20.42 m² • PERIMETER: 19.66 m



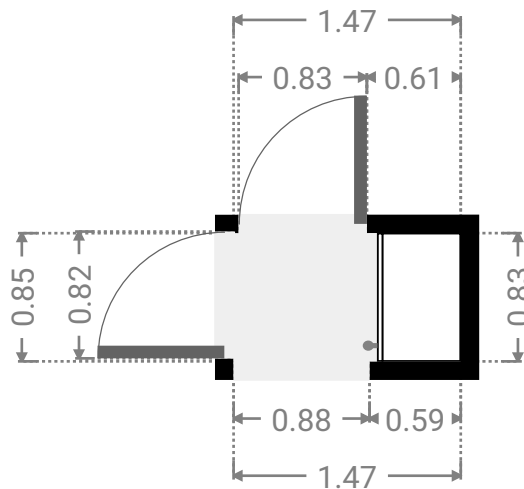
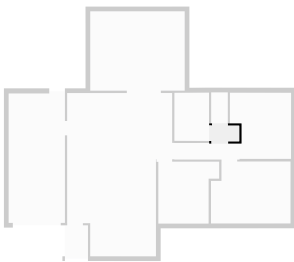
▼ **Hall**
Ground Floor

WIDTH: 3.46 m • LENGTH: 0.88 m
AREA: 3.04 m² • PERIMETER: 8.68 m



▼ **Hall**
Ground Floor

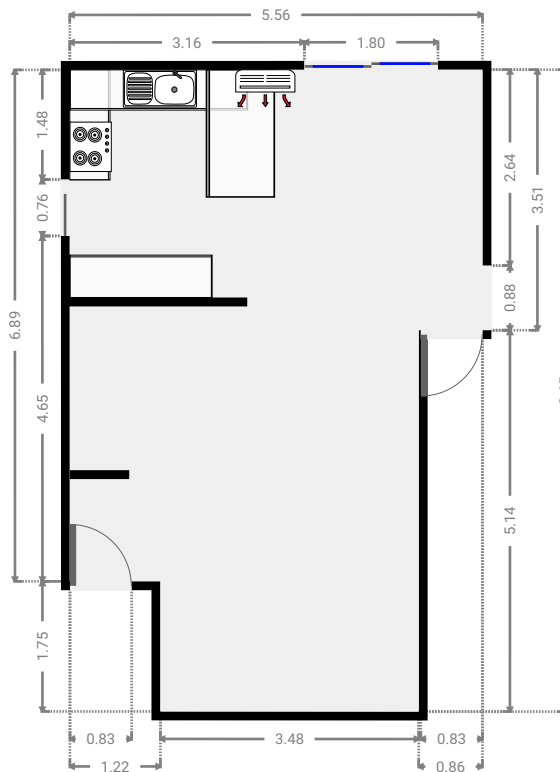
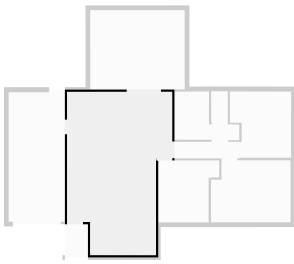
WIDTH: 1.47 m • LENGTH: 0.83 m
AREA: 1.22 m² • PERIMETER: 4.60 m



FLOORS: 1

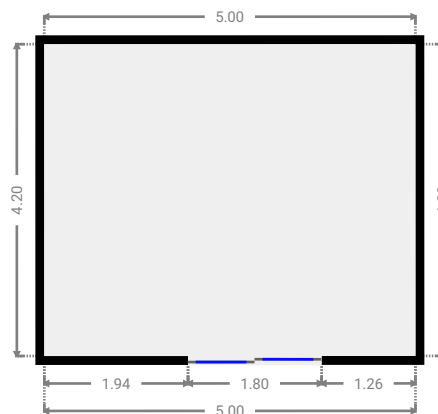
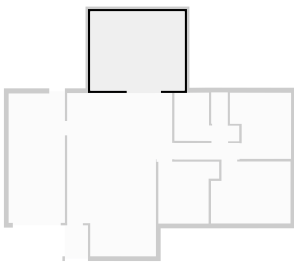
▼ **Living/Kitchen/Dining**
Ground Floor

WIDTH: 5.56 m • LENGTH: 8.65 m
AREA: 41.51 m² • PERIMETER: 28.41 m



▼ **Other**
Ground Floor

WIDTH: 5.00 m • LENGTH: 4.20 m
AREA: 21.00 m² • PERIMETER: 18.40 m



▼ Toilet
Ground Floor

WIDTH: 0.88 m • LENGTH: 1.66 m
AREA: 1.46 m² • PERIMETER: 5.08 m

