

301 Halford Street

SUBMITTED BY

Ray White Rockhampton Casey
stockers@cqoz.com

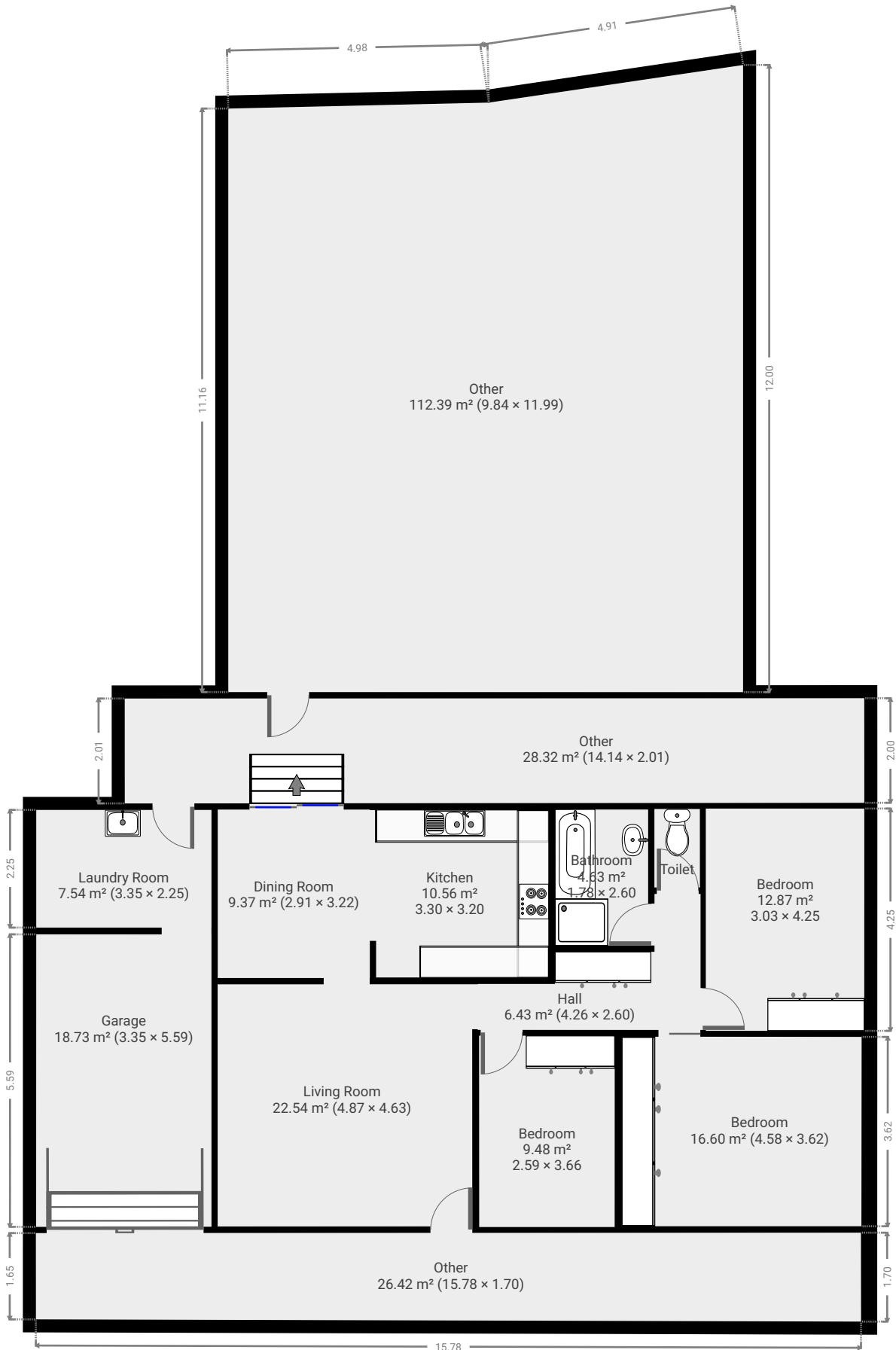
CREATED ON

2022-01-04

Floors

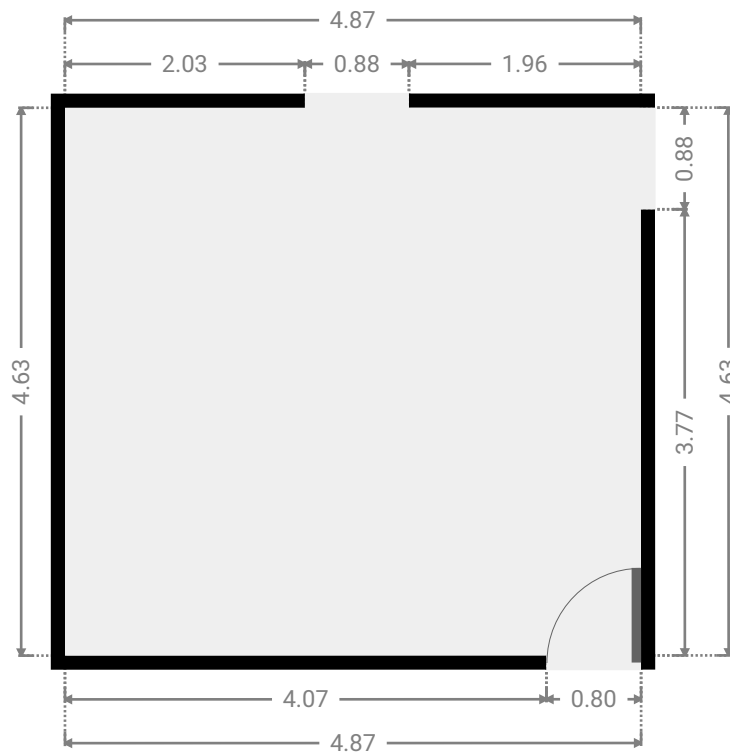
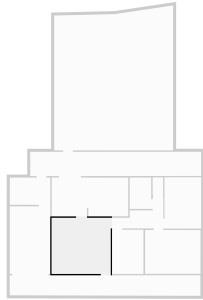
1

▼ Ground Floor



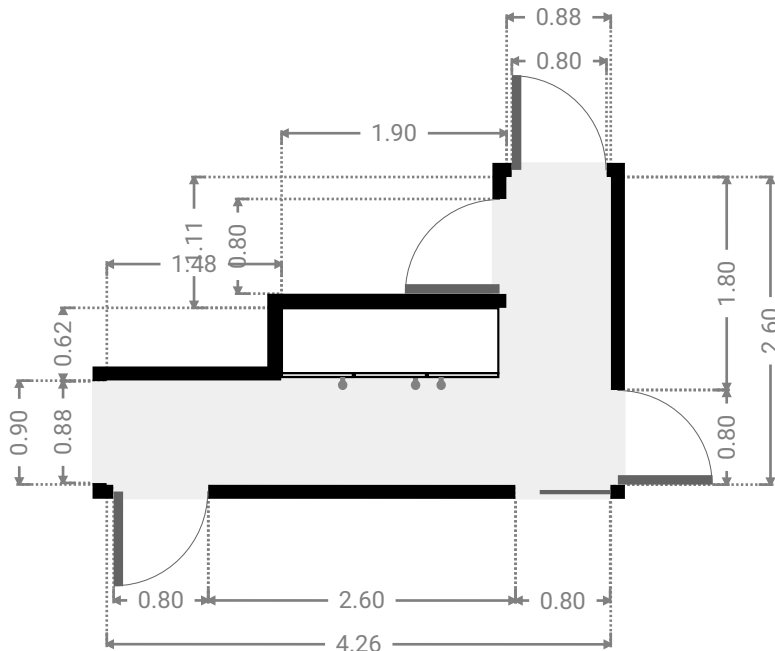
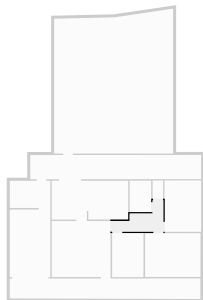
▼ Living Room
Ground Floor

WIDTH: 4.87 m • LENGTH: 4.63 m
AREA: 22.54 m² • PERIMETER: 19.00 m



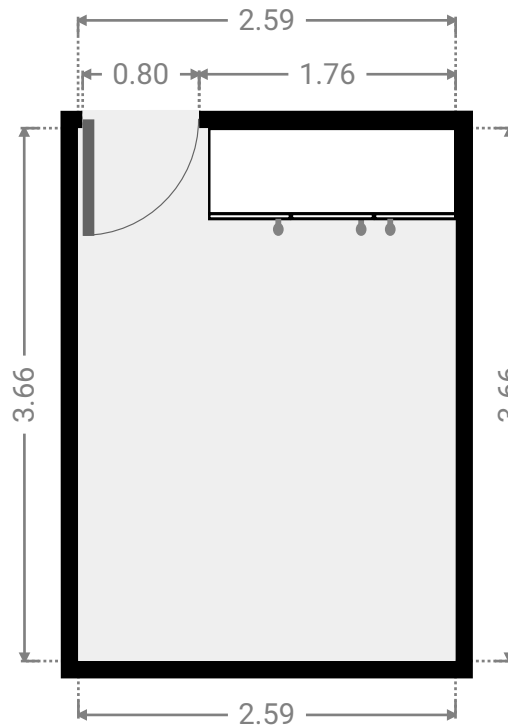
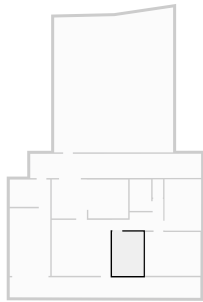
▼ Hall
Ground Floor

WIDTH: 4.26 m • LENGTH: 2.60 m
AREA: 6.43 m² • PERIMETER: 13.72 m



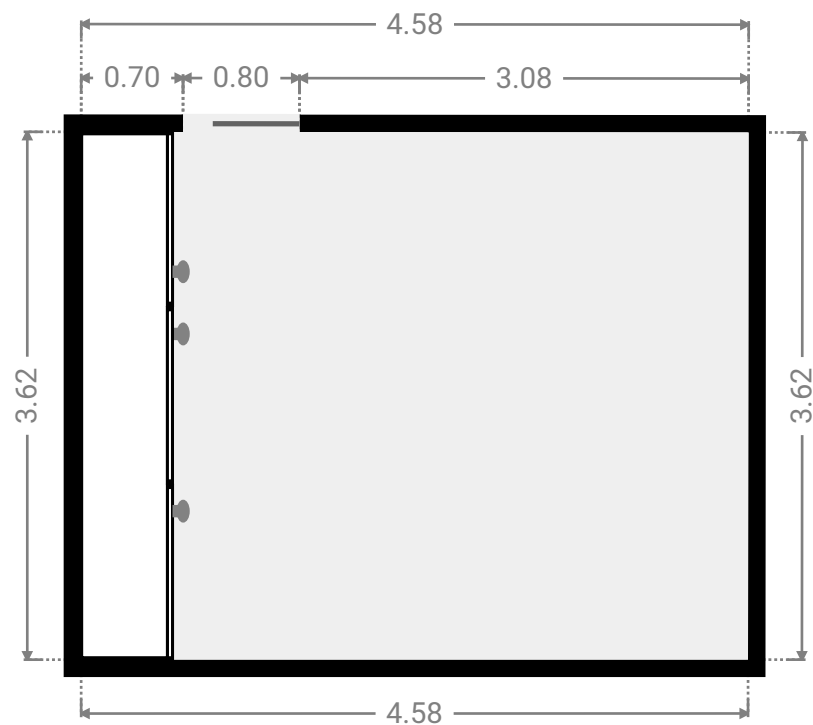
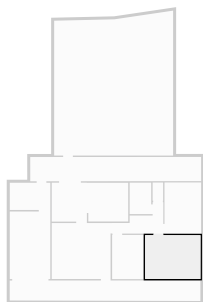
▼ **Bedroom**
Ground Floor

WIDTH: 2.59 m • LENGTH: 3.66 m
AREA: 9.48 m² • PERIMETER: 12.50 m



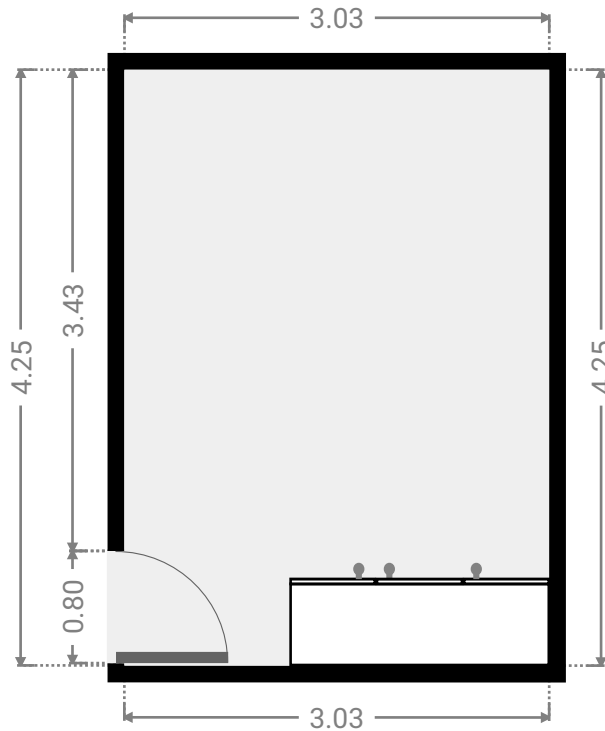
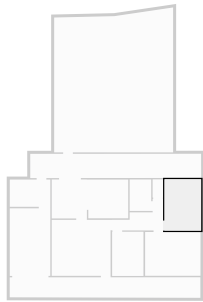
▼ **Bedroom**
Ground Floor

WIDTH: 4.58 m • LENGTH: 3.62 m
AREA: 16.60 m² • PERIMETER: 16.41 m



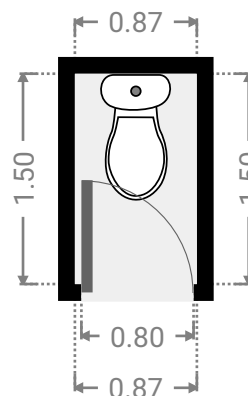
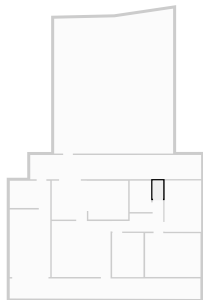
▼ **Bedroom**
Ground Floor

WIDTH: 3.03 m • LENGTH: 4.25 m
AREA: 12.87 m² • PERIMETER: 14.56 m



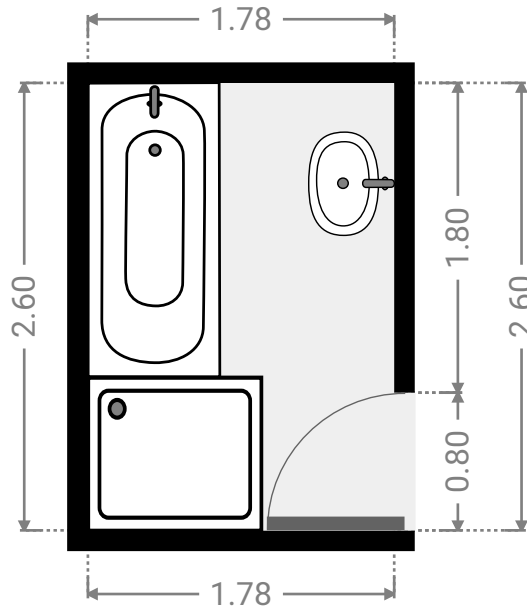
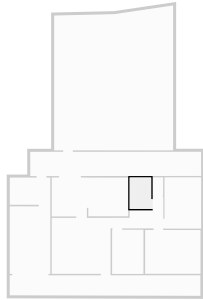
▼ **Toilet**
Ground Floor

WIDTH: 0.87 m • LENGTH: 1.50 m
AREA: 1.30 m² • PERIMETER: 4.74 m



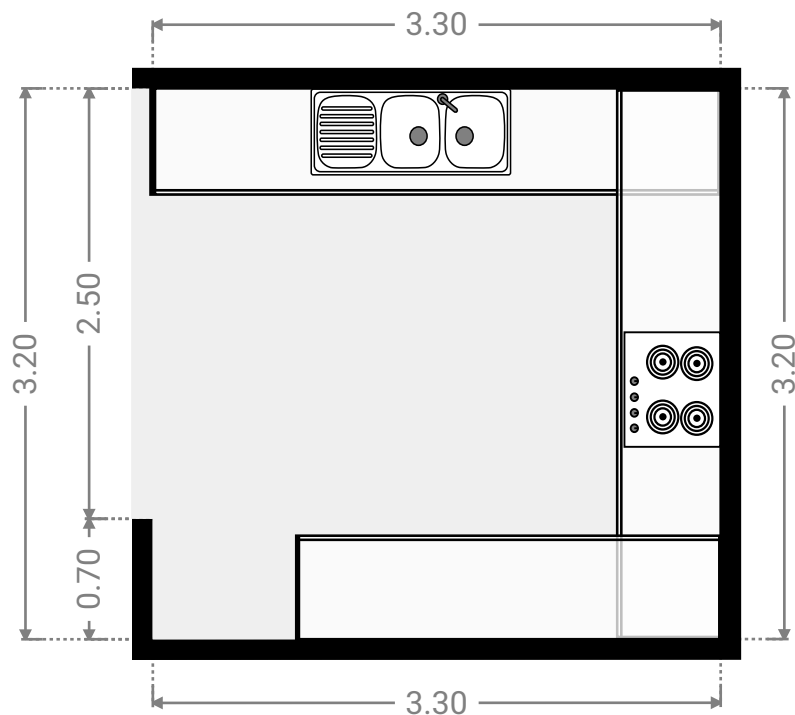
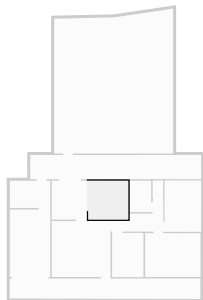
▼ **Bathroom**
Ground Floor

WIDTH: 1.78 m • LENGTH: 2.60 m
AREA: 4.63 m² • PERIMETER: 8.76 m



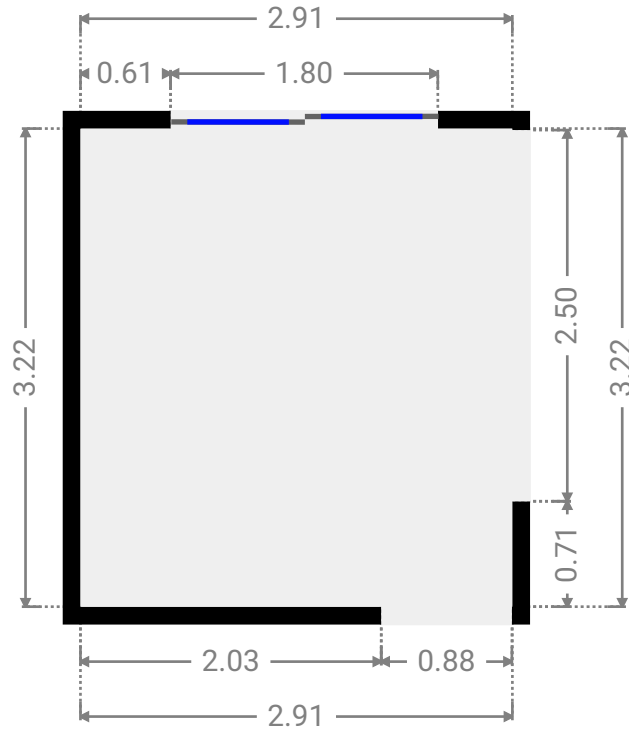
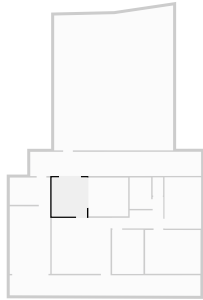
▼ **Kitchen**
Ground Floor

WIDTH: 3.30 m • LENGTH: 3.20 m
AREA: 10.56 m² • PERIMETER: 13.00 m



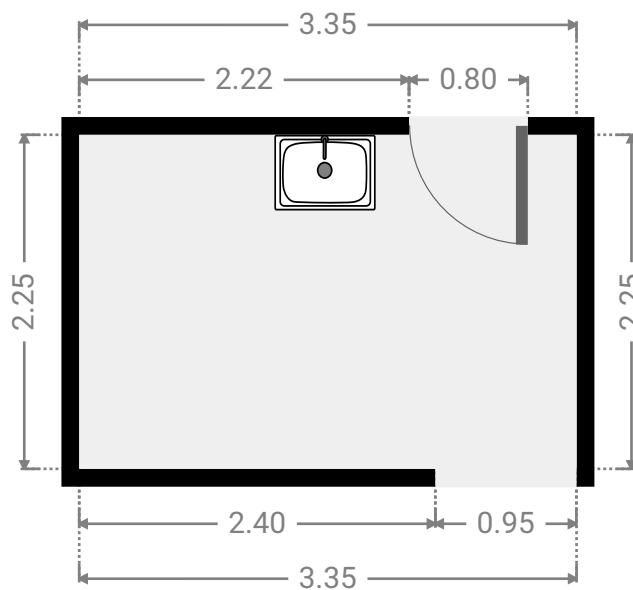
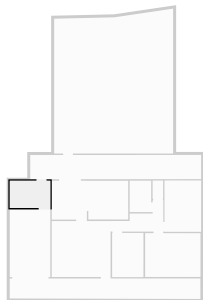
▼ **Dining Room**
Ground Floor

WIDTH: 2.91 m • LENGTH: 3.22 m
AREA: 9.37 m² • PERIMETER: 12.26 m



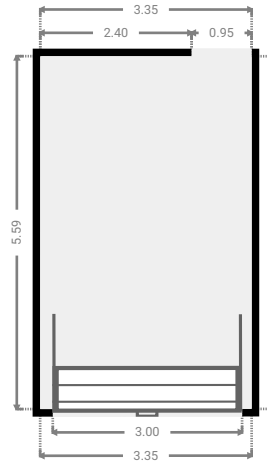
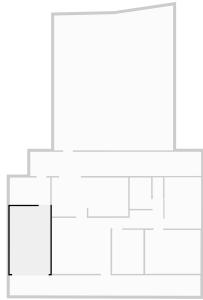
▼ **Laundry Room**
Ground Floor

WIDTH: 3.35 m • LENGTH: 2.25 m
AREA: 7.54 m² • PERIMETER: 11.20 m



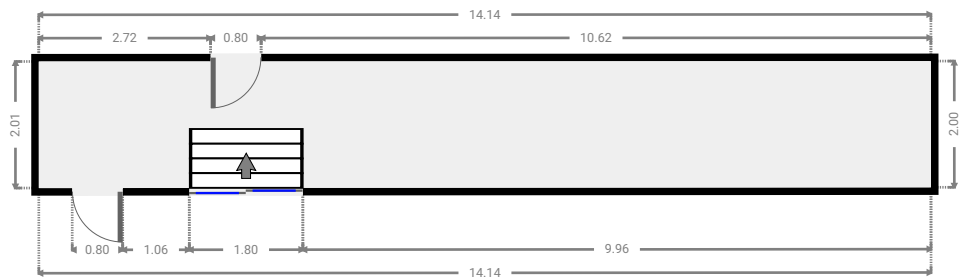
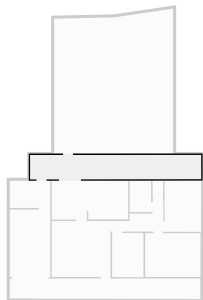
▼ **Garage**
Ground Floor

WIDTH: 3.35 m • LENGTH: 5.59 m
AREA: 18.73 m² • PERIMETER: 17.88 m



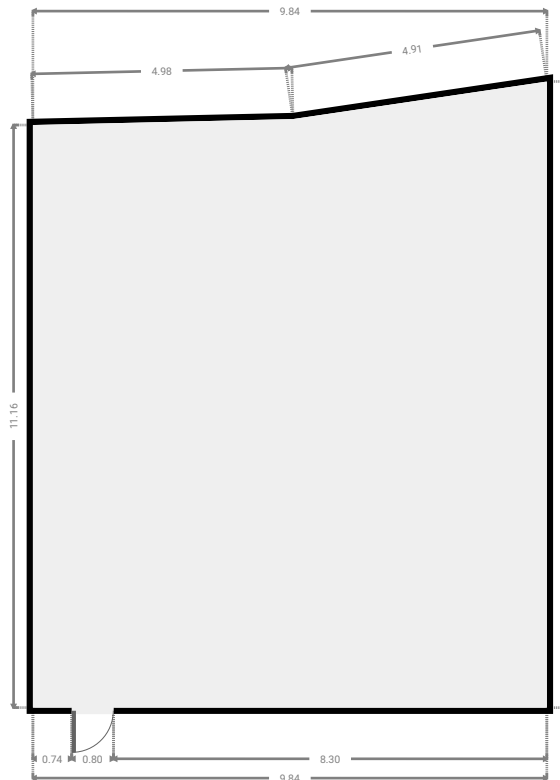
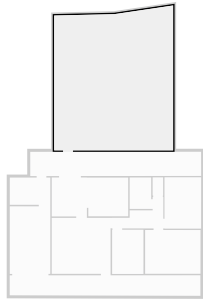
▼ **Other**
Ground Floor

WIDTH: 14.14 m • LENGTH: 2.01 m
AREA: 28.32 m² • PERIMETER: 32.29 m



▼ Other
Ground Floor

WIDTH: 9.84 m • LENGTH: 11.99 m
AREA: 112.39 m² • PERIMETER: 42.89 m



▼ Other
Ground Floor

WIDTH: 15.78 m • LENGTH: 1.70 m
AREA: 26.42 m² • PERIMETER: 34.90 m

