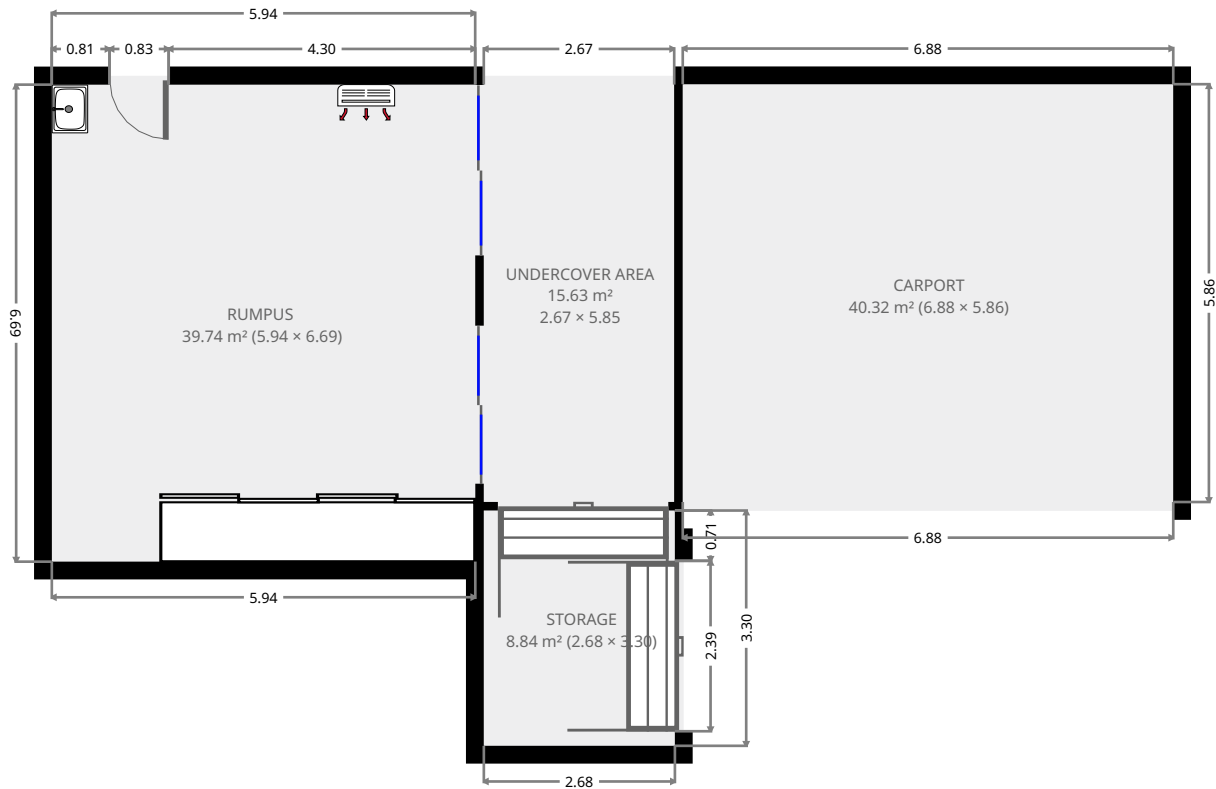


301 Everingham Avenue

Ground Floor



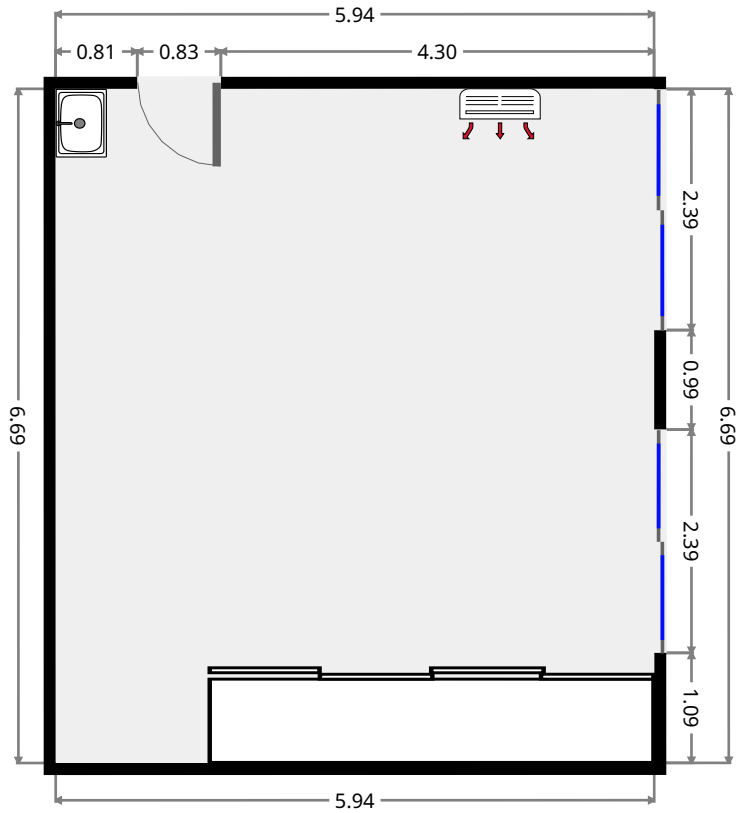
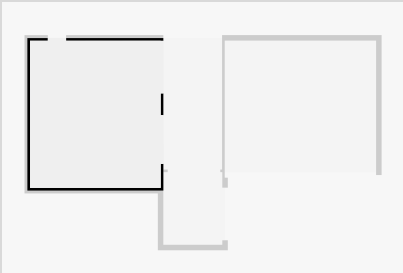
THIS FLOORPLAN IS PROVIDED WITHOUT WARRANTY OF ANY KIND. SENSOPIA DISCLAIMS ANY WARRANTY INCLUDING, WITHOUT LIMITATION, SATISFACTORY QUALITY OR ACCURACY OF DIMENSIONS.



301 Everingham Avenue

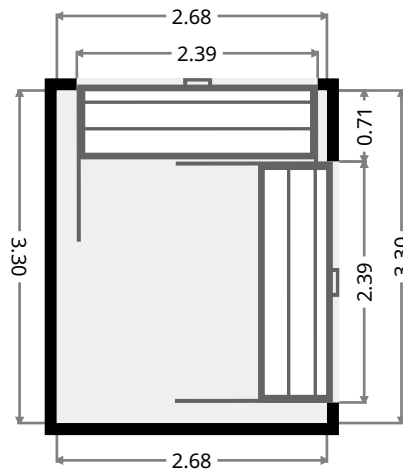
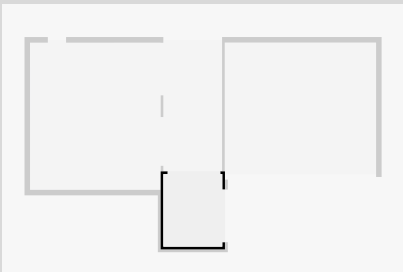
Rumpus

Width: 5.94 m
 Length: 6.69 m
 Area: 39.74 m²
 Perimeter: 25.26 m



Storage

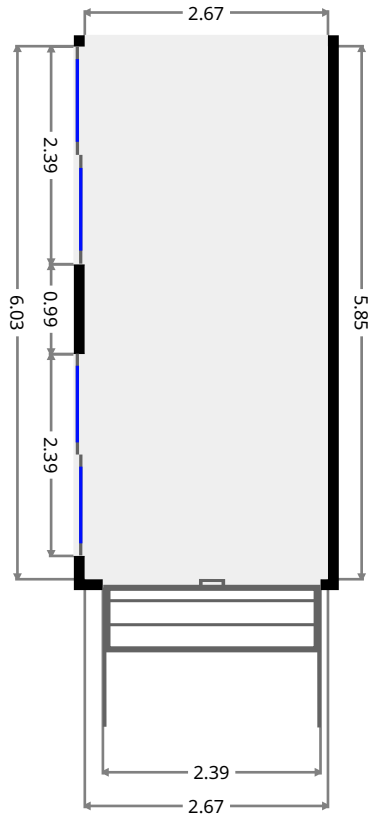
Width: 2.68 m
 Length: 3.30 m
 Area: 8.84 m²
 Perimeter: 11.96 m



301 Everingham Avenue

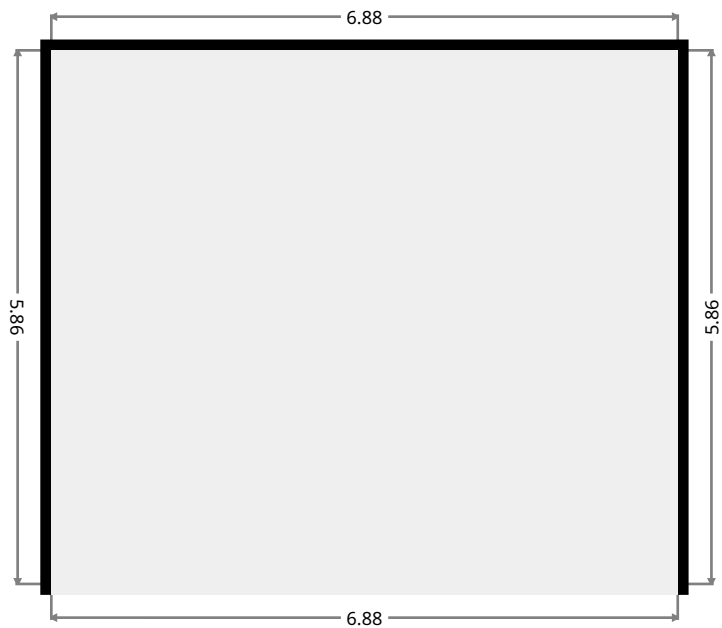
UnderCover Area

Width: 2.67 m
Length: 5.85 m
Area: 15.63 m²
Perimeter: 17.05 m



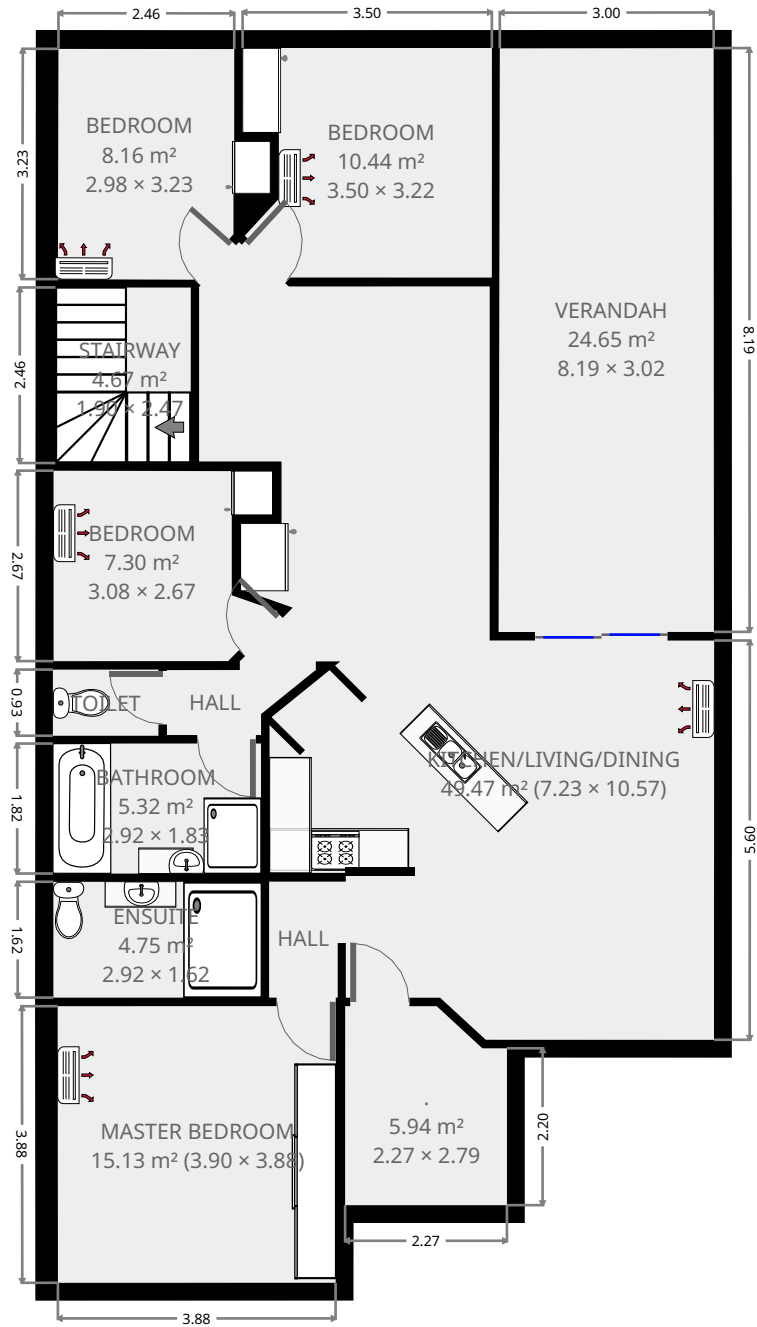
Carport

Width: 5.86 m
Length: 6.88 m
Area: 40.32 m²
Perimeter: 25.48 m

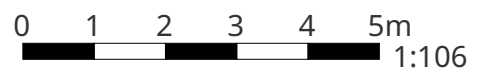


301 Everingham Avenue

1st Floor



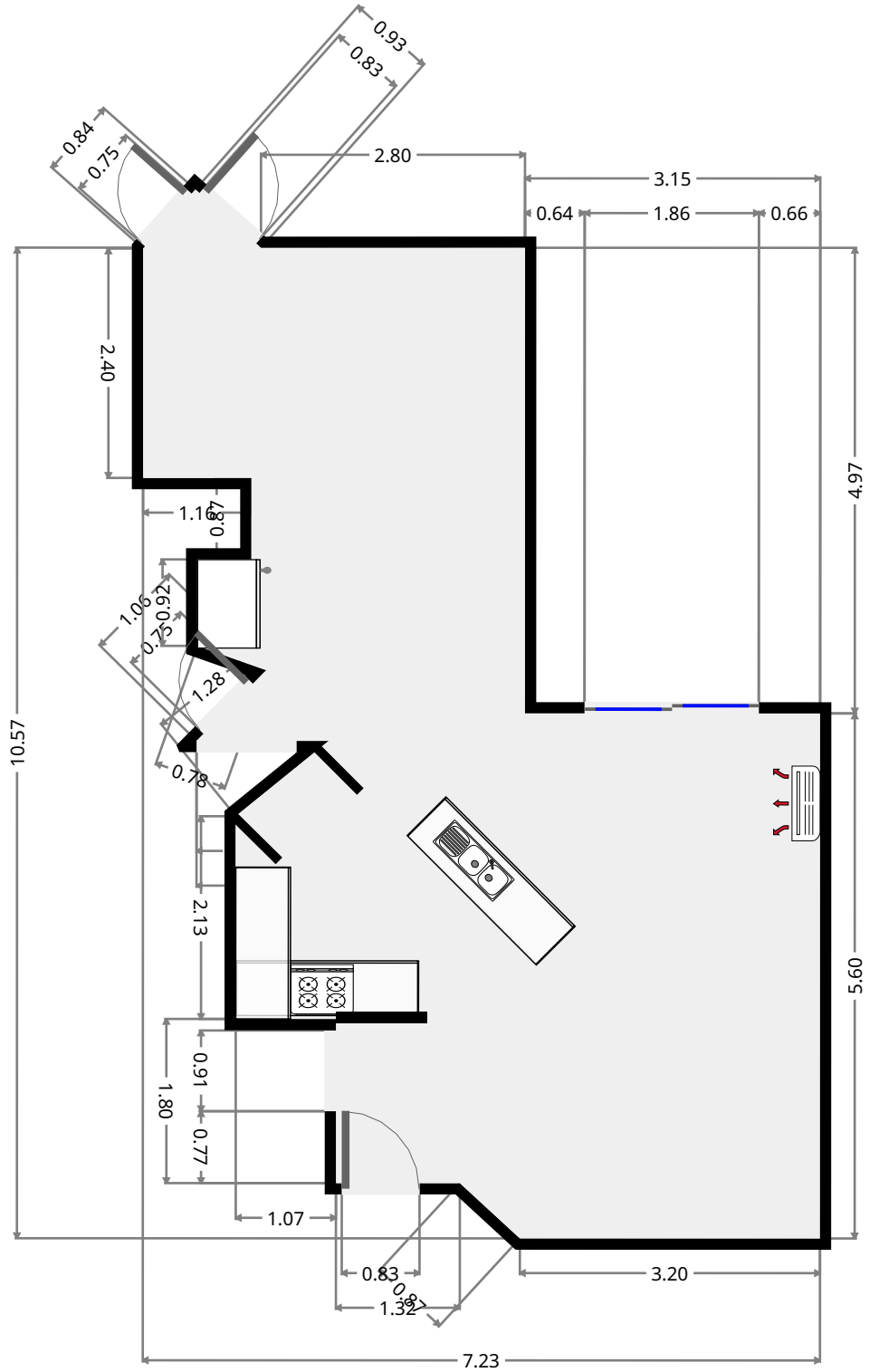
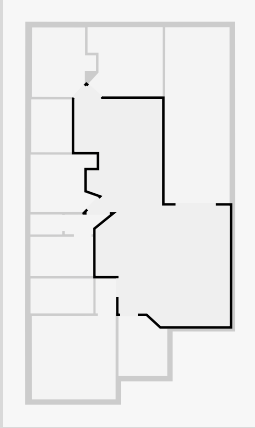
THIS FLOORPLAN IS PROVIDED WITHOUT WARRANTY OF ANY KIND. SENSOPIA DISCLAIMS ANY WARRANTY INCLUDING, WITHOUT LIMITATION, SATISFACTORY QUALITY OR ACCURACY OF DIMENSIONS.



301 Everingham Avenue

Kitchen/Living/Dining

Width: 7.23 m
 Length: 10.57 m
 Area: 49.47 m²
 Perimeter: 39.19 m



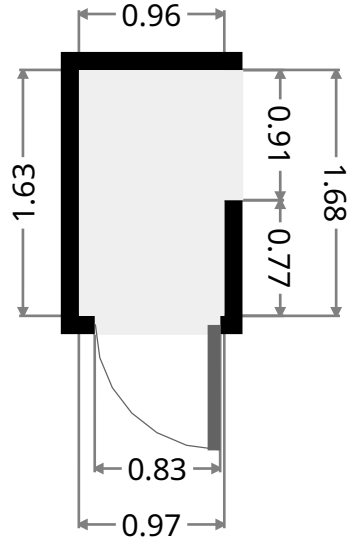
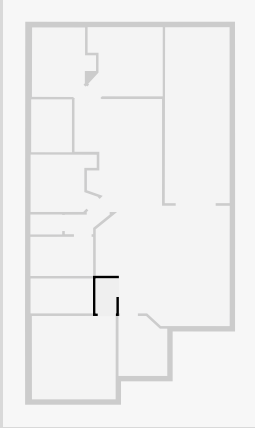
THIS FLOORPLAN IS PROVIDED WITHOUT WARRANTY OF ANY KIND. SENSOPIA DISCLAIMS ANY WARRANTY INCLUDING, WITHOUT LIMITATION, SATISFACTORY QUALITY OR ACCURACY OF DIMENSIONS.



301 Everingham Avenue

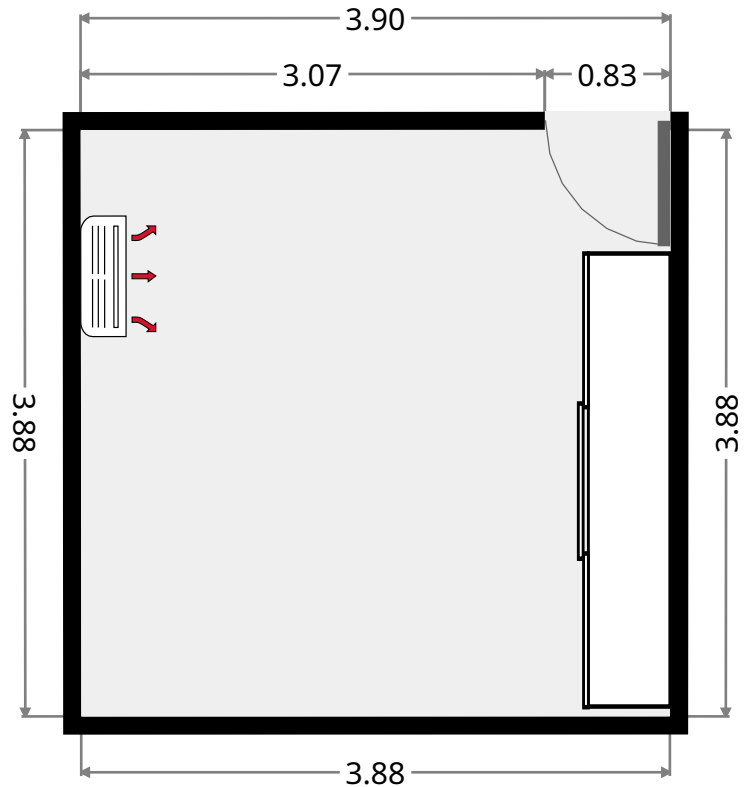
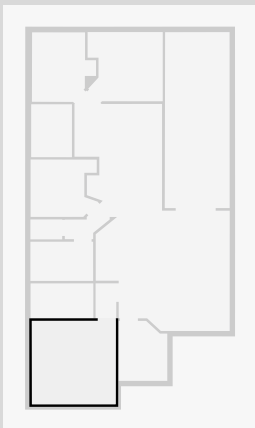
Hall

Width: 0.96 m
Length: 1.63 m
Area: 1.57 m²
Perimeter: 5.18 m

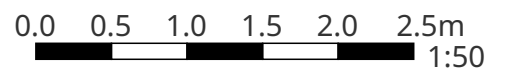


Master Bedroom

Width: 3.88 m
Length: 3.90 m
Area: 15.13 m²
Perimeter: 15.56 m



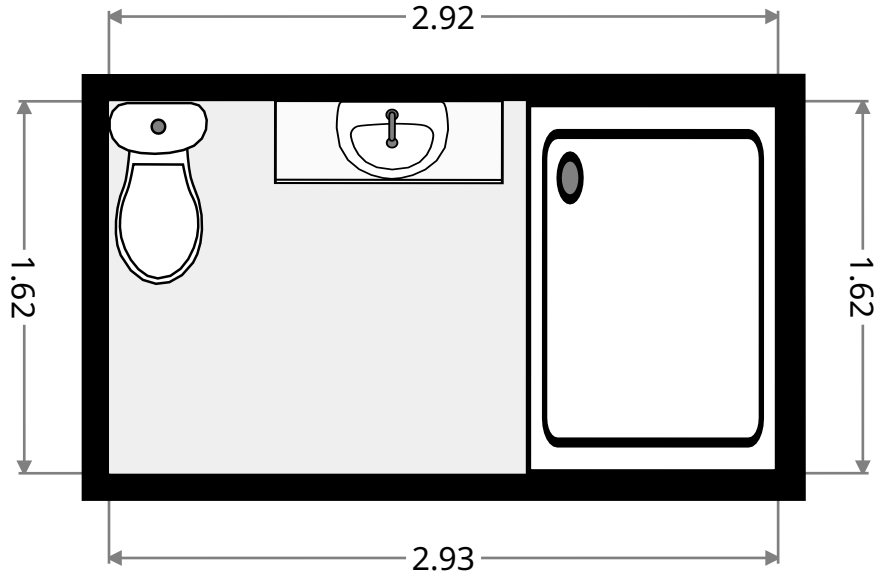
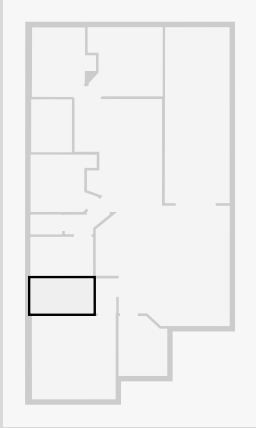
THIS FLOORPLAN IS PROVIDED WITHOUT WARRANTY OF ANY KIND. SENSOPIA DISCLAIMS ANY WARRANTY INCLUDING, WITHOUT LIMITATION, SATISFACTORY QUALITY OR ACCURACY OF DIMENSIONS.



301 Everingham Avenue

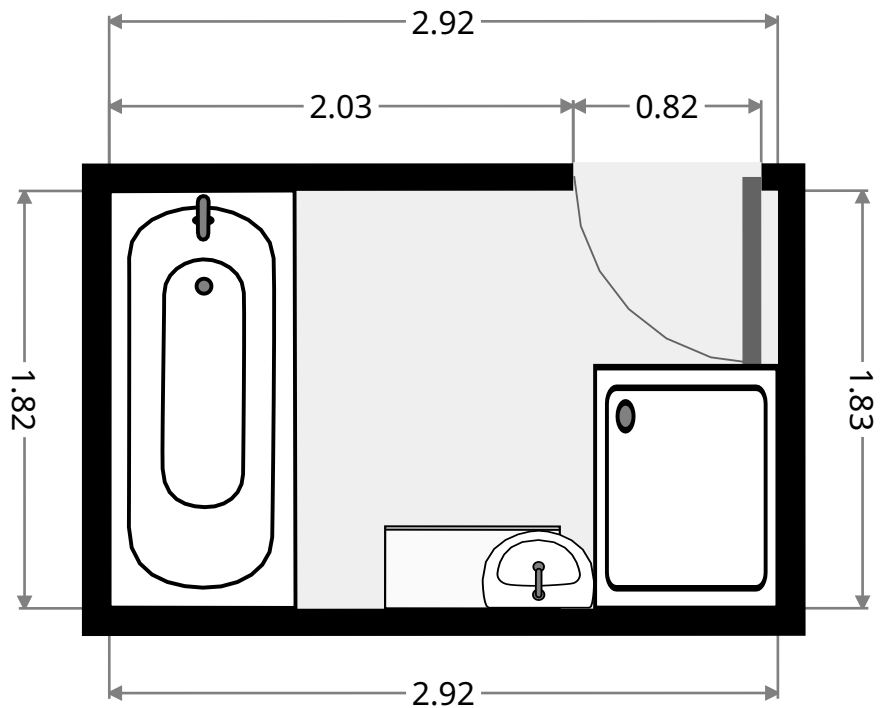
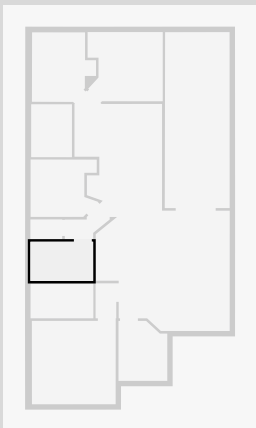
Ensuite

Width: 1.62 m
Length: 2.92 m
Area: 4.75 m²
Perimeter: 9.09 m

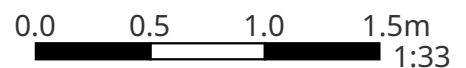


Bathroom

Width: 1.83 m
Length: 2.92 m
Area: 5.32 m²
Perimeter: 9.48 m



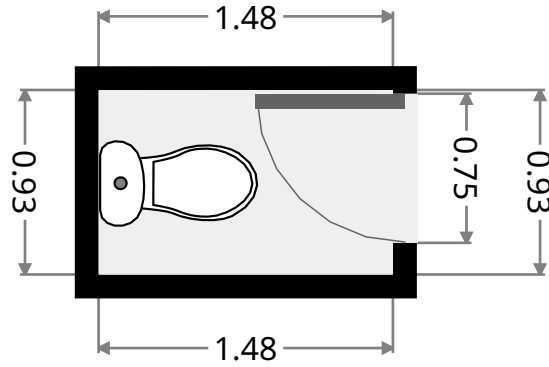
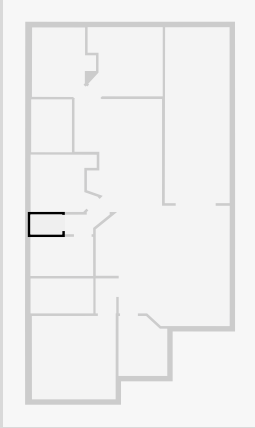
THIS FLOORPLAN IS PROVIDED WITHOUT WARRANTY OF ANY KIND. SENSOPIA DISCLAIMS ANY WARRANTY INCLUDING, WITHOUT LIMITATION, SATISFACTORY QUALITY OR ACCURACY OF DIMENSIONS.



301 Everingham Avenue

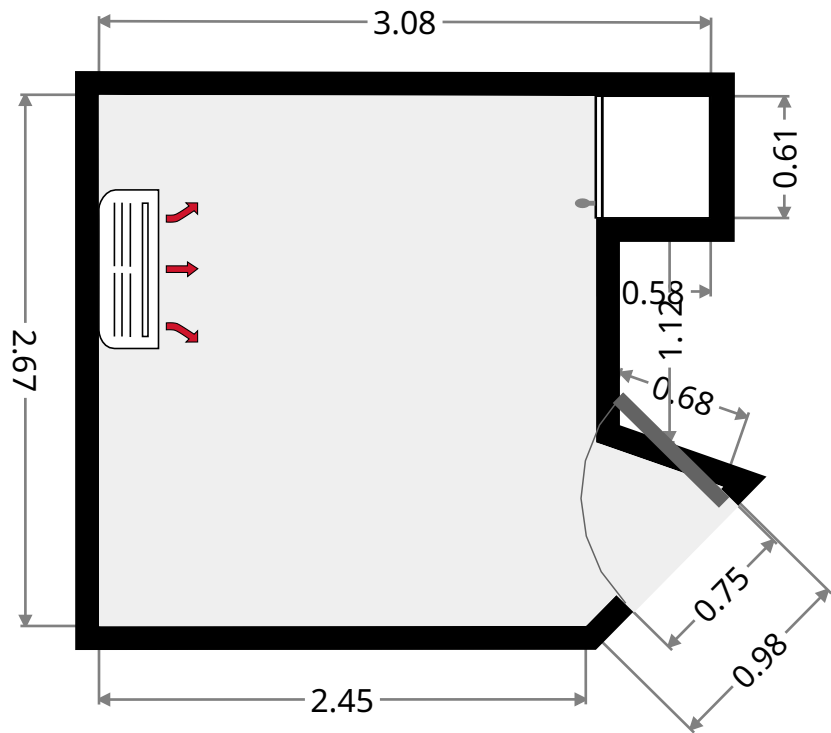
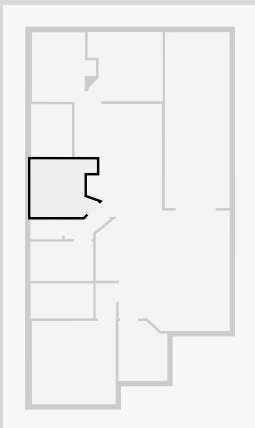
Toilet

Width: 0.93 m
Length: 1.48 m
Area: 1.37 m²
Perimeter: 4.82 m



Bedroom

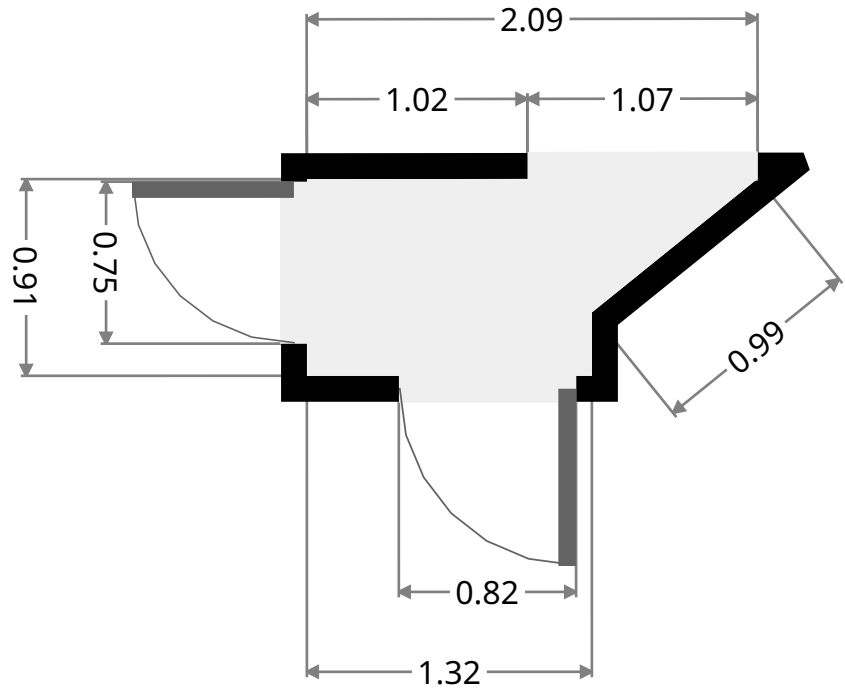
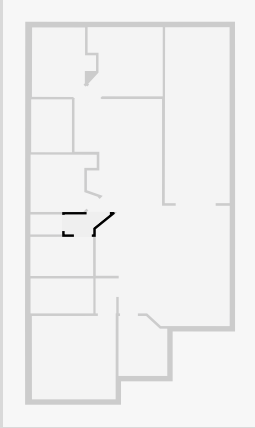
Width: 2.67 m
Length: 3.08 m
Area: 7.30 m²
Perimeter: 12.17 m



301 Everingham Avenue

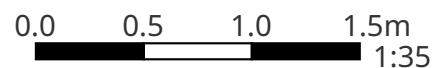
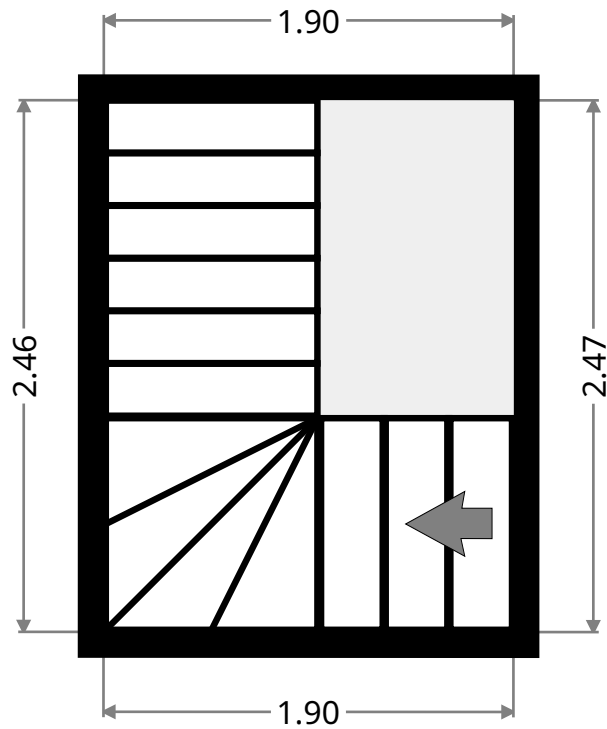
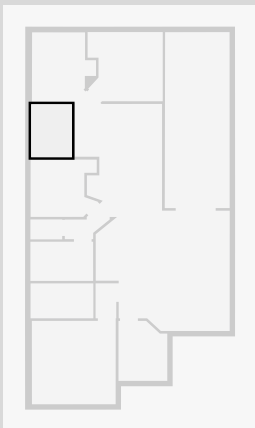
Hall

Width: 0.91 m
 Length: 2.09 m
 Area: 1.44 m²
 Perimeter: 5.60 m



Stairway

Width: 1.90 m
 Length: 2.47 m
 Area: 4.67 m²
 Perimeter: 8.72 m

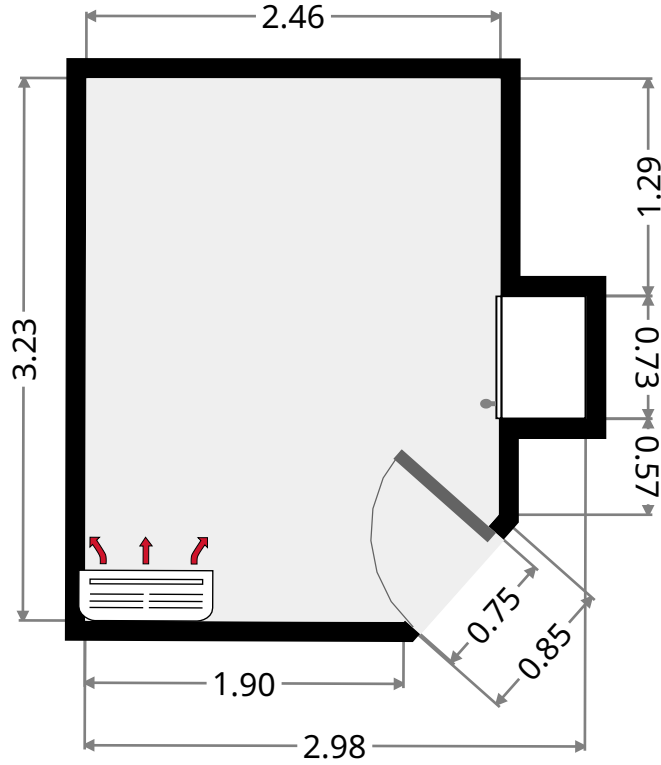
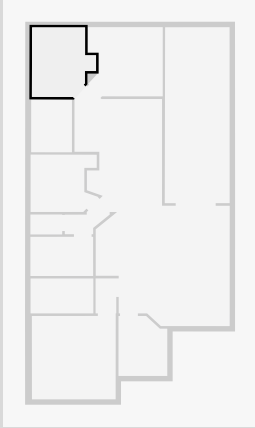


THIS FLOORPLAN IS PROVIDED WITHOUT WARRANTY OF ANY KIND. SENSOPIA DISCLAIMS ANY WARRANTY INCLUDING, WITHOUT LIMITATION, SATISFACTORY QUALITY OR ACCURACY OF DIMENSIONS.

301 Everingham Avenue

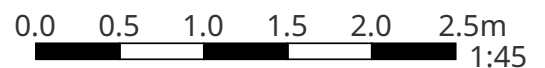
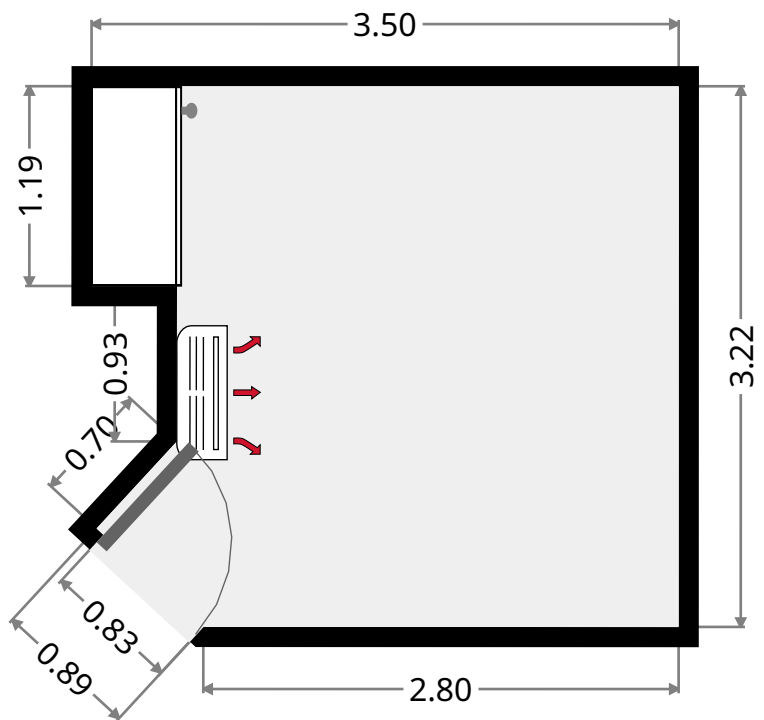
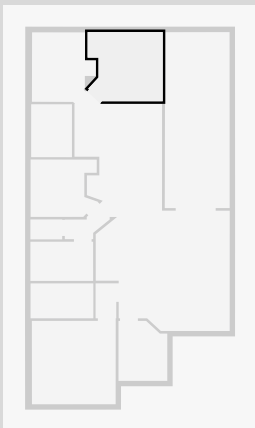
Bedroom

Width: 2.98 m
 Length: 3.23 m
 Area: 8.16 m²
 Perimeter: 12.07 m



Bedroom

Width: 3.22 m
 Length: 3.50 m
 Area: 10.44 m²
 Perimeter: 13.74 m

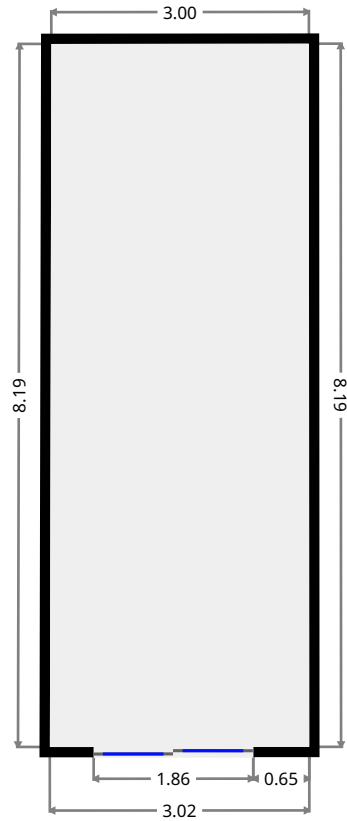
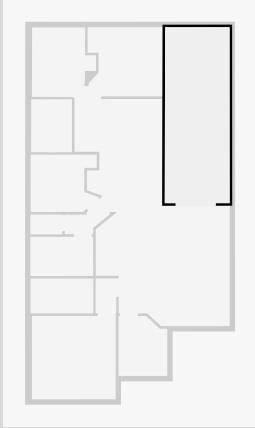


THIS FLOORPLAN IS PROVIDED WITHOUT WARRANTY OF ANY KIND. SENSOPIA DISCLAIMS ANY WARRANTY INCLUDING, WITHOUT LIMITATION, SATISFACTORY QUALITY OR ACCURACY OF DIMENSIONS.

301 Everingham Avenue

Verandah

Width: 3.02 m
 Length: 8.19 m
 Area: 24.65 m²
 Perimeter: 22.39 m



•
 Width: 2.27 m
 Length: 2.79 m
 Area: 5.94 m²
 Perimeter: 9.76 m

