

31 Stirling Avenue

SUBMITTED BY

Ray White Rockhampton Casey
stockers@cqoz.com

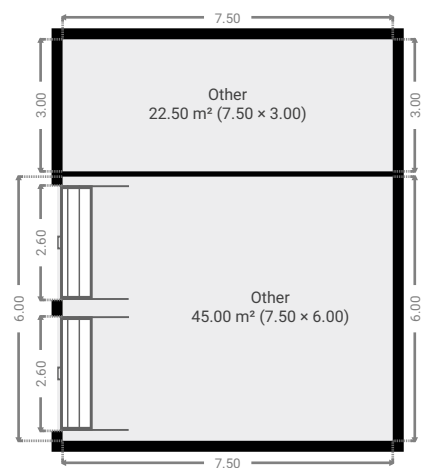
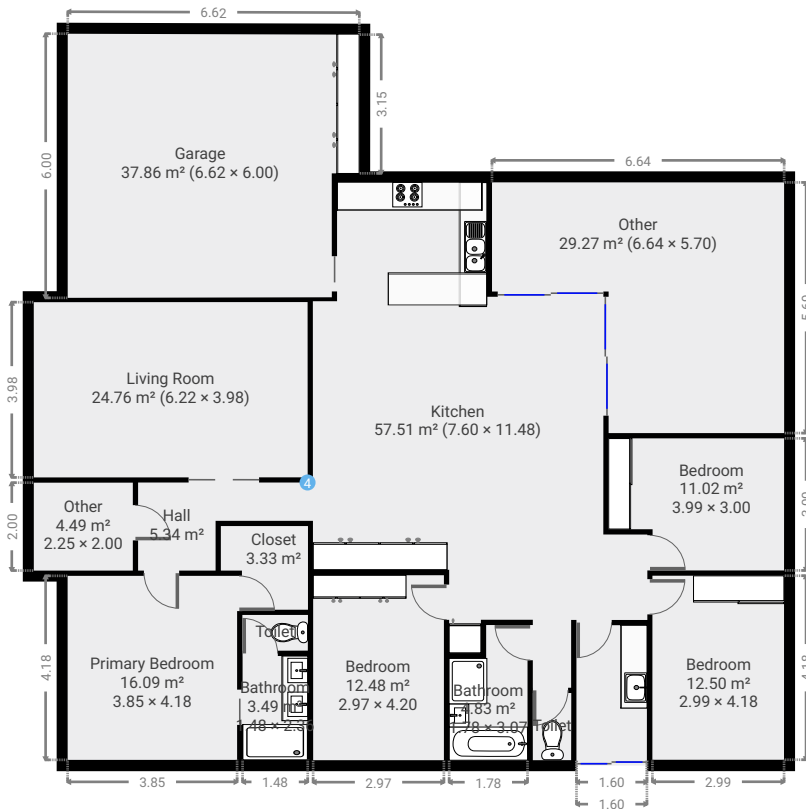
CREATED ON

2022-05-10

Floors

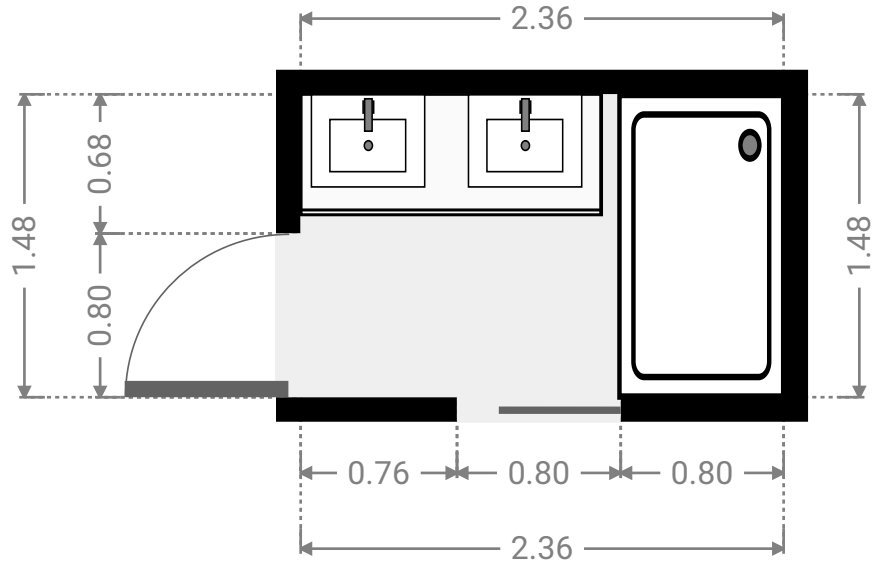
1

▼ Ground Floor



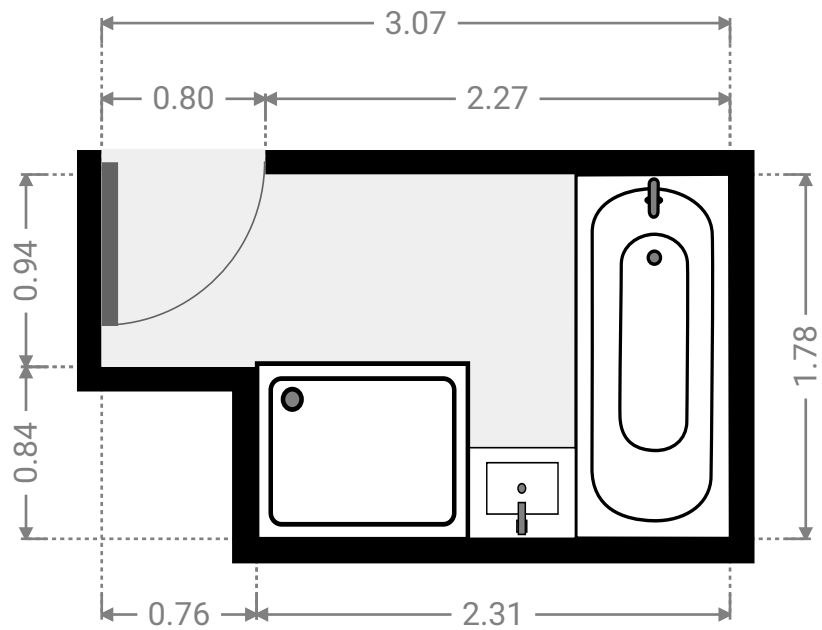
▼ **Bathroom**
Ground Floor

WIDTH: 2.36 m • LENGTH: 1.48 m
AREA: 3.49 m² • PERIMETER: 7.68 m



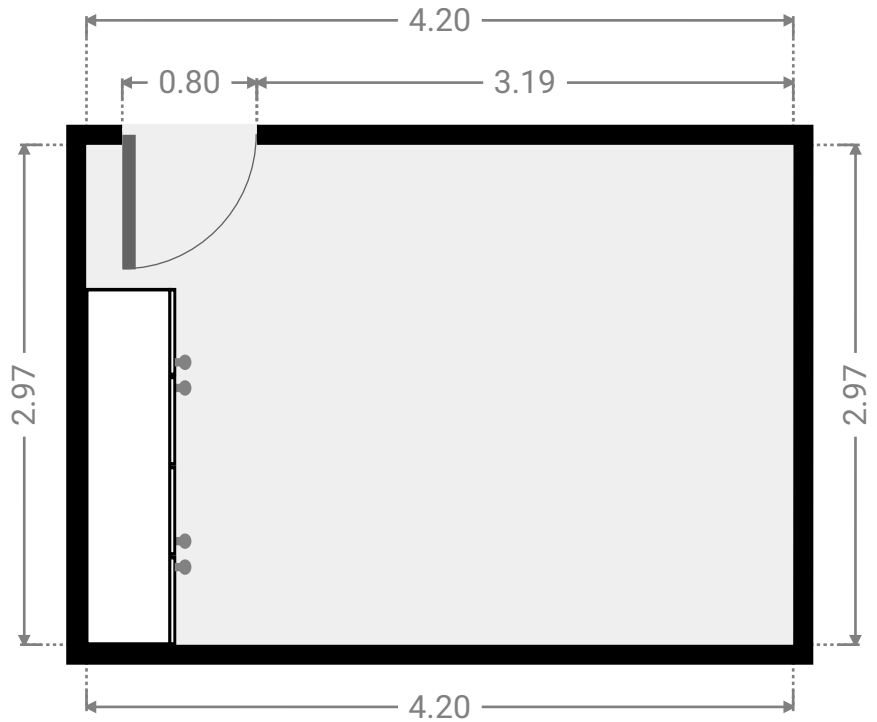
▼ **Bathroom**
Ground Floor

WIDTH: 3.07 m • LENGTH: 1.78 m
AREA: 4.83 m² • PERIMETER: 9.70 m



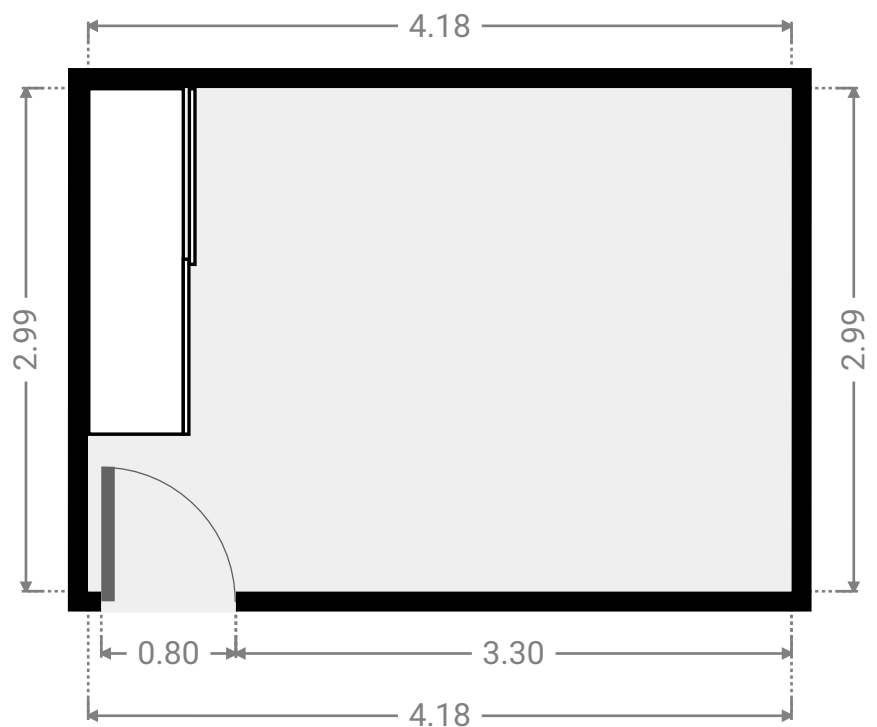
▼ **Bedroom**
Ground Floor

WIDTH: 4.20 m • LENGTH: 2.97 m
AREA: 12.48 m² • PERIMETER: 14.34 m



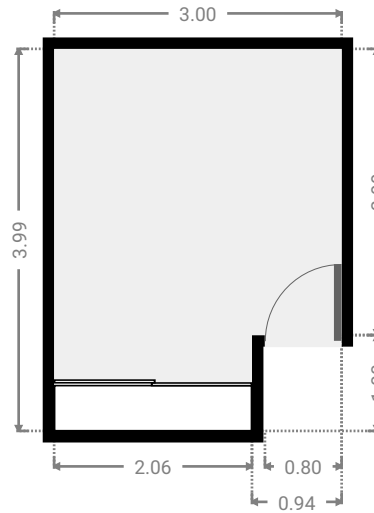
▼ **Bedroom**
Ground Floor

WIDTH: 4.18 m • LENGTH: 2.99 m
AREA: 12.50 m² • PERIMETER: 14.34 m



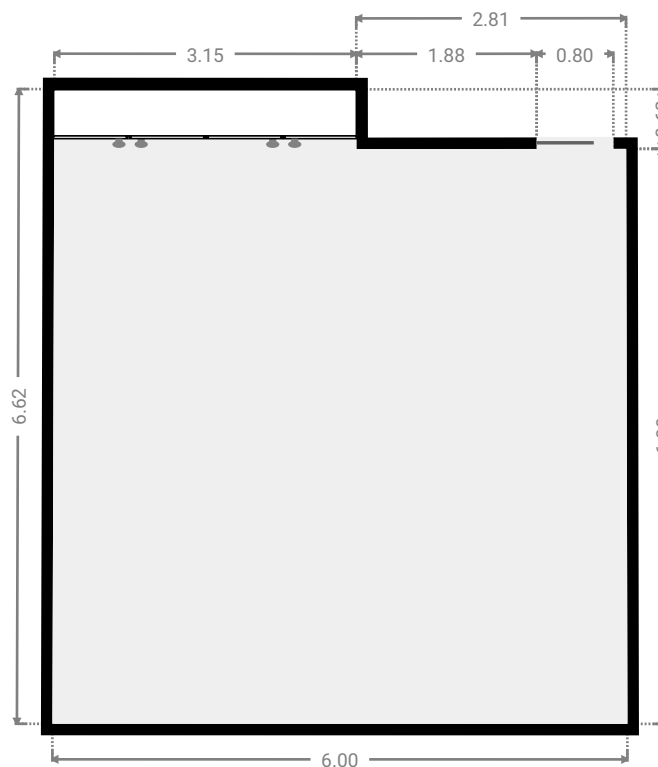
▼ **Bedroom**
Ground Floor

WIDTH: 3.00 m • LENGTH: 3.99 m
AREA: 11.02 m² • PERIMETER: 13.97 m



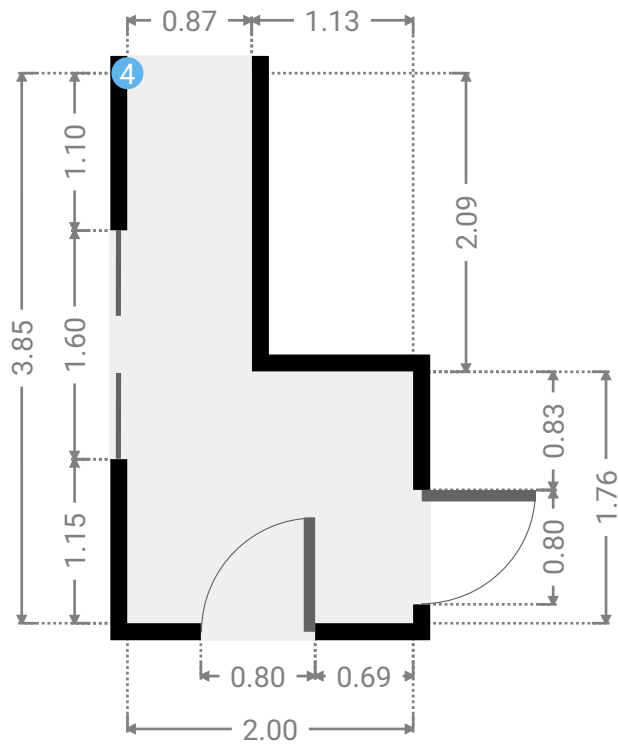
▼ **Garage**
Ground Floor

WIDTH: 6.00 m • LENGTH: 6.62 m
AREA: 37.86 m² • PERIMETER: 25.21 m



▼ Hall Ground Floor

WIDTH: 2.00 m • LENGTH: 3.85 m
AREA: 5.34 m² • PERIMETER: 11.70 m



▼ Hall/Ground Floor

4 OPENING

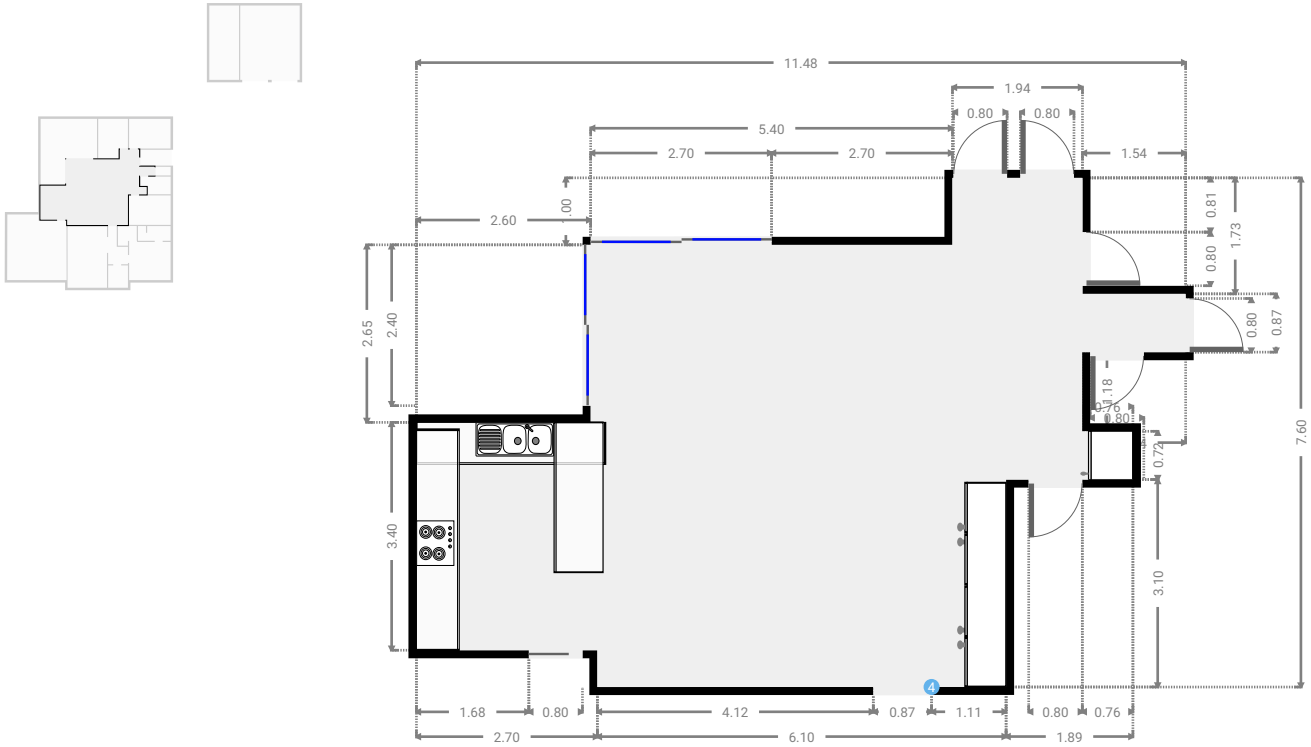
Height
0.00 m



FLOORS: 1

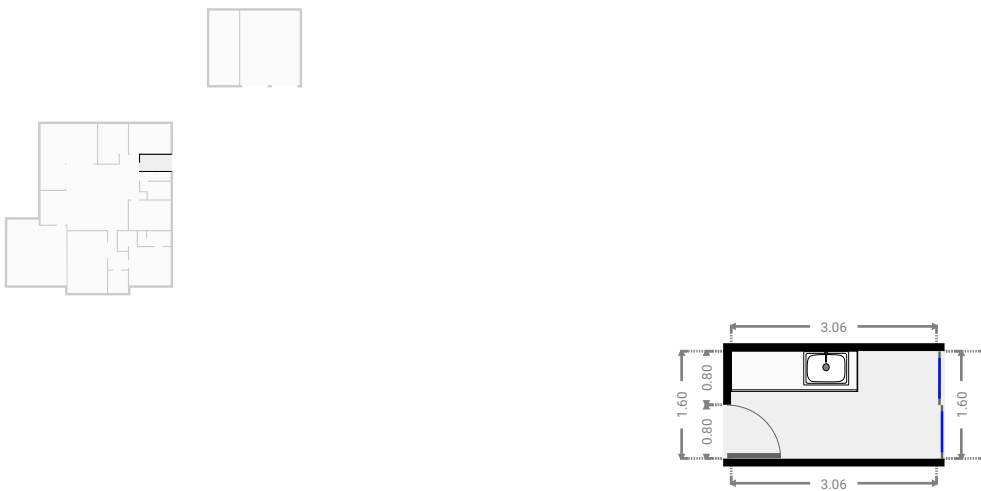
▼ Kitchen
Ground Floor

WIDTH: 11.48 m • LENGTH: 7.60 m
AREA: 57.51 m² • PERIMETER: 39.67 m



▼ Laundry Room
Ground Floor

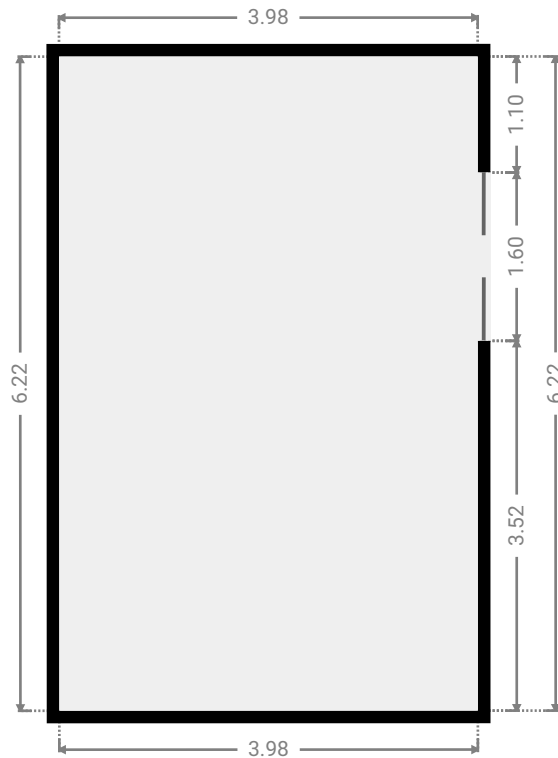
WIDTH: 3.06 m • LENGTH: 1.60 m
AREA: 4.90 m² • PERIMETER: 9.33 m



FLOORS: 1

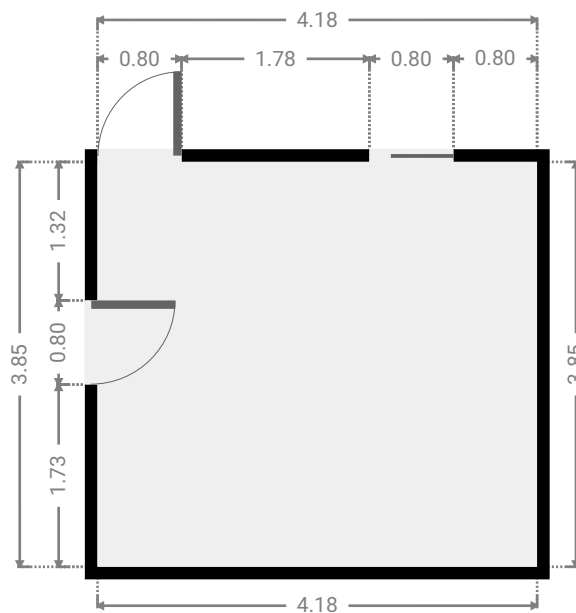
▼ **Living Room**
Ground Floor

WIDTH: 3.98 m • LENGTH: 6.22 m
AREA: 24.76 m² • PERIMETER: 20.40 m



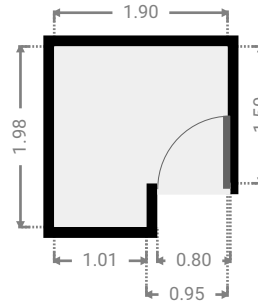
▼ **Primary Bedroom**
Ground Floor

WIDTH: 4.18 m • LENGTH: 3.85 m
AREA: 16.09 m² • PERIMETER: 16.06 m



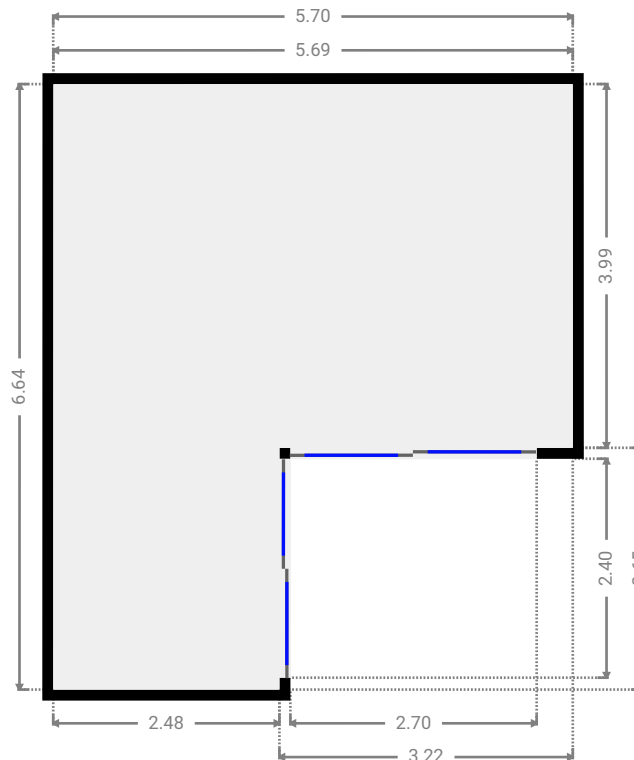
▼ Closet Ground Floor

WIDTH: 1.90 m • LENGTH: 1.98 m
AREA: 3.33 m² • PERIMETER: 7.76 m



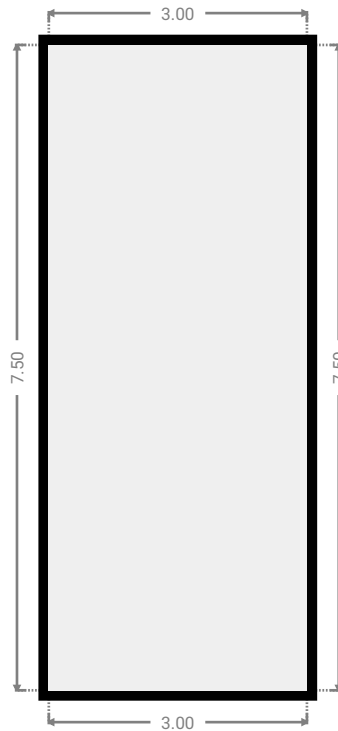
▼ Other Ground Floor

WIDTH: 5.70 m • LENGTH: 6.64 m
AREA: 29.27 m² • PERIMETER: 24.66 m



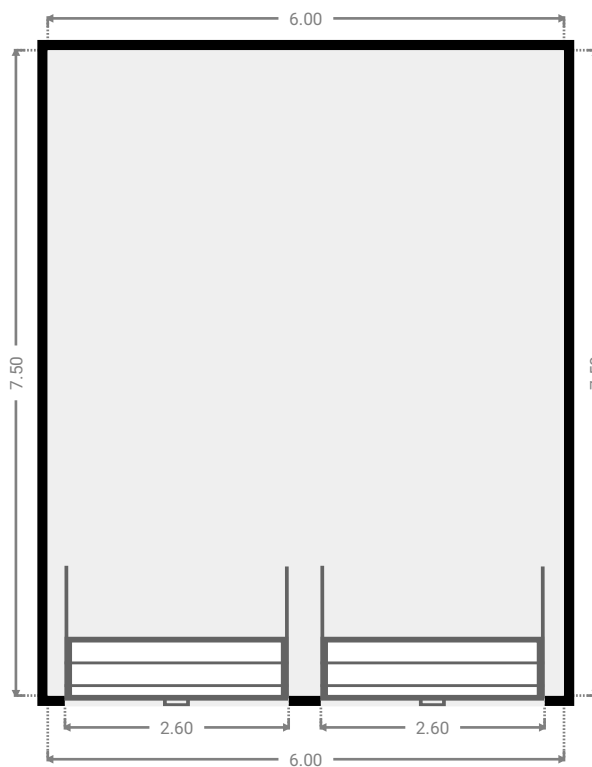
▼ Other
Ground Floor

WIDTH: 3.00 m • LENGTH: 7.50 m
AREA: 22.50 m² • PERIMETER: 21.00 m



▼ Other
Ground Floor

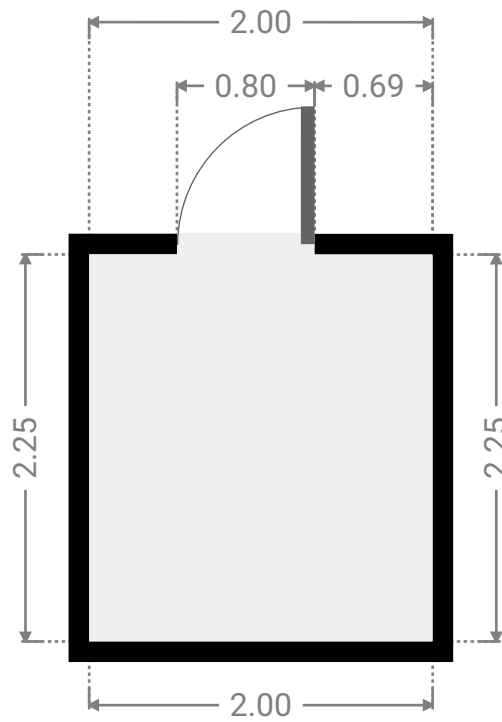
WIDTH: 6.00 m • LENGTH: 7.50 m
AREA: 45.00 m² • PERIMETER: 27.00 m



FLOORS: 1

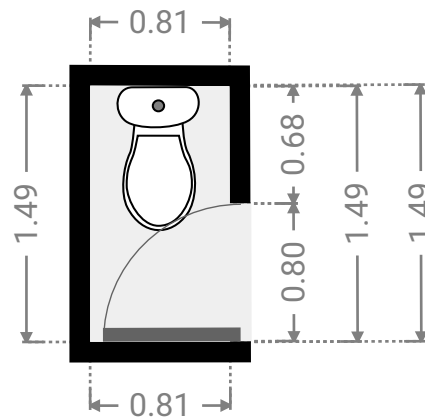
▼ Other
Ground Floor

WIDTH: 2.00 m • LENGTH: 2.25 m
AREA: 4.49 m² • PERIMETER: 8.49 m



▼ Toilet
Ground Floor

WIDTH: 0.81 m • LENGTH: 1.49 m
AREA: 1.21 m² • PERIMETER: 4.60 m



▼ Toilet
Ground Floor

WIDTH: 1.53 m • LENGTH: 0.87 m
AREA: 1.33 m² • PERIMETER: 4.79 m

