

30 Lamb Avenue

Created on
2017-11-16

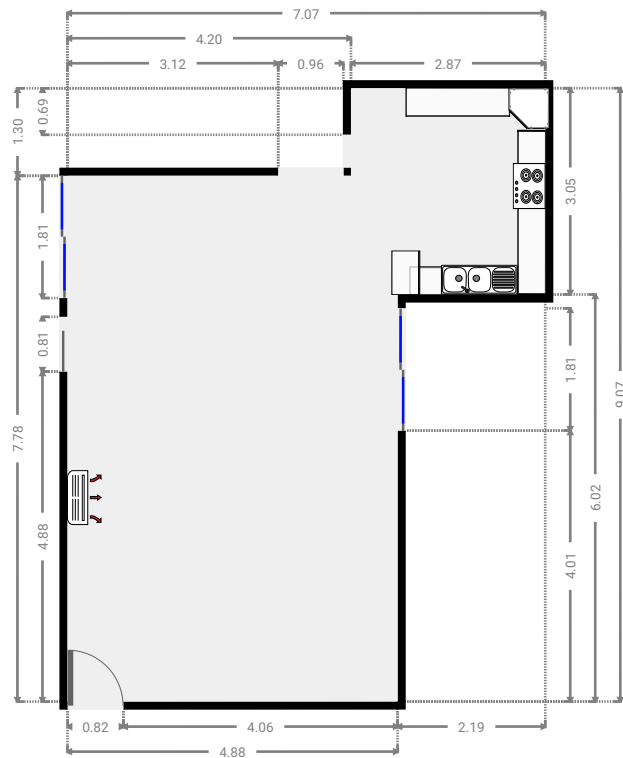
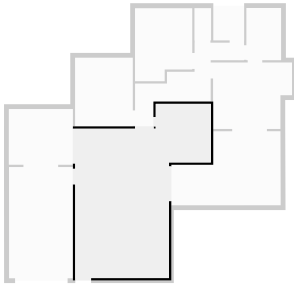
Floors
1

▼ Ground Floor



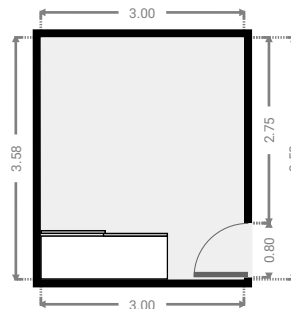
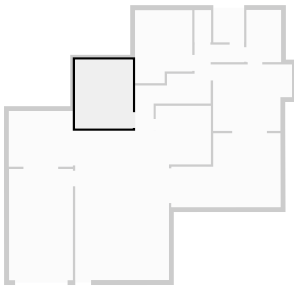
▼ **Living Room**
Ground Floor

WIDTH: 7.07 m • LENGTH: 9.07 m
AREA: 45.53 m² • PERIMETER: 32.28 m



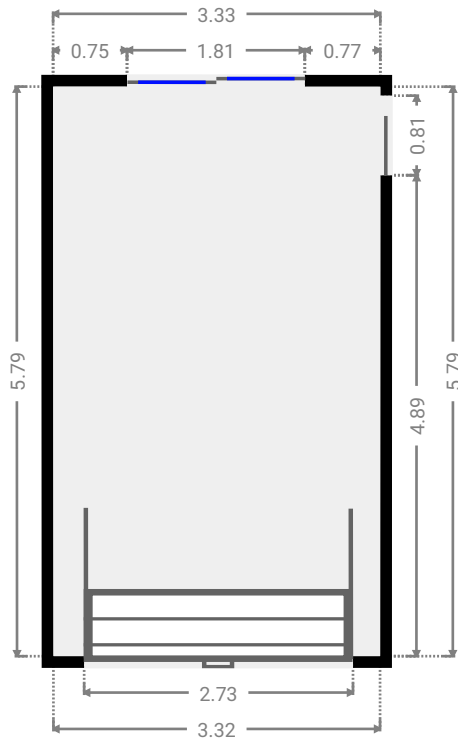
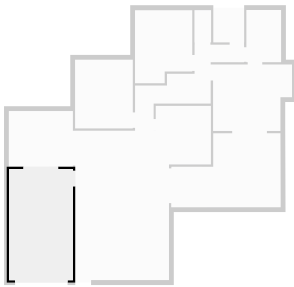
▼ **Bedroom**
Ground Floor

WIDTH: 3.01 m • LENGTH: 3.58 m
AREA: 10.75 m² • PERIMETER: 13.16 m



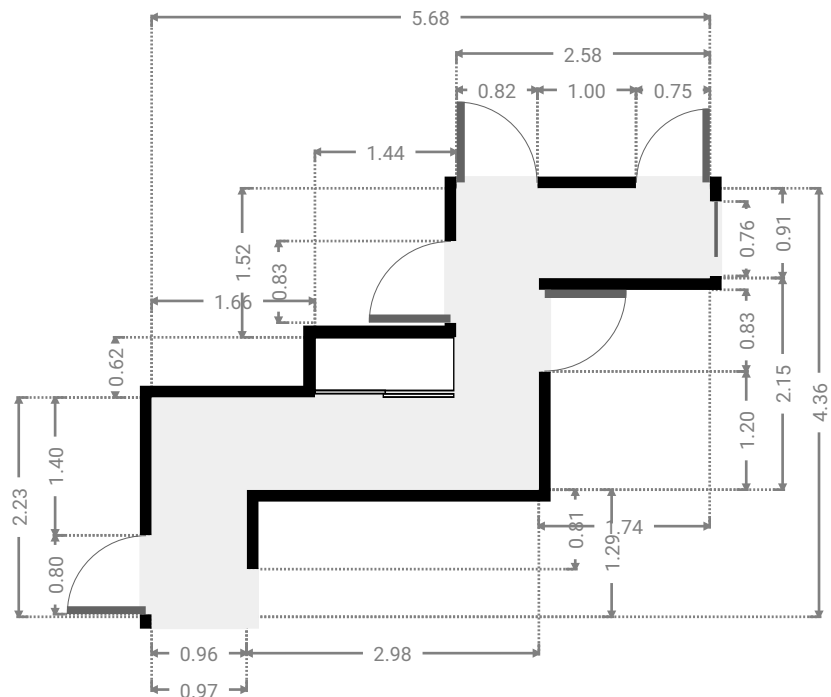
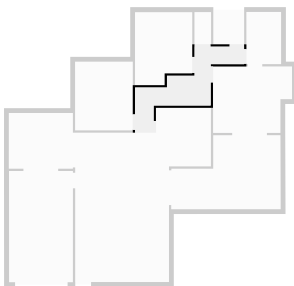
▼ Garage
Ground Floor

WIDTH: 3.33 m • LENGTH: 5.79 m
AREA: 19.26 m² • PERIMETER: 18.23 m



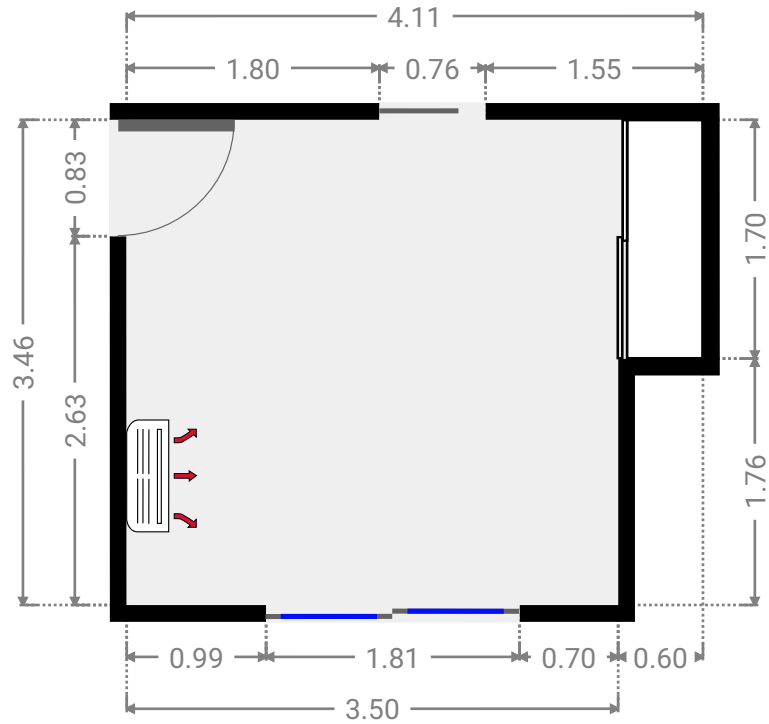
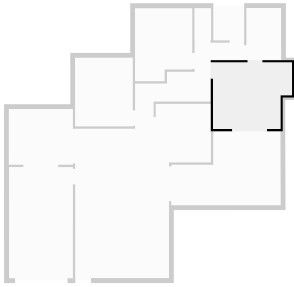
▼ Hall
Ground Floor

WIDTH: 5.68 m • LENGTH: 4.36 m
AREA: 9.19 m² • PERIMETER: 20.07 m



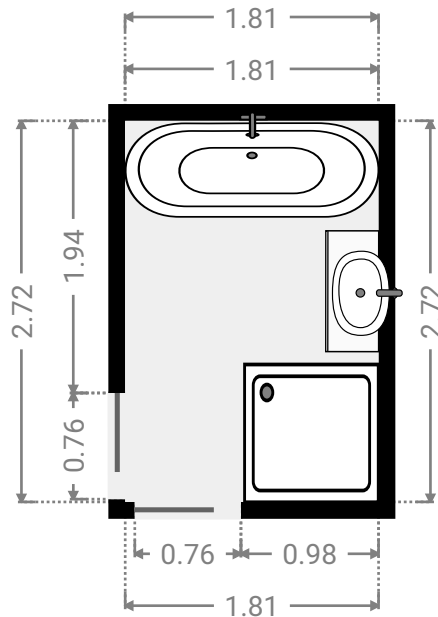
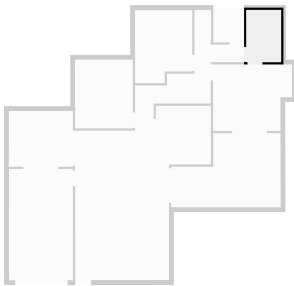
▼ **Master Bedroom**
Ground Floor

WIDTH: 4.11 m • LENGTH: 3.46 m
AREA: 13.16 m² • PERIMETER: 15.14 m



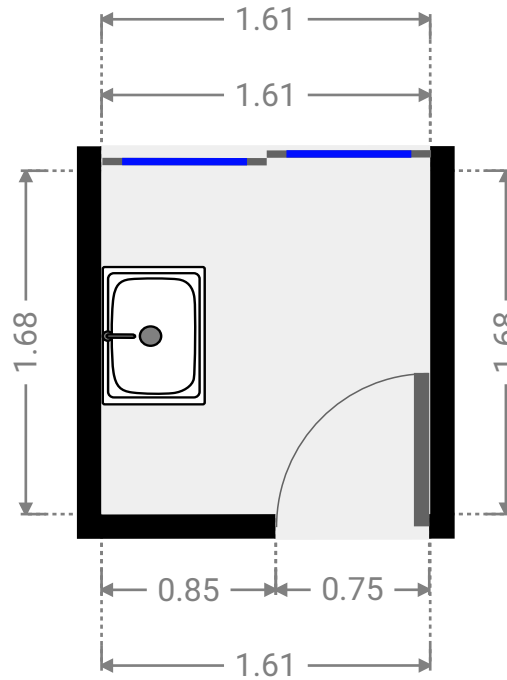
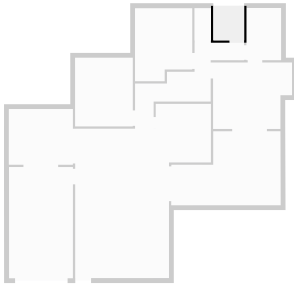
▼ **Bathroom**
Ground Floor

WIDTH: 1.81 m • LENGTH: 2.72 m
AREA: 4.91 m² • PERIMETER: 9.05 m



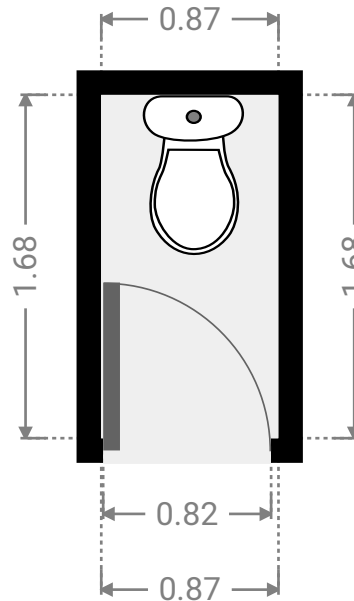
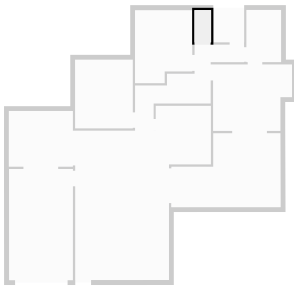
▼ **Laundry Room**
Ground Floor

WIDTH: 1.61 m • LENGTH: 1.68 m
AREA: 2.69 m² • PERIMETER: 6.57 m



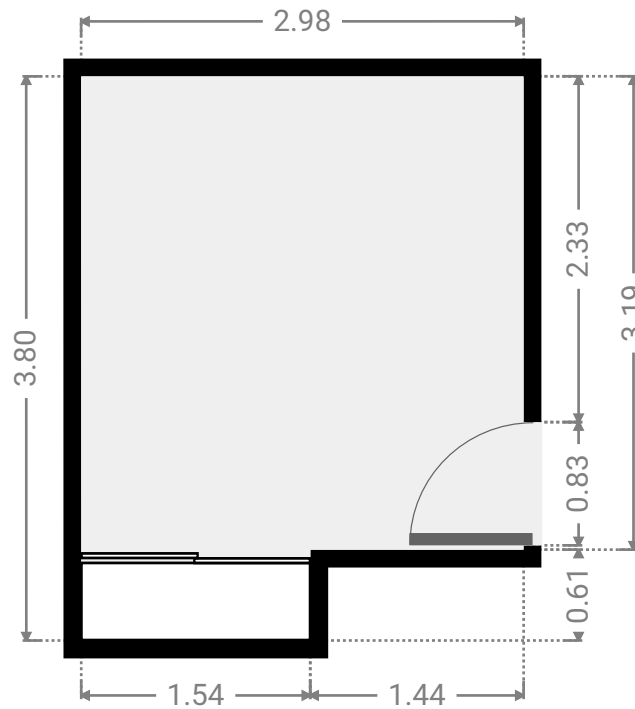
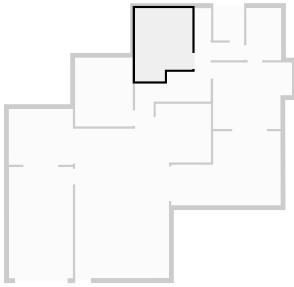
▼ **Toilet**
Ground Floor

WIDTH: 0.87 m • LENGTH: 1.68 m
AREA: 1.45 m² • PERIMETER: 5.09 m



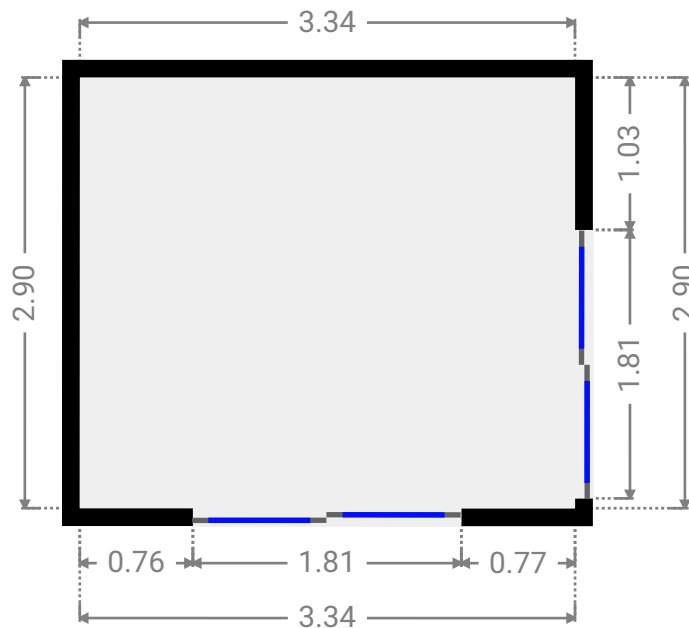
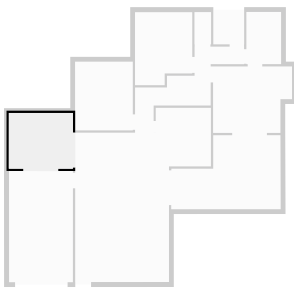
▼ **Bedroom**
Ground Floor

WIDTH: 2.98 m • LENGTH: 3.80 m
AREA: 10.45 m² • PERIMETER: 13.56 m



▼ **Outdoor Area**
Ground Floor

WIDTH: 3.34 m • LENGTH: 2.90 m
AREA: 9.68 m² • PERIMETER: 12.47 m



▼ **Verandah**
Ground Floor

WIDTH: 5.70 m • LENGTH: 3.85 m
AREA: 18.11 m² • PERIMETER: 19.09 m

