

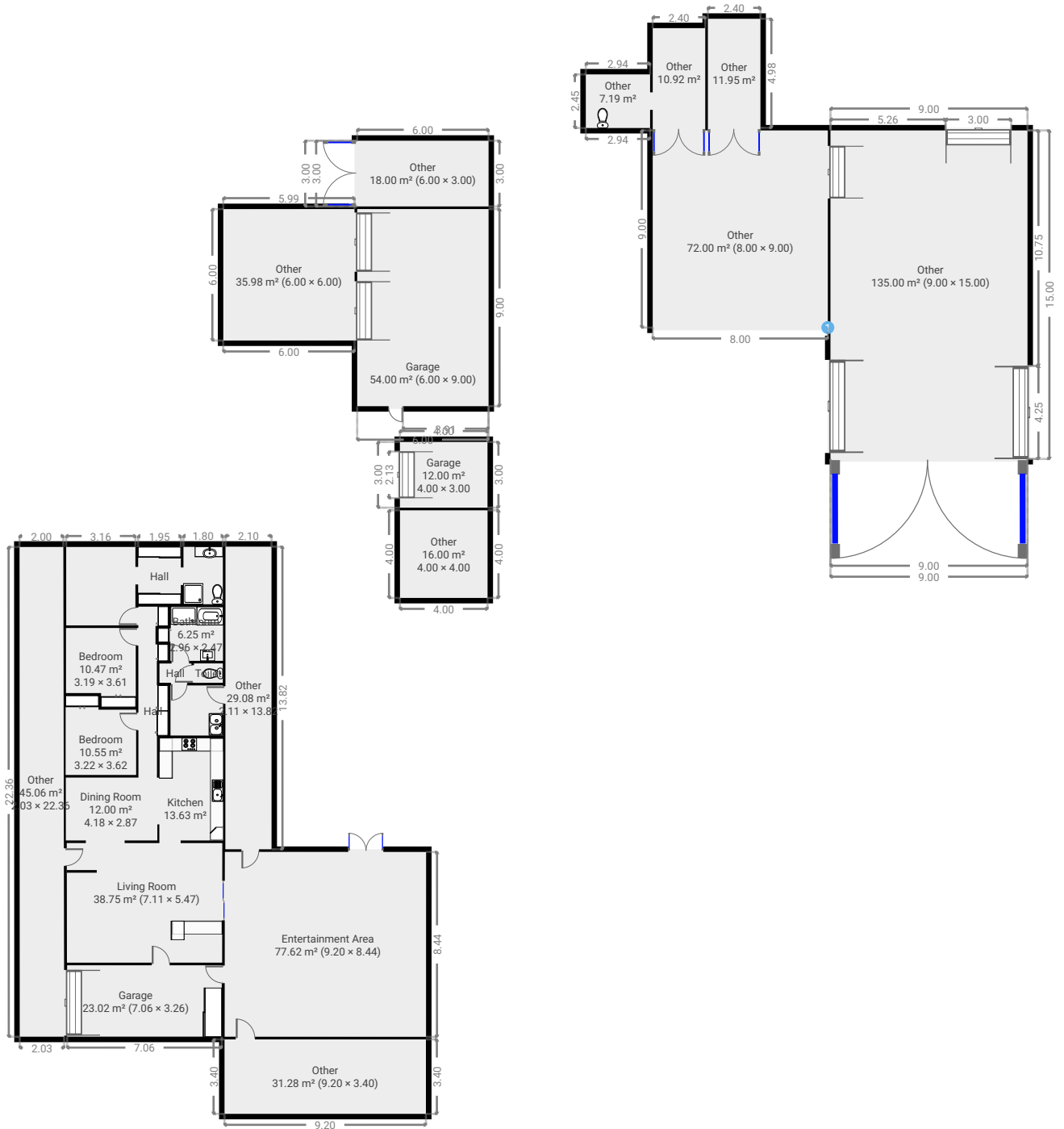
30 Foster Street

SUBMITTED BY
Ray White Rockhampton Casey
stockers@cqoz.com

CREATED ON
2022-02-02

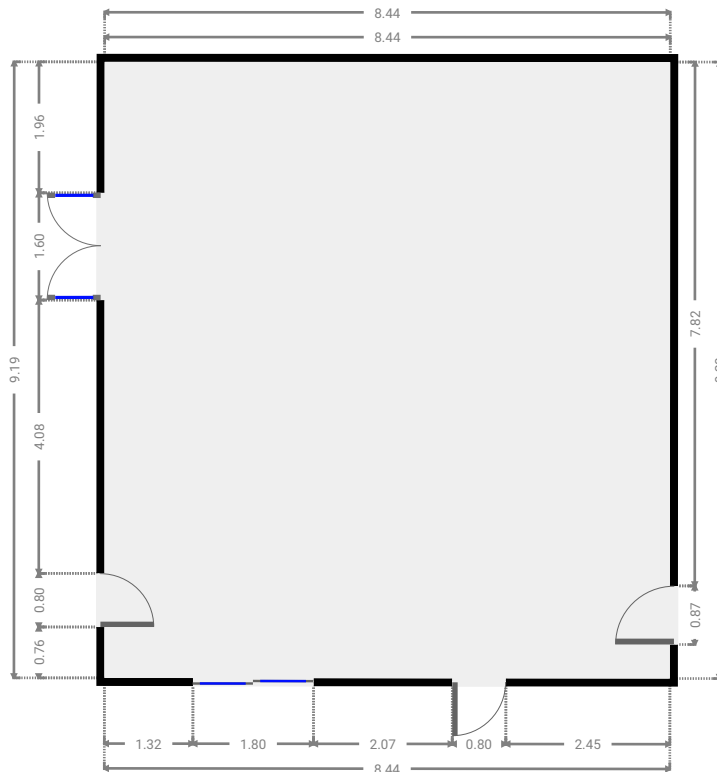
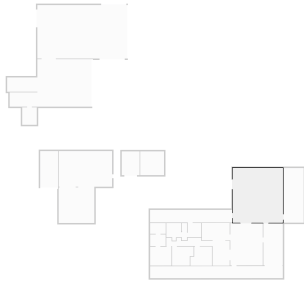
Floors
1

▼ Ground Floor



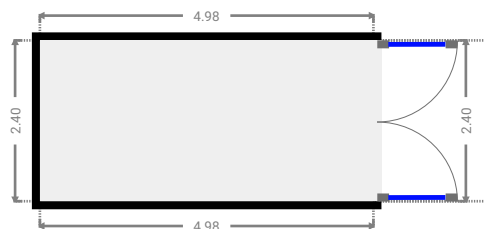
▼ Entertainment Area Ground Floor

WIDTH: 8.44 m • LENGTH: 9.20 m
AREA: 77.62 m² • PERIMETER: 35.27 m



▼ Other Ground Floor

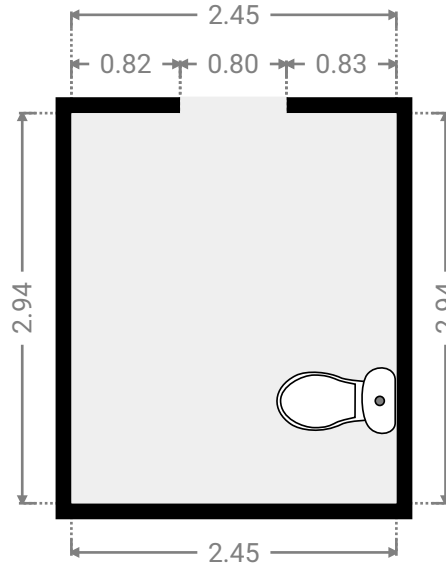
WIDTH: 4.98 m • LENGTH: 2.40 m
AREA: 11.95 m² • PERIMETER: 14.76 m



FLOORS: 1

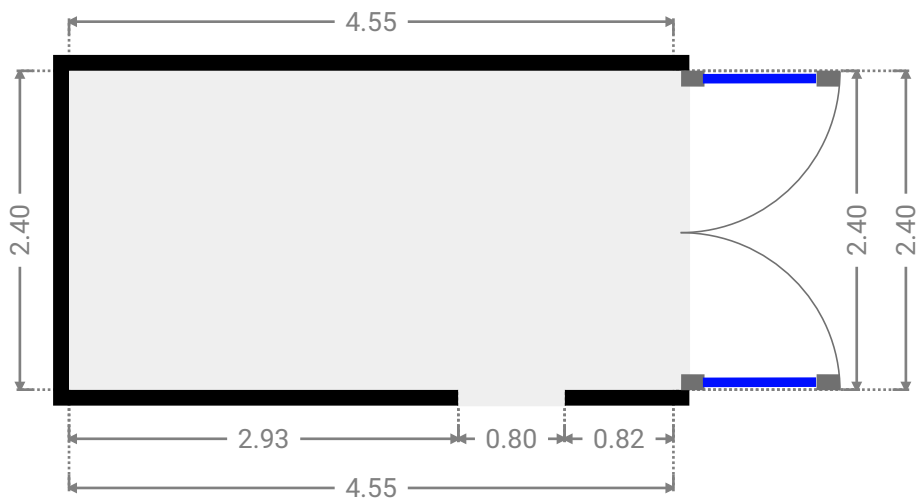
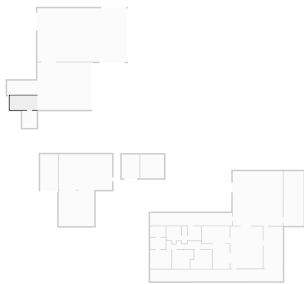
▼ Other
Ground Floor

WIDTH: 2.45 m • LENGTH: 2.94 m
AREA: 7.19 m² • PERIMETER: 10.77 m



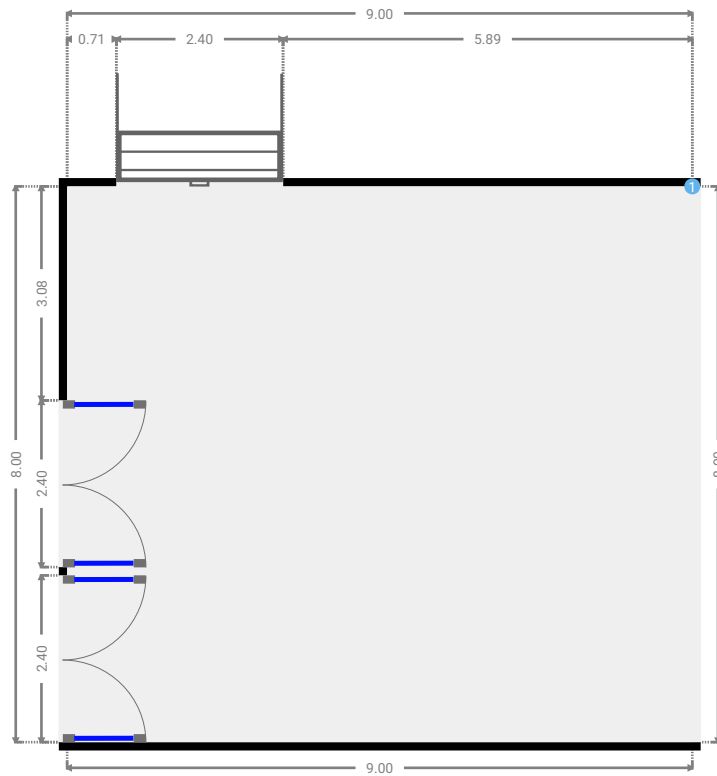
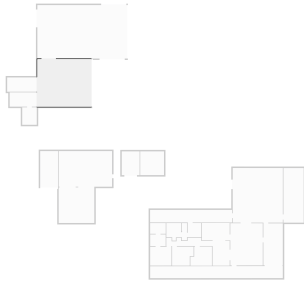
▼ Other
Ground Floor

WIDTH: 4.55 m • LENGTH: 2.40 m
AREA: 10.92 m² • PERIMETER: 13.90 m



▼ Other Ground Floor

WIDTH: 9.00 m • LENGTH: 8.00 m
AREA: 72.00 m² • PERIMETER: 34.00 m



▼ Other/Ground Floor

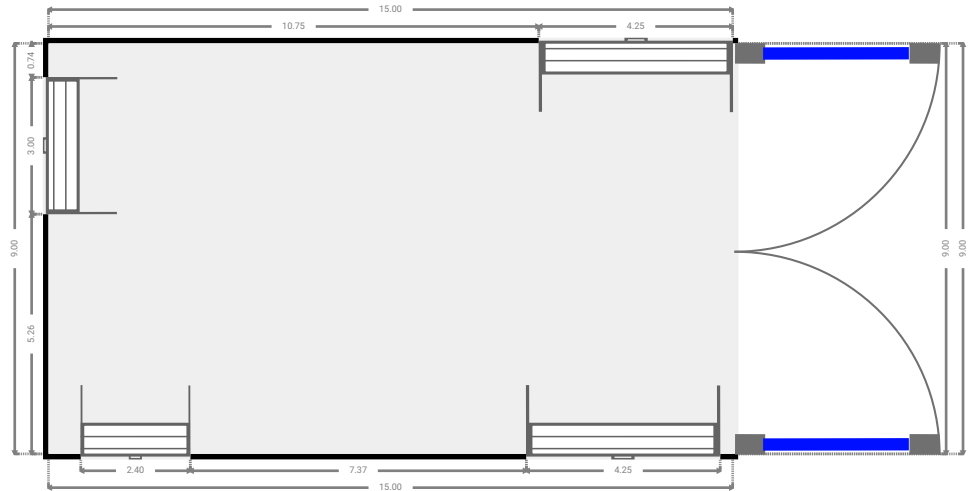
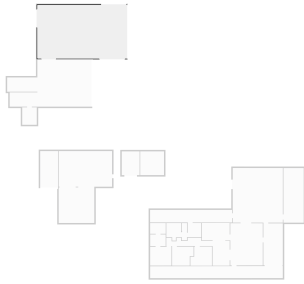
1 OPENING

Height
0.00 m



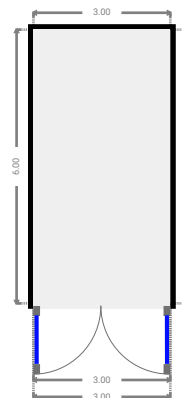
▼ Other Ground Floor

WIDTH: 15.00 m • LENGTH: 9.00 m
AREA: 135.00 m² • PERIMETER: 48.00 m



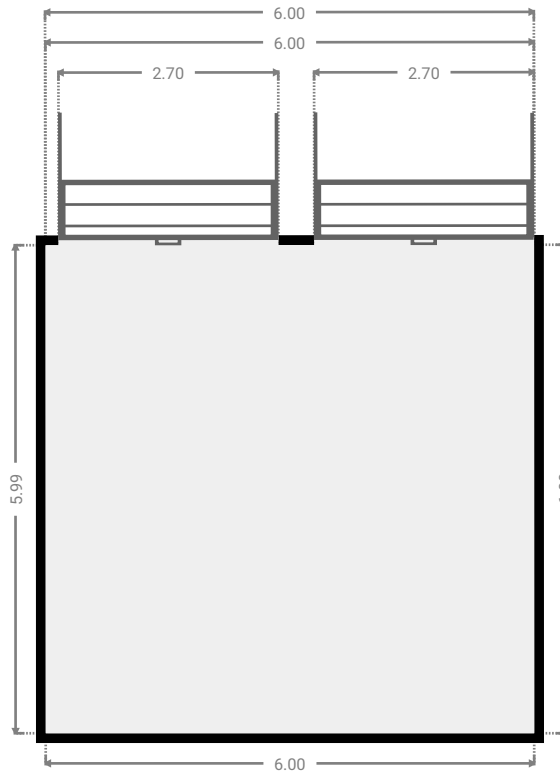
▼ Other Ground Floor

WIDTH: 3.00 m • LENGTH: 6.00 m
AREA: 18.00 m² • PERIMETER: 18.00 m



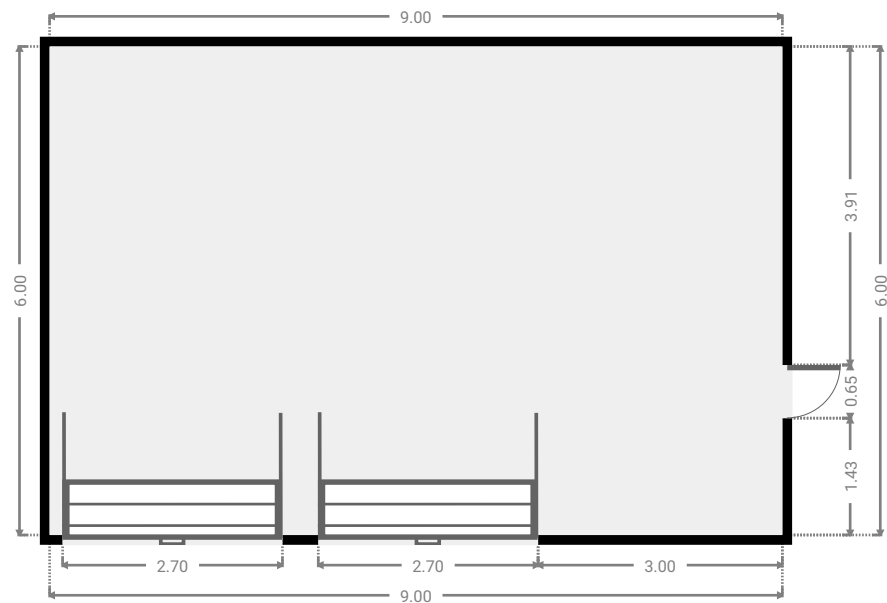
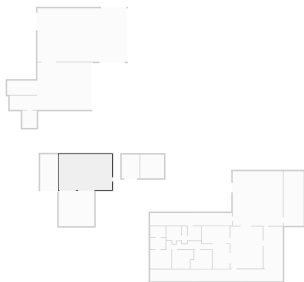
▼ Other Ground Floor

WIDTH: 6.00 m • LENGTH: 6.00 m
AREA: 35.98 m² • PERIMETER: 23.99 m



▼ Garage Ground Floor

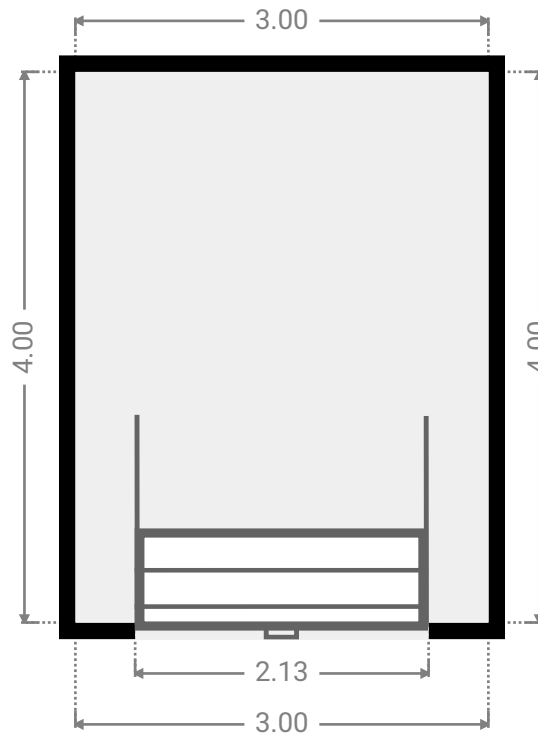
WIDTH: 9.00 m • LENGTH: 6.00 m
AREA: 54.00 m² • PERIMETER: 30.00 m



FLOORS: 1

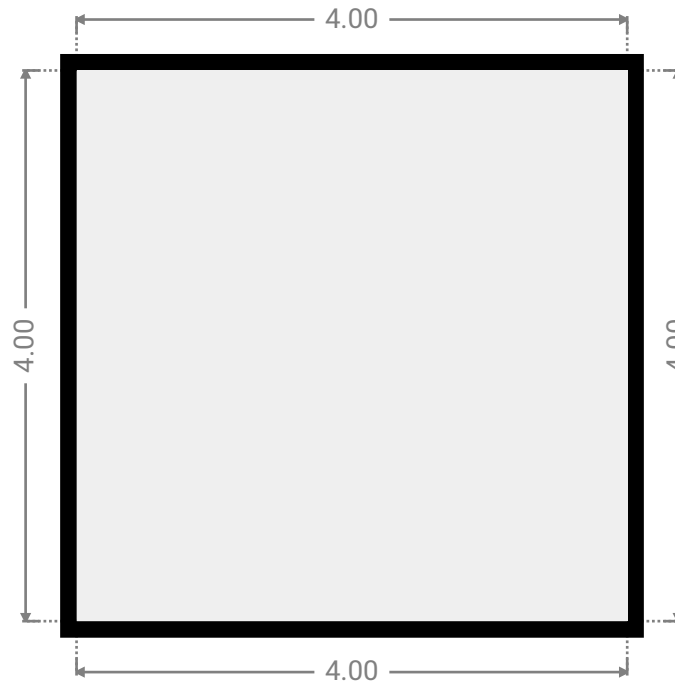
▼ **Garage**
Ground Floor

WIDTH: 3.00 m • LENGTH: 4.00 m
AREA: 12.00 m² • PERIMETER: 14.00 m



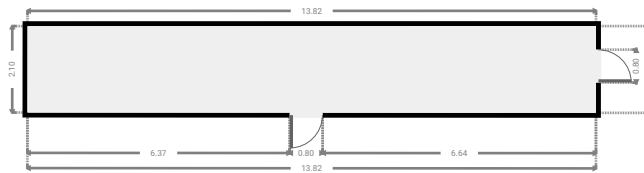
▼ **Other**
Ground Floor

WIDTH: 4.00 m • LENGTH: 4.00 m
AREA: 16.00 m² • PERIMETER: 16.00 m



▼ Other Ground Floor

WIDTH: 13.82 m • LENGTH: 2.11 m
AREA: 29.08 m² • PERIMETER: 31.84 m



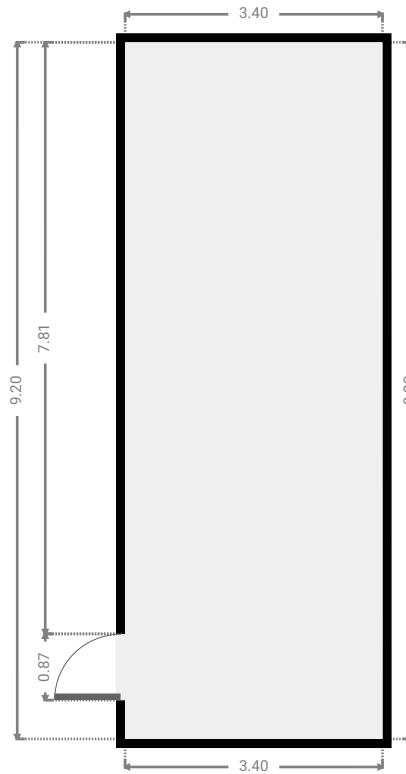
▼ Other Ground Floor

WIDTH: 22.36 m • LENGTH: 2.03 m
AREA: 45.06 m² • PERIMETER: 48.75 m



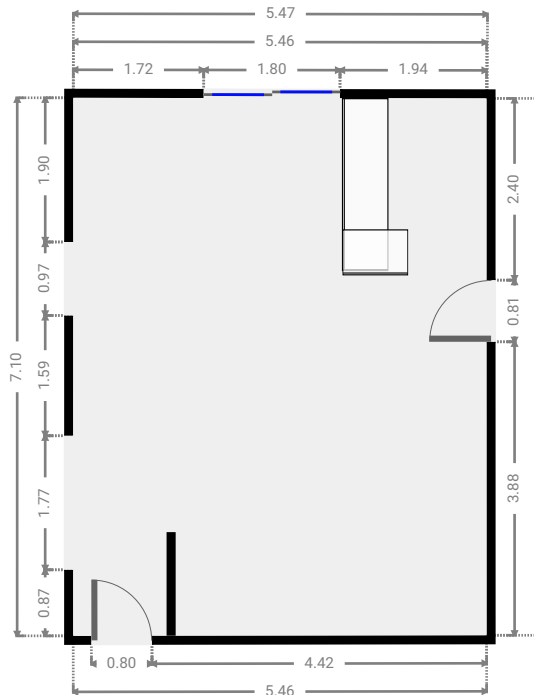
▼ **Other**
Ground Floor

WIDTH: 3.40 m • LENGTH: 9.20 m
AREA: 31.28 m² • PERIMETER: 25.20 m



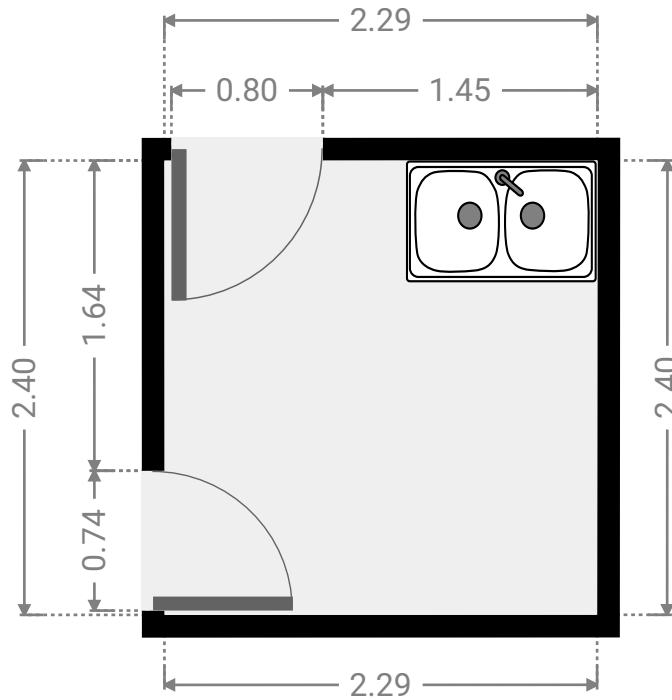
▼ **Living Room**
Ground Floor

WIDTH: 5.47 m • LENGTH: 7.11 m
AREA: 38.75 m² • PERIMETER: 25.11 m



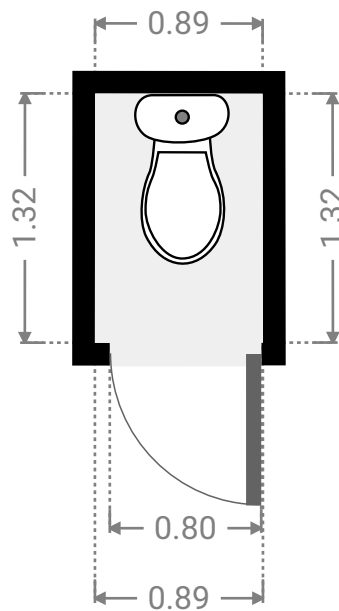
▼ **Laundry Room**
Ground Floor

WIDTH: 2.29 m • LENGTH: 2.40 m
AREA: 5.49 m² • PERIMETER: 9.37 m



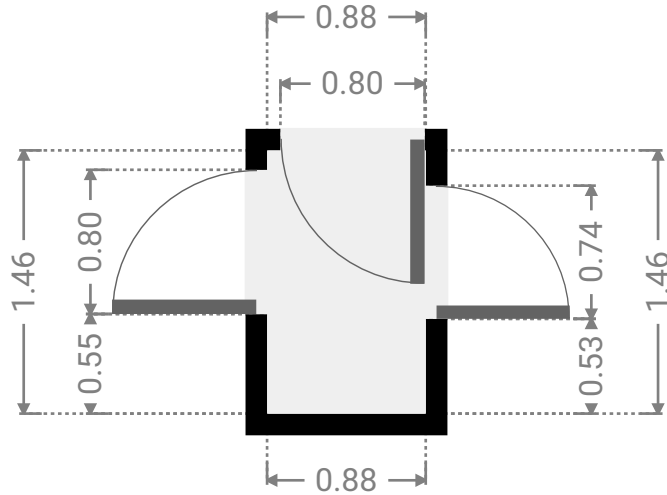
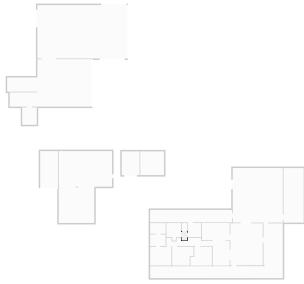
▼ **Toilet**
Ground Floor

WIDTH: 0.89 m • LENGTH: 1.32 m
AREA: 1.17 m² • PERIMETER: 4.41 m



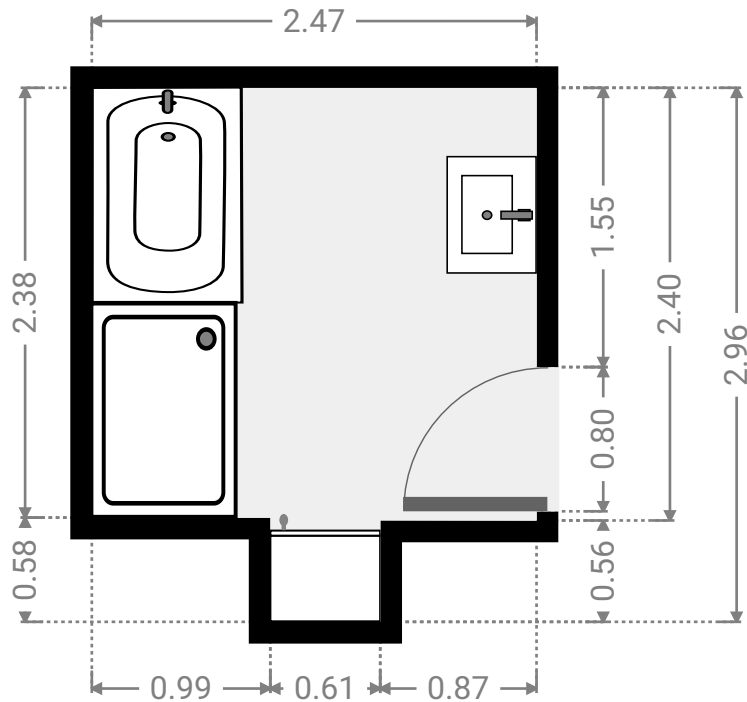
▼ **Hall**
Ground Floor

WIDTH: 0.88 m • LENGTH: 1.46 m
AREA: 1.28 m² • PERIMETER: 4.68 m



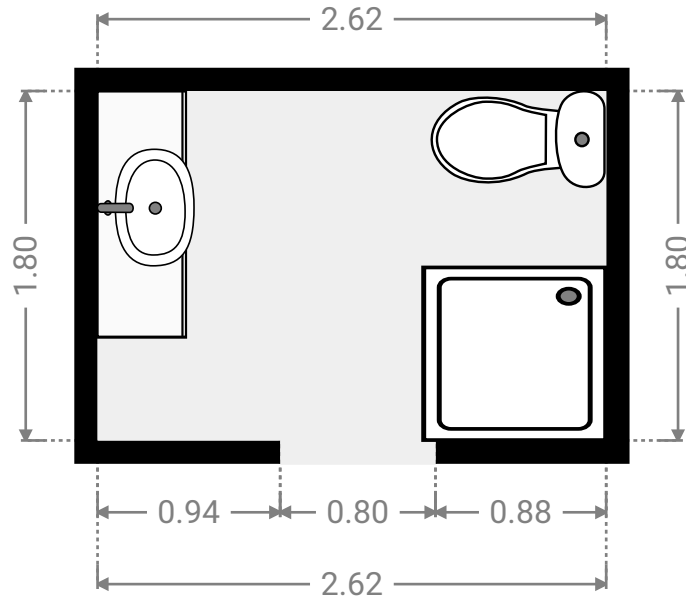
▼ **Bathroom**
Ground Floor

WIDTH: 2.47 m • LENGTH: 2.96 m
AREA: 6.25 m² • PERIMETER: 10.86 m



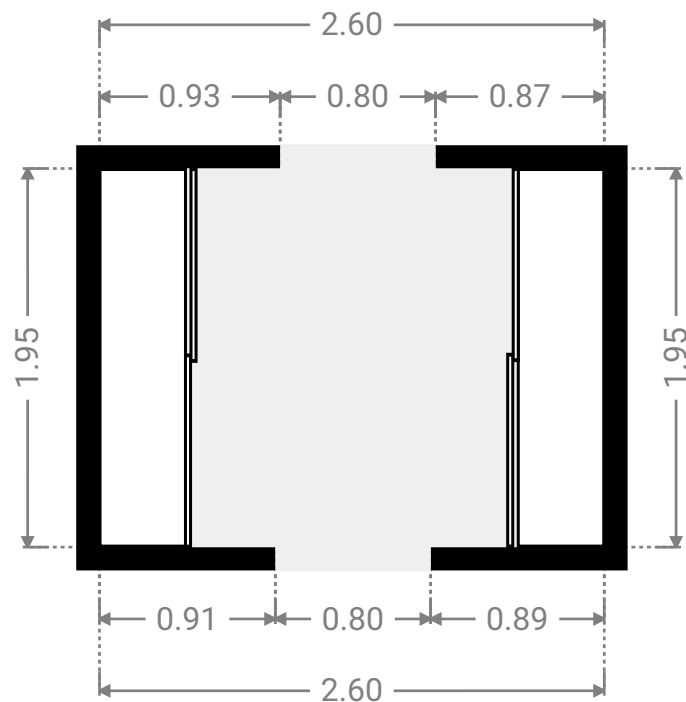
▼ **Bathroom**
Ground Floor

WIDTH: 2.62 m • LENGTH: 1.80 m
AREA: 4.72 m² • PERIMETER: 8.84 m



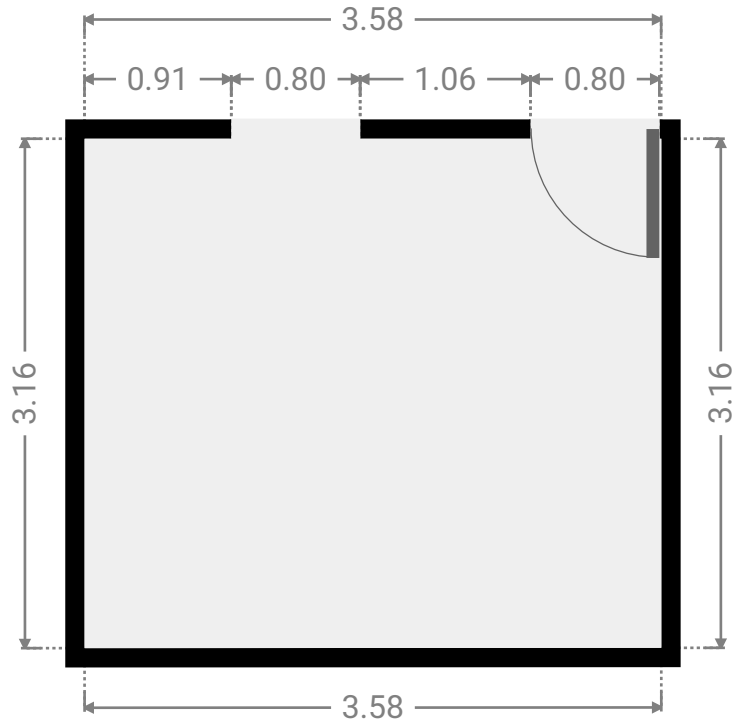
▼ **Hall**
Ground Floor

WIDTH: 2.60 m • LENGTH: 1.95 m
AREA: 5.07 m² • PERIMETER: 9.10 m



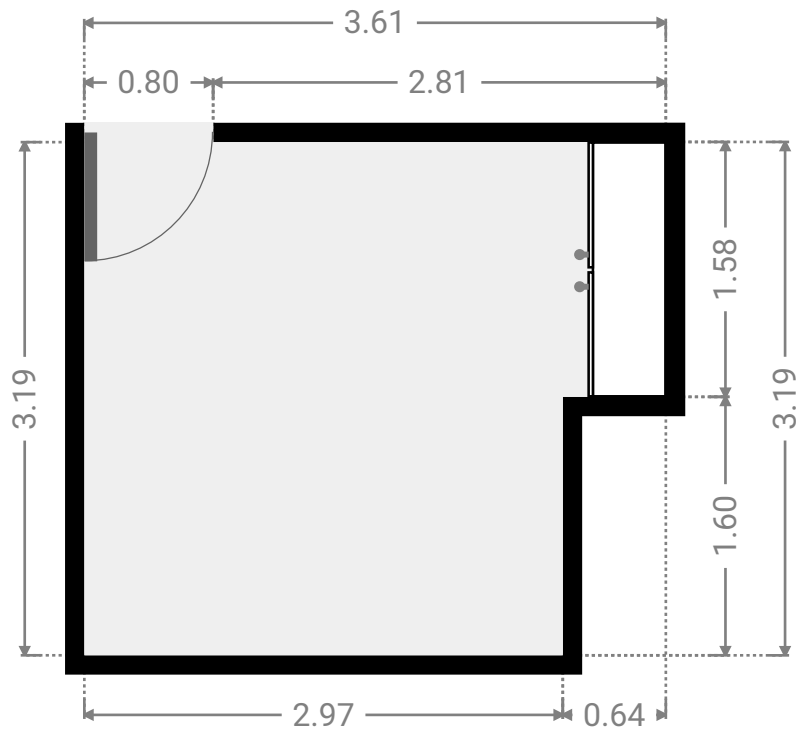
▼ **Master Bedroom**
Ground Floor

WIDTH: 3.58 m • LENGTH: 3.16 m
AREA: 11.32 m² • PERIMETER: 13.48 m



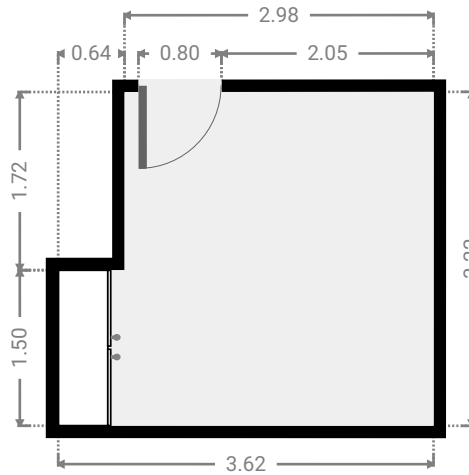
▼ **Bedroom**
Ground Floor

WIDTH: 3.61 m • LENGTH: 3.19 m
AREA: 10.47 m² • PERIMETER: 13.59 m



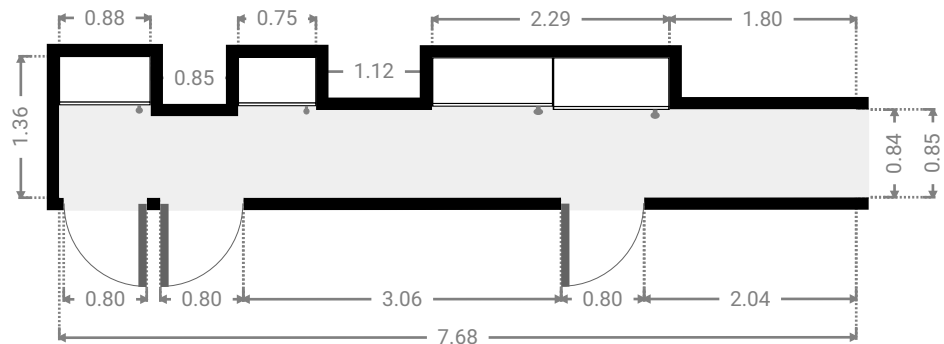
▼ Bedroom Ground Floor

WIDTH: 3.62 m • LENGTH: 3.22 m
AREA: 10.55 m² • PERIMETER: 13.68 m



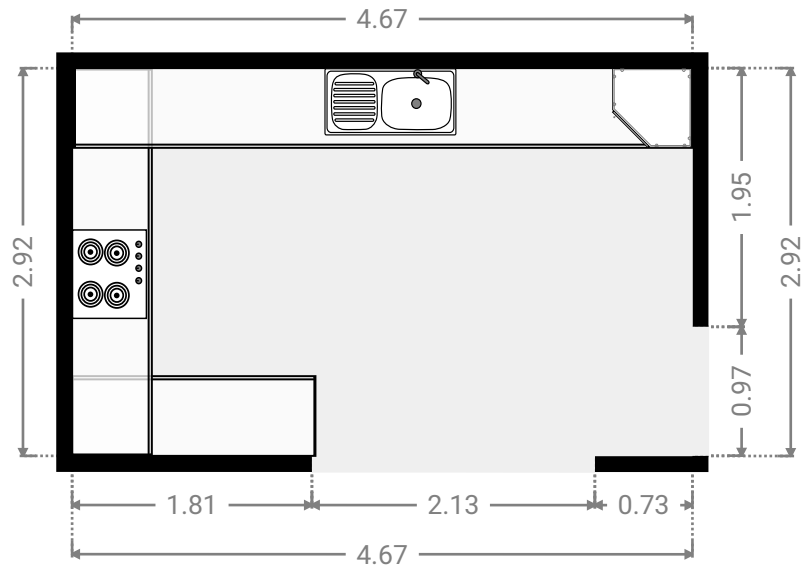
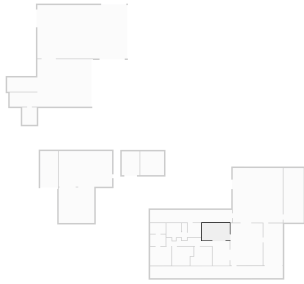
▼ Hall Ground Floor

WIDTH: 7.68 m • LENGTH: 1.36 m
AREA: 8.43 m² • PERIMETER: 20.24 m



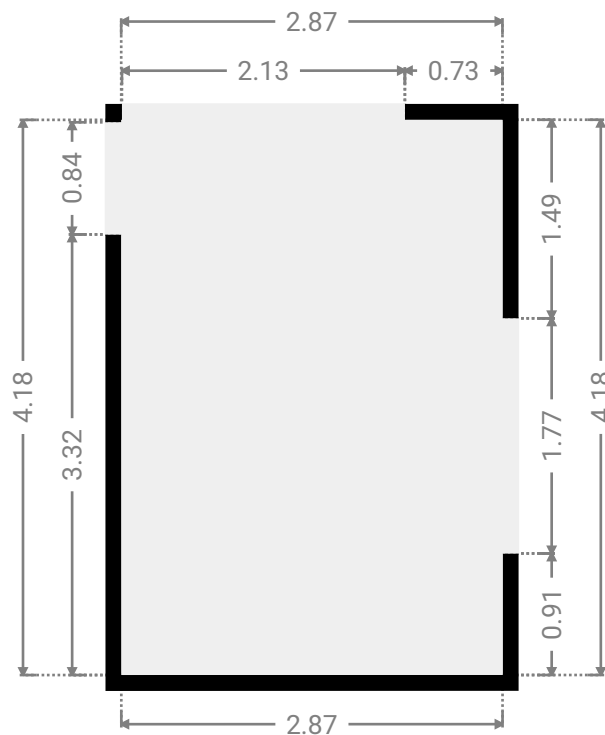
▼ Kitchen Ground Floor

WIDTH: 4.67 m • LENGTH: 2.92 m
AREA: 13.63 m² • PERIMETER: 15.18 m



▼ Dining Room Ground Floor

WIDTH: 2.87 m • LENGTH: 4.18 m
AREA: 12.00 m² • PERIMETER: 14.10 m



▼ Garage Ground Floor

WIDTH: 3.26 m • LENGTH: 7.06 m
AREA: 23.02 m² • PERIMETER: 20.64 m

