

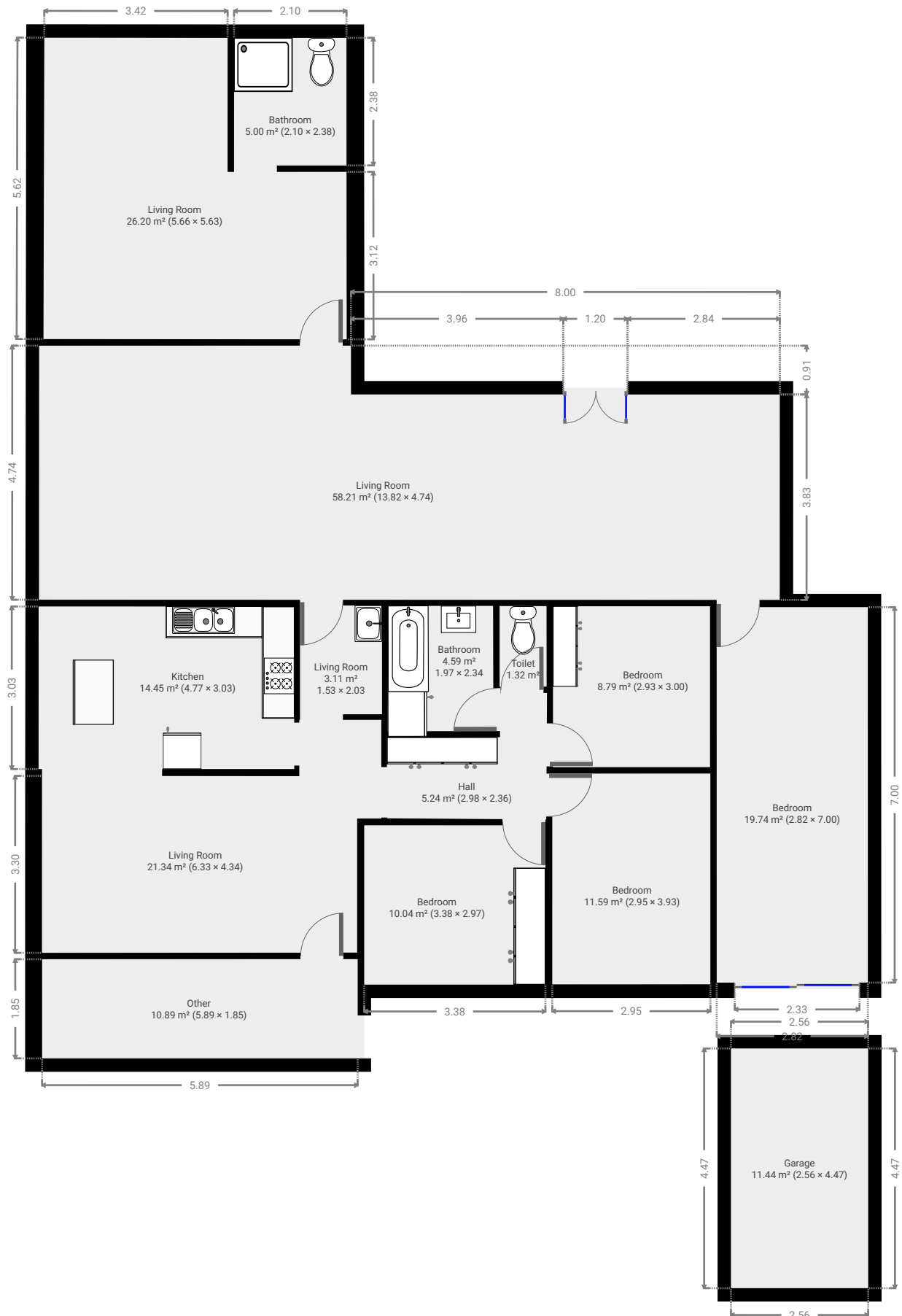
30 Cahill Street

SUBMITTED BY
Ray White Rockhampton Casey
stockers@cqoz.com

CREATED ON
2022-06-20

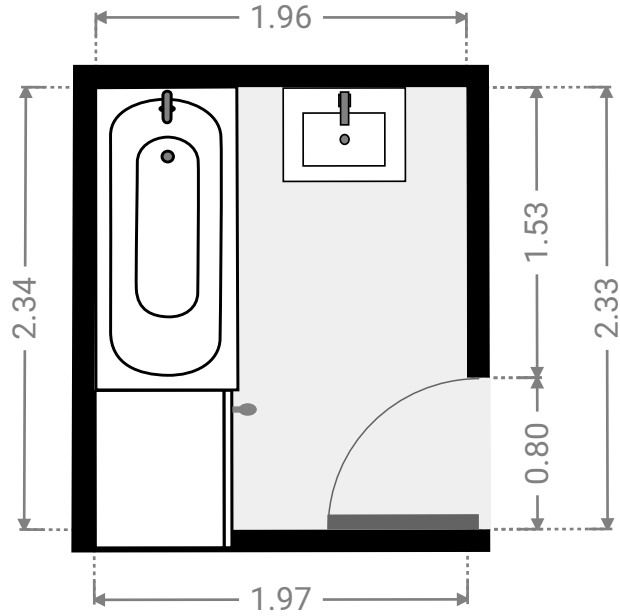
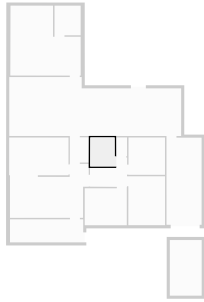
Floors
1

▼ Ground Floor



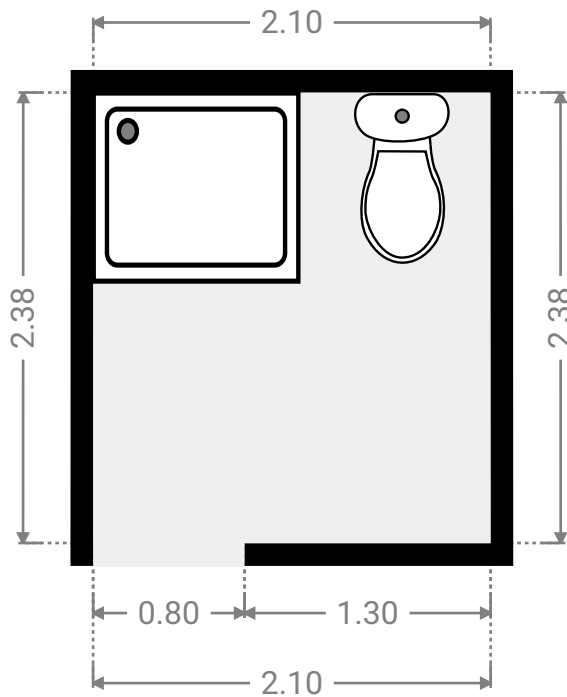
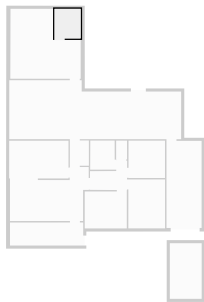
▼ **Bathroom**
Ground Floor

WIDTH: 1.97 m • LENGTH: 2.34 m
AREA: 4.59 m² • PERIMETER: 8.60 m



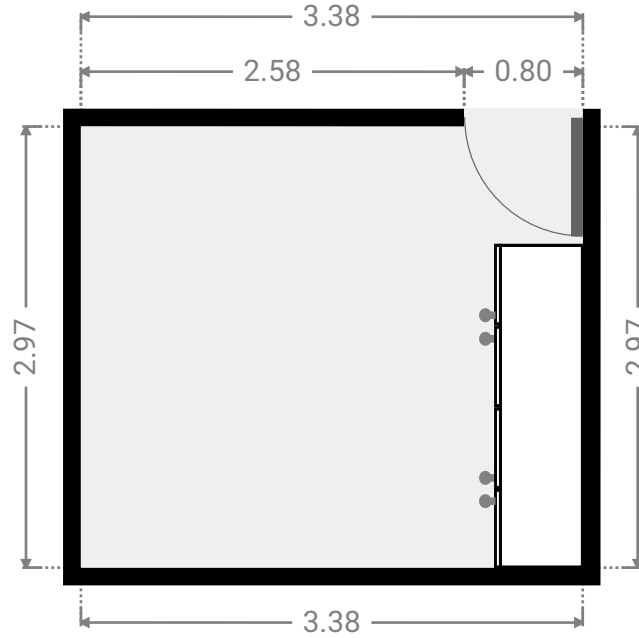
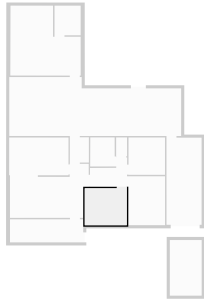
▼ **Bathroom**
Ground Floor

WIDTH: 2.10 m • LENGTH: 2.38 m
AREA: 5.00 m² • PERIMETER: 8.96 m



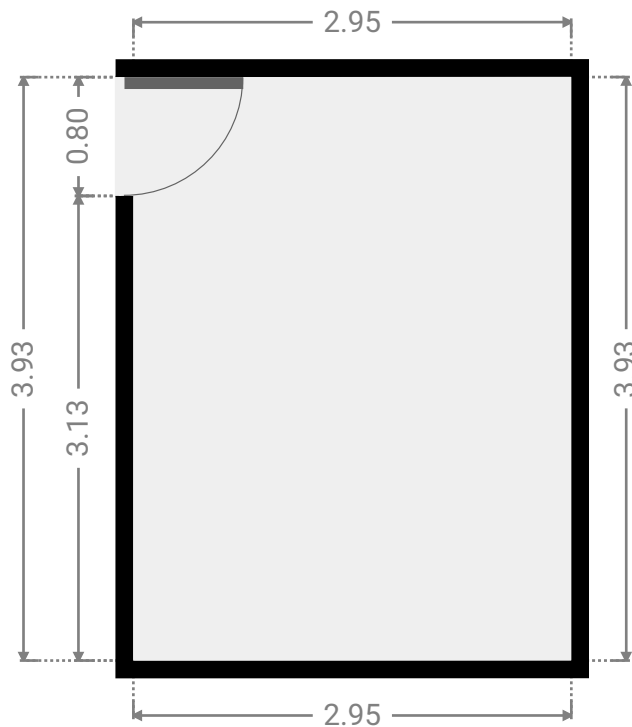
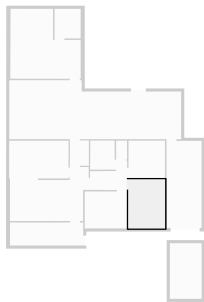
▼ **Bedroom**
Ground Floor

WIDTH: 3.38 m • LENGTH: 2.97 m
AREA: 10.04 m² • PERIMETER: 12.70 m



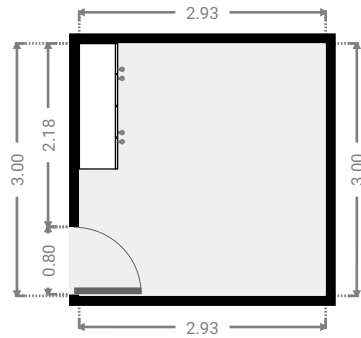
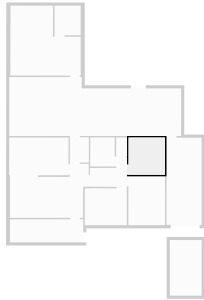
▼ **Bedroom**
Ground Floor

WIDTH: 2.95 m • LENGTH: 3.93 m
AREA: 11.59 m² • PERIMETER: 13.76 m



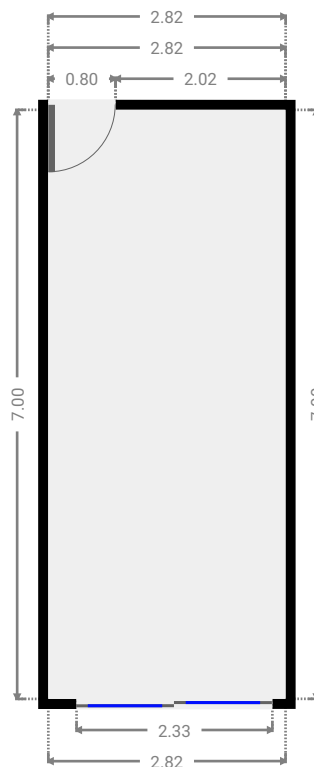
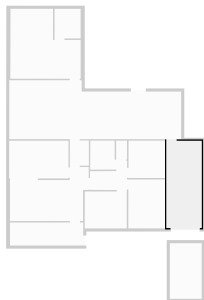
▼ **Bedroom**
Ground Floor

WIDTH: 2.93 m • LENGTH: 3.00 m
AREA: 8.79 m² • PERIMETER: 11.86 m



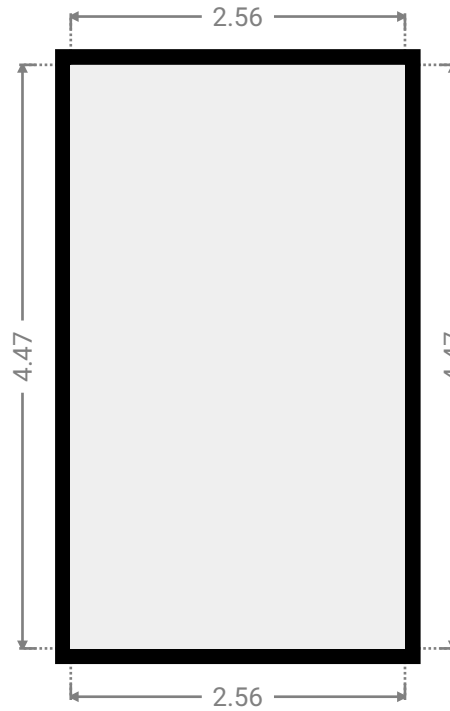
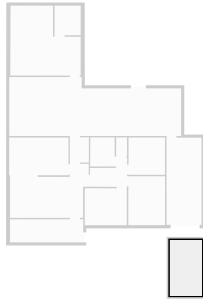
▼ **Bedroom**
Ground Floor

WIDTH: 2.82 m • LENGTH: 7.00 m
AREA: 19.74 m² • PERIMETER: 19.64 m



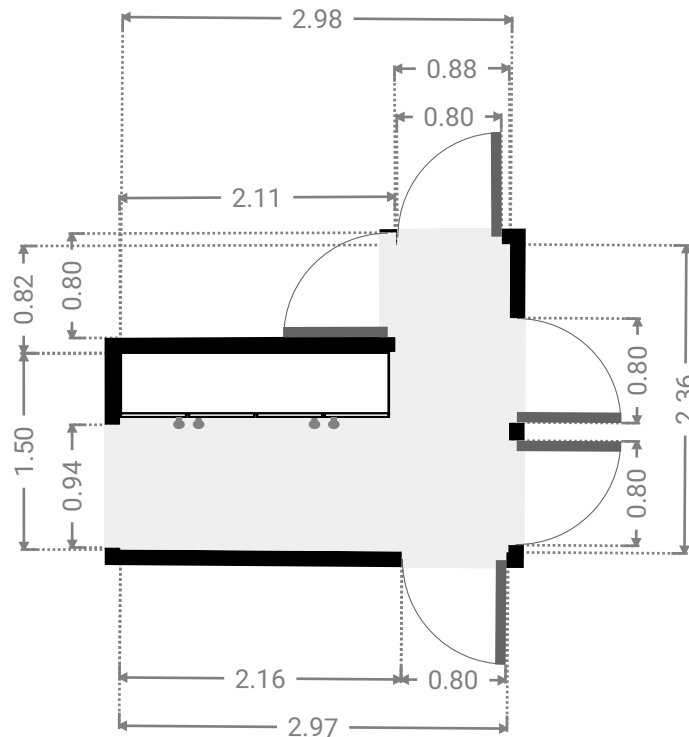
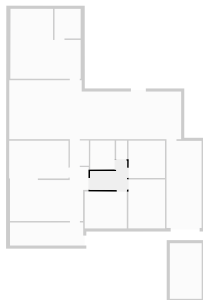
▼ **Garage**
Ground Floor

WIDTH: 2.56 m • LENGTH: 4.47 m
AREA: 11.44 m² • PERIMETER: 14.06 m



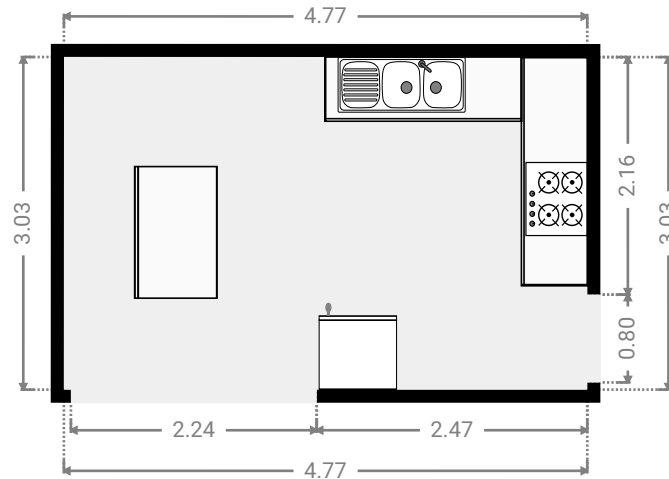
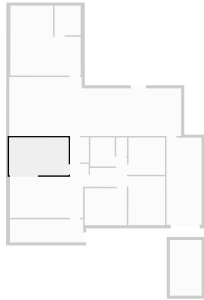
▼ **Hall**
Ground Floor

WIDTH: 2.98 m • LENGTH: 2.36 m
AREA: 5.24 m² • PERIMETER: 10.64 m



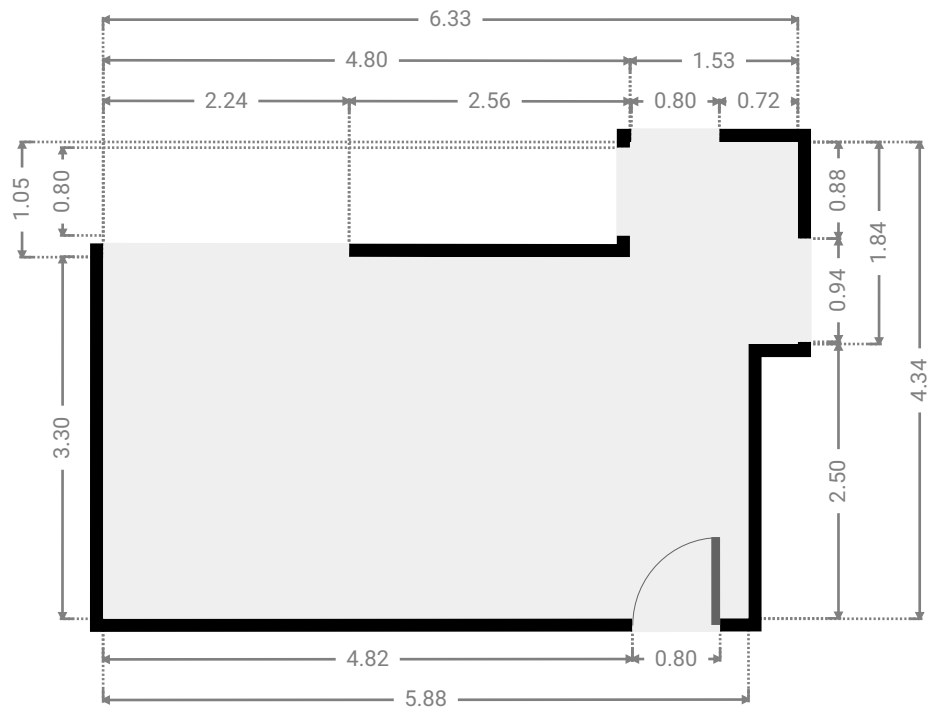
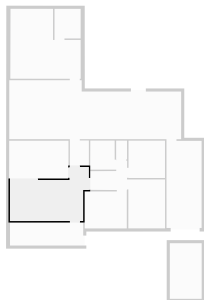
▼ Kitchen
Ground Floor

WIDTH: 4.77 m • LENGTH: 3.03 m
AREA: 14.45 m² • PERIMETER: 15.60 m



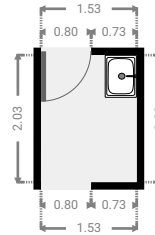
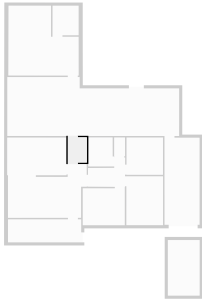
▼ Living Room
Ground Floor

WIDTH: 6.33 m • LENGTH: 4.34 m
AREA: 21.34 m² • PERIMETER: 21.35 m



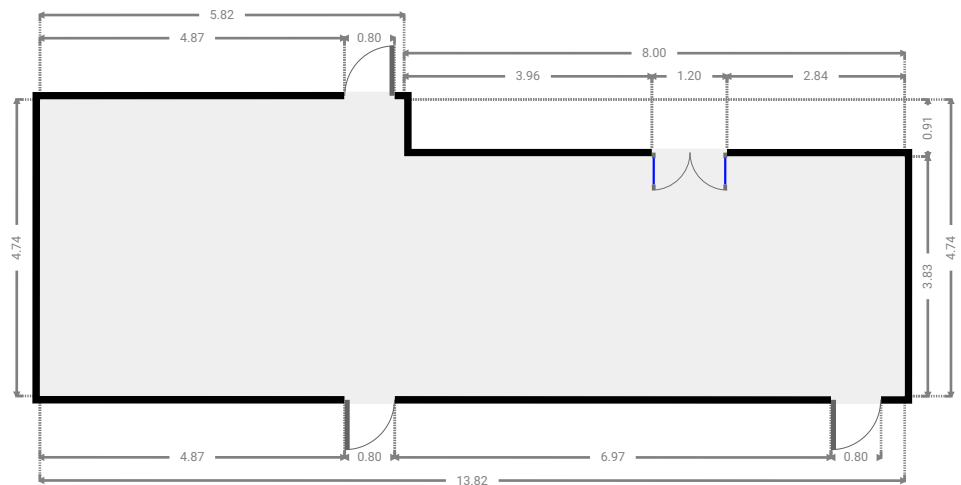
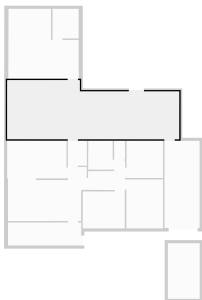
▼ **Living Room**
Ground Floor

WIDTH: 1.53 m • LENGTH: 2.03 m
AREA: 3.11 m² • PERIMETER: 7.12 m



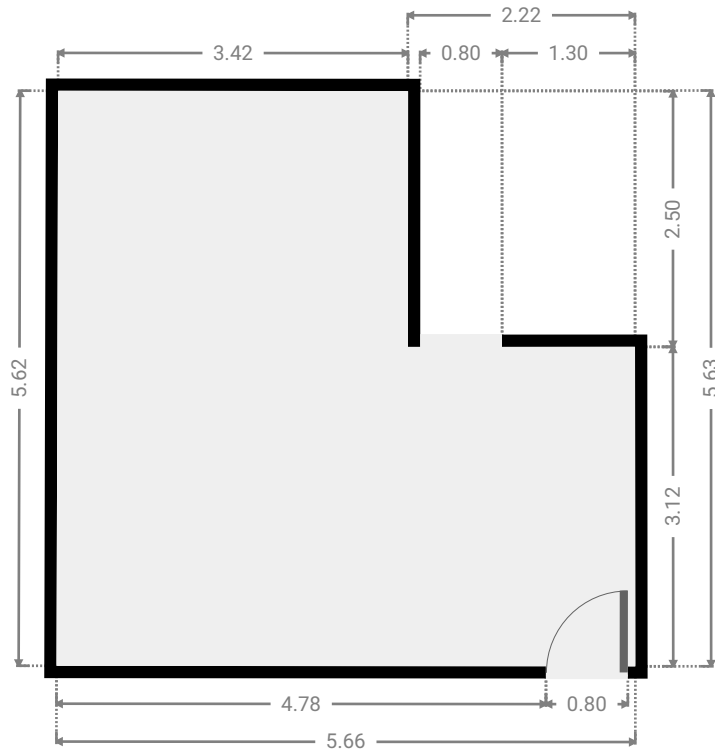
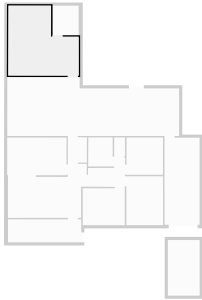
▼ **Living Room**
Ground Floor

WIDTH: 13.82 m • LENGTH: 4.74 m
AREA: 58.21 m² • PERIMETER: 37.12 m



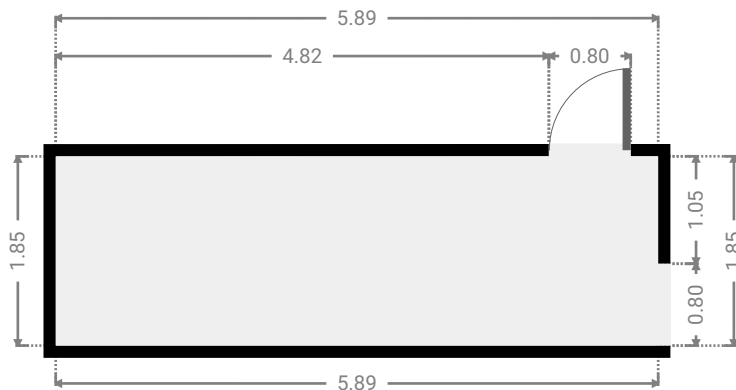
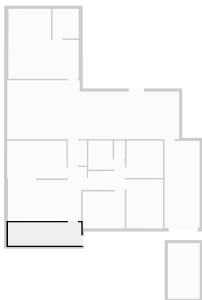
▼ Living Room
Ground Floor

WIDTH: 5.66 m • LENGTH: 5.63 m
AREA: 26.20 m² • PERIMETER: 22.54 m



▼ Other
Ground Floor

WIDTH: 5.89 m • LENGTH: 1.85 m
AREA: 10.89 m² • PERIMETER: 15.48 m



▼ Toilet
Ground Floor

WIDTH: 0.88 m • LENGTH: 1.50 m
AREA: 1.32 m² • PERIMETER: 4.76 m

