

3 Meadowvale Court , Norman Gardens

SUBMITTED BY

Ray White Rockhampton Casey
stockers@cqoz.com

CREATED ON

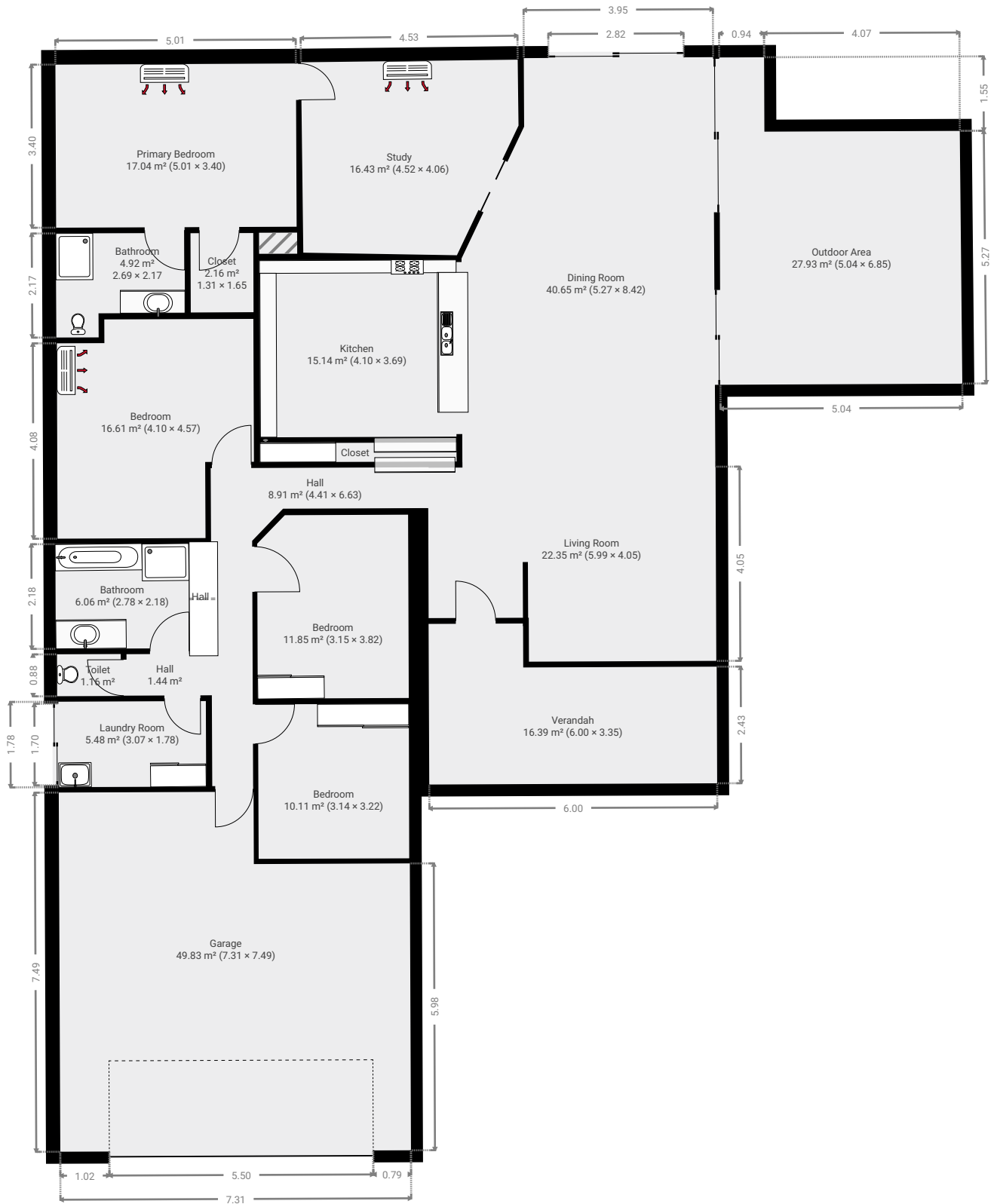
2016-11-09

Floors

1

FLOORS: 1

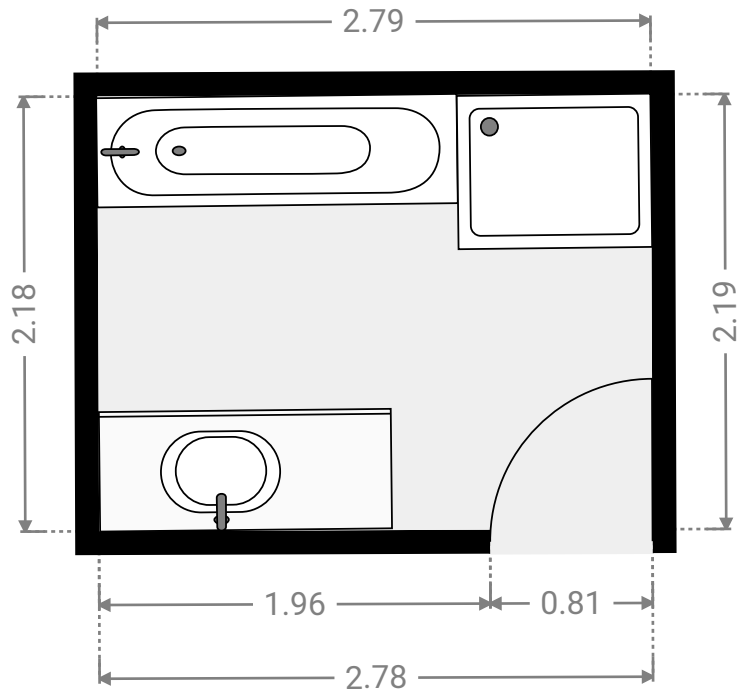
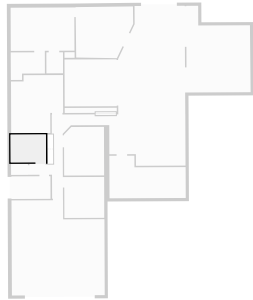
▼ Ground Floor



FLOORS: 1

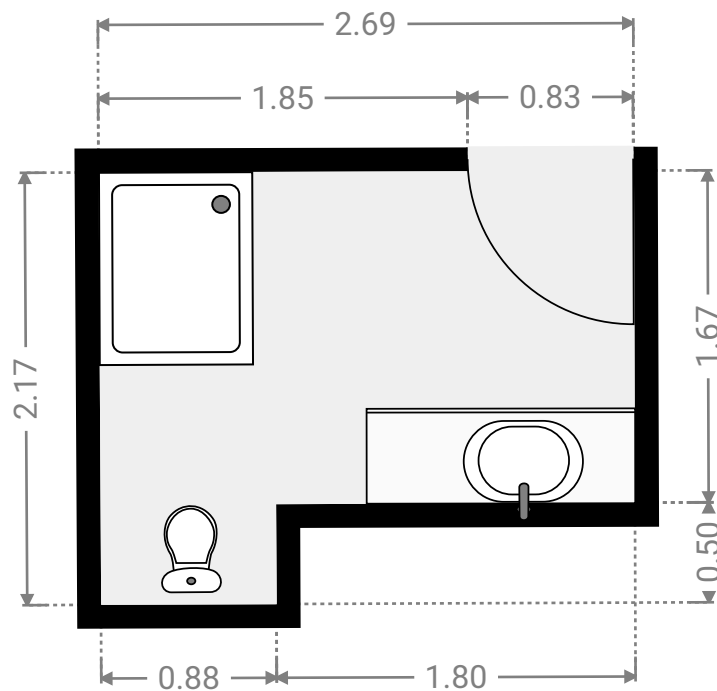
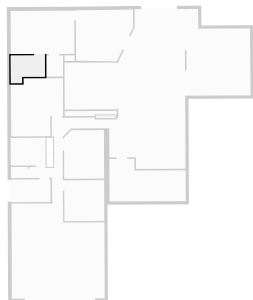
▼ Bathroom Ground Floor

WIDTH: 2.78 m • LENGTH: 2.18 m
AREA: 6.06 m² • PERIMETER: 9.92 m



▼ Bathroom Ground Floor

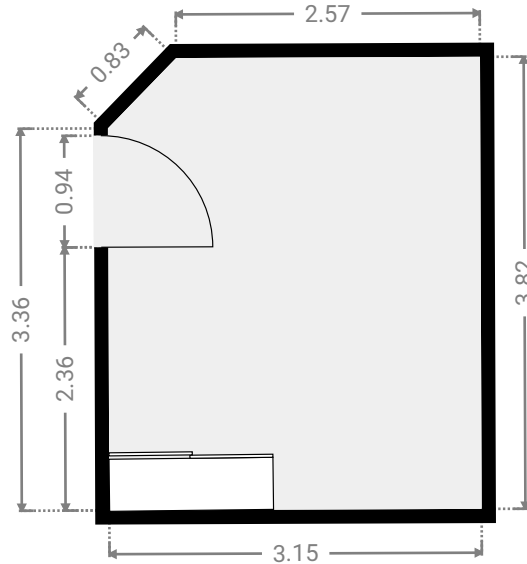
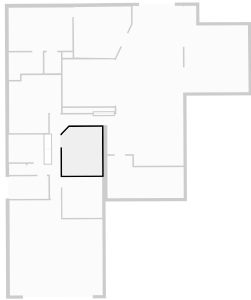
WIDTH: 2.69 m • LENGTH: 2.17 m • CEILING HEIGHT: 2.17 m
AREA: 4.92 m² • PERIMETER: 9.71 m



FLOORS: 1

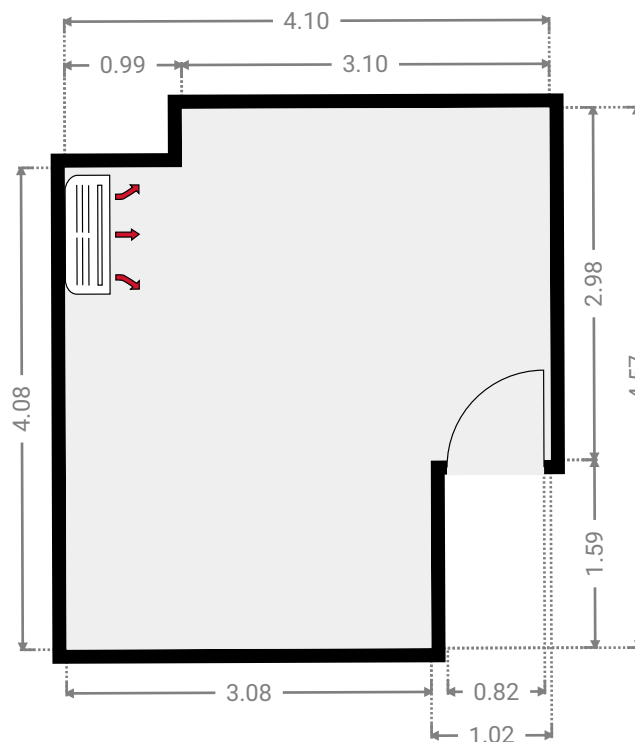
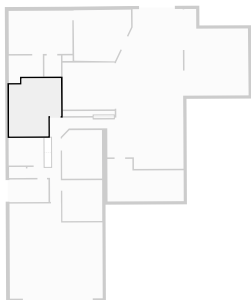
▼ **Bedroom**
Ground Floor

WIDTH: 3.15 m • LENGTH: 3.82 m • CEILING HEIGHT: 2.17 m
AREA: 11.85 m² • PERIMETER: 13.59 m



▼ **Bedroom**
Ground Floor

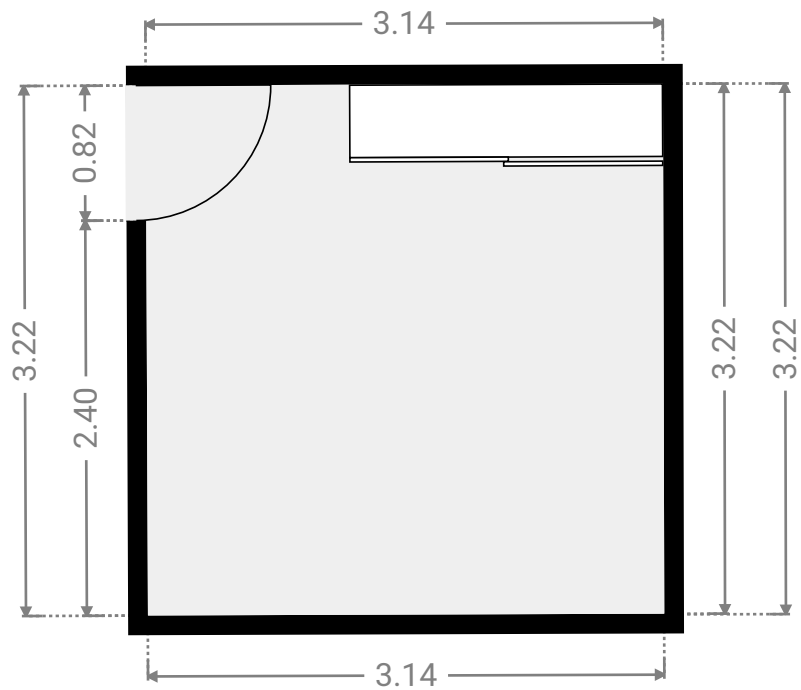
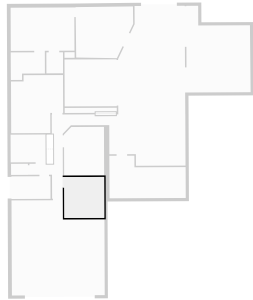
WIDTH: 4.10 m • LENGTH: 4.57 m • CEILING HEIGHT: 2.17 m
AREA: 16.61 m² • PERIMETER: 17.33 m



FLOORS: 1

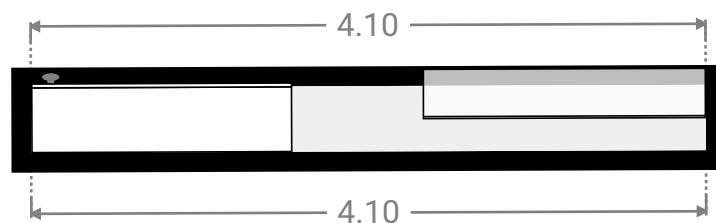
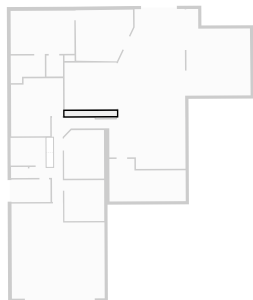
▼ Bedroom Ground Floor

WIDTH: 3.14 m • LENGTH: 3.22 m
AREA: 10.11 m² • PERIMETER: 12.72 m



▼ Closet Ground Floor

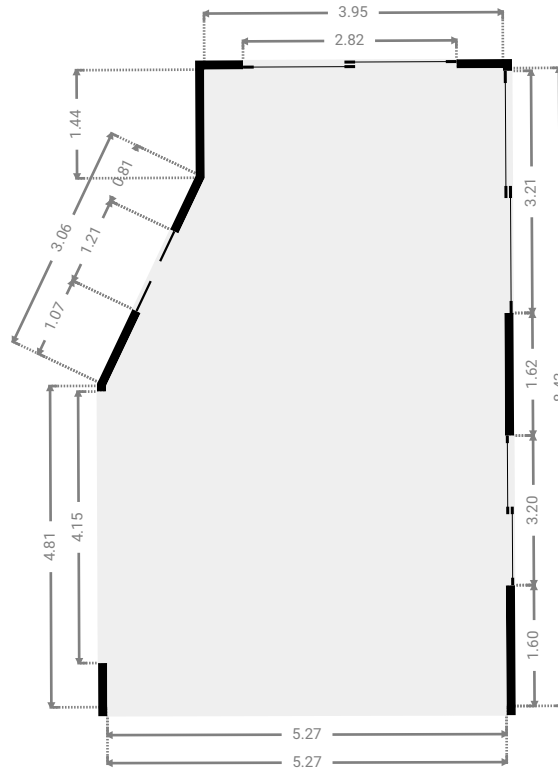
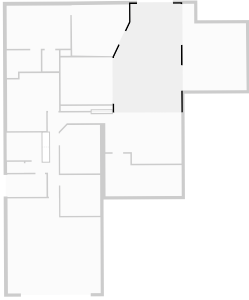
WIDTH: 4.10 m • LENGTH: 0.40 m
AREA: 1.64 m² • PERIMETER: 9.00 m



FLOORS: 1

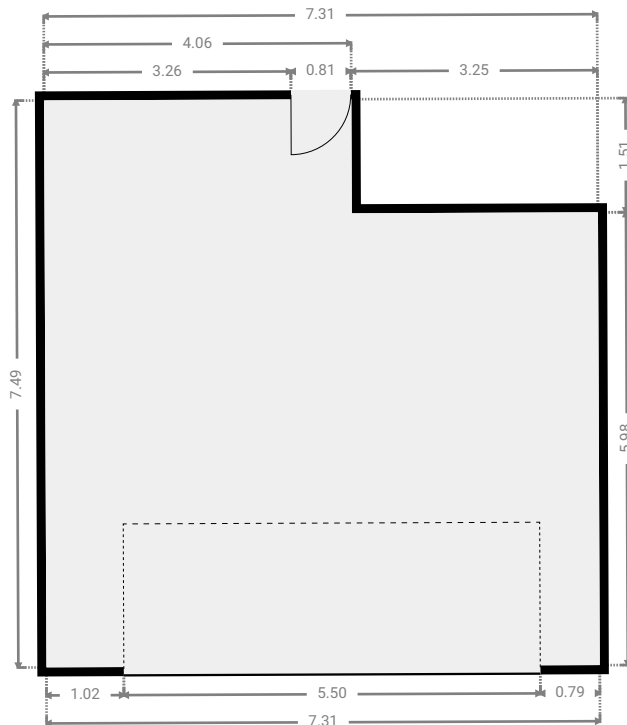
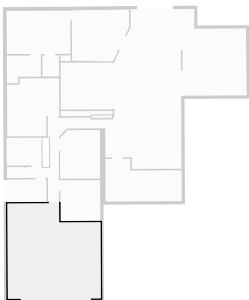
▼ Dining Room
Ground Floor

WIDTH: 5.27 m • LENGTH: 8.42 m • CEILING HEIGHT: 2.17 m
AREA: 40.65 m² • PERIMETER: 26.35 m



▼ Garage
Ground Floor

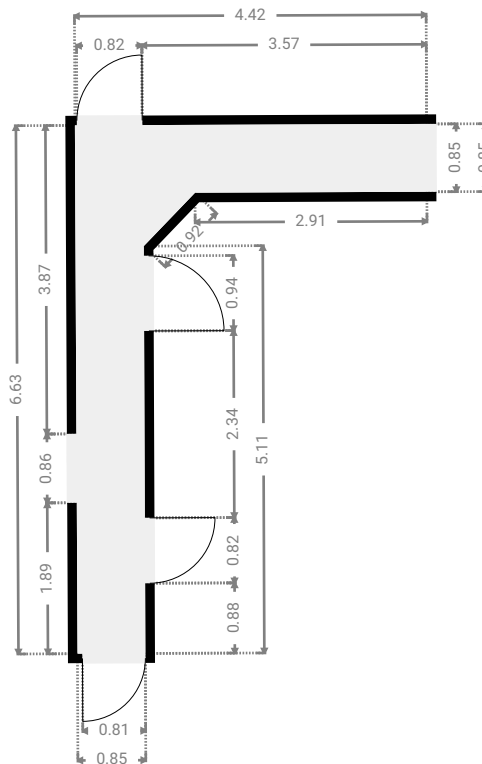
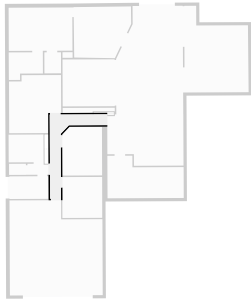
WIDTH: 7.31 m • LENGTH: 7.49 m • CEILING HEIGHT: 2.17 m
AREA: 49.83 m² • PERIMETER: 29.59 m



FLOORS: 1

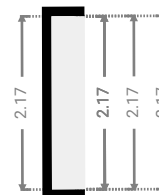
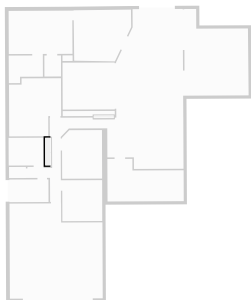
▼ **Hall**
Ground Floor

WIDTH: 4.41 m • LENGTH: 6.63 m • CEILING HEIGHT: 2.17 m
AREA: 8.91 m² • PERIMETER: 21.69 m



▼ **Hall**
Ground Floor

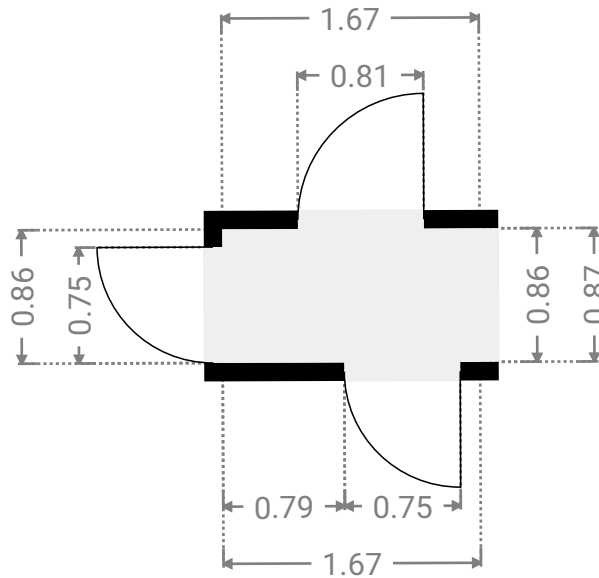
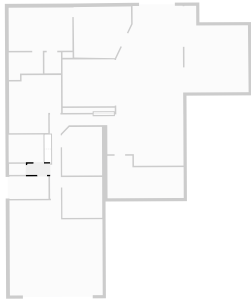
WIDTH: 0.29 m • LENGTH: 2.17 m
AREA: 0.64 m² • PERIMETER: 4.93 m



FLOORS: 1

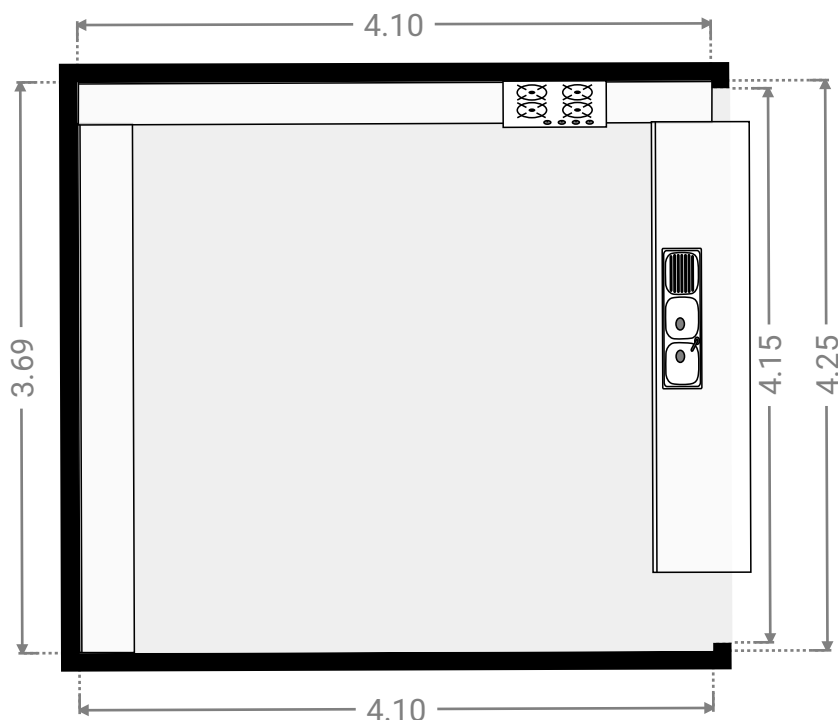
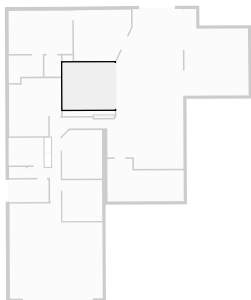
▼ **Hall**
Ground Floor

WIDTH: 1.67 m • LENGTH: 0.86 m
AREA: 1.44 m² • PERIMETER: 5.06 m



▼ **Kitchen**
Ground Floor

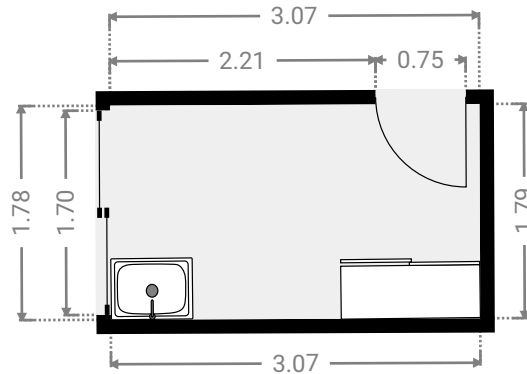
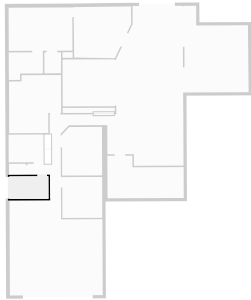
WIDTH: 4.10 m • LENGTH: 3.69 m
AREA: 15.14 m² • PERIMETER: 15.58 m



FLOORS: 1

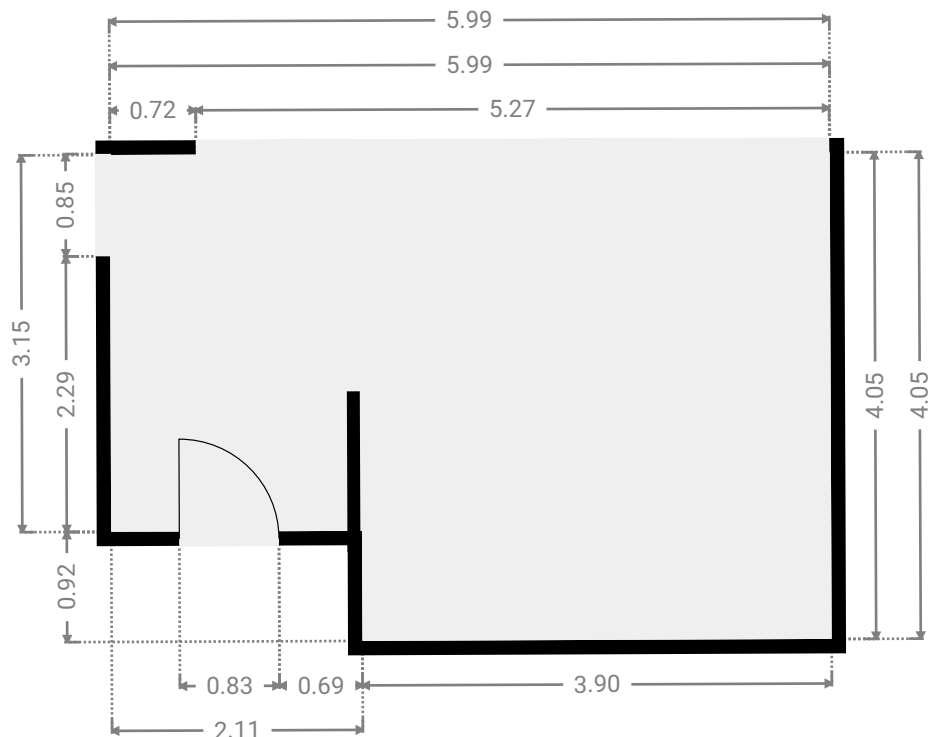
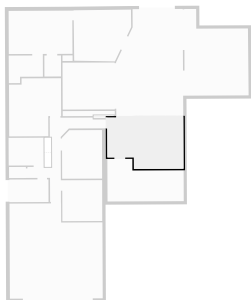
▼ Laundry Room Ground Floor

WIDTH: 3.07 m • LENGTH: 1.78 m
AREA: 5.48 m² • PERIMETER: 9.71 m



▼ Living Room Ground Floor

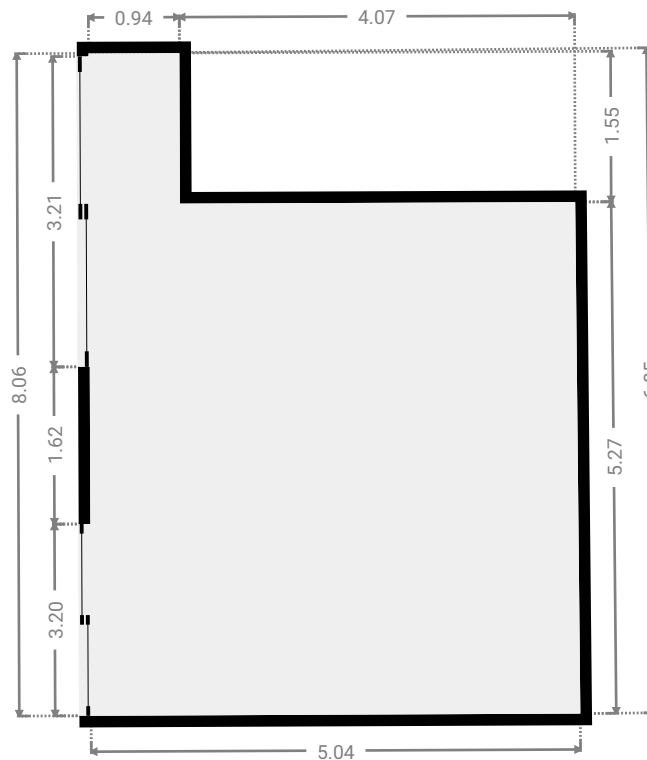
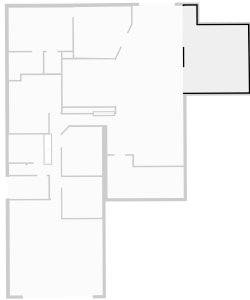
WIDTH: 5.99 m • LENGTH: 4.05 m • CEILING HEIGHT: 2.17 m
AREA: 22.35 m² • PERIMETER: 20.08 m



FLOORS: 1

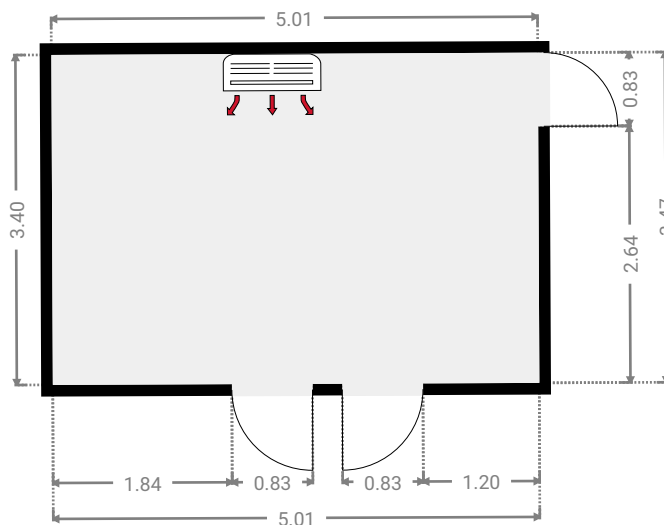
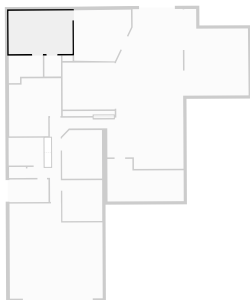
▼ Outdoor Area Ground Floor

WIDTH: 5.04 m • LENGTH: 6.85 m • CEILING HEIGHT: 2.17 m
AREA: 27.93 m² • PERIMETER: 23.69 m



▼ Primary Bedroom Ground Floor

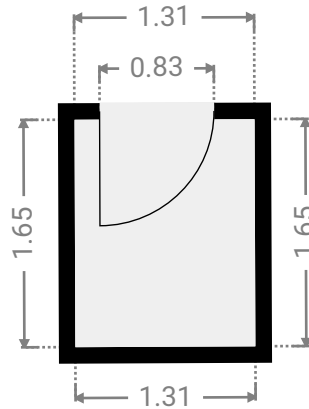
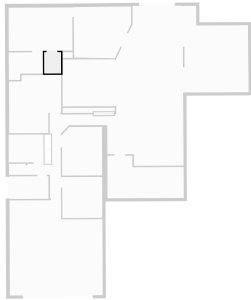
WIDTH: 5.01 m • LENGTH: 3.40 m
AREA: 17.04 m² • PERIMETER: 16.82 m



FLOORS: 1

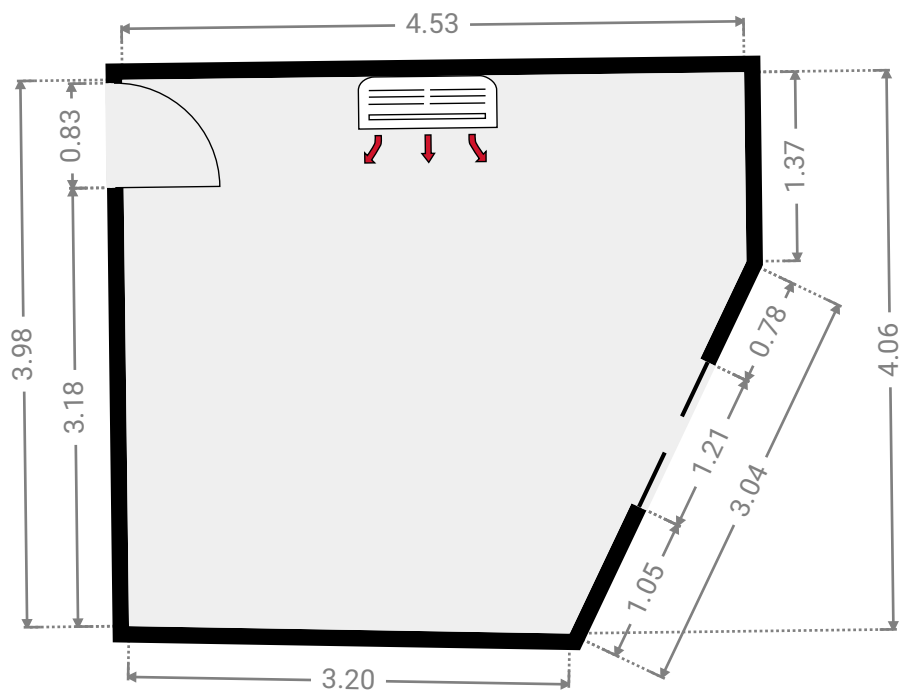
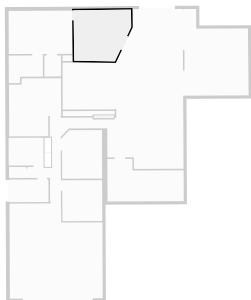
▼ **Closet**
Ground Floor

WIDTH: 1.31 m • LENGTH: 1.65 m
AREA: 2.16 m² • PERIMETER: 5.92 m



▼ **Study**
Ground Floor

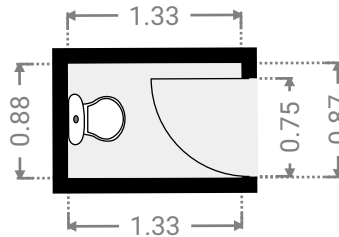
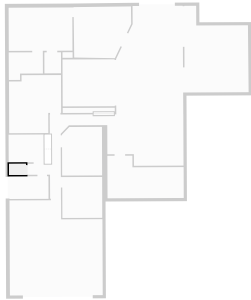
WIDTH: 4.52 m • LENGTH: 4.06 m • CEILING HEIGHT: 2.17 m
AREA: 16.43 m² • PERIMETER: 16.05 m



FLOORS: 1

▼ Toilet Ground Floor

WIDTH: 1.33 m • LENGTH: 0.87 m
AREA: 1.16 m² • PERIMETER: 4.40 m



▼ Verandah Ground Floor

WIDTH: 6.00 m • LENGTH: 3.35 m • CEILING HEIGHT: 2.17 m
AREA: 16.39 m² • PERIMETER: 18.70 m

