

# 3 Maple Street

**SUBMITTED BY**

Ray White Rockhampton Casey  
stockers@cqoz.com

---

**CREATED ON**

2022-12-07

---

**Floors**

1

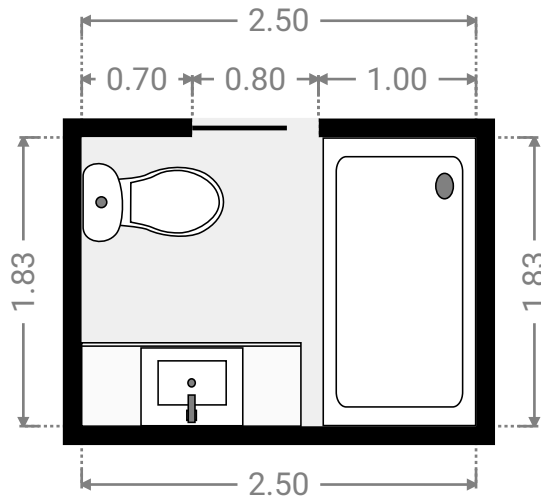
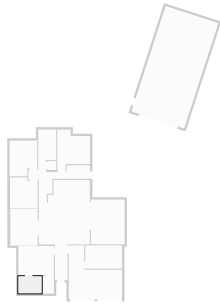
---

## ▼ Ground Floor



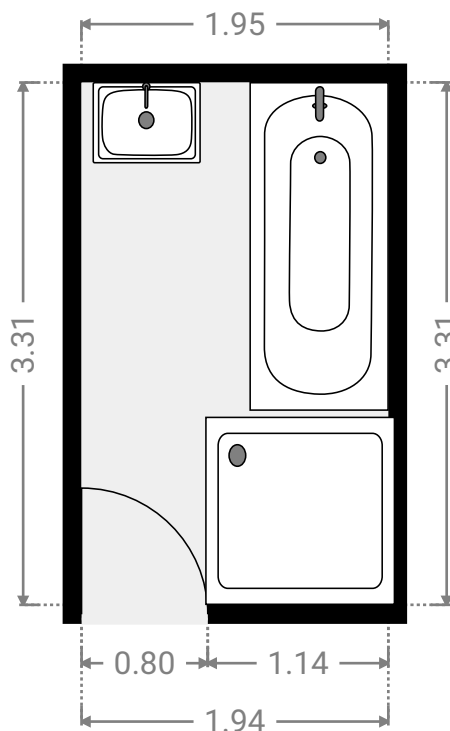
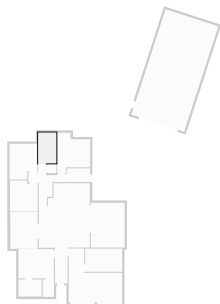
## ▼ Bathroom Ground Floor

WIDTH: 2.50 m • LENGTH: 1.83 m  
AREA: 4.58 m<sup>2</sup> • PERIMETER: 8.66 m



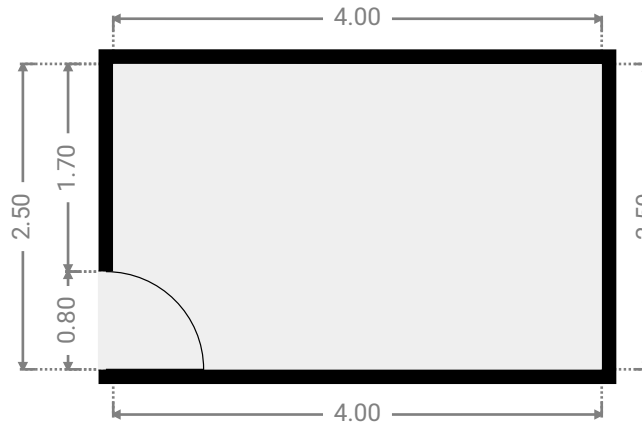
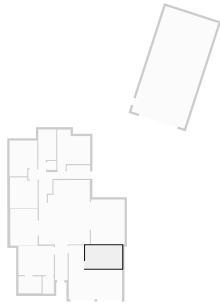
## ▼ Bathroom Ground Floor

WIDTH: 1.95 m • LENGTH: 3.31 m  
AREA: 6.44 m<sup>2</sup> • PERIMETER: 10.51 m



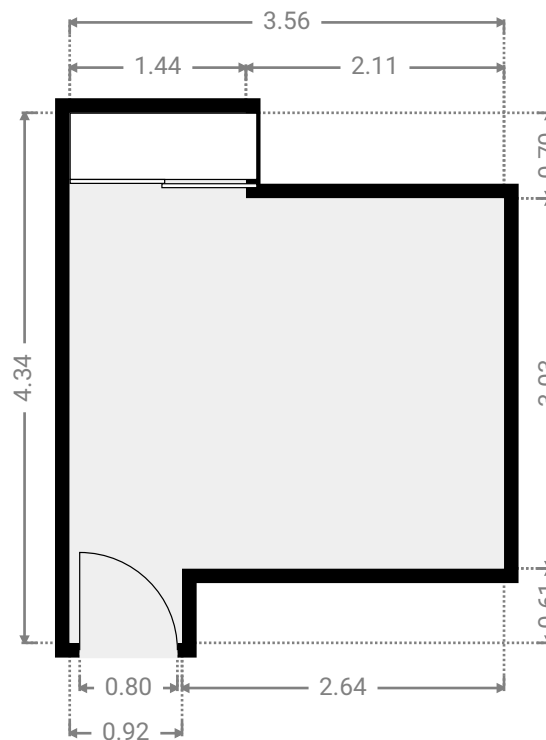
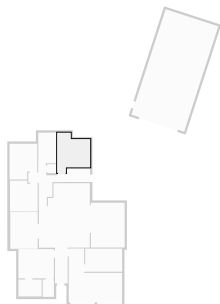
## ▼ Bedroom Ground Floor

WIDTH: 4.00 m • LENGTH: 2.50 m  
AREA: 10.00 m<sup>2</sup> • PERIMETER: 13.00 m



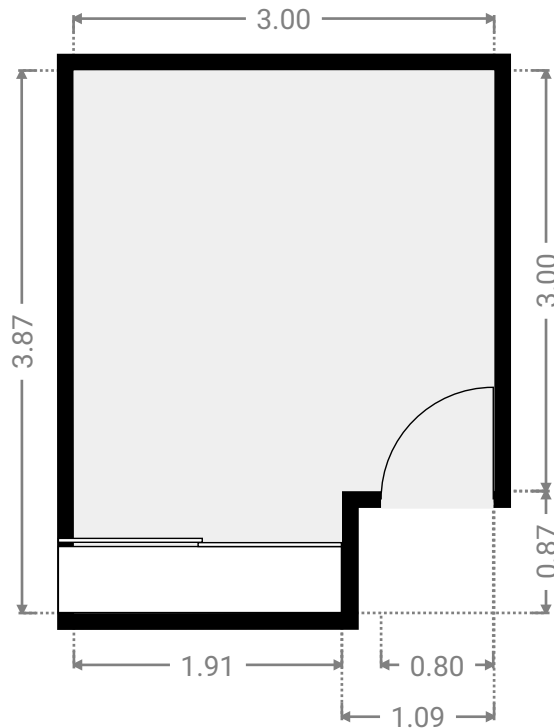
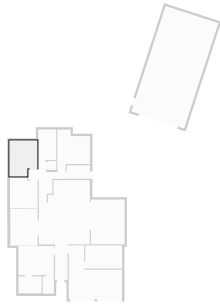
## ▼ Bedroom Ground Floor

WIDTH: 3.56 m • LENGTH: 4.34 m  
AREA: 12.35 m<sup>2</sup> • PERIMETER: 15.79 m



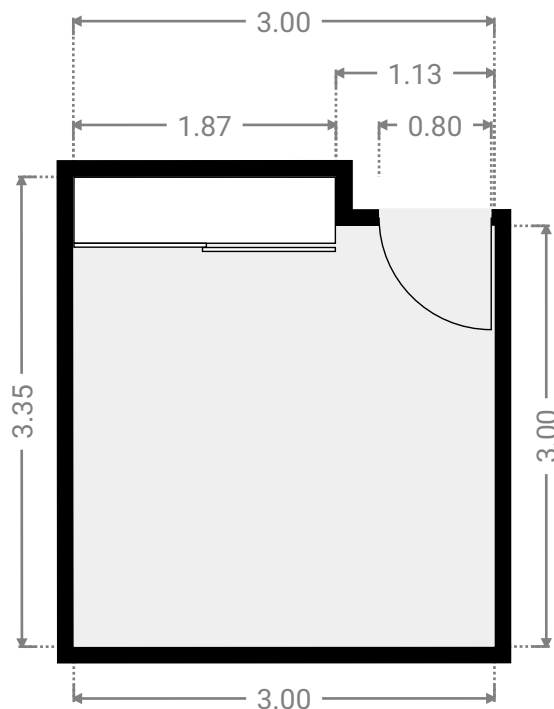
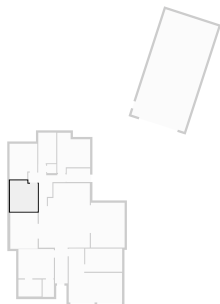
## ▼ Bedroom Ground Floor

WIDTH: 3.00 m • LENGTH: 3.87 m  
AREA: 10.66 m<sup>2</sup> • PERIMETER: 13.74 m



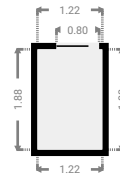
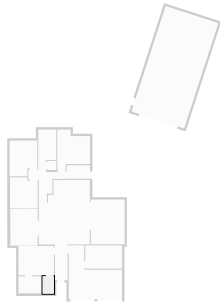
## ▼ Bedroom Ground Floor

WIDTH: 3.00 m • LENGTH: 3.35 m  
AREA: 9.66 m<sup>2</sup> • PERIMETER: 12.70 m



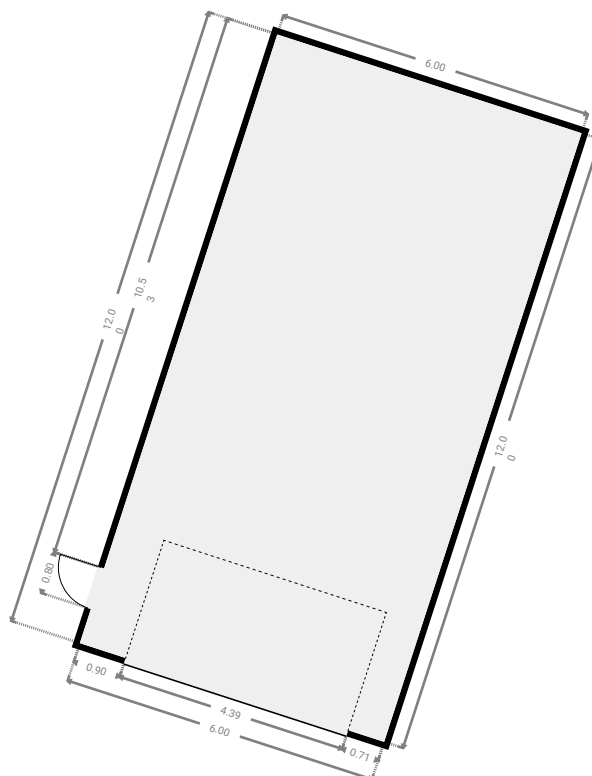
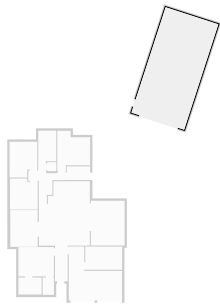
## ▼ Closet Ground Floor

WIDTH: 1.22 m • LENGTH: 1.88 m  
AREA: 2.29 m<sup>2</sup> • PERIMETER: 6.20 m



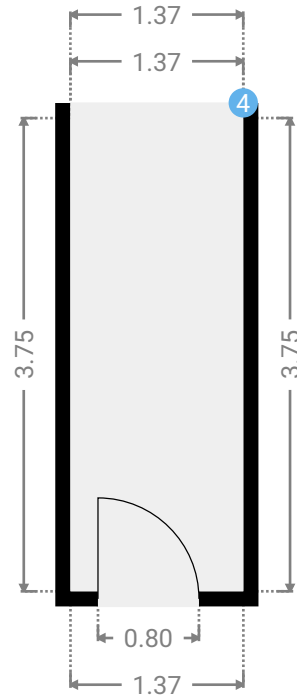
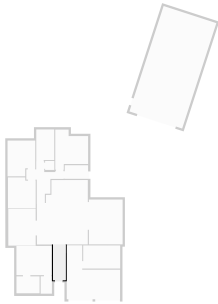
## ▼ Garage Ground Floor

WIDTH: 6.00 m • LENGTH: 12.00 m  
AREA: 72.00 m<sup>2</sup> • PERIMETER: 36.00 m



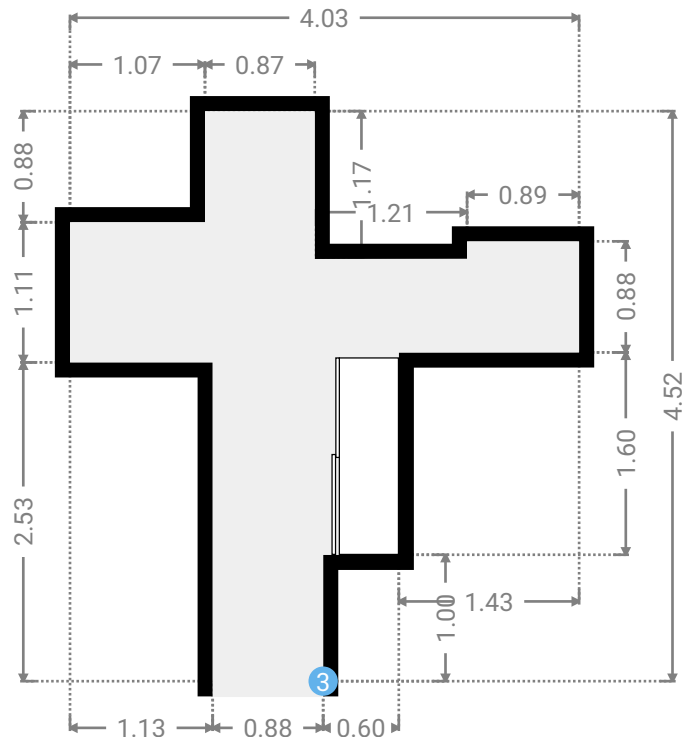
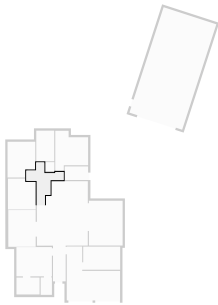
▼ **Hall**  
Ground Floor

WIDTH: 1.37 m • LENGTH: 3.75 m  
AREA: 5.14 m<sup>2</sup> • PERIMETER: 10.24 m



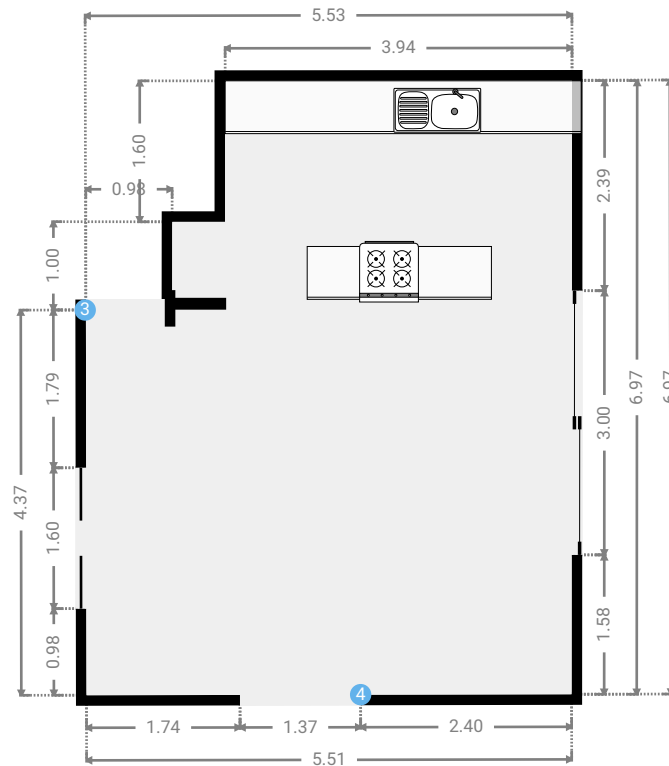
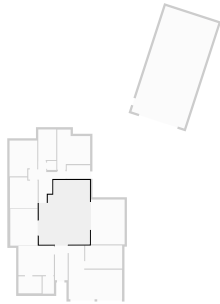
▼ **Hall**  
Ground Floor

WIDTH: 4.03 m • LENGTH: 4.52 m  
AREA: 7.77 m<sup>2</sup> • PERIMETER: 17.38 m



## ▼ Kitchen Ground Floor

WIDTH: 5.53 m • LENGTH: 6.97 m  
AREA: 34.96 m<sup>2</sup> • PERIMETER: 24.98 m



## ▼ Kitchen/Ground Floor

### 3 OPENING

Height  
0.00 m



### 4 OPENING

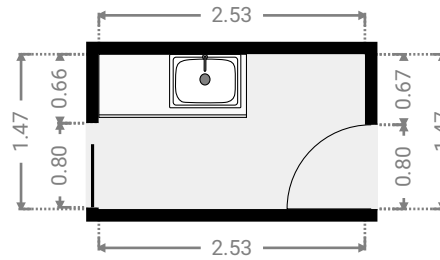
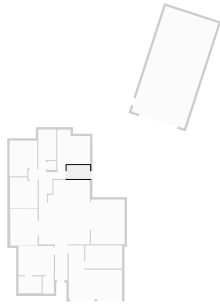
Height  
0.00 m





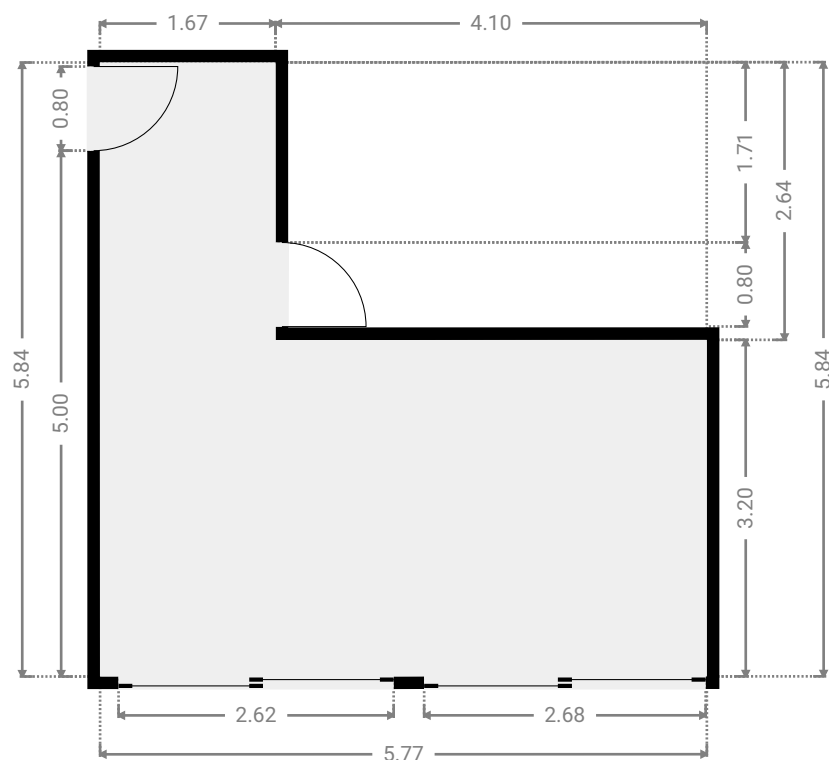
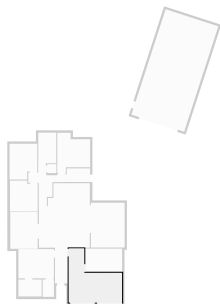
## ▼ Laundry Room Ground Floor

WIDTH: 2.53 m • LENGTH: 1.47 m  
AREA: 3.72 m<sup>2</sup> • PERIMETER: 8.00 m



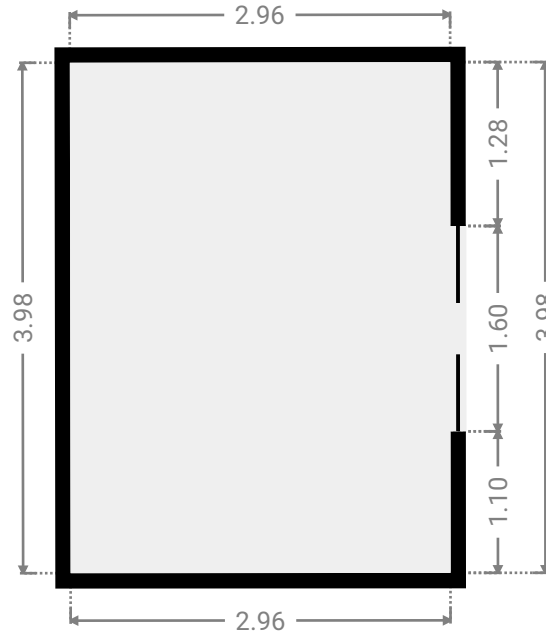
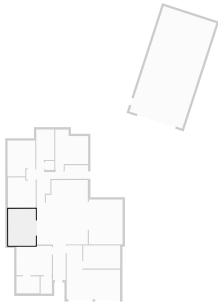
## ▼ Living Room Ground Floor

WIDTH: 5.77 m • LENGTH: 5.84 m  
AREA: 22.87 m<sup>2</sup> • PERIMETER: 23.22 m



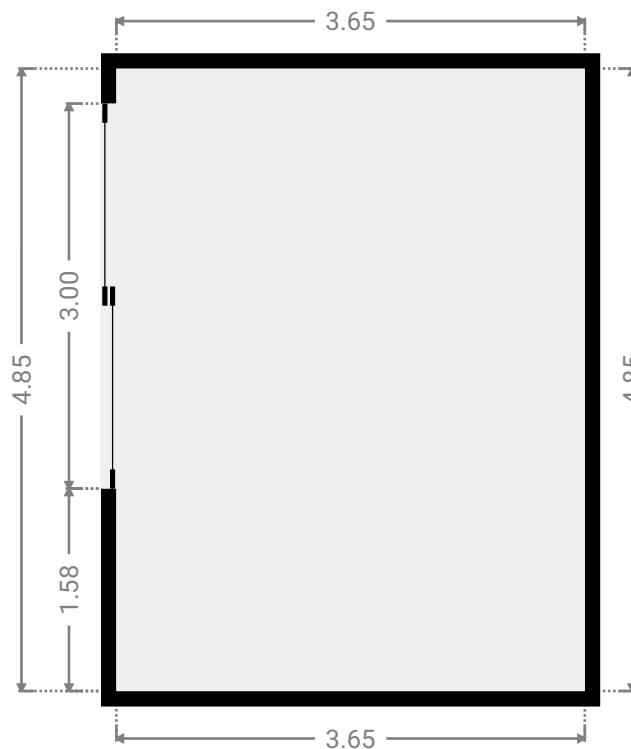
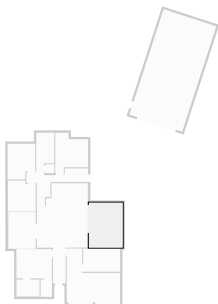
## ▼ Living Room Ground Floor

WIDTH: 2.96 m • LENGTH: 3.98 m  
AREA: 11.78 m<sup>2</sup> • PERIMETER: 13.88 m



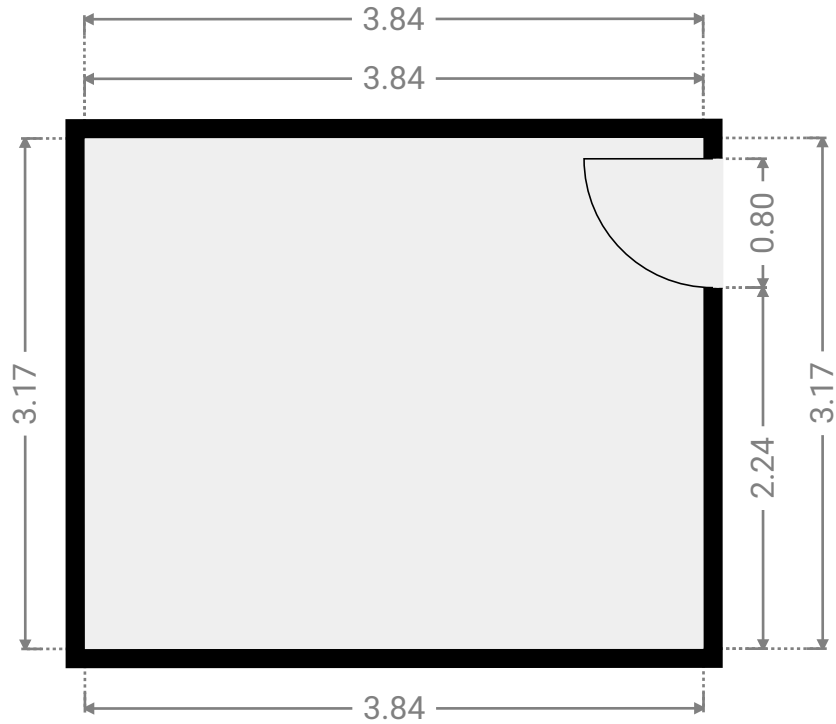
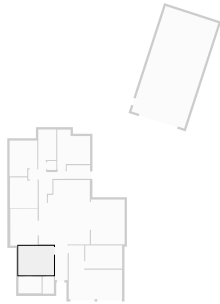
## ▼ Other Ground Floor

WIDTH: 3.65 m • LENGTH: 4.85 m  
AREA: 17.70 m<sup>2</sup> • PERIMETER: 17.00 m



## ▼ Primary Bedroom Ground Floor

WIDTH: 3.84 m • LENGTH: 3.17 m  
AREA: 12.17 m<sup>2</sup> • PERIMETER: 14.02 m



## ▼ Toilet Ground Floor

WIDTH: 1.00 m • LENGTH: 0.97 m  
AREA: 0.97 m<sup>2</sup> • PERIMETER: 3.94 m

