

# 3 Lace Flower Court

**SUBMITTED BY**  
Ray White Rockhampton Casey  
stockers@cqoz.com

---

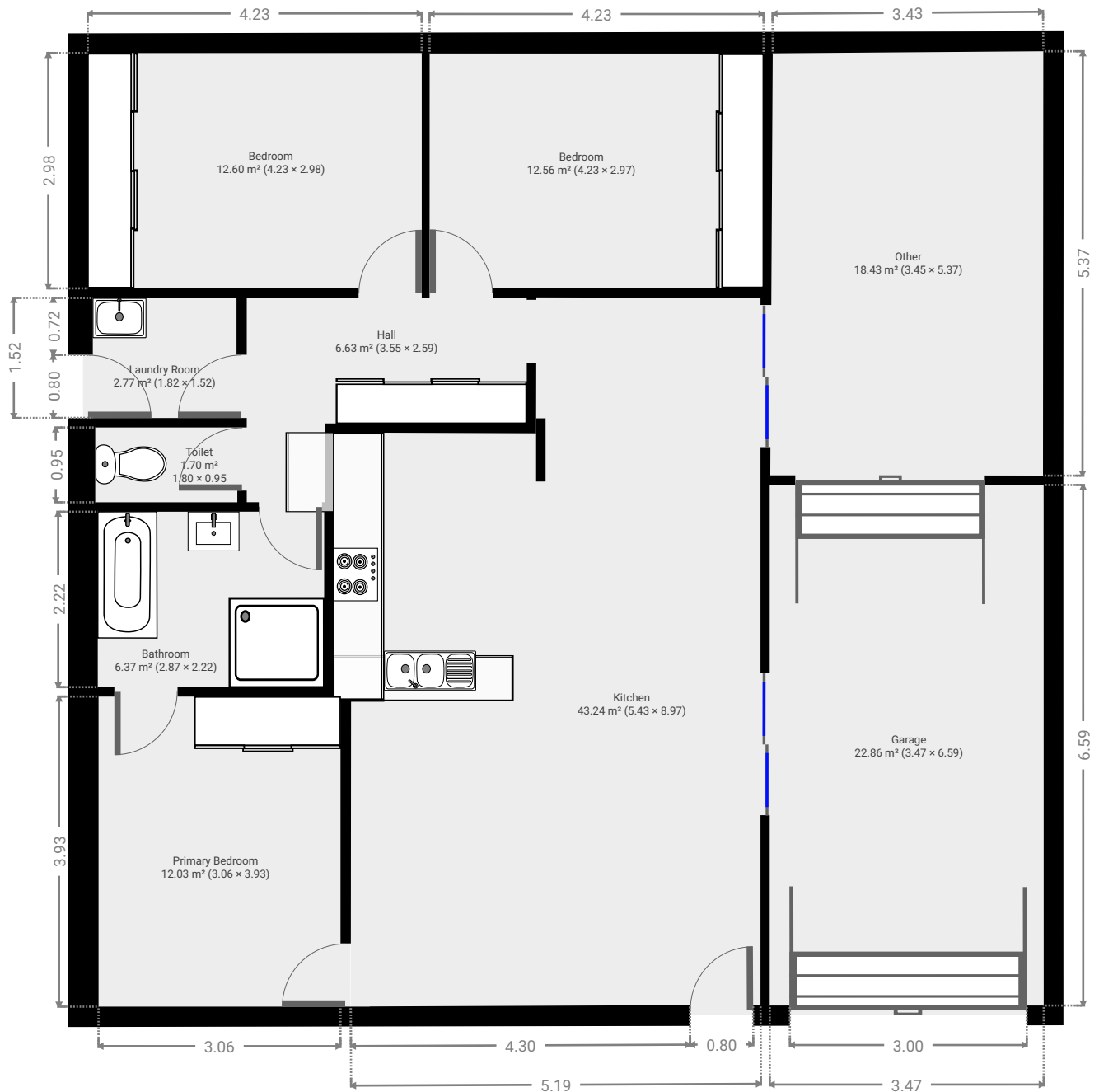
**CREATED ON**  
2022-03-08

---

**Floors**  
1

---

## ▼ Ground Floor



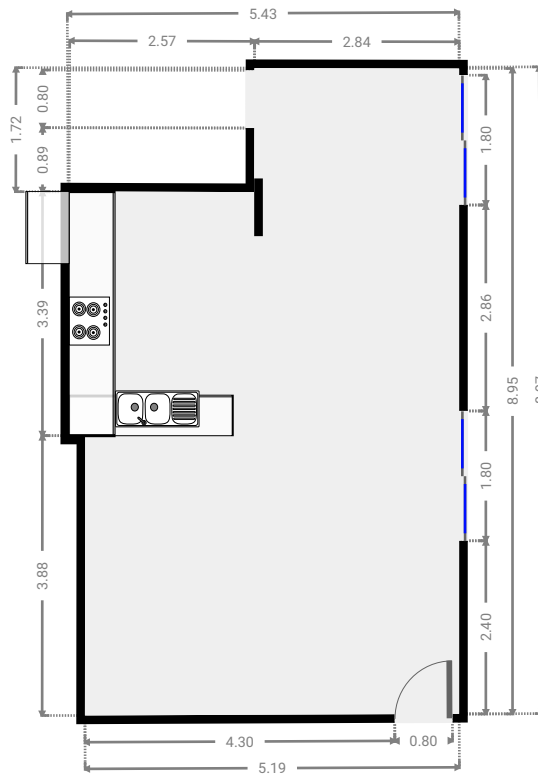
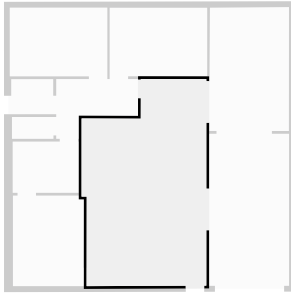
# 3 Lace Flower Court

FLOORS: 1



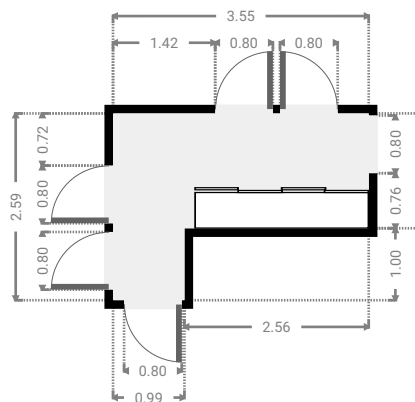
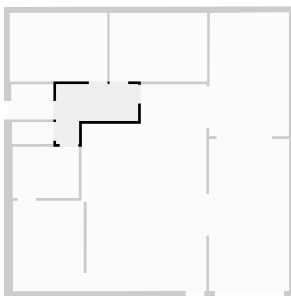
## ▼ Kitchen Ground Floor

WIDTH: 5.43 m • LENGTH: 8.97 m  
AREA: 43.24 m<sup>2</sup> • PERIMETER: 28.76 m



## ▼ Hall Ground Floor

WIDTH: 3.55 m • LENGTH: 2.59 m  
AREA: 6.63 m<sup>2</sup> • PERIMETER: 12.27 m

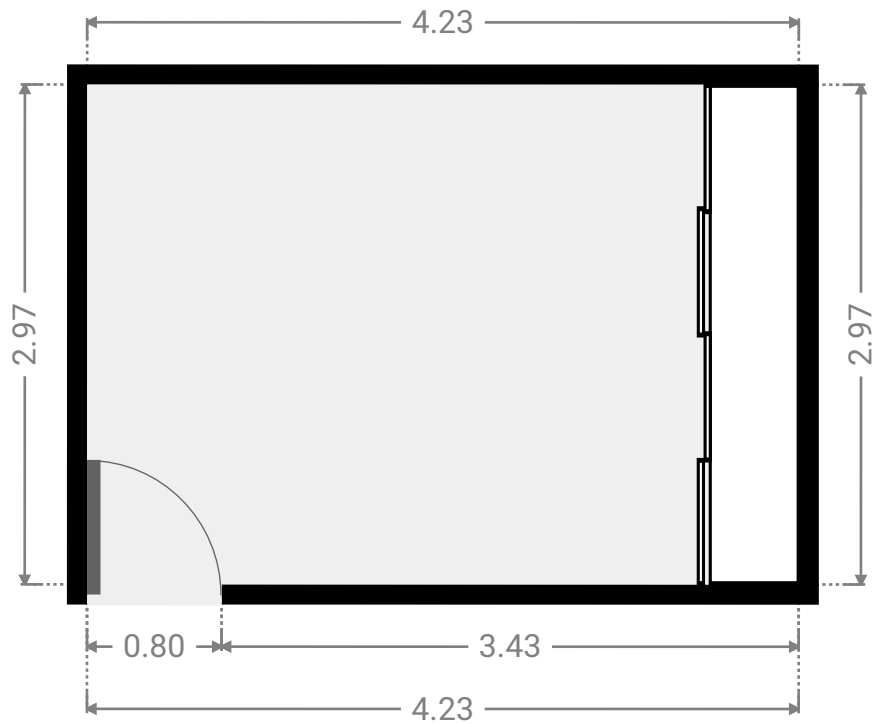
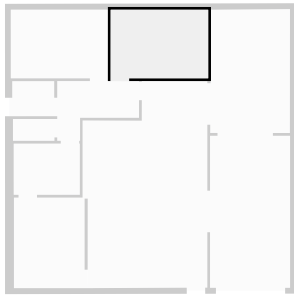


# 3 Lace Flower Court

FLOORS: 1

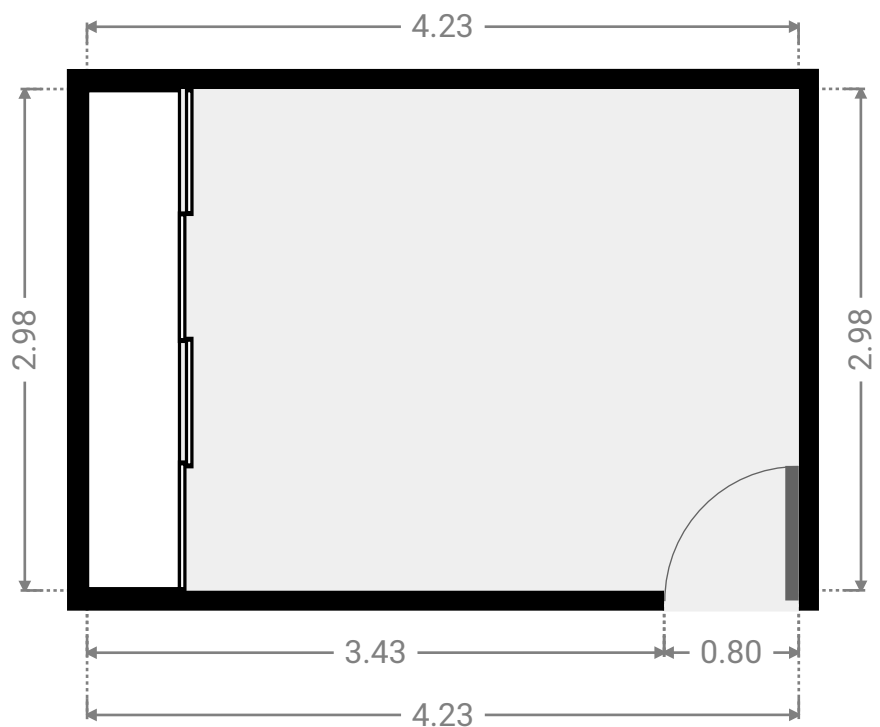
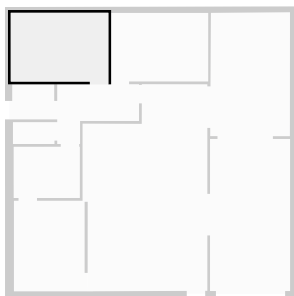
## ▼ Bedroom Ground Floor

WIDTH: 4.23 m • LENGTH: 2.97 m  
AREA: 12.56 m<sup>2</sup> • PERIMETER: 14.40 m



## ▼ Bedroom Ground Floor

WIDTH: 4.23 m • LENGTH: 2.98 m  
AREA: 12.60 m<sup>2</sup> • PERIMETER: 14.42 m

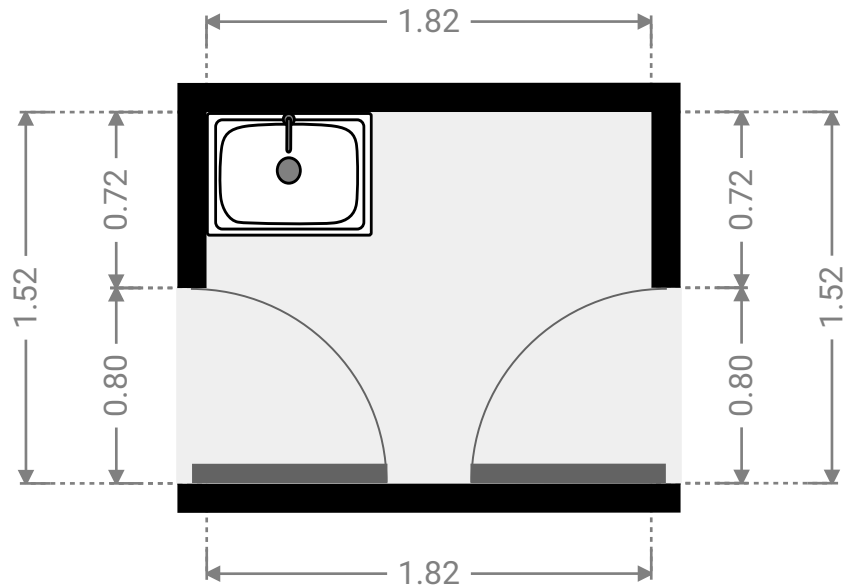
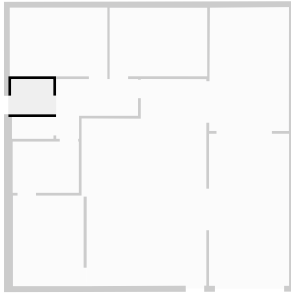


### 3 Lace Flower Court

FLOORS: 1

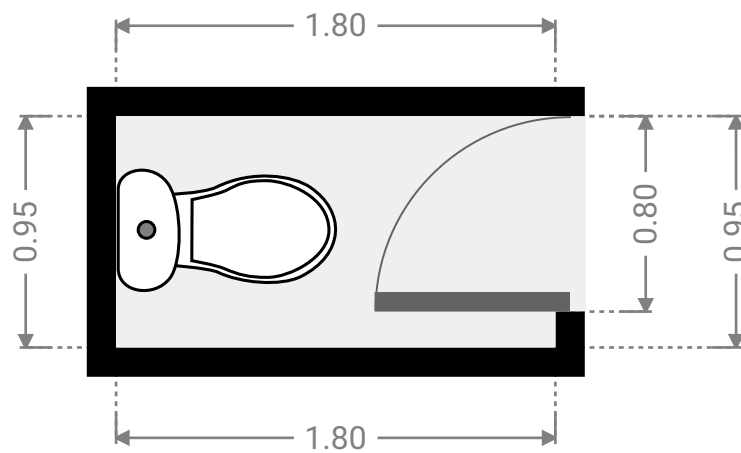
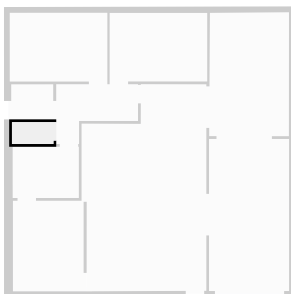
#### ▼ Laundry Room Ground Floor

WIDTH: 1.82 m • LENGTH: 1.52 m  
AREA: 2.77 m<sup>2</sup> • PERIMETER: 6.68 m



#### ▼ Toilet Ground Floor

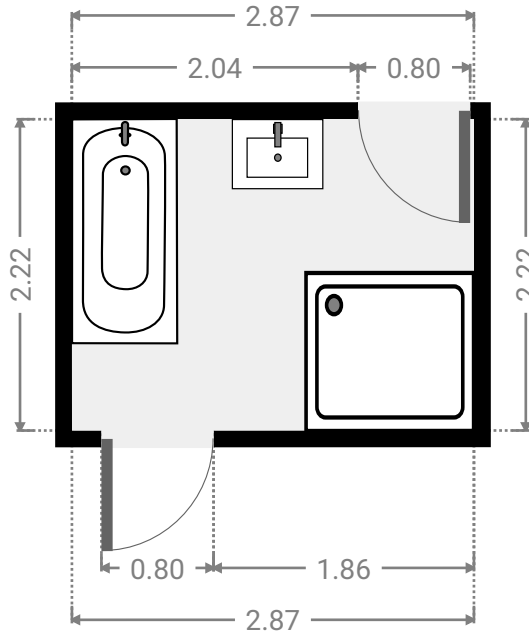
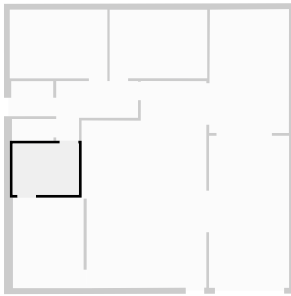
WIDTH: 1.80 m • LENGTH: 0.95 m  
AREA: 1.70 m<sup>2</sup> • PERIMETER: 5.49 m



FLOORS: 1

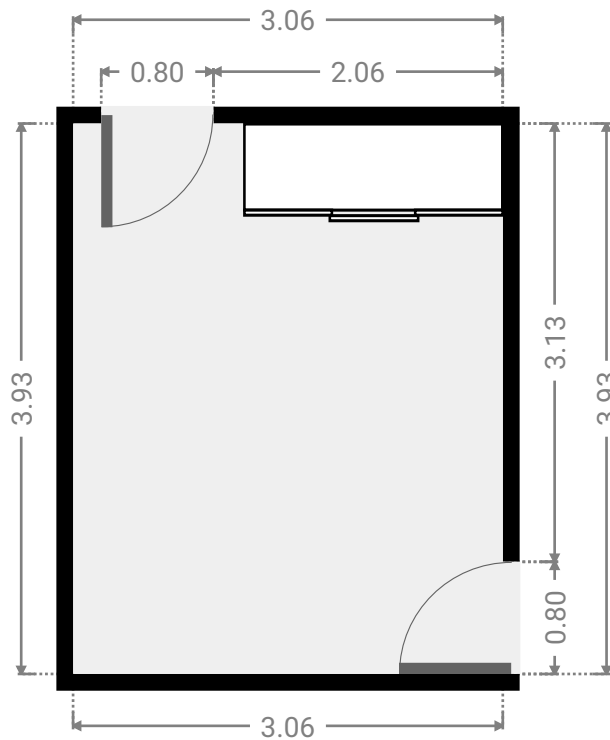
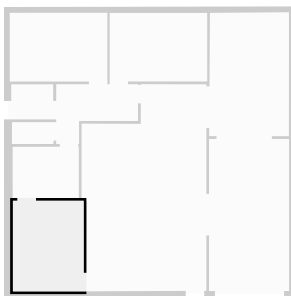
## ▼ Bathroom Ground Floor

WIDTH: 2.87 m • LENGTH: 2.22 m  
AREA: 6.37 m<sup>2</sup> • PERIMETER: 10.18 m



## ▼ Primary Bedroom Ground Floor

WIDTH: 3.06 m • LENGTH: 3.93 m  
AREA: 12.03 m<sup>2</sup> • PERIMETER: 13.98 m



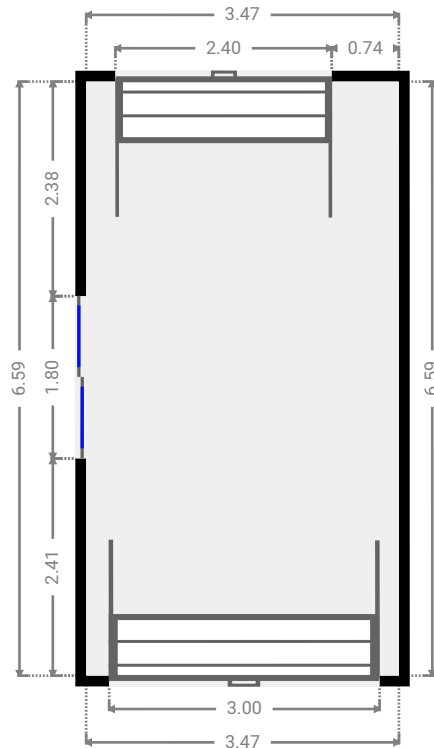
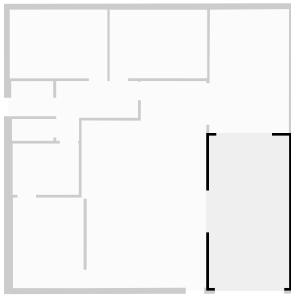
# 3 Lace Flower Court

FLOORS: 1



## ▼ Garage Ground Floor

WIDTH: 3.47 m • LENGTH: 6.59 m  
AREA: 22.86 m<sup>2</sup> • PERIMETER: 20.12 m



## ▼ Other Ground Floor

WIDTH: 3.45 m • LENGTH: 5.37 m  
AREA: 18.43 m<sup>2</sup> • PERIMETER: 17.60 m

