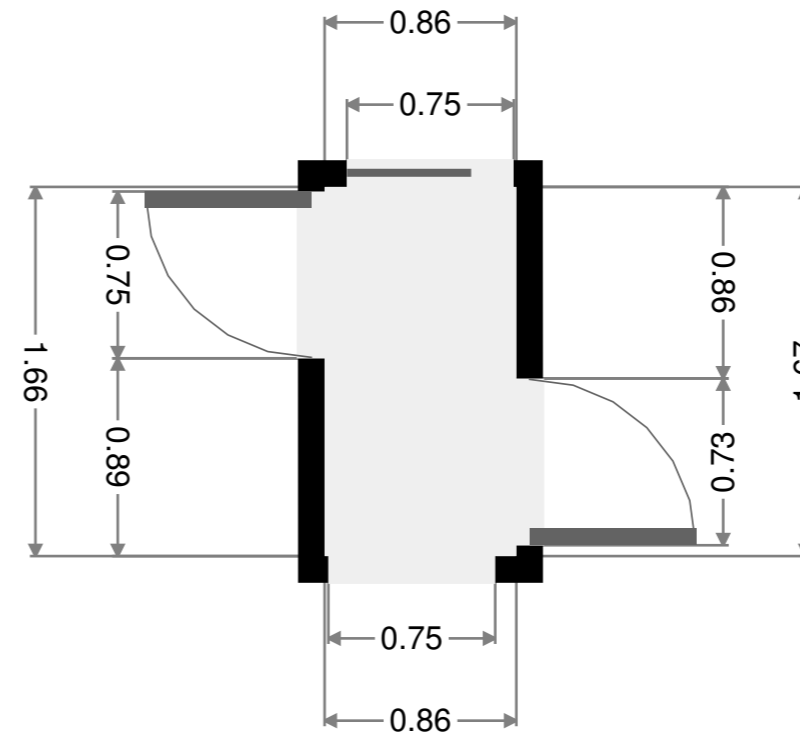
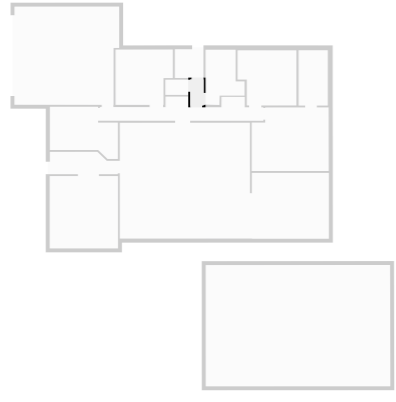




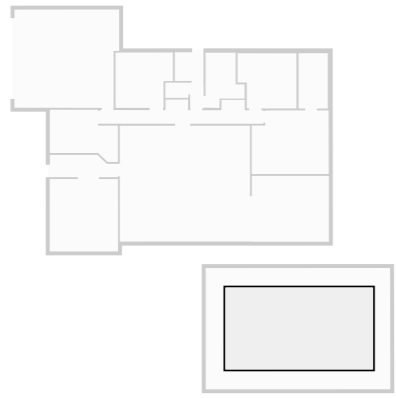
Hall

Width: 0.86 m
Length: 1.66 m
Area: 1.43 m²
Perimeter: 5.04 m



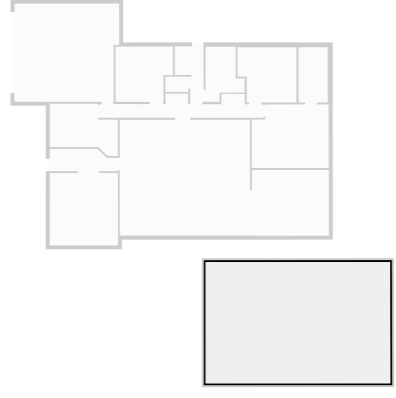
Pool

Width: 5.25 m
Length: 9.46 m
Area: 49.65 m²
Perimeter: 29.41 m
Ceiling Height: 2.17 m



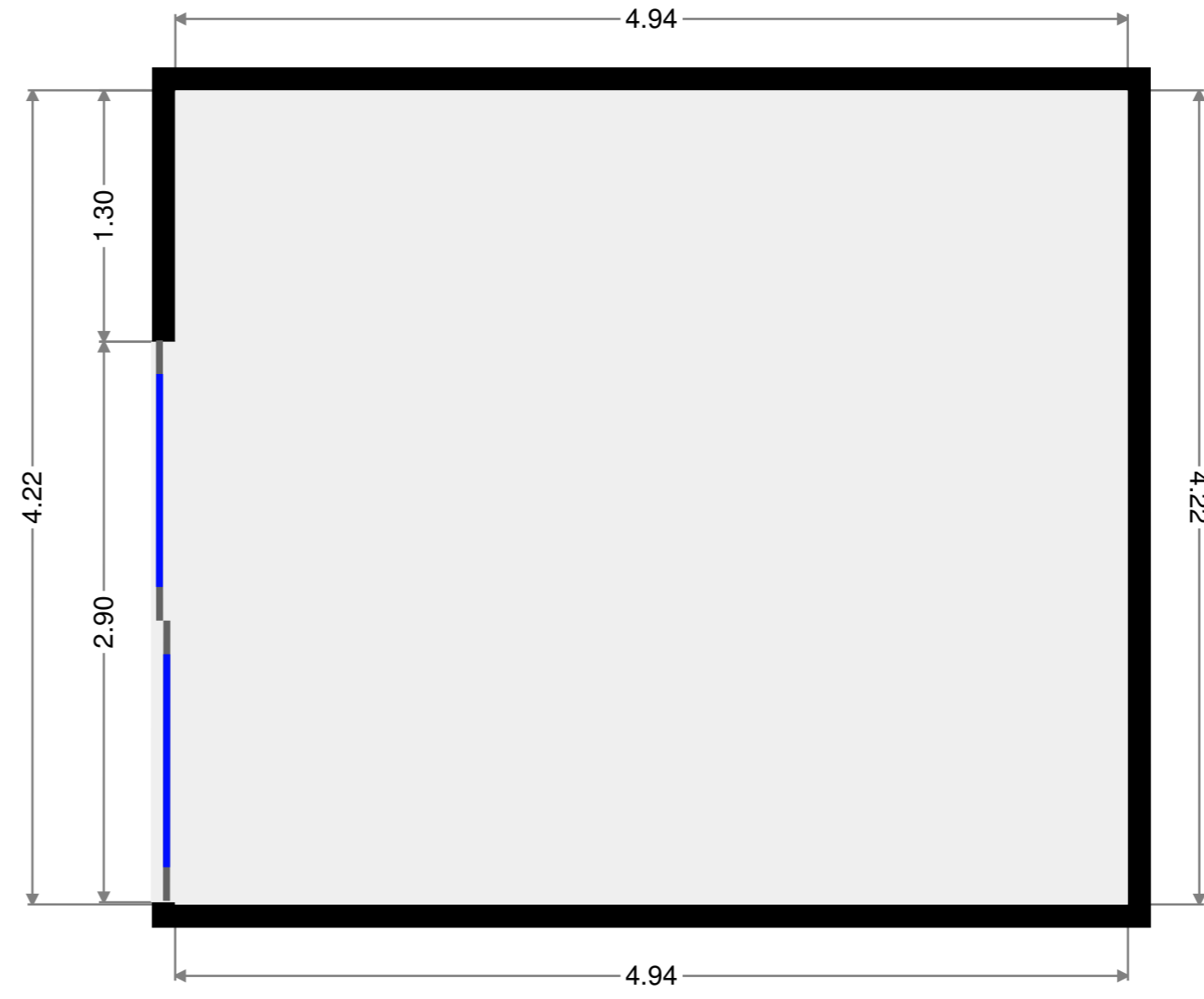
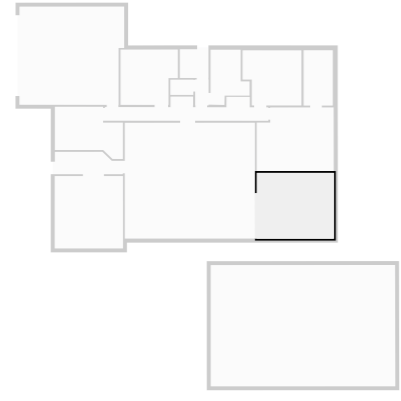
Pool Area

Width: 7.77 m
Length: 11.83 m
Area: 91.89 m²
Perimeter: 39.19 m
Ceiling Height: 2.17 m



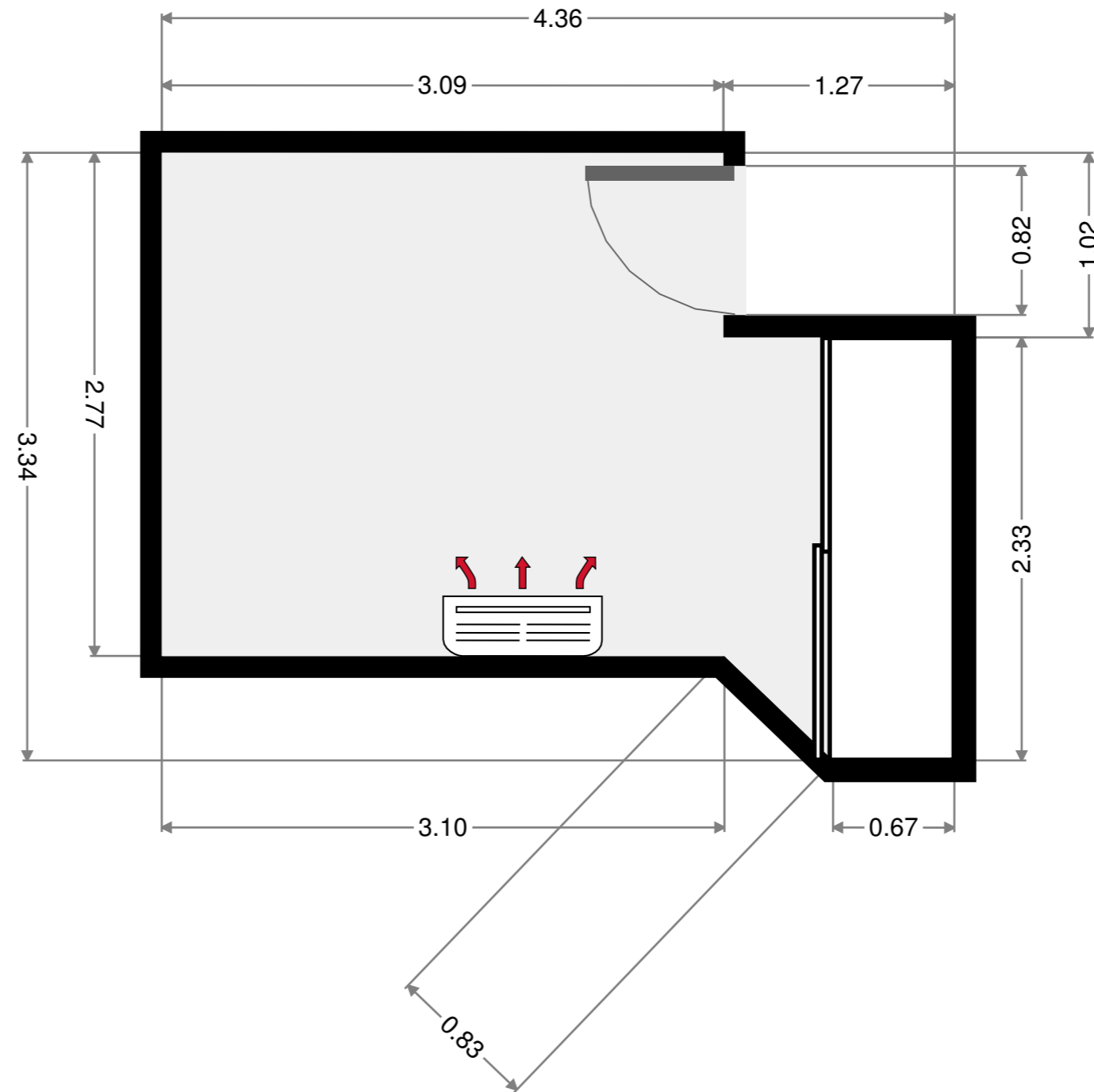
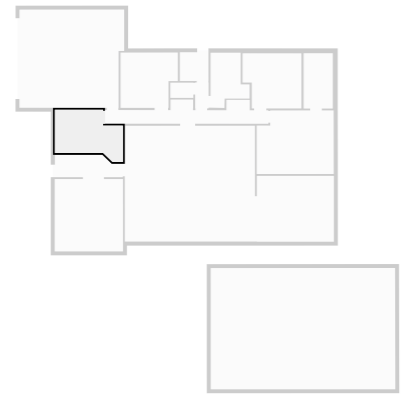
Outdoor Area

Width: 4.22 m
 Length: 4.94 m
 Area: 20.82 m²
 Perimeter: 18.31 m
 Ceiling Height: 2.17 m



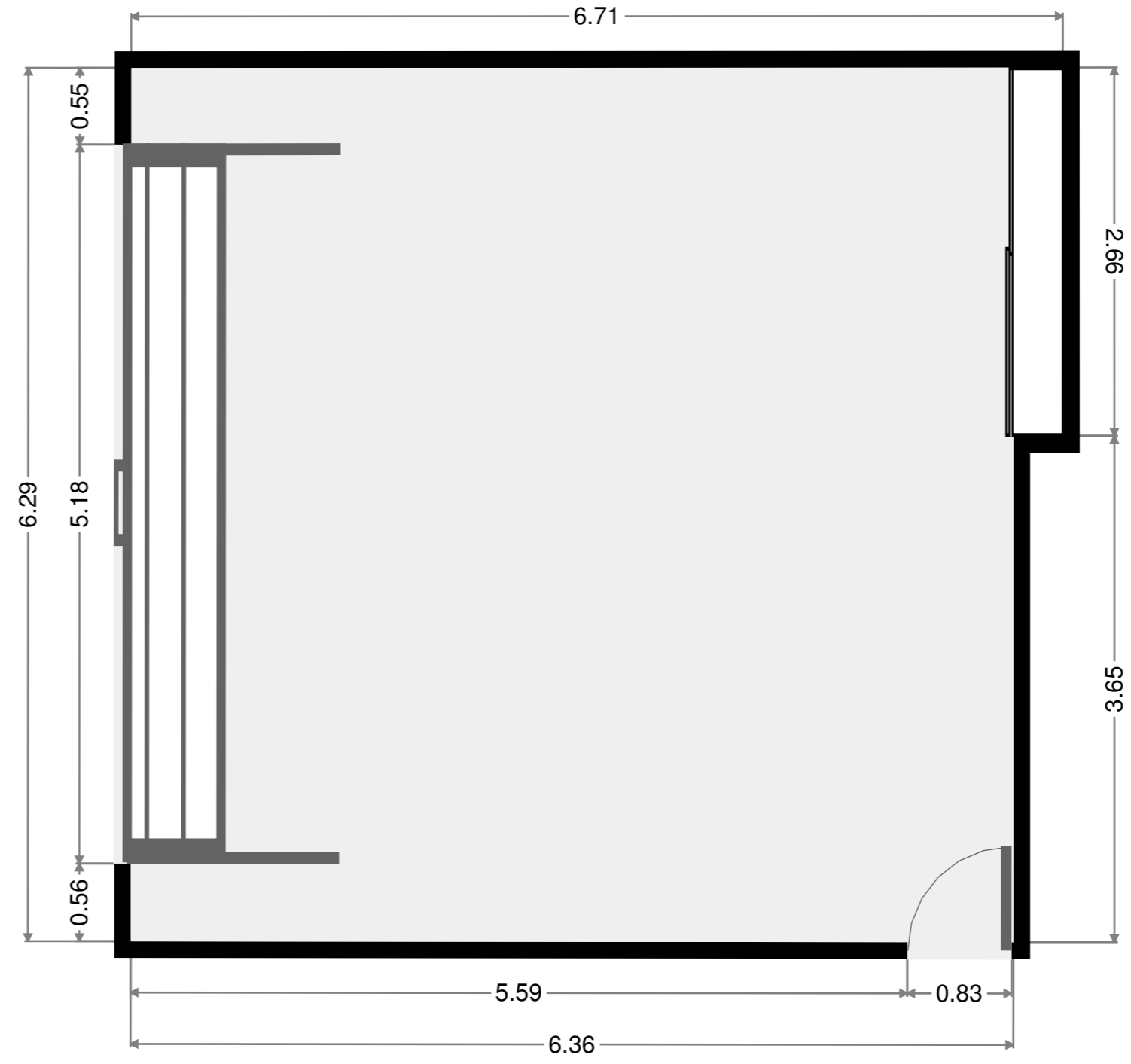
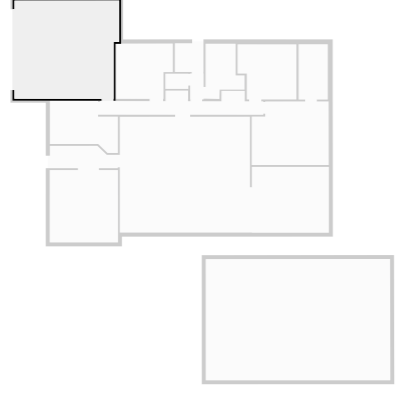
Bedroom

Width: 3.34 m
 Length: 4.36 m
 Area: 11.34 m²
 Perimeter: 15.06 m
 Ceiling Height: 2.17 m



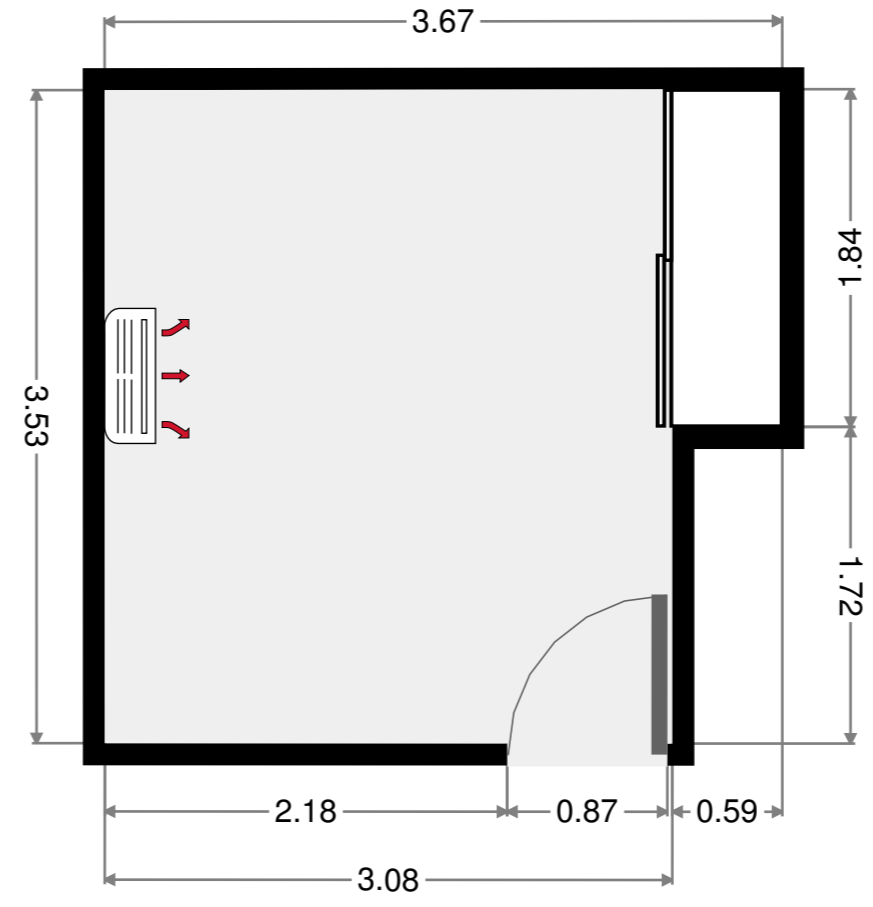
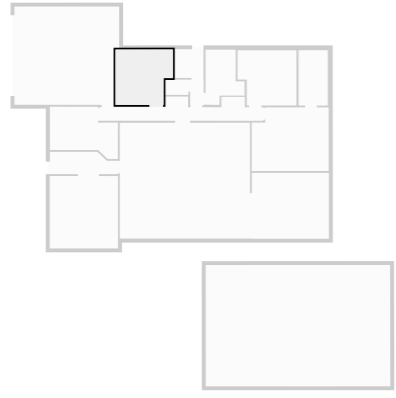
Garage

Width: 6.29 m
 Length: 6.71 m
 Area: 40.94 m²
 Perimeter: 26.01 m
 Ceiling Height: 2.17 m



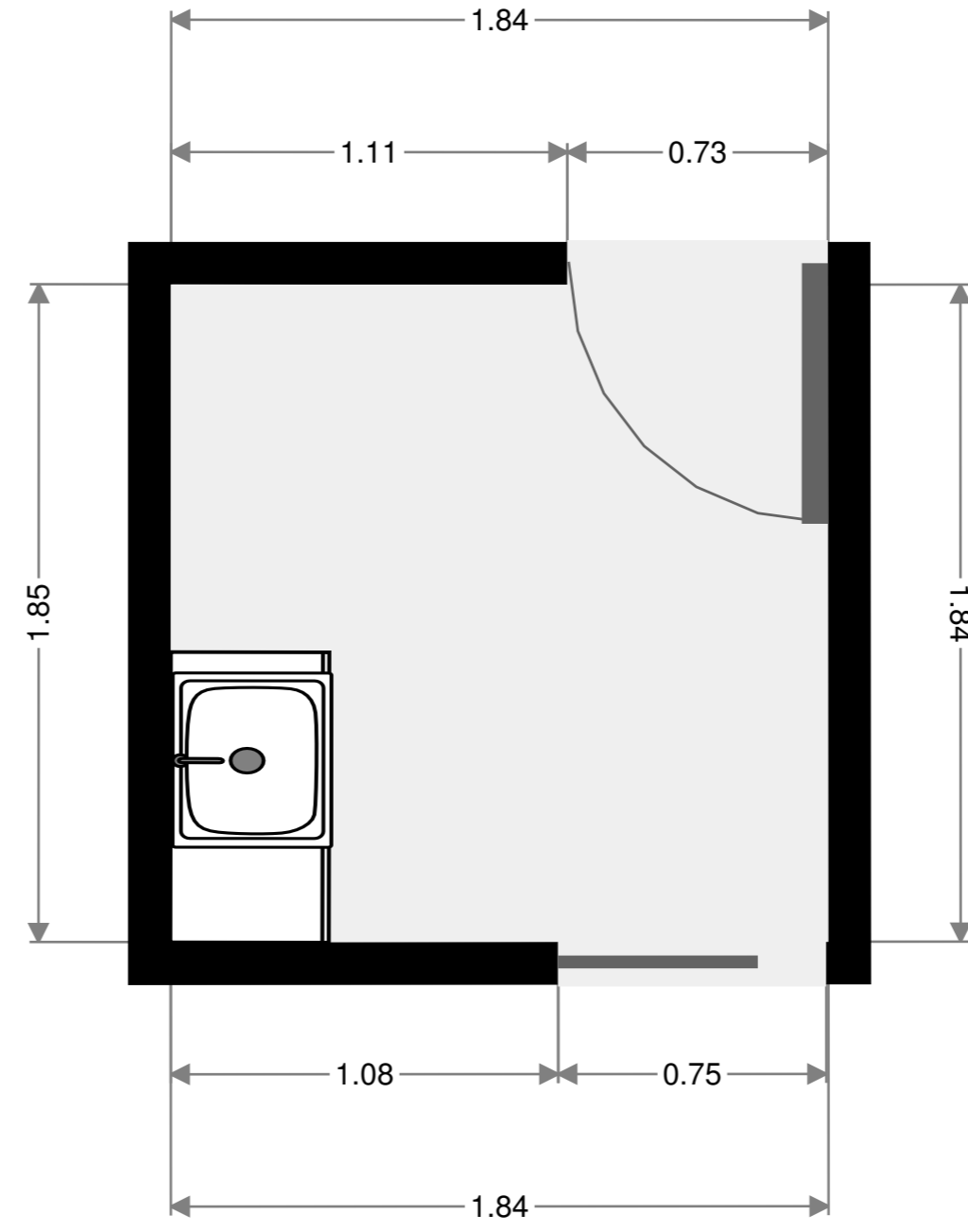
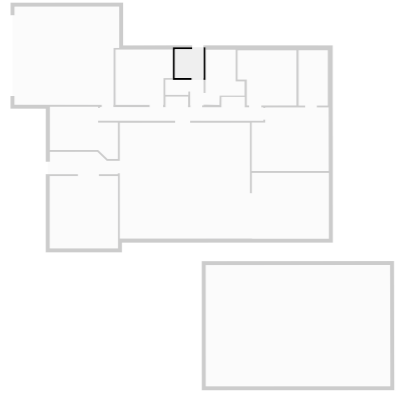
Bedroom

Width: 3.53 m
 Length: 3.67 m
 Area: 12.00 m²
 Perimeter: 14.44 m
 Ceiling Height: 2.17 m



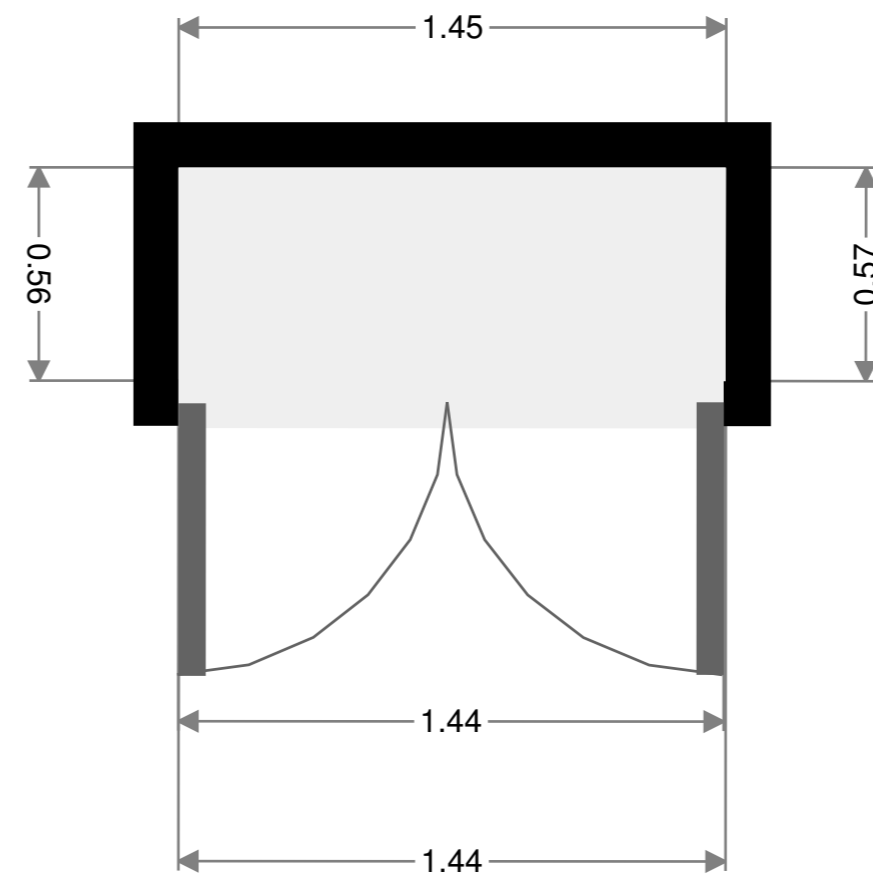
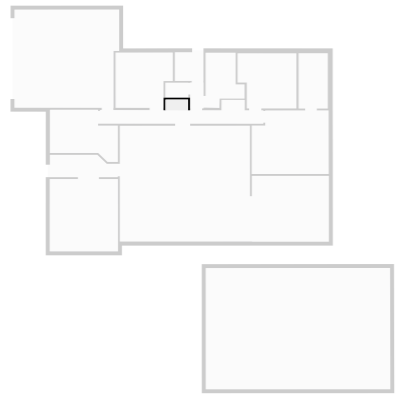
Laundry Room

Width: 1.84 m
 Length: 1.85 m
 Area: 3.38 m²
 Perimeter: 7.36 m



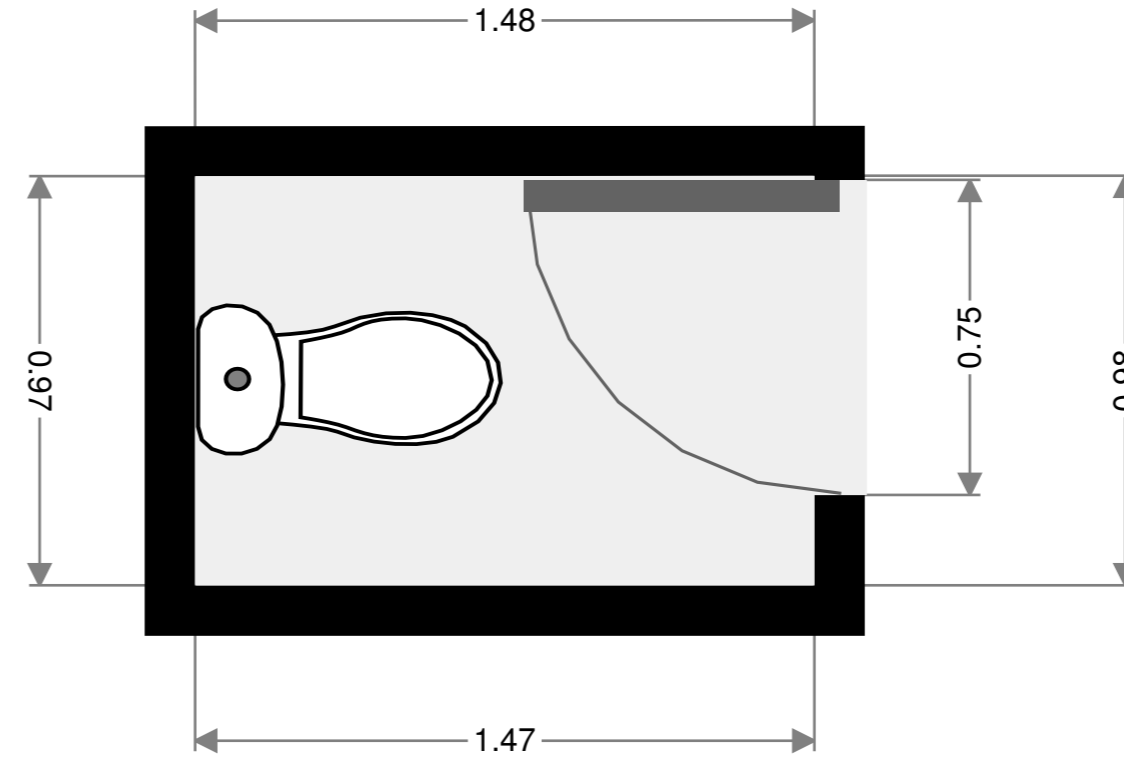
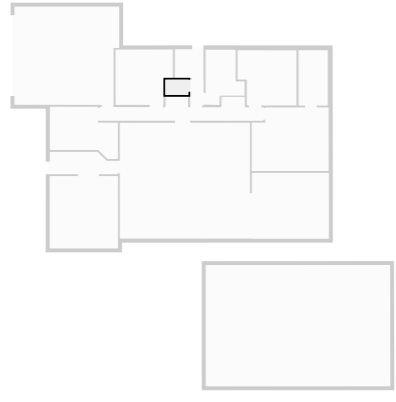
Closet

Width: 0.57 m
 Length: 1.45 m
 Area: 0.82 m²
 Perimeter: 4.02 m



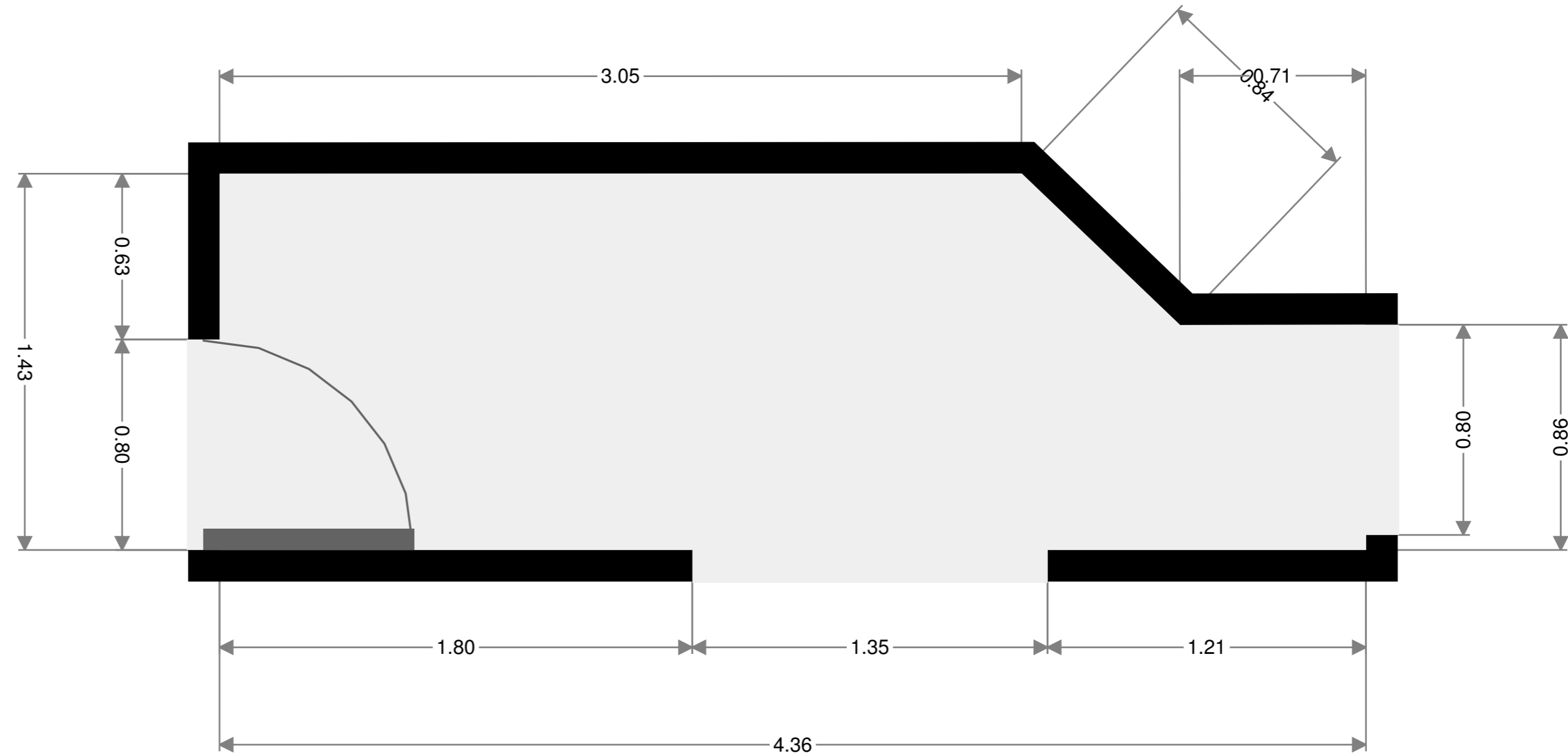
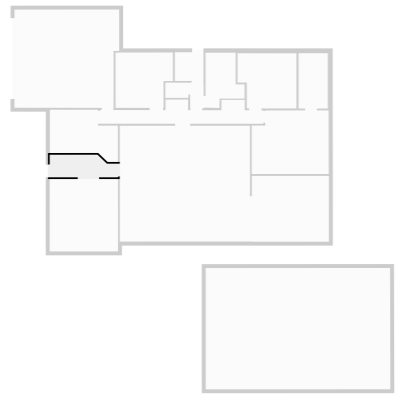
Toilet

Width: 0.97 m
Length: 1.48 m
Area: 1.44 m²
Perimeter: 4.90 m



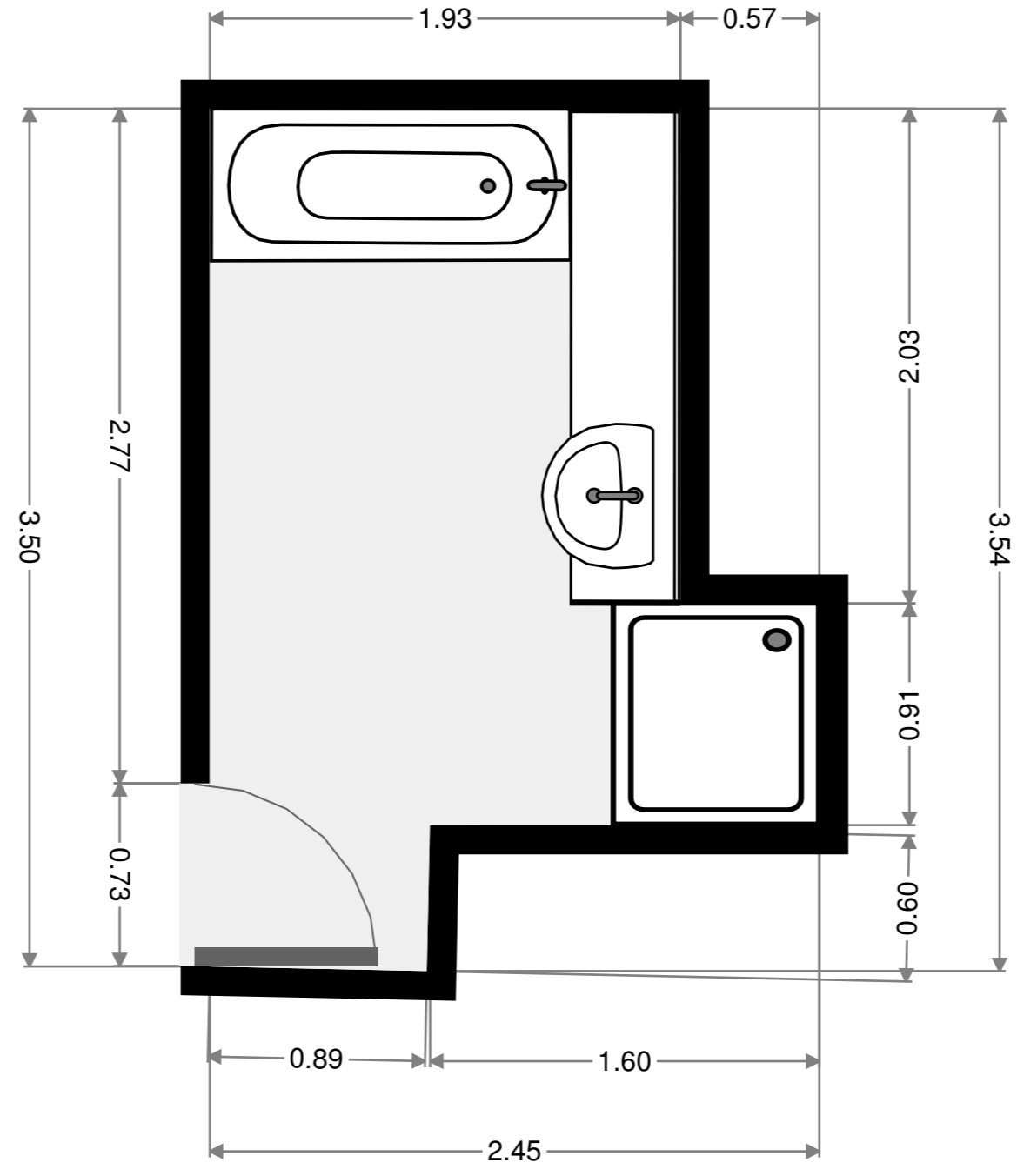
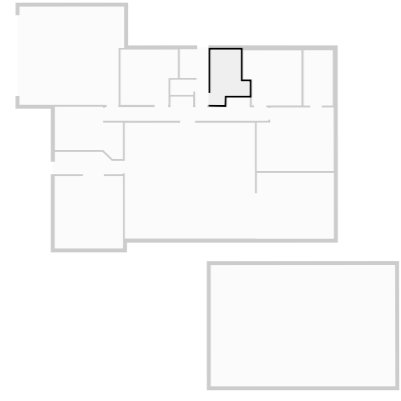
Hall

Width: 1.43 m
Length: 4.36 m
Area: 5.65 m²
Perimeter: 11.23 m
Ceiling Height: 2.17 m



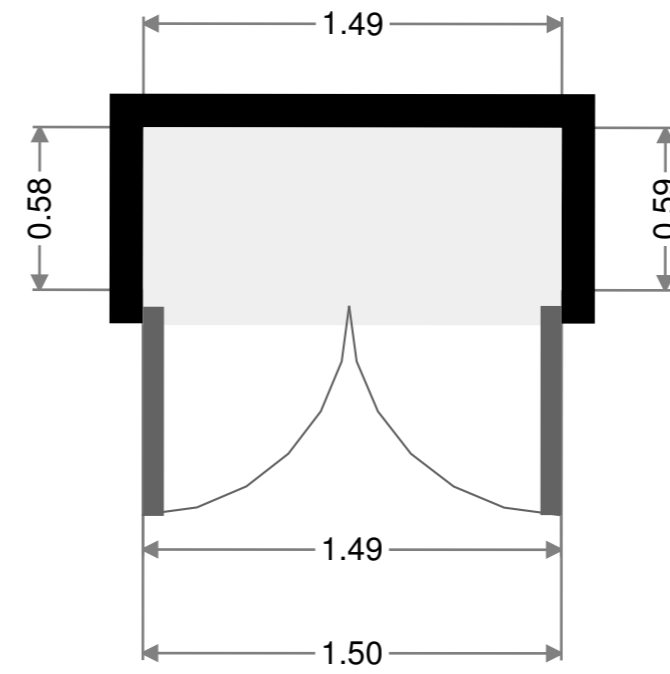
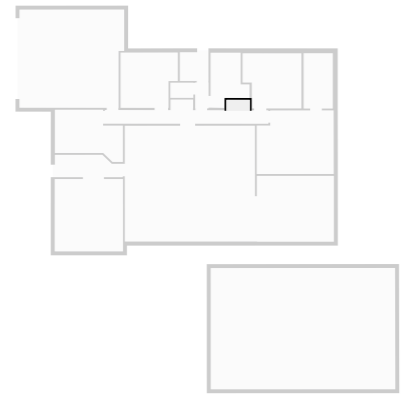
Bathroom

Width: 2.45 m
 Length: 3.54 m
 Area: 6.73 m²
 Perimeter: 12.05 m
 Ceiling Height: 2.17 m



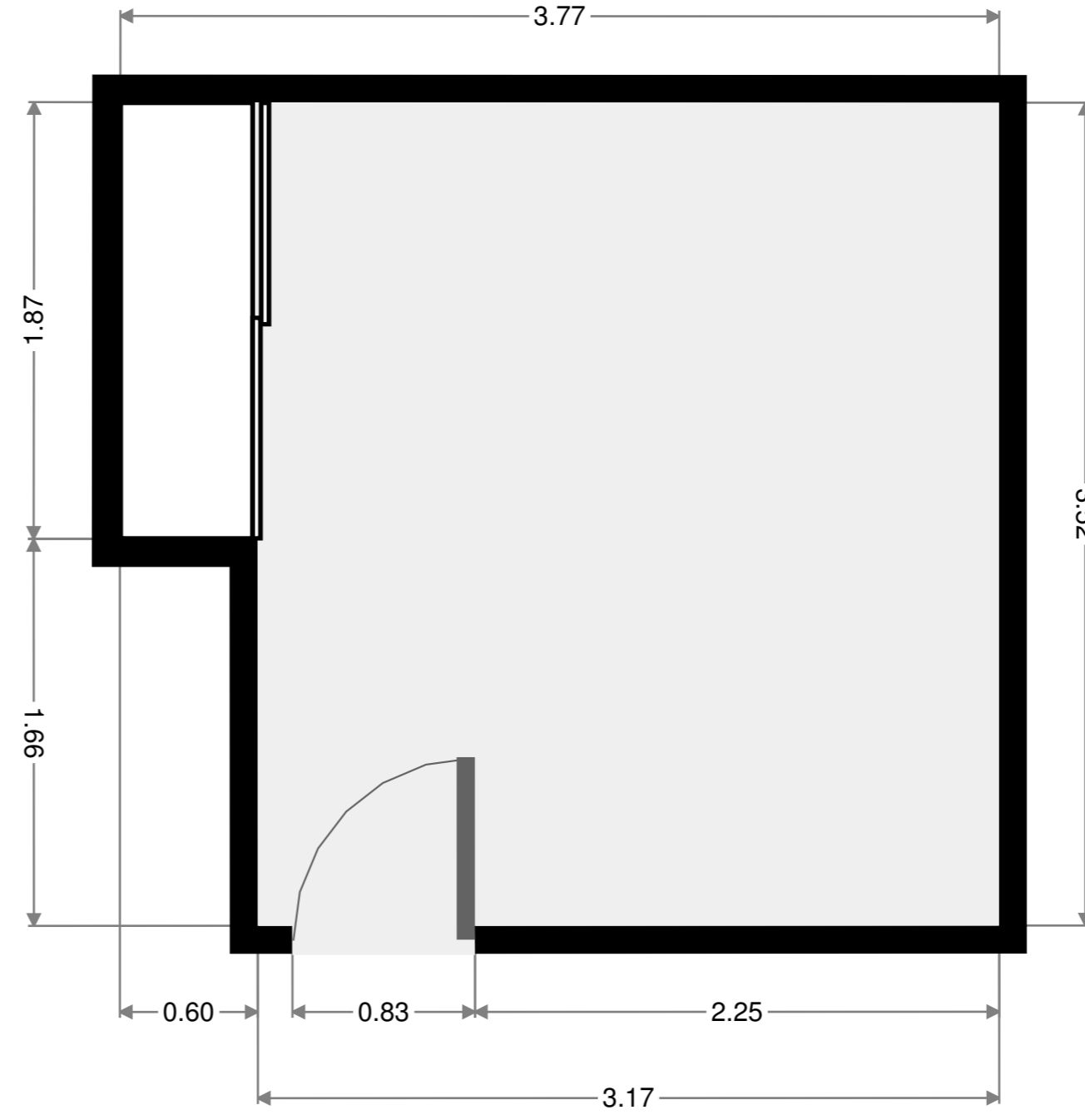
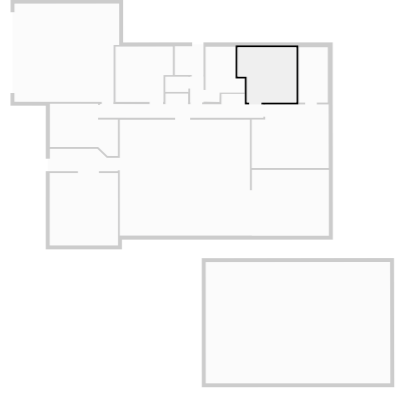
Closet

Width: 0.59 m
 Length: 1.49 m
 Area: 0.87 m²
 Perimeter: 4.15 m



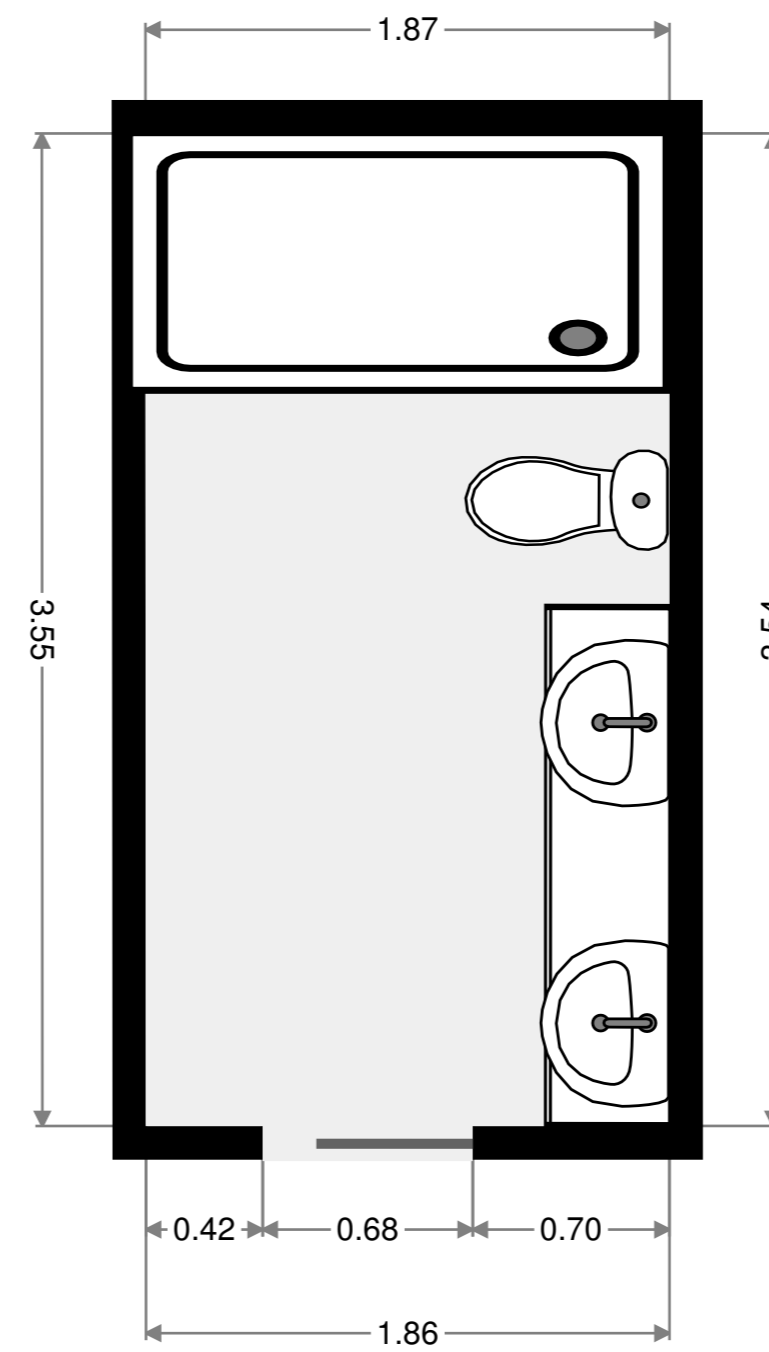
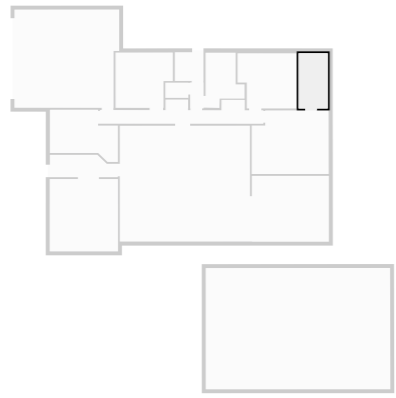
Bedroom

Width: 3.52 m
Length: 3.77 m
Area: 12.34 m²
Perimeter: 14.61 m
Ceiling Height: 2.17 m



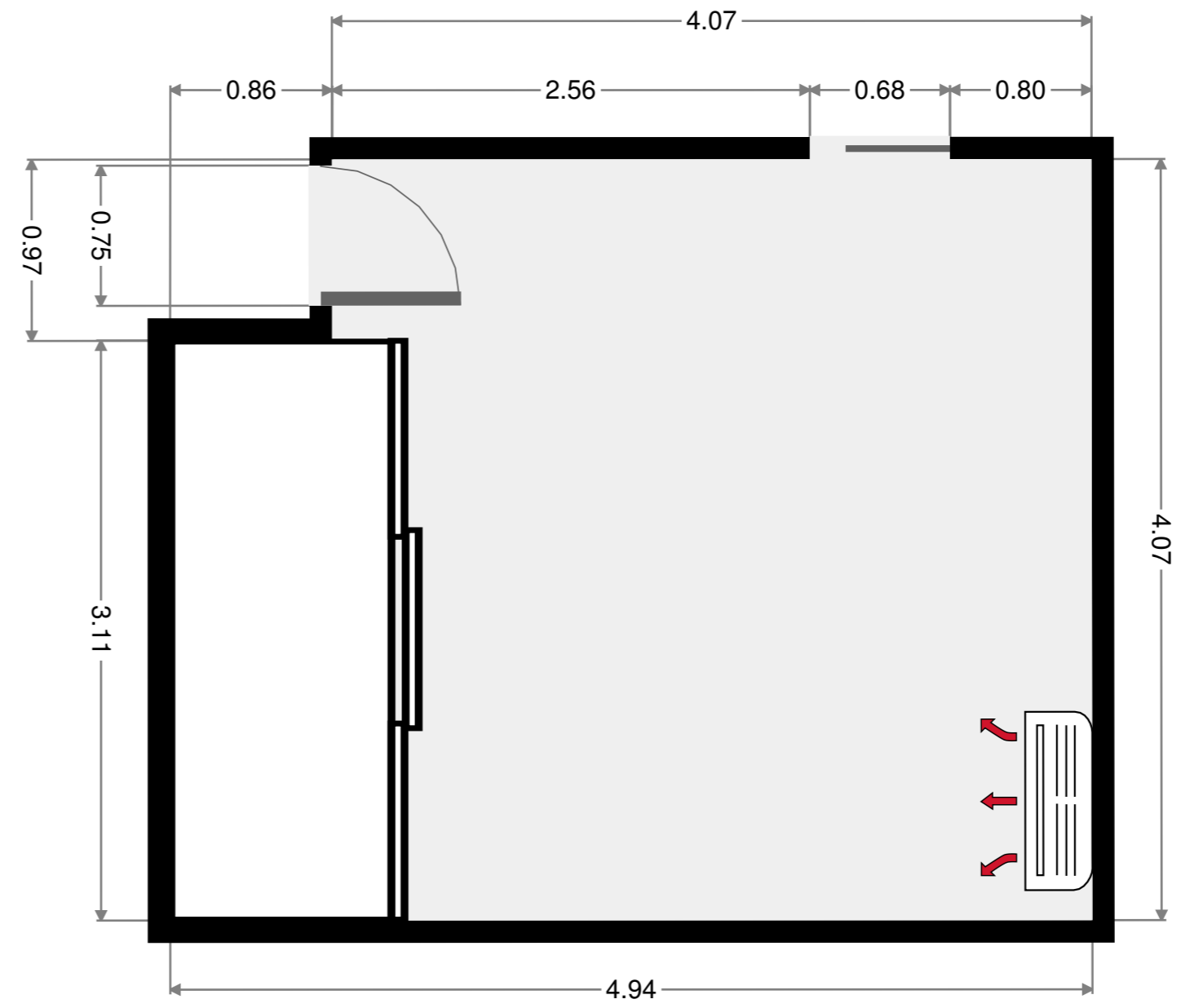
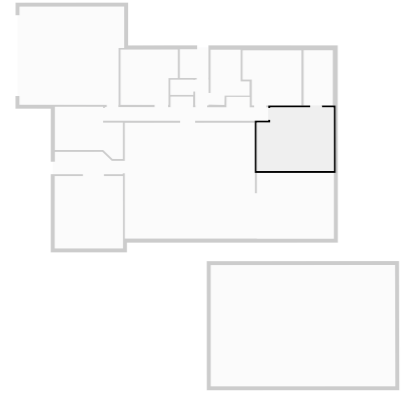
Bathroom

Width: 1.86 m
Length: 3.54 m
Area: 6.63 m²
Perimeter: 10.83 m



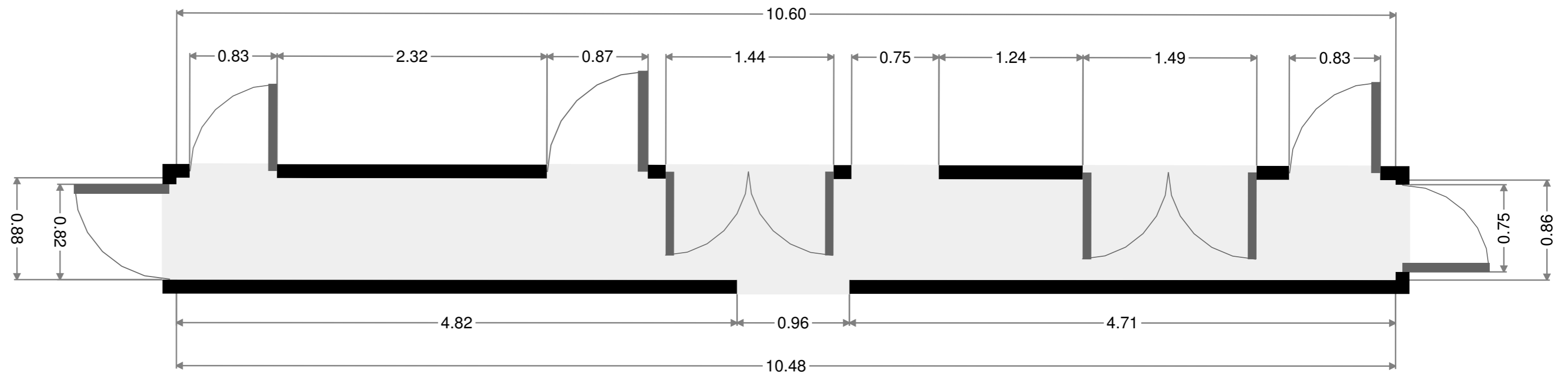
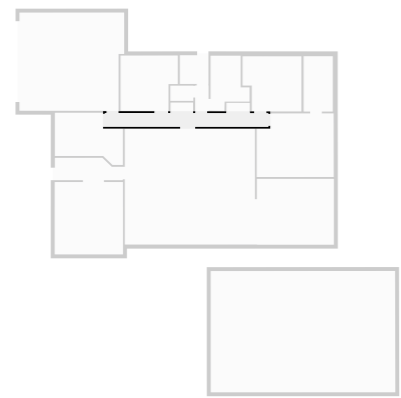
Master Bedroom

Width: 4.07 m
 Length: 4.94 m
 Area: 19.25 m²
 Perimeter: 18.01 m
 Ceiling Height: 2.17 m

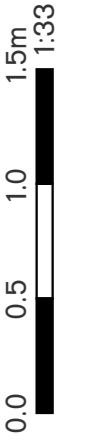


Hall

Width: 0.88 m
 Length: 10.48 m
 Area: 9.09 m²
 Perimeter: 22.68 m

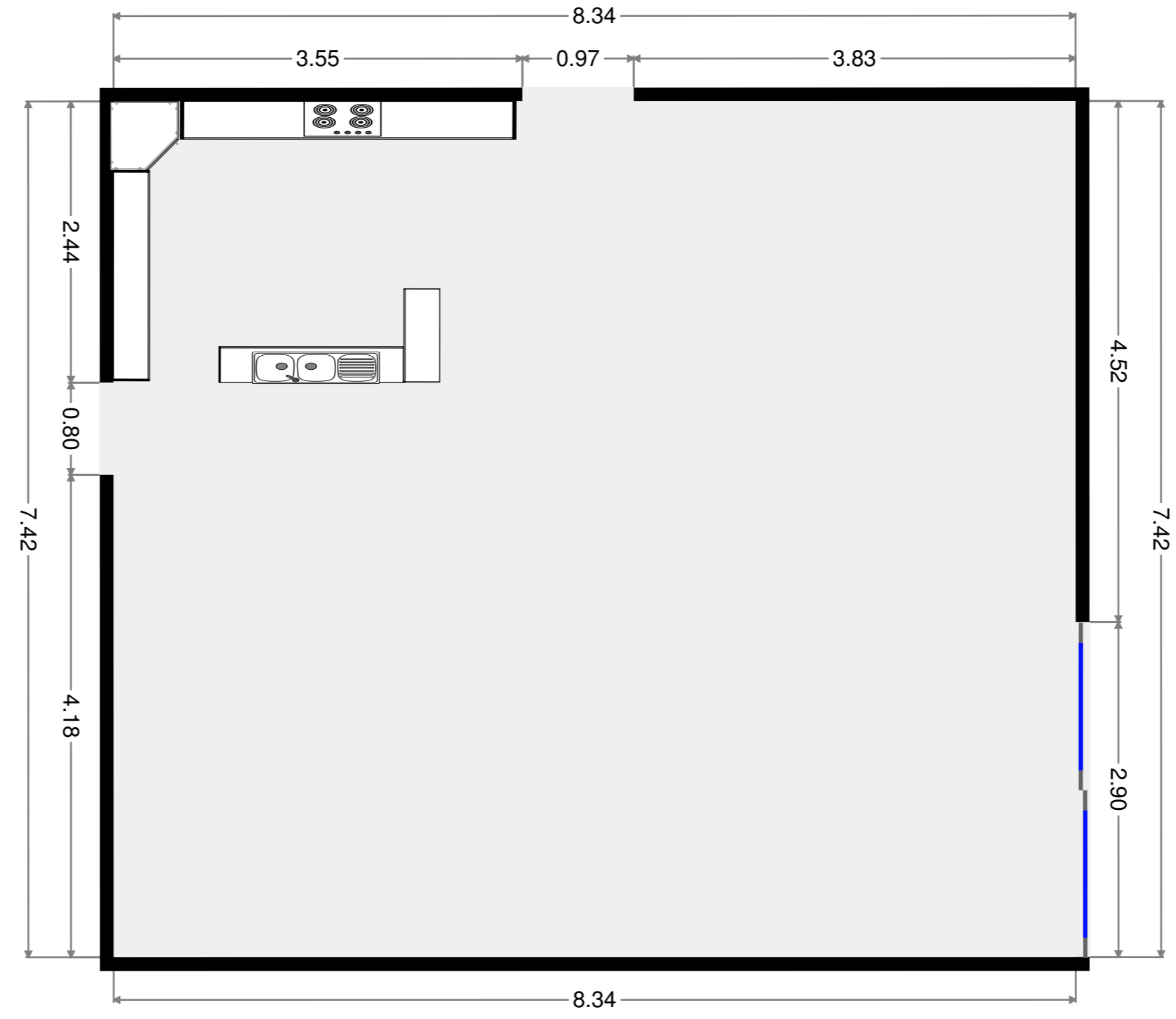
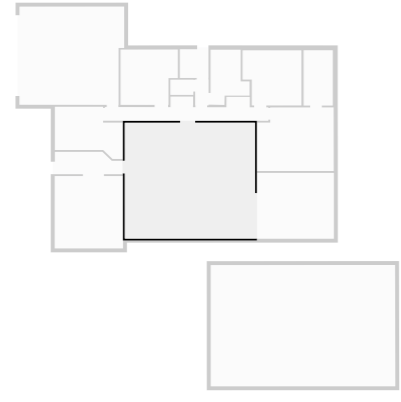


THIS FLOORPLAN IS PROVIDED WITHOUT WARRANTY OF ANY KIND. RAY WHITE ROCKHAMPTON DISCLAIMS ANY WARRANTY, INCLUDING, WITHOUT LIMITATION, SATISFACTORY QUALITY OR ACCURACY OF DIMENSIONS. ALL CARE IS TAKEN TO ENSURE ACCURACY BUT MEASUREMENTS, POSITIONING AND PLACEMENTS CANNOT BE GUARANTEED.



Kitchen

Width: 7.42 m
 Length: 8.34 m
 Area: 61.88 m²
 Perimeter: 31.52 m



Media Room

Width: 4.38 m
 Length: 4.64 m
 Area: 20.29 m²
 Perimeter: 18.03 m

