

3 EMERY STREET

SUBMITTED BY

Ray White Rockhampton Casey
stockers@rwoz.com

CREATED ON

2022-07-18

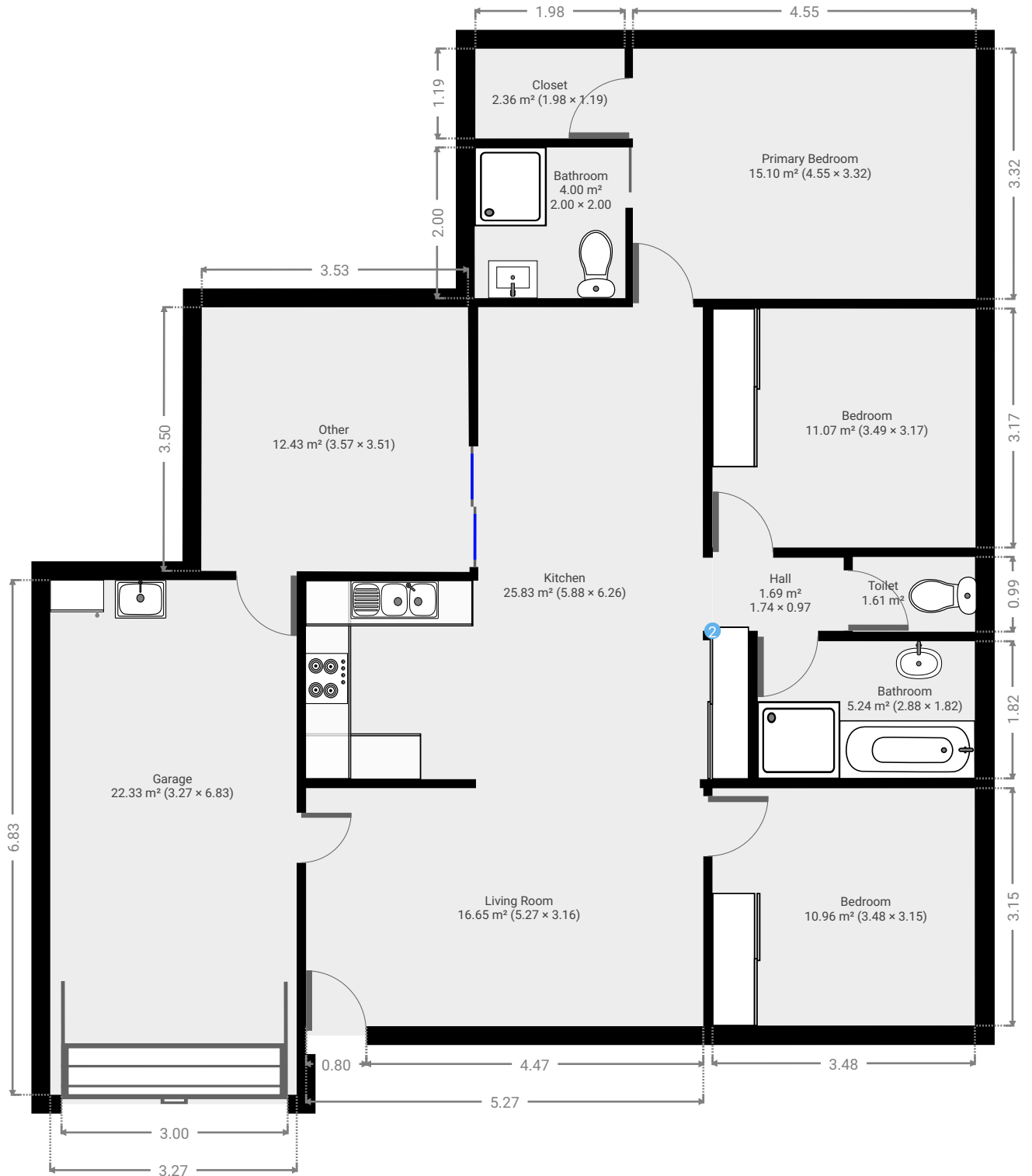
Floors

1

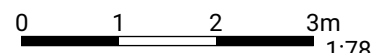
3 EMERY COURT

FLOORS: 1

▼ Ground Floor



THIS FLOORPLAN IS PROVIDED WITHOUT WARRANTY OF ANY KIND. SENSOPIA DISCLAIMS ANY WARRANTY INCLUDING, WITHOUT LIMITATION, SATISFACTORY QUALITY OR ACCURACY OF DIMENSIONS.

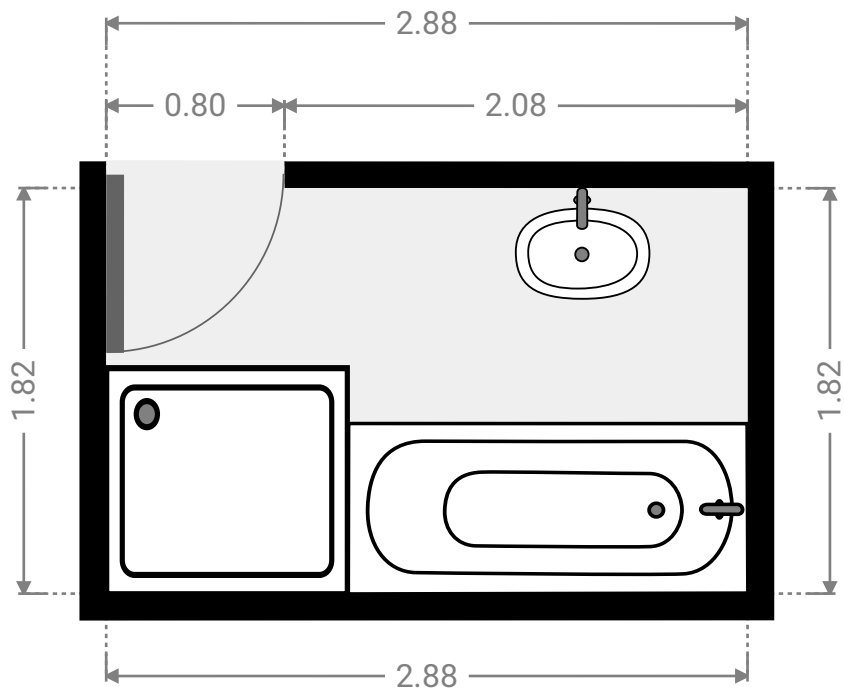
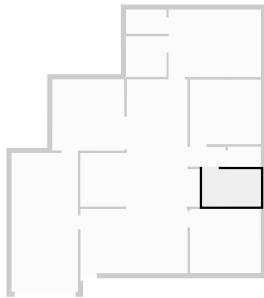


3 EMERY COURT

FLOORS: 1

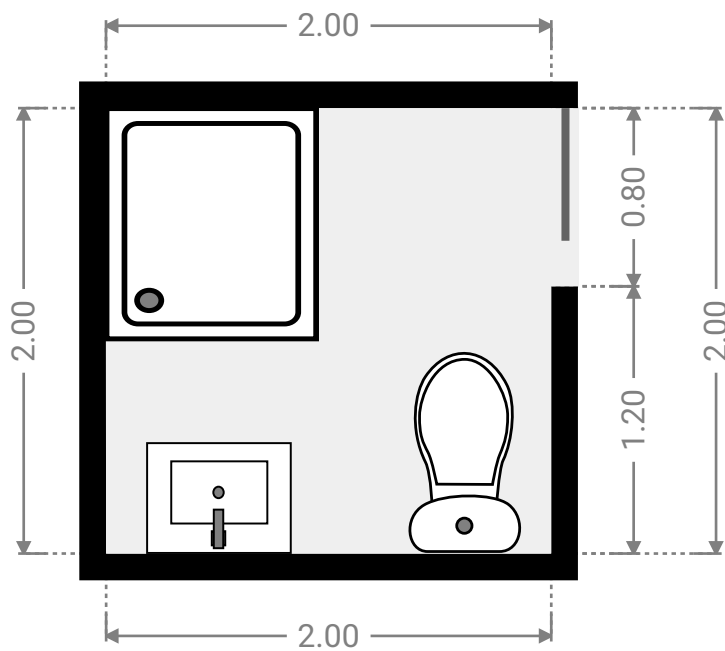
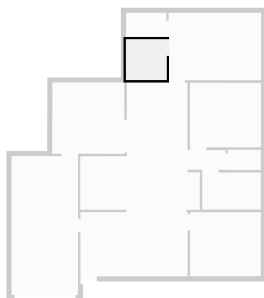
▼ Bathroom Ground Floor

WIDTH: 2.88 m • LENGTH: 1.82 m
AREA: 5.24 m² • PERIMETER: 9.40 m



▼ Bathroom Ground Floor

WIDTH: 2.00 m • LENGTH: 2.00 m
AREA: 4.00 m² • PERIMETER: 8.00 m

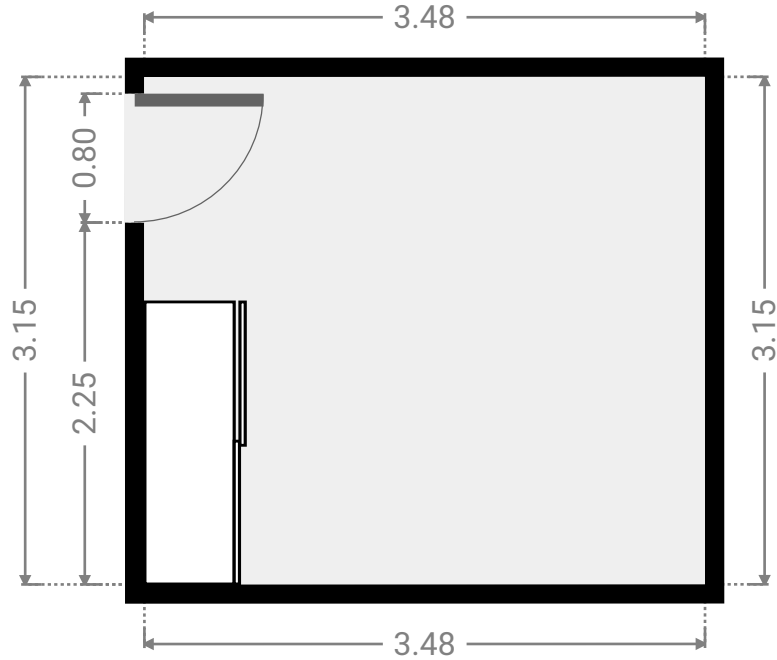
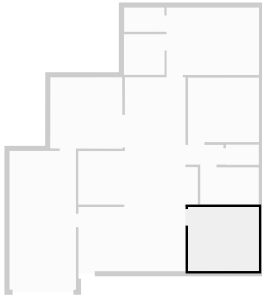


3 EMERY COURT

FLOORS: 1

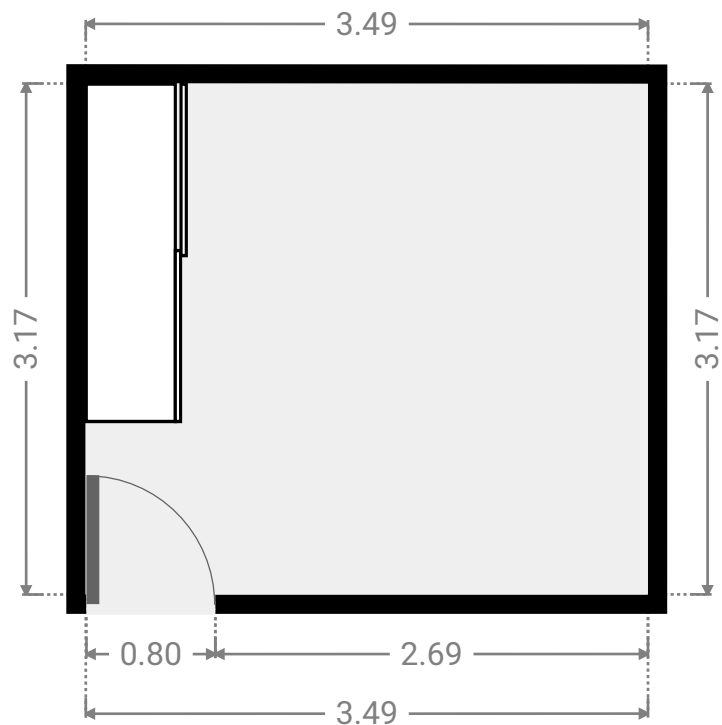
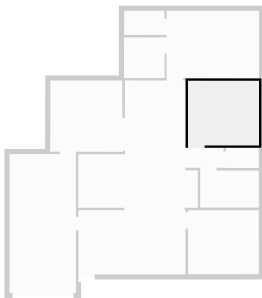
▼ Bedroom Ground Floor

WIDTH: 3.48 m • LENGTH: 3.15 m
AREA: 10.96 m² • PERIMETER: 13.26 m



▼ Bedroom Ground Floor

WIDTH: 3.49 m • LENGTH: 3.17 m
AREA: 11.07 m² • PERIMETER: 13.32 m



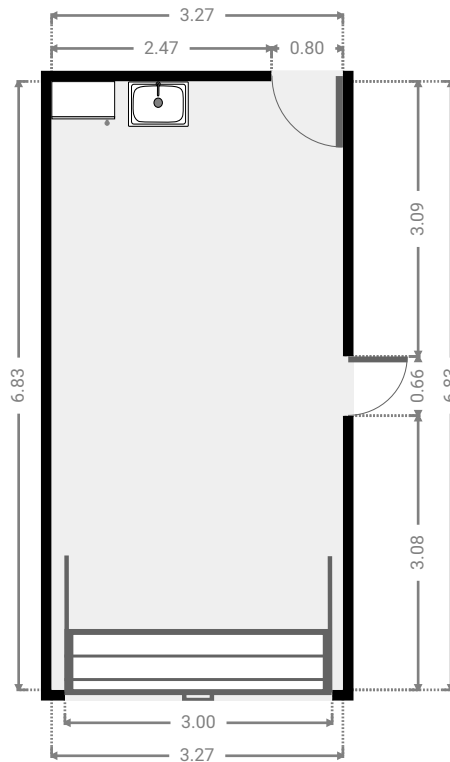
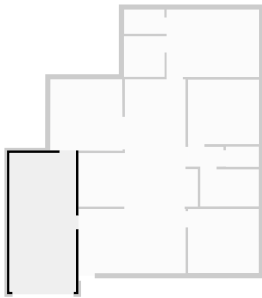
3 EMERY COURT

FLOORS: 1



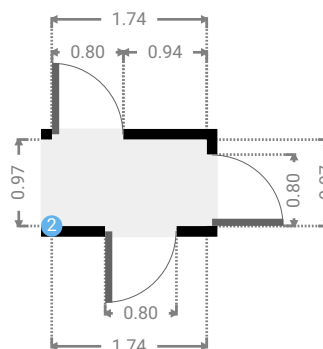
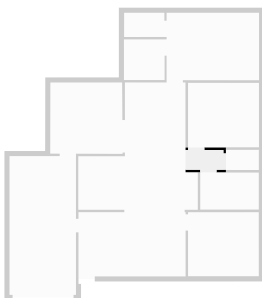
▼ Garage Ground Floor

WIDTH: 3.27 m • LENGTH: 6.83 m
AREA: 22.33 m² • PERIMETER: 20.20 m



▼ Hall Ground Floor

WIDTH: 1.74 m • LENGTH: 0.97 m
AREA: 1.69 m² • PERIMETER: 5.42 m



▼ Hall/Ground Floor

2 OPENING

Height
0.00 m

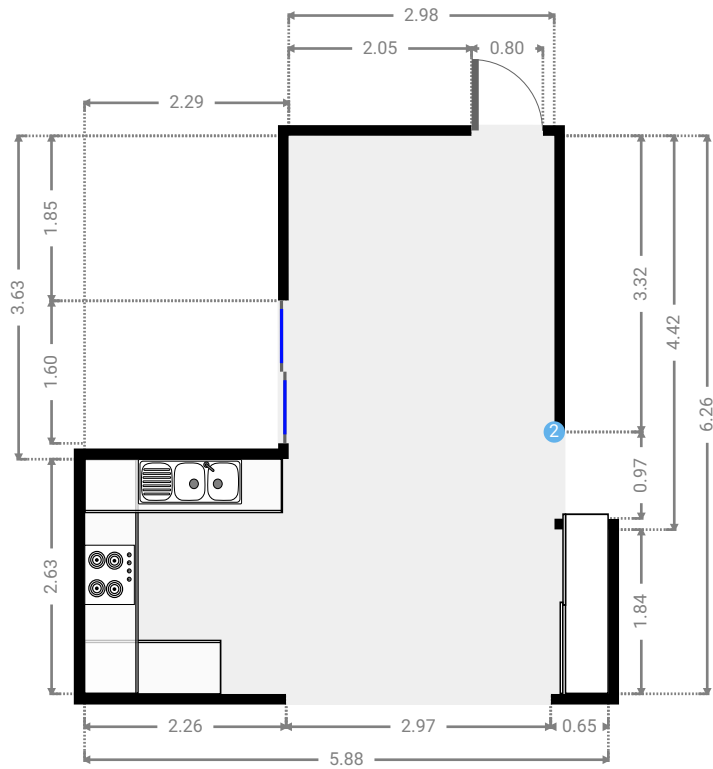
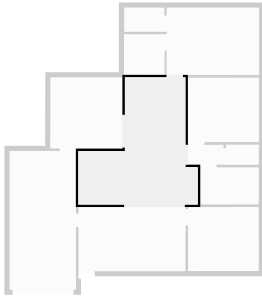


3 EMERY COURT

FLOORS: 1

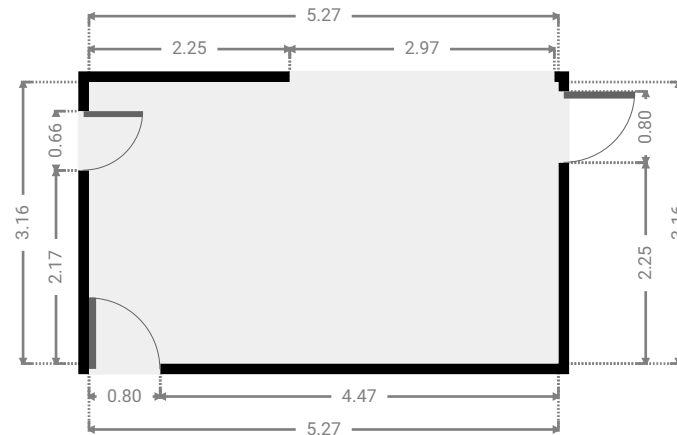
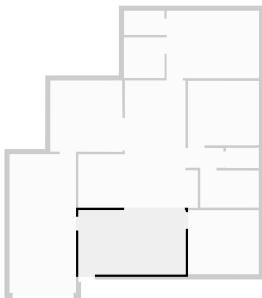
▼ Kitchen Ground Floor

WIDTH: 5.88 m • LENGTH: 6.26 m
AREA: 25.83 m² • PERIMETER: 24.29 m



▼ Living Room Ground Floor

WIDTH: 5.27 m • LENGTH: 3.16 m
AREA: 16.65 m² • PERIMETER: 16.86 m



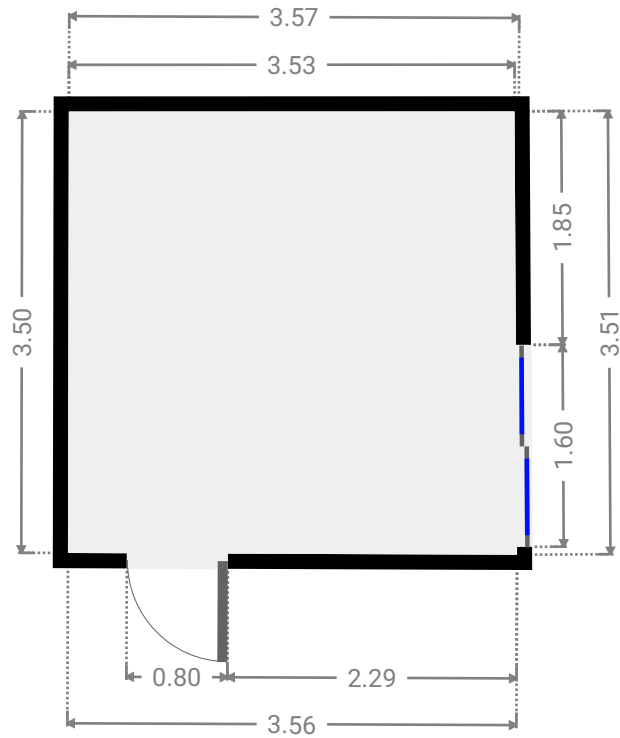
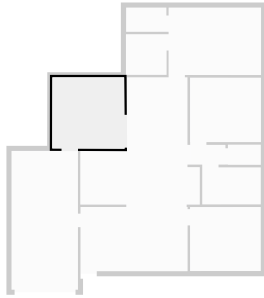
3 EMERY COURT

FLOORS: 1



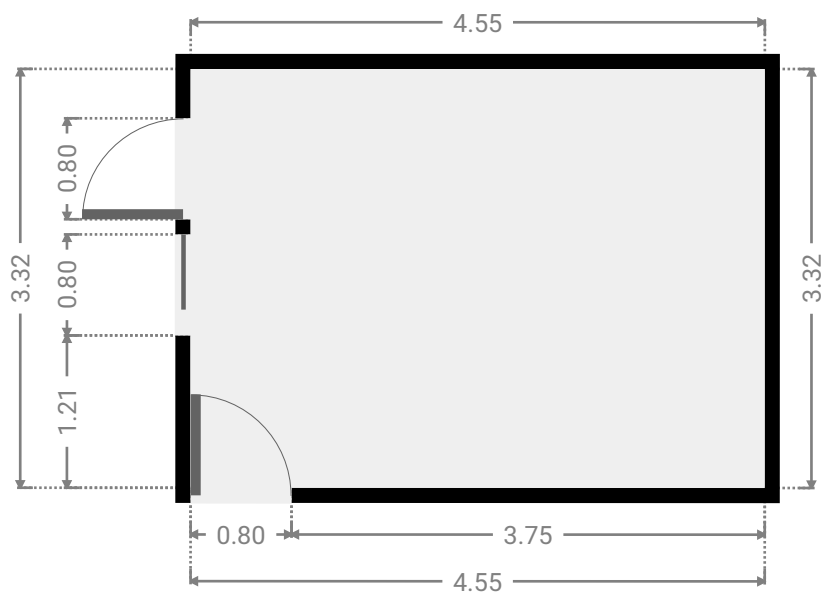
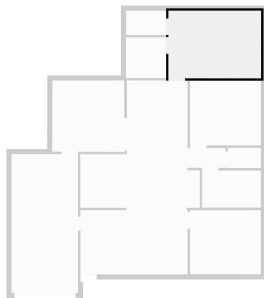
▼ Other Ground Floor

WIDTH: 3.57 m • LENGTH: 3.51 m
AREA: 12.43 m² • PERIMETER: 14.10 m



▼ Primary Bedroom Ground Floor

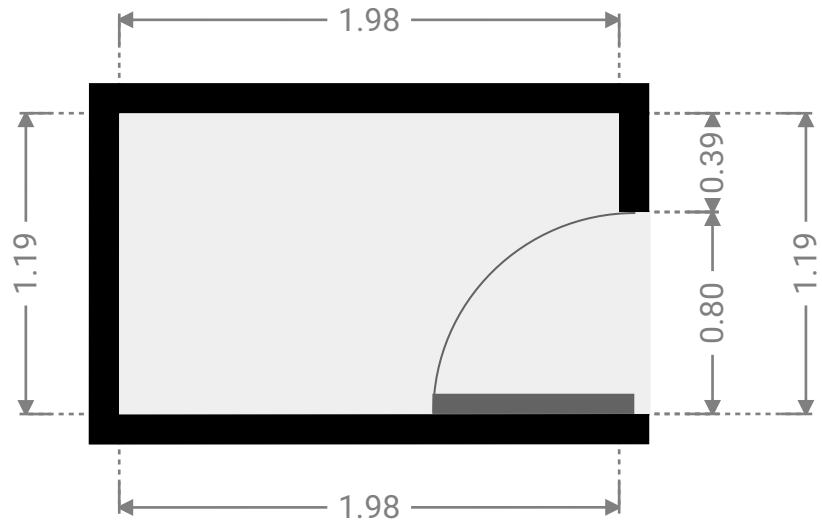
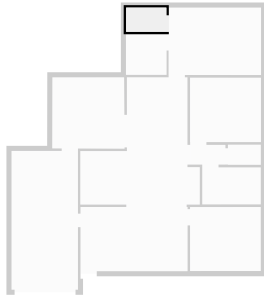
WIDTH: 4.55 m • LENGTH: 3.32 m
AREA: 15.10 m² • PERIMETER: 15.74 m



FLOORS: 1

▼ Closet Ground Floor

WIDTH: 1.98 m • LENGTH: 1.19 m
AREA: 2.36 m² • PERIMETER: 6.34 m



▼ Toilet Ground Floor

WIDTH: 1.62 m • LENGTH: 0.99 m
AREA: 1.61 m² • PERIMETER: 5.22 m

