

3 Broughton Street

Created on
2021-03-29

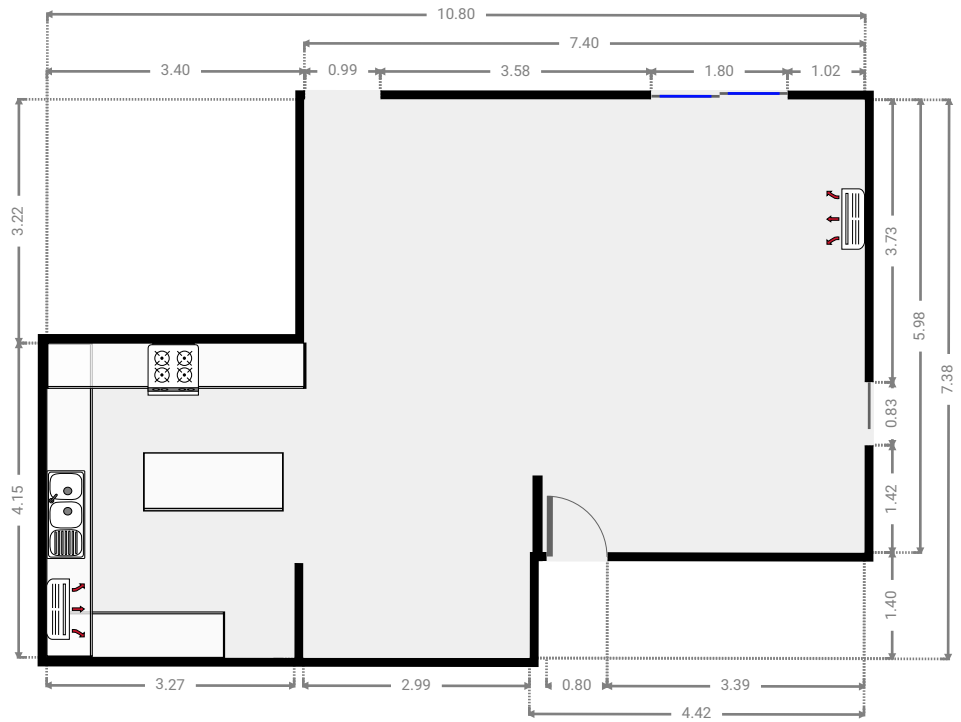
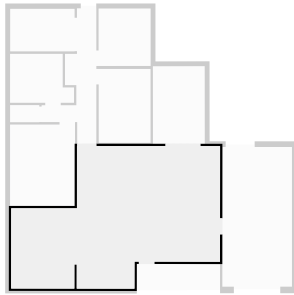
Floors
1

▼ Ground Floor



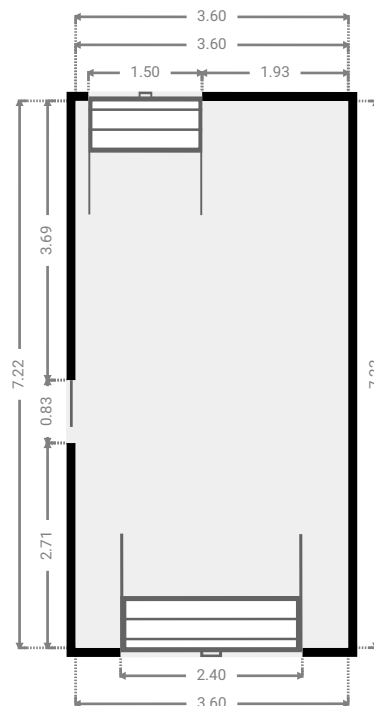
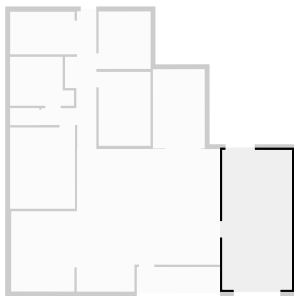
▼ Living/Dining/Kitchen Ground Floor

WIDTH: 10.80 m • LENGTH: 7.38 m
AREA: 62.34 m² • PERIMETER: 38.85 m



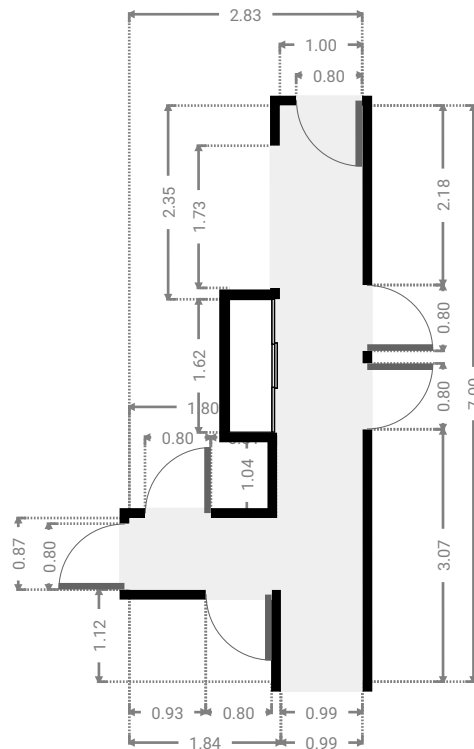
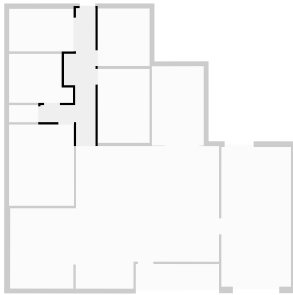
▼ Garage Ground Floor

WIDTH: 3.60 m • LENGTH: 7.22 m
AREA: 26.00 m² • PERIMETER: 21.64 m



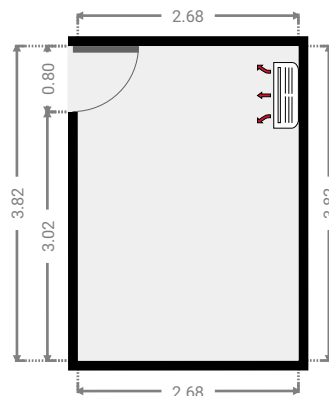
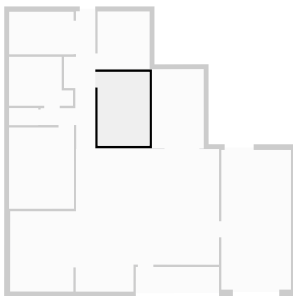
▼ Hall Ground Floor

WIDTH: 2.83 m • LENGTH: 7.00 m
AREA: 9.62 m² • PERIMETER: 20.83 m



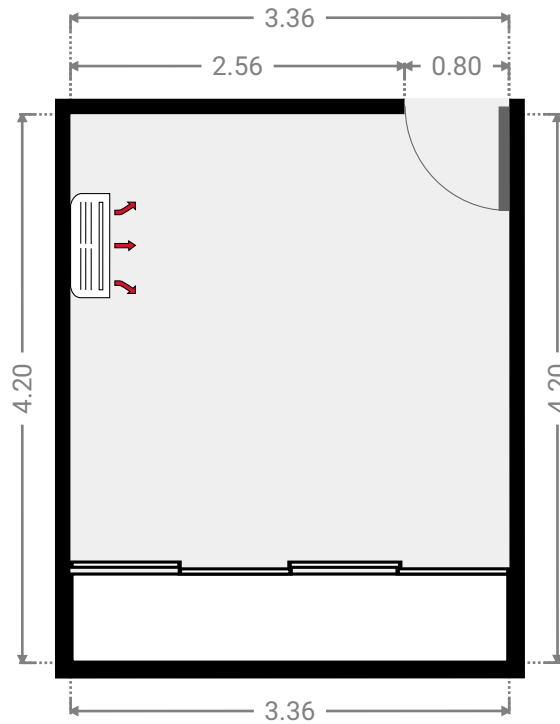
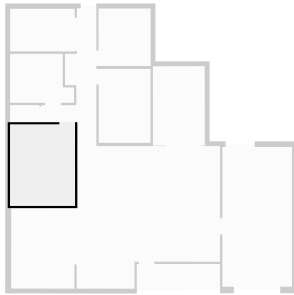
▼ Bedroom Ground Floor

WIDTH: 2.68 m • LENGTH: 3.82 m
AREA: 10.24 m² • PERIMETER: 13.00 m



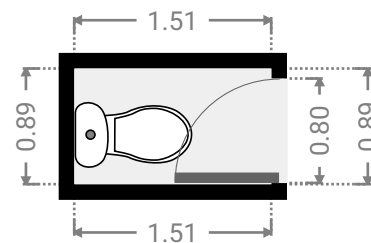
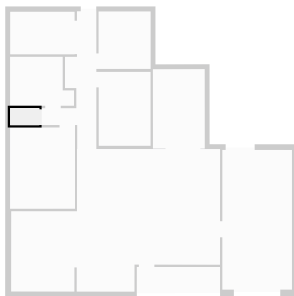
▼ **Master Bedroom**
Ground Floor

WIDTH: 3.36 m • LENGTH: 4.20 m
AREA: 14.11 m² • PERIMETER: 15.12 m



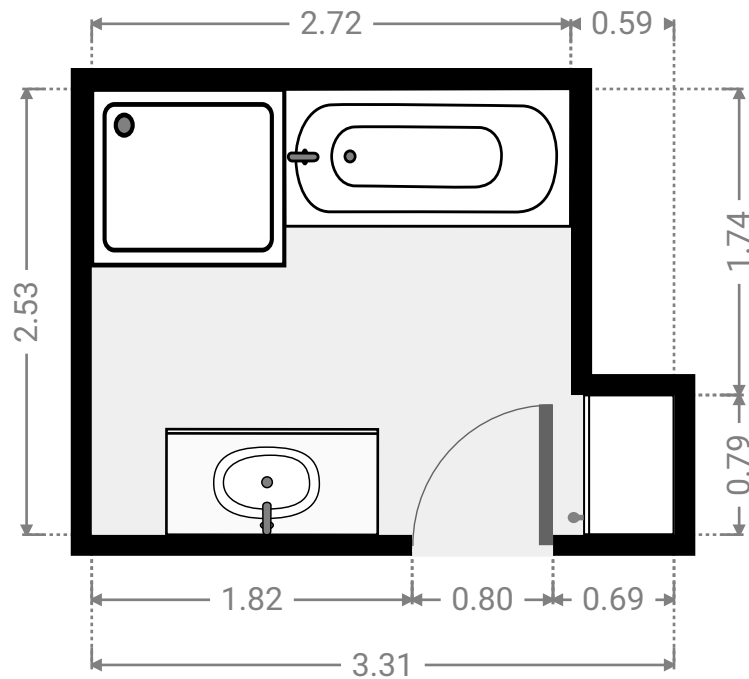
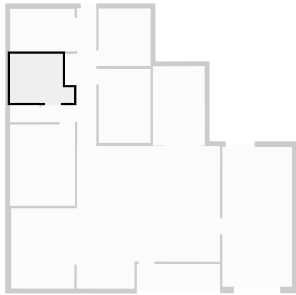
▼ **Toilet**
Ground Floor

WIDTH: 1.51 m • LENGTH: 0.89 m
AREA: 1.34 m² • PERIMETER: 4.79 m



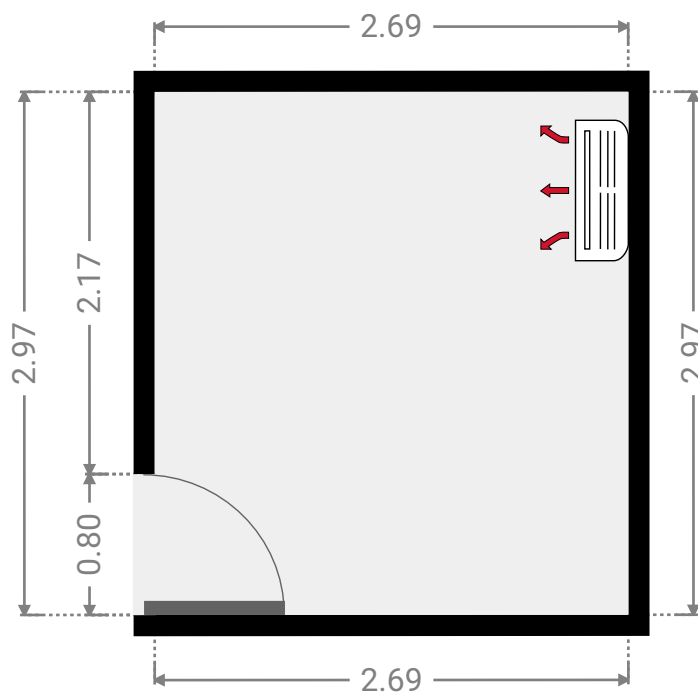
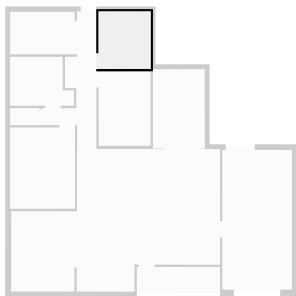
▼ **Bathroom**
Ground Floor

WIDTH: 3.31 m • LENGTH: 2.53 m
AREA: 7.35 m² • PERIMETER: 11.68 m



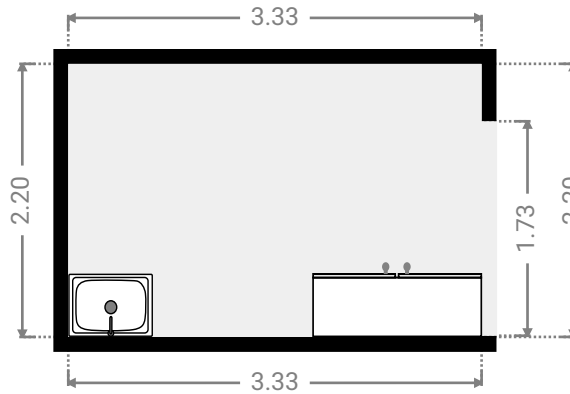
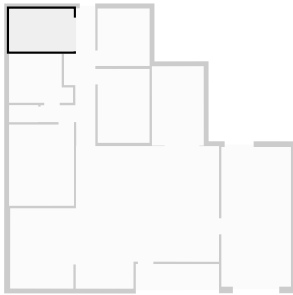
▼ **Bedroom**
Ground Floor

WIDTH: 2.69 m • LENGTH: 2.97 m
AREA: 7.99 m² • PERIMETER: 11.32 m



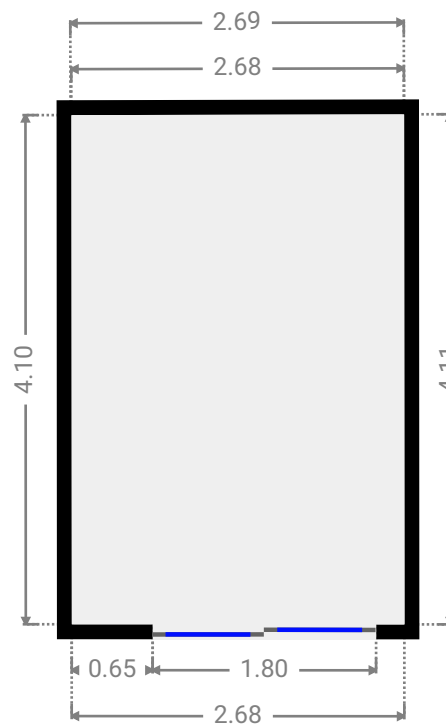
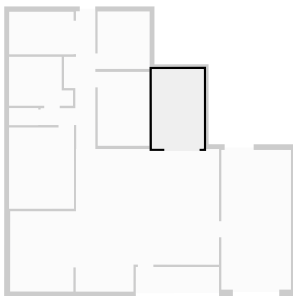
▼ Laundry Room Ground Floor

WIDTH: 3.33 m • LENGTH: 2.20 m
AREA: 7.33 m² • PERIMETER: 11.06 m



▼ Patio Ground Floor

WIDTH: 2.69 m • LENGTH: 4.11 m
AREA: 11.00 m² • PERIMETER: 13.57 m



▼ Other
Ground Floor

WIDTH: 4.30 m • LENGTH: 1.23 m
AREA: 5.26 m² • PERIMETER: 11.05 m

