

# 3 Brigalow Avenue

**SUBMITTED BY**

Ray White Rockhampton Casey  
stockers@cqoz.com

---

**CREATED ON**

2022-02-28

---

**Floors**

1

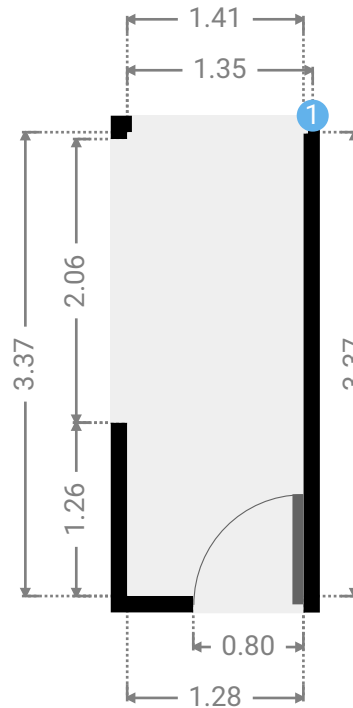
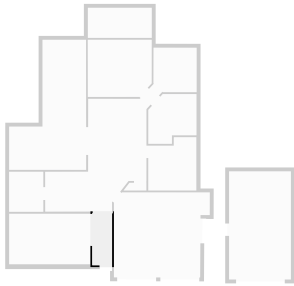
---

## ▼ Ground Floor



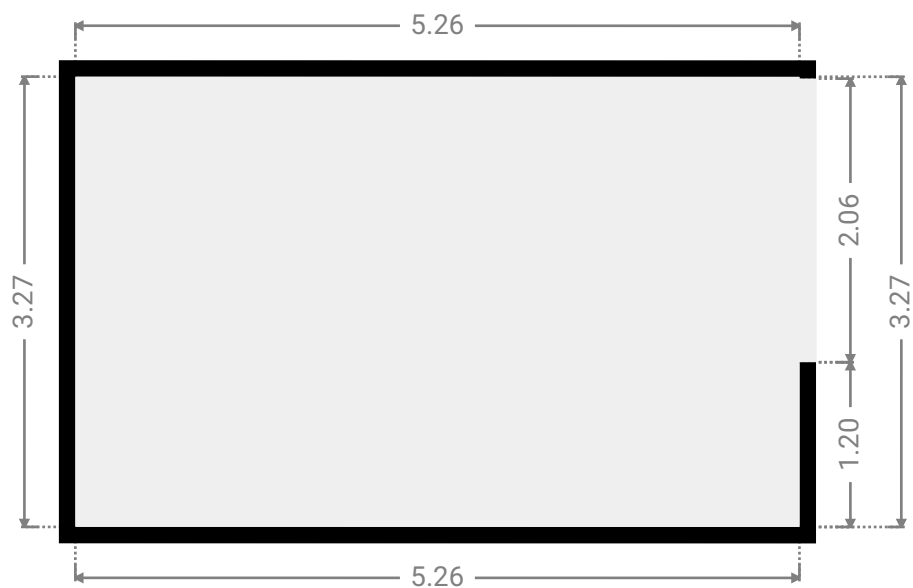
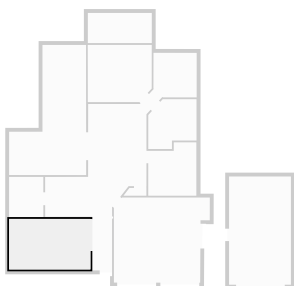
## ▼ Hall Ground Floor

WIDTH: 1.28 m • LENGTH: 3.37 m  
AREA: 4.31 m<sup>2</sup> • PERIMETER: 9.30 m



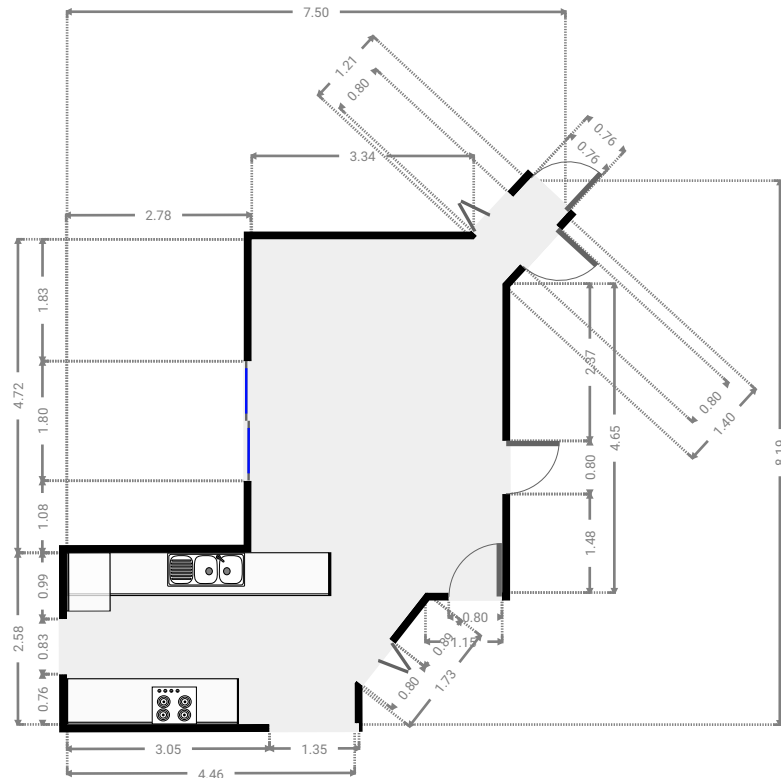
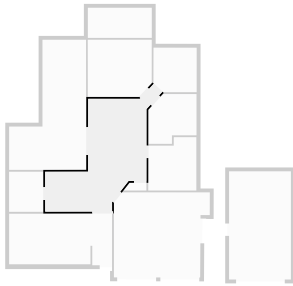
## ▼ Living Room Ground Floor

WIDTH: 5.26 m • LENGTH: 3.27 m  
AREA: 17.20 m<sup>2</sup> • PERIMETER: 17.06 m



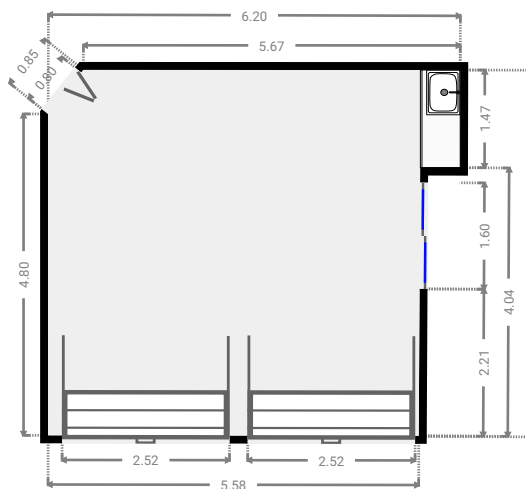
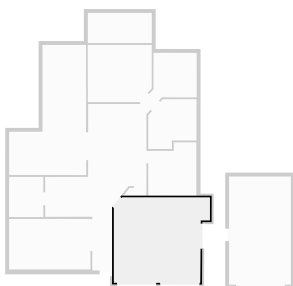
## ▼ Kitchen Ground Floor

WIDTH: 7.50 m • LENGTH: 8.19 m  
AREA: 31.87 m<sup>2</sup> • PERIMETER: 29.27 m



## ▼ Garage Ground Floor

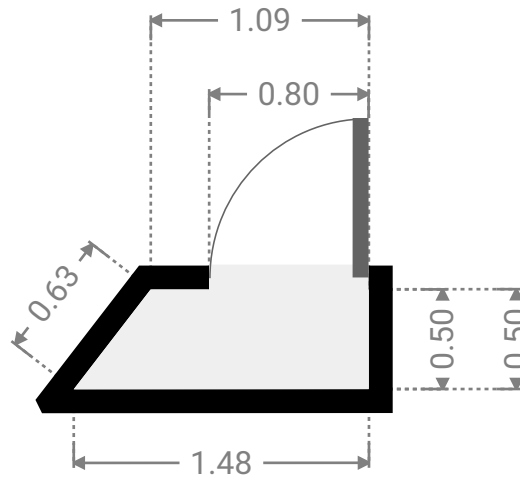
WIDTH: 6.20 m • LENGTH: 5.51 m  
AREA: 31.50 m<sup>2</sup> • PERIMETER: 23.05 m



FLOORS: 1

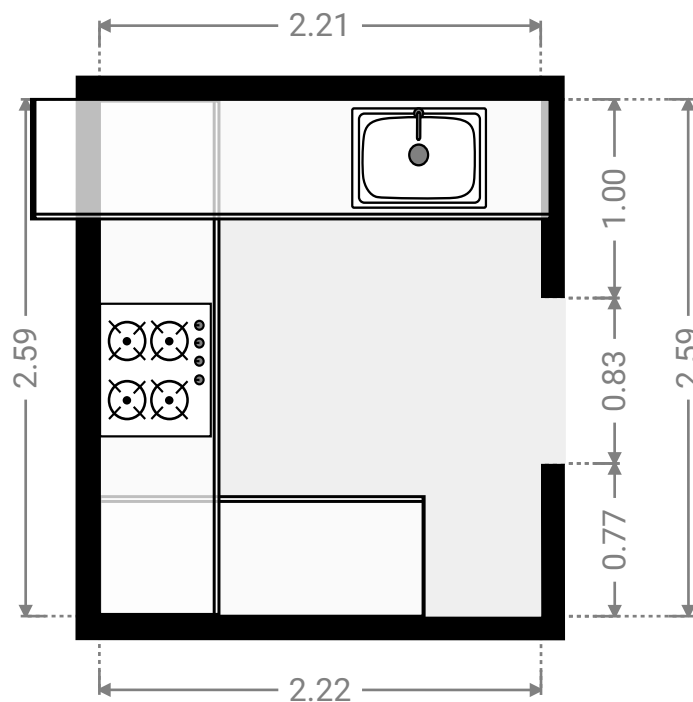
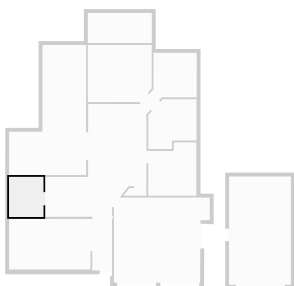
▼ Closet  
Ground Floor

WIDTH: 1.48 m • LENGTH: 0.50 m  
AREA: 0.64 m<sup>2</sup> • PERIMETER: 3.71 m



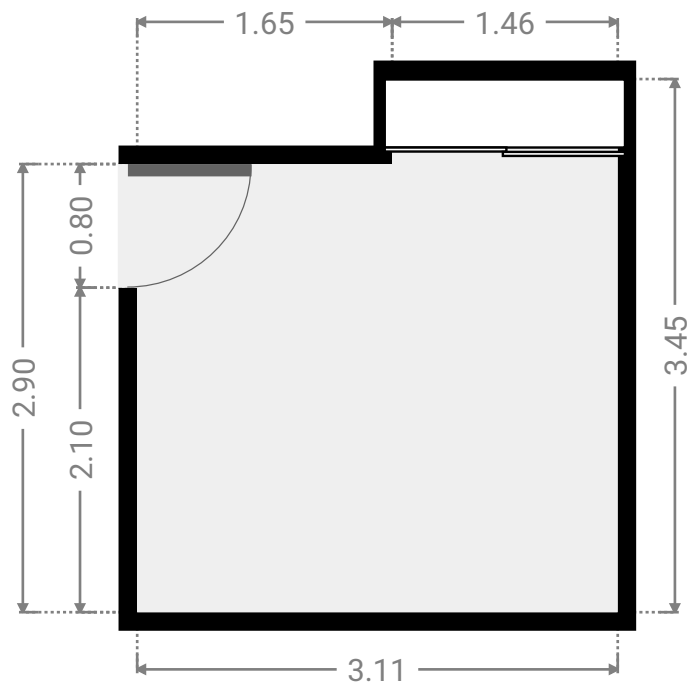
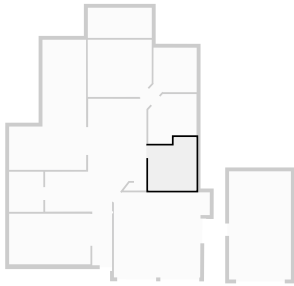
▼ Kitchen  
Ground Floor

WIDTH: 2.22 m • LENGTH: 2.59 m  
AREA: 5.75 m<sup>2</sup> • PERIMETER: 9.62 m



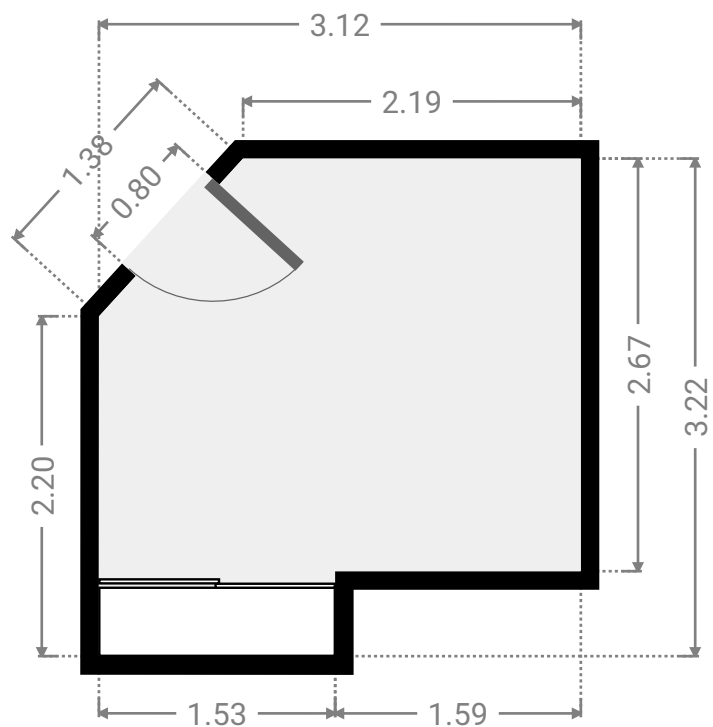
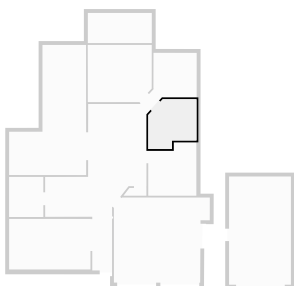
▼ **Bedroom**  
Ground Floor

WIDTH: 3.11 m • LENGTH: 3.45 m  
AREA: 9.82 m<sup>2</sup> • PERIMETER: 13.12 m



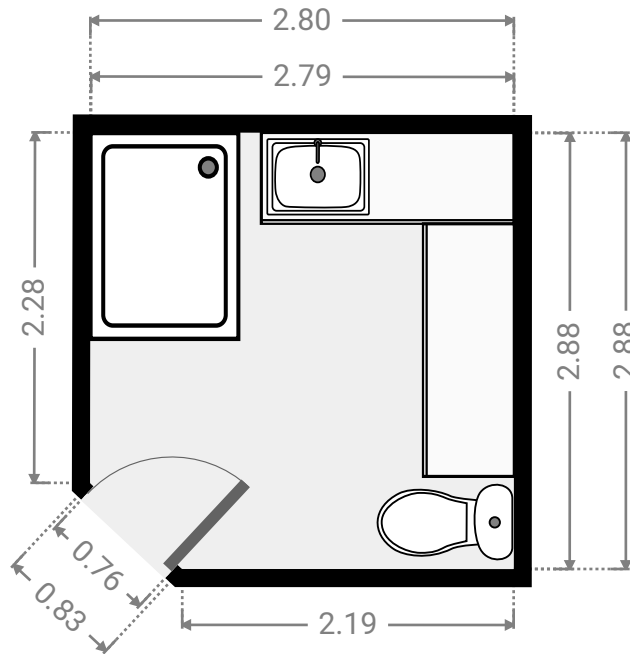
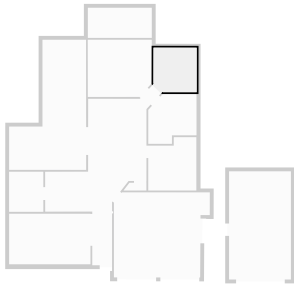
▼ **Bedroom**  
Ground Floor

WIDTH: 3.12 m • LENGTH: 3.22 m  
AREA: 8.69 m<sup>2</sup> • PERIMETER: 12.11 m



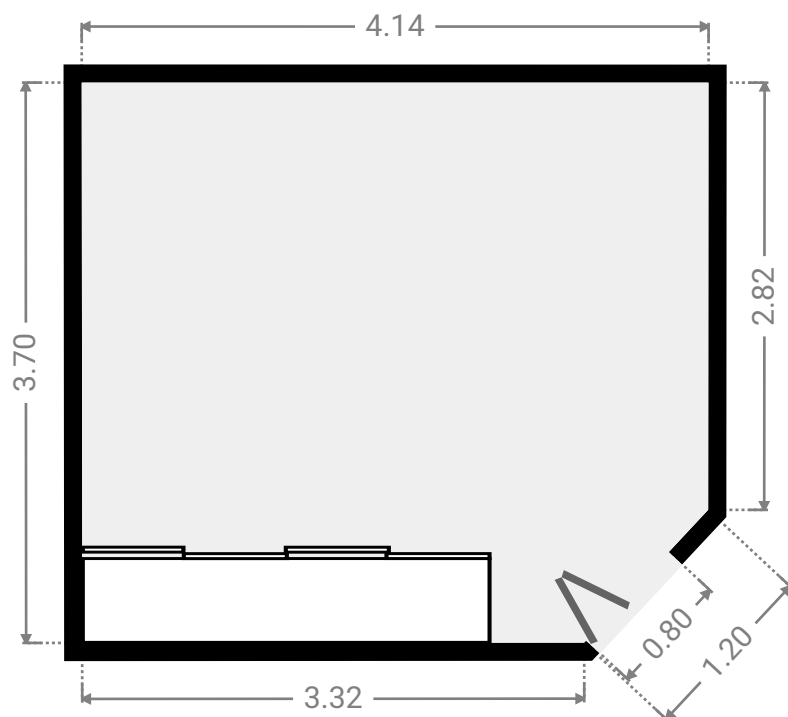
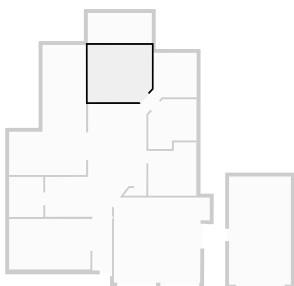
▼ **Bathroom**  
Ground Floor

WIDTH: 2.80 m • LENGTH: 2.88 m  
AREA: 7.88 m<sup>2</sup> • PERIMETER: 11.00 m



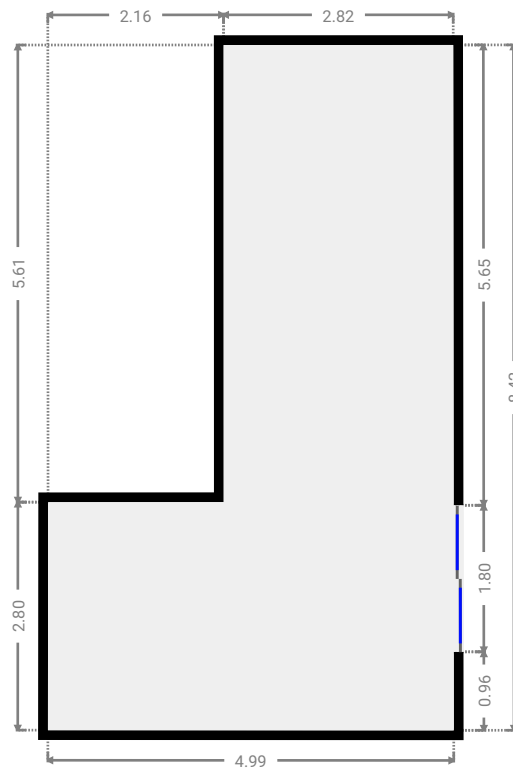
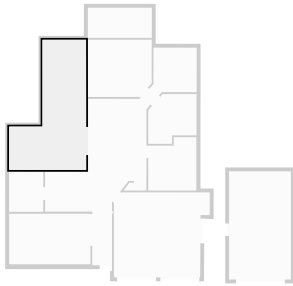
▼ **Primary Bedroom**  
Ground Floor

WIDTH: 4.14 m • LENGTH: 3.70 m  
AREA: 14.94 m<sup>2</sup> • PERIMETER: 15.18 m



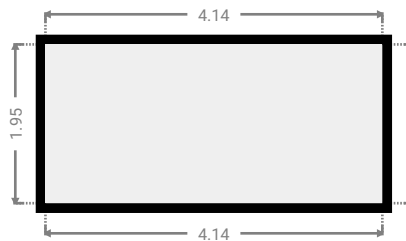
▼ Other  
Ground Floor

WIDTH: 4.99 m • LENGTH: 8.42 m  
AREA: 29.81 m<sup>2</sup> • PERIMETER: 26.80 m



▼ Other  
Ground Floor

WIDTH: 4.14 m • LENGTH: 1.95 m  
AREA: 8.07 m<sup>2</sup> • PERIMETER: 12.18 m





## ▼ Garage Ground Floor

WIDTH: 4.00 m • LENGTH: 7.00 m  
AREA: 28.00 m<sup>2</sup> • PERIMETER: 22.00 m

