

# 3 Bertram Street

**SUBMITTED BY**

Ray White Rockhampton Casey  
stockers@cqoz.com

---

**CREATED ON**

2021-12-13

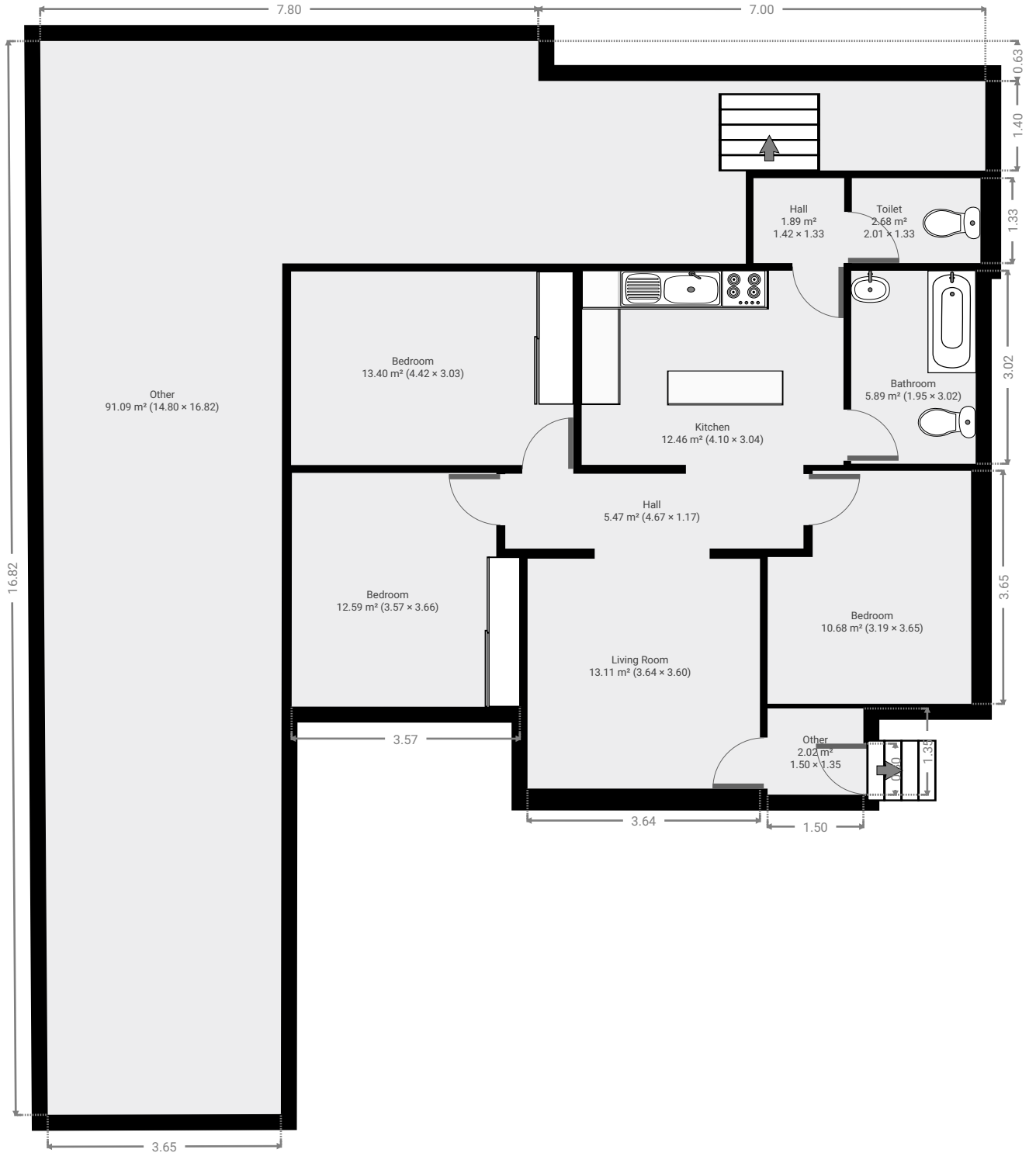
---

**Floors**

1

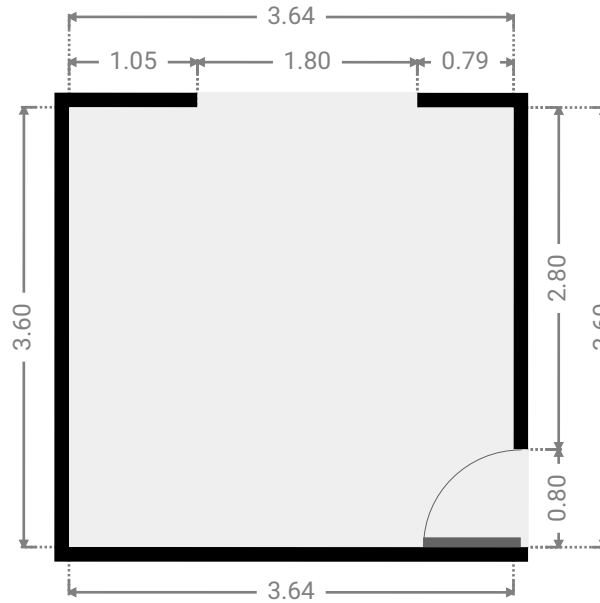
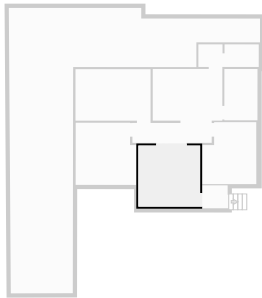
---

## ▼ Ground Floor



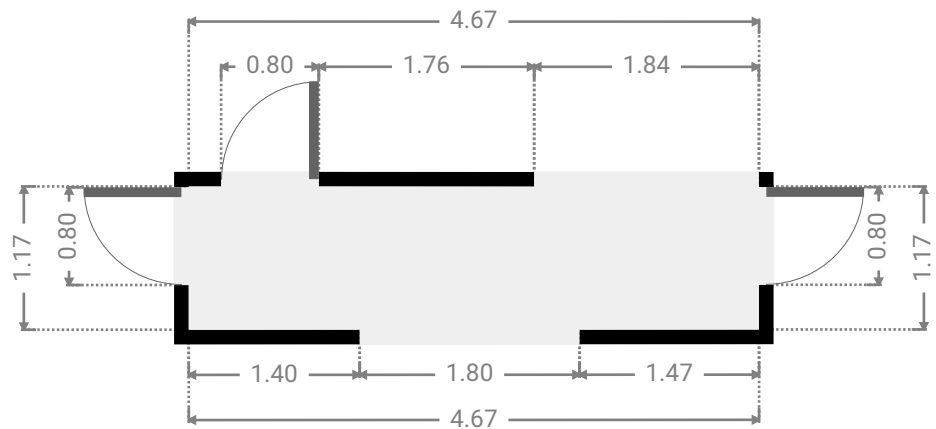
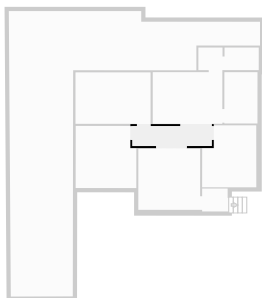
▼ **Living Room**  
Ground Floor

WIDTH: 3.64 m • LENGTH: 3.60 m  
AREA: 13.11 m<sup>2</sup> • PERIMETER: 14.48 m



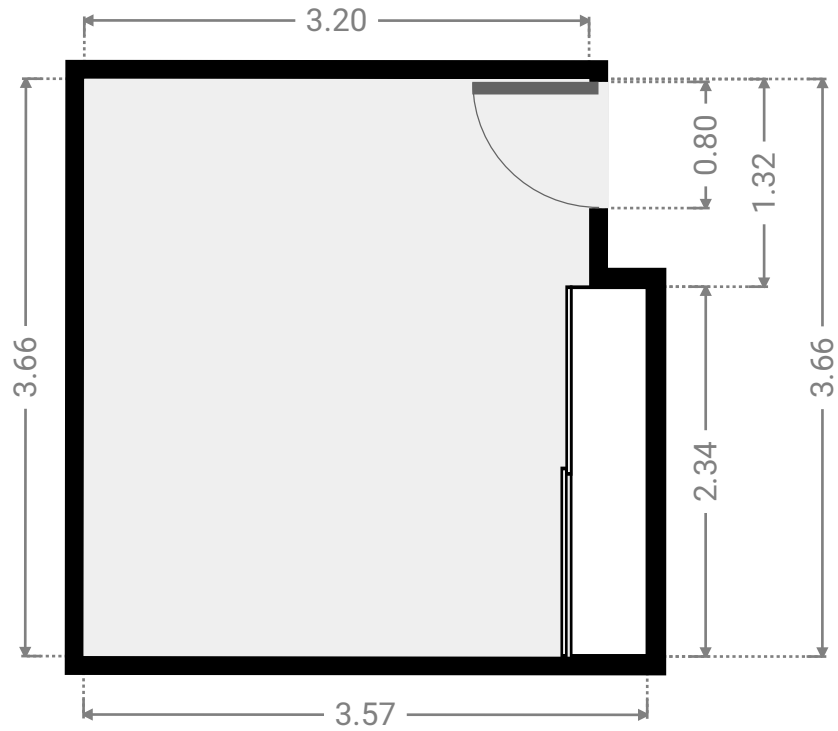
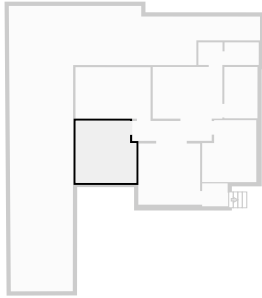
▼ **Hall**  
Ground Floor

WIDTH: 4.67 m • LENGTH: 1.17 m  
AREA: 5.47 m<sup>2</sup> • PERIMETER: 11.68 m



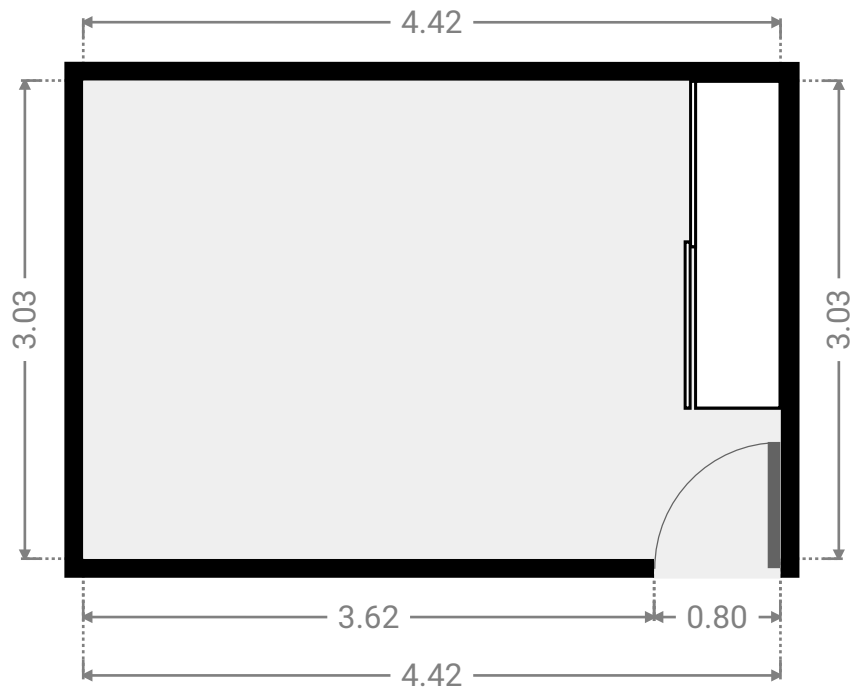
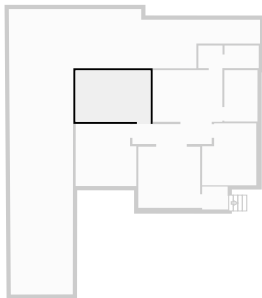
▼ **Bedroom**  
Ground Floor

WIDTH: 3.57 m • LENGTH: 3.66 m  
AREA: 12.59 m<sup>2</sup> • PERIMETER: 14.46 m



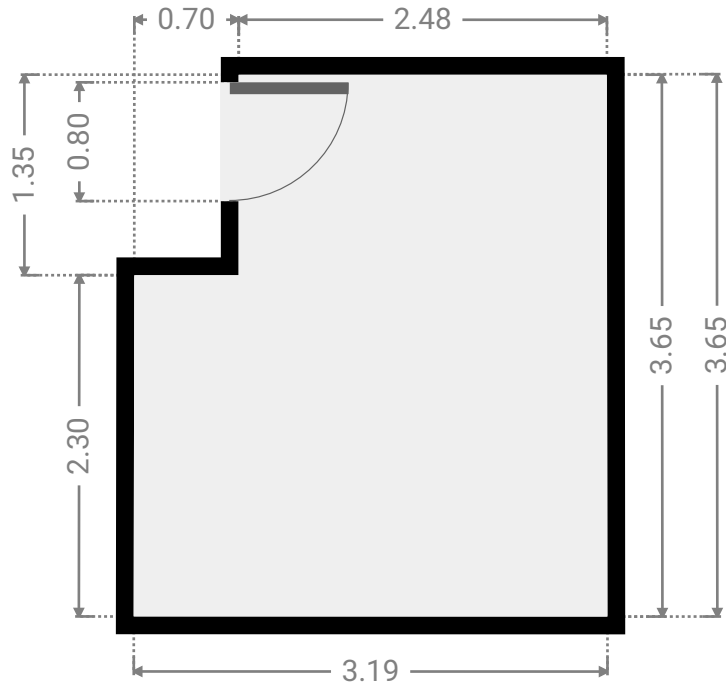
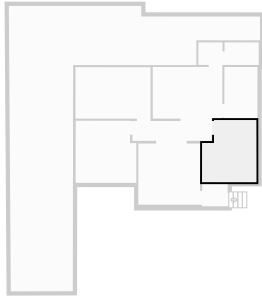
▼ **Bedroom**  
Ground Floor

WIDTH: 4.42 m • LENGTH: 3.03 m  
AREA: 13.40 m<sup>2</sup> • PERIMETER: 14.90 m



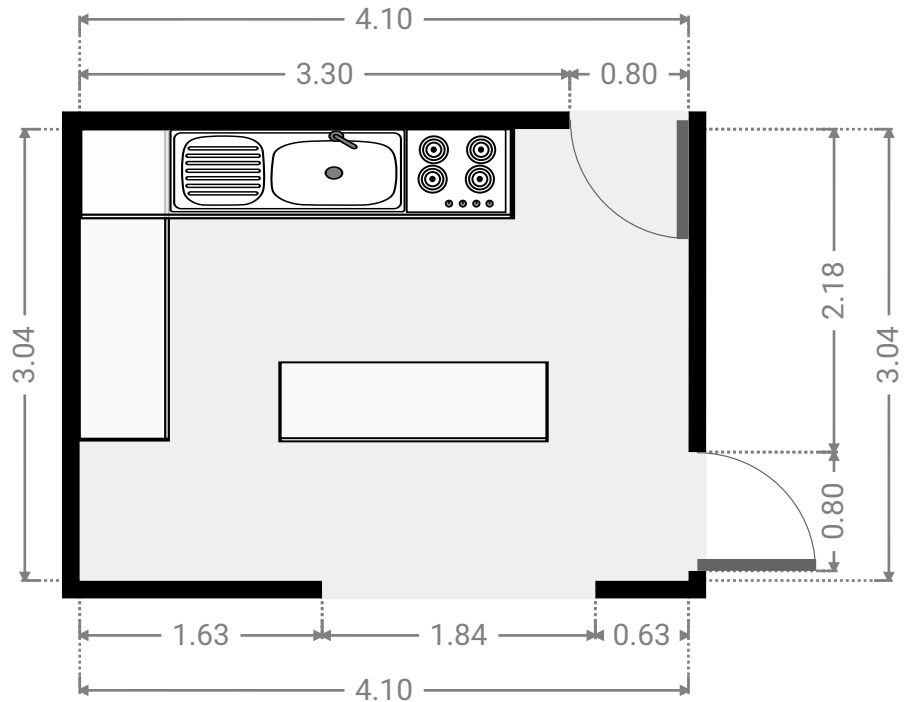
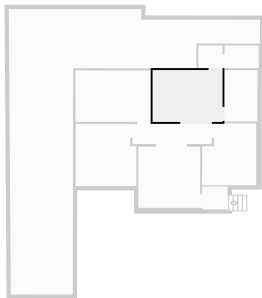
▼ **Bedroom**  
Ground Floor

WIDTH: 3.19 m • LENGTH: 3.65 m  
AREA: 10.68 m<sup>2</sup> • PERIMETER: 13.67 m



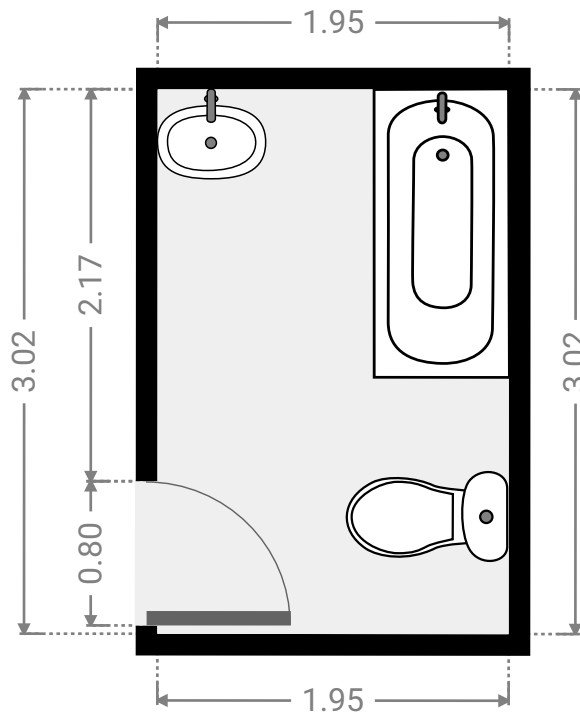
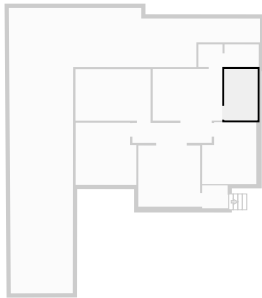
▼ **Kitchen**  
Ground Floor

WIDTH: 4.10 m • LENGTH: 3.04 m  
AREA: 12.46 m<sup>2</sup> • PERIMETER: 14.28 m



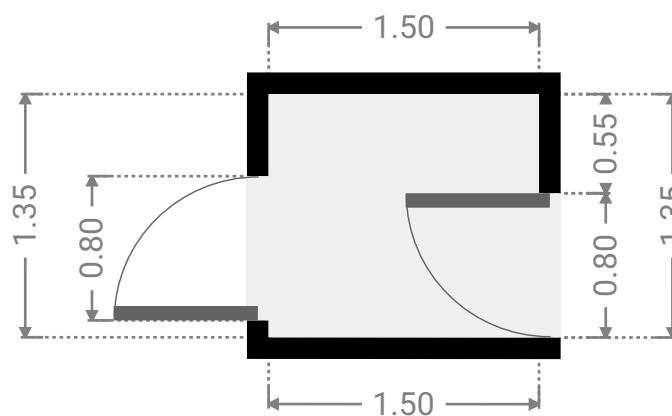
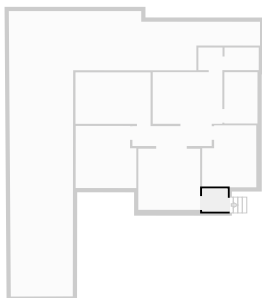
▼ **Bathroom**  
Ground Floor

WIDTH: 1.95 m • LENGTH: 3.02 m  
AREA: 5.89 m<sup>2</sup> • PERIMETER: 9.94 m



▼ **Other**  
Ground Floor

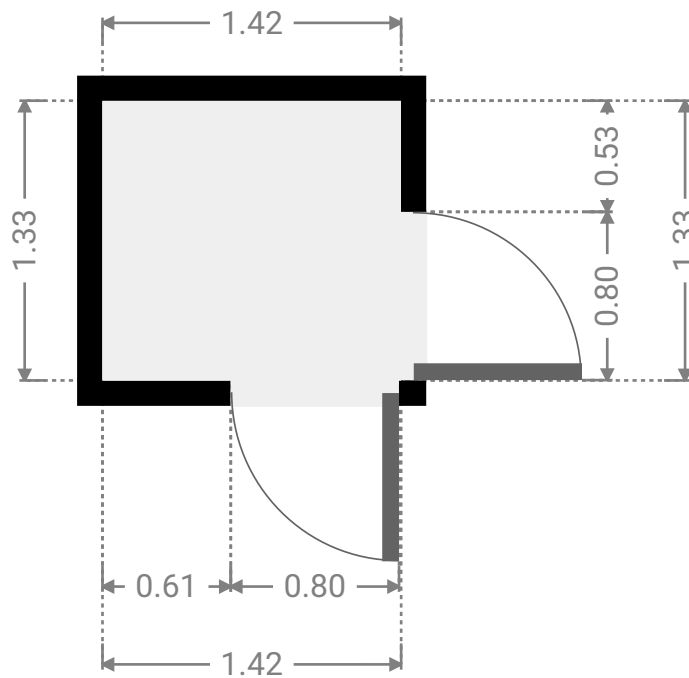
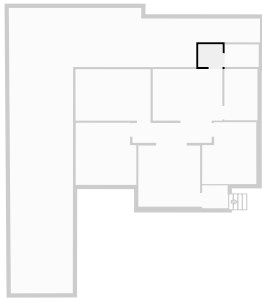
WIDTH: 1.50 m • LENGTH: 1.35 m  
AREA: 2.02 m<sup>2</sup> • PERIMETER: 5.70 m



FLOORS: 1

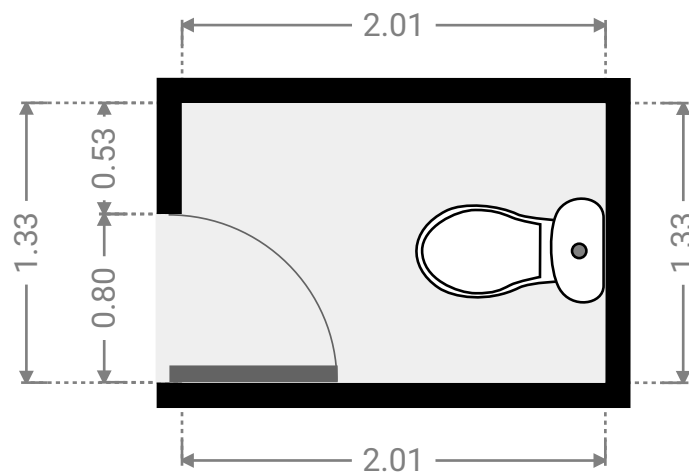
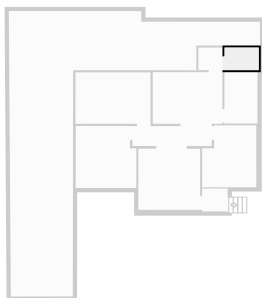
▼ Hall  
Ground Floor

WIDTH: 1.42 m • LENGTH: 1.33 m  
AREA: 1.89 m<sup>2</sup> • PERIMETER: 5.50 m



▼ Toilet  
Ground Floor

WIDTH: 2.01 m • LENGTH: 1.33 m  
AREA: 2.68 m<sup>2</sup> • PERIMETER: 6.69 m



## ▼ Other Ground Floor

WIDTH: 14.80 m • LENGTH: 16.82 m  
AREA: 91.09 m<sup>2</sup> • PERIMETER: 63.08 m

