

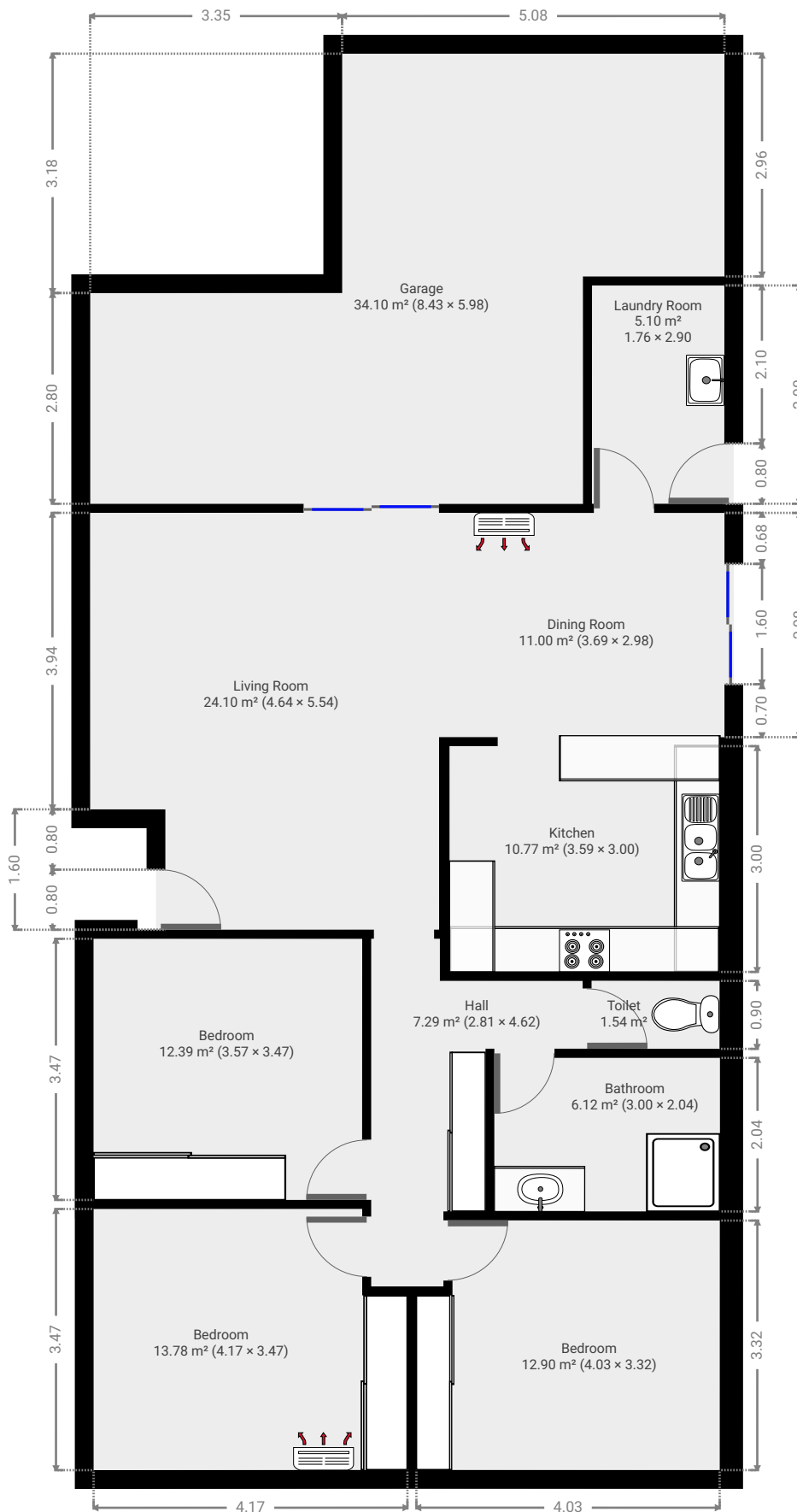
# 2A Hempenstall Street

Created on  
2021-09-07

Floors  
1

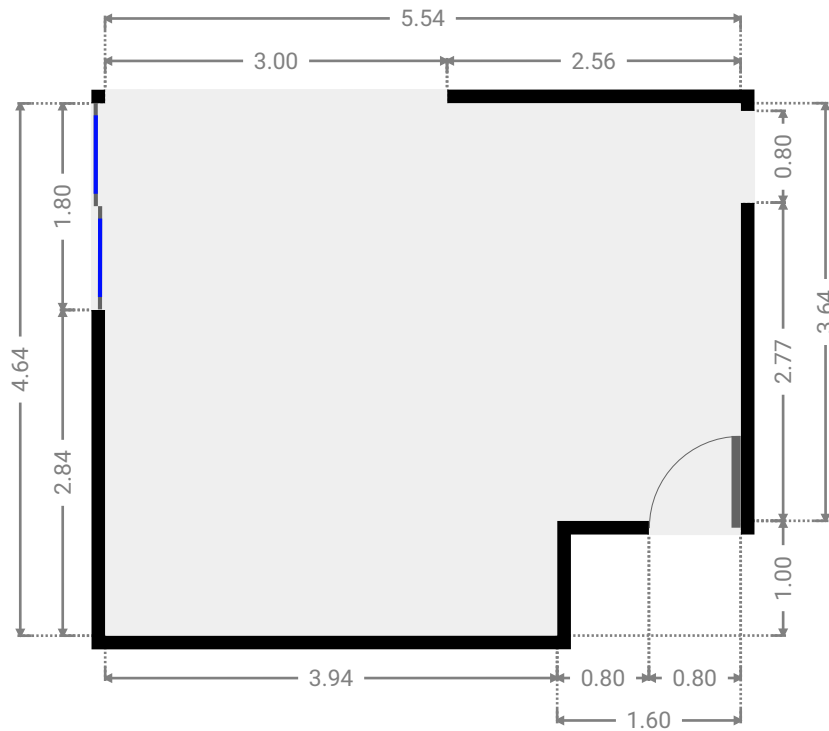
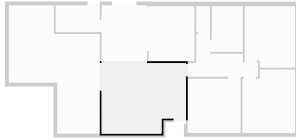


▼ Ground Floor



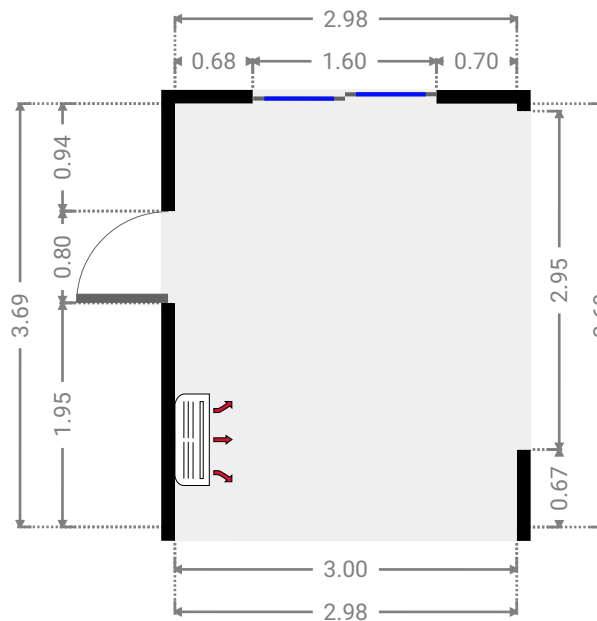
▼ Living Room  
Ground Floor

WIDTH: 5.54 m • LENGTH: 4.64 m  
AREA: 24.10 m<sup>2</sup> • PERIMETER: 20.36 m



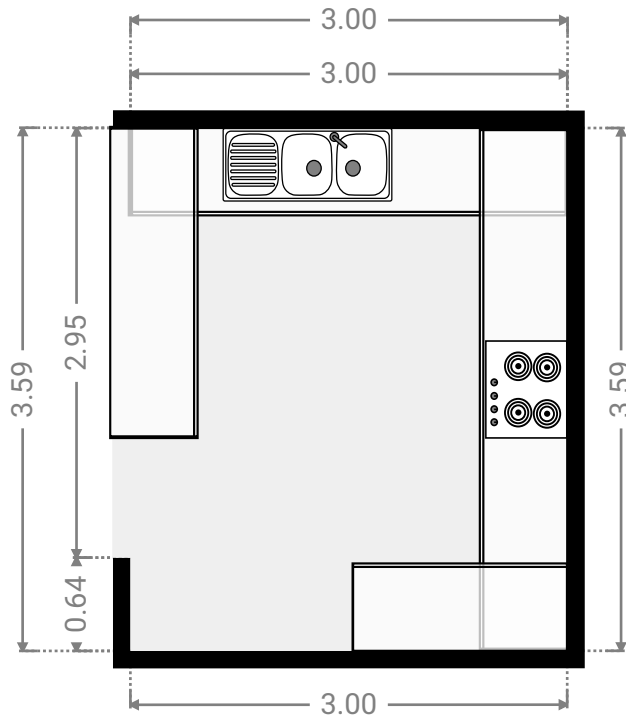
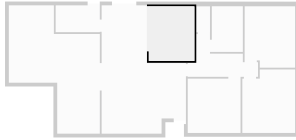
▼ Dining Room  
Ground Floor

WIDTH: 2.98 m • LENGTH: 3.69 m  
AREA: 11.00 m<sup>2</sup> • PERIMETER: 13.34 m



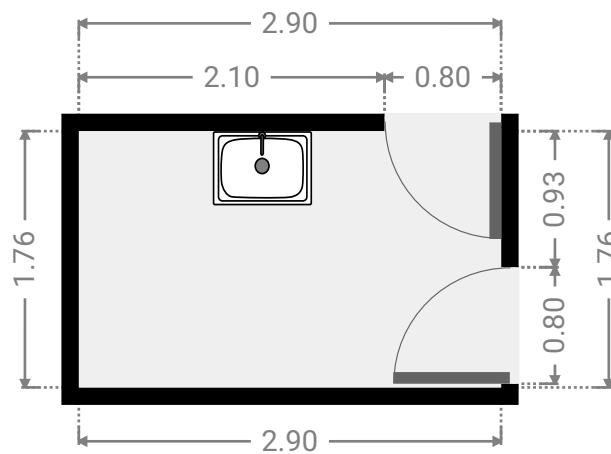
▼ **Kitchen**  
Ground Floor

WIDTH: 3.00 m • LENGTH: 3.59 m  
AREA: 10.77 m<sup>2</sup> • PERIMETER: 13.18 m



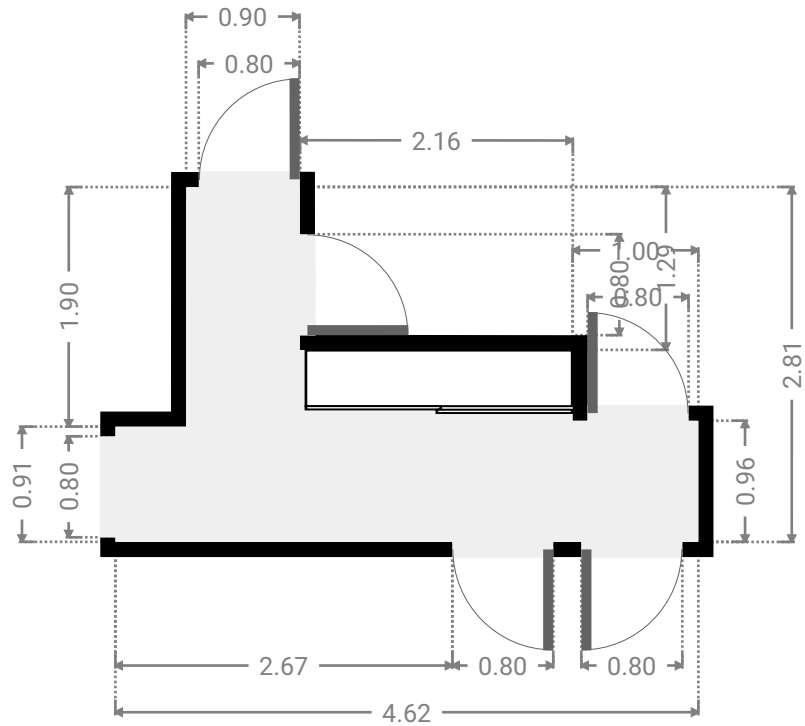
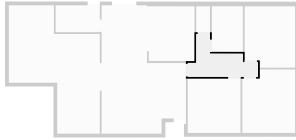
▼ **Laundry Room**  
Ground Floor

WIDTH: 2.90 m • LENGTH: 1.76 m  
AREA: 5.10 m<sup>2</sup> • PERIMETER: 9.32 m



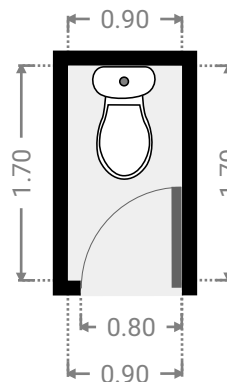
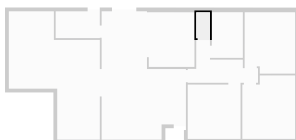
▼ Hall  
Ground Floor

WIDTH: 4.62 m • LENGTH: 2.81 m  
AREA: 7.29 m<sup>2</sup> • PERIMETER: 14.86 m



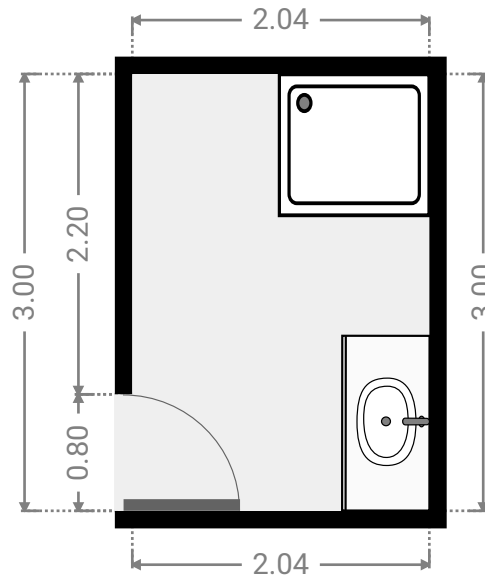
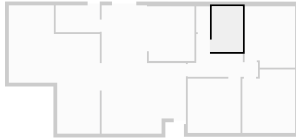
▼ Toilet  
Ground Floor

WIDTH: 0.90 m • LENGTH: 1.70 m  
AREA: 1.54 m<sup>2</sup> • PERIMETER: 5.21 m



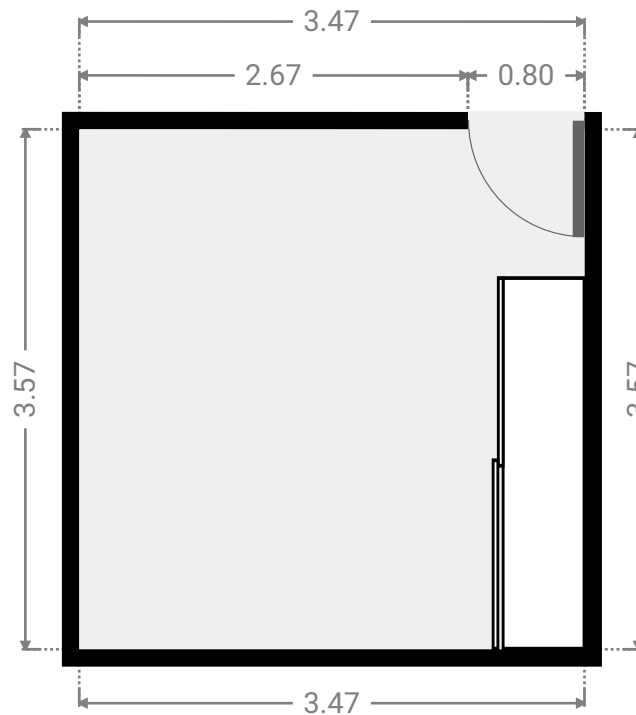
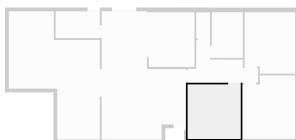
▼ **Bathroom**  
Ground Floor

WIDTH: 2.04 m • LENGTH: 3.00 m  
AREA: 6.12 m<sup>2</sup> • PERIMETER: 10.08 m



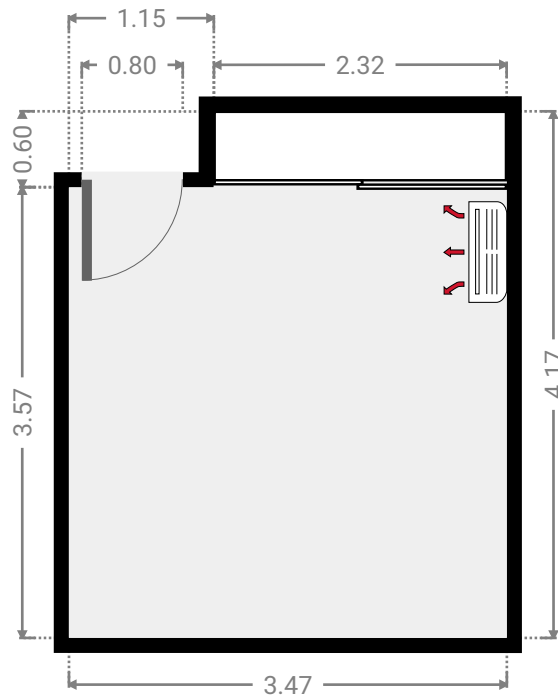
▼ **Bedroom**  
Ground Floor

WIDTH: 3.47 m • LENGTH: 3.57 m  
AREA: 12.39 m<sup>2</sup> • PERIMETER: 14.08 m



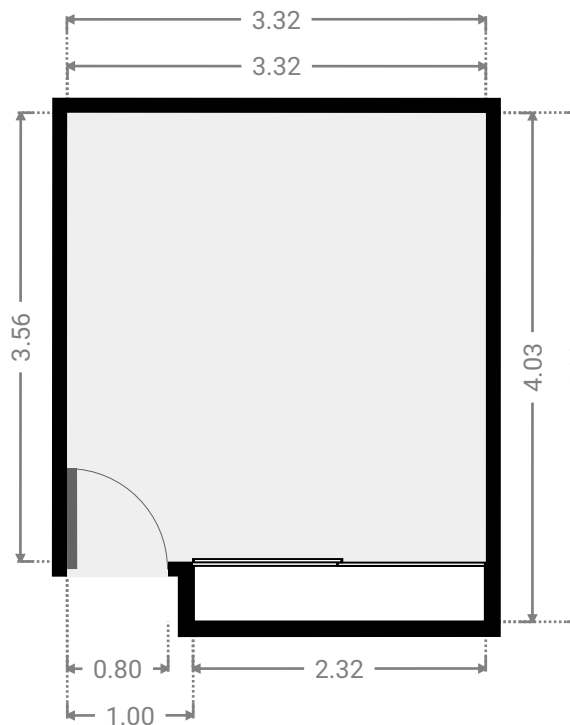
▼ **Bedroom**  
Ground Floor

WIDTH: 3.47 m • LENGTH: 4.17 m  
AREA: 13.78 m<sup>2</sup> • PERIMETER: 15.28 m



▼ **Bedroom**  
Ground Floor

WIDTH: 3.32 m • LENGTH: 4.03 m  
AREA: 12.90 m<sup>2</sup> • PERIMETER: 14.70 m



## ▼ Garage Ground Floor

WIDTH: 5.98 m • LENGTH: 8.43 m  
AREA: 34.10 m<sup>2</sup> • PERIMETER: 28.83 m

