

# 298 Halford Street

**SUBMITTED BY**

Ray White Rockhampton Casey  
stockers@cqoz.com

---

**CREATED ON**

2022-05-11

---

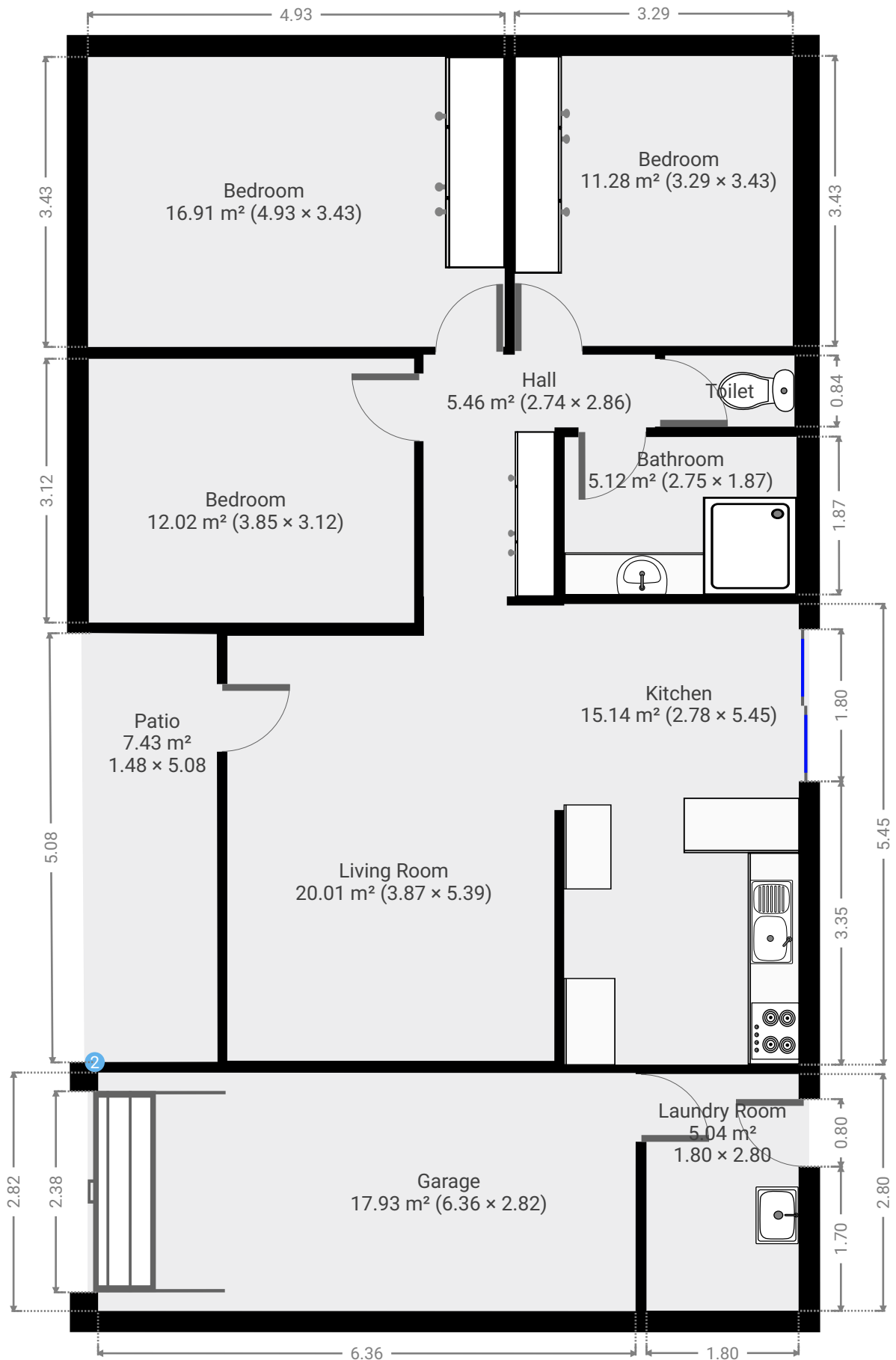
**Floors**

1

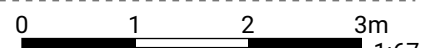
---

FLOORS: 1

▼ Ground Floor



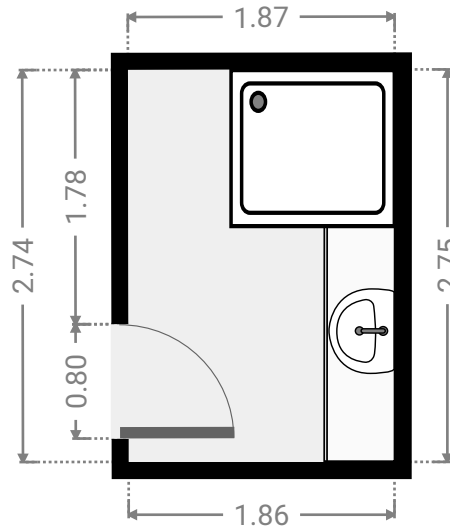
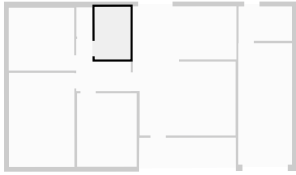
THIS FLOORPLAN IS PROVIDED WITHOUT WARRANTY OF ANY KIND. SENSOPIA DISCLAIMS ANY WARRANTY INCLUDING, WITHOUT LIMITATION, SATISFACTORY QUALITY OR ACCURACY OF DIMENSIONS.



FLOORS: 1

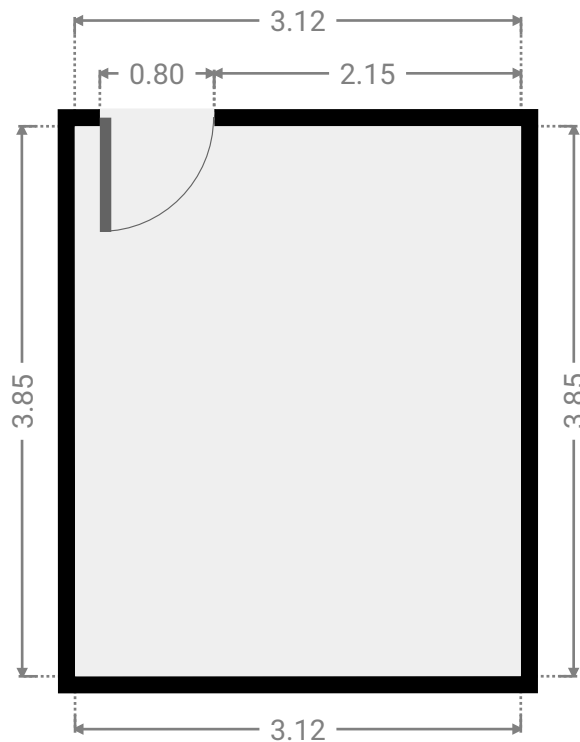
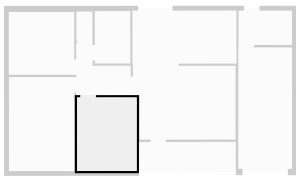
▼ **Bathroom**  
Ground Floor

WIDTH: 1.87 m • LENGTH: 2.75 m  
AREA: 5.12 m<sup>2</sup> • PERIMETER: 9.22 m



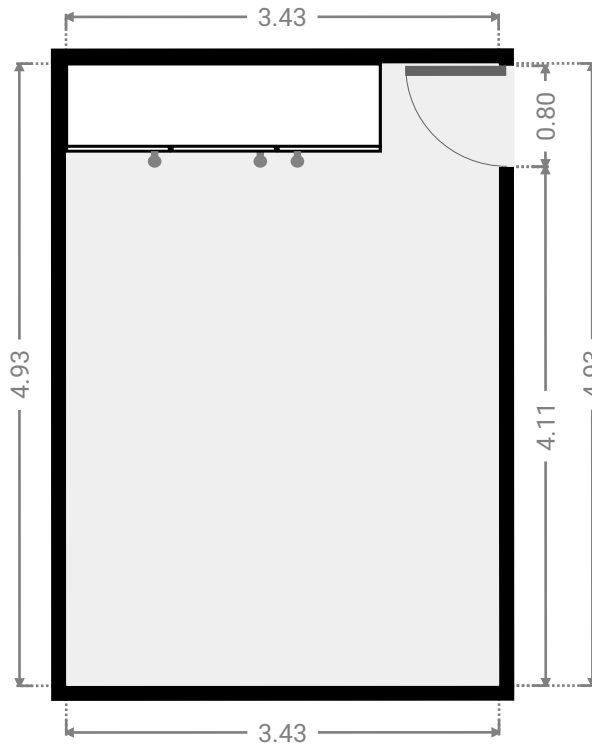
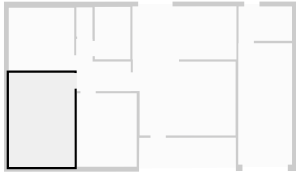
▼ **Bedroom**  
Ground Floor

WIDTH: 3.12 m • LENGTH: 3.85 m  
AREA: 12.02 m<sup>2</sup> • PERIMETER: 13.94 m



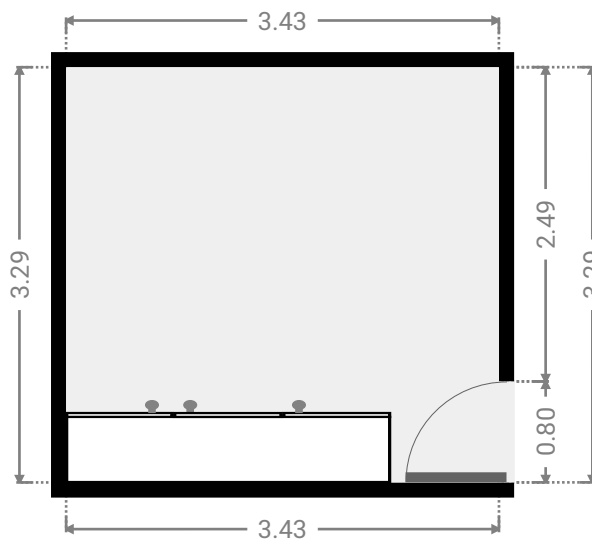
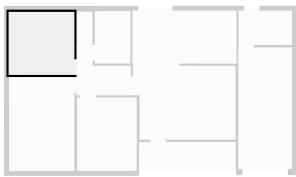
▼ **Bedroom**  
Ground Floor

WIDTH: 3.43 m • LENGTH: 4.93 m  
AREA: 16.91 m<sup>2</sup> • PERIMETER: 16.72 m



▼ **Bedroom**  
Ground Floor

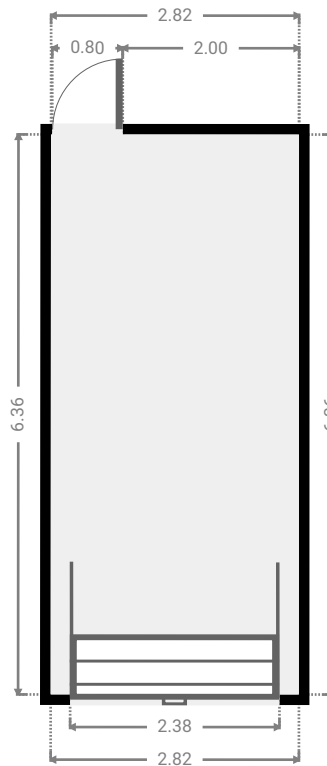
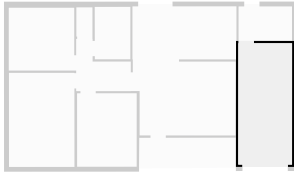
WIDTH: 3.43 m • LENGTH: 3.29 m  
AREA: 11.28 m<sup>2</sup> • PERIMETER: 13.44 m



FLOORS: 1

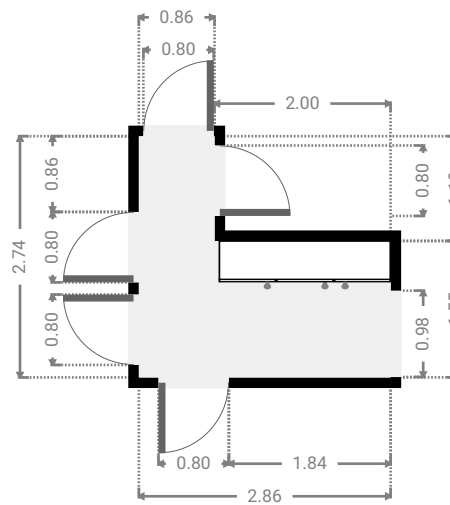
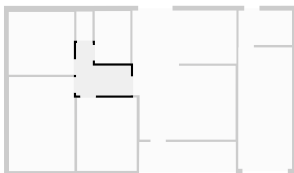
▼ Garage  
Ground Floor

WIDTH: 2.82 m • LENGTH: 6.36 m  
AREA: 17.93 m<sup>2</sup> • PERIMETER: 18.36 m



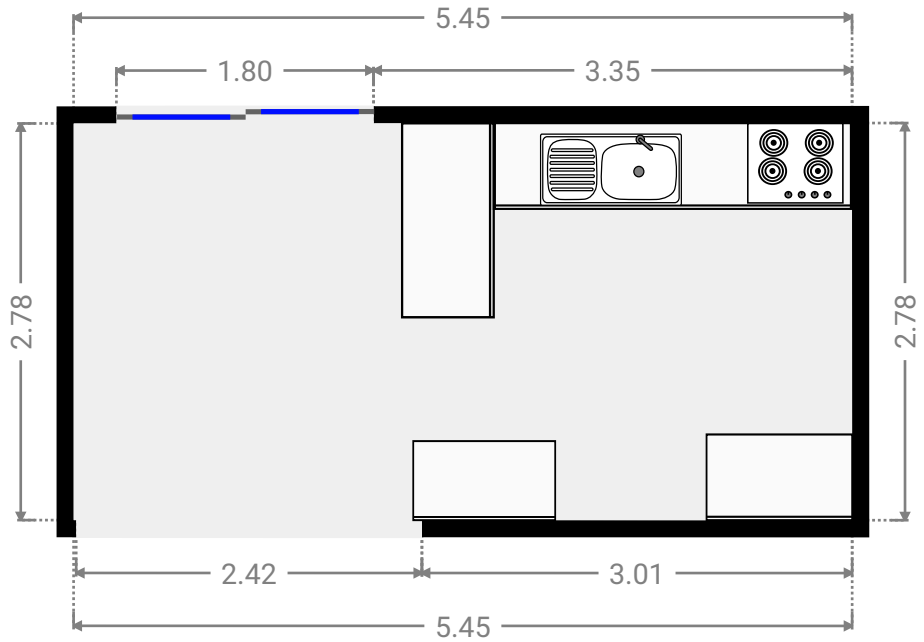
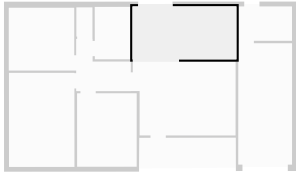
▼ Hall  
Ground Floor

WIDTH: 2.86 m • LENGTH: 2.74 m  
AREA: 5.46 m<sup>2</sup> • PERIMETER: 11.20 m



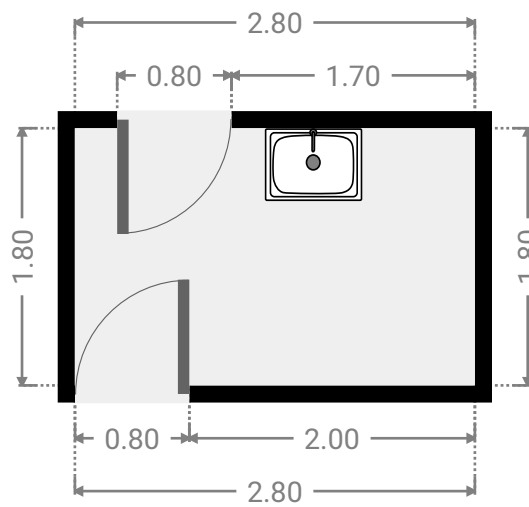
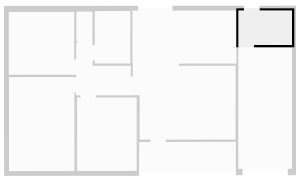
▼ **Kitchen**  
Ground Floor

WIDTH: 5.45 m • LENGTH: 2.78 m  
AREA: 15.14 m<sup>2</sup> • PERIMETER: 16.46 m



▼ **Laundry Room**  
Ground Floor

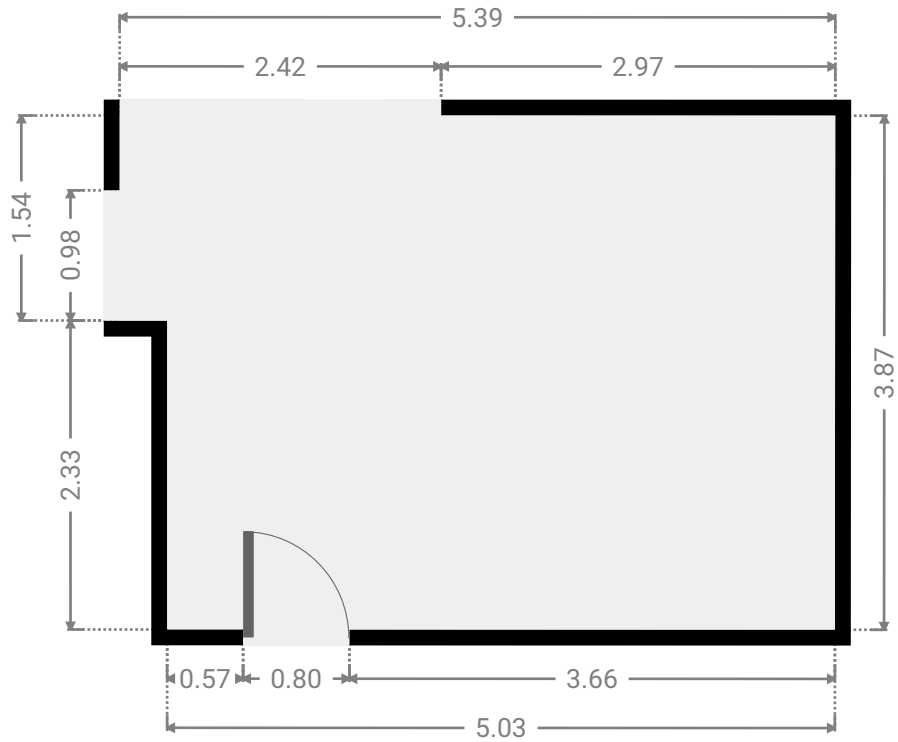
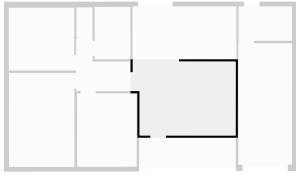
WIDTH: 2.80 m • LENGTH: 1.80 m  
AREA: 5.04 m<sup>2</sup> • PERIMETER: 9.20 m



FLOORS: 1

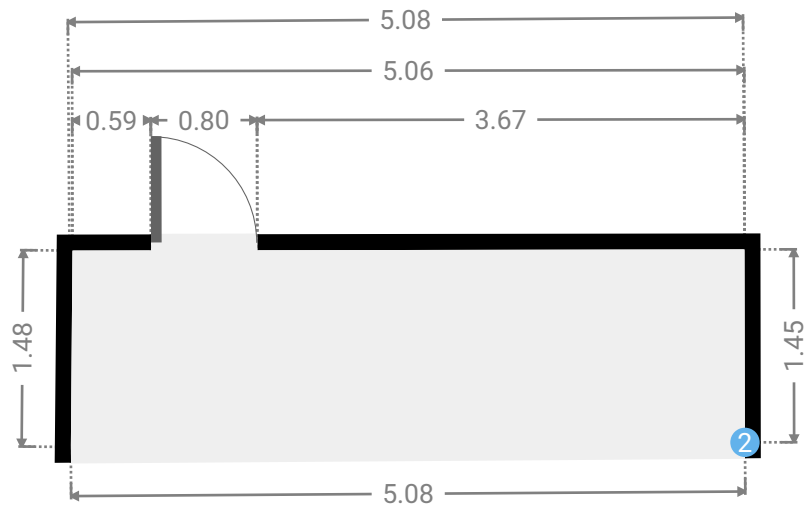
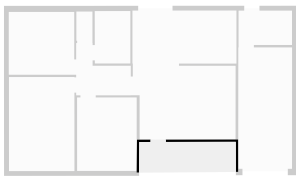
▼ Living Room  
Ground Floor

WIDTH: 5.39 m • LENGTH: 3.87 m  
AREA: 20.01 m<sup>2</sup> • PERIMETER: 18.51 m



▼ Patio  
Ground Floor

WIDTH: 5.08 m • LENGTH: 1.48 m  
AREA: 7.43 m<sup>2</sup> • PERIMETER: 13.07 m



▼ **Patio**/Ground Floor

2 **OPENING**

Height  
0.00 m





▼ Toilet  
Ground Floor

WIDTH: 0.84 m • LENGTH: 1.53 m  
AREA: 1.29 m<sup>2</sup> • PERIMETER: 4.74 m

