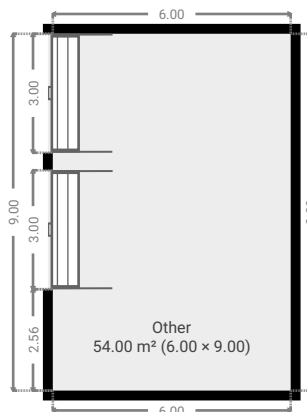
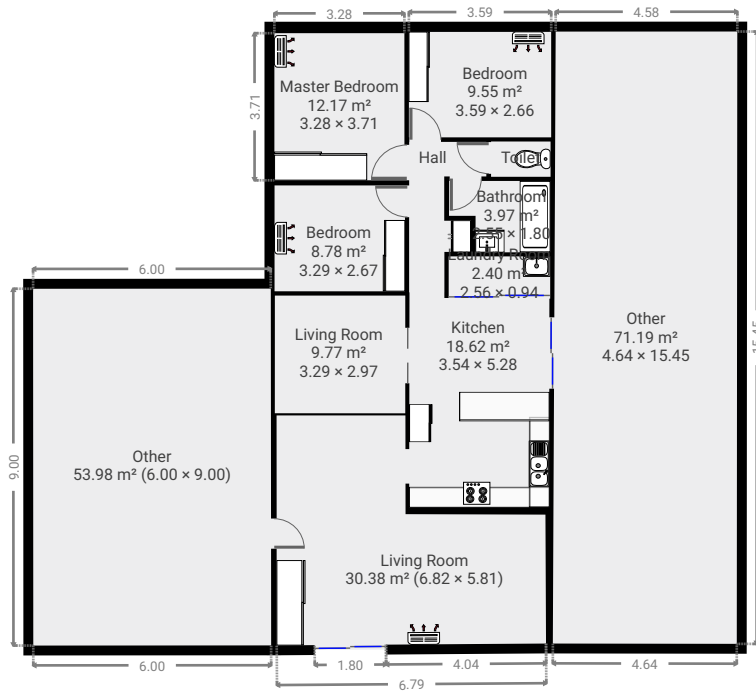
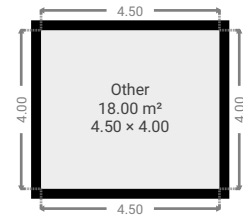


292 Johnson Road

Created on
2021-03-02

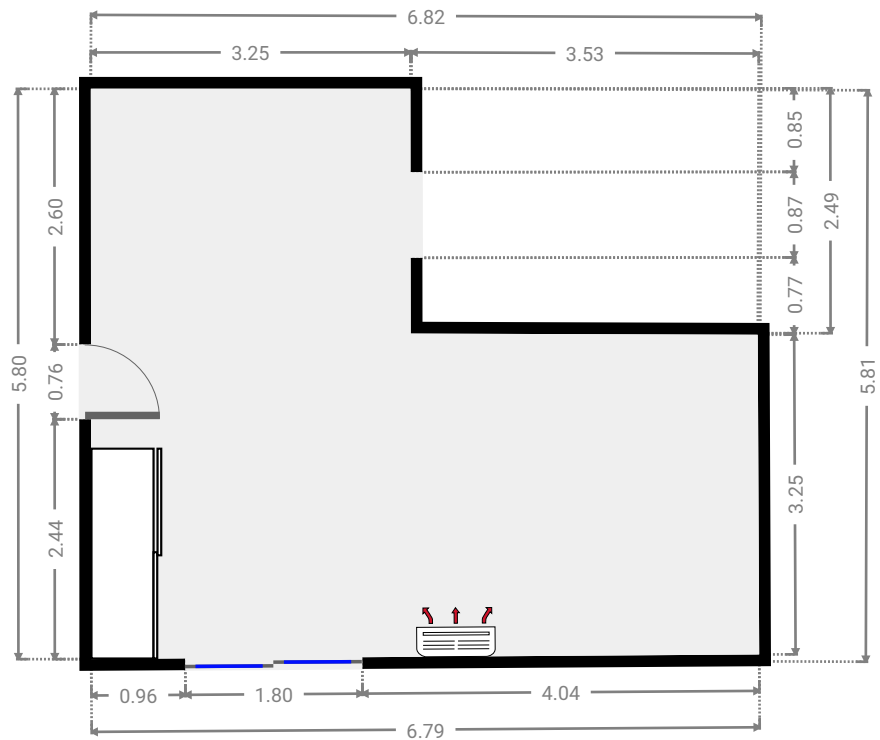
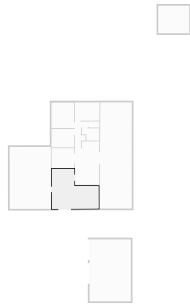
Floors
1

▼ Ground Floor



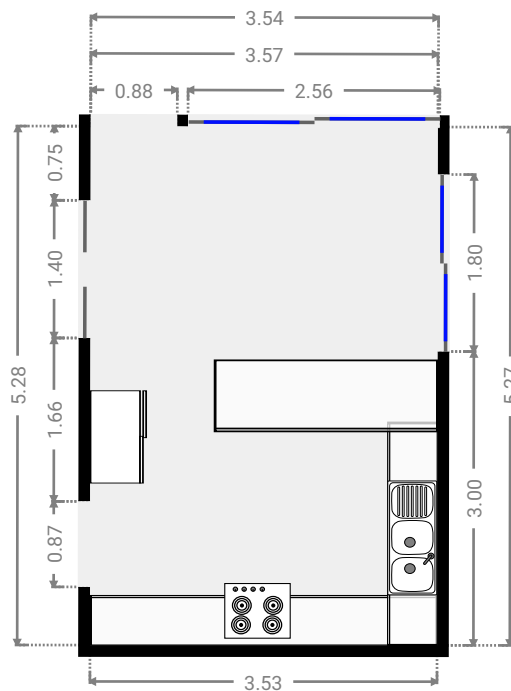
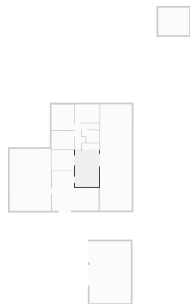
▼ Living Room
Ground Floor

WIDTH: 6.82 m • LENGTH: 5.81 m
AREA: 30.38 m² • PERIMETER: 25.11 m



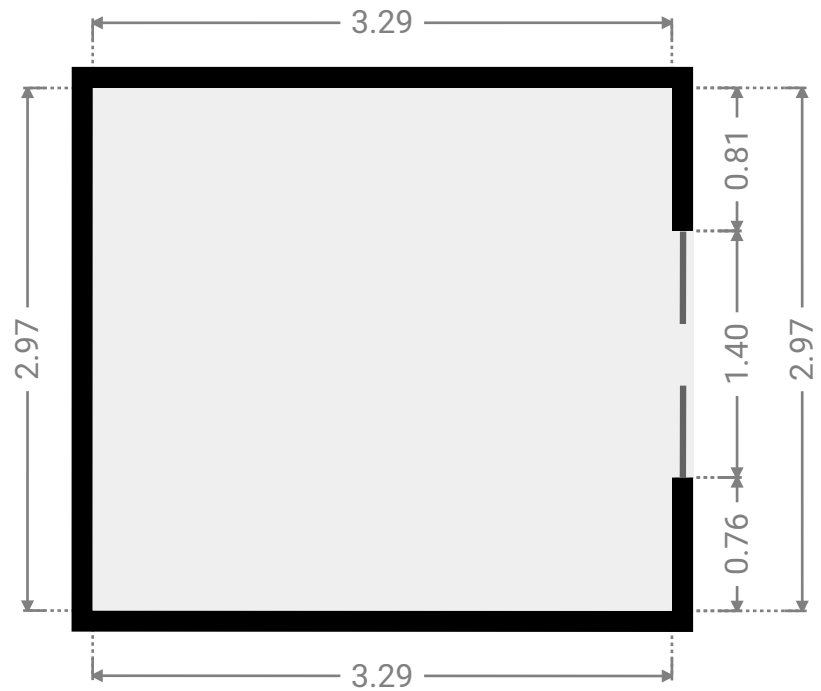
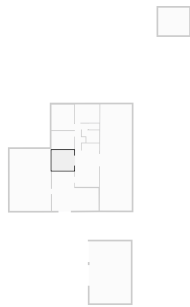
▼ Kitchen
Ground Floor

WIDTH: 3.54 m • LENGTH: 5.28 m
AREA: 18.62 m² • PERIMETER: 17.61 m



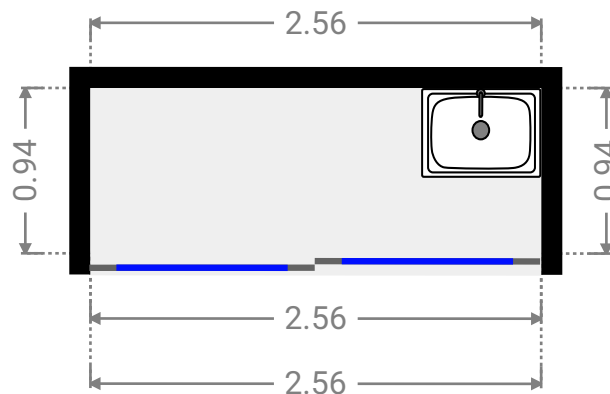
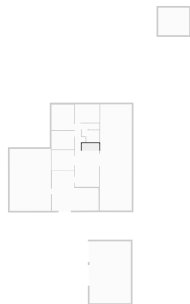
▼ Living Room
Ground Floor

WIDTH: 3.29 m • LENGTH: 2.97 m
AREA: 9.77 m² • PERIMETER: 12.52 m



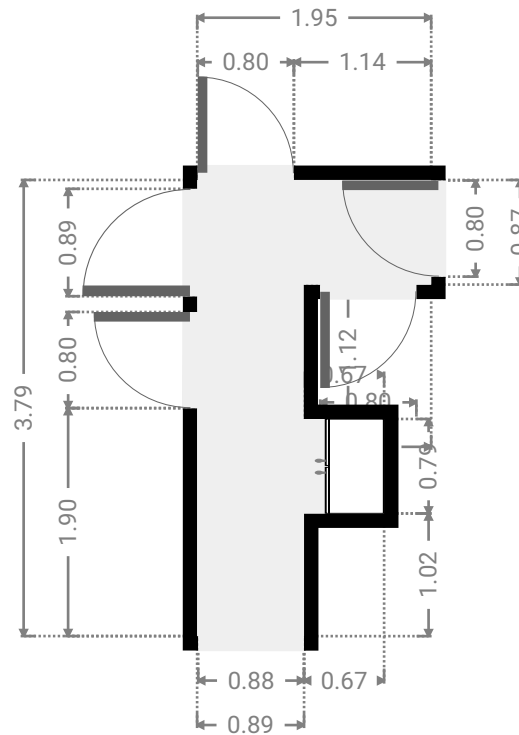
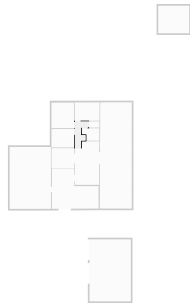
▼ Laundry Room
Ground Floor

WIDTH: 2.56 m • LENGTH: 0.94 m
AREA: 2.40 m² • PERIMETER: 7.00 m



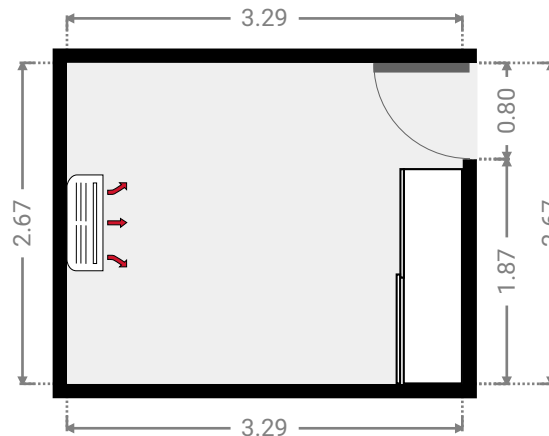
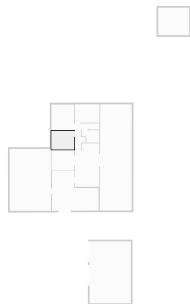
▼ **Hall**
Ground Floor

WIDTH: 1.95 m • LENGTH: 3.80 m
AREA: 4.82 m² • PERIMETER: 12.82 m



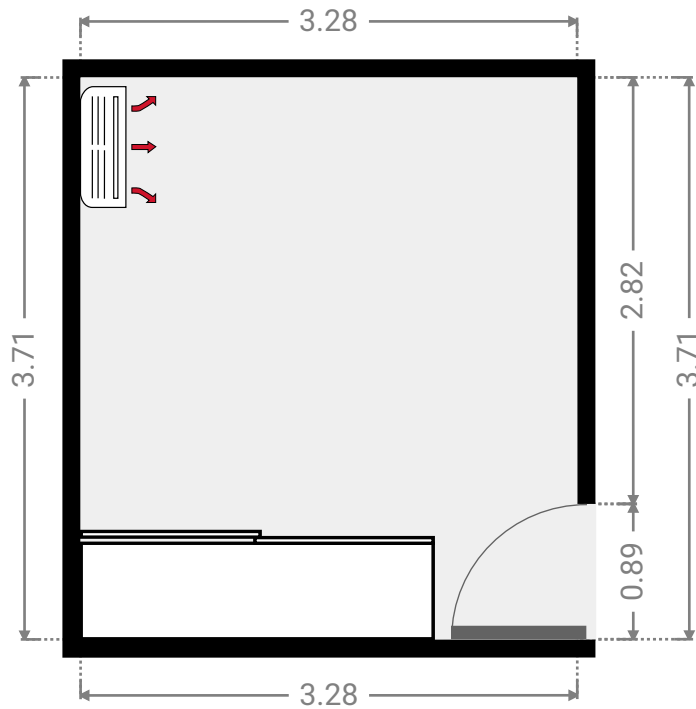
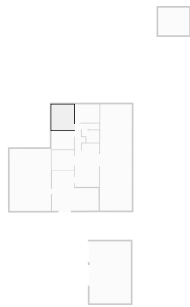
▼ **Bedroom**
Ground Floor

WIDTH: 3.29 m • LENGTH: 2.67 m
AREA: 8.78 m² • PERIMETER: 11.92 m



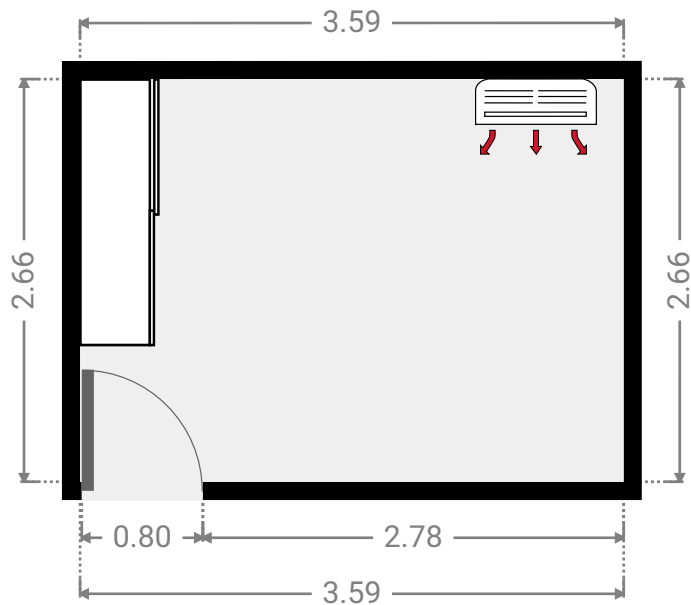
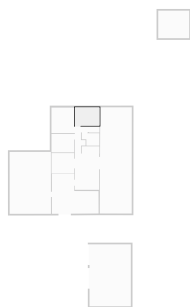
▼ **Master Bedroom**
Ground Floor

WIDTH: 3.28 m • LENGTH: 3.71 m
AREA: 12.17 m² • PERIMETER: 13.98 m



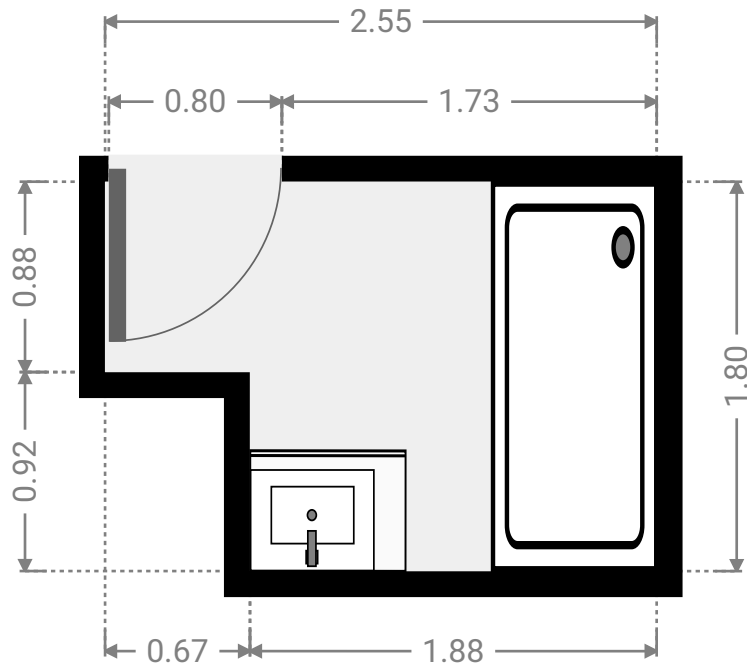
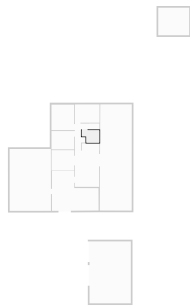
▼ **Bedroom**
Ground Floor

WIDTH: 3.59 m • LENGTH: 2.66 m
AREA: 9.55 m² • PERIMETER: 12.50 m



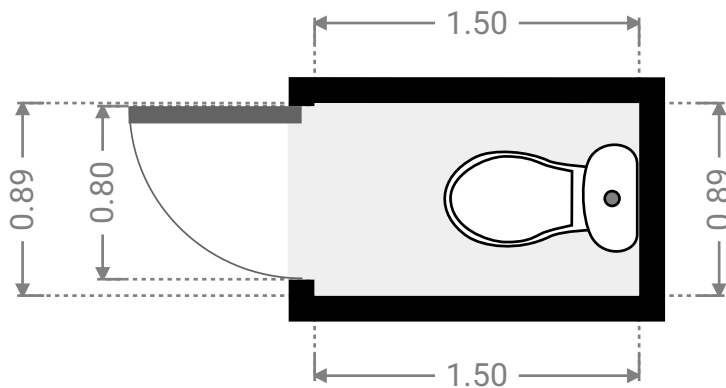
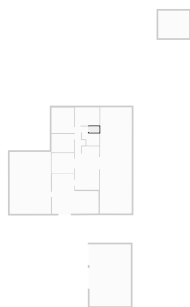
▼ Bathroom
Ground Floor

WIDTH: 2.55 m • LENGTH: 1.80 m
AREA: 3.97 m² • PERIMETER: 8.70 m



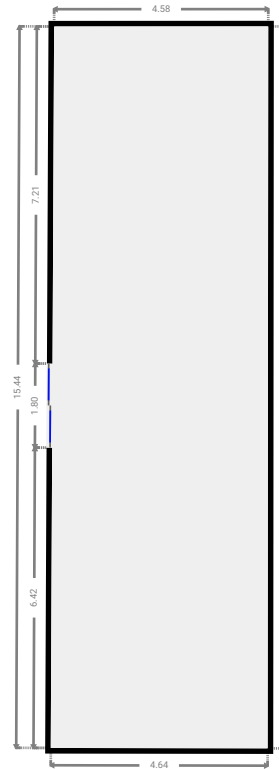
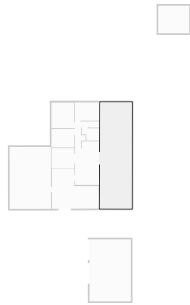
▼ Toilet
Ground Floor

WIDTH: 1.50 m • LENGTH: 0.89 m
AREA: 1.33 m² • PERIMETER: 4.78 m



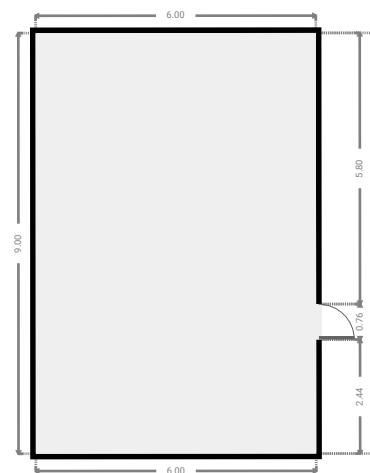
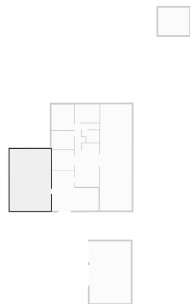
▼ Other
Ground Floor

WIDTH: 4.64 m • LENGTH: 15.45 m
AREA: 71.19 m² • PERIMETER: 40.10 m



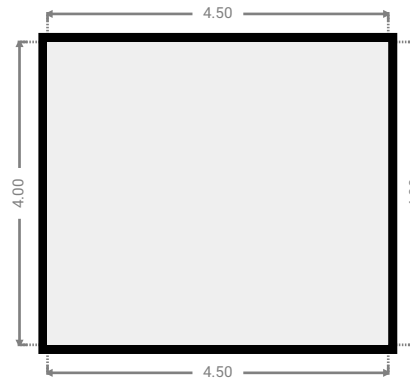
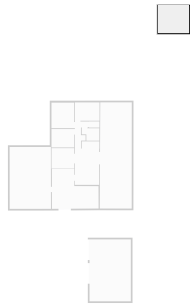
▼ Other
Ground Floor

WIDTH: 6.00 m • LENGTH: 9.00 m
AREA: 53.98 m² • PERIMETER: 30.00 m



▼ Other
Ground Floor

WIDTH: 4.50 m • LENGTH: 4.00 m
AREA: 18.00 m² • PERIMETER: 17.00 m



▼ Other
Ground Floor

WIDTH: 6.00 m • LENGTH: 9.00 m
AREA: 54.00 m² • PERIMETER: 30.00 m

