

29 Riverside Drive

SUBMITTED BY

Ray White Rockhampton Casey
stockers@cqoz.com

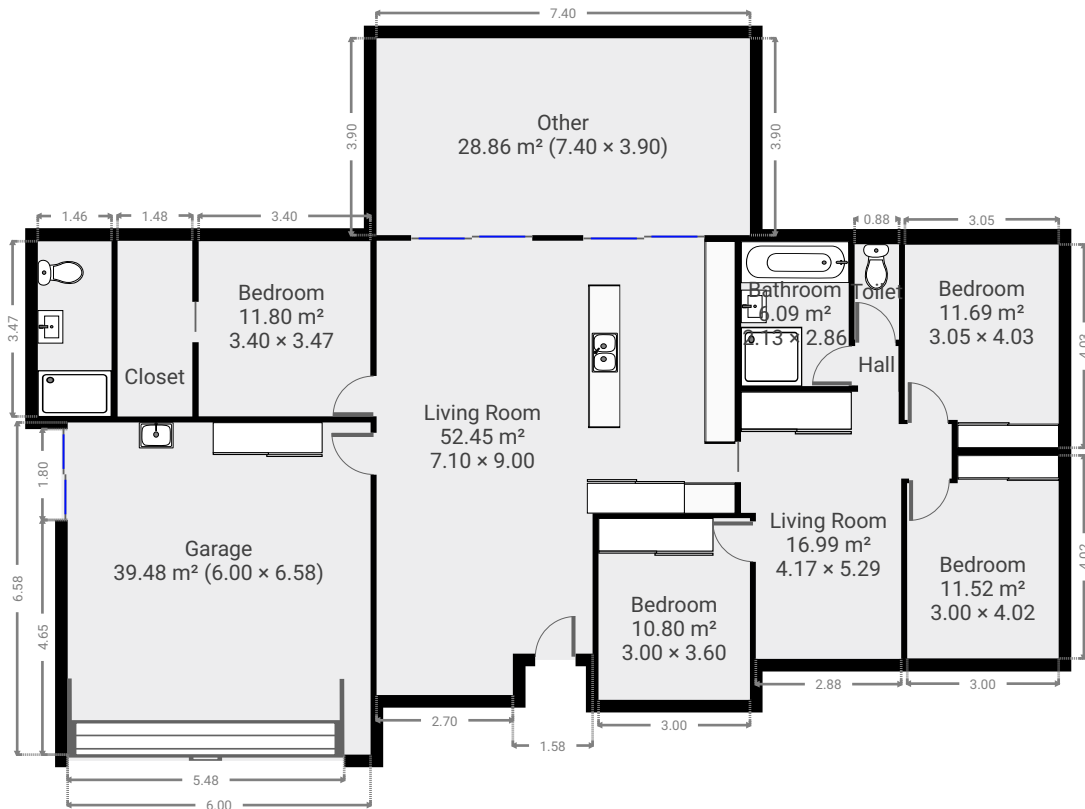
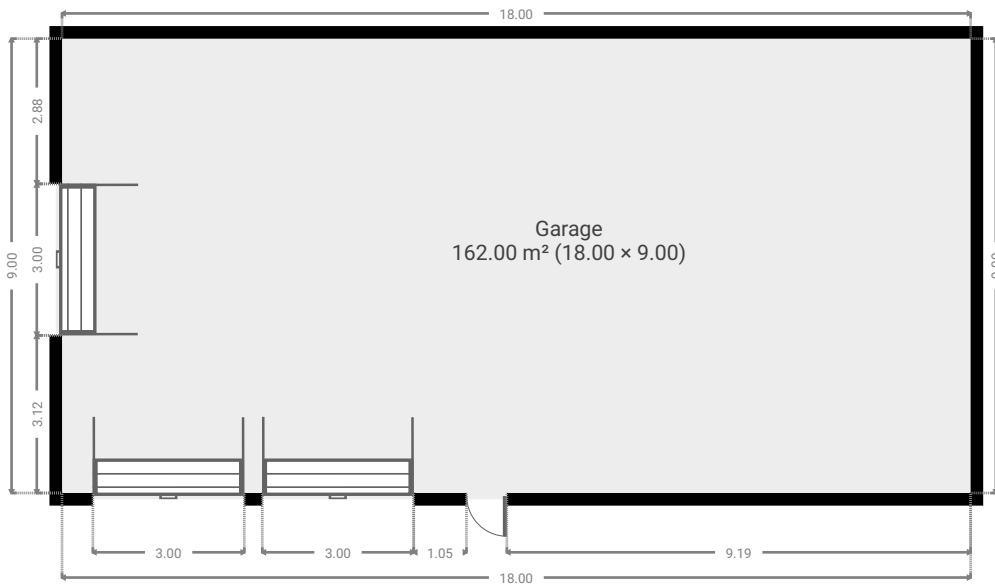
CREATED ON

2022-08-08

Floors

1

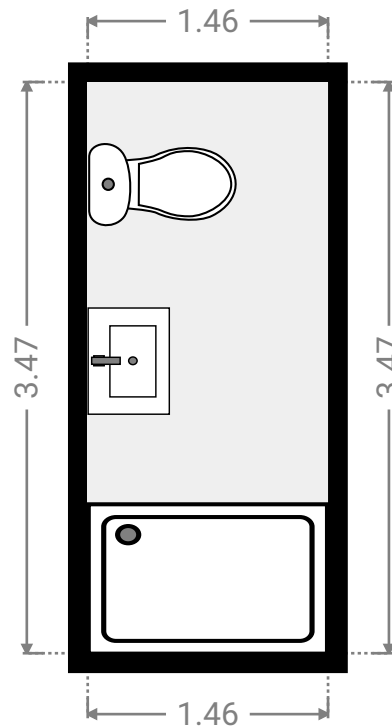
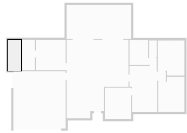
▼ Ground Floor



FLOORS: 1

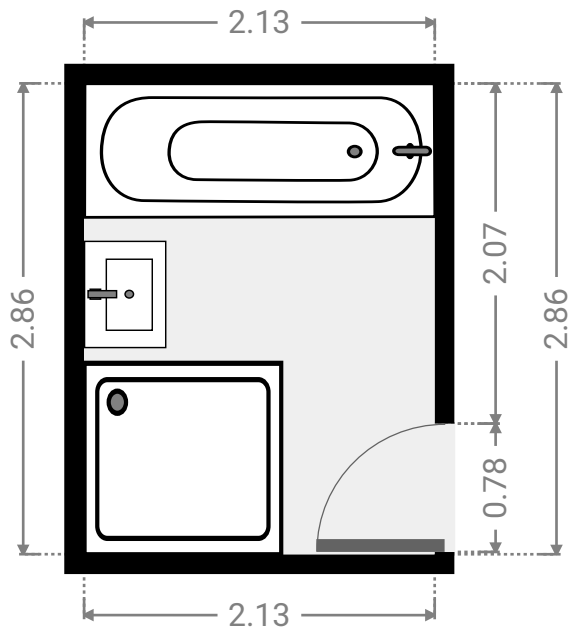
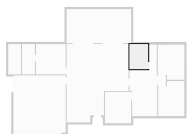
▼ **Bathroom**
Ground Floor

WIDTH: 1.46 m • LENGTH: 3.47 m
AREA: 5.07 m² • PERIMETER: 9.86 m



▼ **Bathroom**
Ground Floor

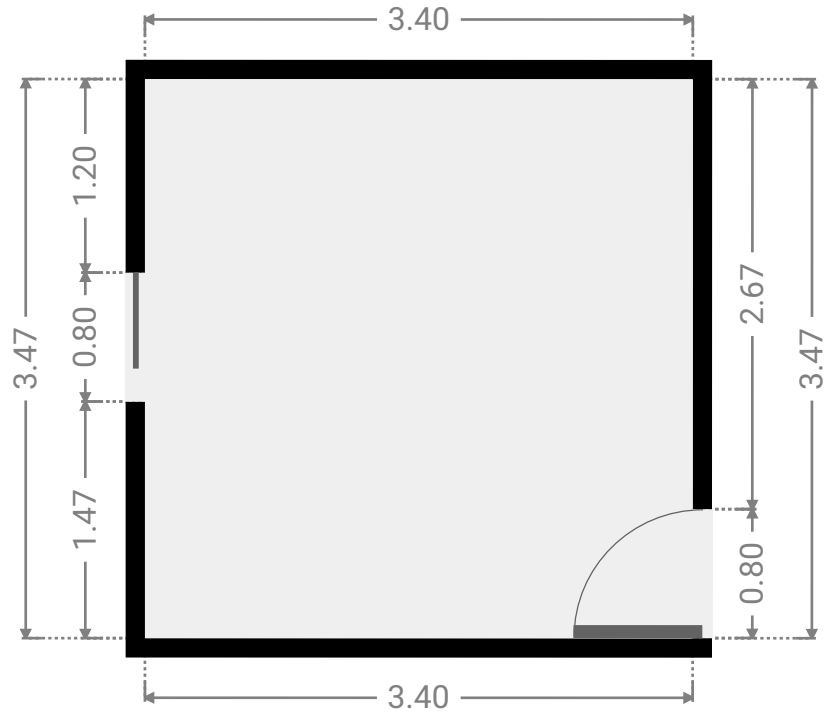
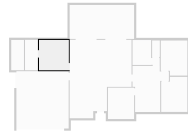
WIDTH: 2.13 m • LENGTH: 2.86 m
AREA: 6.09 m² • PERIMETER: 9.98 m



FLOORS: 1

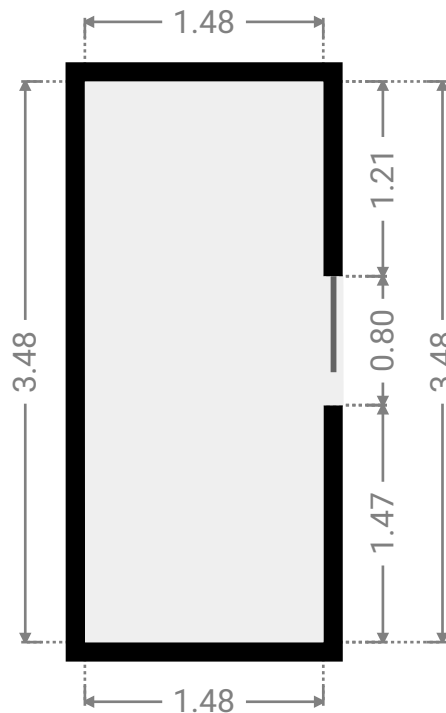
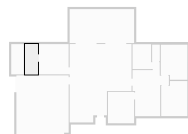
▼ **Bedroom**
Ground Floor

WIDTH: 3.40 m • LENGTH: 3.47 m
AREA: 11.80 m² • PERIMETER: 13.74 m



▼ **Closet**
Ground Floor

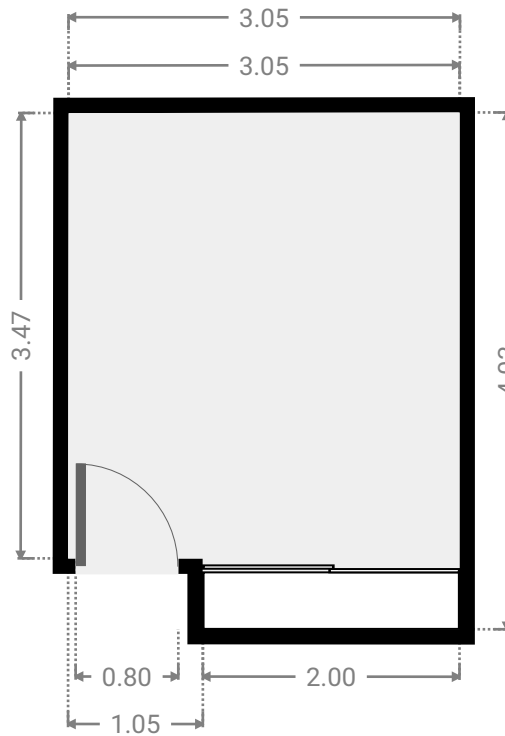
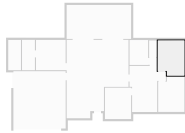
WIDTH: 1.48 m • LENGTH: 3.48 m
AREA: 5.15 m² • PERIMETER: 9.92 m



FLOORS: 1

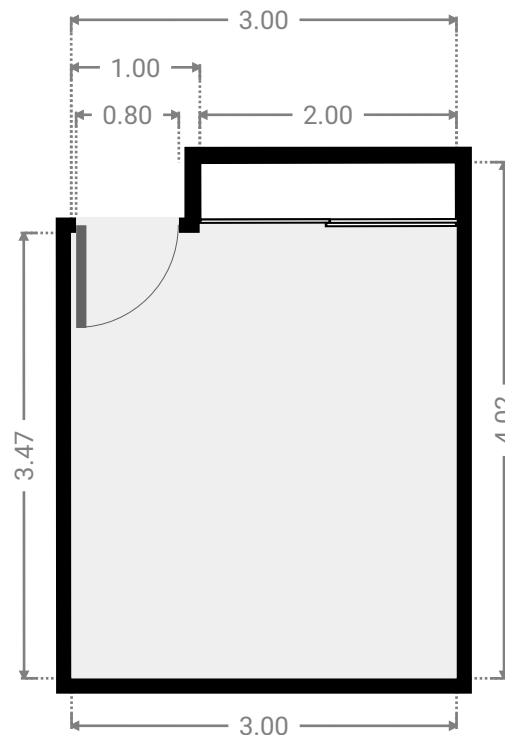
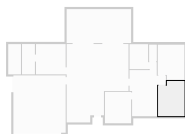
▼ **Bedroom**
Ground Floor

WIDTH: 3.05 m • LENGTH: 4.03 m
AREA: 11.69 m² • PERIMETER: 14.14 m



▼ **Bedroom**
Ground Floor

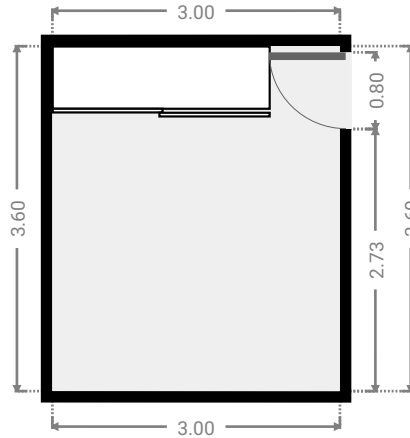
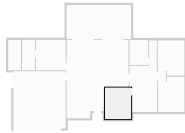
WIDTH: 3.00 m • LENGTH: 4.02 m
AREA: 11.52 m² • PERIMETER: 14.04 m



FLOORS: 1

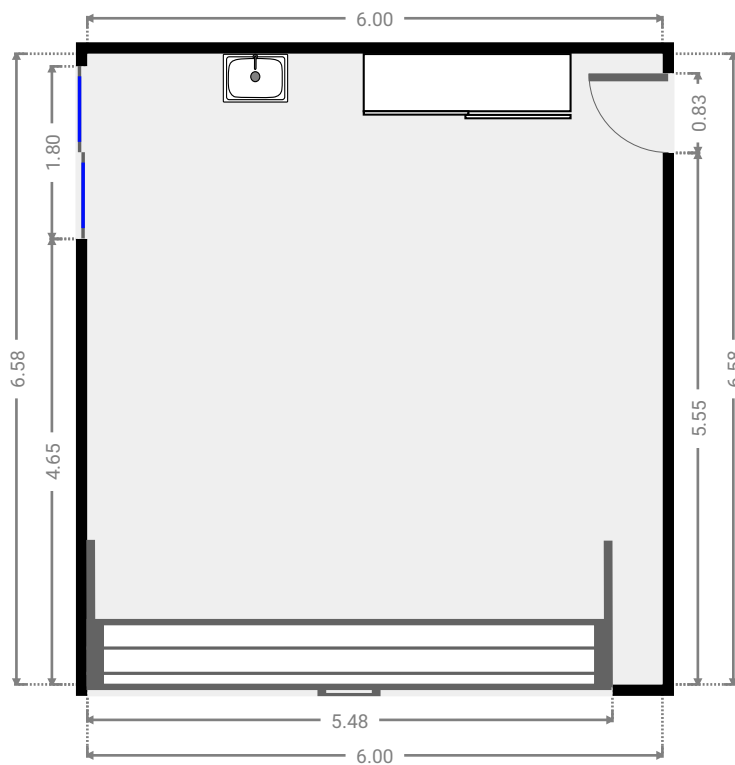
▼ **Bedroom**
Ground Floor

WIDTH: 3.00 m • LENGTH: 3.60 m
AREA: 10.80 m² • PERIMETER: 13.20 m



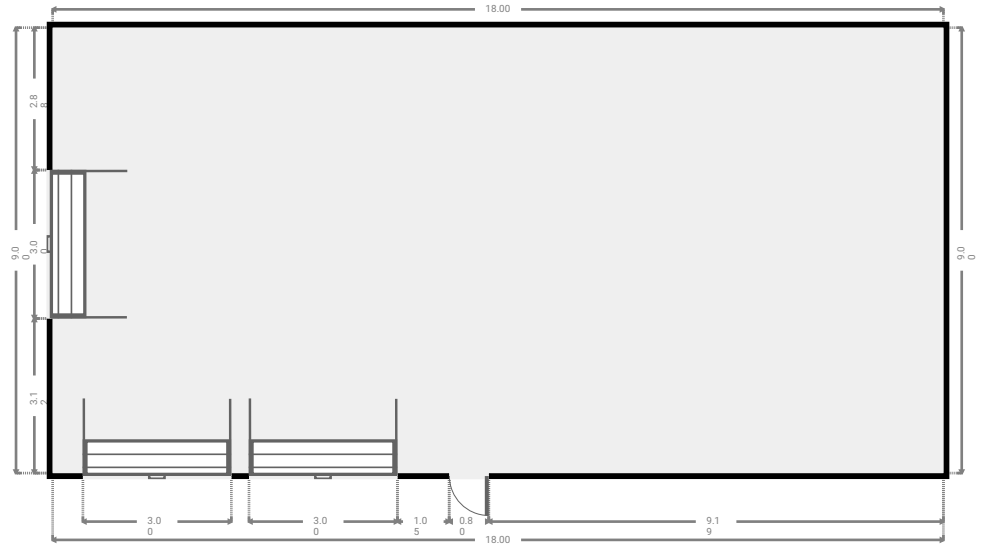
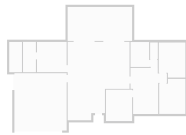
▼ **Garage**
Ground Floor

WIDTH: 6.00 m • LENGTH: 6.58 m
AREA: 39.48 m² • PERIMETER: 25.16 m



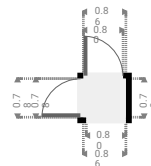
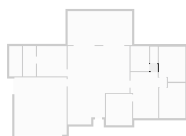
▼ Garage Ground Floor

WIDTH: 18.00 m • LENGTH: 9.00 m
AREA: 162.00 m² • PERIMETER: 54.00 m



▼ Hall Ground Floor

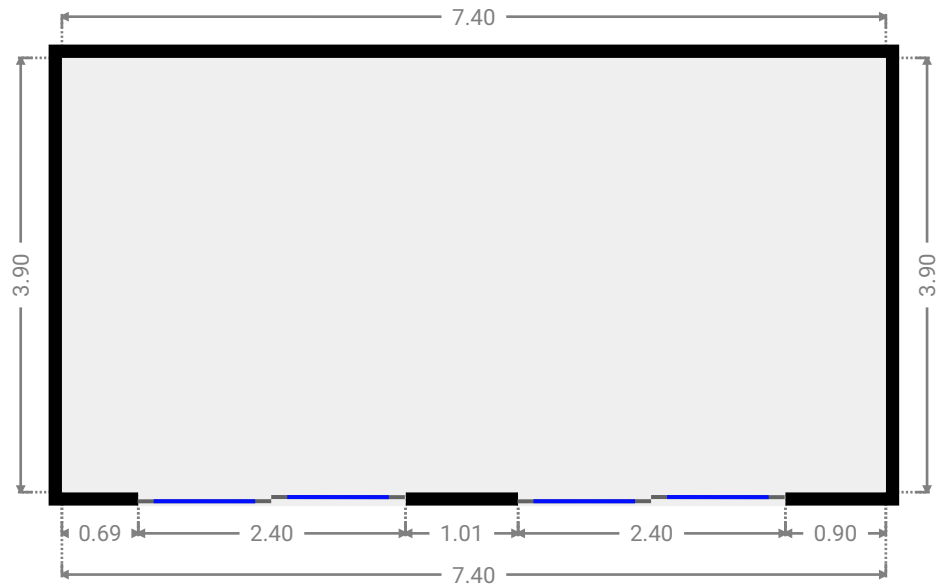
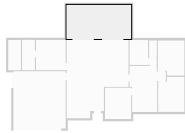
WIDTH: 0.86 m • LENGTH: 0.78 m
AREA: 0.67 m² • PERIMETER: 3.28 m



FLOORS: 1

▼ Other Ground Floor

WIDTH: 7.40 m • LENGTH: 3.90 m
AREA: 28.86 m² • PERIMETER: 22.60 m



▼ Toilet Ground Floor

WIDTH: 0.88 m • LENGTH: 1.89 m
AREA: 1.66 m² • PERIMETER: 5.54 m

