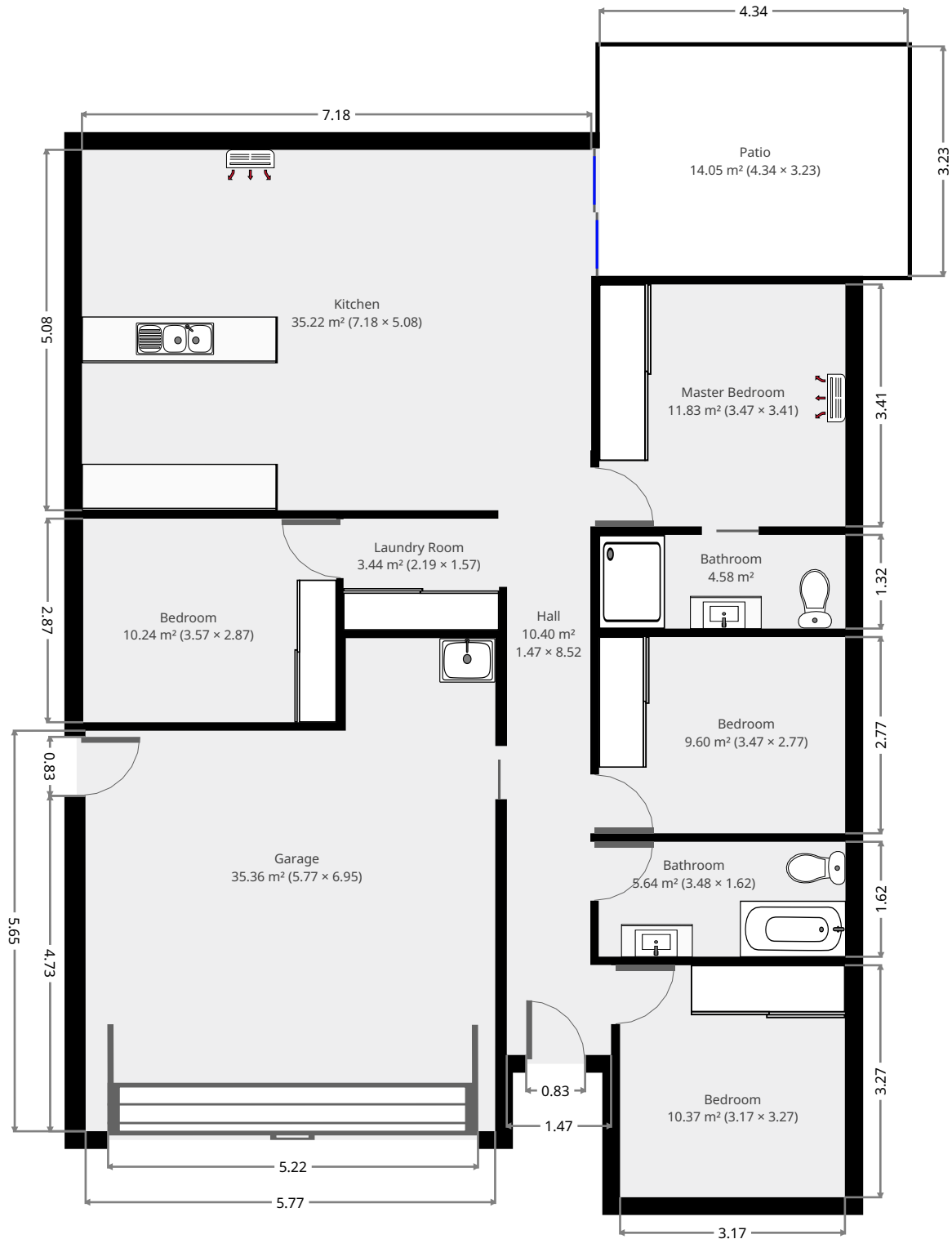


# 29 Brodie Drive

## Ground Floor



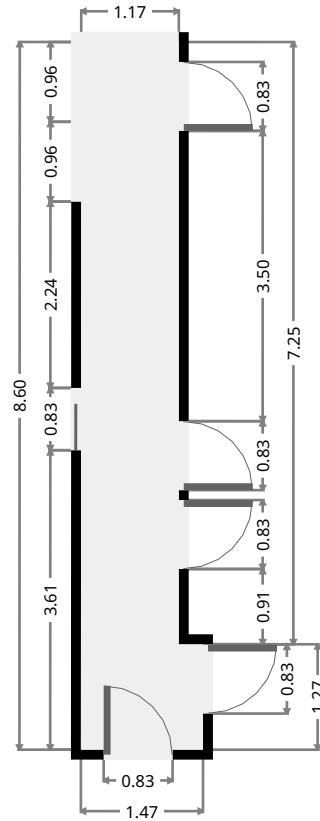
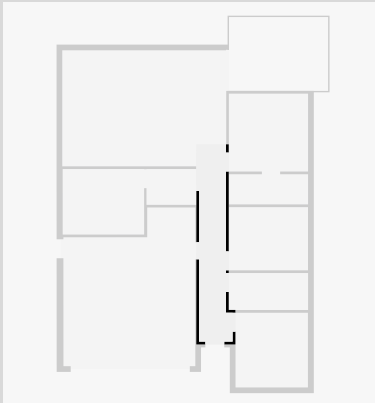
THIS FLOORPLAN IS PROVIDED WITHOUT WARRANTY OF ANY KIND. SENSOPIA DISCLAIMS ANY WARRANTY INCLUDING, WITHOUT LIMITATION, SATISFACTORY QUALITY OR ACCURACY OF DIMENSIONS.



# 29 Brodie Drive

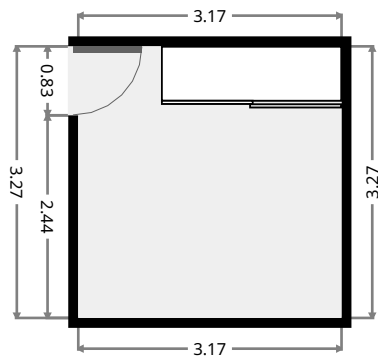
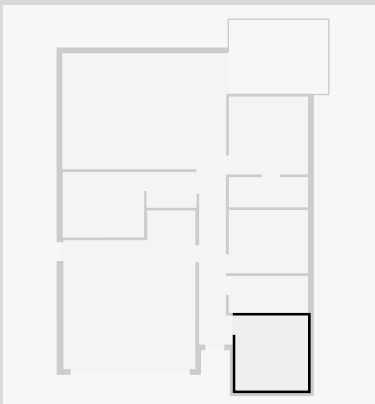
## Hall

Width: 1.47 m  
 Length: 8.52 m  
 Area: 10.40 m<sup>2</sup>  
 Perimeter: 19.98 m



## Bedroom

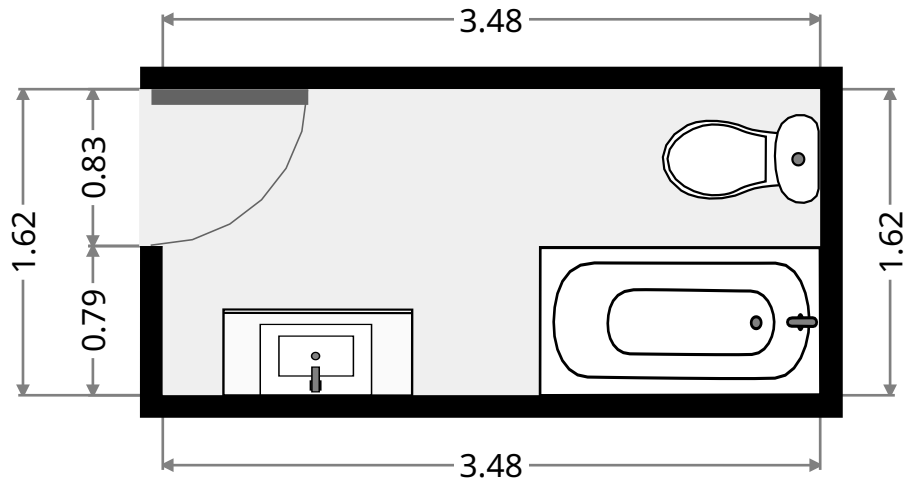
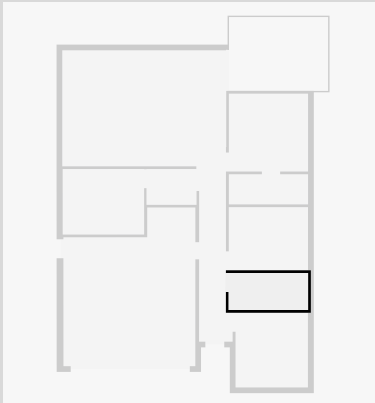
Width: 3.17 m  
 Length: 3.27 m  
 Area: 10.37 m<sup>2</sup>  
 Perimeter: 12.88 m



# 29 Brodie Drive

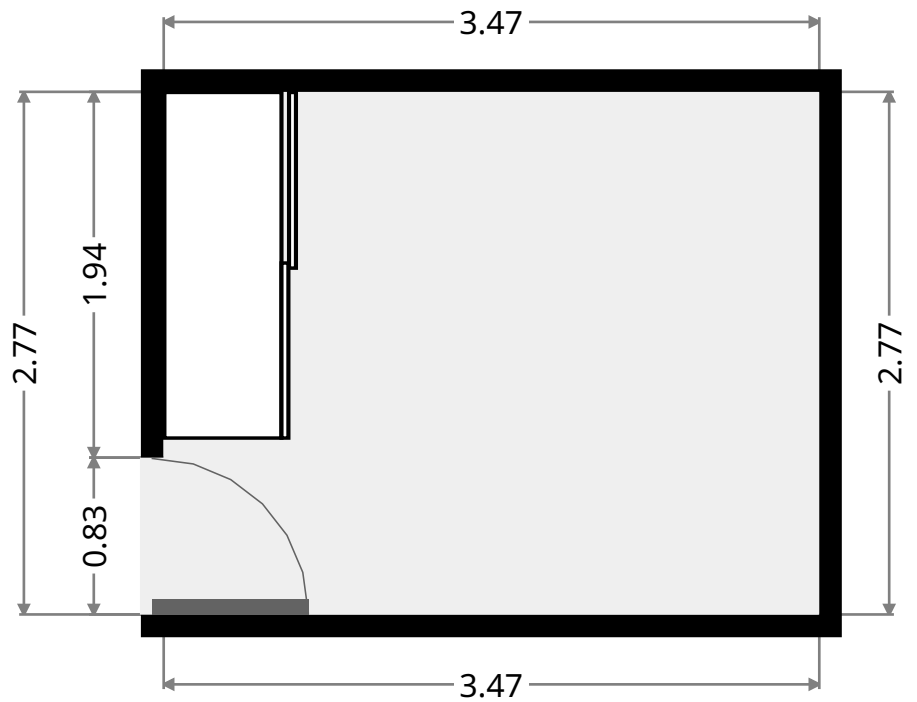
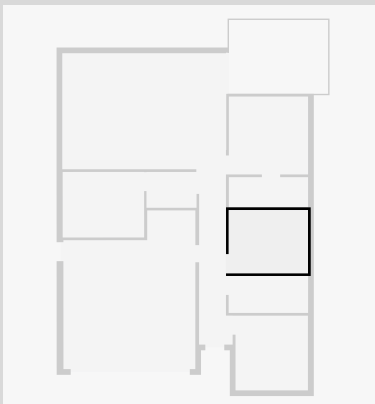
## Bathroom

Width: 1.62 m  
Length: 3.48 m  
Area: 5.64 m<sup>2</sup>  
Perimeter: 10.20 m



## Bedroom

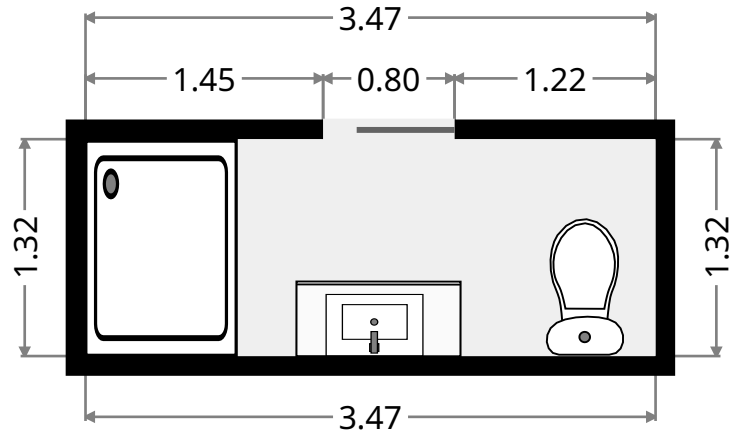
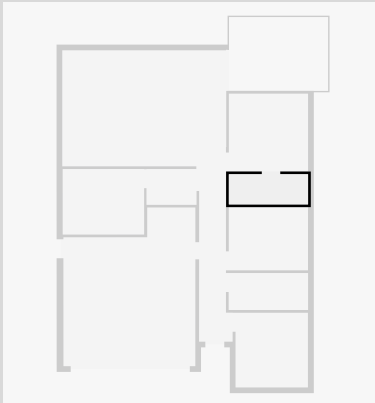
Width: 2.77 m  
Length: 3.47 m  
Area: 9.60 m<sup>2</sup>  
Perimeter: 12.47 m



# 29 Brodie Drive

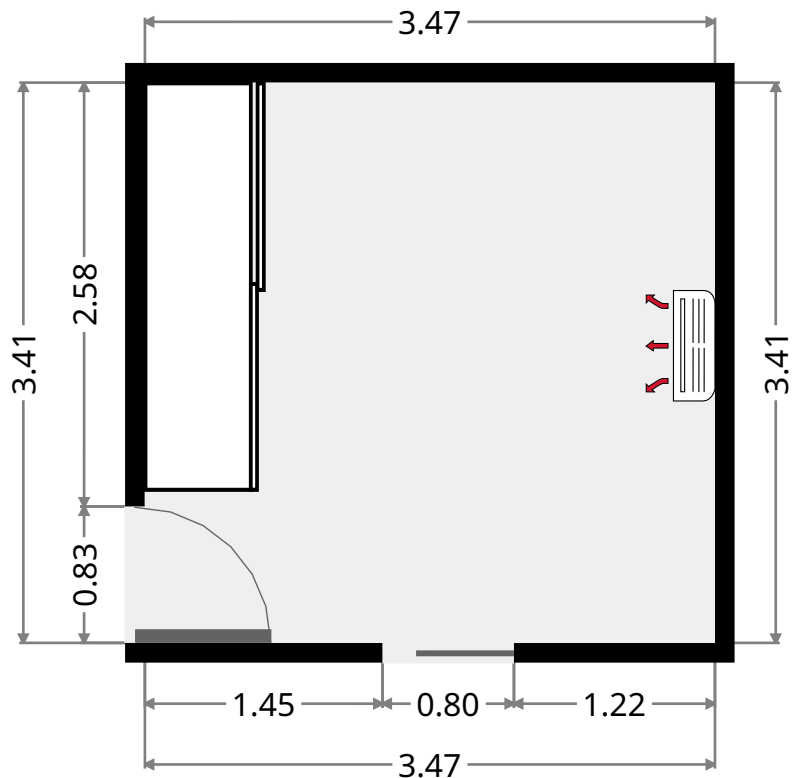
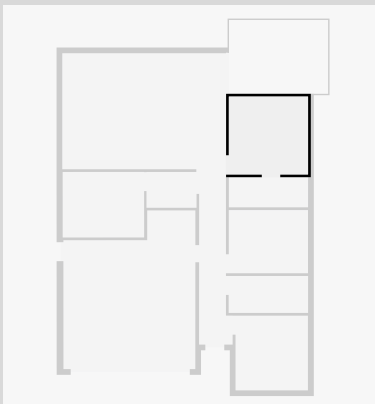
## Bathroom

Width: 1.32 m  
 Length: 3.47 m  
 Area: 4.58 m<sup>2</sup>  
 Perimeter: 9.58 m

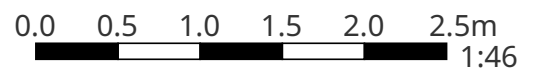


## Master Bedroom

Width: 3.41 m  
 Length: 3.47 m  
 Area: 11.83 m<sup>2</sup>  
 Perimeter: 13.76 m



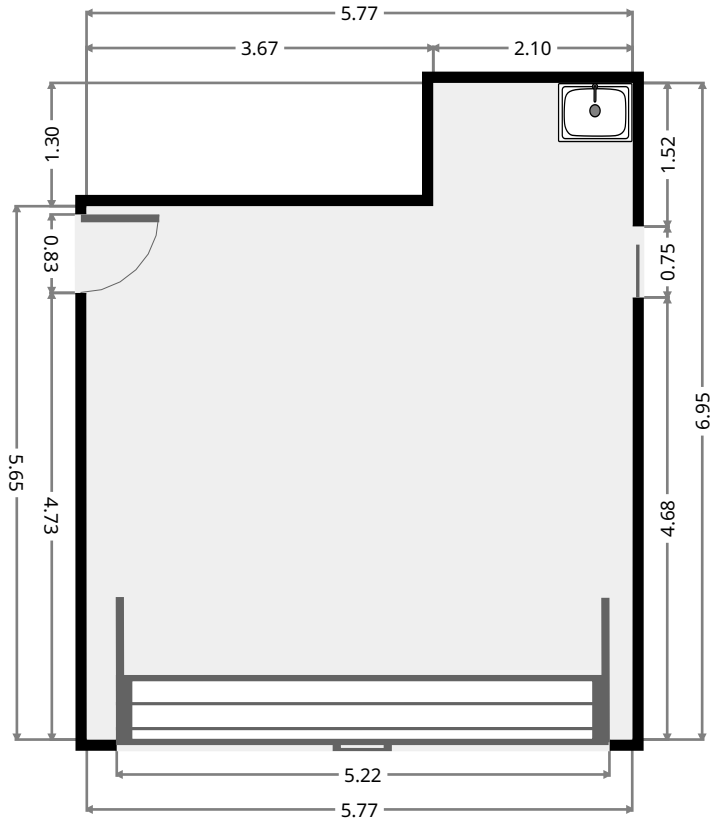
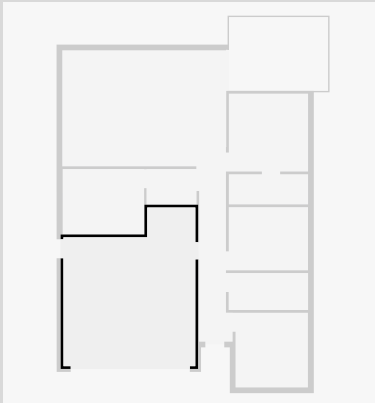
THIS FLOORPLAN IS PROVIDED WITHOUT WARRANTY OF ANY KIND. SENSOPIA DISCLAIMS ANY WARRANTY INCLUDING, WITHOUT LIMITATION, SATISFACTORY QUALITY OR ACCURACY OF DIMENSIONS.



# 29 Brodie Drive

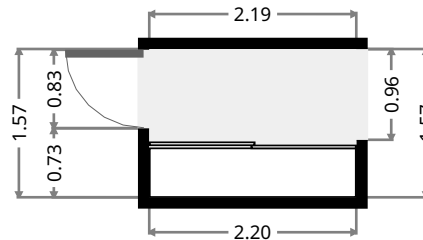
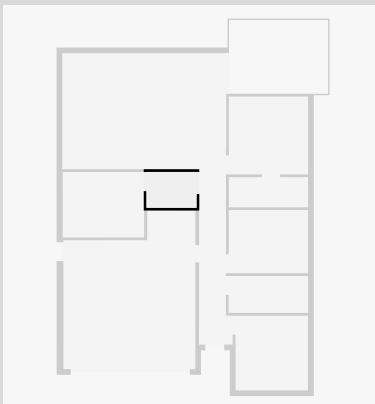
## Garage

Width: 5.77 m  
 Length: 6.95 m  
 Area: 35.36 m<sup>2</sup>  
 Perimeter: 25.45 m



## Laundry Room

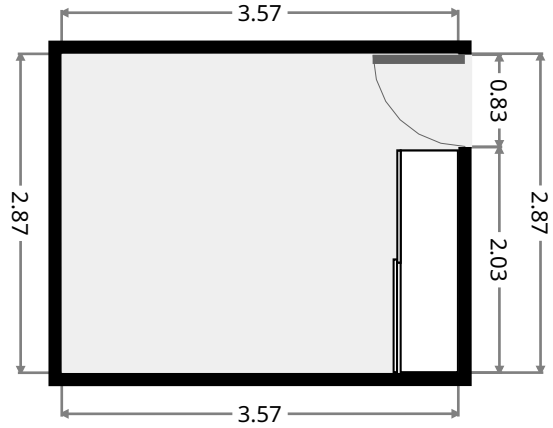
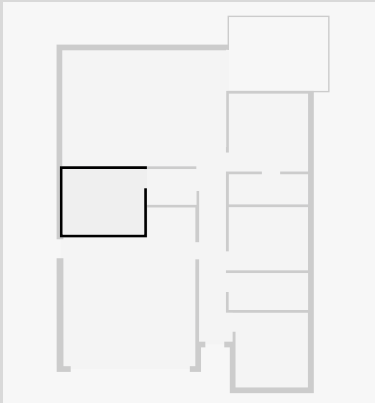
Width: 1.57 m  
 Length: 2.19 m  
 Area: 3.44 m<sup>2</sup>  
 Perimeter: 7.52 m



# 29 Brodie Drive

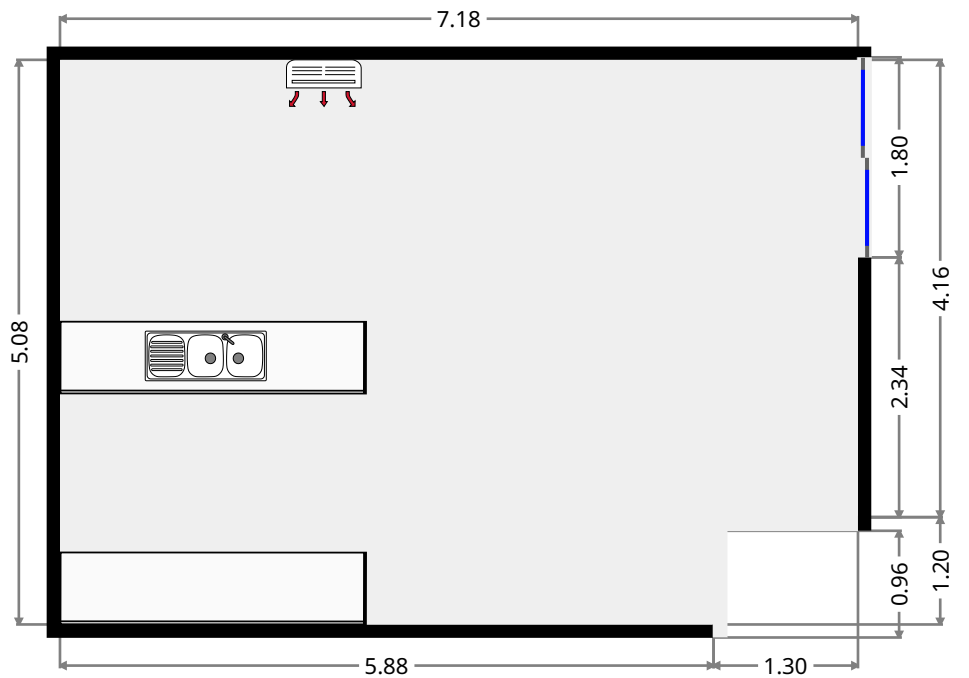
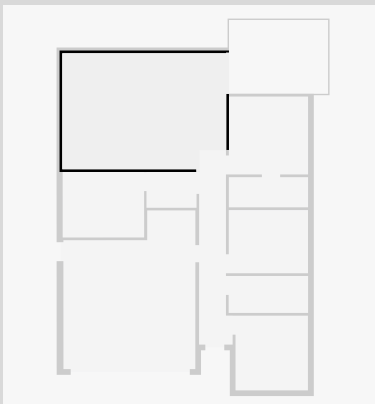
## Bedroom

Width: 2.87 m  
Length: 3.57 m  
Area: 10.24 m<sup>2</sup>  
Perimeter: 12.87 m

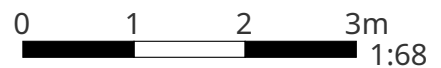


## Kitchen

Width: 5.08 m  
Length: 7.18 m  
Area: 35.22 m<sup>2</sup>  
Perimeter: 24.52 m



THIS FLOORPLAN IS PROVIDED WITHOUT WARRANTY OF ANY KIND. SENSOPIA DISCLAIMS ANY WARRANTY INCLUDING, WITHOUT LIMITATION, SATISFACTORY QUALITY OR ACCURACY OF DIMENSIONS.



# 29 Brodie Drive

## Patio

Width: 3.23 m  
Length: 4.34 m  
Area: 14.05 m<sup>2</sup>  
Perimeter: 15.15 m

