

# 289 Rockonia Road

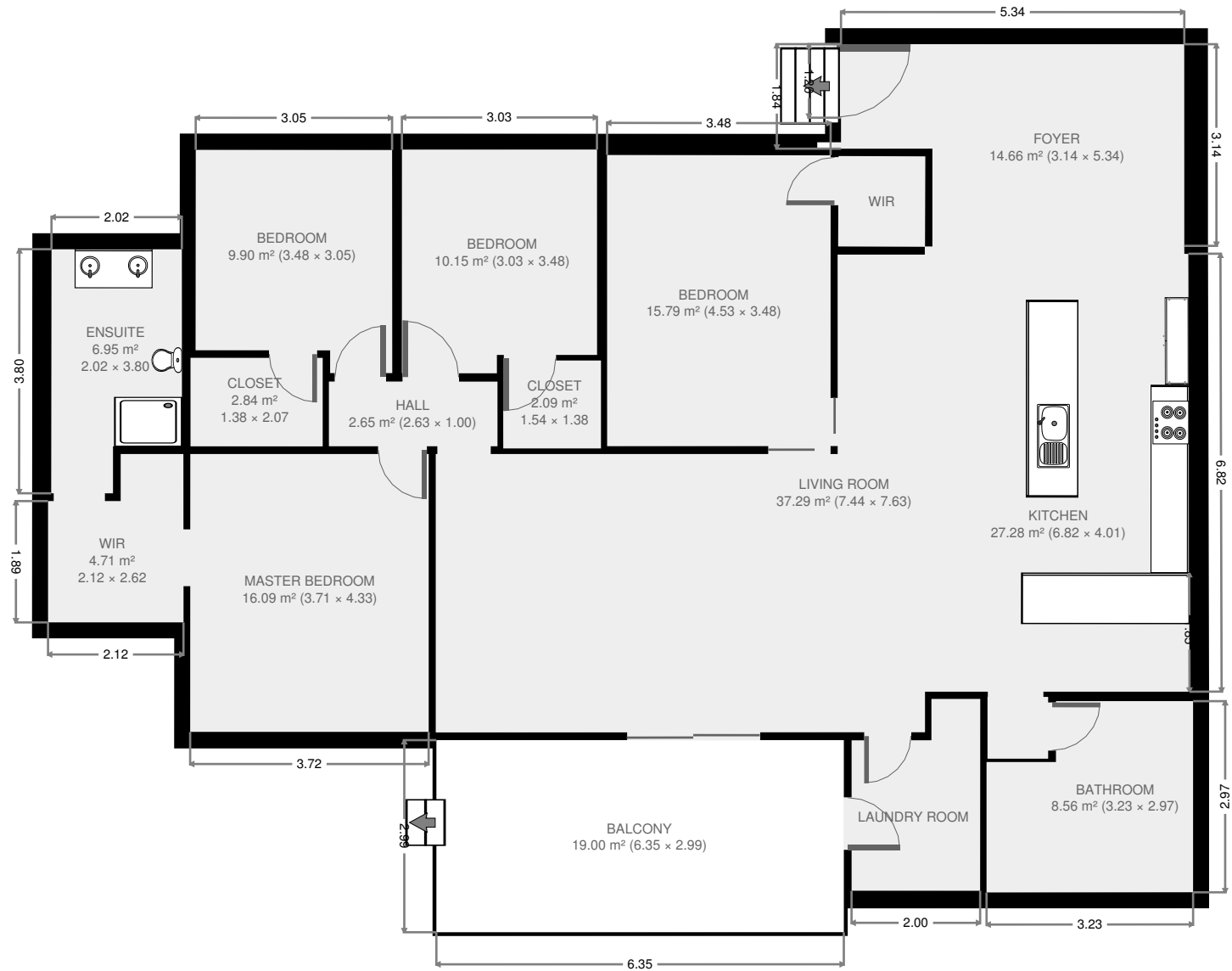


289 Rockonia Rd, Koongal, QLD, Australia 4701

Ray White Rockhampton  
david.bell@raywhite.com  
(07)4923 0000  
2016-09-19

**167** m<sup>2</sup>  
**1** Floor  
**12** Rooms  
**4** Bedrooms  
**2** Bathrooms

## Ground Floor

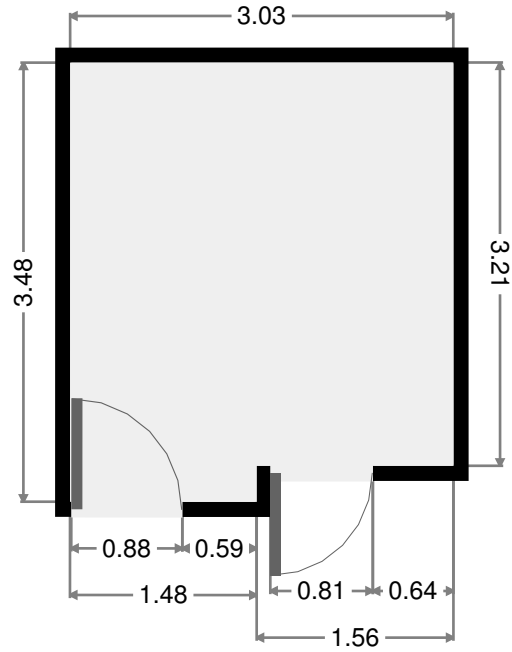
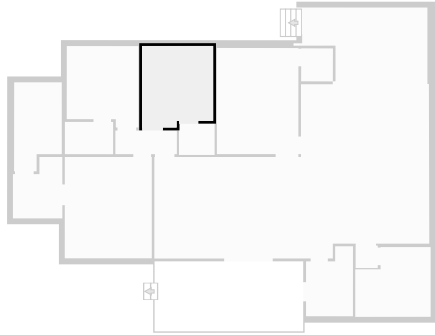


THIS FLOORPLAN IS PROVIDED WITHOUT WARRANTY OF ANY KIND. RAY WHITE ROCKHAMPTON DISCLAIMS ANY WARRANTY INCLUDING, WITHOUT LIMITATION, SATISFACTORY QUALITY OR ACCURACY OF DIMENSIONS. ALL CARE IS TAKEN TO ENSURE ACCURACY BUT MEASUREMENTS, POSITIONING AND PLACEMENTS CANNOT BE GUARANTEED.



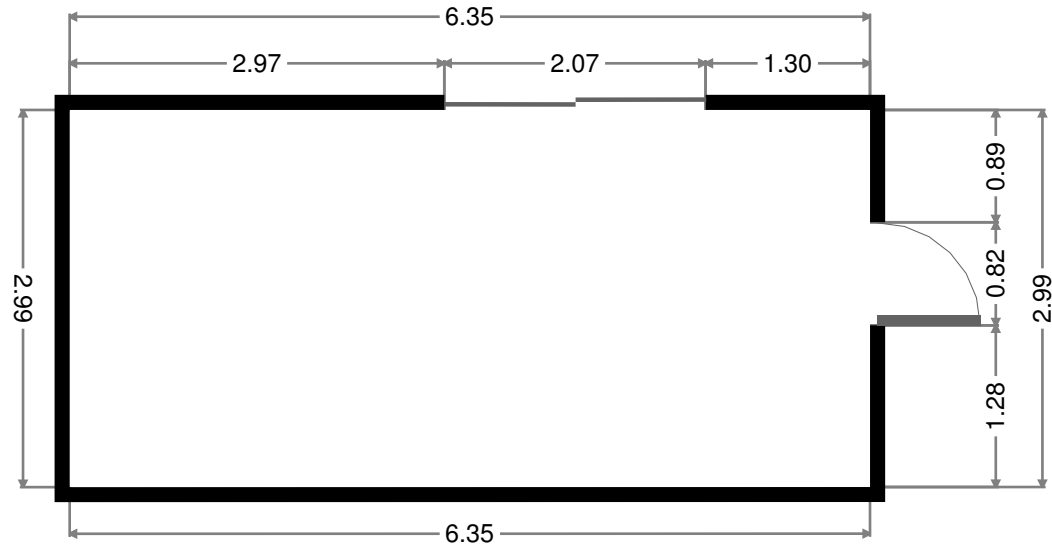
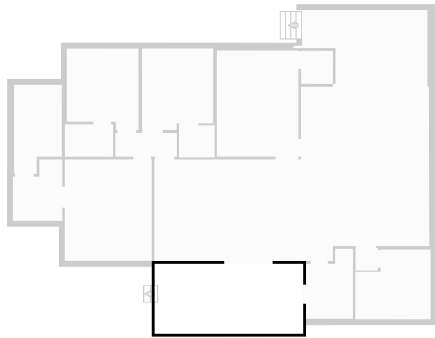
# Bedroom

Width: 3.03 m  
 Length: 3.48 m  
 Area: 10.15 m<sup>2</sup>  
 Perimeter: 13.05 m  
 Ceiling Height: 2.30 m



# Balcony

Width: 2.99 m  
 Length: 6.35 m  
 Area: 19.00 m<sup>2</sup>  
 Perimeter: 18.69 m

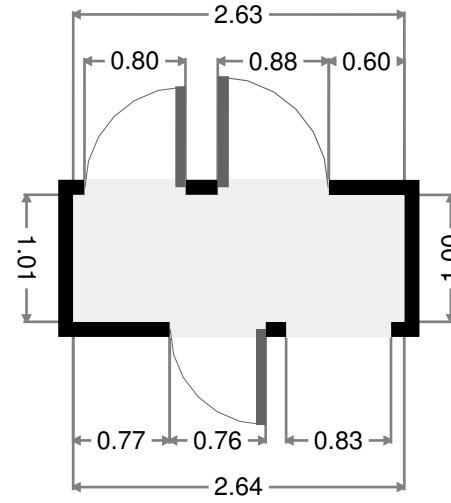
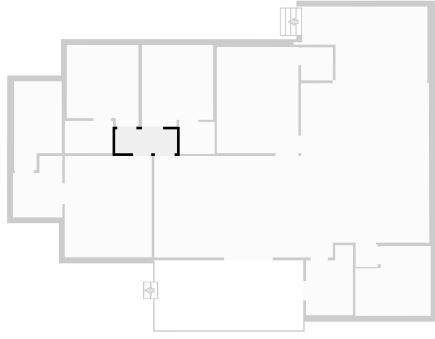


THIS FLOORPLAN IS PROVIDED WITHOUT WARRANTY OF ANY KIND. RAY WHITE ROCKHAMPTON DISCLAIMS ANY WARRANTY INCLUDING, WITHOUT LIMITATION, SATISFACTORY QUALITY OR ACCURACY OF DIMENSIONS. ALL CARE IS TAKEN TO ENSURE ACCURACY BUT MEASUREMENTS, POSITIONING AND PLACEMENTS CANNOT BE GUARANTEED.



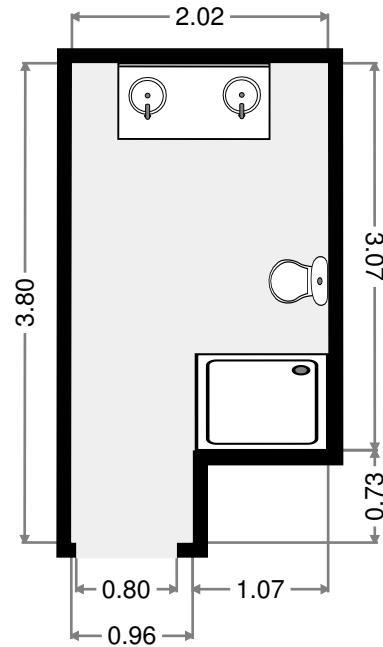
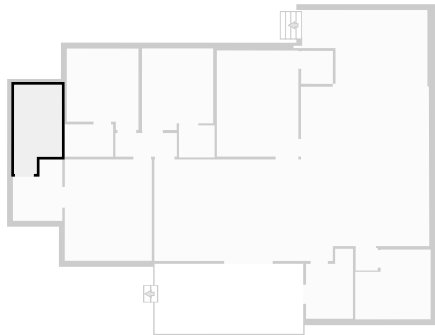
# Hall

Width: 1.00 m  
 Length: 2.63 m  
 Area: 2.65 m<sup>2</sup>  
 Perimeter: 7.27 m



# Ensuite

Width: 2.02 m  
 Length: 3.80 m  
 Area: 6.95 m<sup>2</sup>  
 Perimeter: 11.68 m  
 Ceiling Height: 2.30 m

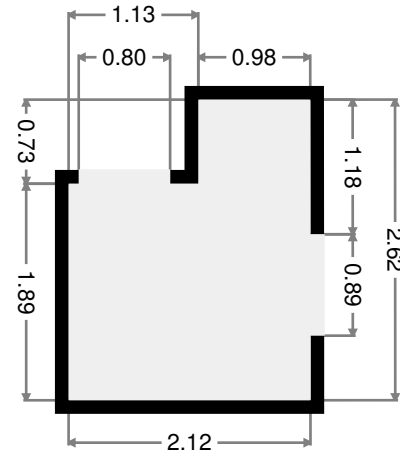
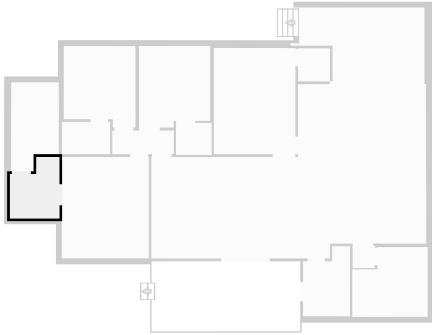


THIS FLOORPLAN IS PROVIDED WITHOUT WARRANTY OF ANY KIND. RAY WHITE ROCKHAMPTON DISCLAIMS ANY WARRANTY INCLUDING, WITHOUT LIMITATION, SATISFACTORY QUALITY OR ACCURACY OF DIMENSIONS. ALL CARE IS TAKEN TO ENSURE ACCURACY BUT MEASUREMENTS, POSITIONING AND PLACEMENTS CANNOT BE GUARANTEED.



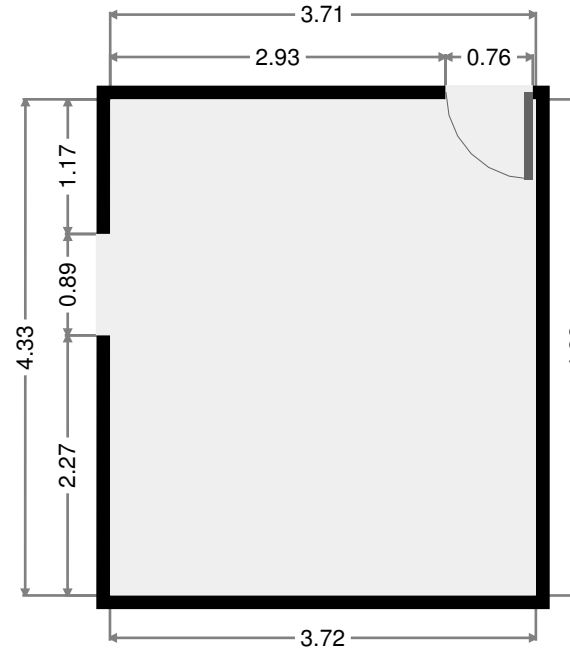
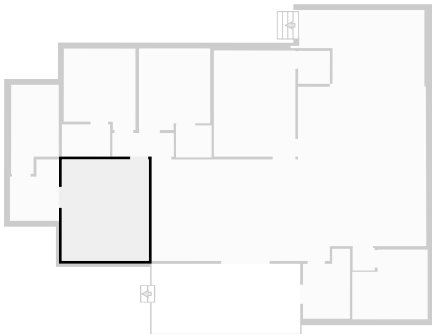
# WIR

Width: 2.12 m  
Length: 2.62 m  
Area: 4.71 m<sup>2</sup>  
Perimeter: 9.47 m  
Ceiling Height: 2.30 m



# Master Bedroom

Width: 3.71 m  
Length: 4.33 m  
Area: 16.09 m<sup>2</sup>  
Perimeter: 16.09 m  
Ceiling Height: 2.30 m

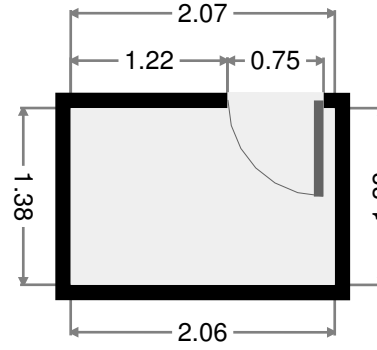
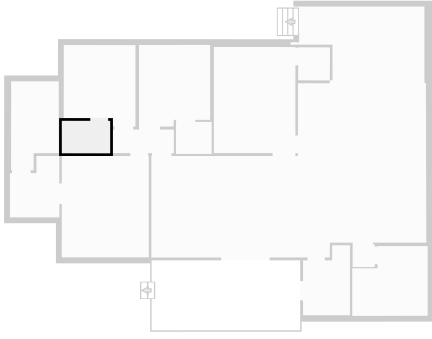


THIS FLOORPLAN IS PROVIDED WITHOUT WARRANTY OF ANY KIND. RAY WHITE ROCKHAMPTON DISCLAIMS ANY WARRANTY INCLUDING, WITHOUT LIMITATION, SATISFACTORY QUALITY OR ACCURACY OF DIMENSIONS. ALL CARE IS TAKEN TO ENSURE ACCURACY BUT MEASUREMENTS, POSITIONING AND PLACEMENTS CANNOT BE GUARANTEED.



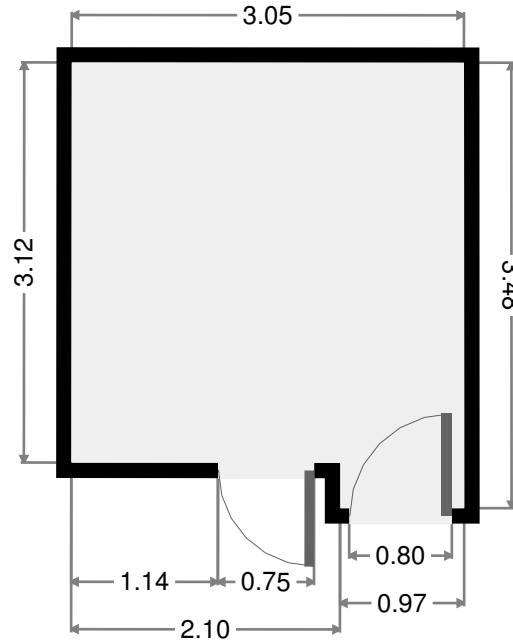
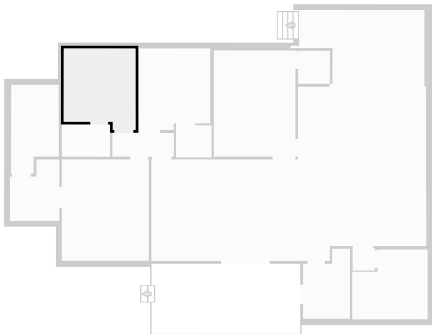
# Closet

Width: 1.38 m  
 Length: 2.07 m  
 Area: 2.84 m<sup>2</sup>  
 Perimeter: 6.88 m



# Bedroom

Width: 3.05 m  
 Length: 3.48 m  
 Area: 9.90 m<sup>2</sup>  
 Perimeter: 13.08 m  
 Ceiling Height: 2.30 m

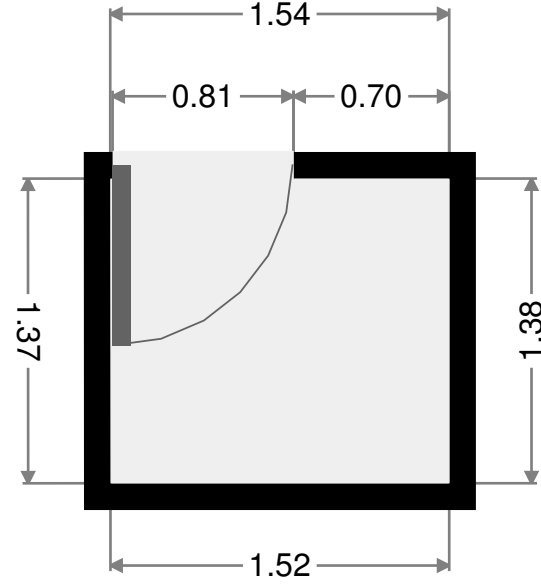
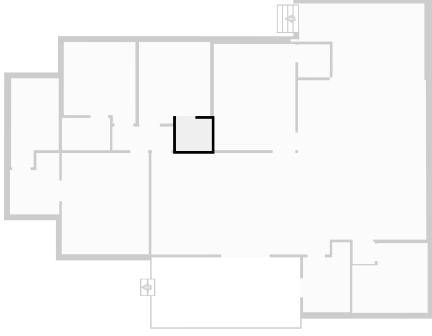


THIS FLOORPLAN IS PROVIDED WITHOUT WARRANTY OF ANY KIND. RAY WHITE ROCKHAMPTON DISCLAIMS ANY WARRANTY INCLUDING, WITHOUT LIMITATION, SATISFACTORY QUALITY OR ACCURACY OF DIMENSIONS. ALL CARE IS TAKEN TO ENSURE ACCURACY BUT MEASUREMENTS, POSITIONING AND PLACEMENTS CANNOT BE GUARANTEED.



# Closet

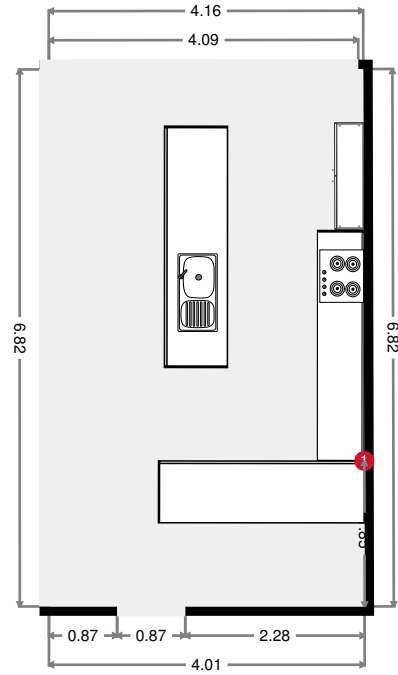
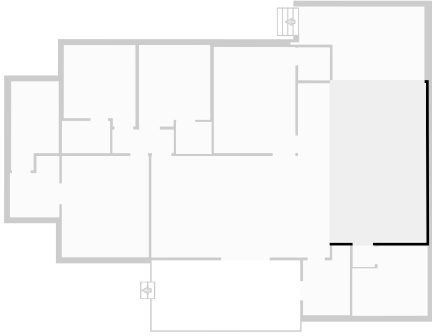
Width: 1.38 m  
Length: 1.54 m  
Area: 2.09 m<sup>2</sup>  
Perimeter: 5.79 m



THIS FLOORPLAN IS PROVIDED WITHOUT WARRANTY OF ANY KIND. RAY WHITE ROCKHAMPTON DISCLAIMS ANY WARRANTY INCLUDING, WITHOUT LIMITATION, SATISFACTORY QUALITY OR ACCURACY OF DIMENSIONS. ALL CARE IS TAKEN TO ENSURE ACCURACY BUT MEASUREMENTS, POSITIONING AND PLACEMENTS CANNOT BE GUARANTEED.

# Kitchen

Width: 4.01 m  
Length: 6.82 m  
Area: 27.28 m<sup>2</sup>  
Perimeter: 21.64 m  
Ceiling Height: 2.30 m



1



Kitchen Counter

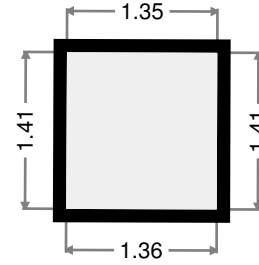
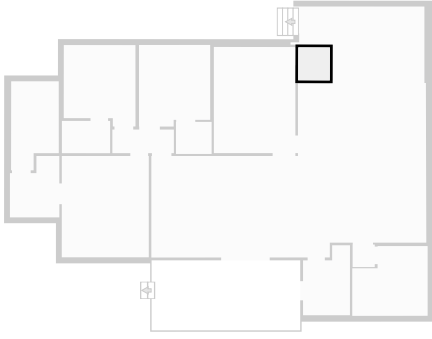
- Height: 0.87 m



THIS FLOORPLAN IS PROVIDED WITHOUT WARRANTY OF ANY KIND. RAY WHITE ROCKHAMPTON DISCLAIMS ANY WARRANTY INCLUDING, WITHOUT LIMITATION, SATISFACTORY QUALITY OR ACCURACY OF DIMENSIONS. ALL CARE IS TAKEN TO ENSURE ACCURACY BUT MEASUREMENTS, POSITIONING AND PLACEMENTS CANNOT BE GUARANTEED.

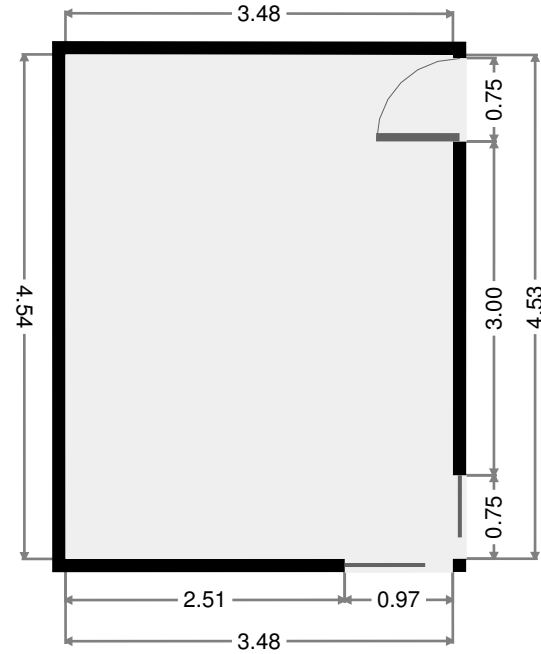
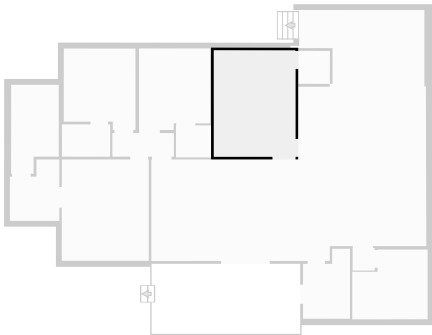
# WIR

Width: 1.35 m  
Length: 1.41 m  
Area: 1.91 m<sup>2</sup>  
Perimeter: 5.52 m



# Bedroom

Width: 3.48 m  
Length: 4.53 m  
Area: 15.79 m<sup>2</sup>  
Perimeter: 16.03 m  
Ceiling Height: 2.30 m



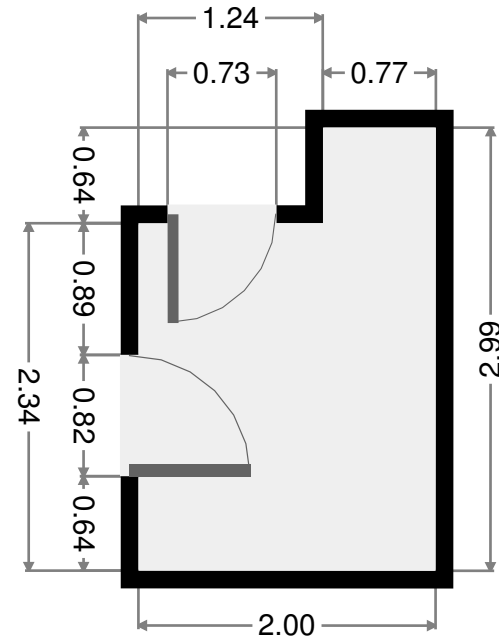
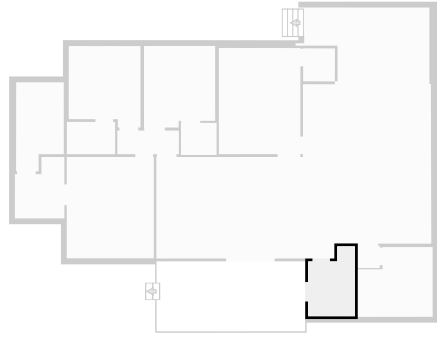
THIS FLOORPLAN IS PROVIDED WITHOUT WARRANTY OF ANY KIND. RAY WHITE ROCKHAMPTON DISCLAIMS ANY WARRANTY INCLUDING, WITHOUT LIMITATION, SATISFACTORY QUALITY OR ACCURACY OF DIMENSIONS. ALL CARE IS TAKEN TO ENSURE ACCURACY BUT MEASUREMENTS, POSITIONING AND PLACEMENTS CANNOT BE GUARANTEED.





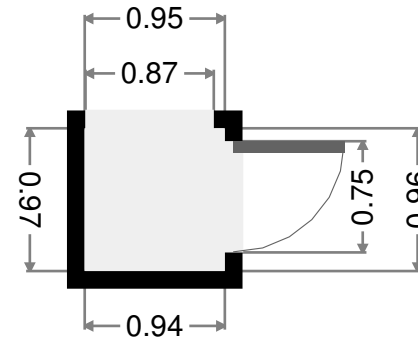
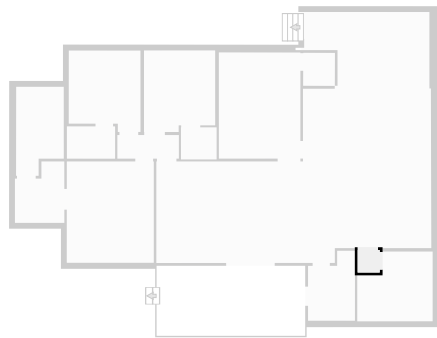
# Laundry Room

Width: 2.00 m  
 Length: 2.99 m  
 Area: 5.19 m<sup>2</sup>  
 Perimeter: 9.99 m  
 Ceiling Height: 2.30 m

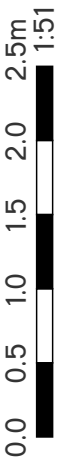


# Bathroom entrance

Width: 0.95 m  
 Length: 0.96 m  
 Area: 0.91 m<sup>2</sup>  
 Perimeter: 3.82 m

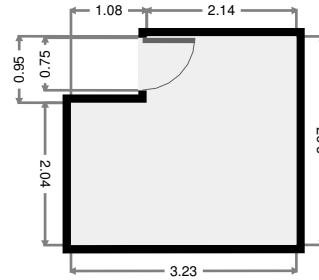
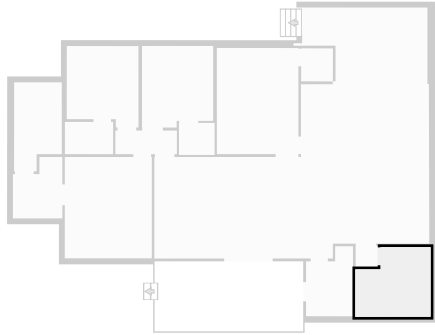


THIS FLOORPLAN IS PROVIDED WITHOUT WARRANTY OF ANY KIND. RAY WHITE ROCKHAMPTON DISCLAIMS ANY WARRANTY INCLUDING, WITHOUT LIMITATION, SATISFACTORY QUALITY OR ACCURACY OF DIMENSIONS. ALL CARE IS TAKEN TO ENSURE ACCURACY BUT MEASUREMENTS, POSITIONING AND PLACEMENTS CANNOT BE GUARANTEED.



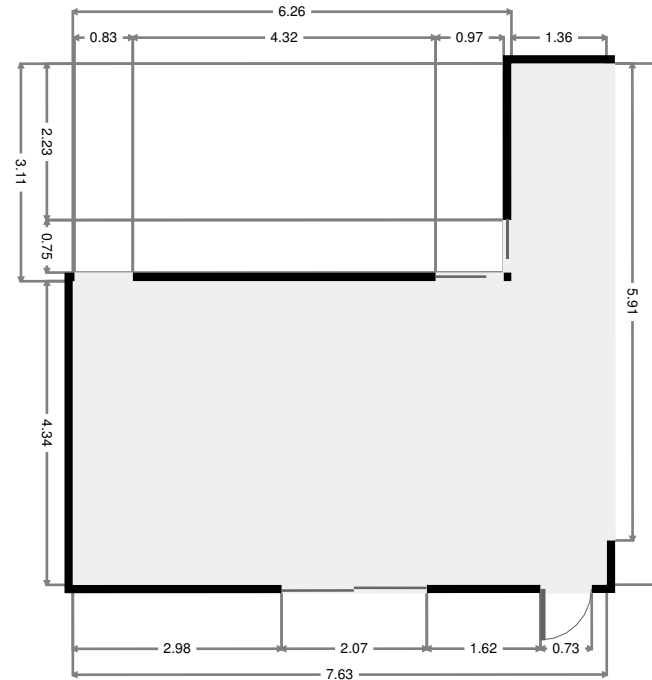
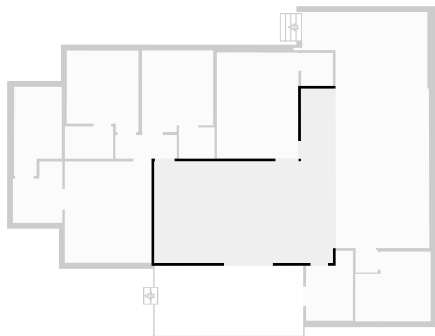
# Bathroom

Width: 2.97 m  
 Length: 3.23 m  
 Area: 8.56 m<sup>2</sup>  
 Perimeter: 12.40 m  
 Ceiling Height: 2.30 m



# Living Room

Width: 7.44 m  
 Length: 7.63 m  
 Area: 37.29 m<sup>2</sup>  
 Perimeter: 30.14 m  
 Ceiling Height: 2.30 m

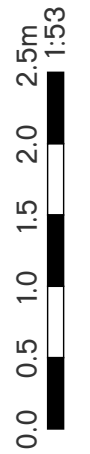
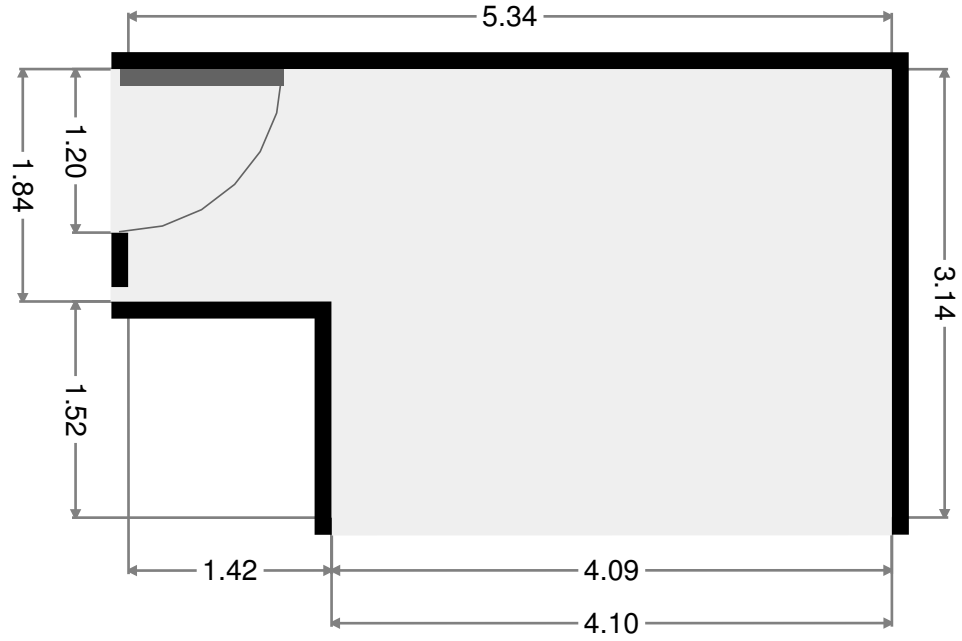
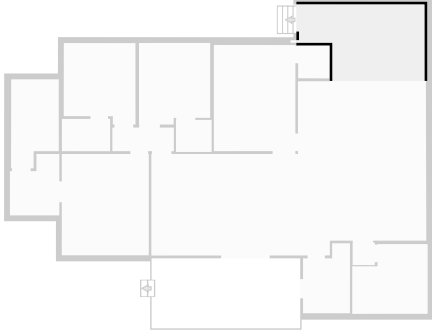


THIS FLOORPLAN IS PROVIDED WITHOUT WARRANTY OF ANY KIND. RAY WHITE ROCKHAMPTON DISCLAIMS ANY WARRANTY INCLUDING, WITHOUT LIMITATION, SATISFACTORY QUALITY OR ACCURACY OF DIMENSIONS. ALL CARE IS TAKEN TO ENSURE ACCURACY BUT MEASUREMENTS, POSITIONING AND PLACEMENTS CANNOT BE GUARANTEED.



# Foyer

Width: 3.14 m  
Length: 5.34 m  
Area: 14.66 m<sup>2</sup>  
Perimeter: 16.99 m  
Ceiling Height: 2.30 m



THIS FLOORPLAN IS PROVIDED WITHOUT WARRANTY OF ANY KIND. RAY WHITE ROCKHAMPTON DISCLAIMS ANY WARRANTY INCLUDING, WITHOUT LIMITATION, SATISFACTORY QUALITY OR ACCURACY OF DIMENSIONS. ALL CARE IS TAKEN TO ENSURE ACCURACY BUT MEASUREMENTS, POSITIONING AND PLACEMENTS CANNOT BE GUARANTEED.