

# 289 Everingham Avenue

**SUBMITTED BY**

Ray White Rockhampton Casey  
stockers@cqoz.com

---

**CREATED ON**

2022-07-18

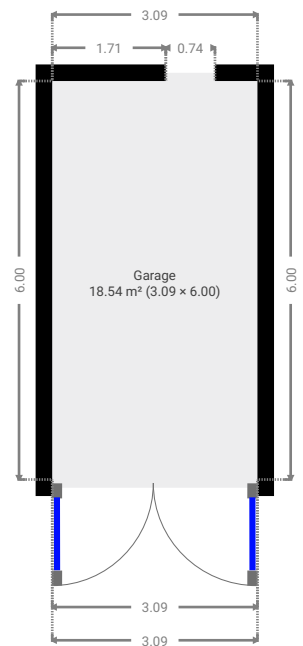
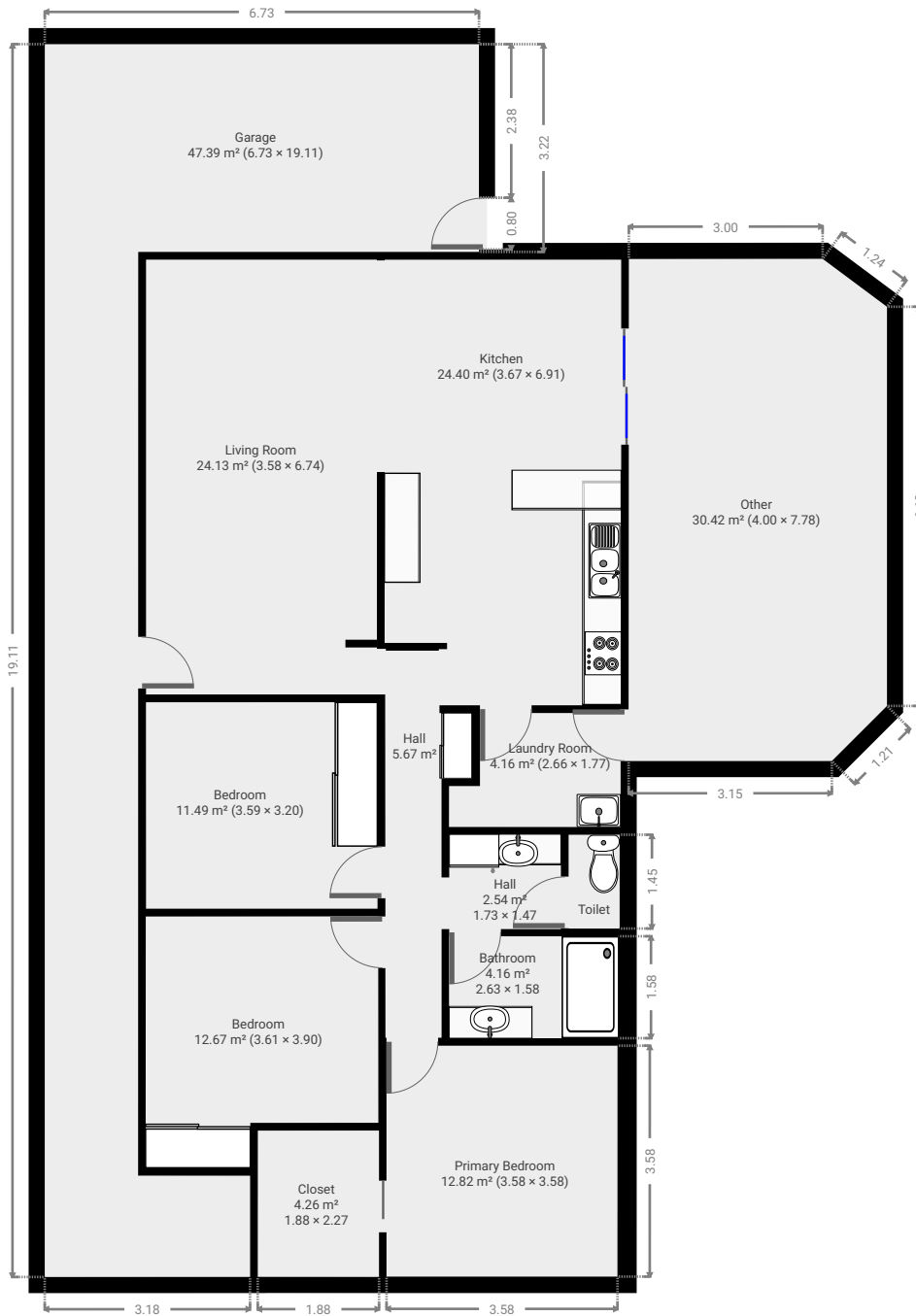
---

**Floors**

1

---

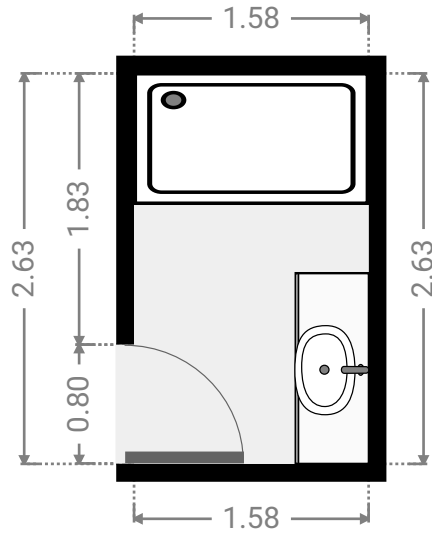
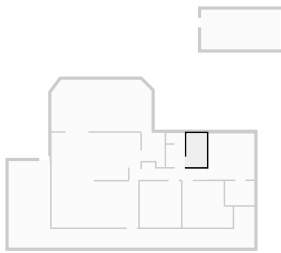
▼ Ground Floor



FLOORS: 1

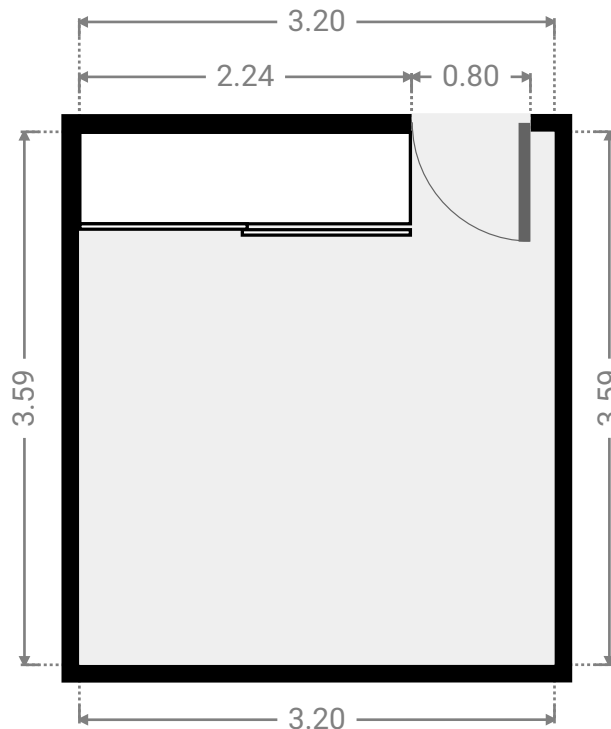
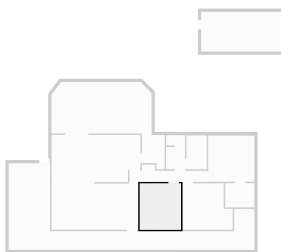
▼ **Bathroom**  
Ground Floor

WIDTH: 1.58 m • LENGTH: 2.63 m  
AREA: 4.16 m<sup>2</sup> • PERIMETER: 8.42 m



▼ **Bedroom**  
Ground Floor

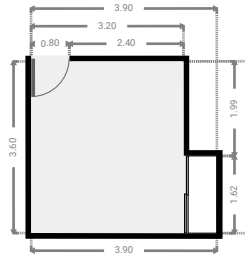
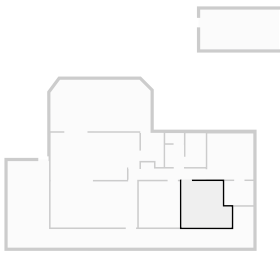
WIDTH: 3.20 m • LENGTH: 3.59 m  
AREA: 11.49 m<sup>2</sup> • PERIMETER: 13.58 m



FLOORS: 1

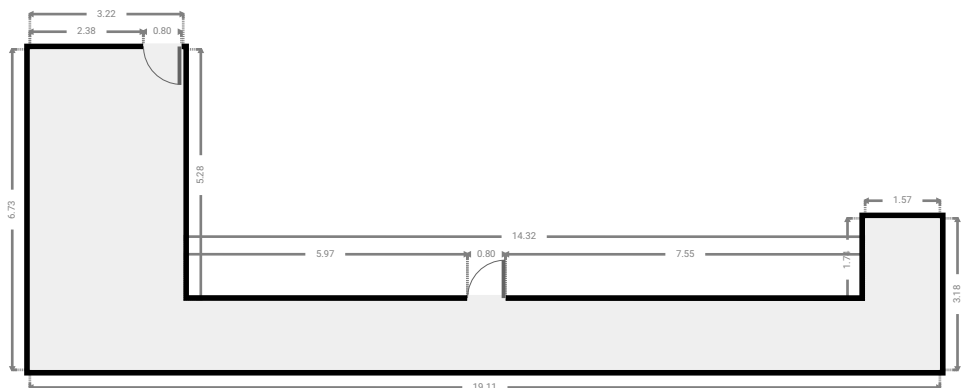
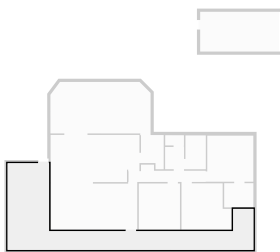
▼ **Bedroom**  
Ground Floor

WIDTH: 3.90 m • LENGTH: 3.61 m  
AREA: 12.67 m<sup>2</sup> • PERIMETER: 15.01 m



▼ **Garage**  
Ground Floor

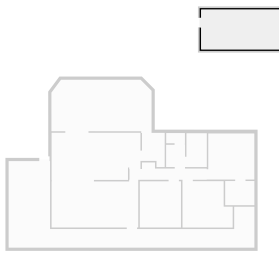
WIDTH: 19.11 m • LENGTH: 6.73 m  
AREA: 47.39 m<sup>2</sup> • PERIMETER: 55.15 m



FLOORS: 1

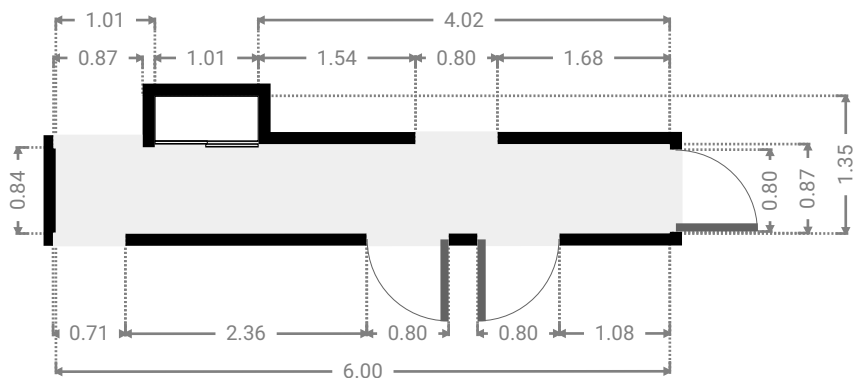
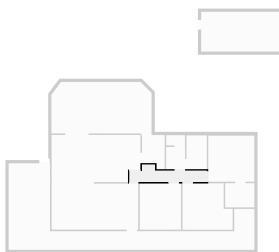
▼ Garage  
Ground Floor

WIDTH: 6.00 m • LENGTH: 3.09 m  
AREA: 18.54 m<sup>2</sup> • PERIMETER: 18.18 m



▼ Hall  
Ground Floor

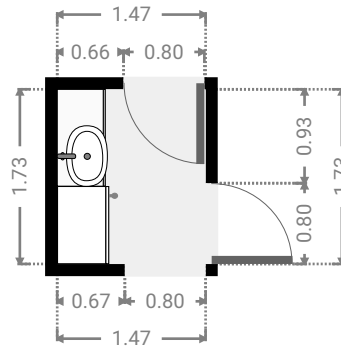
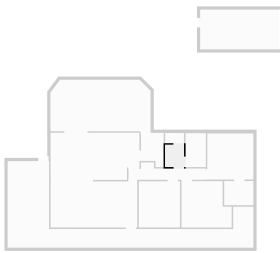
WIDTH: 6.00 m • LENGTH: 1.35 m  
AREA: 5.67 m<sup>2</sup> • PERIMETER: 14.69 m



FLOORS: 1

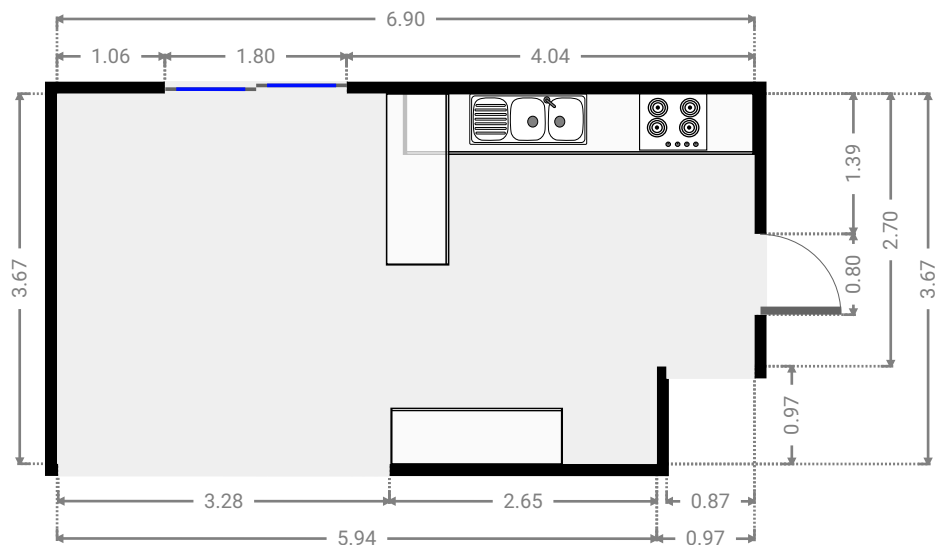
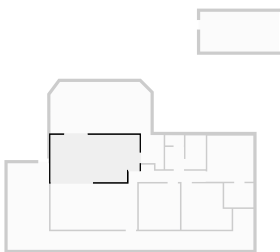
▼ **Hall**  
Ground Floor

WIDTH: 1.47 m • LENGTH: 1.73 m  
AREA: 2.54 m<sup>2</sup> • PERIMETER: 6.40 m



▼ **Kitchen**  
Ground Floor

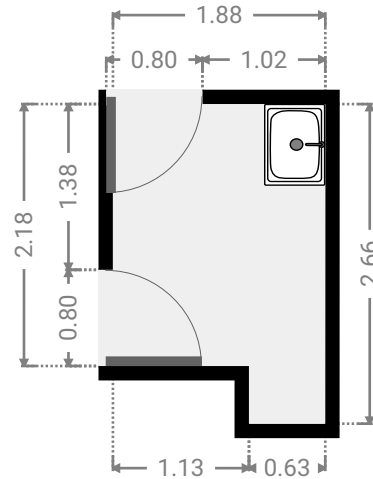
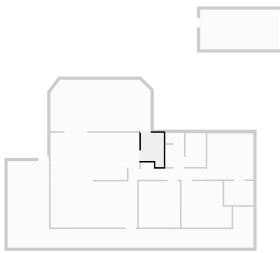
WIDTH: 6.91 m • LENGTH: 3.67 m  
AREA: 24.40 m<sup>2</sup> • PERIMETER: 21.15 m



FLOORS: 1

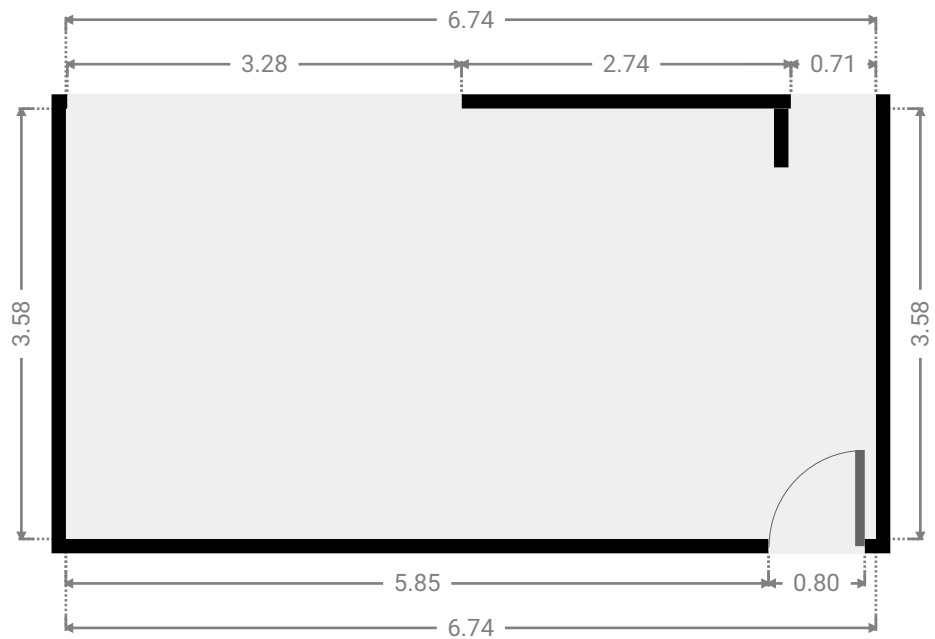
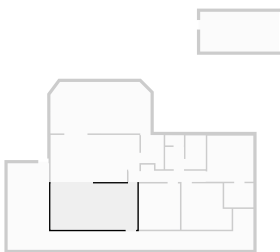
▼ **Laundry Room**  
Ground Floor

WIDTH: 1.77 m • LENGTH: 2.66 m  
AREA: 4.16 m<sup>2</sup> • PERIMETER: 8.85 m



▼ **Living Room**  
Ground Floor

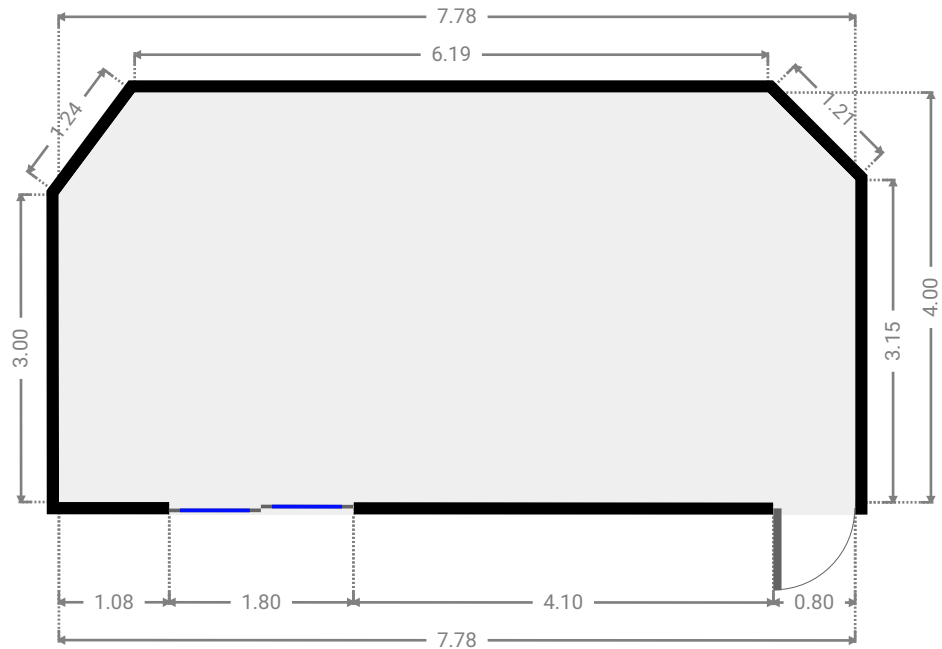
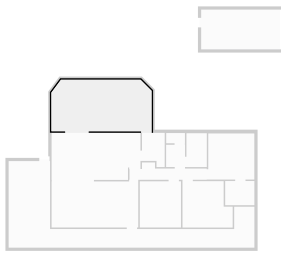
WIDTH: 6.74 m • LENGTH: 3.58 m  
AREA: 24.13 m<sup>2</sup> • PERIMETER: 20.64 m



FLOORS: 1

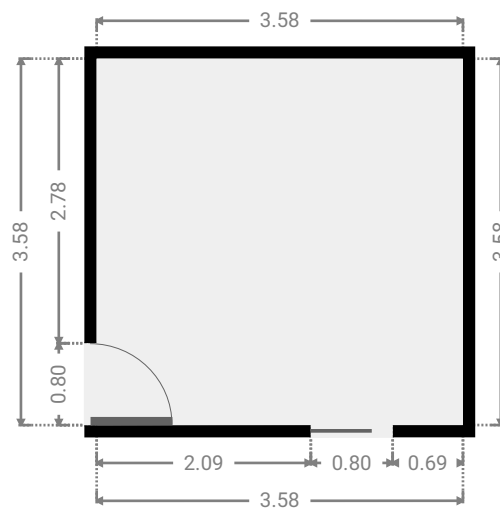
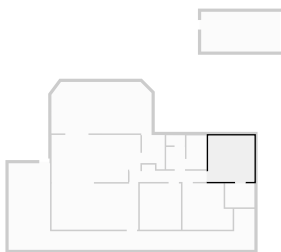
▼ **Other**  
Ground Floor

WIDTH: 7.78 m • LENGTH: 4.00 m  
AREA: 30.42 m<sup>2</sup> • PERIMETER: 22.58 m



▼ **Primary Bedroom**  
Ground Floor

WIDTH: 3.58 m • LENGTH: 3.58 m  
AREA: 12.82 m<sup>2</sup> • PERIMETER: 14.32 m

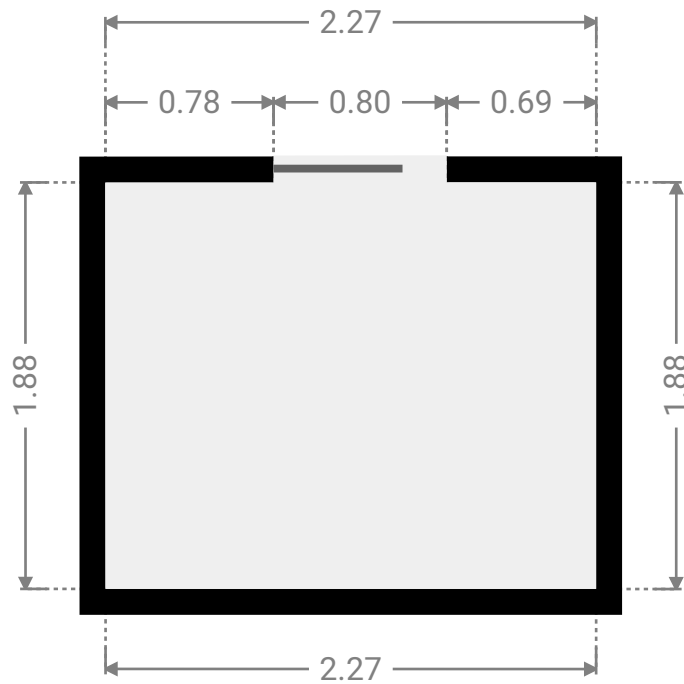
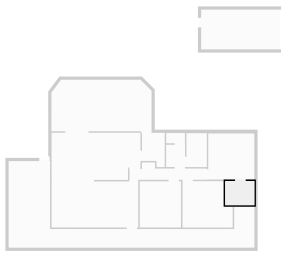




FLOORS: 1

▼ **Closet**  
Ground Floor

WIDTH: 2.27 m • LENGTH: 1.88 m  
AREA: 4.26 m<sup>2</sup> • PERIMETER: 8.30 m



▼ **Toilet**  
Ground Floor

WIDTH: 1.45 m • LENGTH: 0.79 m  
AREA: 1.15 m<sup>2</sup> • PERIMETER: 4.49 m

