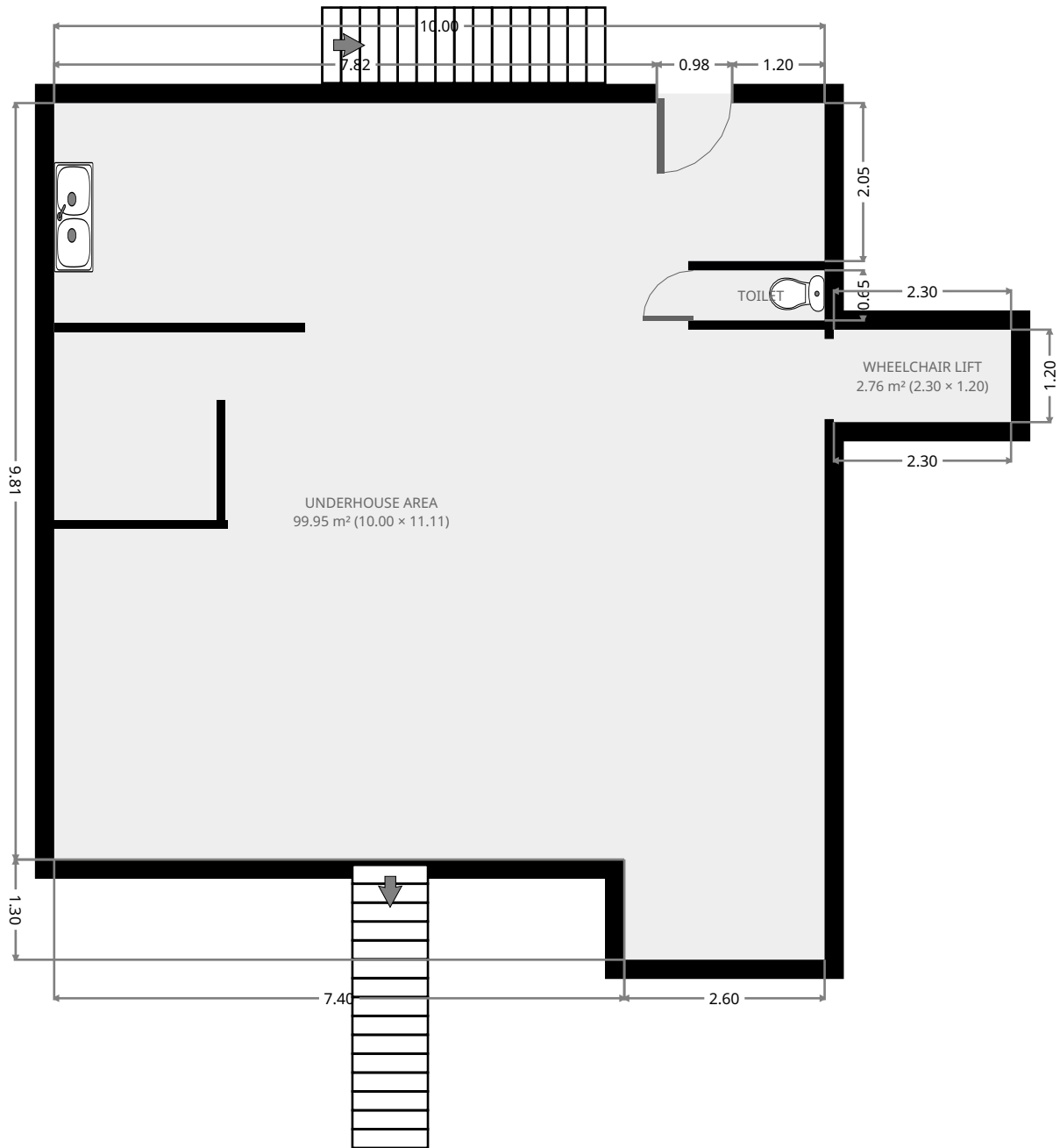


288 Berserker Street

Ground Floor



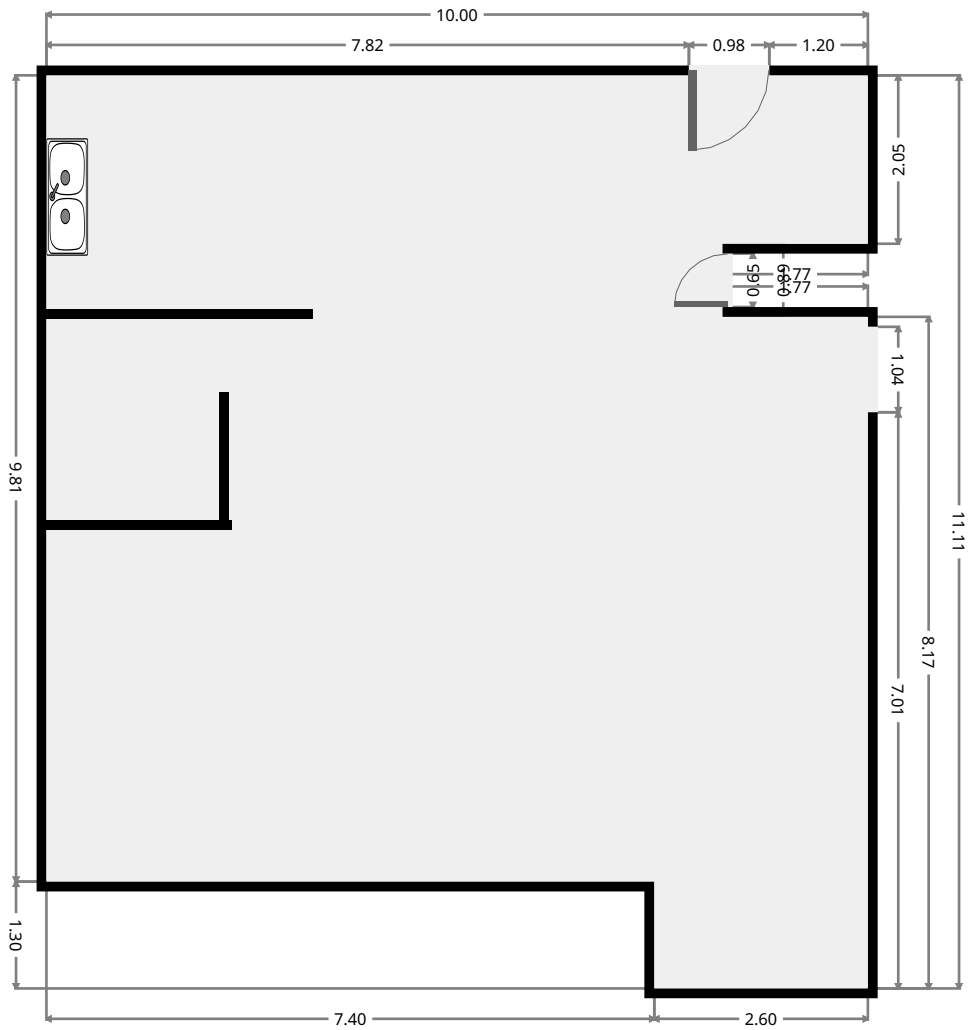
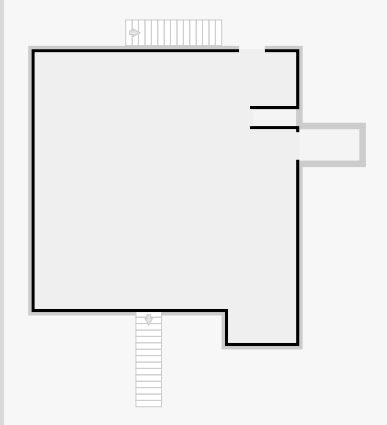
THIS FLOORPLAN IS PROVIDED WITHOUT WARRANTY OF ANY KIND. SENSOPIA DISCLAIMS ANY WARRANTY INCLUDING, WITHOUT LIMITATION, SATISFACTORY QUALITY OR ACCURACY OF DIMENSIONS.



288 Berserker Street

Underhouse Area

Width: 10.00 m
Length: 11.11 m
Area: 99.95 m²
Perimeter: 45.77 m



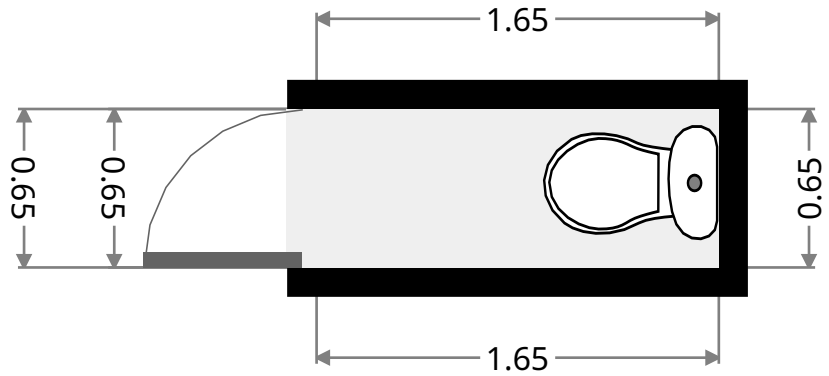
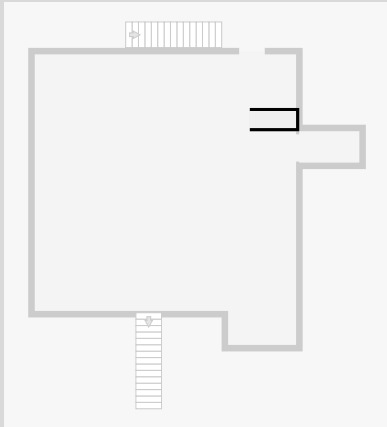
THIS FLOORPLAN IS PROVIDED WITHOUT WARRANTY OF ANY KIND. SENSOPIA DISCLAIMS ANY WARRANTY INCLUDING, WITHOUT LIMITATION, SATISFACTORY QUALITY OR ACCURACY OF DIMENSIONS.



288 Berserker Street

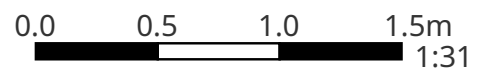
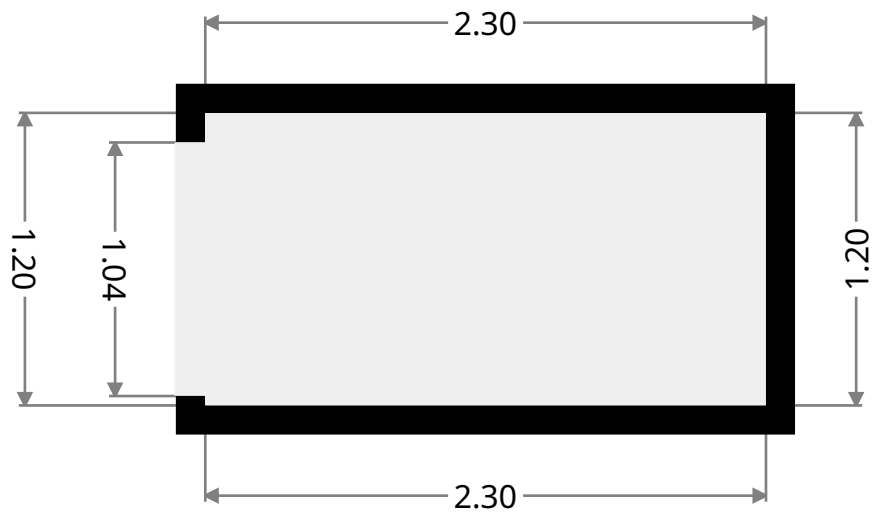
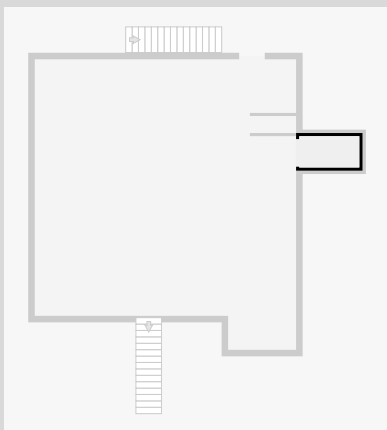
Toilet

Width: 0.65 m
Length: 1.65 m
Area: 1.07 m²
Perimeter: 4.60 m



Wheelchair Lift

Width: 1.20 m
Length: 2.30 m
Area: 2.76 m²
Perimeter: 7.00 m



288 Berserker Street

1st Floor



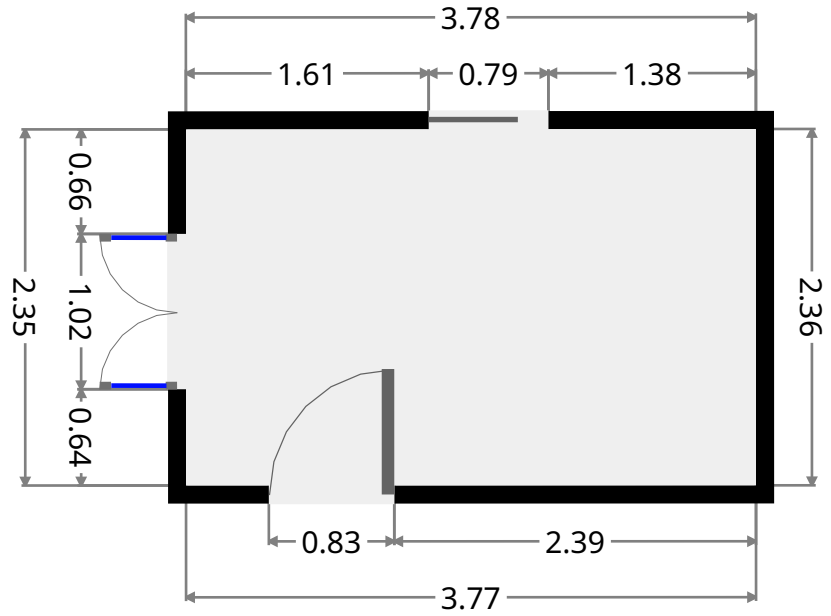
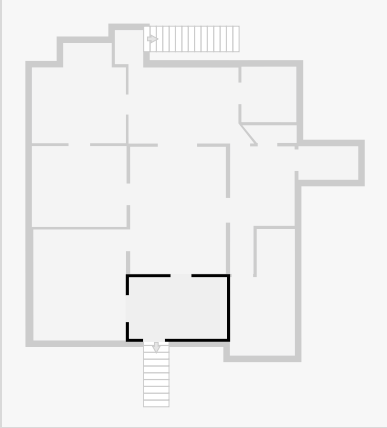
THIS FLOORPLAN IS PROVIDED WITHOUT WARRANTY OF ANY KIND. SENSOPIA DISCLAIMS ANY WARRANTY INCLUDING, WITHOUT LIMITATION, SATISFACTORY QUALITY OR ACCURACY OF DIMENSIONS.



288 Berserker Street

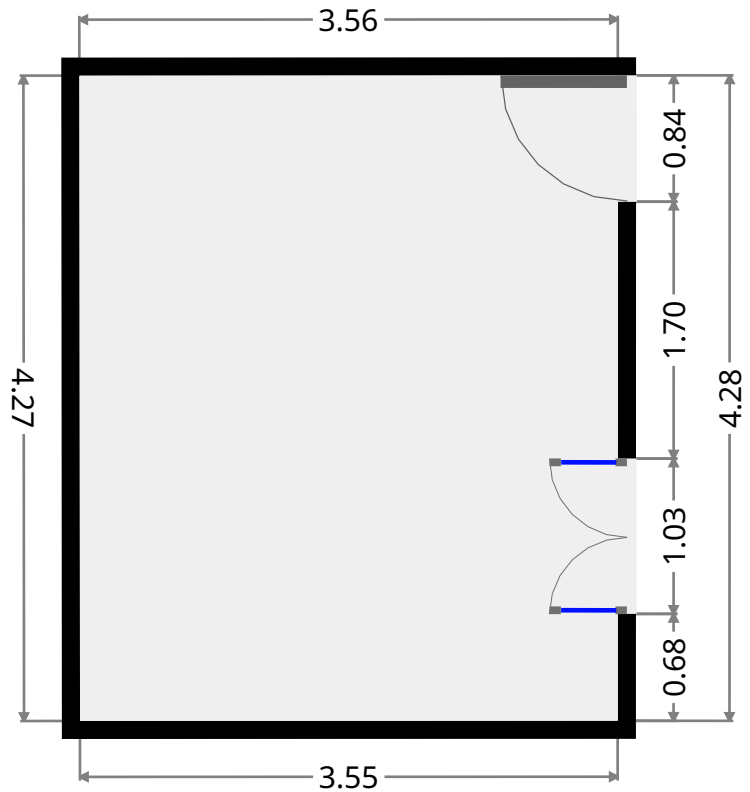
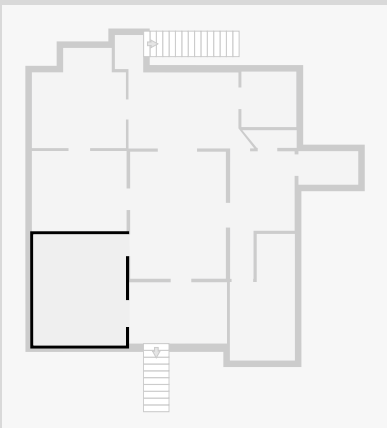
Sunroom

Width: 2.35 m
 Length: 3.77 m
 Area: 8.89 m²
 Perimeter: 12.26 m

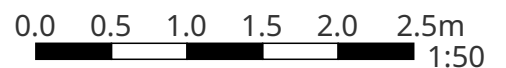


Bedroom

Width: 3.56 m
 Length: 4.28 m
 Area: 15.20 m²
 Perimeter: 15.66 m



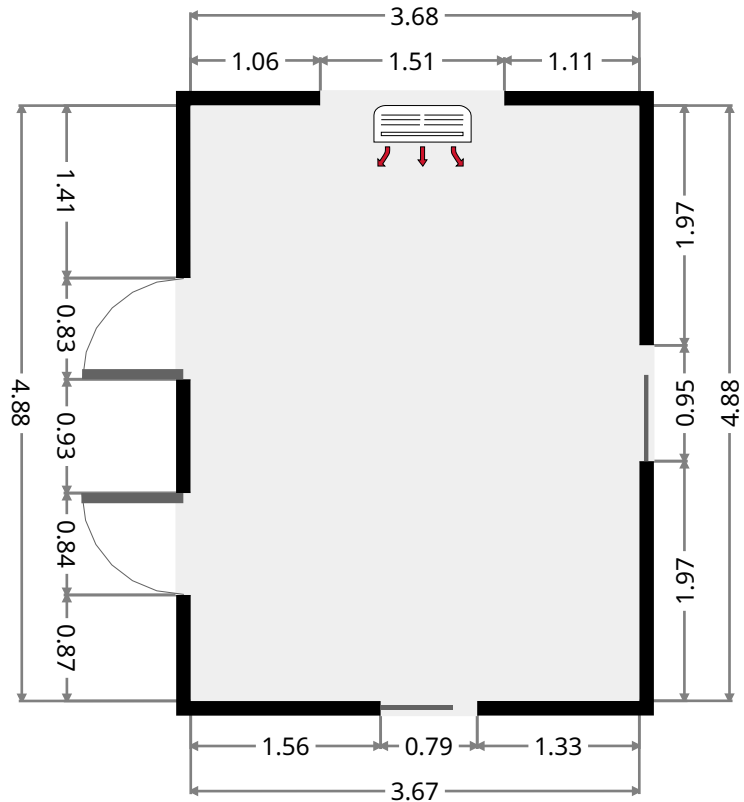
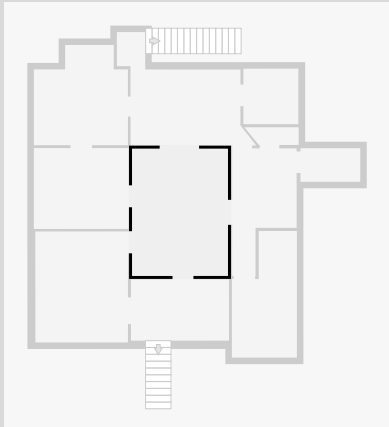
THIS FLOORPLAN IS PROVIDED WITHOUT WARRANTY OF ANY KIND. SENSOPIA DISCLAIMS ANY WARRANTY INCLUDING, WITHOUT LIMITATION, SATISFACTORY QUALITY OR ACCURACY OF DIMENSIONS.



288 Berserker Street

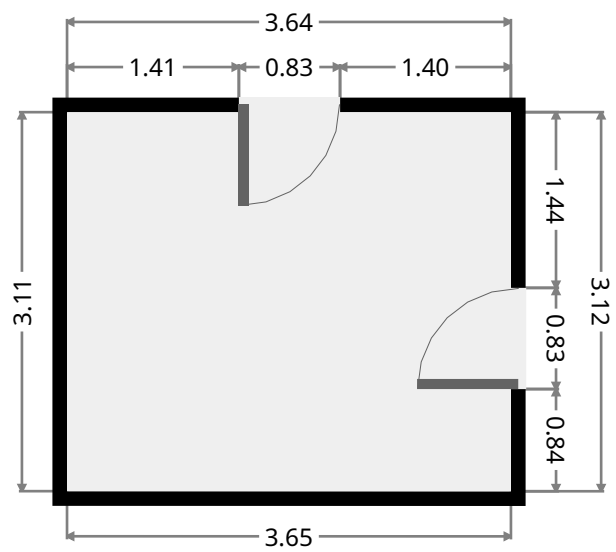
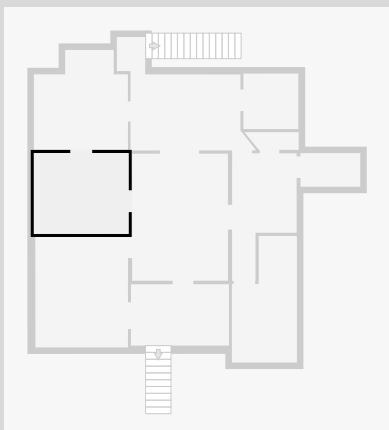
Living Room

Width: 3.68 m
 Length: 4.88 m
 Area: 17.98 m²
 Perimeter: 17.13 m



Bedroom

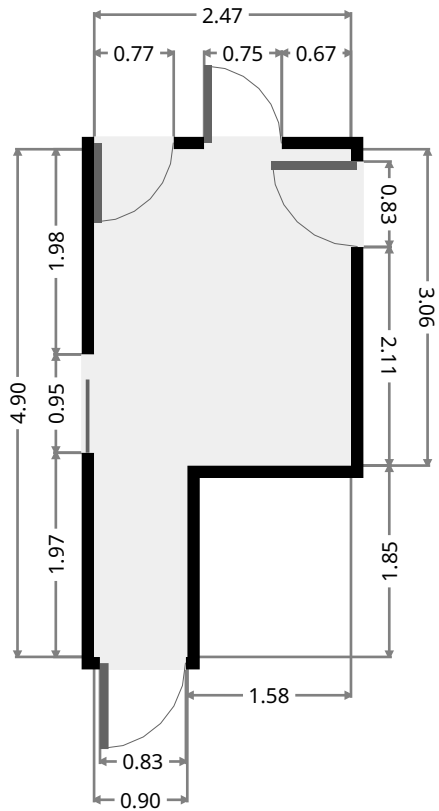
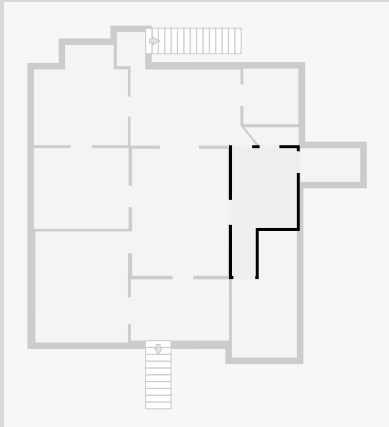
Width: 3.12 m
 Length: 3.64 m
 Area: 11.32 m²
 Perimeter: 13.50 m



288 Berserker Street

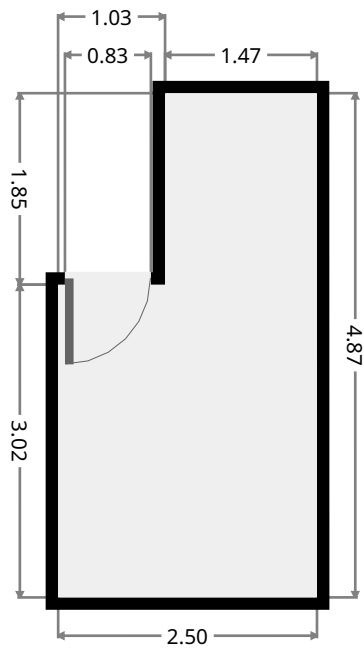
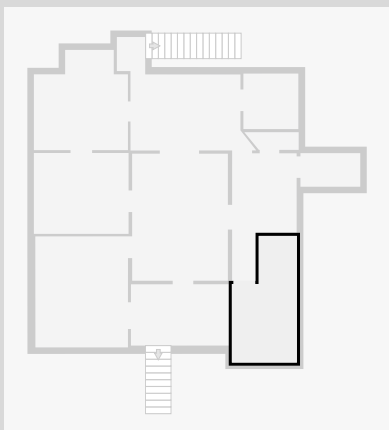
Other

Width: 2.47 m
 Length: 4.90 m
 Area: 9.24 m²
 Perimeter: 14.77 m

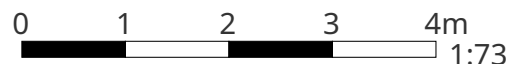


Bedroom

Width: 2.50 m
 Length: 4.87 m
 Area: 10.27 m²
 Perimeter: 14.74 m



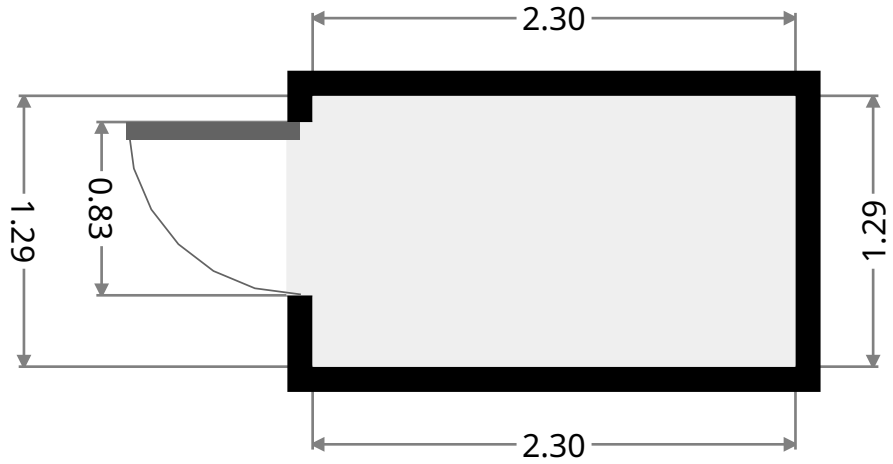
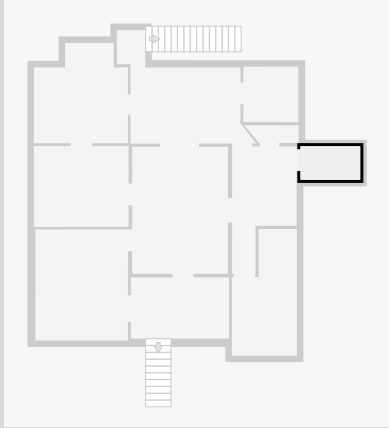
THIS FLOORPLAN IS PROVIDED WITHOUT WARRANTY OF ANY KIND. SENSOPIA DISCLAIMS ANY WARRANTY INCLUDING, WITHOUT LIMITATION, SATISFACTORY QUALITY OR ACCURACY OF DIMENSIONS.



288 Berserker Street

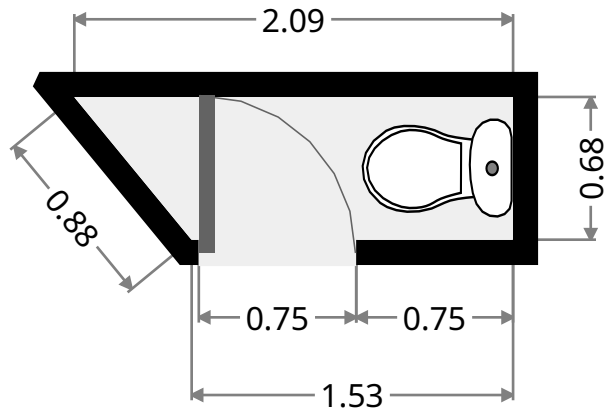
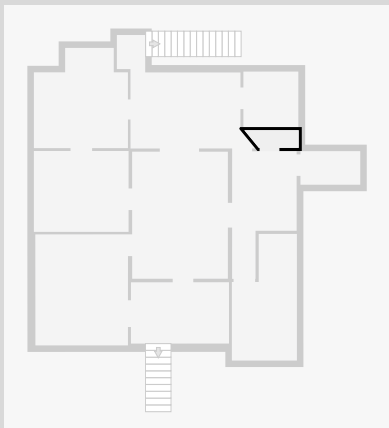
Wheelchair Lift

Width: 1.29 m
Length: 2.30 m
Area: 2.97 m²
Perimeter: 7.18 m



Toilet

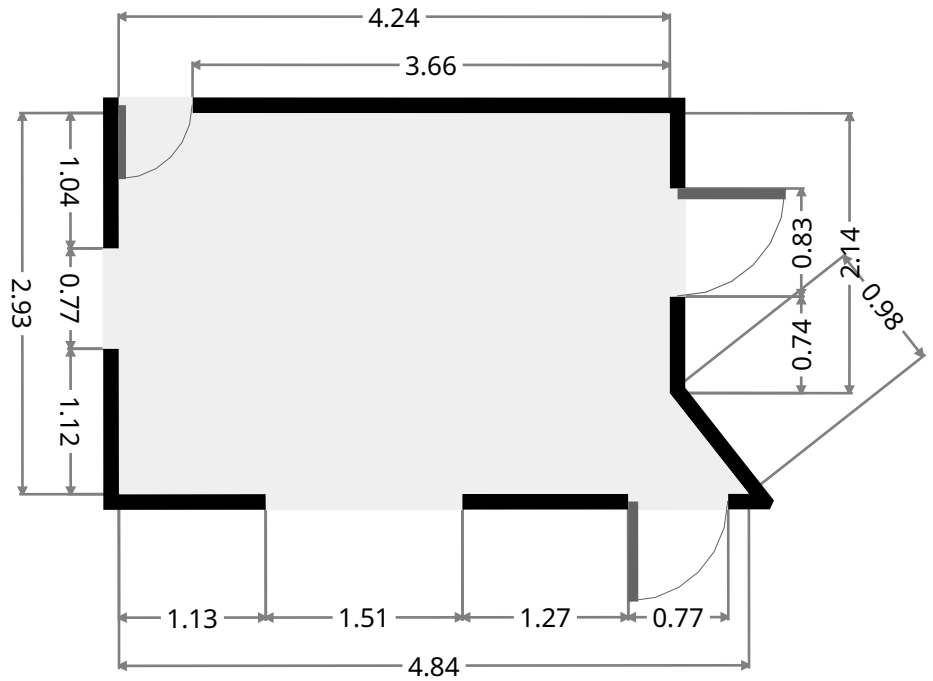
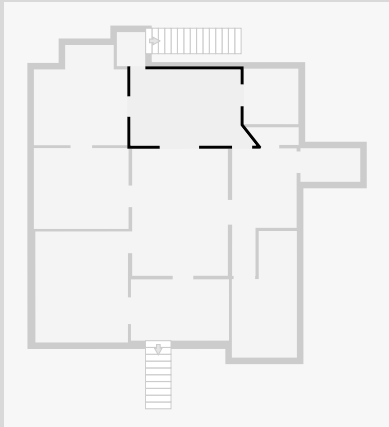
Width: 0.88 m
Length: 2.09 m
Area: 1.23 m²
Perimeter: 5.18 m



288 Berserker Street

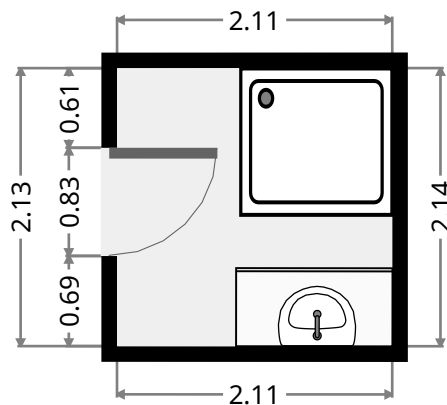
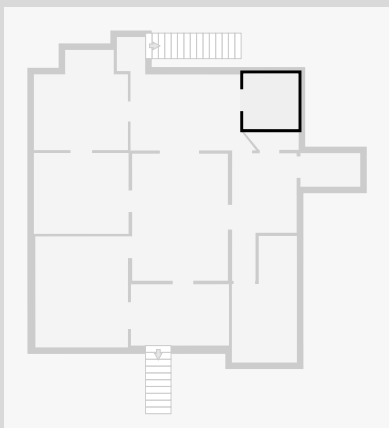
Dining Room

Width: 2.93 m
 Length: 4.84 m
 Area: 12.59 m²
 Perimeter: 15.12 m



Bathroom

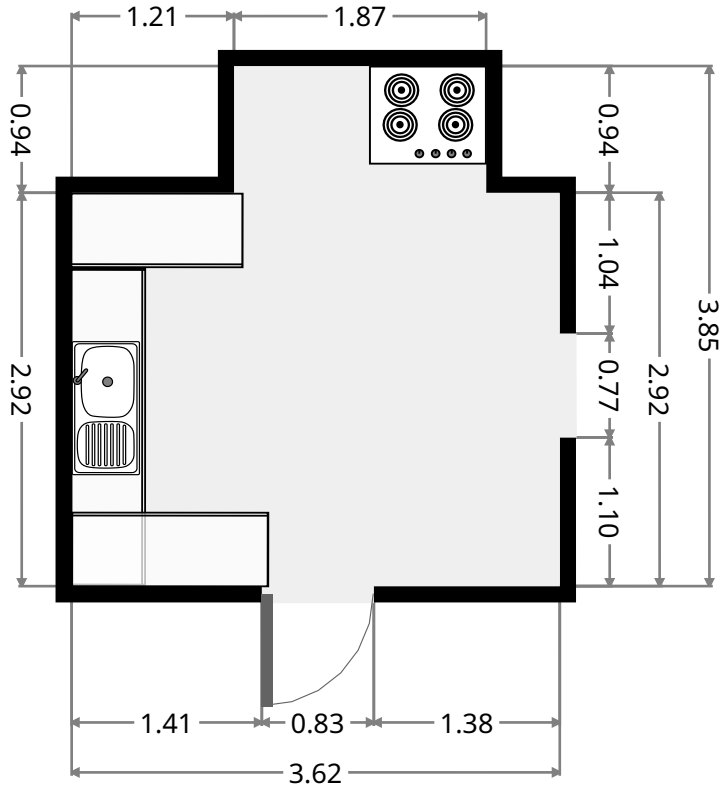
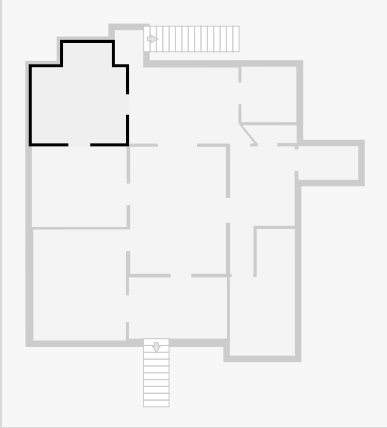
Width: 2.11 m
 Length: 2.14 m
 Area: 4.51 m²
 Perimeter: 8.49 m



288 Berserker Street

Kitchen

Width: 3.62 m
 Length: 3.85 m
 Area: 12.30 m²
 Perimeter: 14.94 m



Hall

Width: 1.09 m
 Length: 1.31 m
 Area: 1.43 m²
 Perimeter: 4.80 m

