

287A Frenchville Road

SUBMITTED BY

Ray White Rockhampton Casey
stockers@cqoz.com

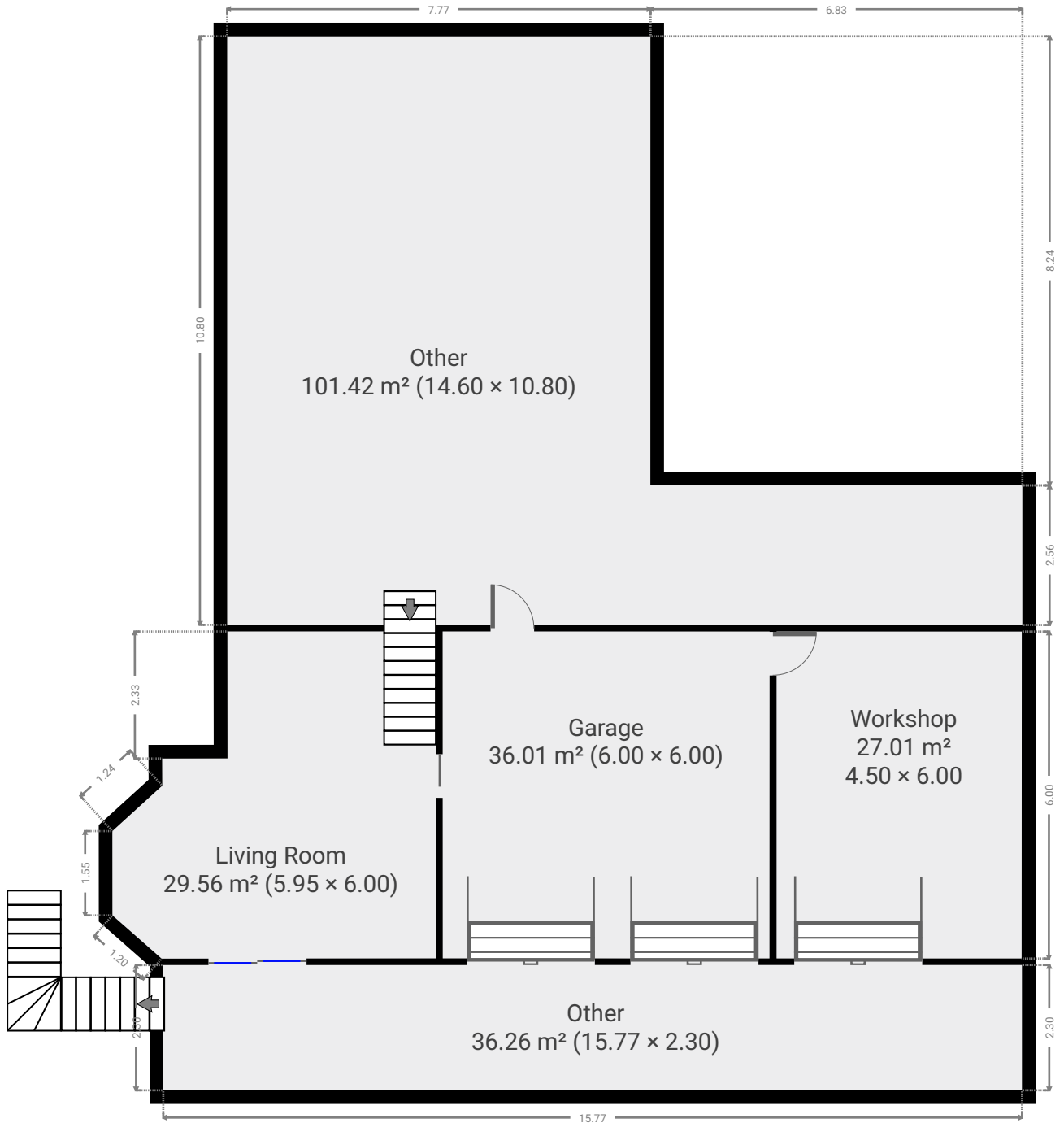
CREATED ON

2021-12-02

Floors

2

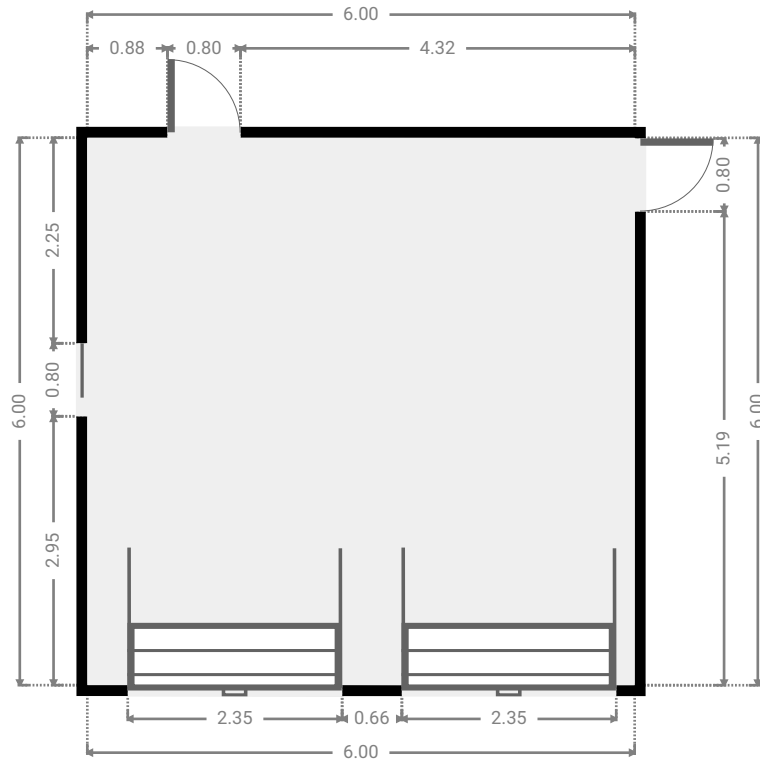
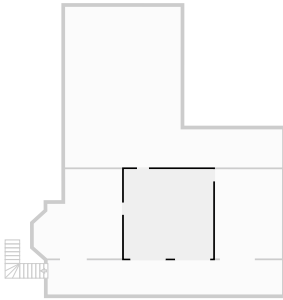
▼ Ground Floor



FLOORS: 2

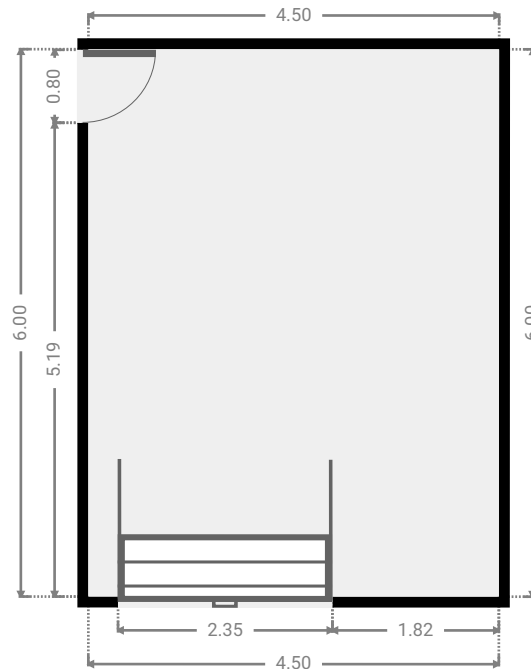
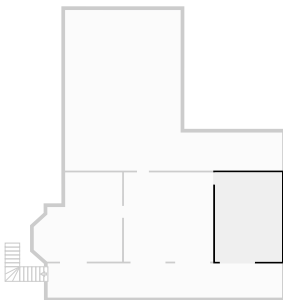
▼ Garage
Ground Floor

WIDTH: 6.00 m • LENGTH: 6.00 m
AREA: 36.01 m² • PERIMETER: 24.00 m



▼ Workshop
Ground Floor

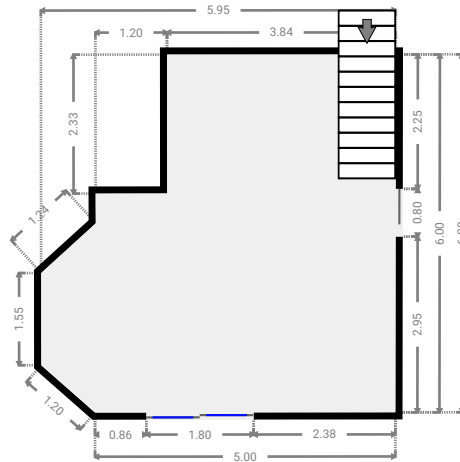
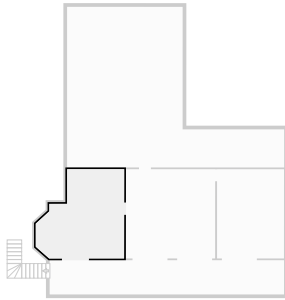
WIDTH: 4.50 m • LENGTH: 6.00 m
AREA: 27.01 m² • PERIMETER: 21.00 m



FLOORS: 2

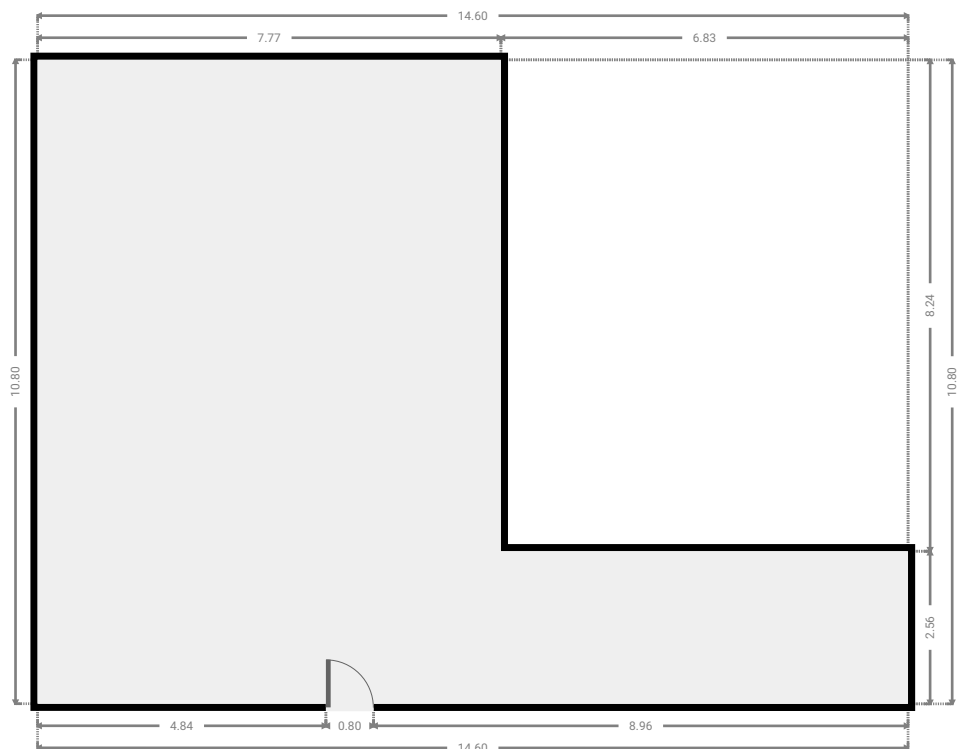
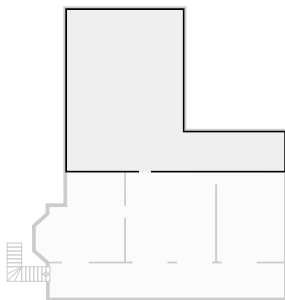
▼ **Living Room**
Ground Floor

WIDTH: 5.95 m • LENGTH: 6.00 m
AREA: 29.56 m² • PERIMETER: 22.89 m



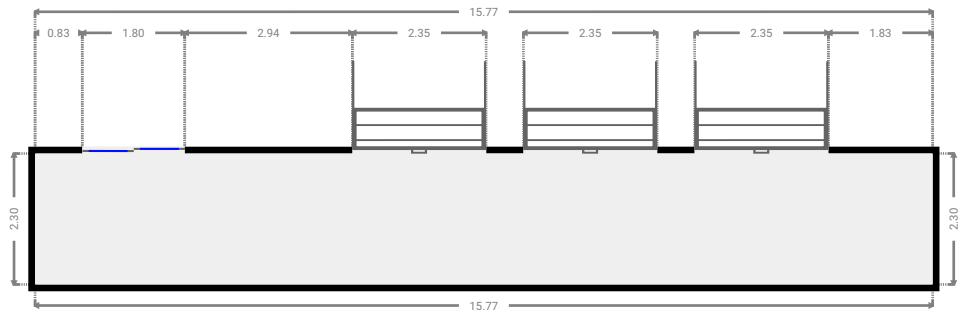
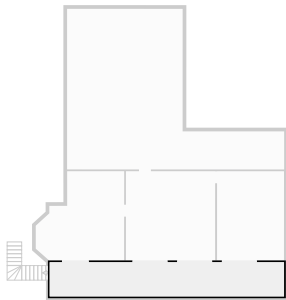
▼ **Other**
Ground Floor

WIDTH: 14.60 m • LENGTH: 10.80 m
AREA: 101.42 m² • PERIMETER: 50.80 m

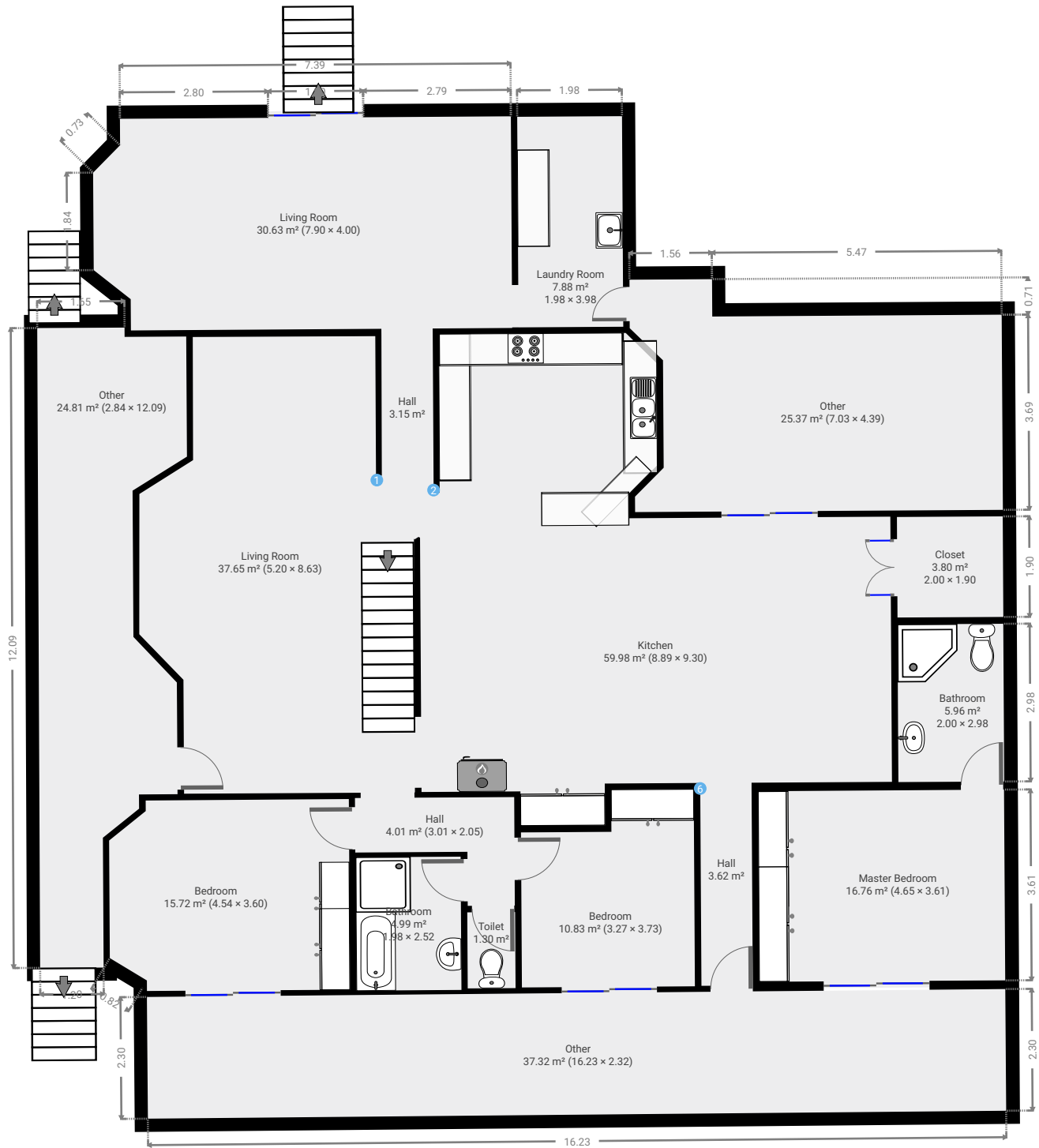


▼ Other
Ground Floor

WIDTH: 15.77 m • LENGTH: 2.30 m
AREA: 36.26 m² • PERIMETER: 36.13 m

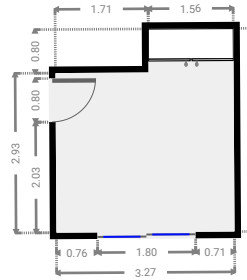
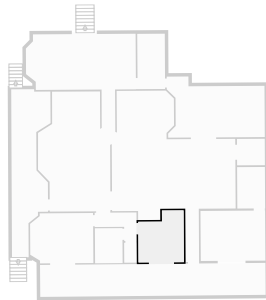


▼ 1st Floor



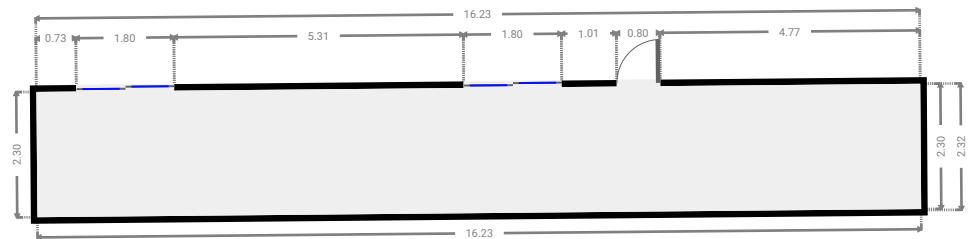
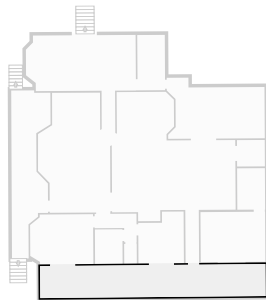
▼ **Bedroom**
1st Floor

WIDTH: 3.27 m • LENGTH: 3.73 m
AREA: 10.83 m² • PERIMETER: 14.00 m



▼ **Other**
1st Floor

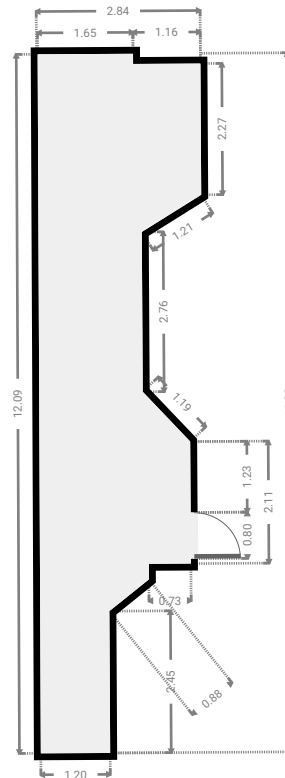
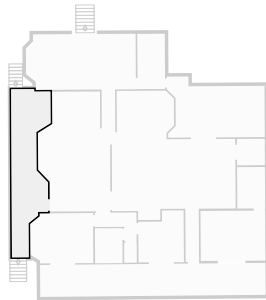
WIDTH: 16.23 m • LENGTH: 2.32 m
AREA: 37.32 m² • PERIMETER: 37.05 m



FLOORS: 2

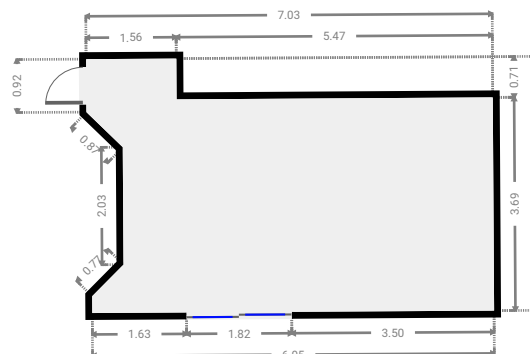
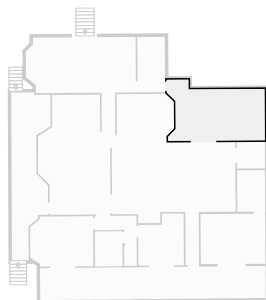
▼ Other
1st Floor

WIDTH: 2.84 m • LENGTH: 12.09 m
AREA: 24.81 m² • PERIMETER: 30.16 m



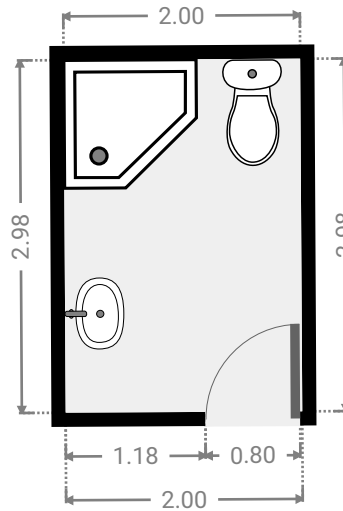
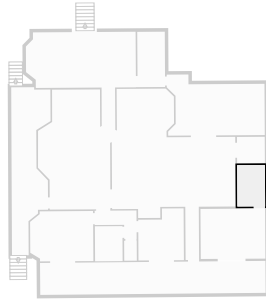
▼ Other
1st Floor

WIDTH: 7.03 m • LENGTH: 4.39 m
AREA: 25.37 m² • PERIMETER: 23.26 m



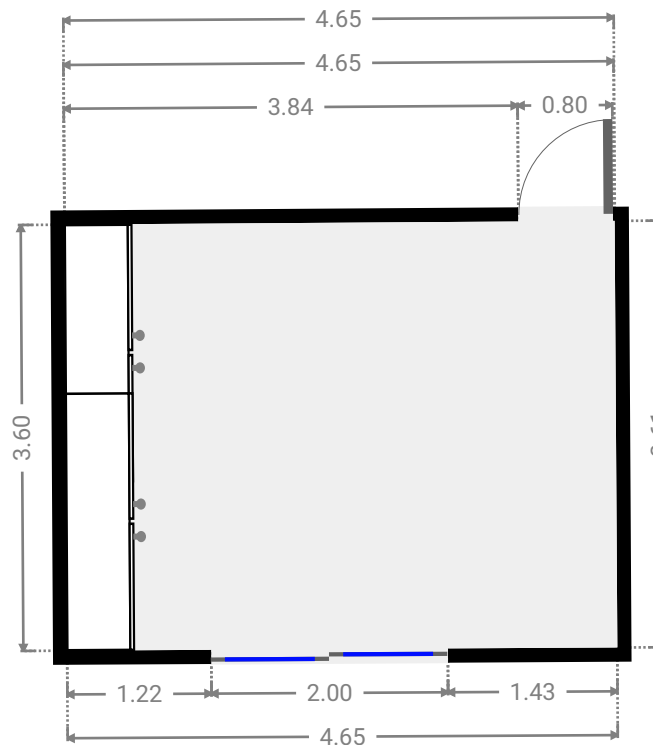
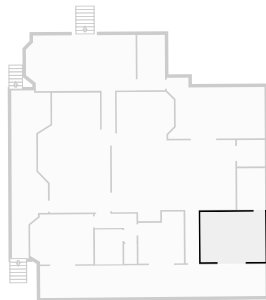
▼ **Bathroom**
1st Floor

WIDTH: 2.00 m • LENGTH: 2.98 m
AREA: 5.96 m² • PERIMETER: 9.96 m



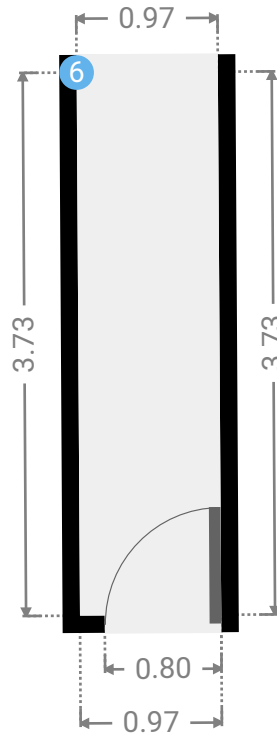
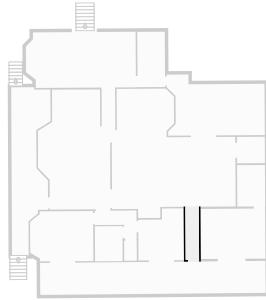
▼ **Master Bedroom**
1st Floor

WIDTH: 4.65 m • LENGTH: 3.61 m
AREA: 16.76 m² • PERIMETER: 16.51 m



▼ **Hall**
1st Floor

WIDTH: 0.97 m • LENGTH: 3.73 m
AREA: 3.62 m² • PERIMETER: 9.40 m



▼ **Hall/1st Floor**

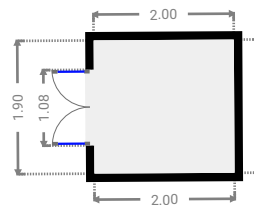
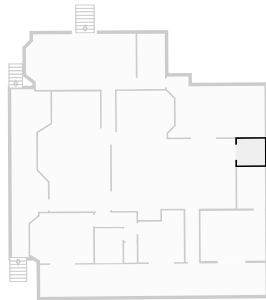
6 OPENING

Height
0.00 m



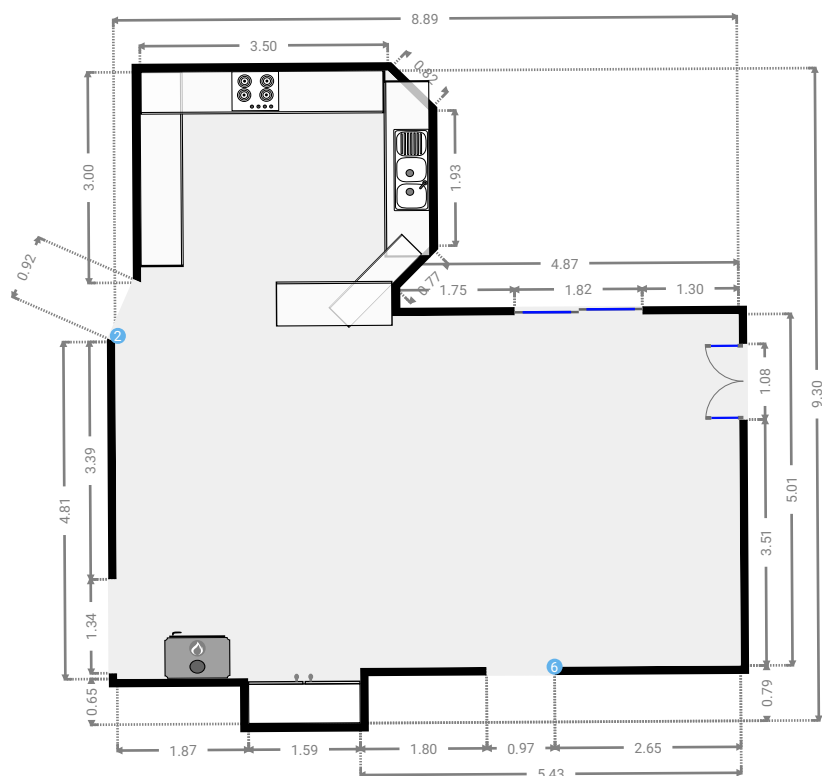
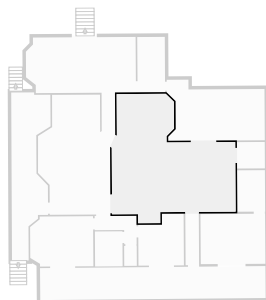
▼ **Closet**
1st Floor

WIDTH: 2.00 m • LENGTH: 1.90 m
AREA: 3.80 m² • PERIMETER: 7.80 m



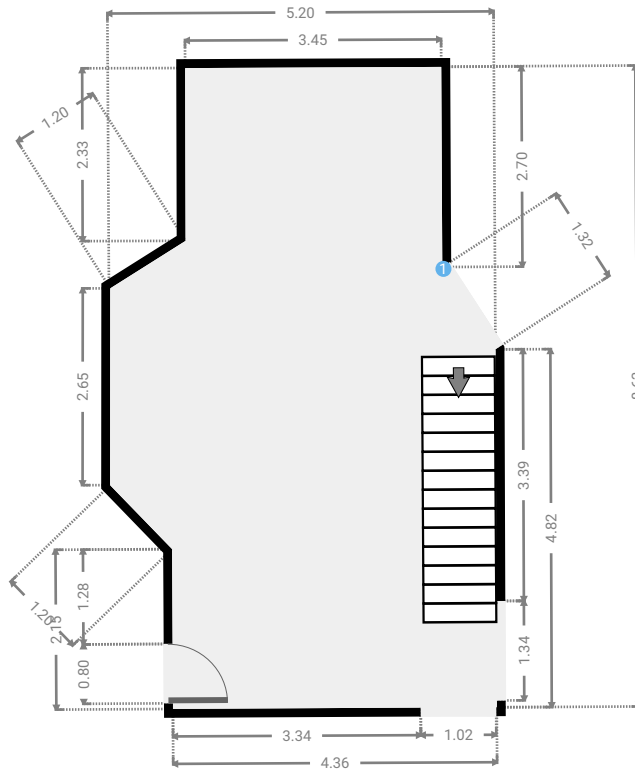
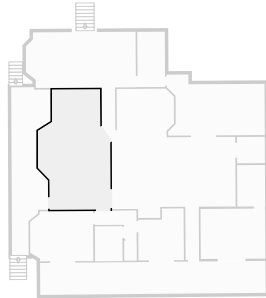
▼ **Kitchen**
1st Floor

WIDTH: 8.89 m • LENGTH: 9.30 m
AREA: 59.98 m² • PERIMETER: 36.53 m



▼ Living Room
1st Floor

WIDTH: 5.20 m • LENGTH: 8.63 m
AREA: 37.65 m² • PERIMETER: 26.18 m



▼ Living Room/1st Floor

1 OPENING

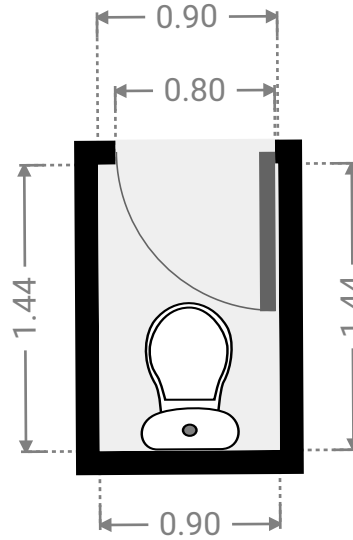
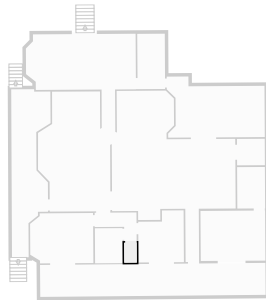
Height
0.00 m



FLOORS: 2

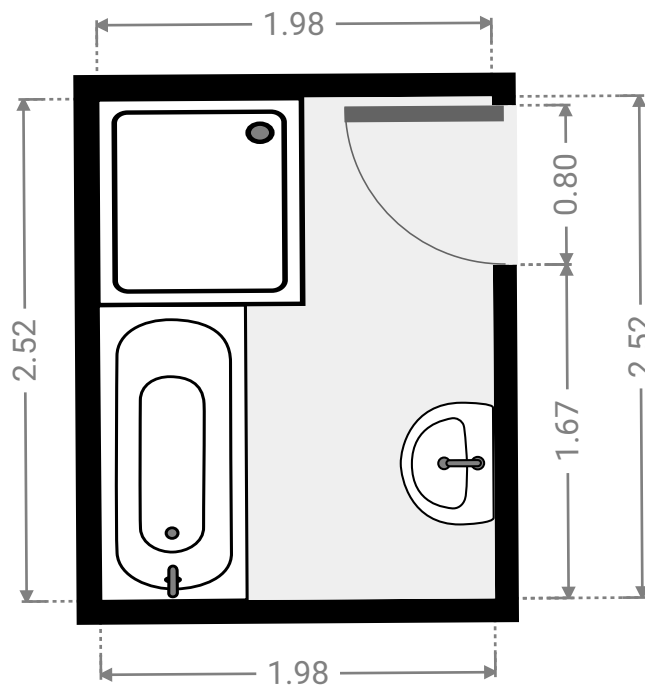
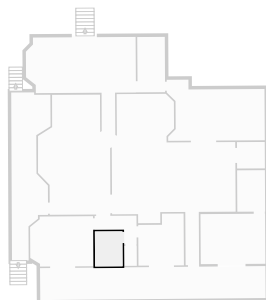
▼ **Toilet**
1st Floor

WIDTH: 0.90 m • LENGTH: 1.44 m
AREA: 1.30 m² • PERIMETER: 4.68 m



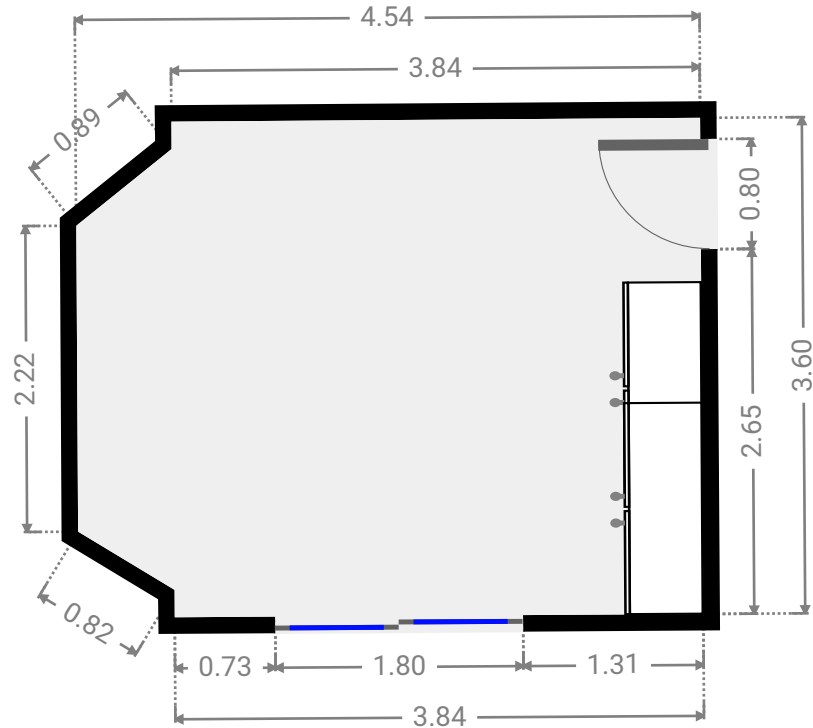
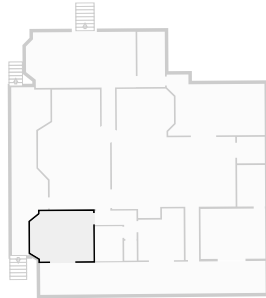
▼ **Bathroom**
1st Floor

WIDTH: 1.98 m • LENGTH: 2.52 m
AREA: 4.99 m² • PERIMETER: 9.00 m



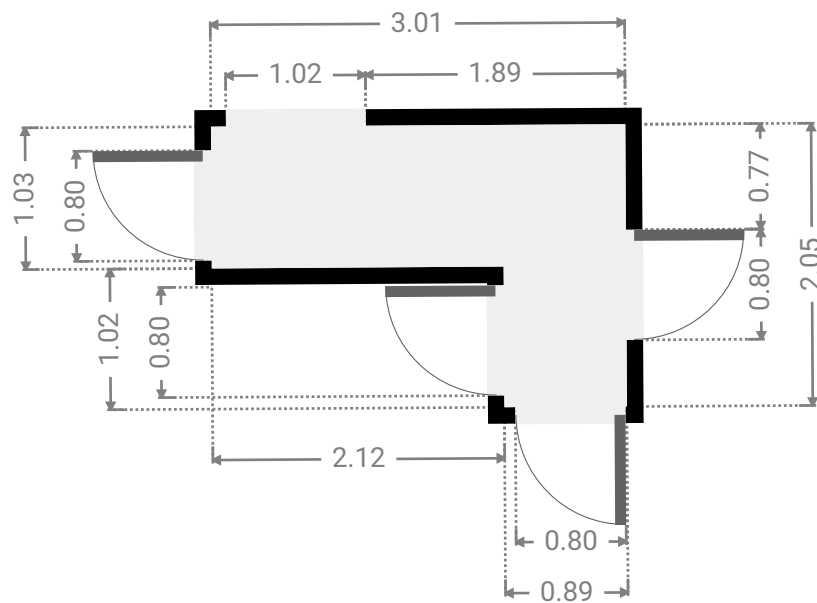
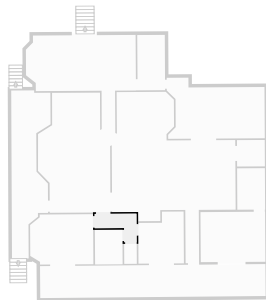
▼ **Bedroom**
1st Floor

WIDTH: 4.54 m • LENGTH: 3.60 m
AREA: 15.72 m² • PERIMETER: 15.61 m



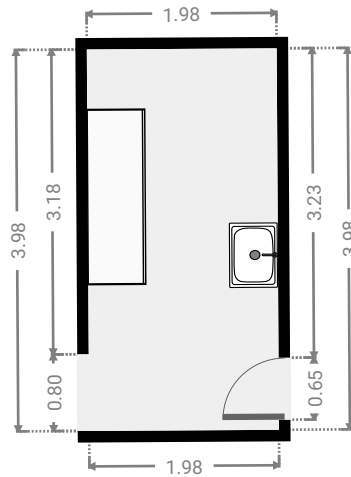
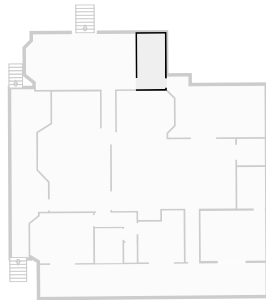
▼ **Hall**
1st Floor

WIDTH: 3.01 m • LENGTH: 2.05 m
AREA: 4.01 m² • PERIMETER: 10.12 m



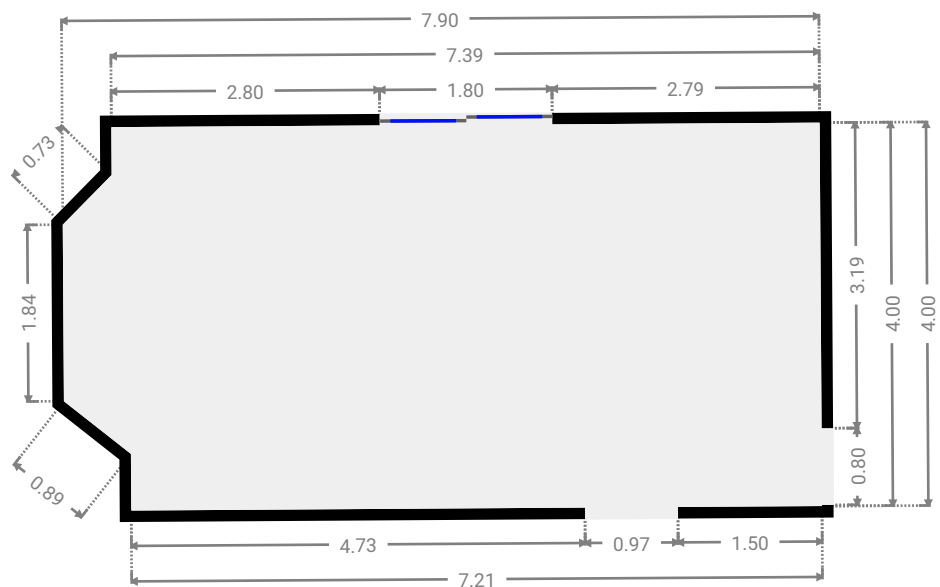
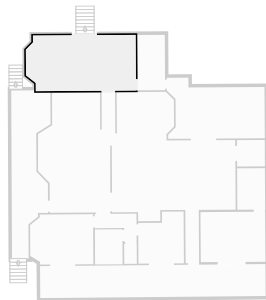
▼ **Laundry Room**
1st Floor

WIDTH: 1.98 m • LENGTH: 3.98 m
AREA: 7.88 m² • PERIMETER: 11.92 m



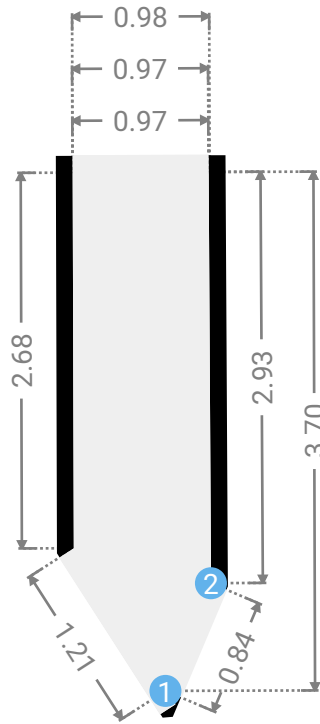
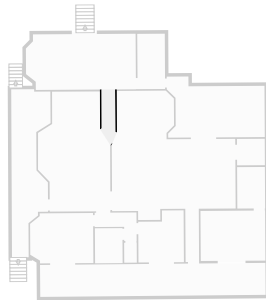
▼ **Living Room**
1st Floor

WIDTH: 7.90 m • LENGTH: 4.00 m
AREA: 30.63 m² • PERIMETER: 23.15 m



▼ **Hall**
1st Floor

WIDTH: 0.98 m • LENGTH: 3.70 m
AREA: 3.15 m² • PERIMETER: 8.62 m



▼ **Hall/1st Floor**

2 OPENING

Height
0.00 m

