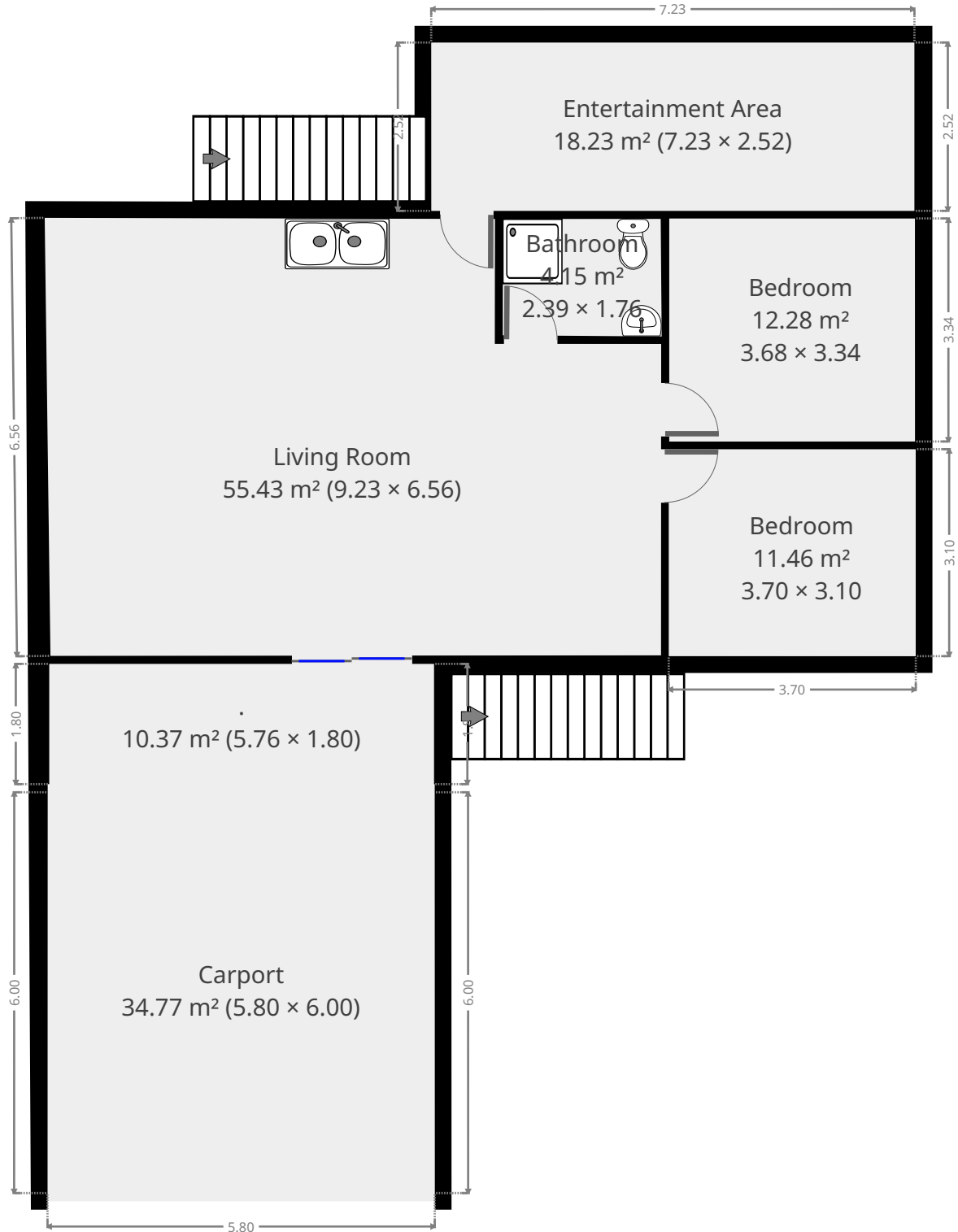


# 285 Duthie Avenue

## Ground Floor



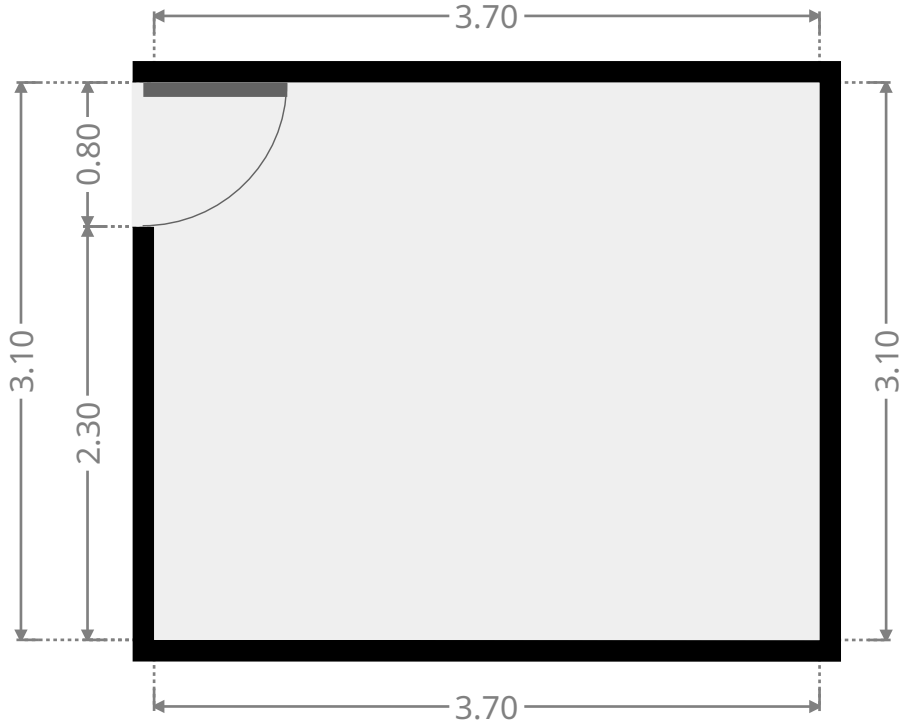
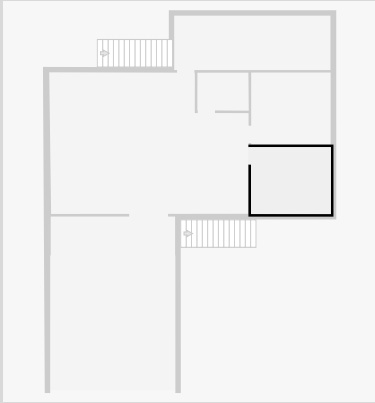
THIS FLOORPLAN IS PROVIDED WITHOUT WARRANTY OF ANY KIND. SENSOPIA DISCLAIMS ANY WARRANTY INCLUDING, WITHOUT LIMITATION, SATISFACTORY QUALITY OR ACCURACY OF DIMENSIONS.



# 285 Duthie Avenue

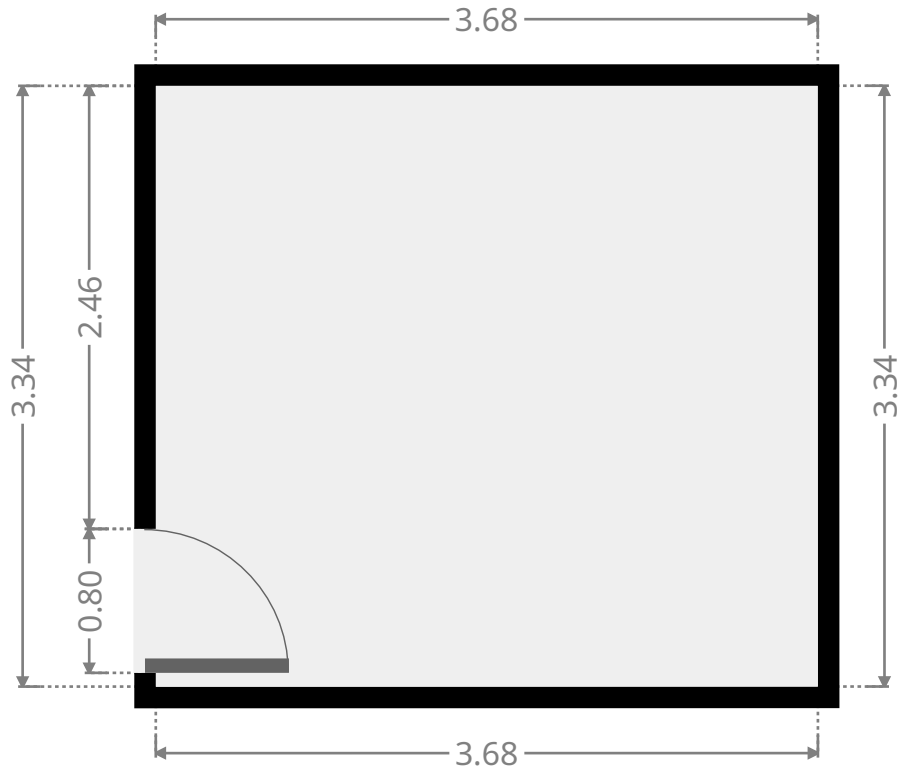
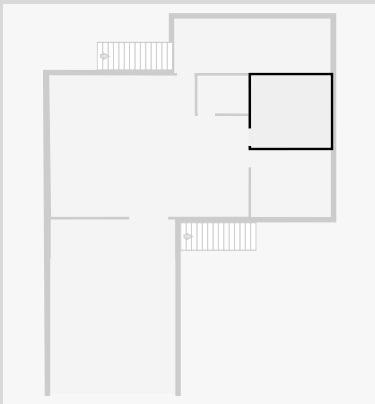
## Bedroom

Width: 3.10 m  
Length: 3.70 m  
Area: 11.46 m<sup>2</sup>  
Perimeter: 13.59 m



## Bedroom

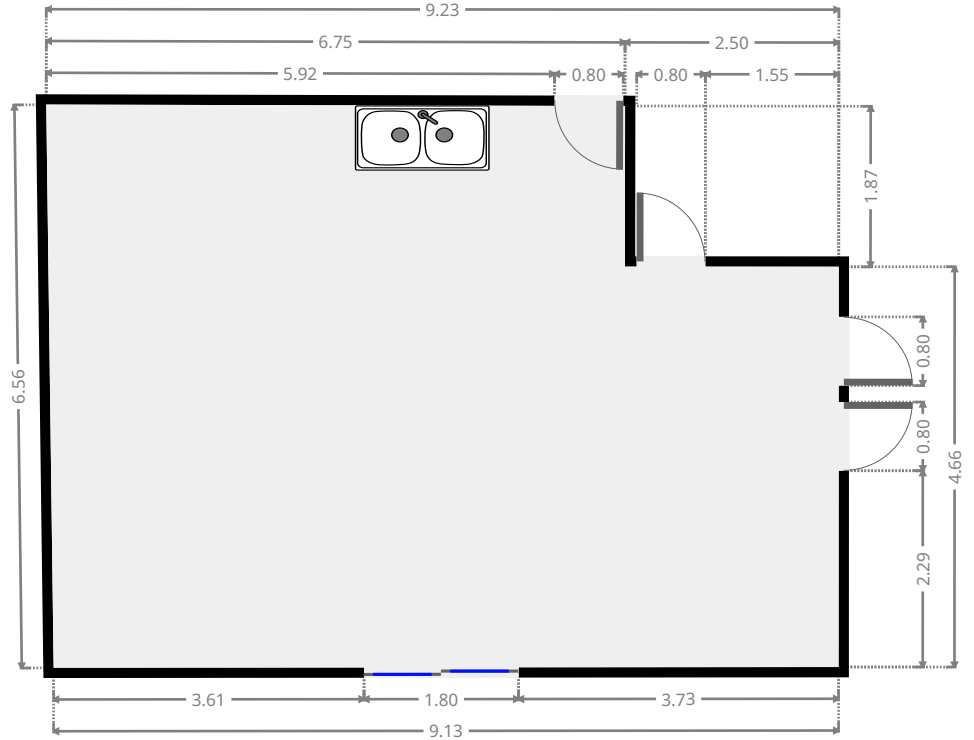
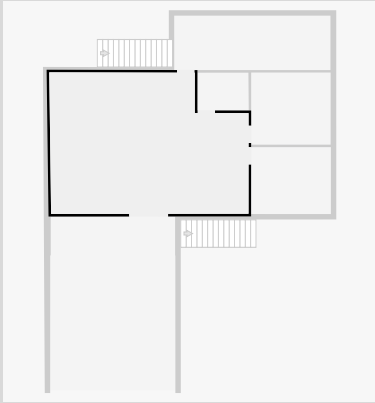
Width: 3.34 m  
Length: 3.68 m  
Area: 12.28 m<sup>2</sup>  
Perimeter: 14.04 m



# 285 Duthie Avenue

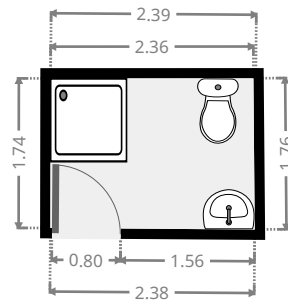
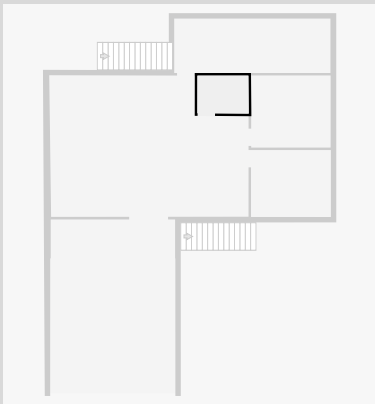
## Living Room

Width: 6.56 m  
 Length: 9.23 m  
 Area: 55.43 m<sup>2</sup>  
 Perimeter: 31.46 m



## Bathroom

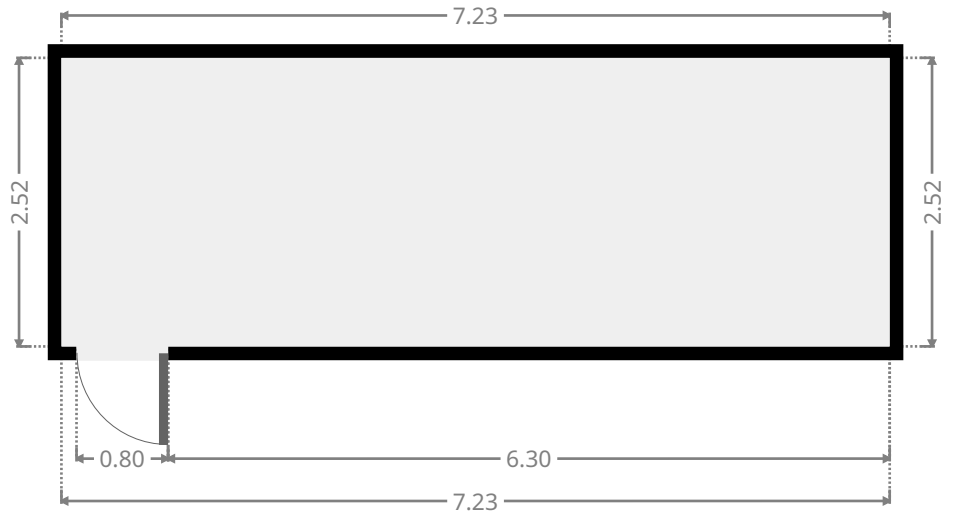
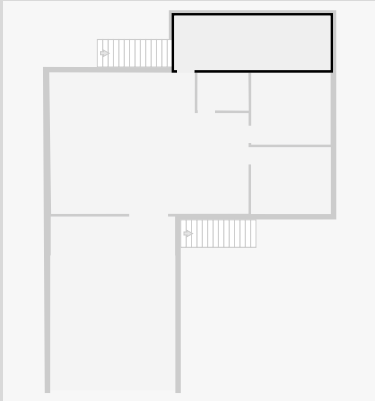
Width: 1.76 m  
 Length: 2.39 m  
 Area: 4.15 m<sup>2</sup>  
 Perimeter: 8.24 m



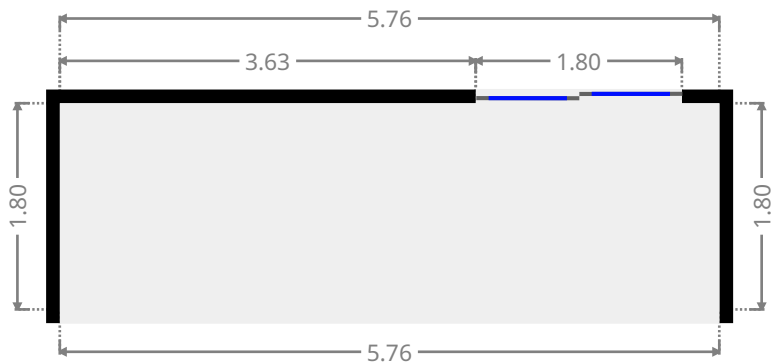
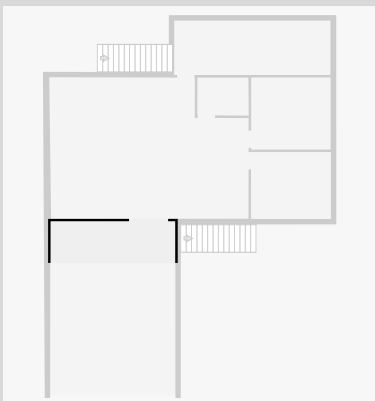
# 285 Duthie Avenue

## Entertainment Area

Width: 2.52 m  
Length: 7.23 m  
Area: 18.23 m<sup>2</sup>  
Perimeter: 19.51 m



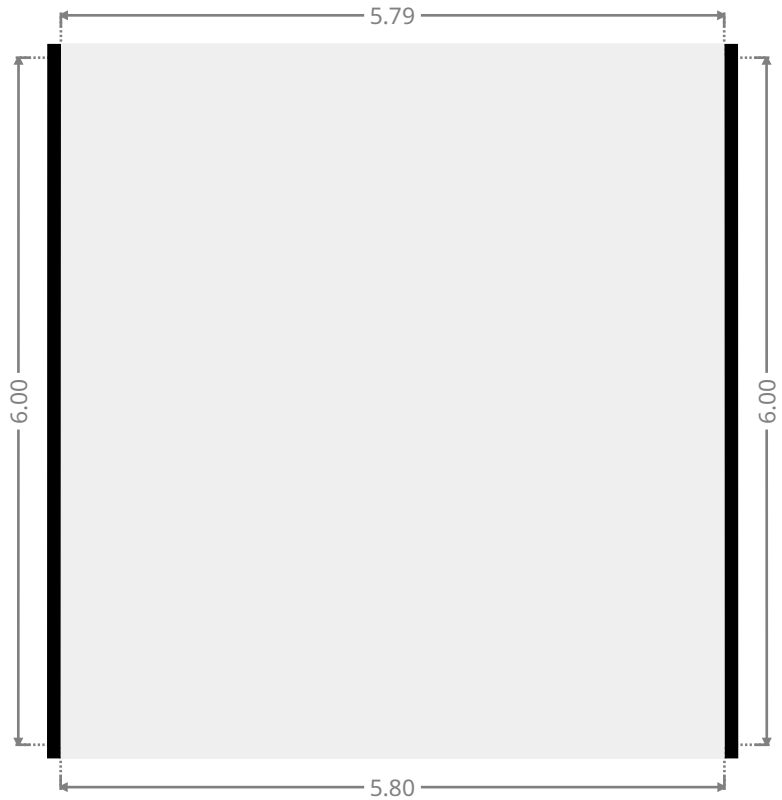
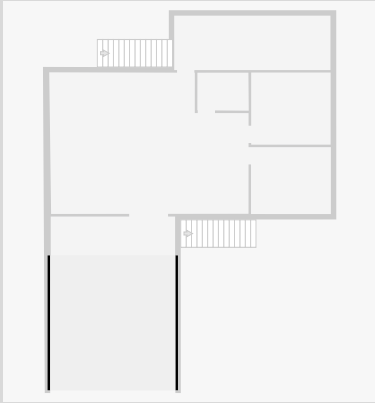
•  
Width: 1.80 m  
Length: 5.76 m  
Area: 10.37 m<sup>2</sup>  
Perimeter: 15.12 m



# 285 Duthie Avenue

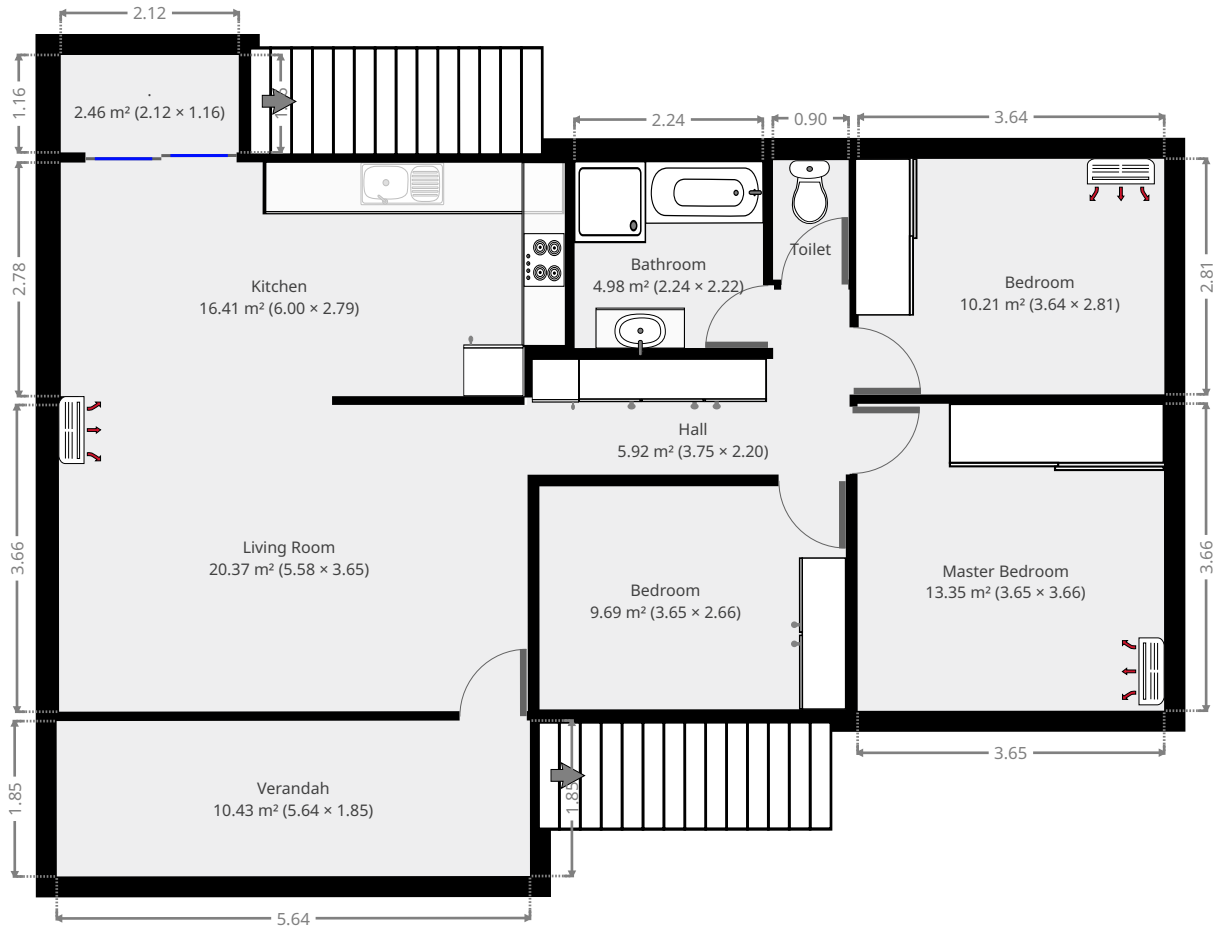
## Carport

Width: 5.80 m  
Length: 6.00 m  
Area: 34.77 m<sup>2</sup>  
Perimeter: 23.59 m



# 285 Duthie Avenue

## 1st Floor



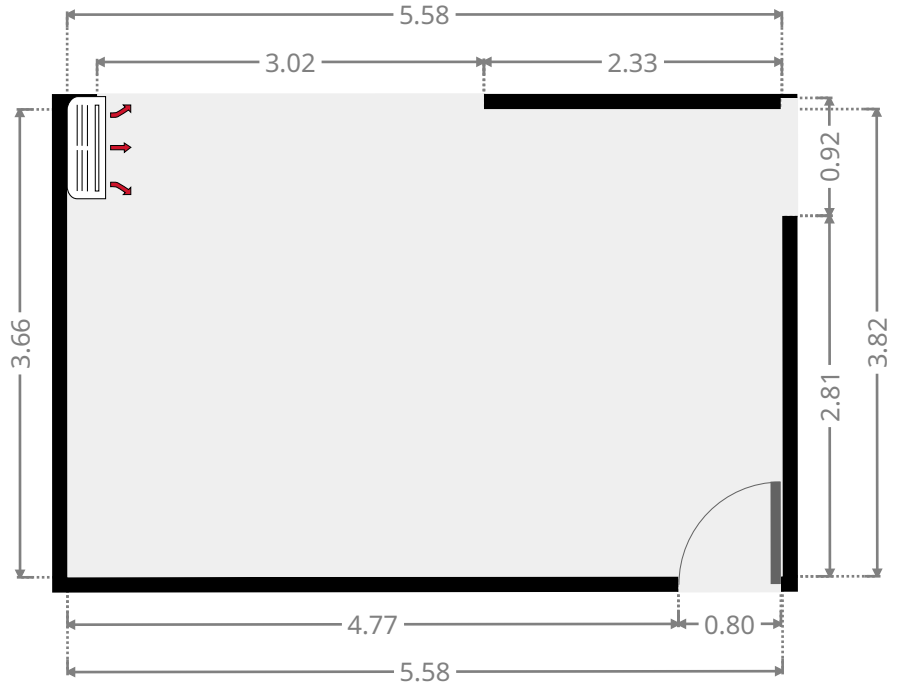
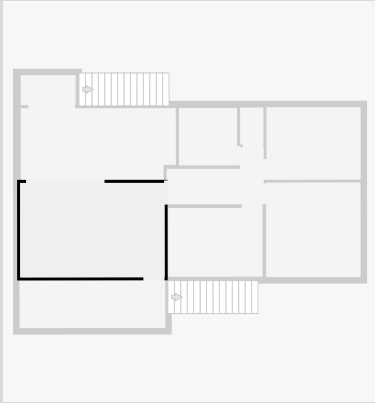
THIS FLOORPLAN IS PROVIDED WITHOUT WARRANTY OF ANY KIND. SENSOPIA DISCLAIMS ANY WARRANTY INCLUDING, WITHOUT LIMITATION, SATISFACTORY QUALITY OR ACCURACY OF DIMENSIONS.



# 285 Duthie Avenue

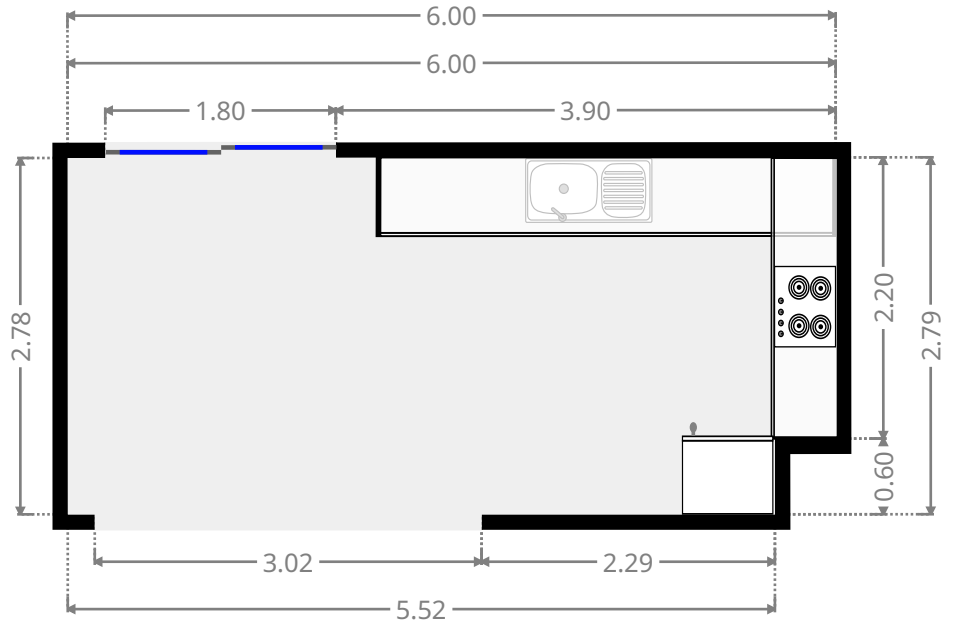
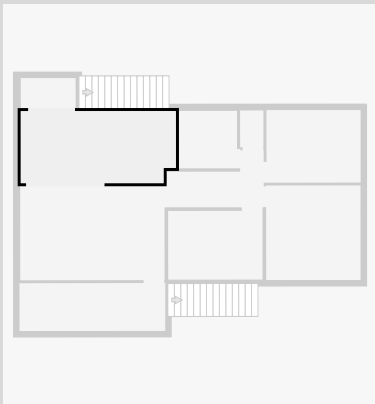
## Living Room

Width: 3.65 m  
 Length: 5.58 m  
 Area: 20.37 m<sup>2</sup>  
 Perimeter: 18.46 m

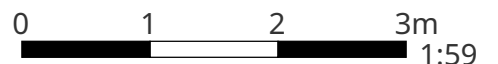


## Kitchen

Width: 2.79 m  
 Length: 6.00 m  
 Area: 16.41 m<sup>2</sup>  
 Perimeter: 17.56 m



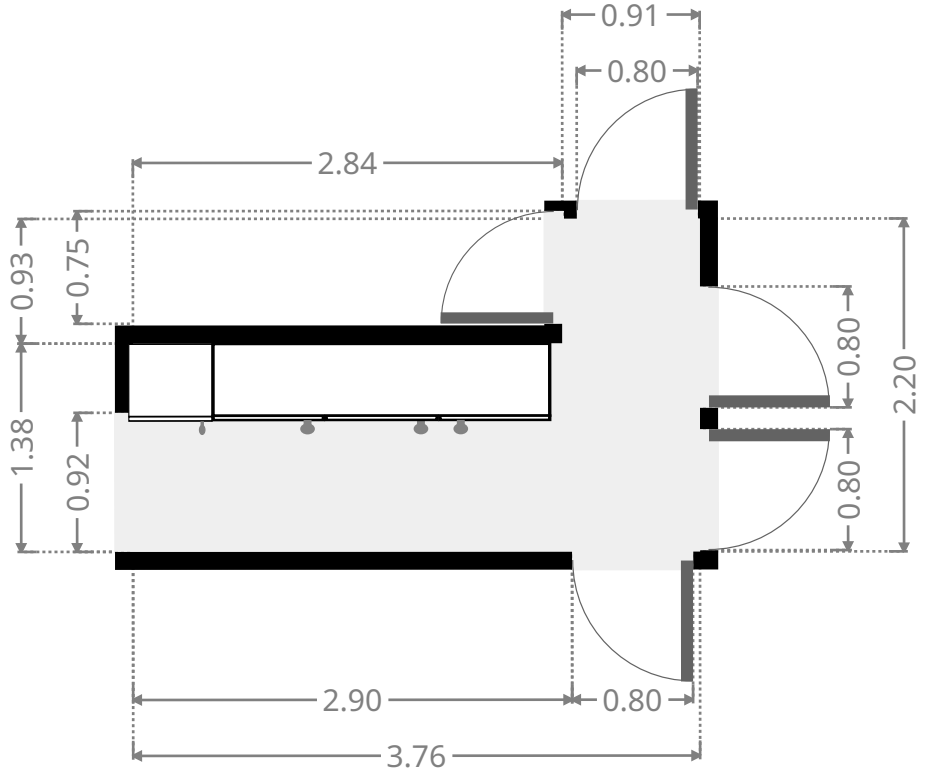
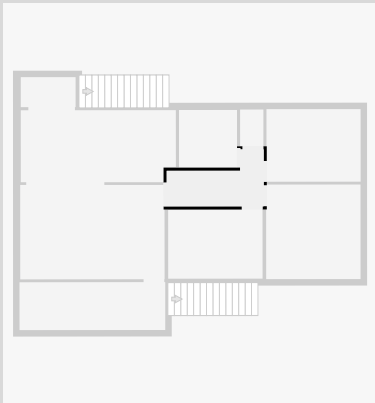
THIS FLOORPLAN IS PROVIDED WITHOUT WARRANTY OF ANY KIND. SENSOPIA DISCLAIMS ANY WARRANTY INCLUDING, WITHOUT LIMITATION, SATISFACTORY QUALITY OR ACCURACY OF DIMENSIONS.



# 285 Duthie Avenue

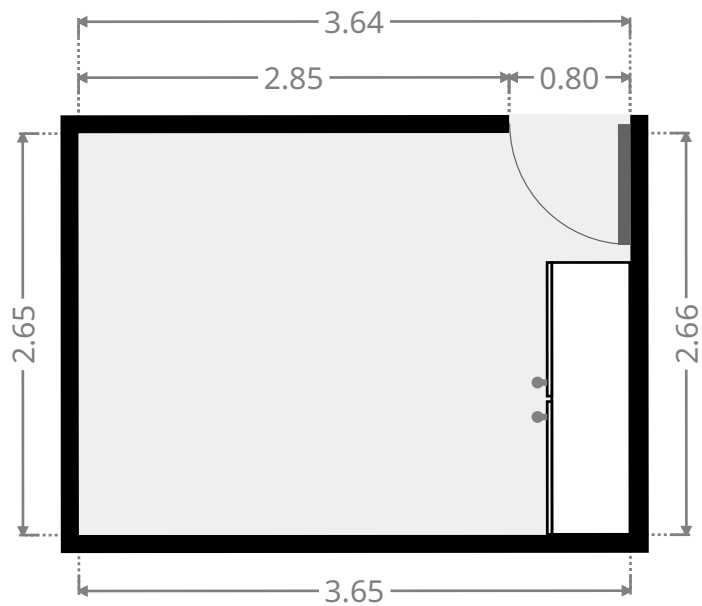
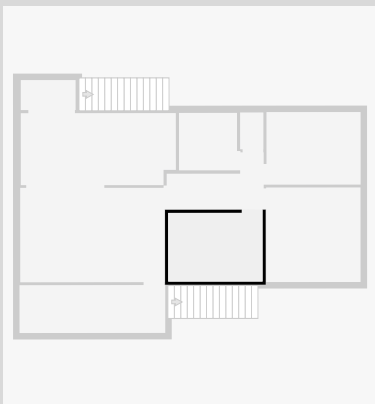
## Hall

Width: 2.20 m  
 Length: 3.75 m  
 Area: 5.92 m<sup>2</sup>  
 Perimeter: 11.91 m



## Bedroom

Width: 2.66 m  
 Length: 3.65 m  
 Area: 9.69 m<sup>2</sup>  
 Perimeter: 12.61 m

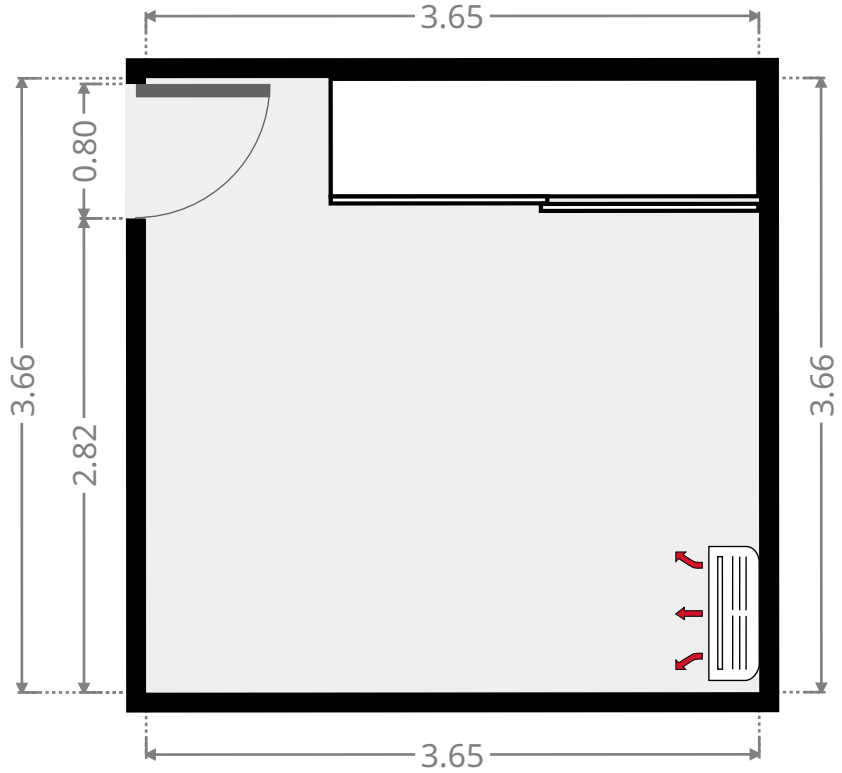
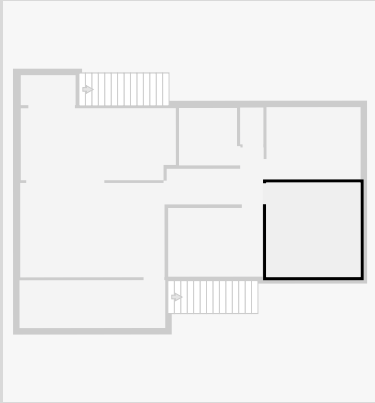




# 285 Duthie Avenue

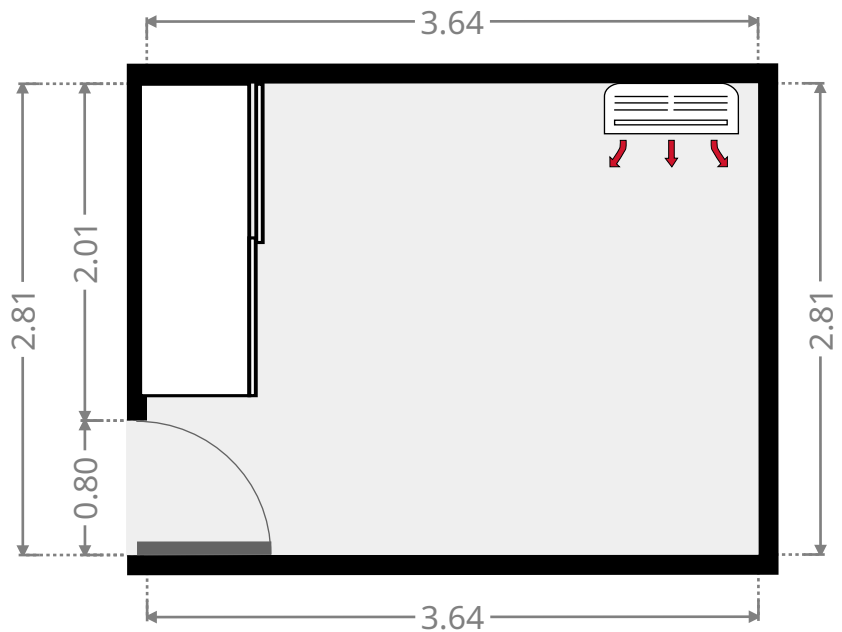
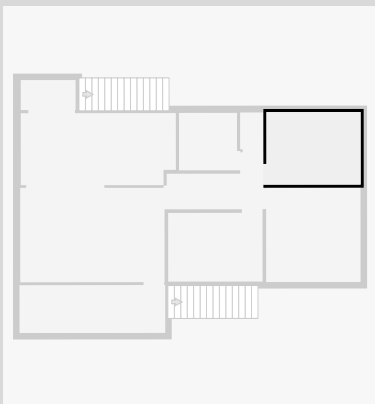
## Master Bedroom

Width: 3.65 m  
Length: 3.66 m  
Area: 13.35 m<sup>2</sup>  
Perimeter: 14.61 m



## Bedroom

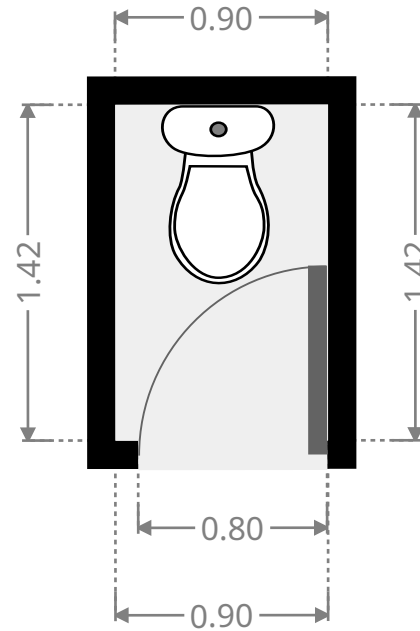
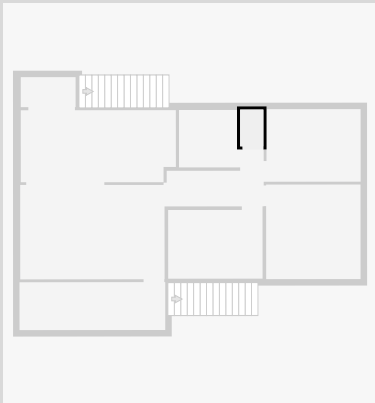
Width: 2.81 m  
Length: 3.64 m  
Area: 10.21 m<sup>2</sup>  
Perimeter: 12.89 m



# 285 Duthie Avenue

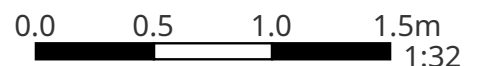
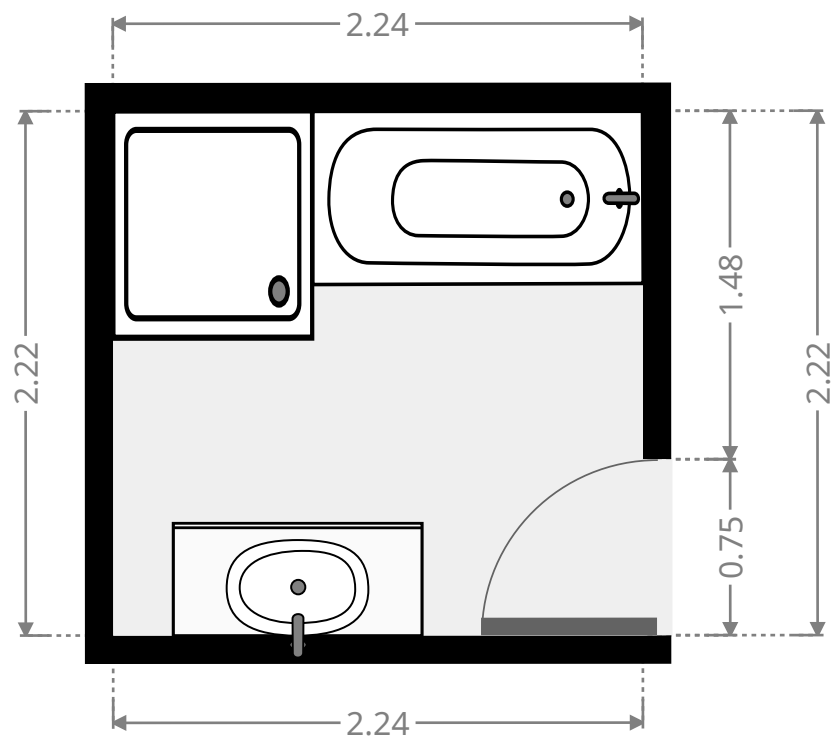
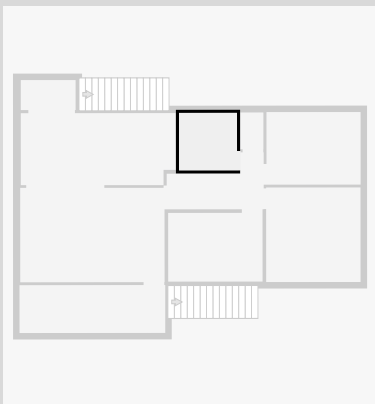
## Toilet / Half Bath

Width: 0.90 m  
Length: 1.42 m  
Area: 1.28 m<sup>2</sup>  
Perimeter: 4.64 m



## Bathroom

Width: 2.22 m  
Length: 2.24 m  
Area: 4.98 m<sup>2</sup>  
Perimeter: 8.93 m

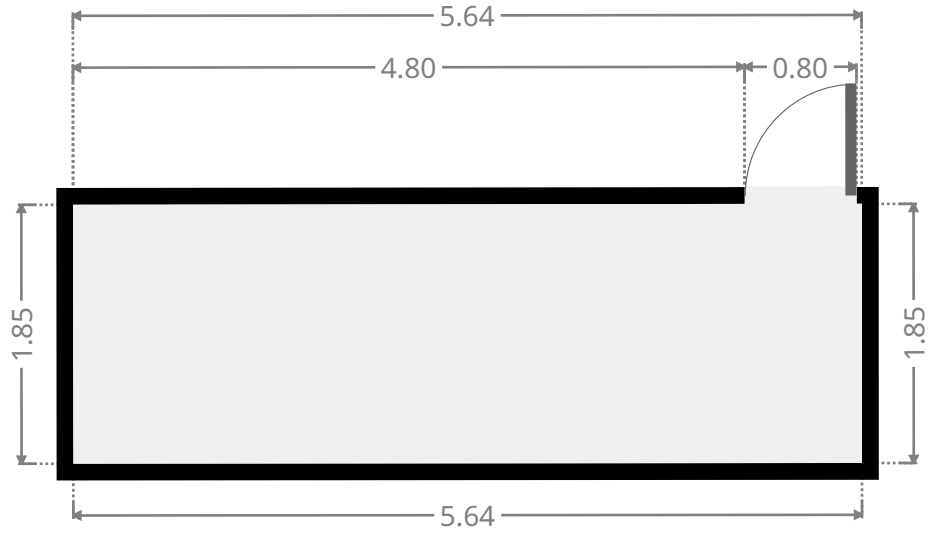
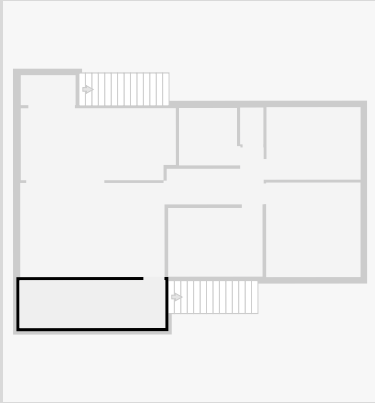


THIS FLOORPLAN IS PROVIDED WITHOUT WARRANTY OF ANY KIND. SENSOPIA DISCLAIMS ANY WARRANTY INCLUDING, WITHOUT LIMITATION, SATISFACTORY QUALITY OR ACCURACY OF DIMENSIONS.

# 285 Duthie Avenue

## Verandah

Width: 1.85 m  
Length: 5.64 m  
Area: 10.43 m<sup>2</sup>  
Perimeter: 14.97 m



•  
Width: 1.16 m  
Length: 2.12 m  
Area: 2.46 m<sup>2</sup>  
Perimeter: 6.56 m

