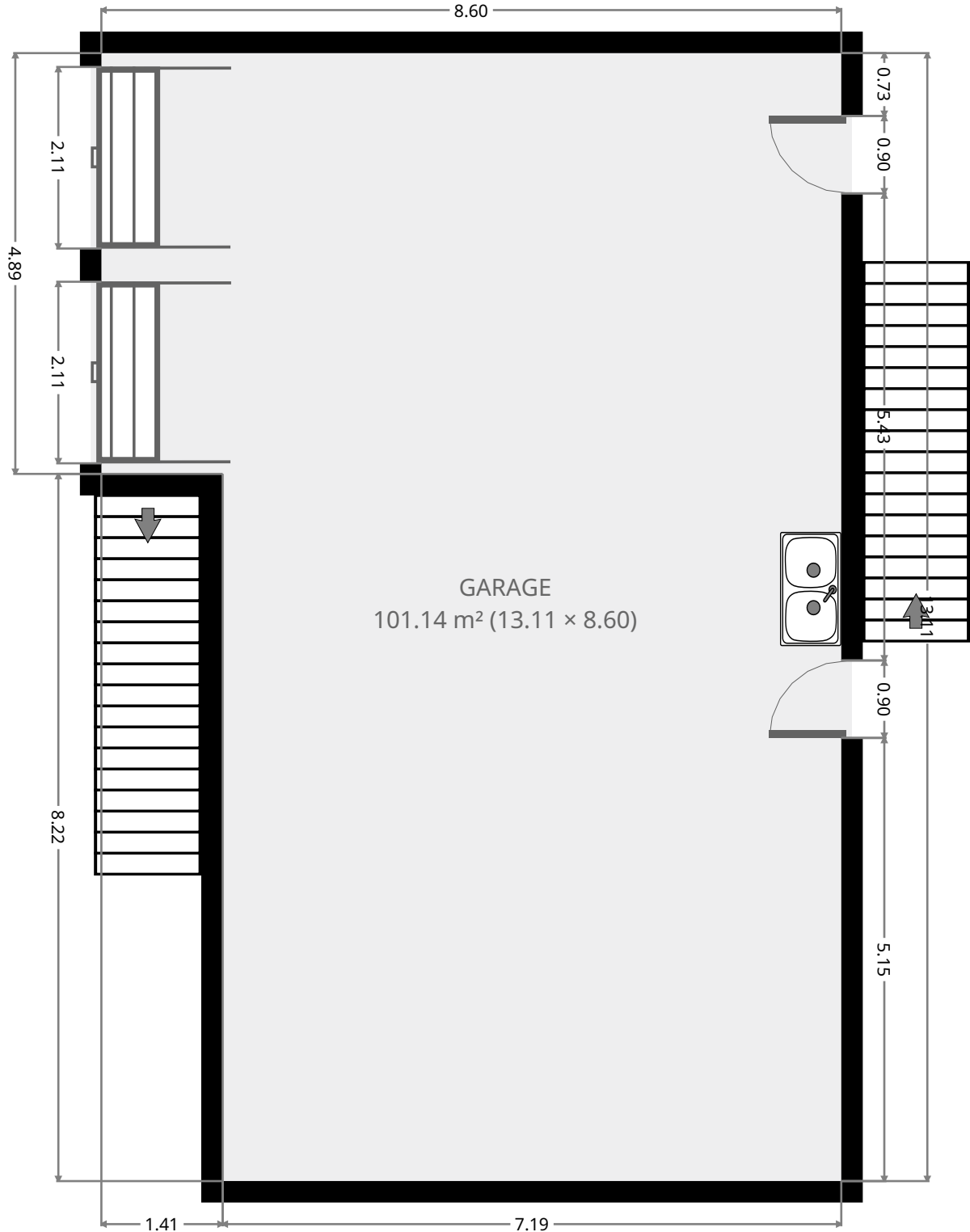


# 276 Elphinstone Street

## Ground Floor



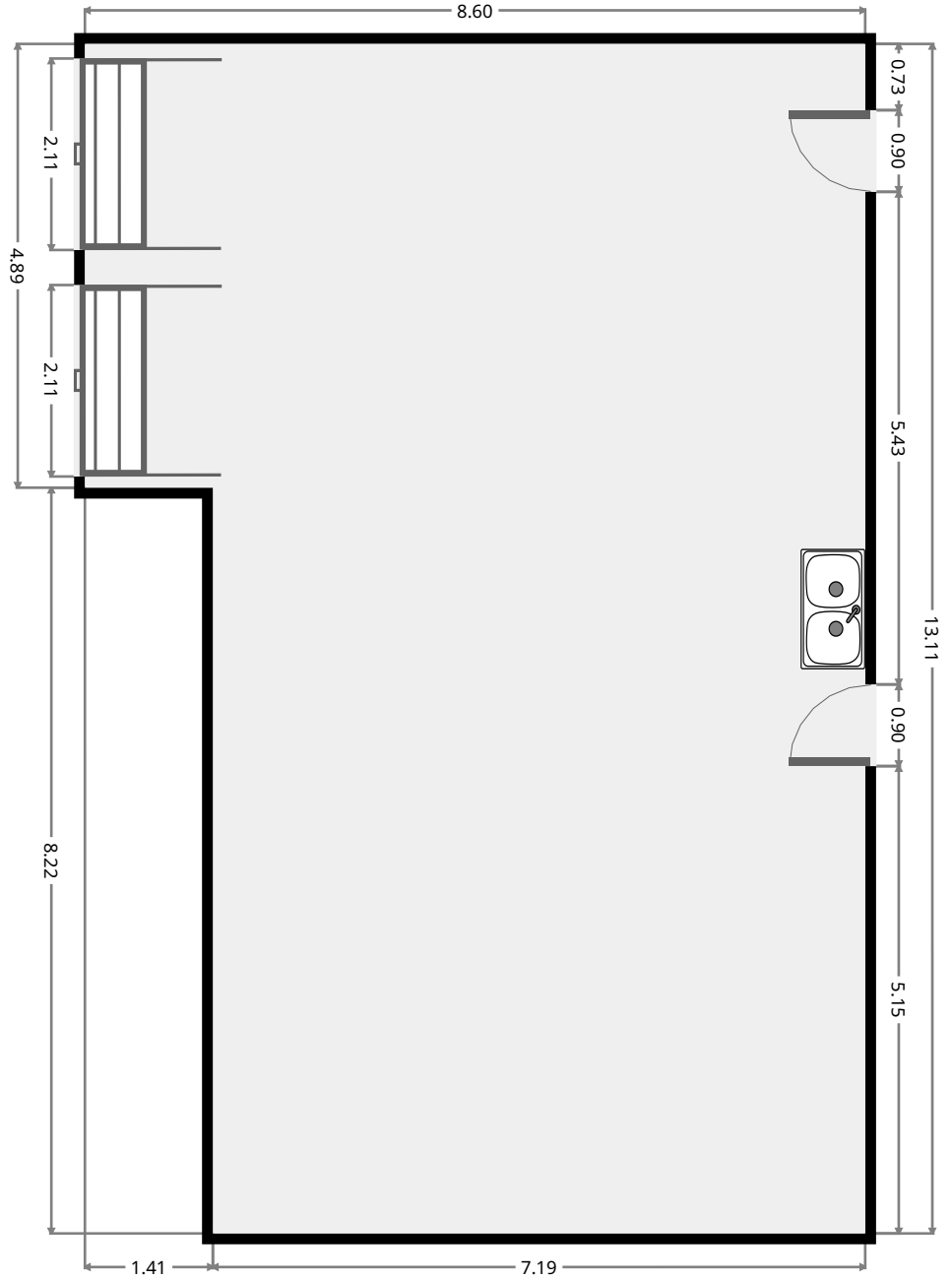
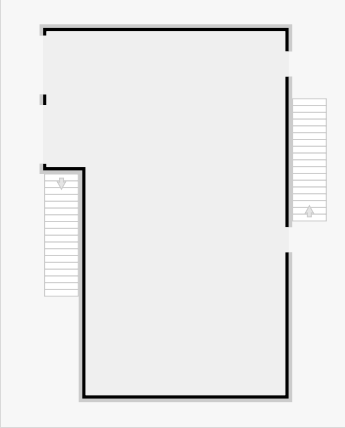
THIS FLOORPLAN IS PROVIDED WITHOUT WARRANTY OF ANY KIND. SENSOPIA DISCLAIMS ANY WARRANTY INCLUDING, WITHOUT LIMITATION, SATISFACTORY QUALITY OR ACCURACY OF DIMENSIONS.



# 276 Elphinstone Street

## Garage

Width: 8.60 m  
Length: 13.11 m  
Area: 101.14 m<sup>2</sup>  
Perimeter: 43.42 m



THIS FLOORPLAN IS PROVIDED WITHOUT WARRANTY OF ANY KIND. SENSOPIA DISCLAIMS ANY WARRANTY INCLUDING, WITHOUT LIMITATION, SATISFACTORY QUALITY OR ACCURACY OF DIMENSIONS.



# 276 Elphinstone Street

## 1st Floor



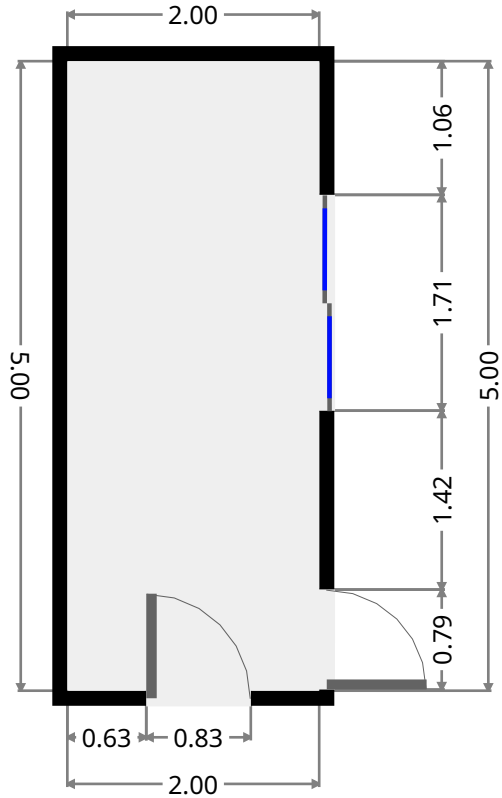
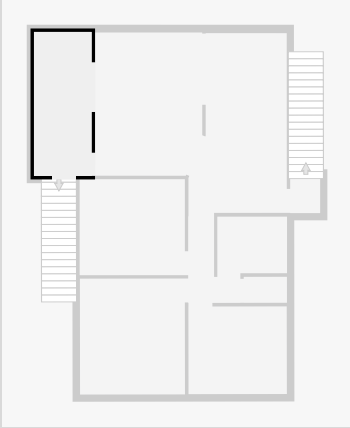
THIS FLOORPLAN IS PROVIDED WITHOUT WARRANTY OF ANY KIND. SENSOPIA DISCLAIMS ANY WARRANTY INCLUDING, WITHOUT LIMITATION, SATISFACTORY QUALITY OR ACCURACY OF DIMENSIONS.



# 276 Elphinstone Street

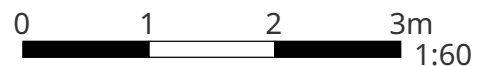
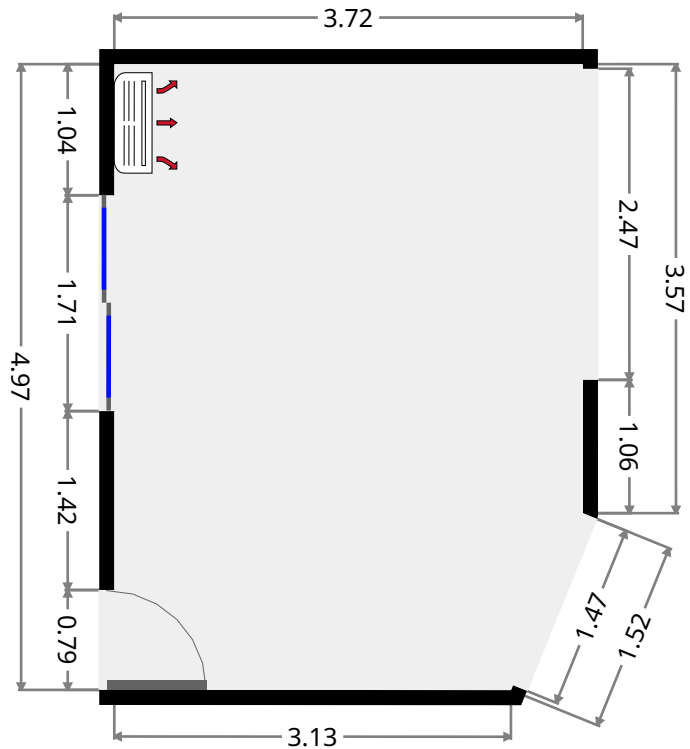
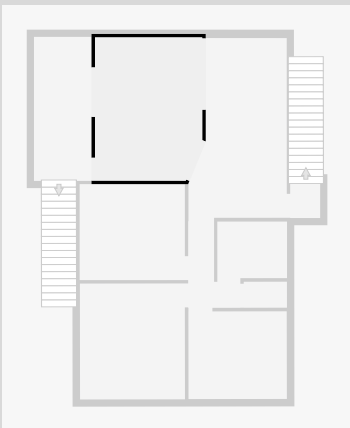
## Sunroom

Width: 2.00 m  
 Length: 5.00 m  
 Area: 9.99 m<sup>2</sup>  
 Perimeter: 13.99 m



## Living Room

Width: 3.72 m  
 Length: 4.97 m  
 Area: 18.08 m<sup>2</sup>  
 Perimeter: 16.92 m

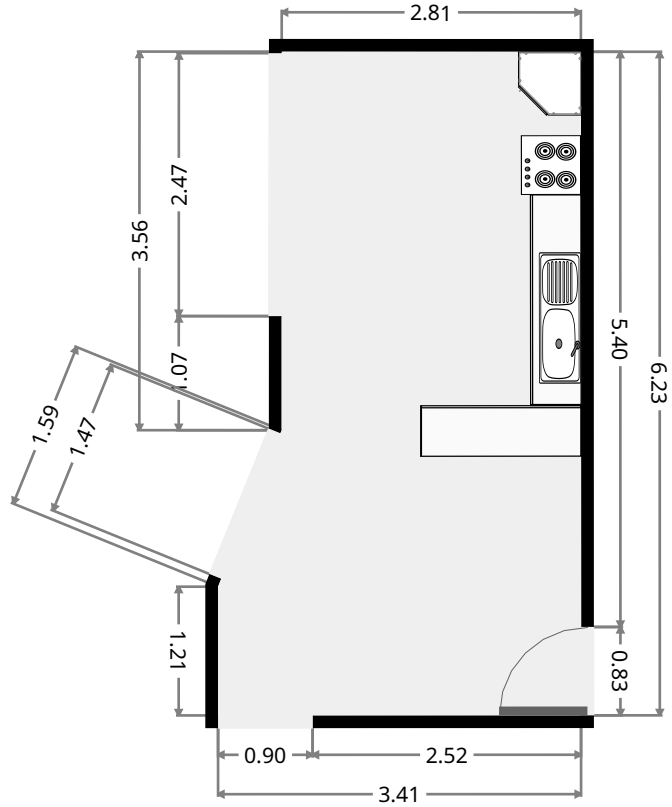
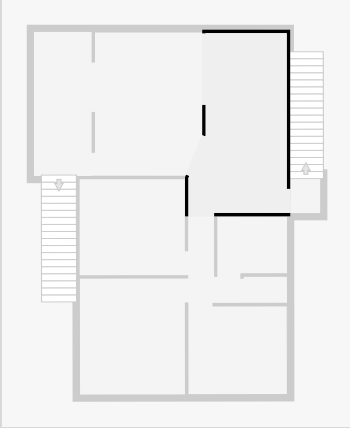


THIS FLOORPLAN IS PROVIDED WITHOUT WARRANTY OF ANY KIND. SENSOPIA DISCLAIMS ANY WARRANTY INCLUDING, WITHOUT LIMITATION, SATISFACTORY QUALITY OR ACCURACY OF DIMENSIONS.

# 276 Elphinstone Street

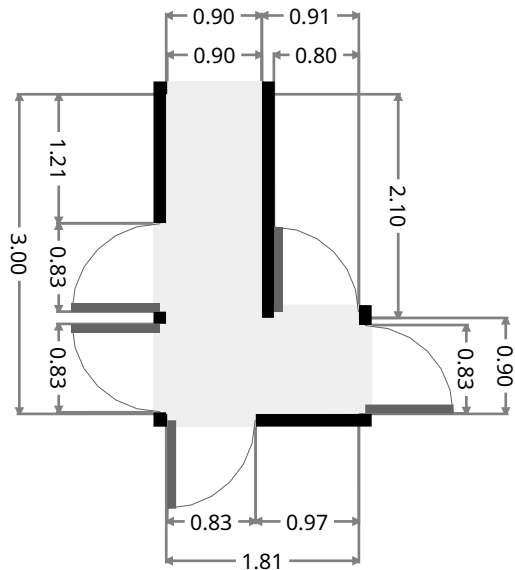
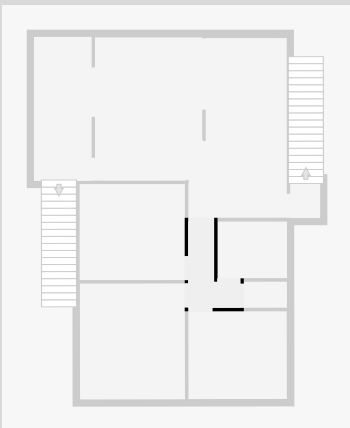
## Kitchen/Dining

Width: 3.41 m  
 Length: 6.23 m  
 Area: 18.70 m<sup>2</sup>  
 Perimeter: 18.81 m



## Hall

Width: 1.81 m  
 Length: 3.00 m  
 Area: 3.52 m<sup>2</sup>  
 Perimeter: 9.63 m



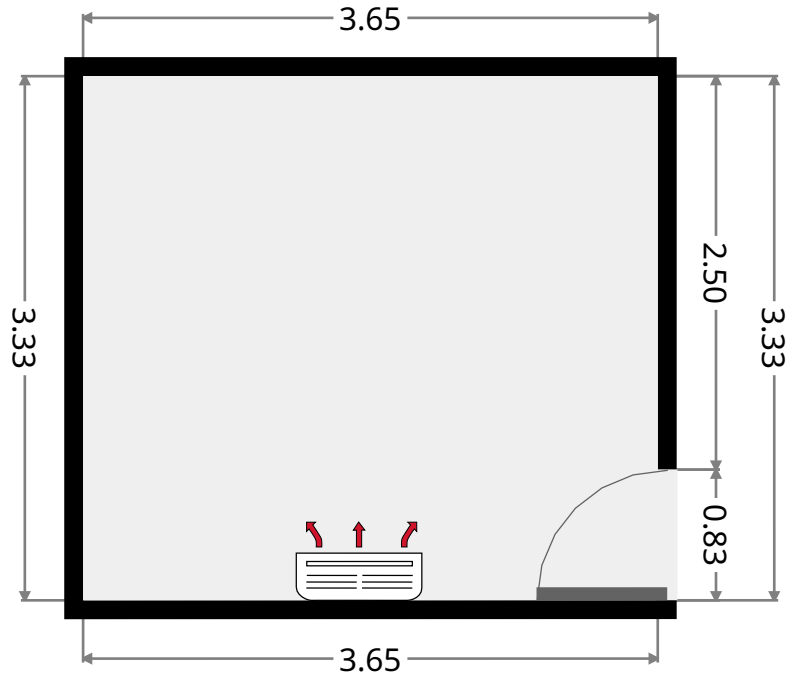
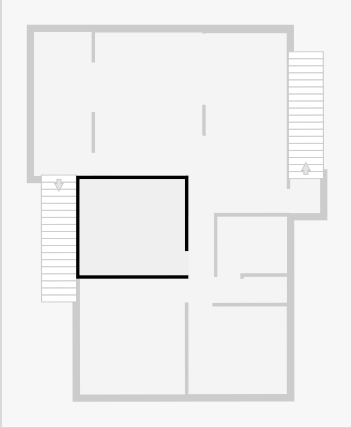
THIS FLOORPLAN IS PROVIDED WITHOUT WARRANTY OF ANY KIND. SENSOPIA DISCLAIMS ANY WARRANTY INCLUDING, WITHOUT LIMITATION, SATISFACTORY QUALITY OR ACCURACY OF DIMENSIONS.



# 276 Elphinstone Street

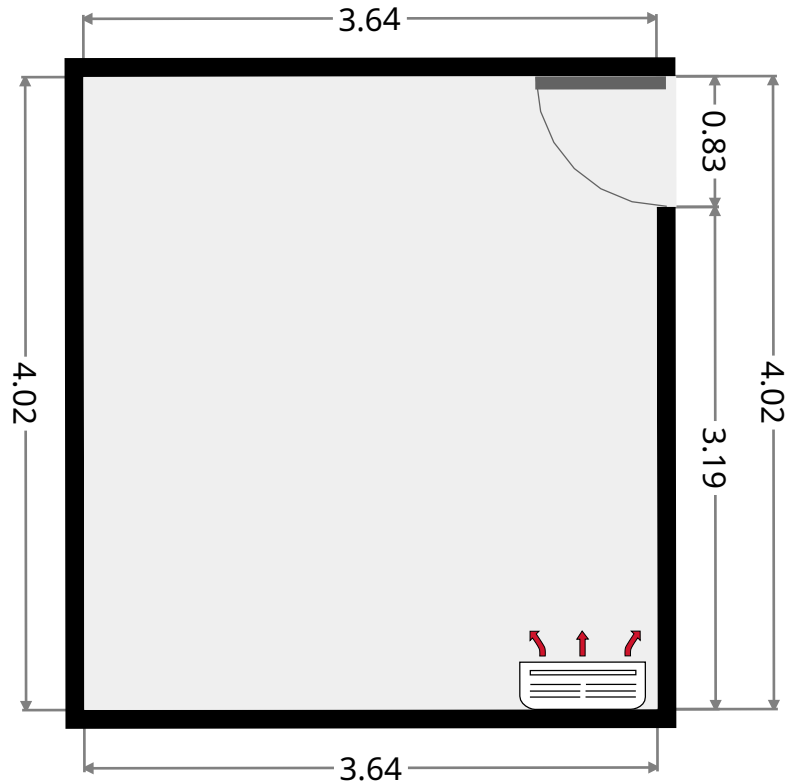
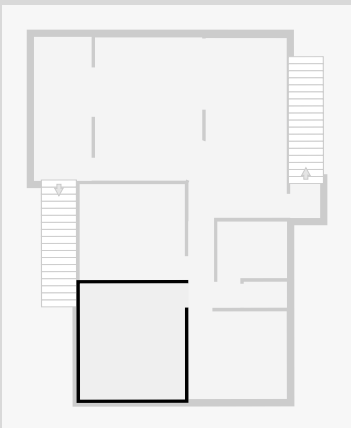
## Bedroom

Width: 3.33 m  
Length: 3.65 m  
Area: 12.15 m<sup>2</sup>  
Perimeter: 13.96 m

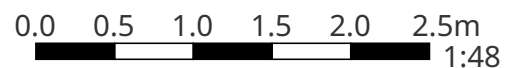


## Bedroom

Width: 3.64 m  
Length: 4.02 m  
Area: 14.63 m<sup>2</sup>  
Perimeter: 15.32 m



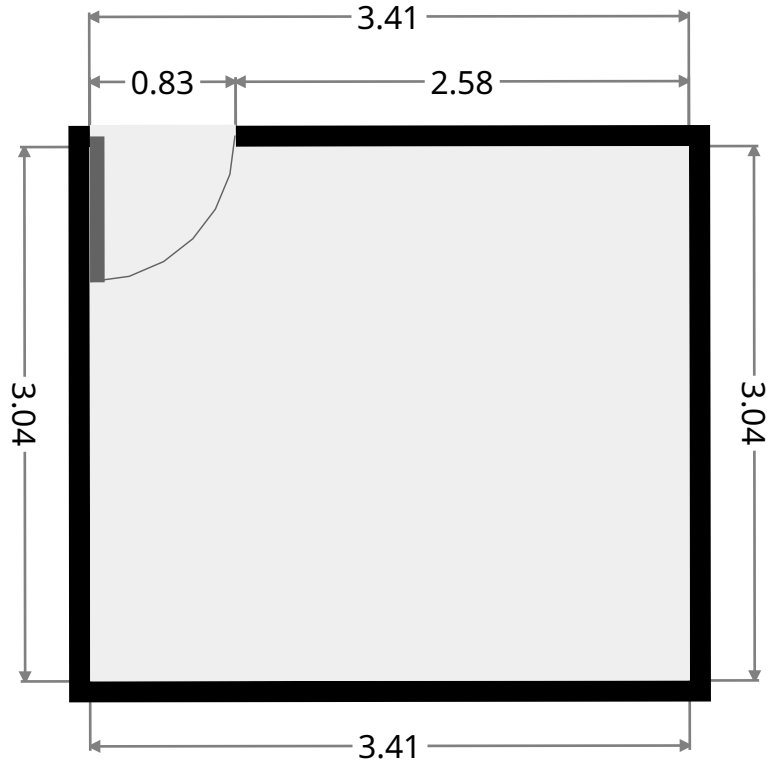
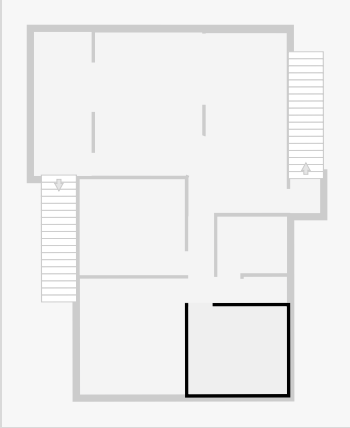
THIS FLOORPLAN IS PROVIDED WITHOUT WARRANTY OF ANY KIND. SENSOPIA DISCLAIMS ANY WARRANTY INCLUDING, WITHOUT LIMITATION, SATISFACTORY QUALITY OR ACCURACY OF DIMENSIONS.



# 276 Elphinstone Street

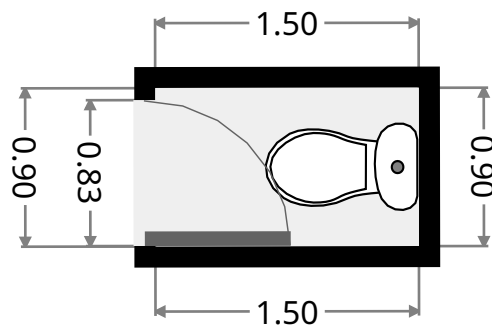
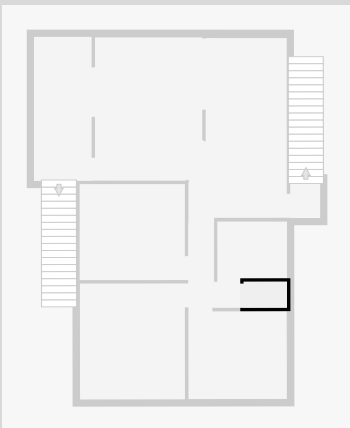
## Bedroom

Width: 3.04 m  
Length: 3.41 m  
Area: 10.37 m<sup>2</sup>  
Perimeter: 12.90 m



## Toilet

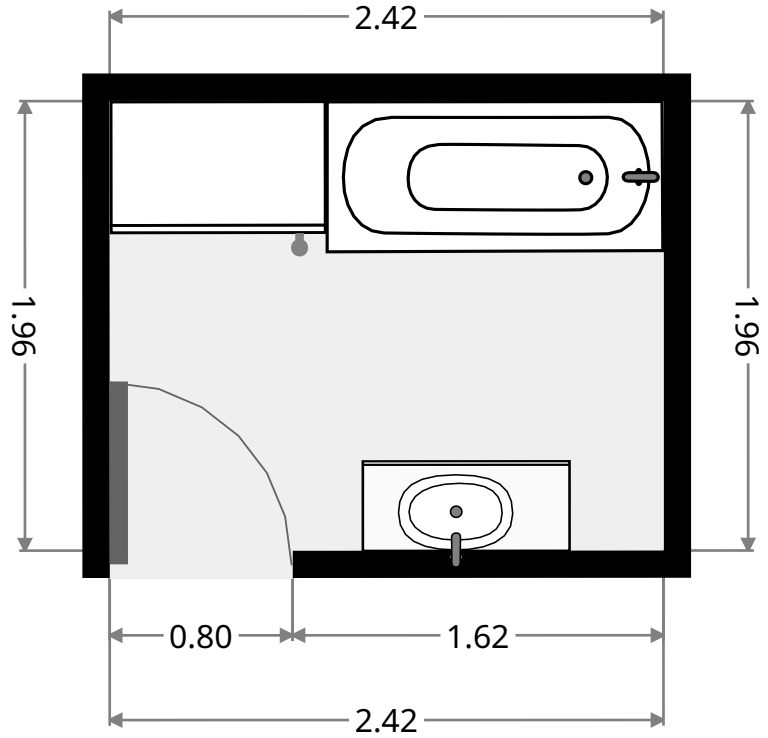
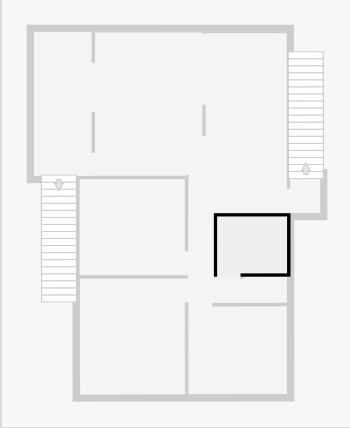
Width: 0.90 m  
Length: 1.50 m  
Area: 1.35 m<sup>2</sup>  
Perimeter: 4.80 m



# 276 Elphinstone Street

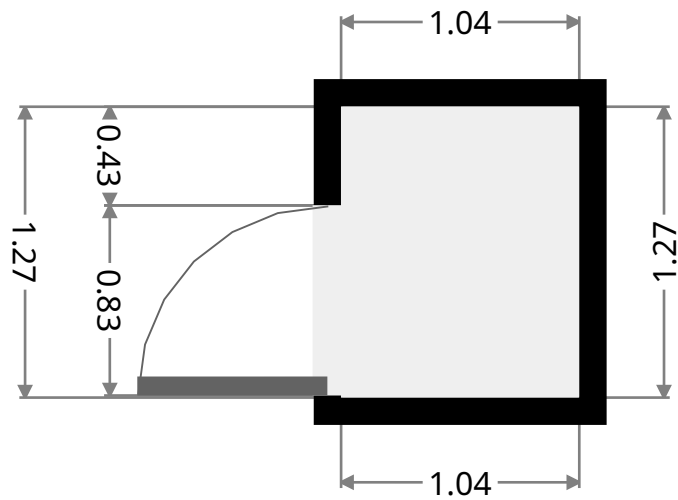
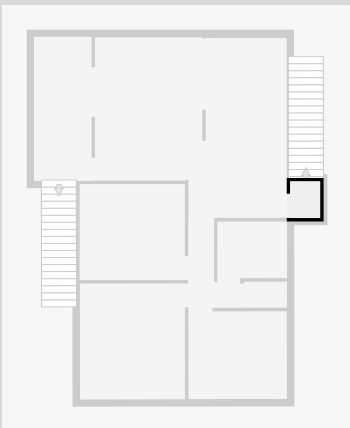
## Bathroom

Width: 1.96 m  
 Length: 2.42 m  
 Area: 4.75 m<sup>2</sup>  
 Perimeter: 8.76 m



## Hall

Width: 1.04 m  
 Length: 1.27 m  
 Area: 1.32 m<sup>2</sup>  
 Perimeter: 4.62 m



THIS FLOORPLAN IS PROVIDED WITHOUT WARRANTY OF ANY KIND. SENSOPIA DISCLAIMS ANY WARRANTY INCLUDING, WITHOUT LIMITATION, SATISFACTORY QUALITY OR ACCURACY OF DIMENSIONS.

