

274 Elphinstone Street

SUBMITTED BY

Ray White Rockhampton Casey
stockers@cqoz.com

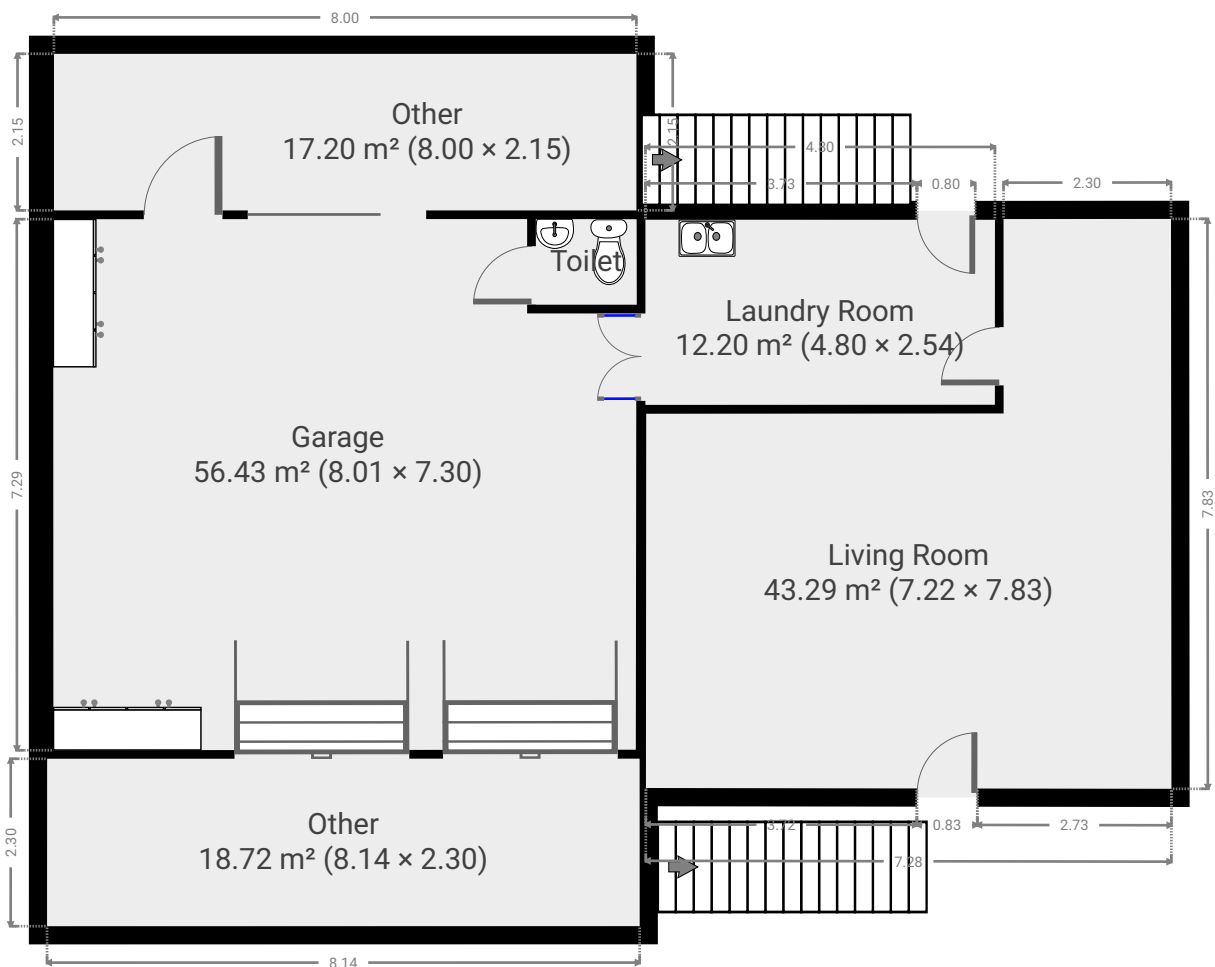
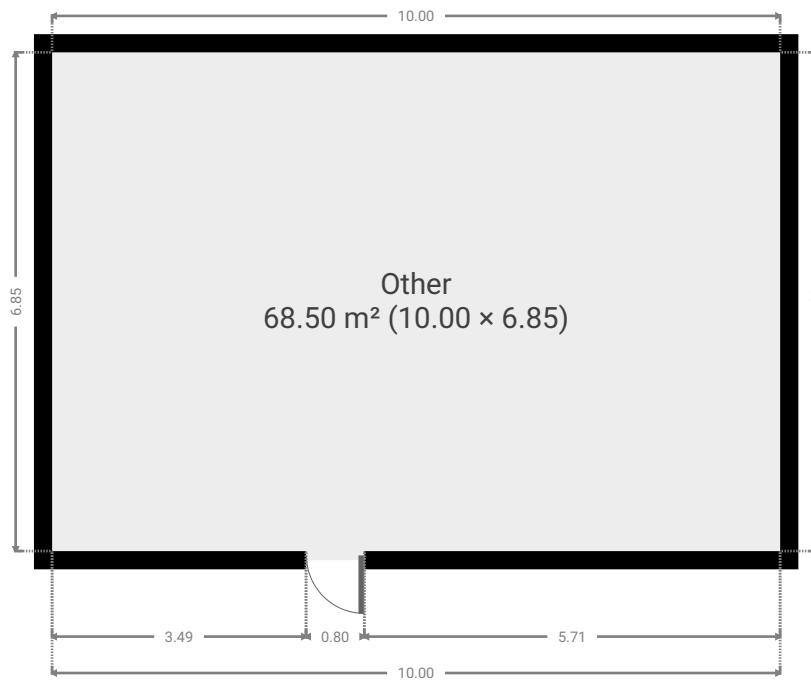
CREATED ON

2021-11-29

Floors

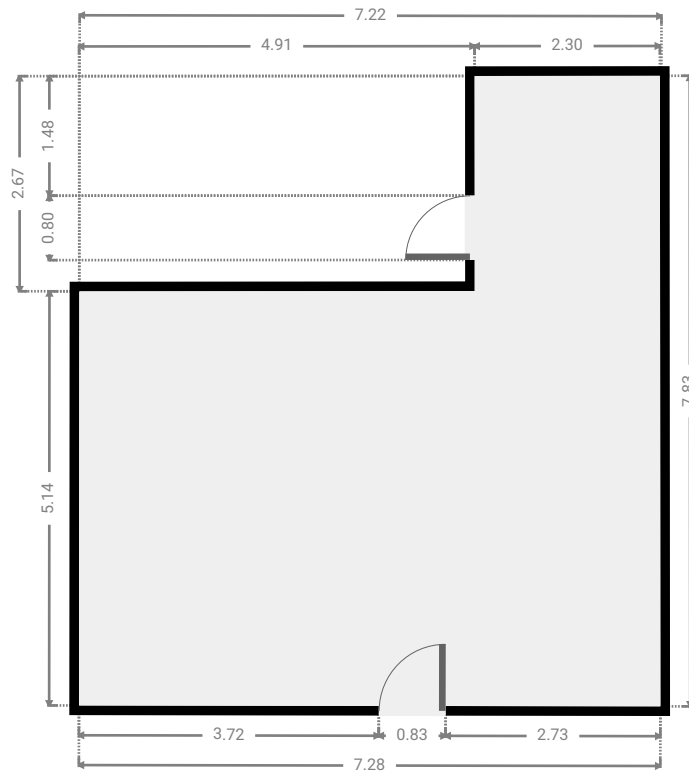
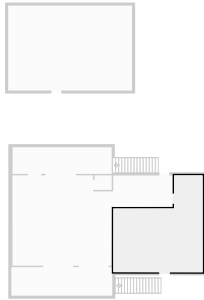
2

▼ Ground Floor



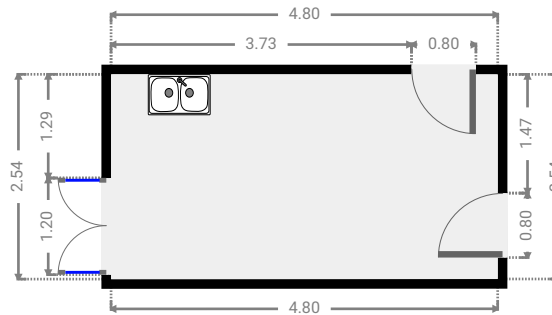
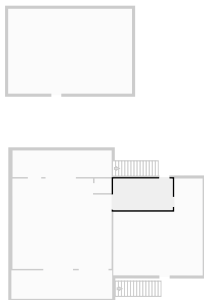
▼ **Living Room**
Ground Floor

WIDTH: 7.22 m • LENGTH: 7.83 m
AREA: 43.29 m² • PERIMETER: 30.07 m



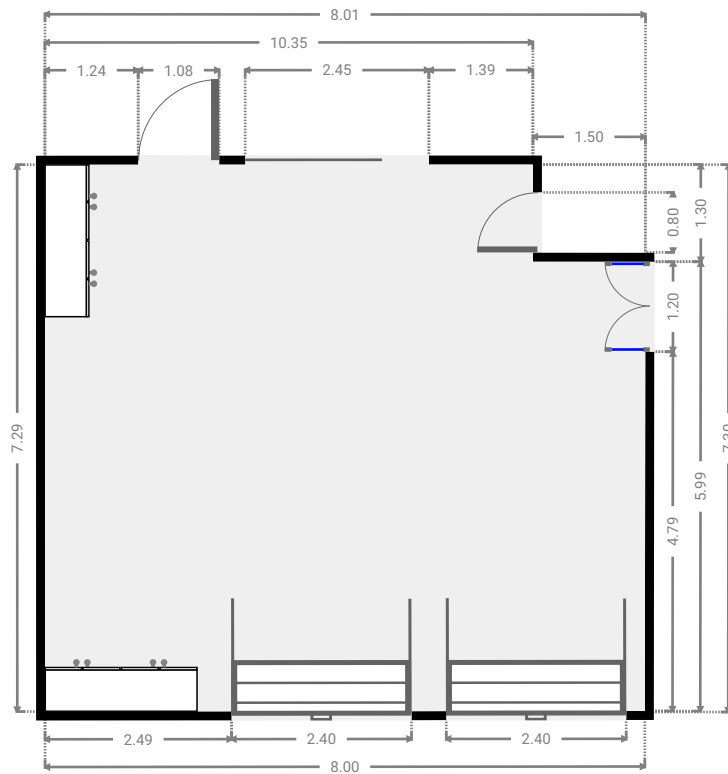
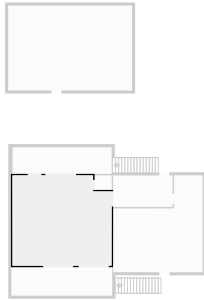
▼ **Laundry Room**
Ground Floor

WIDTH: 4.80 m • LENGTH: 2.54 m
AREA: 12.20 m² • PERIMETER: 14.68 m



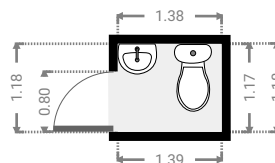
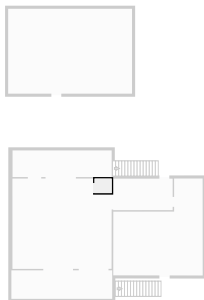
▼ **Garage**
Ground Floor

WIDTH: 8.01 m • LENGTH: 7.30 m
AREA: 56.43 m² • PERIMETER: 30.59 m



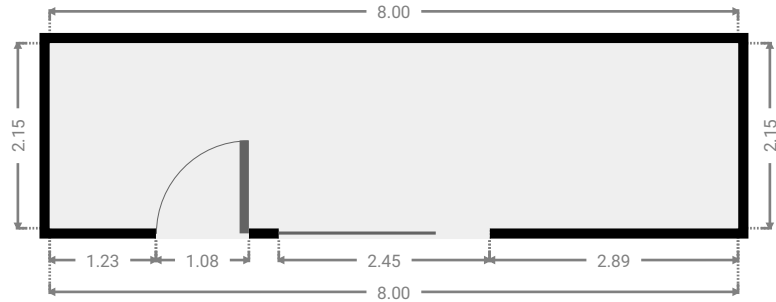
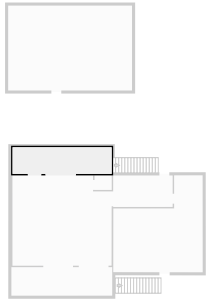
▼ **Toilet**
Ground Floor

WIDTH: 1.39 m • LENGTH: 1.18 m
AREA: 1.63 m² • PERIMETER: 5.12 m



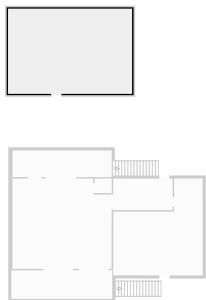
▼ **Other**
Ground Floor

WIDTH: 8.00 m • LENGTH: 2.15 m
AREA: 17.20 m² • PERIMETER: 20.30 m



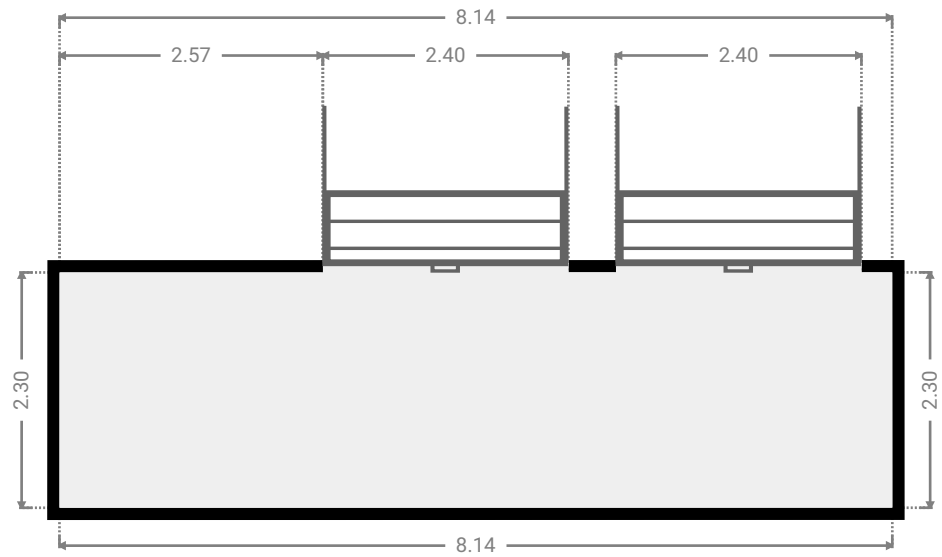
▼ **Other**
Ground Floor

WIDTH: 10.00 m • LENGTH: 6.85 m
AREA: 68.50 m² • PERIMETER: 33.70 m

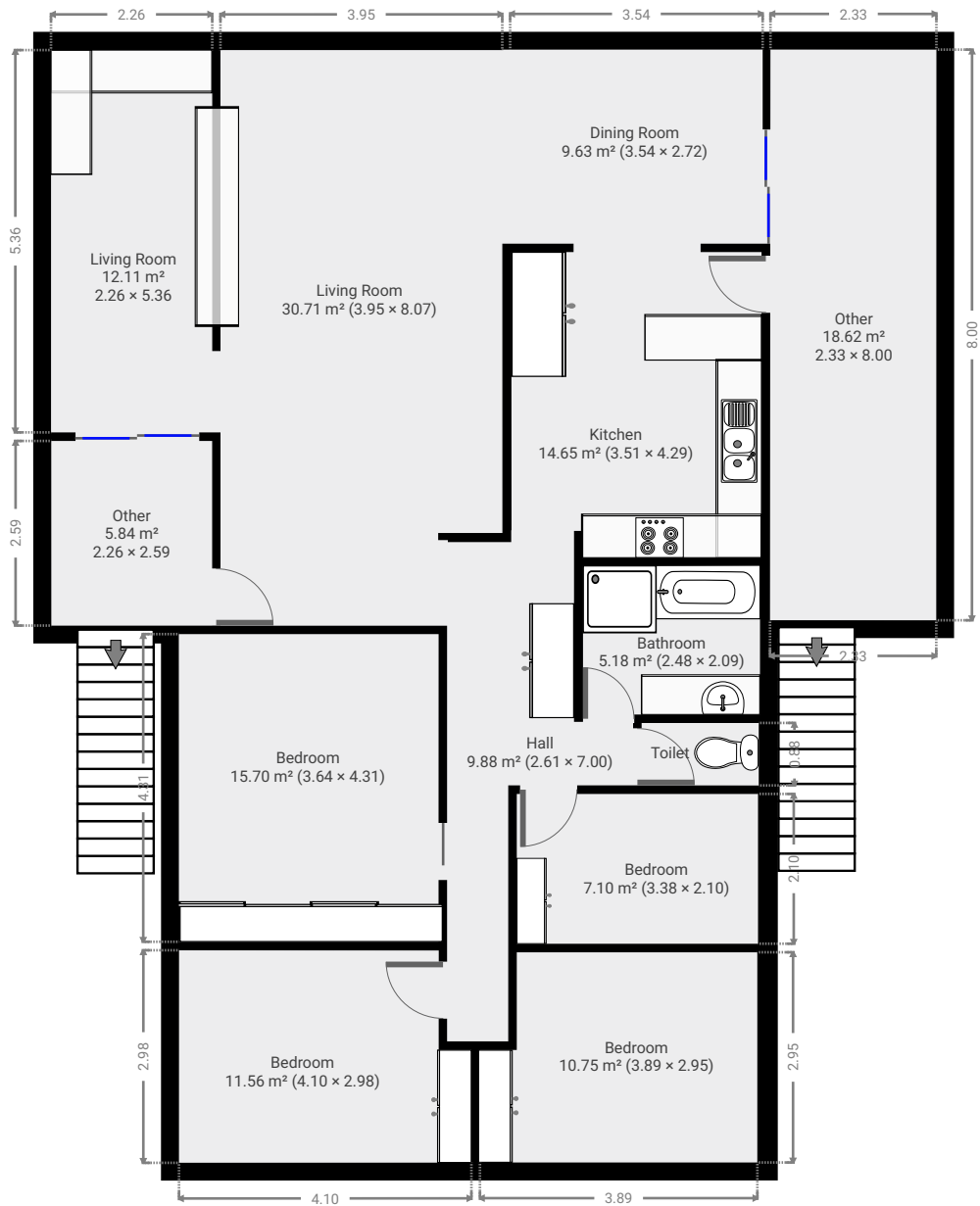


▼ Other
Ground Floor

WIDTH: 8.14 m • LENGTH: 2.30 m
AREA: 18.72 m² • PERIMETER: 20.88 m

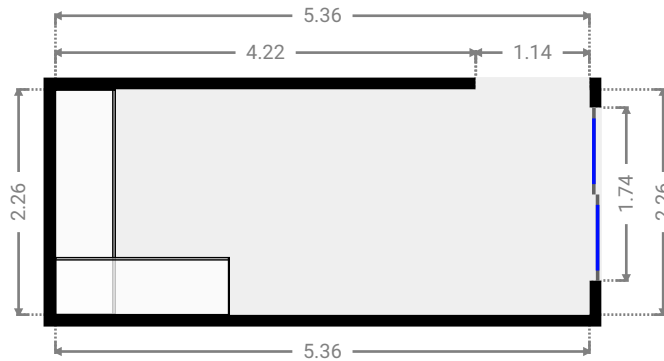


▼ 1st Floor



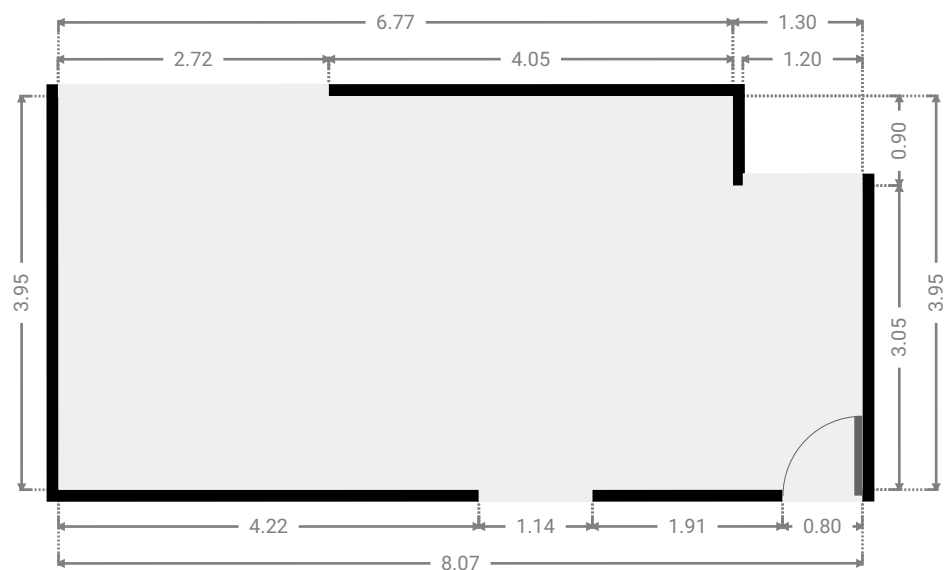
▼ **Living Room**
1st Floor

WIDTH: 5.36 m • LENGTH: 2.26 m
AREA: 12.11 m² • PERIMETER: 15.24 m



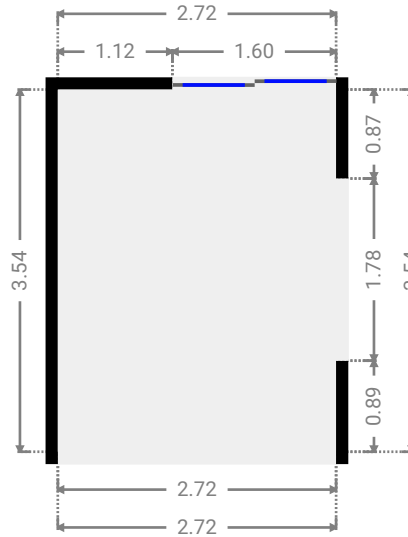
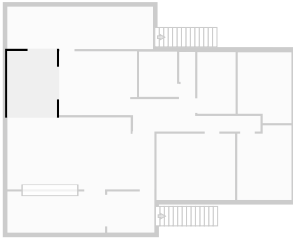
▼ **Living Room**
1st Floor

WIDTH: 8.07 m • LENGTH: 3.95 m
AREA: 30.71 m² • PERIMETER: 24.04 m



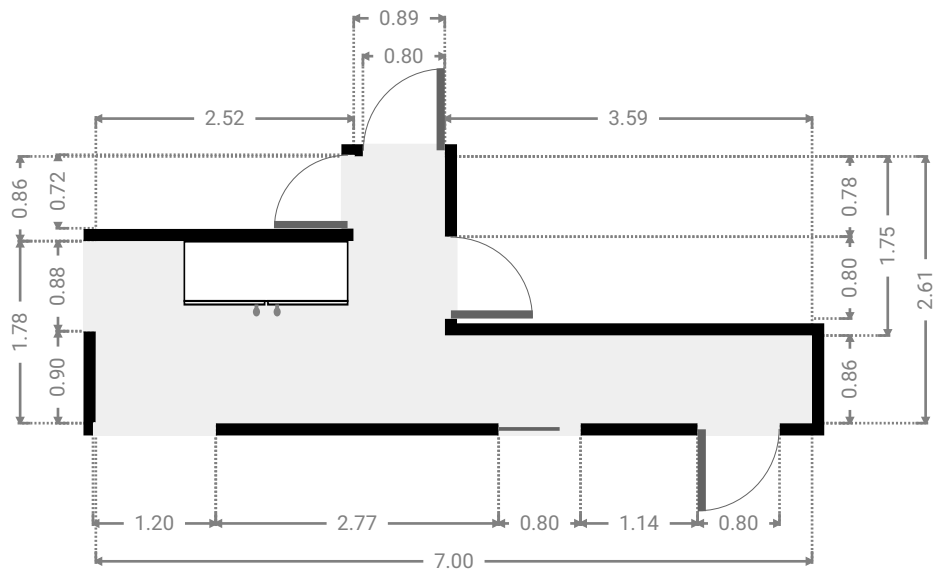
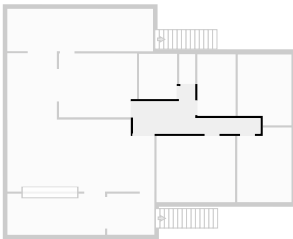
▼ Dining Room
1st Floor

WIDTH: 2.72 m • LENGTH: 3.54 m
AREA: 9.63 m² • PERIMETER: 12.52 m



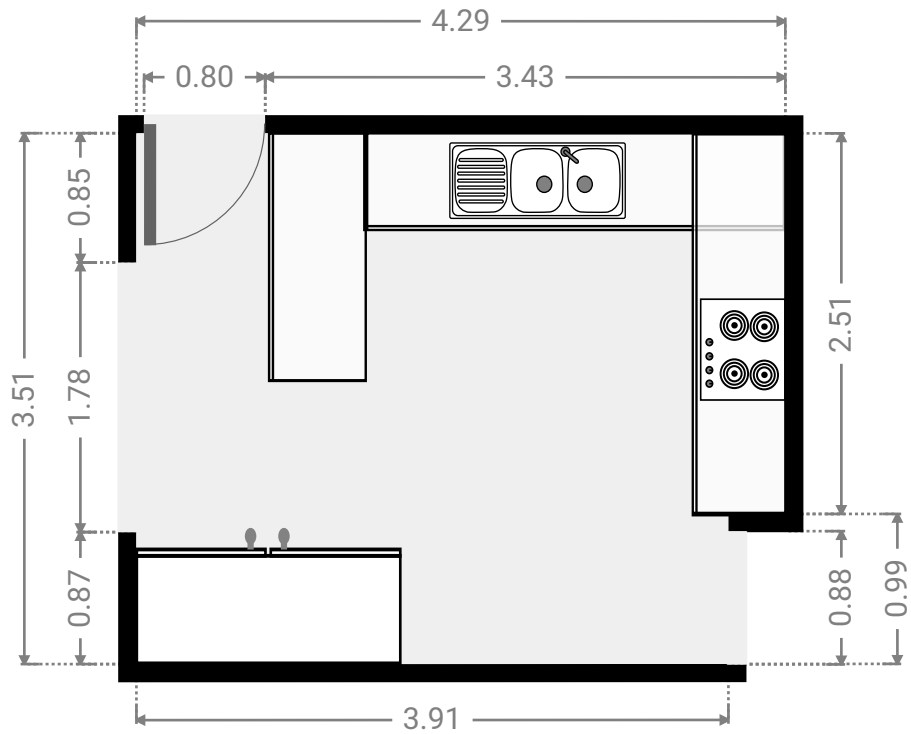
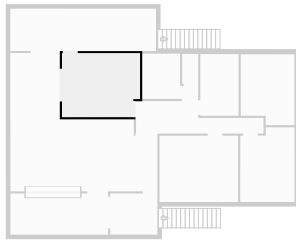
▼ Hall
1st Floor

WIDTH: 7.00 m • LENGTH: 2.61 m
AREA: 9.88 m² • PERIMETER: 19.21 m



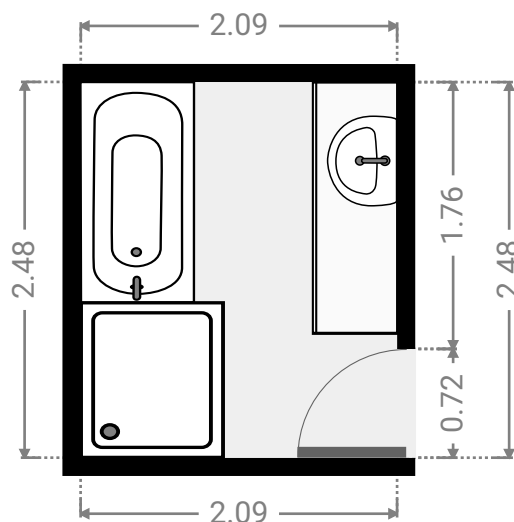
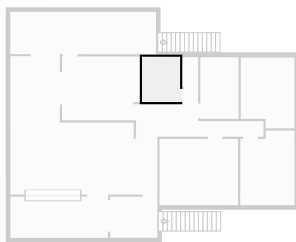
▼ **Kitchen**
1st Floor

WIDTH: 4.29 m • LENGTH: 3.51 m
AREA: 14.65 m² • PERIMETER: 15.58 m



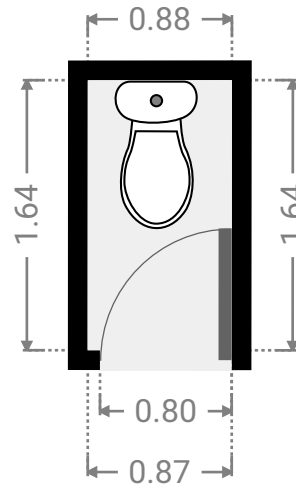
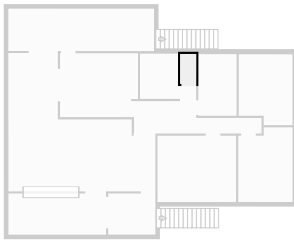
▼ **Bathroom**
1st Floor

WIDTH: 2.09 m • LENGTH: 2.48 m
AREA: 5.18 m² • PERIMETER: 9.14 m



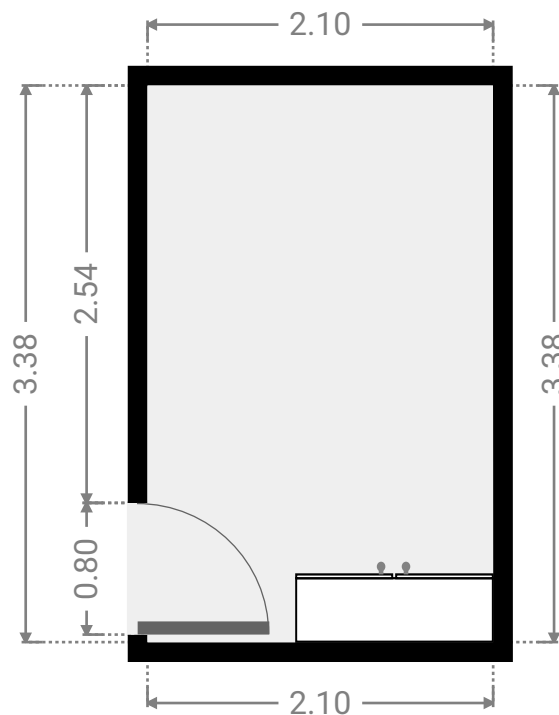
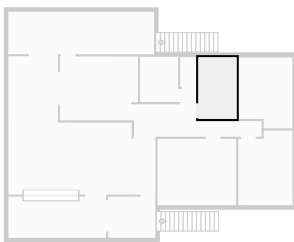
▼ **Toilet**
1st Floor

WIDTH: 0.88 m • LENGTH: 1.64 m
AREA: 1.44 m² • PERIMETER: 5.03 m



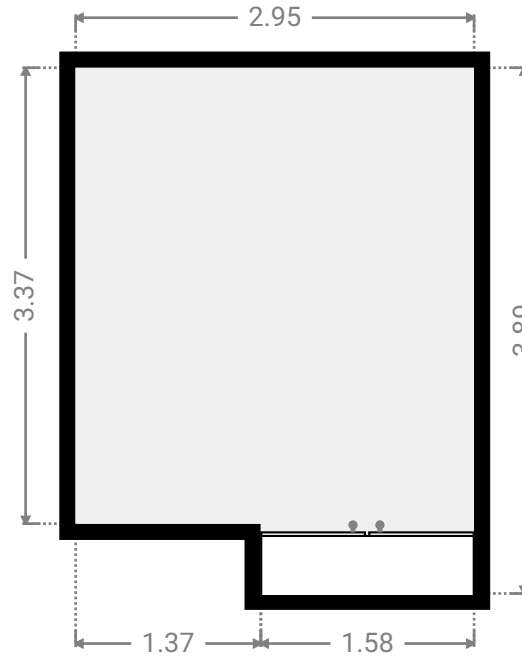
▼ **Bedroom**
1st Floor

WIDTH: 2.10 m • LENGTH: 3.38 m
AREA: 7.10 m² • PERIMETER: 10.96 m



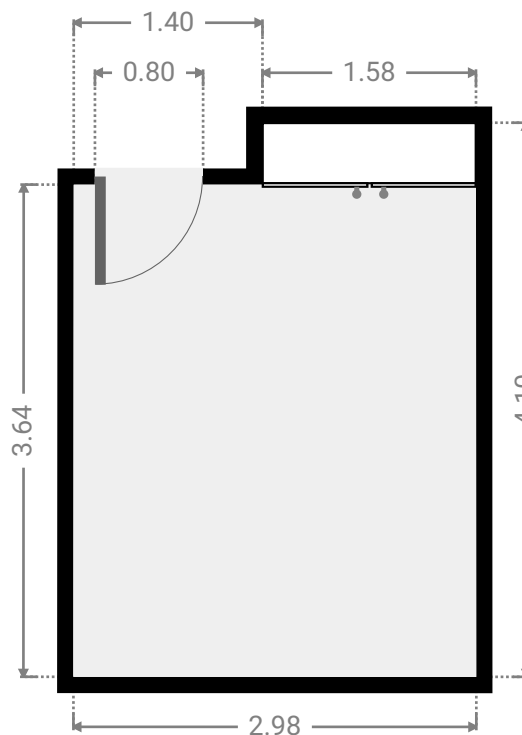
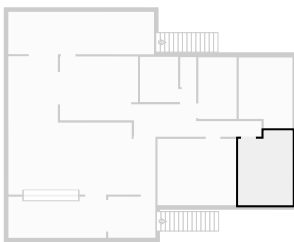
▼ **Bedroom**
1st Floor

WIDTH: 2.95 m • LENGTH: 3.89 m
AREA: 10.75 m² • PERIMETER: 13.67 m



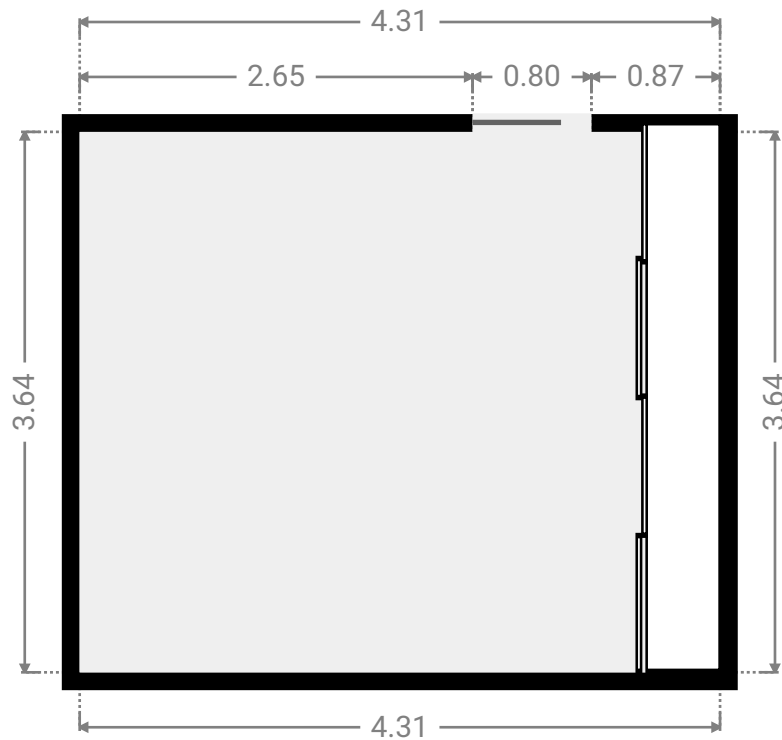
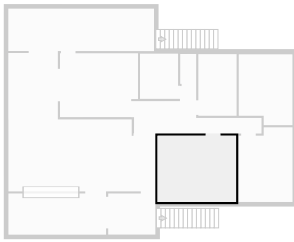
▼ **Bedroom**
1st Floor

WIDTH: 2.98 m • LENGTH: 4.10 m
AREA: 11.56 m² • PERIMETER: 14.15 m



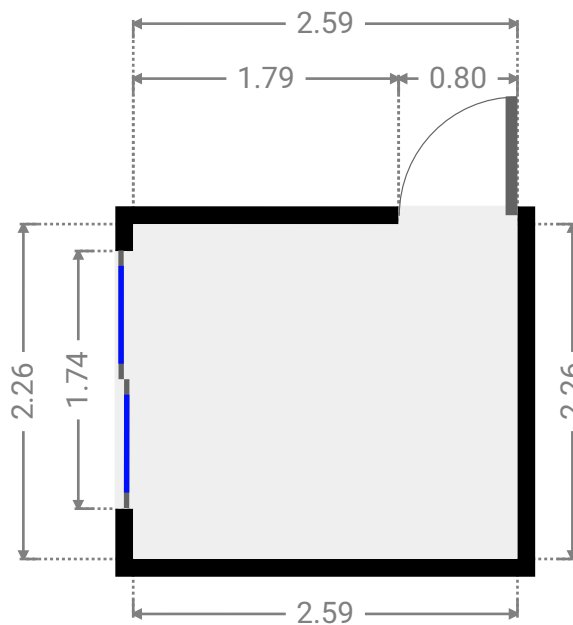
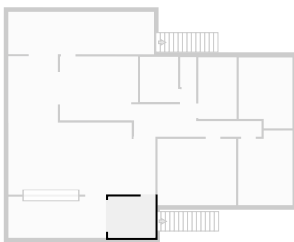
▼ **Bedroom**
1st Floor

WIDTH: 4.31 m • LENGTH: 3.64 m
AREA: 15.70 m² • PERIMETER: 15.91 m



▼ **Other**
1st Floor

WIDTH: 2.59 m • LENGTH: 2.26 m
AREA: 5.84 m² • PERIMETER: 9.69 m



▼ Other
1st Floor

WIDTH: 8.00 m • LENGTH: 2.33 m
AREA: 18.62 m² • PERIMETER: 20.66 m

