

Ray White Rockhampton
Rockhampton.pm2@raywhite.com
(07)4923 0000
2016-11-08

112 m²

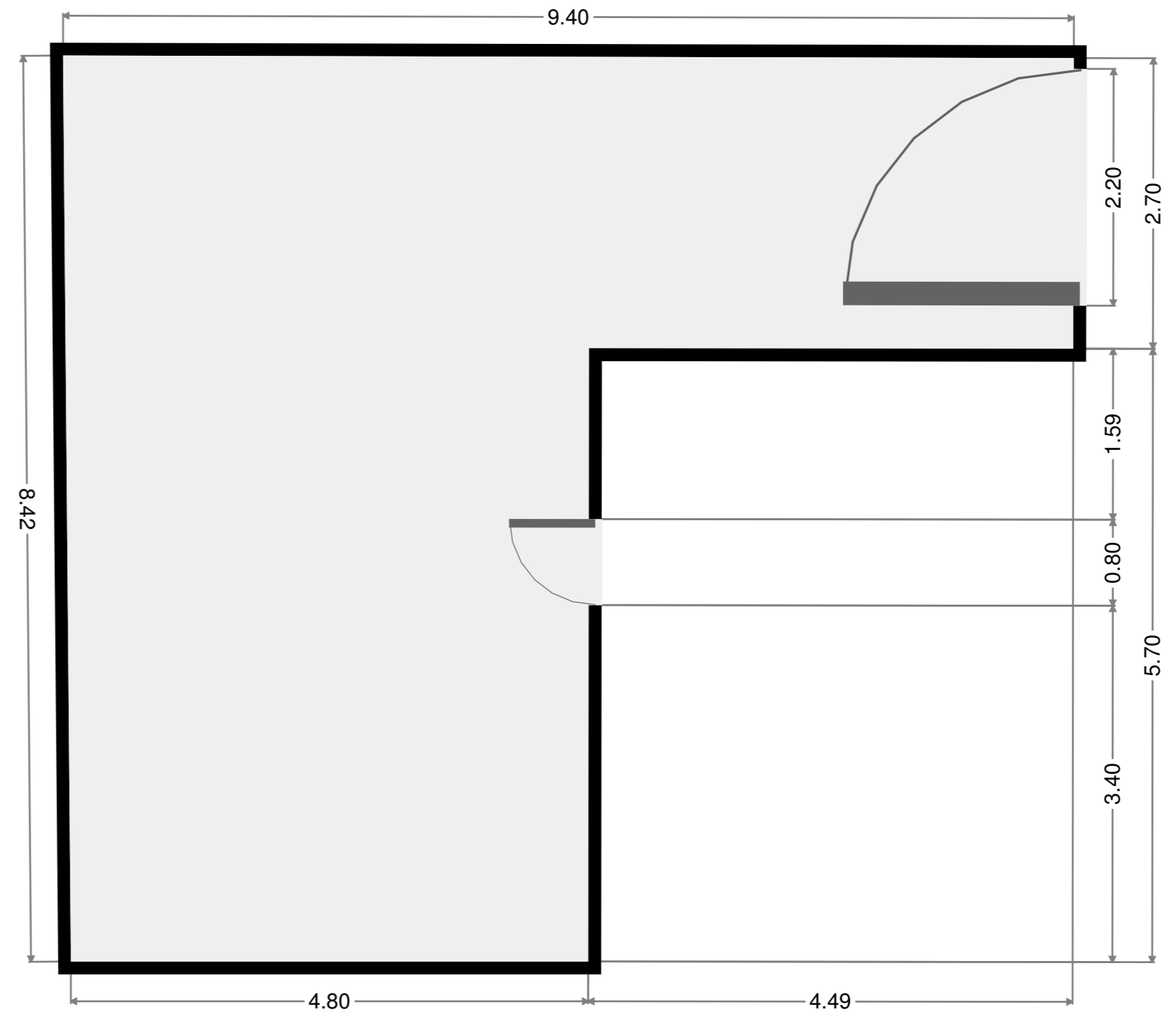
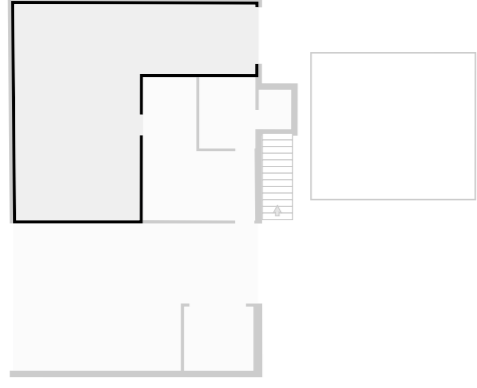
2 Floors

2 Bedrooms

1 Bathroom

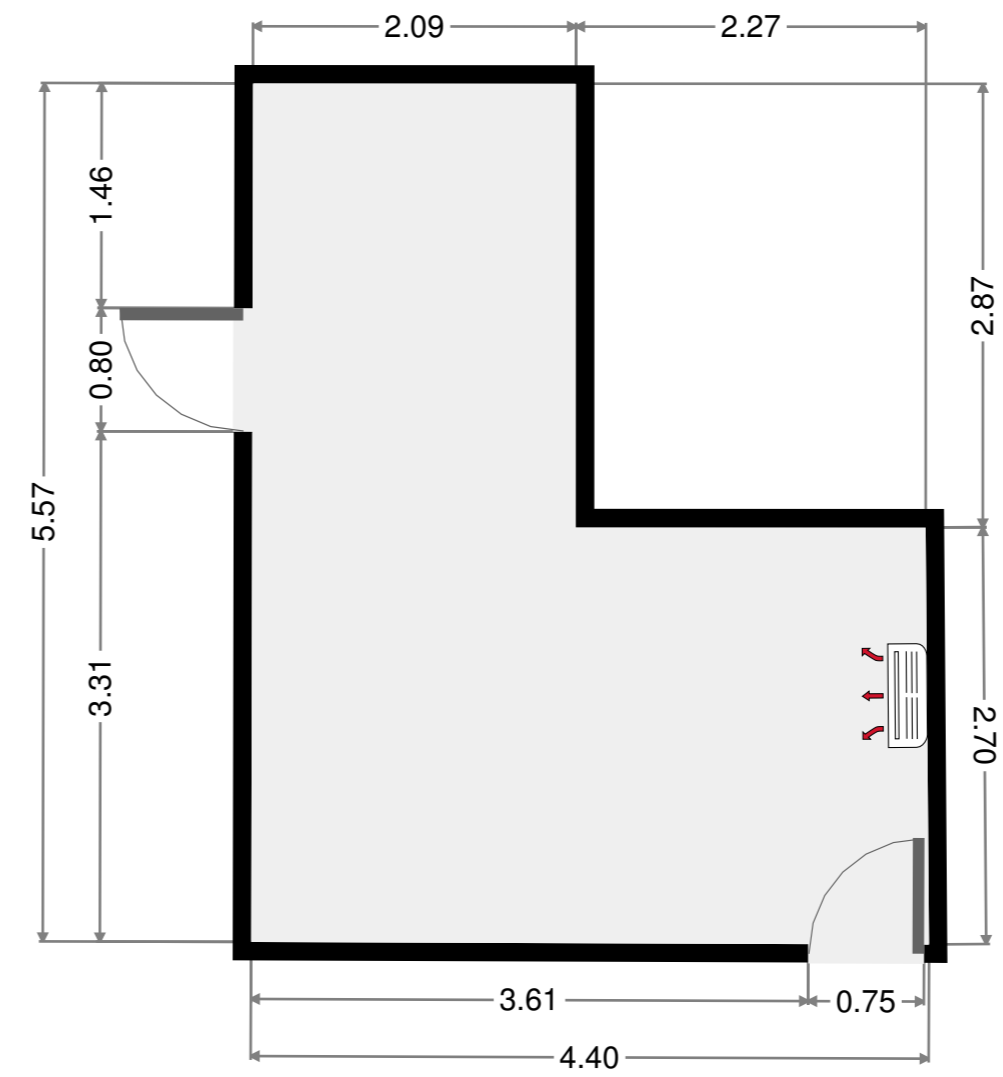
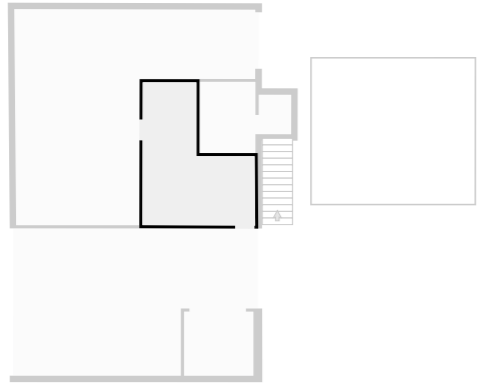
Storage Area

Width: 8.42 m
 Length: 9.40 m
 Area: 52.94 m²
 Perimeter: 35.51 m
 Ceiling Height: 2.17 m



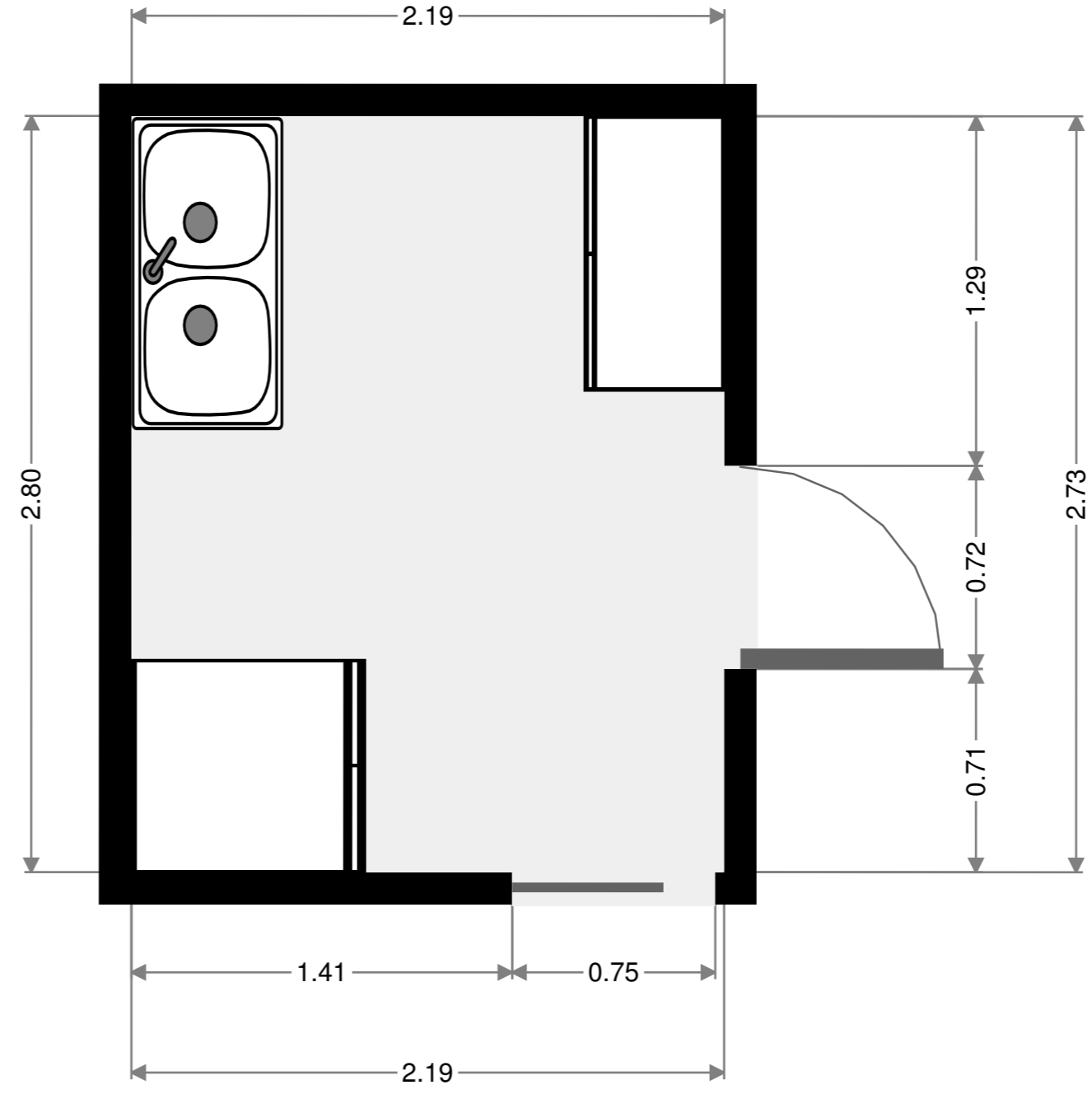
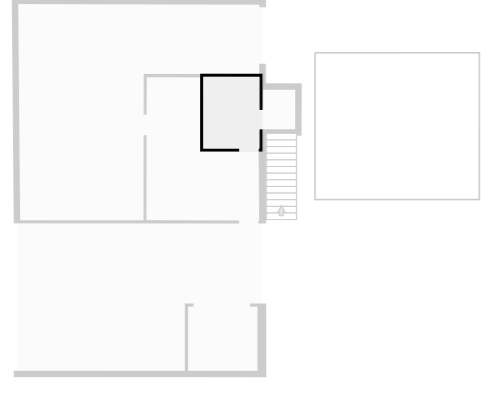
Living Room

Width: 4.40 m
 Length: 5.57 m
 Area: 17.83 m²
 Perimeter: 19.89 m
 Ceiling Height: 2.17 m



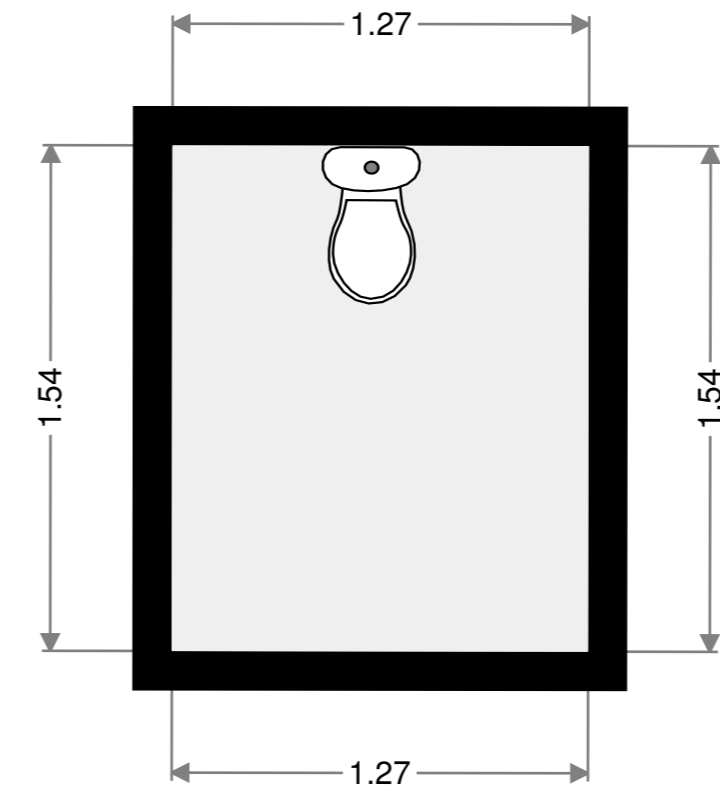
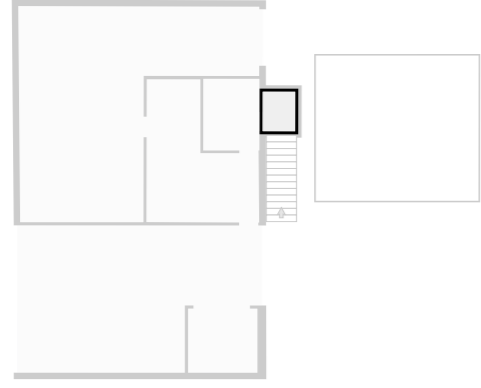
Laundry Room

Width: 2.19 m
Length: 2.80 m
Area: 6.11 m²
Perimeter: 9.96 m



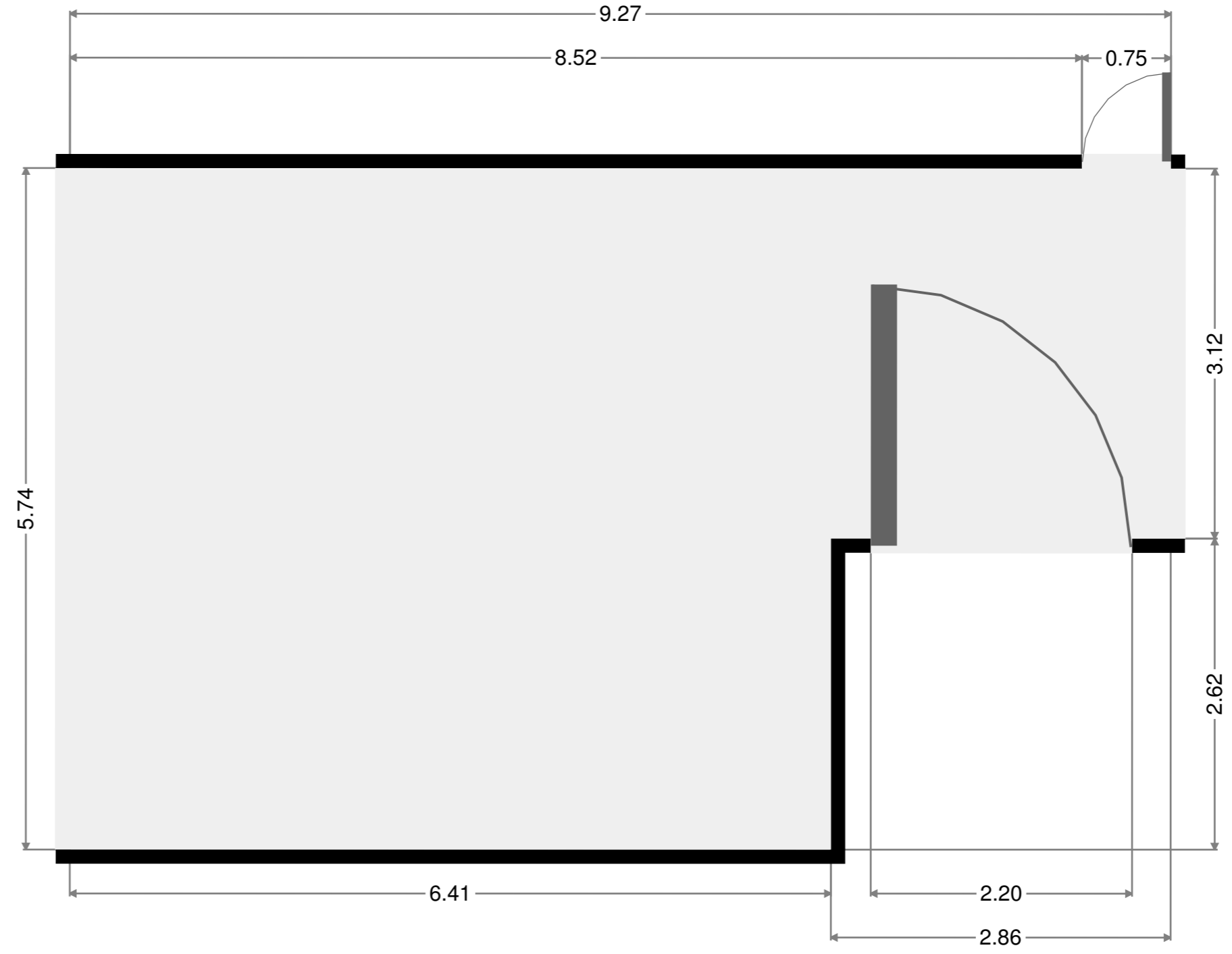
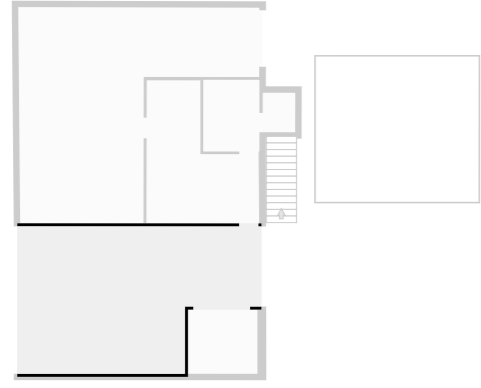
Toilet

Width: 1.27 m
Length: 1.54 m
Area: 1.95 m²
Perimeter: 5.61 m



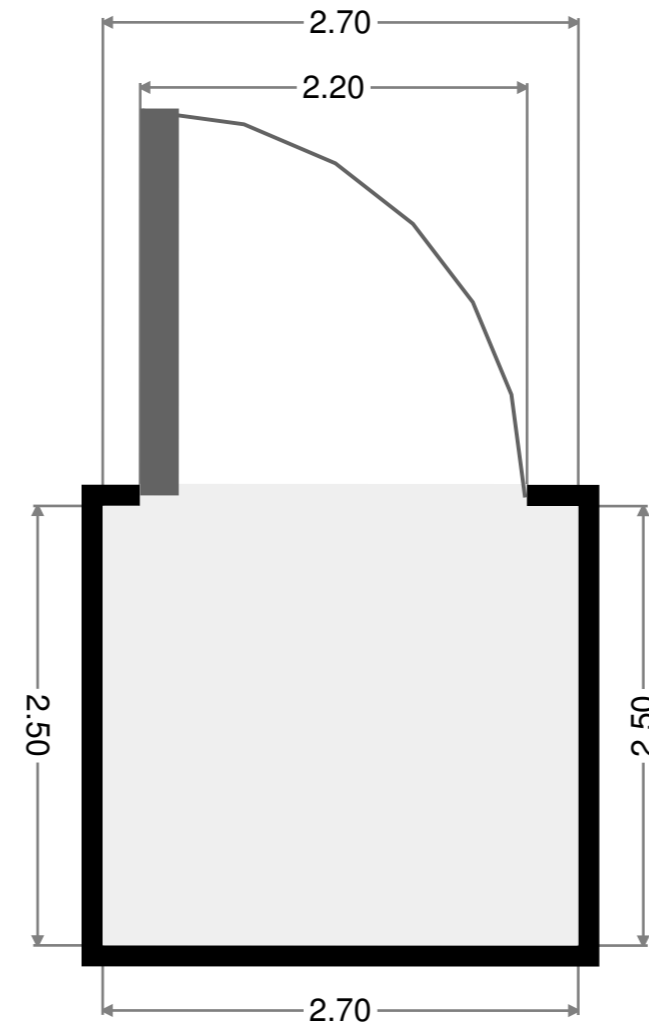
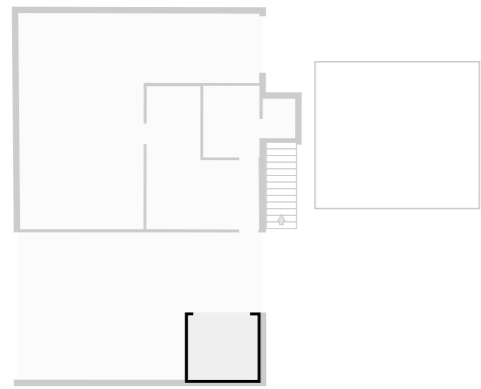
Garage

Width: 5.74 m
 Length: 9.27 m
 Area: 45.69 m²
 Perimeter: 30.01 m
 Ceiling Height: 2.17 m



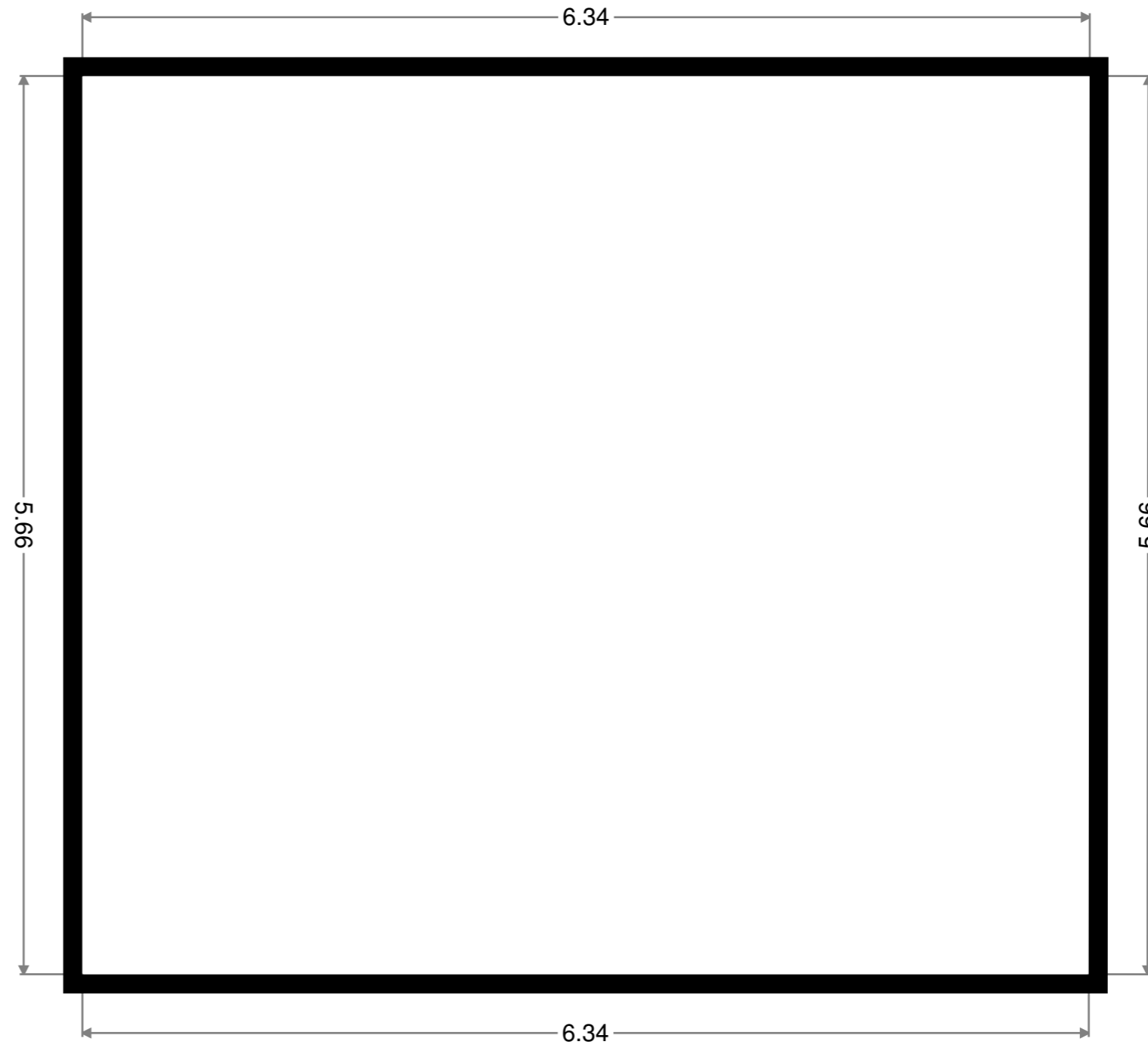
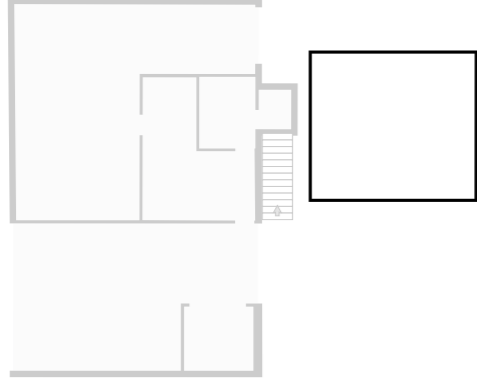
Storage Area

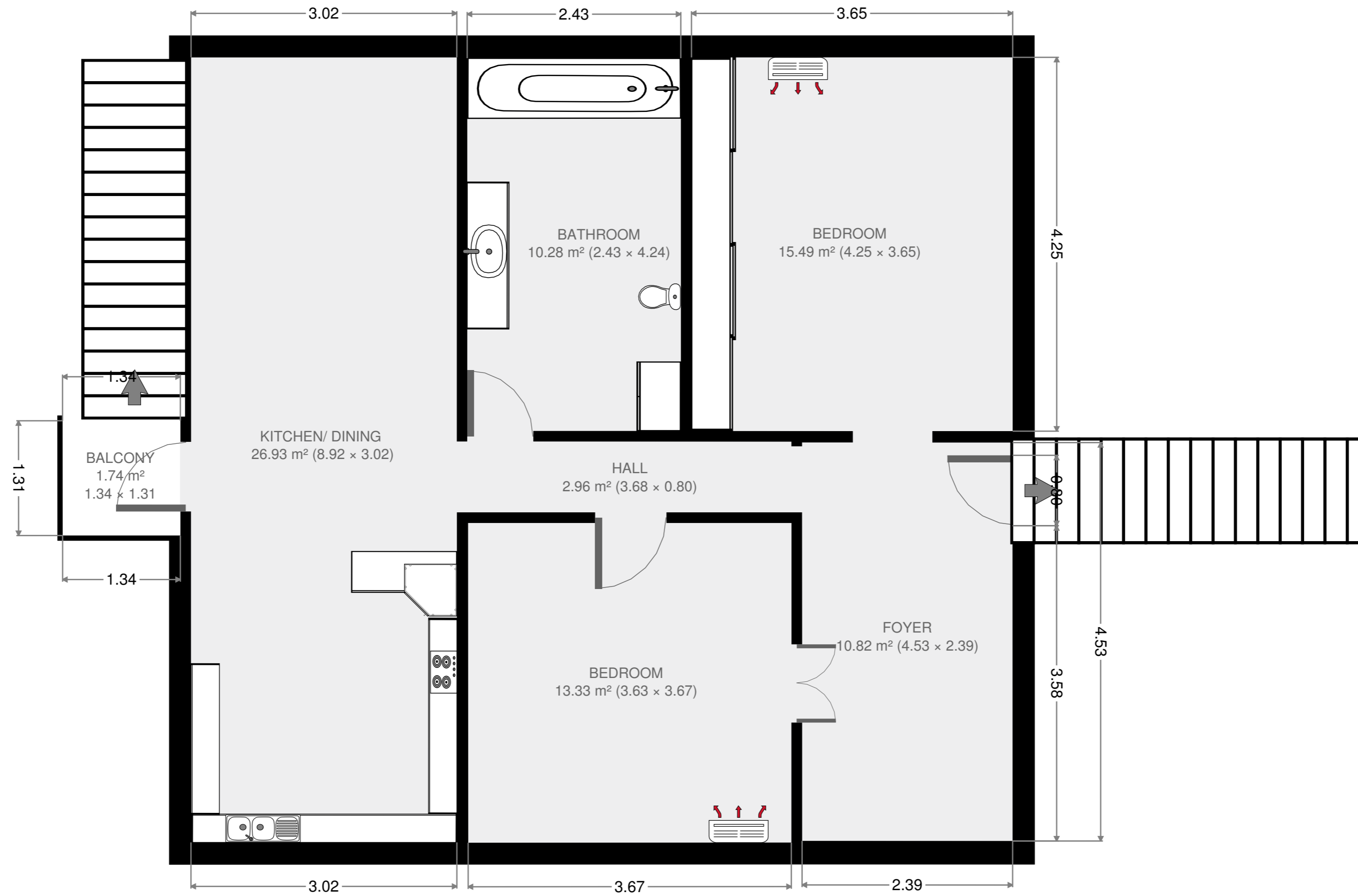
Width: 2.50 m
 Length: 2.70 m
 Area: 6.76 m²
 Perimeter: 10.41 m



Outdoor Area

Width: 5.66 m
Length: 6.34 m
Area: 35.87 m²
Perimeter: 24.00 m
Ceiling Height: 2.17 m





Ray White Rockhampton
Rockhampton.pm2@raywhite.com
(07)4923 0000
2016-11-08

112 m²

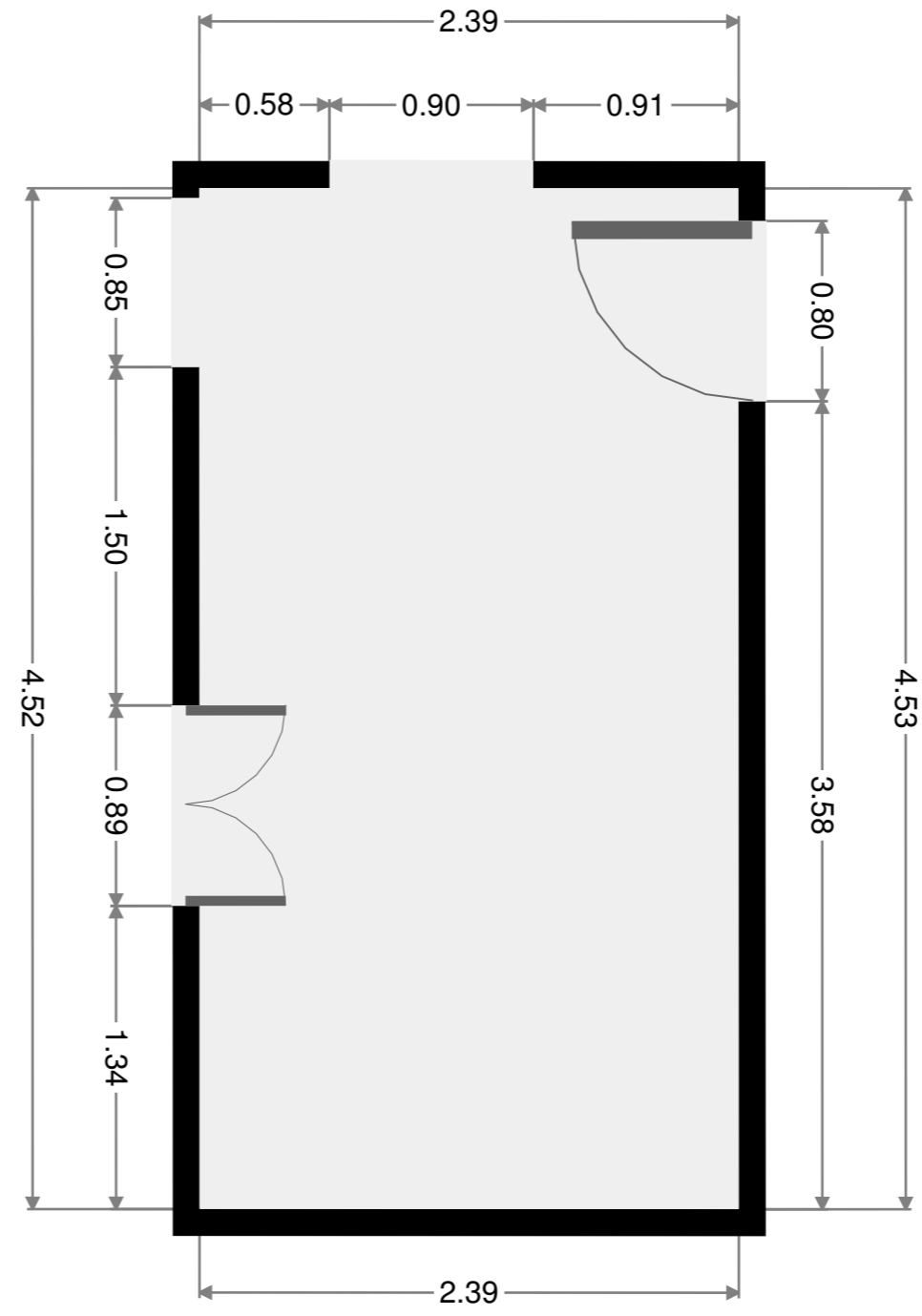
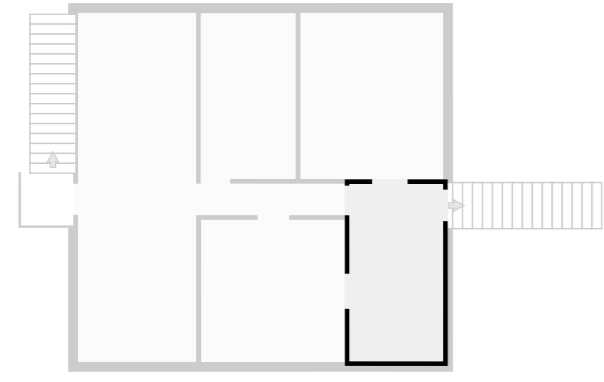
2 Floors

2 Bedrooms

1 Bathroom

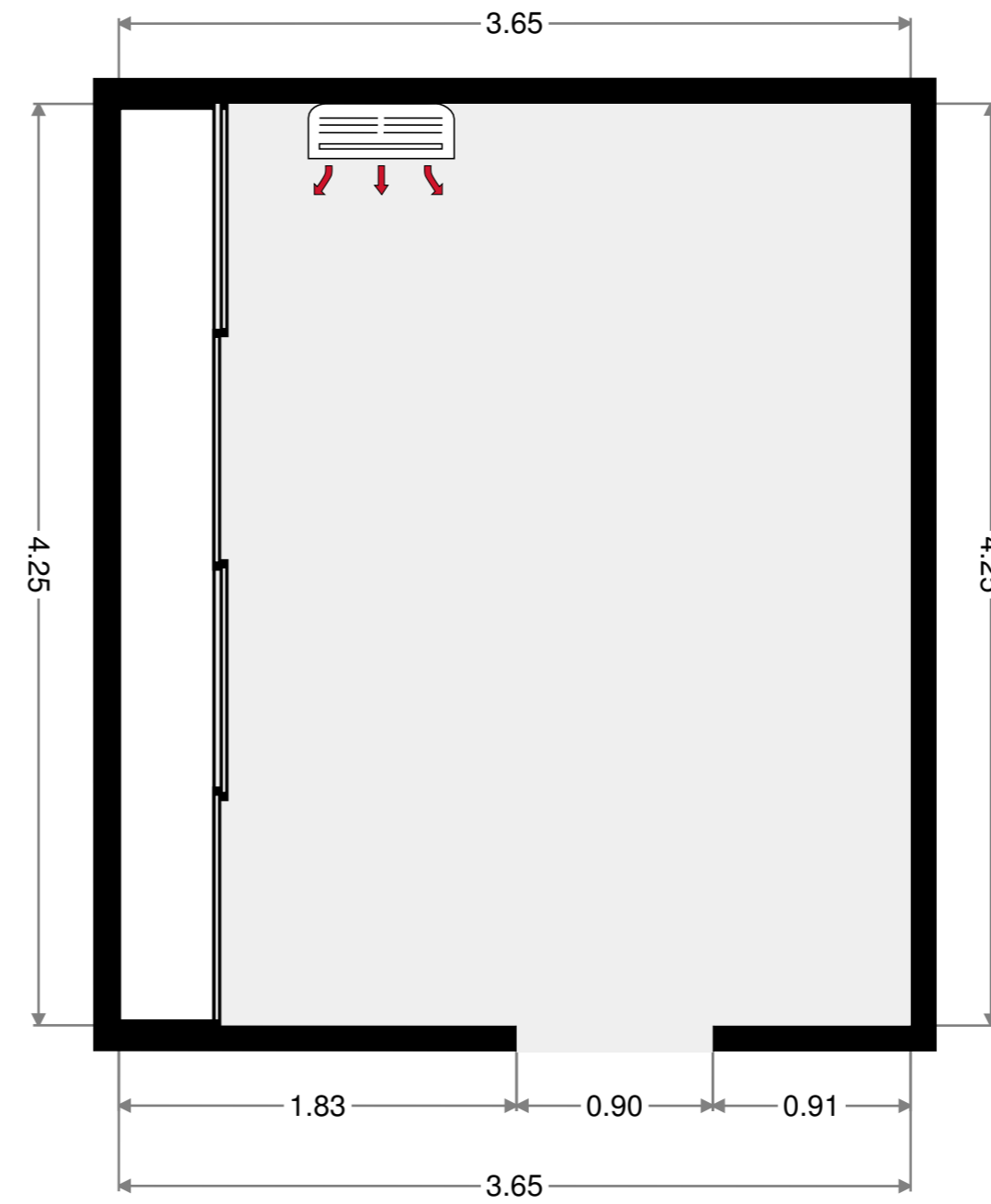
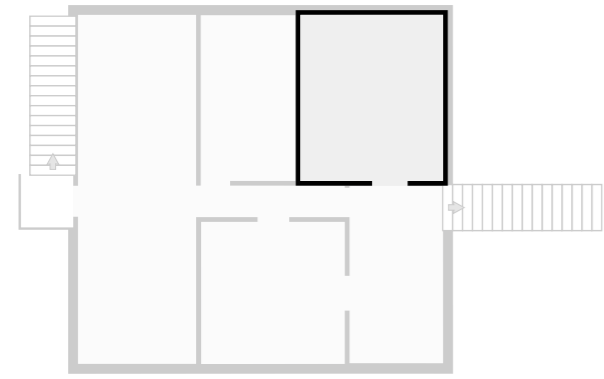
Foyer

Width: 2.39 m
 Length: 4.53 m
 Area: 10.82 m²
 Perimeter: 13.84 m



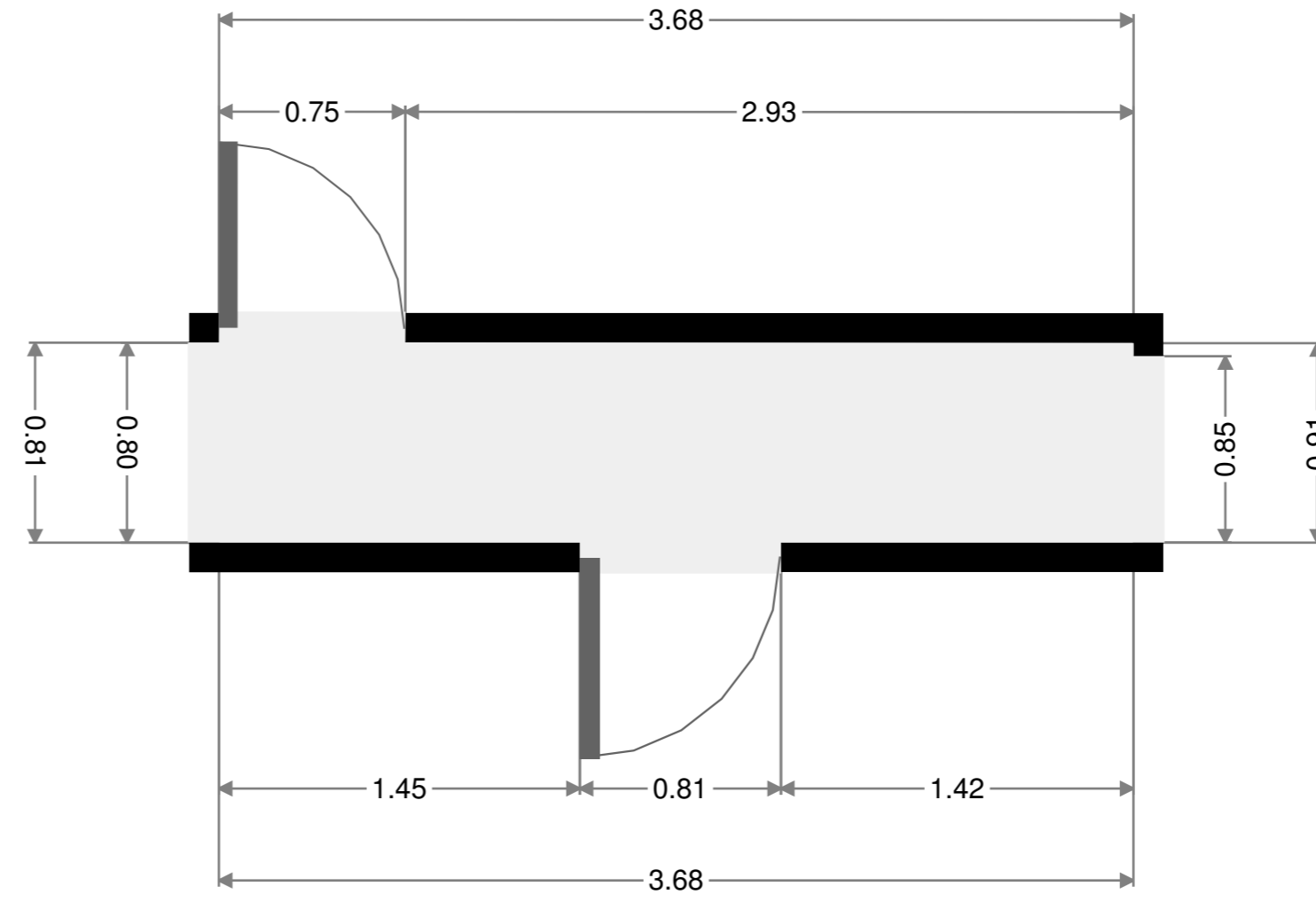
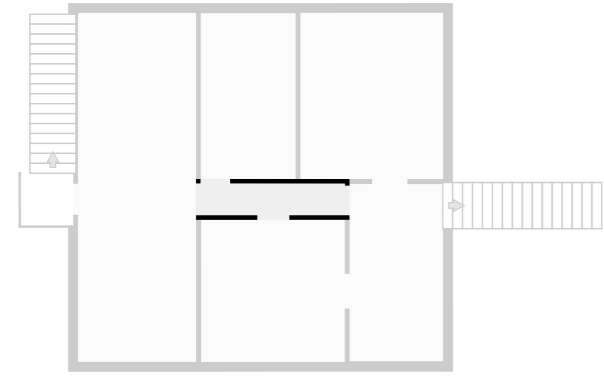
Bedroom

Width: 3.65 m
 Length: 4.25 m
 Area: 15.49 m²
 Perimeter: 15.79 m



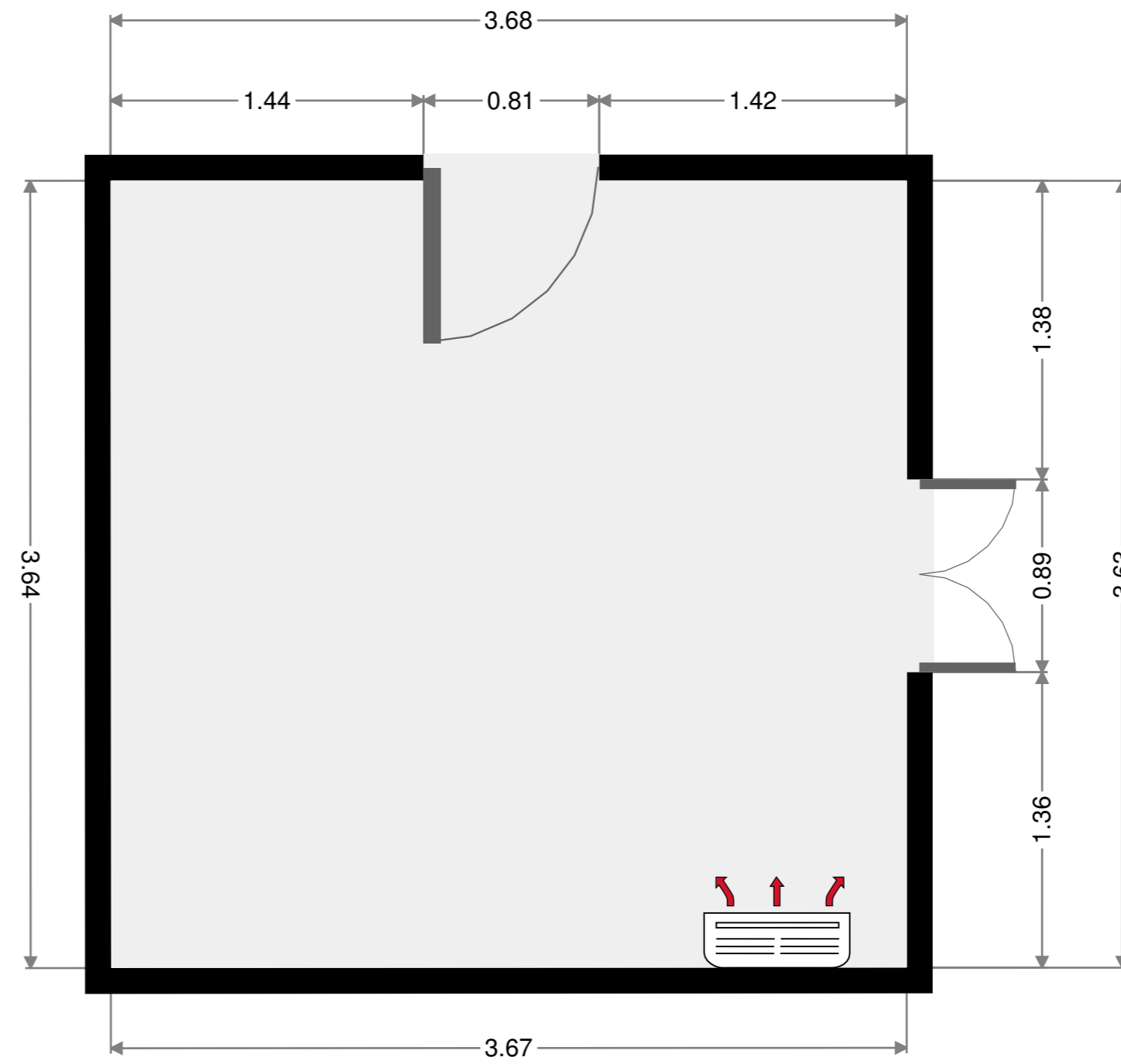
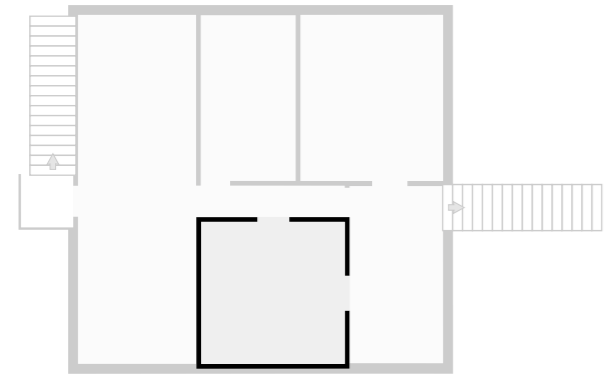
Hall

Width: 0.80 m
 Length: 3.68 m
 Area: 2.96 m²
 Perimeter: 8.97 m



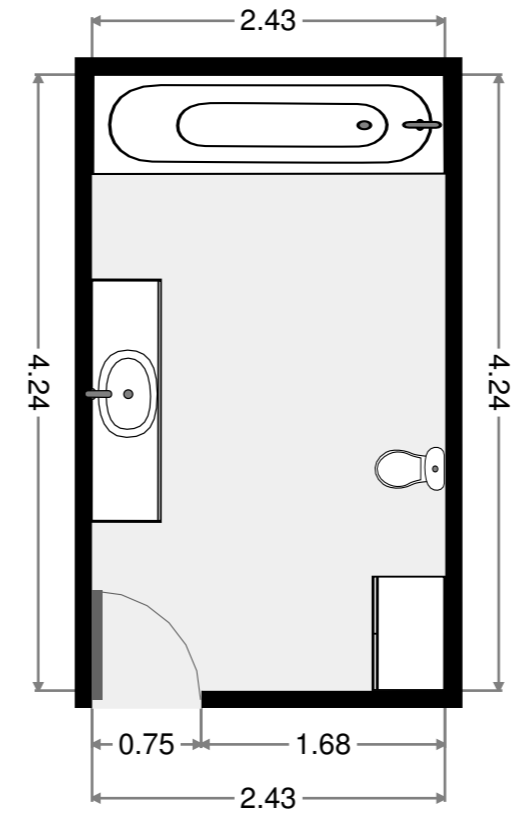
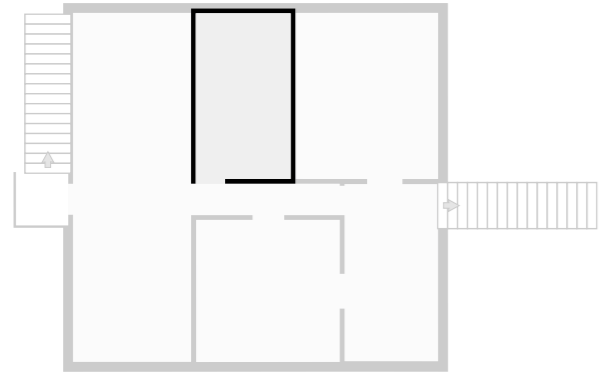
Bedroom

Width: 3.63 m
 Length: 3.67 m
 Area: 13.33 m²
 Perimeter: 14.61 m



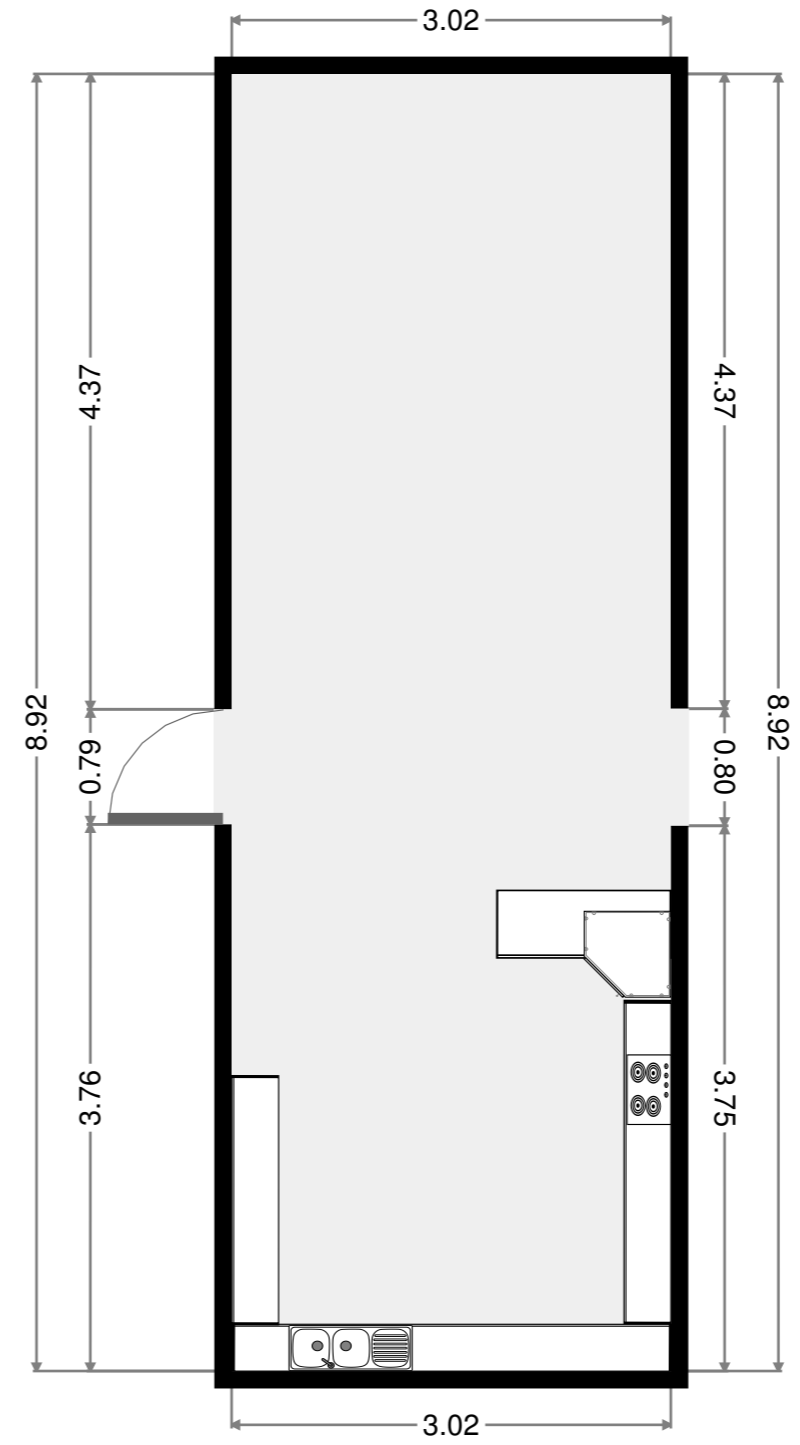
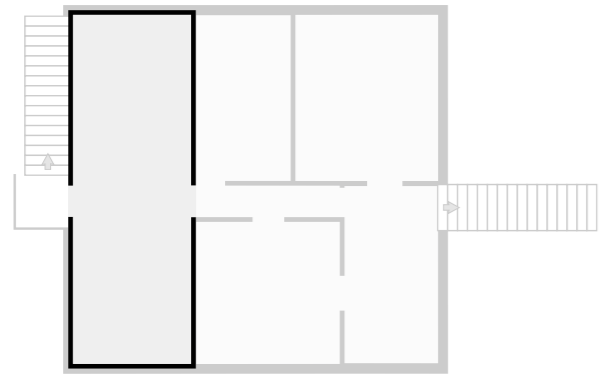
Bathroom

Width: 2.43 m
 Length: 4.24 m
 Area: 10.28 m²
 Perimeter: 13.32 m



Kitchen/ Dining

Width: 3.02 m
 Length: 8.92 m
 Area: 26.93 m²
 Perimeter: 23.88 m



Balcony

Width: 1.31 m
Length: 1.34 m
Area: 1.74 m²
Perimeter: 5.28 m

